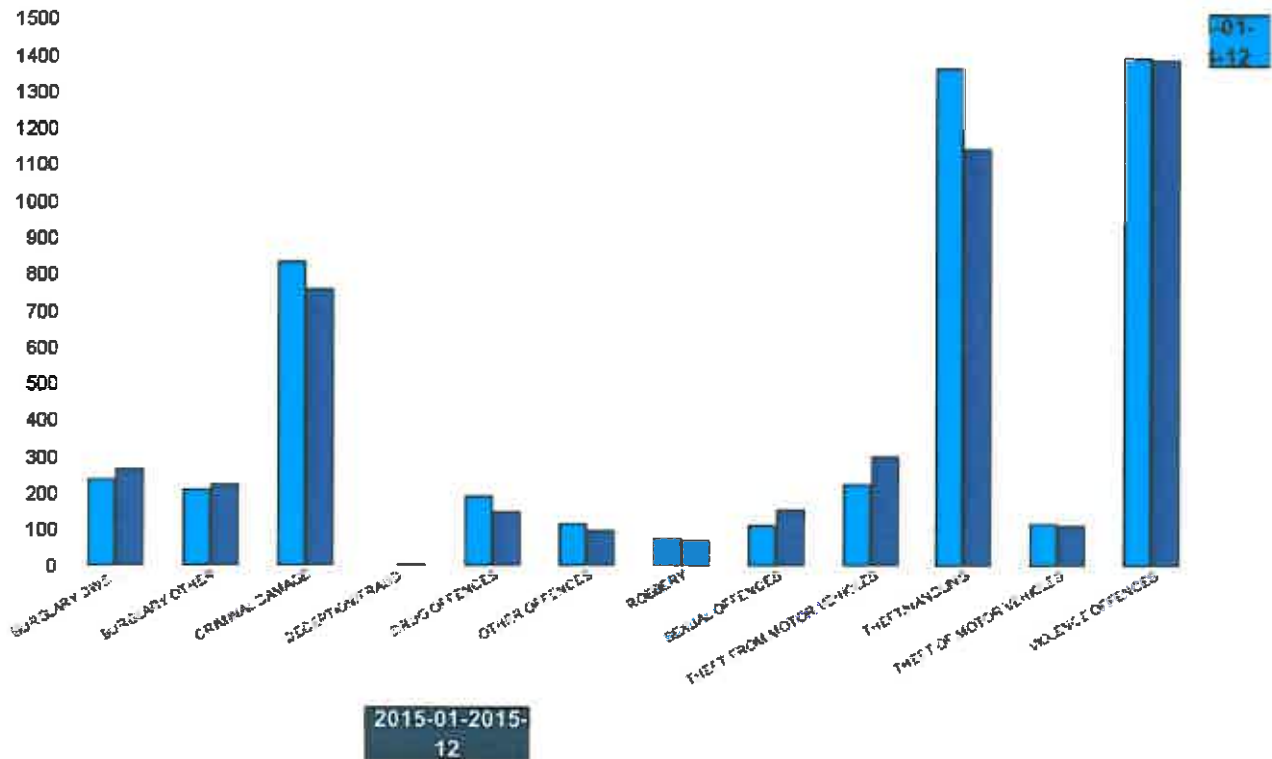


Kettering Town Forum Report 2014-01 to 2015-12

Kettering Town SCT - Crime

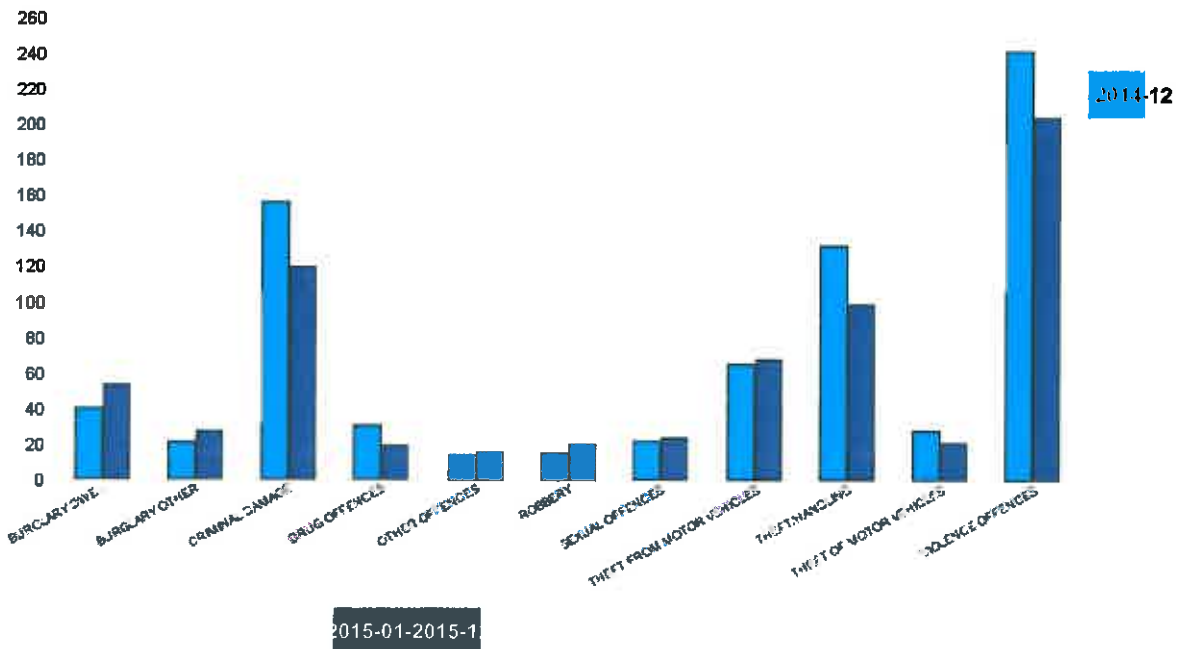
HO Group	No of Crimes Latest 12 Months	No of Crimes Previous 12 Months	+/- Crime	% Change	No of Resolved Outcome Crimes	Detection Rate (Past 12 Months)
BURGLARY DWELLING	264	238	26	11%	16	6%
BURGLARY OTHER	221	206	15	7%	14	6%
CRIMINAL DAMAGE	756	832	-76	-9%	127	17%
DECEPTION/FRAUD	1	0	1	#DIV/0	1	100%
DRUG OFFENCES	148	189	-41	-22%	133	90%
OTHER OFFENCES	94	114	-20	-18%	45	48%
ROBBERY	67	74	-7	-9%	6	9%
SEXUAL OFFENCES	151	111	40	36%	25	17%
THEFT FROM MOTOR VEHICLES	298	224	74	33%	2	1%
THEFT/HANDLING	1145	1362	-217	-16%	330	29%
THEFT OF MOTOR VEHICLES	111	113	-2	-2%	14	13%
VIOLENCE OFFENCES	1388	1394	-6	-0%	447	32%
Sum:	4644	4857	-213	-4%	1160	25%



Kettering Town Forum Report 2014-01 to 2015-12

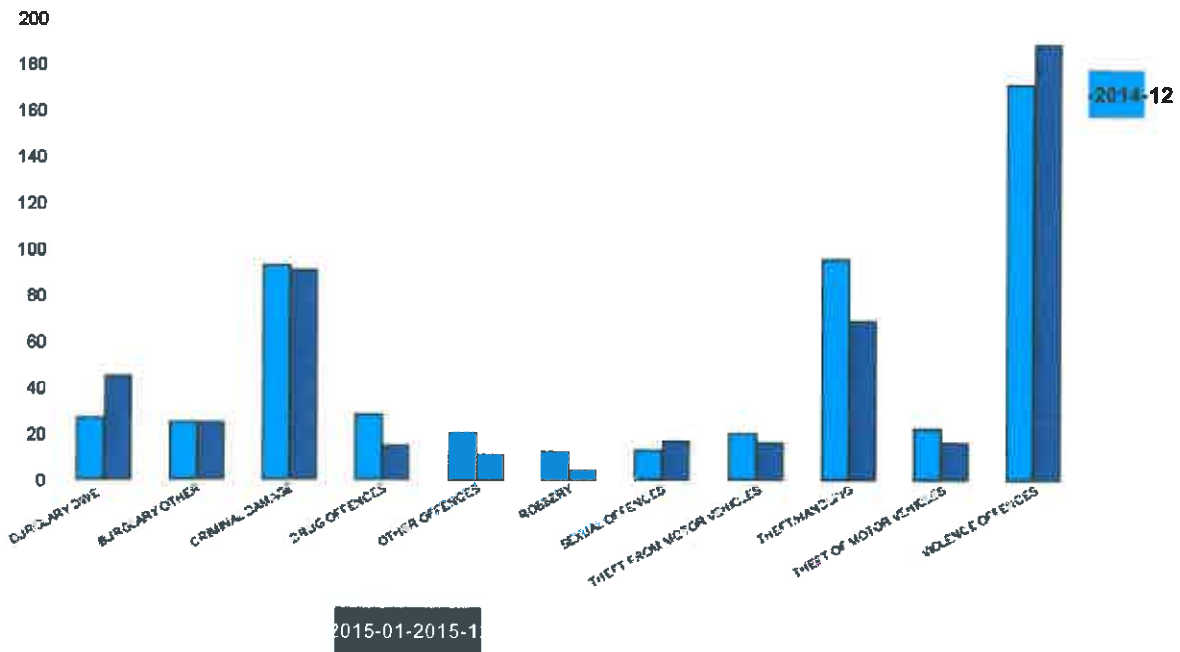
All Saints

HO Group	No of Crimes Latest 12 Months	No of Crimes Previous 12 Months	+/- Crime	% Change	No of Resolved Outcome Crimes	Detection Rate (Past 12 Months)
BURGLARY DWELLING	53	40	13	33%	1	2%
BURGLARY OTHER	27	21	6	29%	2	7%
CRIMINAL DAMAGE	120	157	-37	-24%	24	20%
DRUG OFFENCES	19	31	-12	-39%	20	105%
OTHER OFFENCES	16	14	2	14%	8	50%
ROBBERY	20	15	5	33%	2	10%
SEXUAL OFFENCES	24	22	2	9%	6	25%
THEFT FROM MOTOR VEHICLES	68	65	3	5%	0	0%
THEFT/HANDLING	99	132	-33	-25%	19	19%
THEFT OF MOTOR VEHICLES	21	28	-7	-25%	1	5%
VIOLENCE OFFENCES	205	243	-38	-16%	48	23%
Sum:	672	768	-96	-13%	131	19%



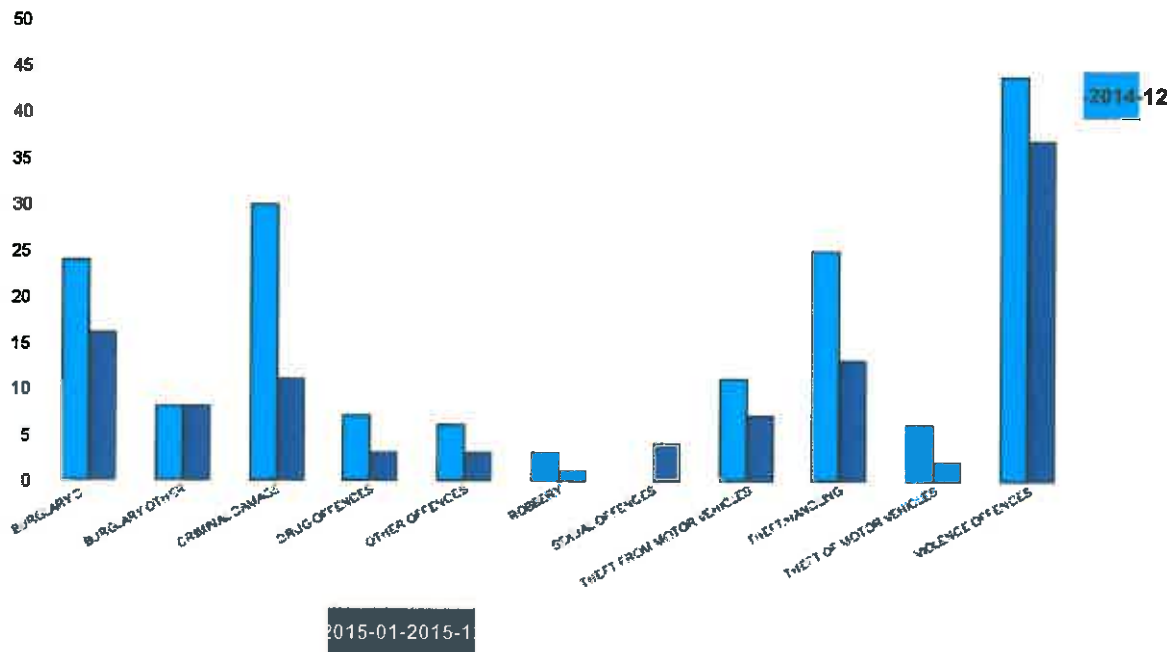
Avondale Grange

HO Group	No of Crimes Latest 12 Months	No of Crimes Previous 12 Months	+/- Crime	% Change	No of Resolved Outcome Crimes	Detection Rate (Past 12 Months)
BURGLARY DWELLING	45	27	18	67%	4	9%
BURGLARY OTHER	25	25	0	0%	1	4%
CRIMINAL DAMAGE	91	93	-2	-2%	17	19%
DRUG OFFENCES	15	28	-13	-46%	13	87%
OTHER OFFENCES	11	20	-9	-45%	1	9%
ROBBERY	4	12	-8	-67%	2	50%
SEXUAL OFFENCES	17	13	4	31%	4	24%
THEFT FROM MOTOR VEHICLES	16	20	-4	-20%	0	0%
THEFT/HANDLING	69	96	-27	-28%	16	23%
THEFT OF MOTOR VEHICLES	16	22	-6	-27%	0	0%
VIOLENCE OFFENCES	189	172	17	10%	54	29%
Sum:	498	528	-30	-6%	112	22%



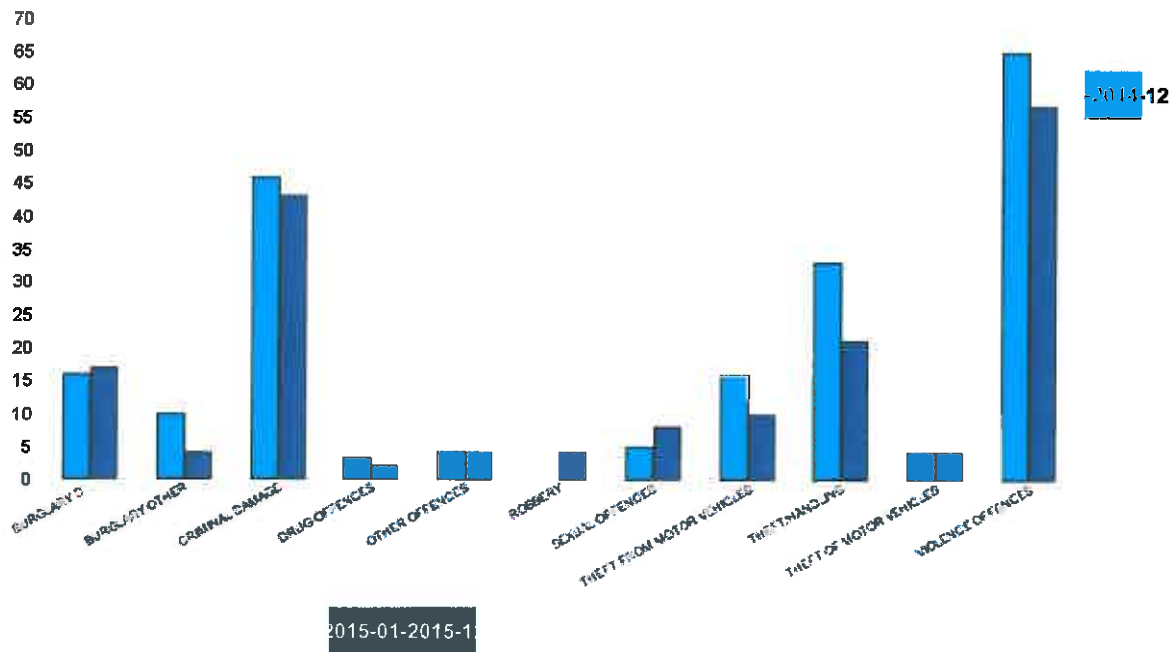
Brambleside

HO Group	No of Crimes Latest 12 Months	No of Crimes Previous 12 Months	+/- Crime	% Change	No of Resolved Outcome Crimes	Detection Rate (Past 12 Months)
BURGLARY DWELLING	16	24	-8	-33%	0	0%
BURGLARY OTHER	8	8	0	0%	0	0%
CRIMINAL DAMAGE	11	30	-19	-63%	3	27%
DRUG OFFENCES	3	7	-4	-57%	5	167%
OTHER OFFENCES	3	6	-3	-50%	6	200%
ROBBERY	1	3	-2	-67%	0	0%
SEXUAL OFFENCES	4	0	4	0%	1	25%
THEFT FROM MOTOR VEHICLES	7	11	-4	-36%	0	0%
THEFT/HANDLING	13	25	-12	-48%	0	0%
THEFT OF MOTOR VEHICLES	2	6	-4	-67%	0	0%
VIOLENCE OFFENCES	37	44	-7	-16%	7	19%
Sum.	105	164	-59	-36%	22	21%



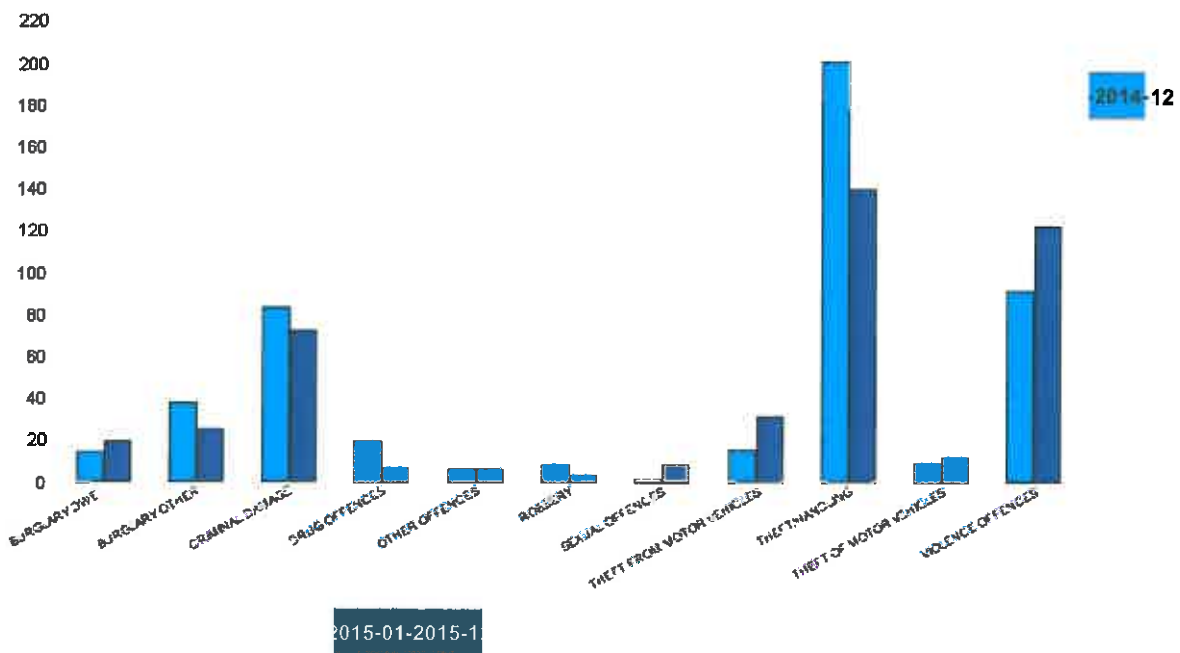
Ise Lodge

HO Group	No of Crimes Latest 12 Months	No of Crimes Previous 12 Months	+/- Crime	% Change	No of Resolved Outcome Crimes	Detection Rate (Past 12 Months)
BURGLARY DWELLING	17	16	1	6%	0	0%
BURGLARY OTHER	4	10	-6	-60%	0	0%
CRIMINAL DAMAGE	43	46	-3	-7%	3	7%
DRUG OFFENCES	2	3	-1	-33%	3	150%
OTHER OFFENCES	4	4	0	0%	2	50%
ROBBERY	4	0	4	0%	0	0%
SEXUAL OFFENCES	8	5	3	60%	2	25%
THEFT FROM MOTOR VEHICLES	10	16	-6	-38%	0	0%
THEFT/HANDLING	21	33	-12	-36%	6	29%
THEFT OF MOTOR VEHICLES	4	4	0	0%	0	0%
VIOLENCE OFFENCES	57	65	-8	-12%	13	23%
Sum:	174	202	-28	-14%	29	17%



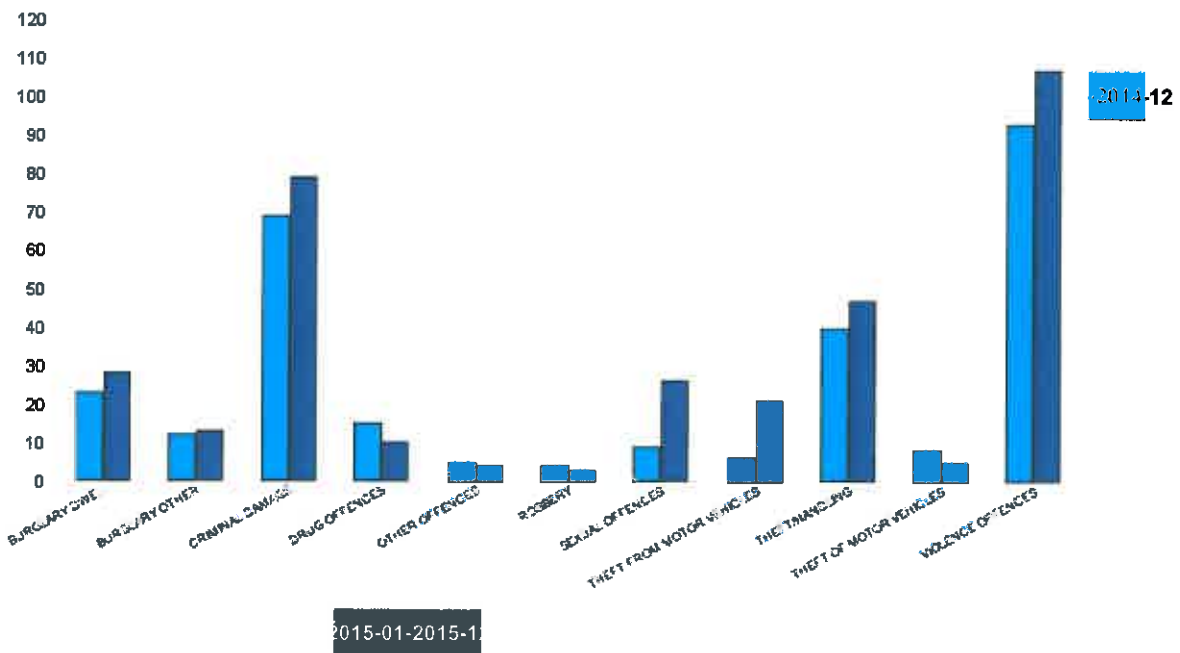
Northfield

HO Group	No of Crimes Latest 12 Months	No of Crimes Previous 12 Months	+/- Crime	% Change	No of Resolved Outcome Crimes	Detection Rate (Past 12 Months)
BURGLARY DWELLING	19	14	5	36%	1	5%
BURGLARY OTHER	25	38	-13	-34%	2	8%
CRIMINAL DAMAGE	72	83	-11	-13%	10	14%
DRUG OFFENCES	7	19	-12	-63%	8	114%
OTHER OFFENCES	6	6	0	0%	3	50%
ROBBERY	3	8	-5	-63%	0	0%
SEXUAL OFFENCES	8	2	6	300%	1	13%
THEFT FROM MOTOR VEHICLES	31	15	16	107%	0	0%
THEFT/HANDLING	140	201	-61	-30%	41	29%
THEFT OF MOTOR VEHICLES	12	9	3	33%	1	8%
VIOLENCE OFFENCES	122	91	31	34%	33	27%
Sum:	445	486	-41	-8%	100	22%



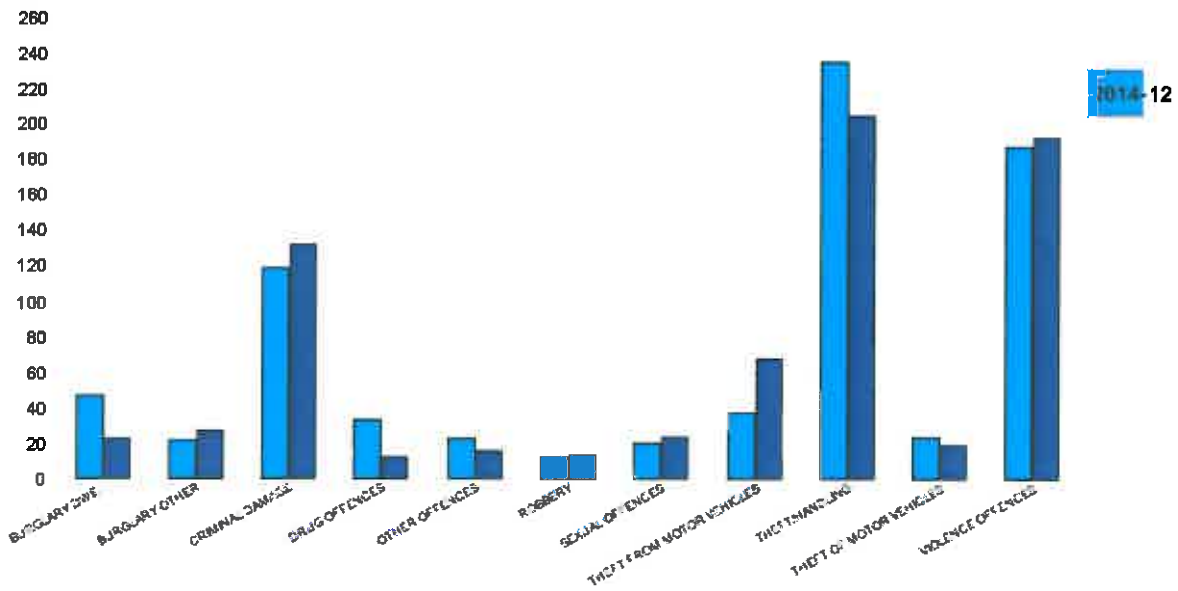
Pipers Hill

HO Group	No of Crimes Latest 12 Months	No of Crimes Previous 12 Months	+/- Crime	% Change	No of Resolved Outcome Crimes	Detection Rate (Past 12 Months)
BURGLARY DWELLING	28	23	5	22%	2	7%
BURGLARY OTHER	13	12	1	8%	1	8%
CRIMINAL DAMAGE	79	69	10	14%	7	9%
DRUG OFFENCES	10	15	-5	-33%	6	60%
OTHER OFFENCES	4	5	-1	-20%	2	50%
ROBBERY	3	4	-1	-25%	0	0%
SEXUAL OFFENCES	26	9	17	189%	1	4%
THEFT FROM MOTOR VEHICLES	21	6	15	250%	0	0%
THEFT/HANDLING	47	40	7	18%	7	15%
THEFT OF MOTOR VEHICLES	5	8	-3	-38%	0	0%
VIOLENCE OFFENCES	107	93	14	15%	30	28%
Sum:	343	284	59	21%	56	16%



St Michaels and Wicksteed

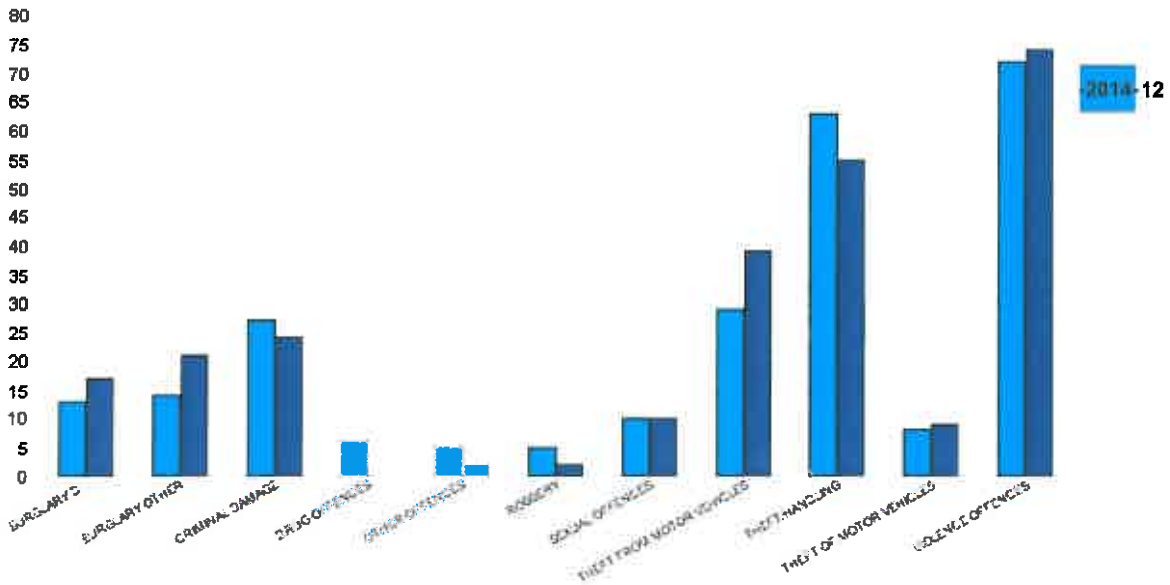
HO Group	No of Crimes Latest 12 Months	No of Crimes Previous 12 Months	+/- Crime	% Change	No of Resolved Outcome Crimes	Detection Rate (Past 12 Months)
BURGLARY DWELLING	23	47	-24	-51%	3	13%
BURGLARY OTHER	27	22	5	23%	3	11%
CRIMINAL DAMAGE	132	119	13	11%	22	17%
DRUG OFFENCES	12	33	-21	-64%	6	50%
OTHER OFFENCES	16	23	-7	-30%	5	31%
ROBBERY	13	12	1	8%	1	8%
SEXUAL OFFENCES	24	20	4	20%	3	13%
THEFT FROM MOTOR VEHICLES	68	38	30	79%	1	1%
THEFT/HANDLING	205	236	-31	-13%	57	28%
THEFT OF MOTOR VEHICLES	19	24	-5	-21%	3	16%
VIOLENCE OFFENCES	193	188	5	3%	63	33%
Sum:	732	762	-30	-4%	167	23%



2015-01-2015-1

St Peters

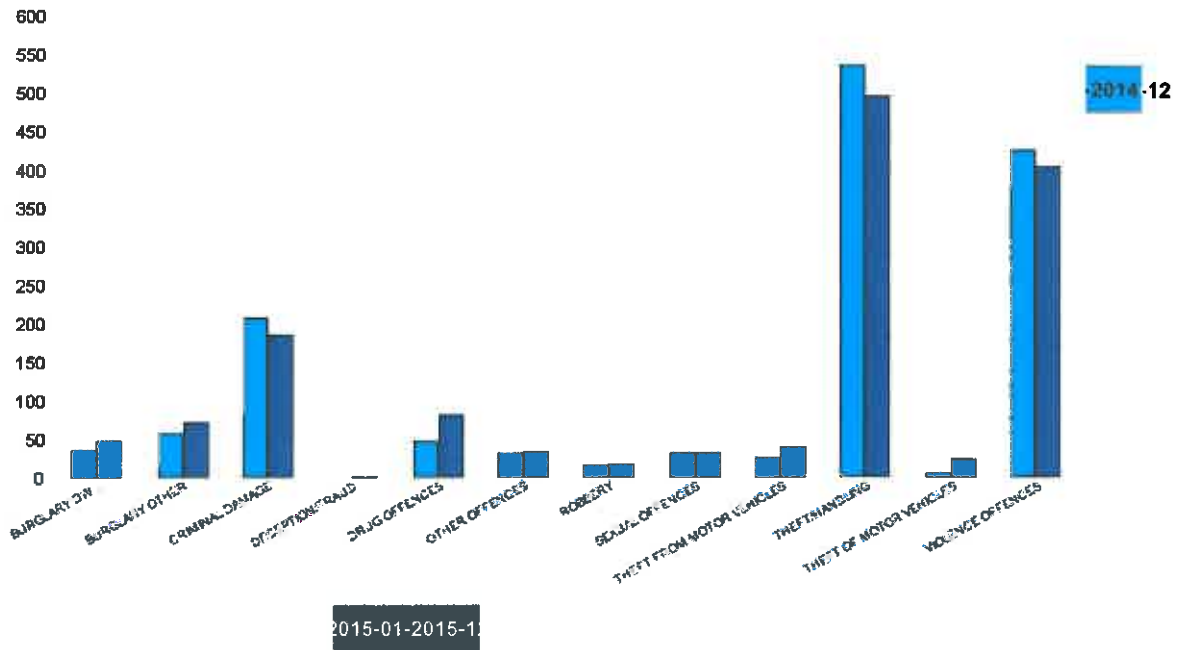
HO Group	No of Crimes Latest 12 Months	No of Crimes Previous 12 Months	+/- Crime	% Change	No of Resolved Outcome Crimes	Detection Rate (Past 12 Months)
BURGLARY DWELLING	17	13	4	31%	1	6%
BURGLARY OTHER	21	14	7	50%	0	0%
CRIMINAL DAMAGE	24	27	-3	-11%	7	29%
DRUG OFFENCES	0	6	-6	-100%	1	0%
OTHER OFFENCES	2	5	-3	-60%	1	50%
ROBBERY	2	5	-3	-60%	0	0%
SEXUAL OFFENCES	10	10	0	0%	4	40%
THEFT FROM MOTOR VEHICLES	39	29	10	34%	0	0%
THEFT/HANDLING	55	63	-8	-13%	8	15%
THEFT OF MOTOR VEHICLES	9	8	1	13%	1	11%
VIOLENCE OFFENCES	74	72	2	3%	25	34%
Sum.	253	252	1	0%	48	19%



2015-01-2015-1

William Knibb

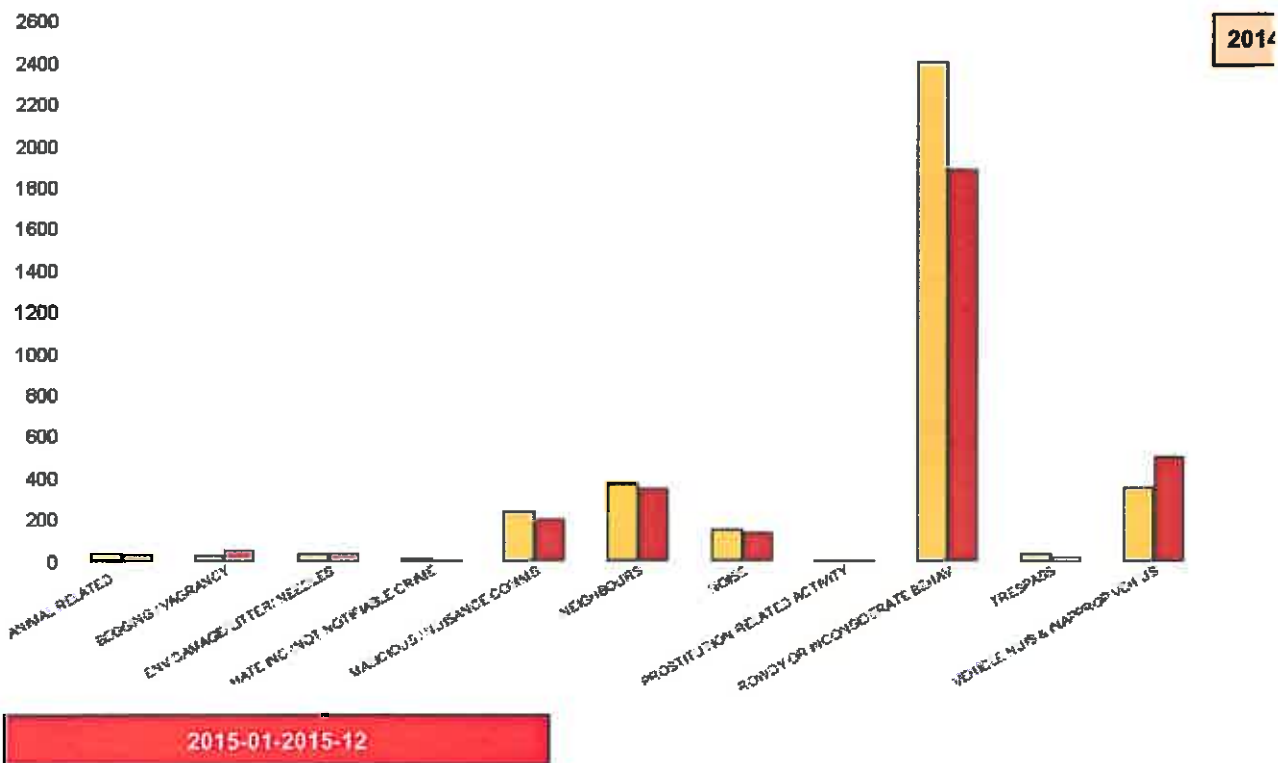
HO Group	No of Crimes Latest 12 Months	No of Crimes Previous 12 Months	+/- Crime	% Change	No of Resolved Outcome Crimes	Detection Rate (Past 12 Months)
BURGLARY DWELLING	46	34	12	35%	4	9%
BURGLARY OTHER	71	56	15	27%	5	7%
CRIMINAL DAMAGE	184	208	-24	-12%	34	18%
DECEPTION/FRAUD	1	0	1	#DIV/0	1	100%
DRUG OFFENCES	80	47	33	70%	71	89%
OTHER OFFENCES	32	31	1	3%	17	53%
ROBBERY	17	15	2	13%	1	6%
SEXUAL OFFENCES	30	30	0	0%	3	10%
THEFT FROM MOTOR VEHICLES	38	24	14	58%	1	3%
THEFT/HANDLING	496	536	-40	-7%	176	35%
THEFT OF MOTOR VEHICLES	23	4	19	475%	8	35%
VIOLENCE OFFENCES	404	426	-22	-5%	174	43%
Sum:	1422	1411	11	1%	495	35%



Kettering Town Forum Report 2014-01 to 2015-12

Kettering Town SCT - ASB

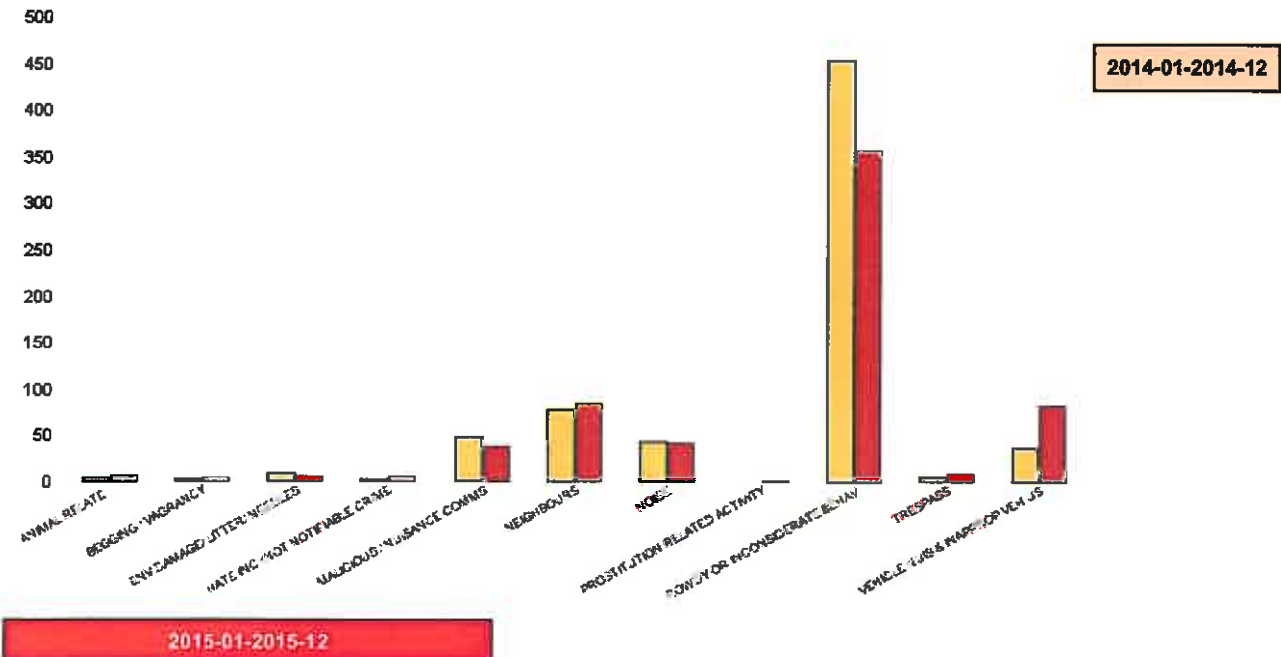
NSIR Closing Cat. 1 Desc	No of Incidents Latest 12 Months	No of Incidents Previous 12 Months	+/- Incidents	% Change Incidents
ANIMAL RELATED INC ANTI-SOCIAL	29	33	-4	-12%
BEGGING / VAGRANCY	48	23	25	109%
ENV.DAMAGE/ LITTER/ NEEDLES	36	34	2	6%
HATE INC (NOT NOTIFIABLE CRIME	6	9	-3	-33%
MALICIOUS / NUISANCE COMMS	196	241	-45	-19%
NEIGHBOURS	347	367	-20	-5%
NOISE	136	150	-14	-9%
PROSTITUTION RELATED ACTIVITY	4	1	3	300%
ROWDY OR INCONSIDERATE BEHAV	1885	2400	-515	-21%
TRESPASS	20	34	-14	-41%
VEHICLE NUIS & INAPPROP VEH US	506	353	153	43%
Sum:	3213	3645	-432	-12%



Kettering Town Forum Report 2014-01 to 2015-12

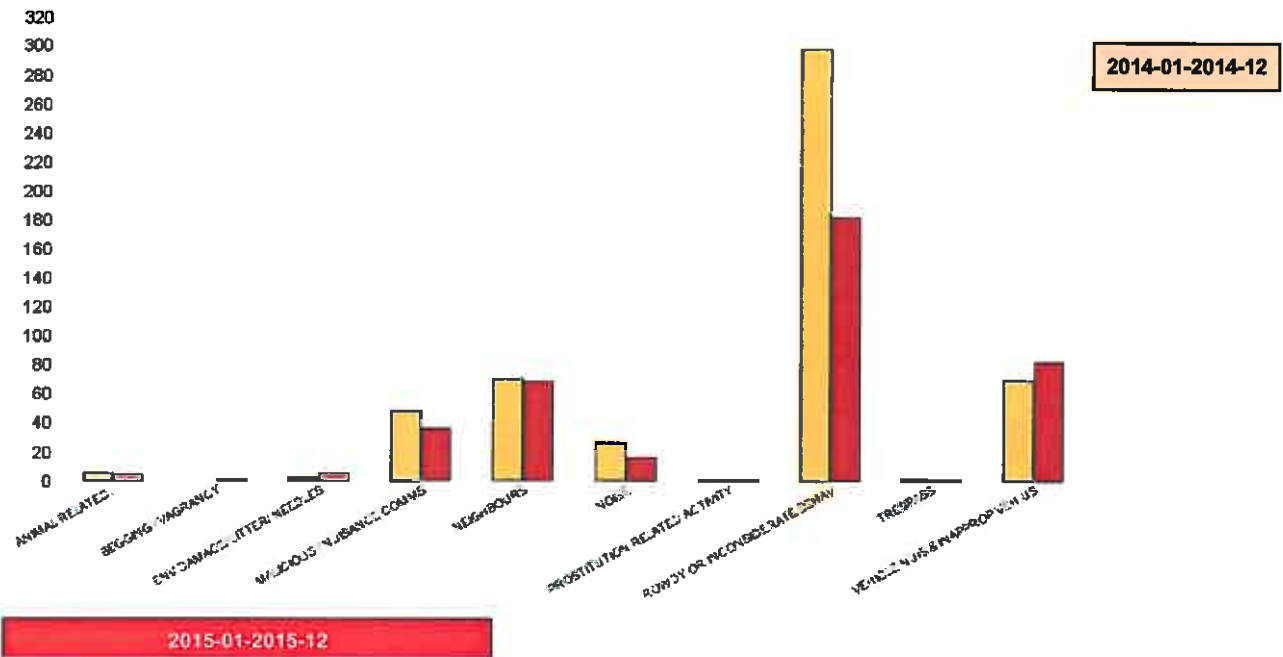
All Saints

NSIR Closing Cat. 1 Desc	No of incidents Latest 12 Months	No of incidents Previous 12 Months	+/- incidents	% Change incidents
ANIMAL RELATED INC ANTI-SOCIAL	5	4	1	25%
BEGGING / VAGRANCY	3	2	1	50%
ENV.DAMAGE/ LITTER/ NEEDLES	5	9	-4	-44%
HATE INC (NOT NOTIFIABLE CRIME)	5	2	3	150%
MALICIOUS / NUISANCE COMMS	38	48	-10	-21%
NEIGHBOURS	84	78	6	8%
NOISE	41	43	-2	-5%
PROSTITUTION RELATED ACTIVITY	1	0	1	0%
ROWDY OR INCONSIDERATE BEHAV	358	454	-96	-21%
TRESPASS	8	6	2	33%
VEHICLE NUIS & INAPPROP VEH US	83	36	47	131%
Sum:	631	682	-51	-7%



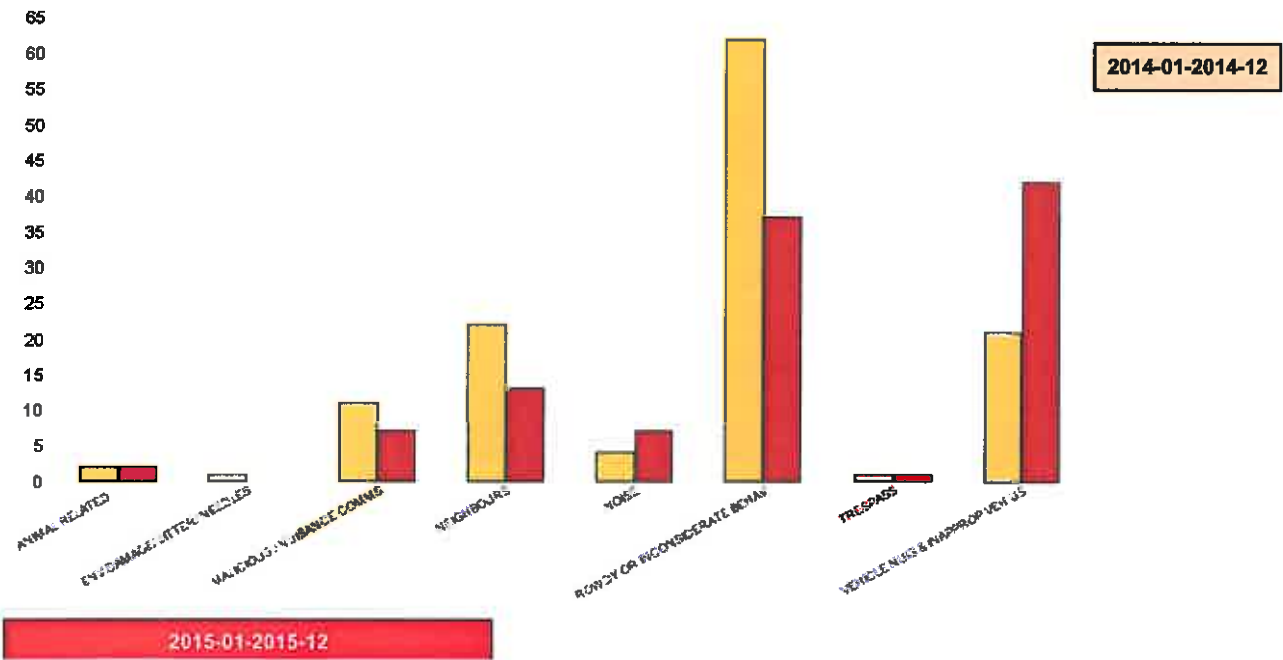
Avondale C

NSIR Closing Cat. 1 Desc	No of Incidents Latest 12 Months	No of Incidents Previous 12 Months	+/- Incidents	% Change incidents
ANIMAL RELATED INC ANTI-SOCIAL	4	6	-2	-33%
BEGGING / VAGRANCY	1	0	1	0%
ENV.DAMAGE/ LITTER/ NEEDLES	6	2	4	200%
MALICIOUS / NUISANCE COMMS	36	48	-12	-25%
NEIGHBOURS	68	70	-2	-3%
NOISE	16	26	-10	-38%
PROSTITUTION RELATED ACTIVITY	1	1	0	0%
ROWDY OR INCONSIDERATE BEHAV	182	298	-116	-39%
TRESPASS	1	1	0	0%
VEHICLE NUIS & INAPPROP VEH US	82	69	13	19%
Sum:	397	521	-124	-24%



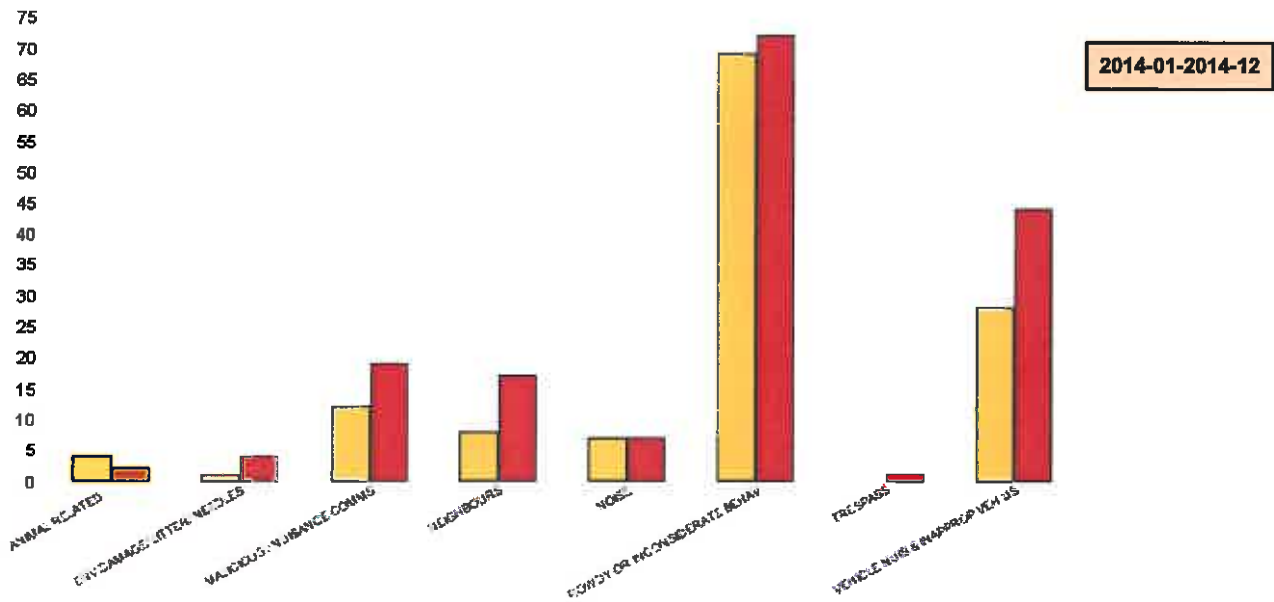
Bramblesic

NSIR Closing Cat. 1 Desc	No of Incidents Latest 12 Months	No of Incidents Previous 12 Months	+/- Incidents	% Change Incidents
ANIMAL RELATED INC ANTI-SOCIAL	2	2	0	0%
ENV.DAMAGE/ LITTER/ NEEDLES	0	1	-1	-100%
MALICIOUS / NUISANCE COMMS	7	11	-4	-36%
NEIGHBOURS	13	22	-9	-41%
NOISE	7	4	3	75%
ROWDY OR INCONSIDERATE BEHAV	37	62	-25	-40%
TRESPASS	1	1	0	0%
VEHICLE NUIS & INAPPROP VEH US	42	21	21	100%
Sum:	109	124	-15	-12%



Ise Lodge

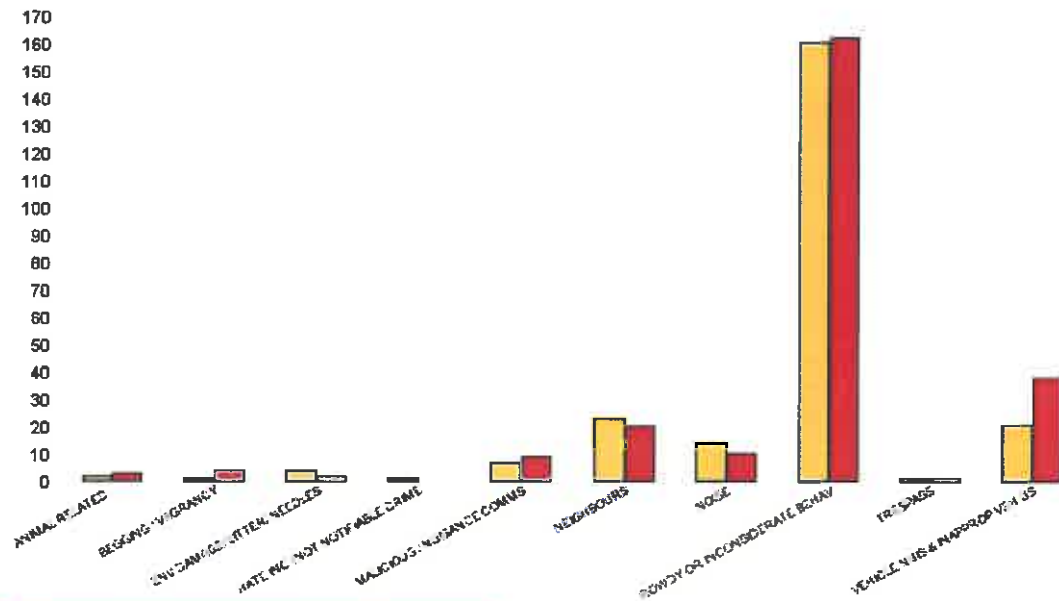
NSIR Closing Cat. 1 Desc	No of Incidents Latest 12 Months	No of Incidents Previous 12 Months	+/- Incidents	% Change Incidents
ANIMAL RELATED INC ANTI-SOCIAL	2	4	-2	-50%
ENV.DAMAGE/ LITTER/ NEEDLES	4	1	3	300%
MALICIOUS / NUISANCE COMMS	19	12	7	58%
NEIGHBOURS	17	8	9	113%
NOISE	7	7	0	0%
ROWDY OR INCONSIDERATE BEHAV	72	69	3	4%
TRESPASS	1	0	1	0%
VEHICLE NUIS & INAPPROP VEH US	44	28	16	57%
Sum:	166	129	37	29%



2015-01-2015-12

Northfield

NSIR Closing Cat. 1 Desc	No of Incidents Latest 12 Months	No of Incidents Previous 12 Months	+/- Incidents	% Change Incidents
ANIMAL RELATED INC ANTI-SOCIAL	3	2	1	50%
BEGGING / VAGRANCY	4	1	3	300%
ENV.DAMAGE/ LITTER/ NEEDLES	2	4	-2	-50%
HATE INC (NOT NOTIFIABLE CRIME	0	1	-1	-100%
MALICIOUS / NUISANCE COMMS	9	7	2	29%
NEIGHBOURS	20	23	-3	-13%
NOISE	10	14	-4	-29%
ROWDY OR INCONSIDERATE BEHAV	163	161	2	1%
TRESPASS	1	1	0	0%
VEHICLE NUIS & INAPPROP VEH US	36	21	17	81%
Sum:	250	235	15	6%

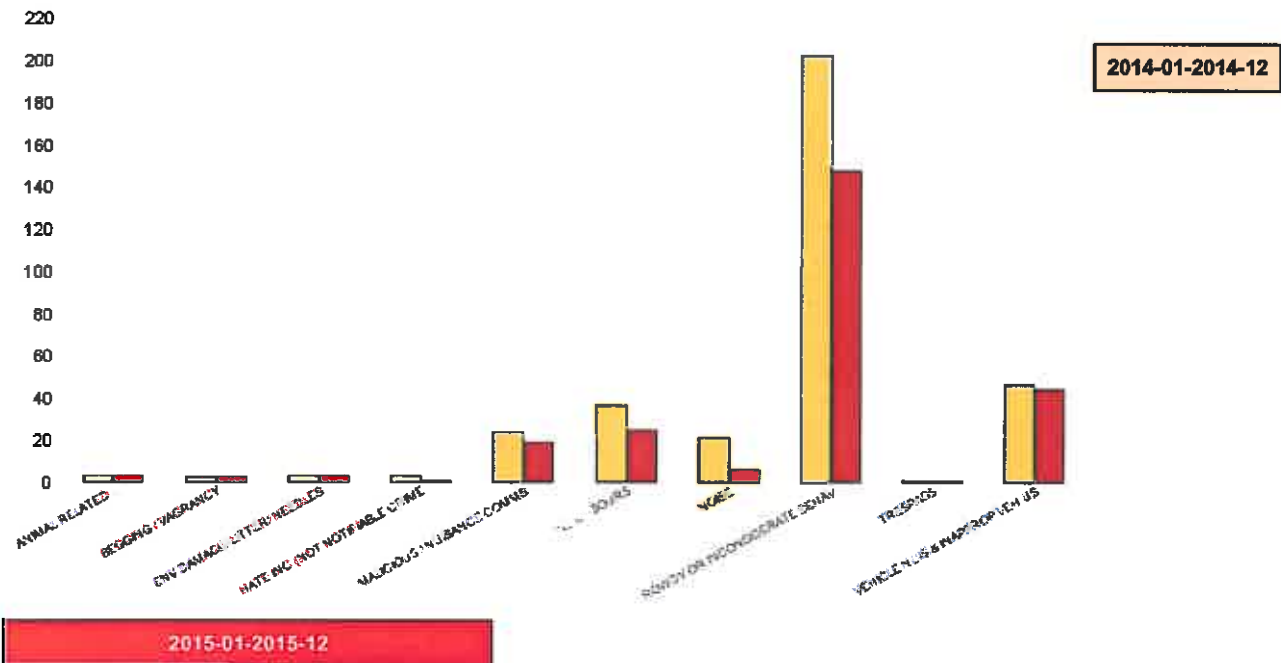


2014-01-2014-12

2015-01-2015-12

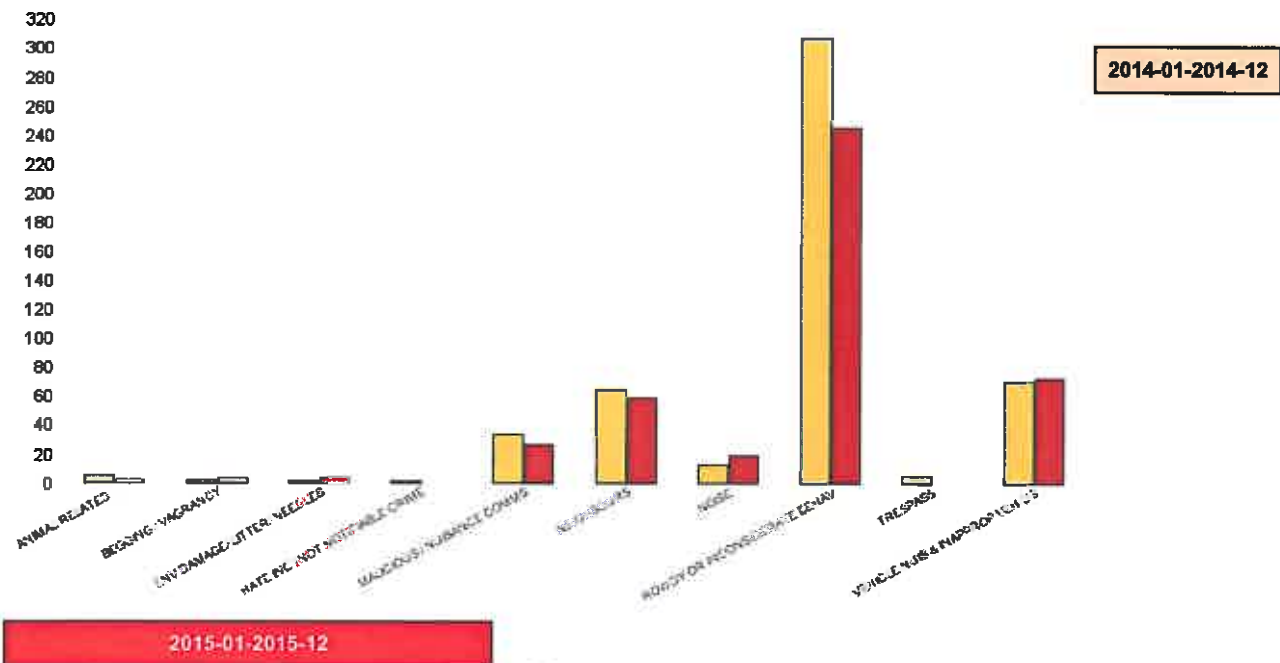
Pipers Hill

NSIR Closing Cat. 1 Desc	No of Incidents Latest 12 Months	No of Incidents Previous 12 Months	+/- Incidents	% Change Incidents
ANIMAL RELATED INC ANTI-SOCIAL	3	3	0	0%
BEGGING / VAGRANCY	2	2	0	0%
ENV.DAMAGE/ LITTER/ NEEDLES	3	3	0	0%
HATE INC (NOT NOTIFIABLE CRIME	1	3	-2	-67%
MALICIOUS / NUISANCE COMMS	19	24	-5	-21%
NEIGHBOURS	25	36	-11	-31%
NOISE	6	21	-15	-71%
ROWDY OR INCONSIDERATE BEHAV	148	203	-55	-27%
TRESPASS	1	1	0	0%
VEHICLE NUIS & INAPPROP VEH US	44	46	-2	-4%
Sum:	252	342	-90	-26%



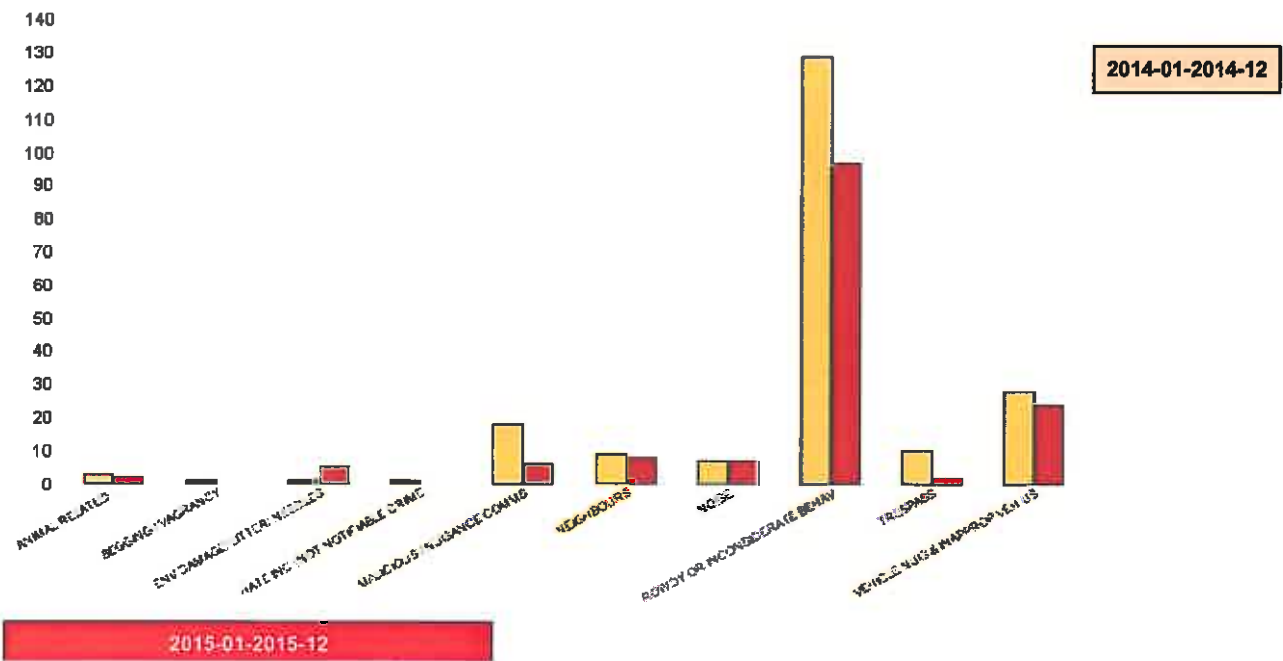
St Michaels and Wicksteed

NSIR Closing Cat. 1 Desc	No of Incidents Latest 12 Months	No of Incidents Previous 12 Months	+/- Incidents	% Change incidents
ANIMAL RELATED INC ANTI-SOCIAL	2	5	-3	-60%
BEGGING / VAGRANCY	3	2	1	50%
ENV.DAMAGE/ LITTER/ NEEDLES	3	1	2	200%
HATE INC (NOT NOTIFIABLE CRIME	0	1	-1	-100%
MALICIOUS / NUISANCE COMMS	26	34	-8	-24%
NEIGHBOURS	59	64	-5	-8%
NOISE	19	13	6	46%
ROWDY OR INCONSIDERATE BEHAV	246	307	-61	-20%
TRESPASS	0	5	-5	-100%
VEHICLE NUIS & INAPPROP VEH US	73	70	3	4%
Sum:	431	502	-71	-14%



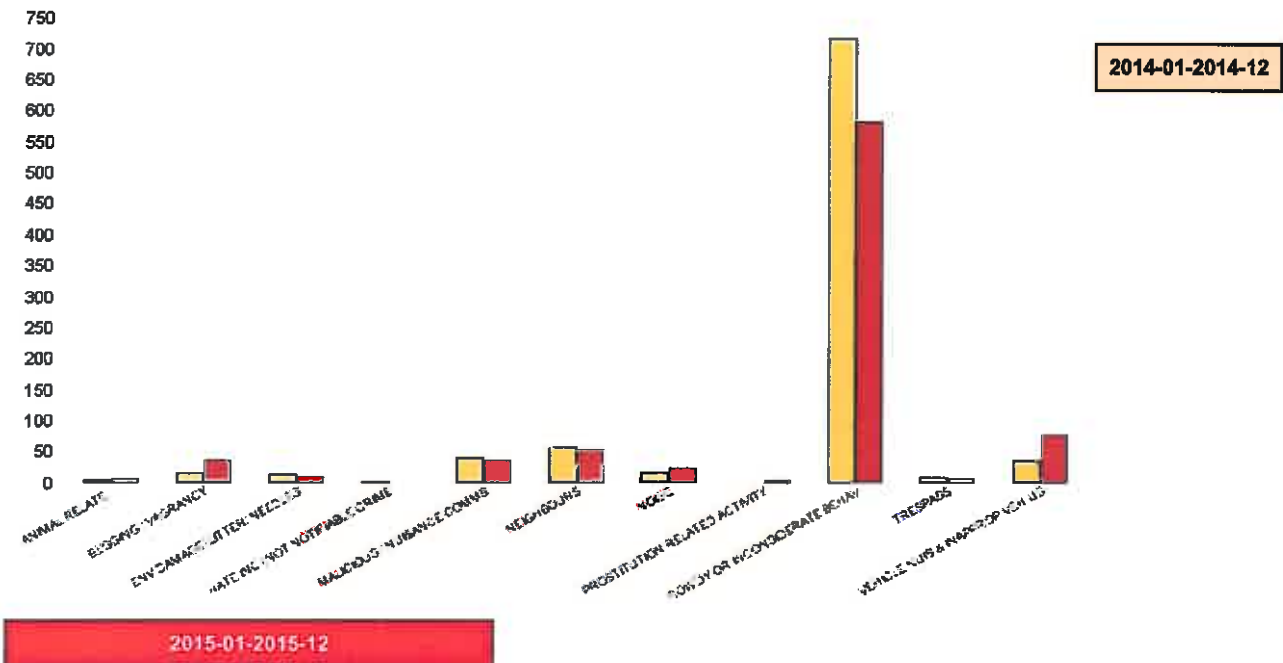
St Peters

NSIR Closing Cat. 1 Desc	No of Incidents Latest 12 Months	No of Incidents Previous 12 Months	+/- Incidents	% Change Incidents
ANIMAL RELATED INC ANTI-SOCIAL	2	3	-1	-33%
BEGGING / VAGRANCY	0	1	-1	-100%
ENV.DAMAGE/ LITTER/ NEEDLES	5	1	4	400%
HATE INC (NOT NOTIFIABLE CRIME)	0	1	-1	-100%
MALICIOUS / NUISANCE COMMS	6	18	-12	-67%
NEIGHBOURS	8	9	-1	-11%
NOISE	7	7	0	0%
ROWDY OR INCONSIDERATE BEHAV	97	129	-32	-25%
TRESPASS	2	10	-8	-80%
VEHICLE NUIS & INAPPROP VEH US	24	28	-4	-14%
Sum:	151	207	-56	-27%



William Kn

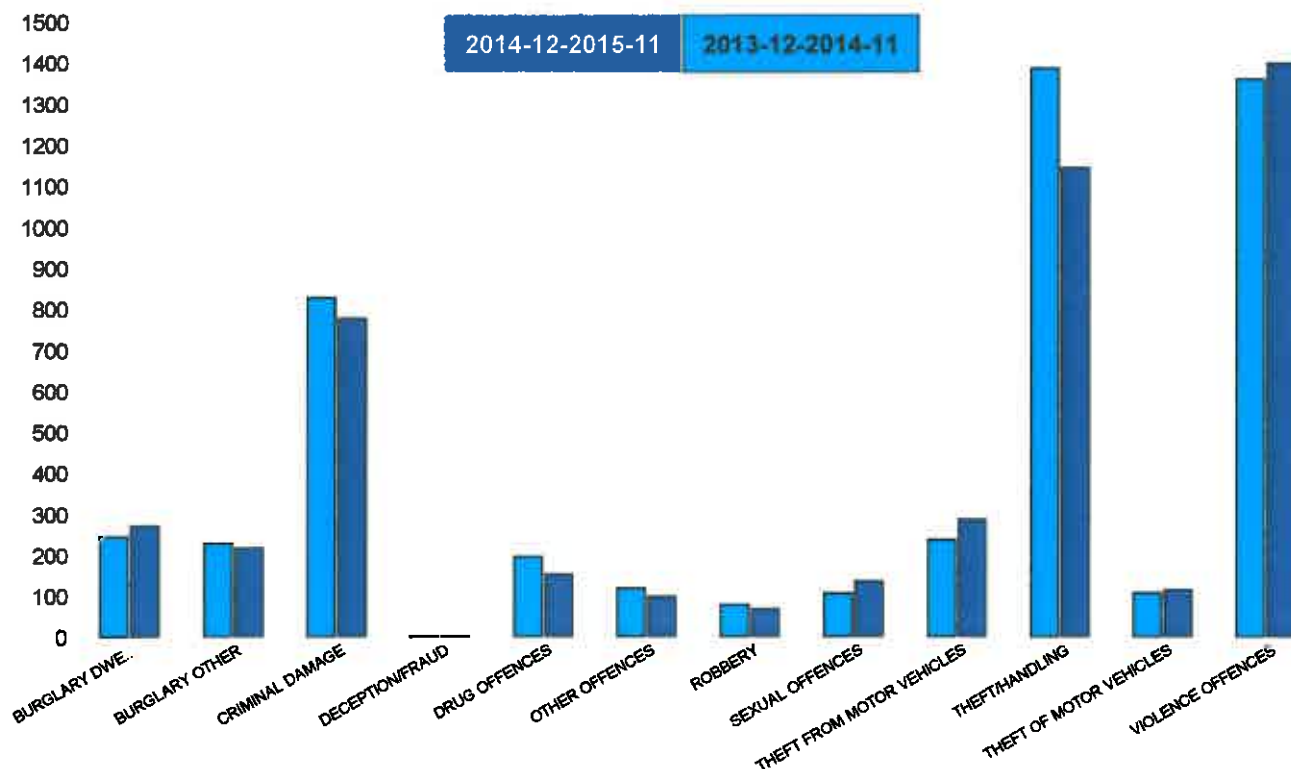
NSIR Closing Cat. 1 Desc	No of Incidents Latest 12 Months	No of Incidents Previous 12 Months	+/- Incidents	% Change Incidents
ANIMAL RELATED INC ANTI-SOCIAL	6	4	2	50%
BEGGING / VAGRANCY	35	15	20	133%
ENV.DAMAGE/ LITTER/ NEEDLES	8	12	-4	-33%
HATE INC (NOT NOTIFIABLE CRIME)	0	1	-1	-100%
MALICIOUS / NUISANCE COMMS	36	39	-3	-8%
NEIGHBOURS	53	57	-4	-7%
NOISE	23	15	8	53%
PROSTITUTION RELATED ACTIVITY	2	0	2	0%
ROWDY OR INCONSIDERATE BEHAV	582	717	-135	-19%
TRESPASS	5	9	-4	-44%
VEHICLE NUIS & INAPPROP VEH US	76	34	42	124%
Sum:	826	903	-77	-9%



Kettering Town Forum Report 2013-12 to 2015-11

Kettering Town SCT - Crime

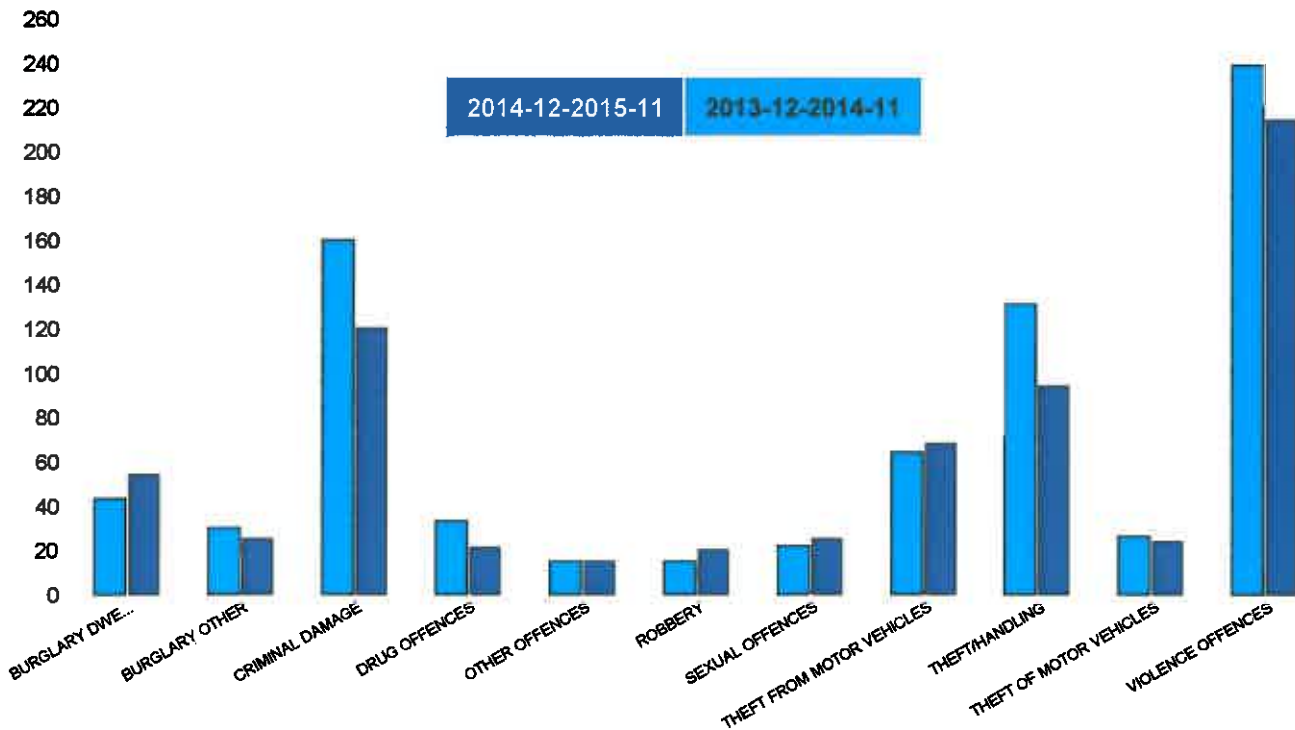
HO Group	No of Crimes Latest 12 Months	No of Crimes Previous 12 Months	+/- Crime	% Change	No of Resolved Outcome Crimes	Detection Rate (Past 12 Months)
BURGLARY DWELLING	271	244	27	11%	16	6%
BURGLARY OTHER	218	228	-10	-4%	14	6%
CRIMINAL DAMAGE	777	828	-51	-6%	150	19%
DECEPTION/FRAUD	1	1	0	0%	1	100%
DRUG OFFENCES	153	195	-42	-22%	136	89%
OTHER OFFENCES	98	118	-20	-17%	48	49%
ROBBERY	68	78	-10	-13%	7	10%
SEXUAL OFFENCES	136	105	31	30%	23	17%
THEFT FROM MOTOR VEHICLES	287	237	50	21%	2	1%
THEFT/HANDLING	1145	1387	-242	-17%	349	30%
THEFT OF MOTOR VEHICLES	114	107	7	7%	17	15%
VIOLENCE OFFENCES	1399	1361	38	3%	456	33%
Sum:	4667	4889	-222	-5%	1219	26%



Kettering Town Forum Report 2013-12 to 2015-11

All Saints

HO Group	No of Crimes Latest 12 Months	No of Crimes Previous 12 Months	+/- Crime	% Change	No of Resolved Outcome Crimes	Detection Rate (Past 12 Months)
BURGLARY DWELLING	54	43	11	26%	1	2%
BURGLARY OTHER	25	30	-5	-17%	2	8%
CRIMINAL DAMAGE	120	160	-40	-25%	27	23%
DRUG OFFENCES	21	33	-12	-36%	20	95%
OTHER OFFENCES	15	15	0	0%	9	60%
ROBBERY	20	15	5	33%	1	5%
SEXUAL OFFENCES	25	22	3	14%	6	24%
THEFT FROM MOTOR VEHICLES	68	64	4	6%	0	0%
THEFT/HANDLING	94	131	-37	-28%	22	23%
THEFT OF MOTOR VEHICLES	24	26	-2	-8%	2	8%
VIOLENCE OFFENCES	214	239	-25	-10%	53	25%
Sum:	680	778	-98	-13%	143	21%

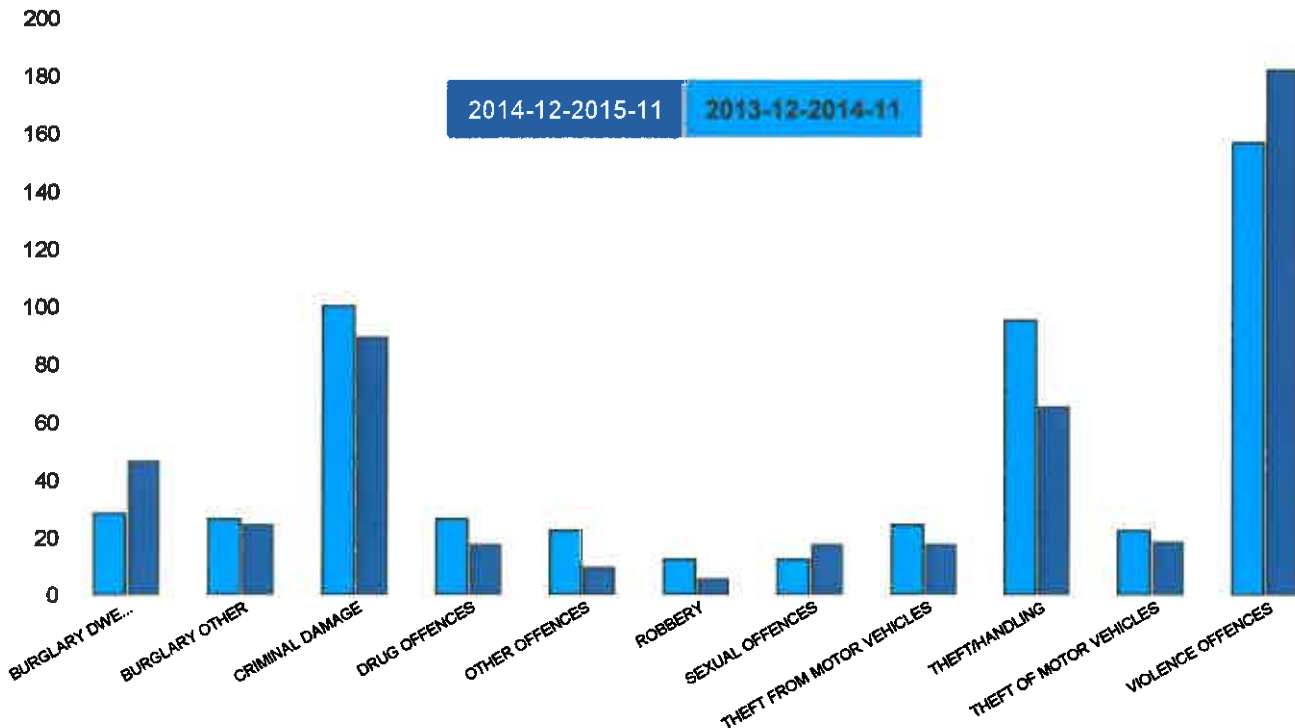


Kettering Town Forum Report 2013-12 to 2015-11

Avondale Grange

HO Group	No of Crimes Latest 12 Months	No of Crimes Previous 12 Months	+/- Crime	% Change
BURGLARY DWELLING	46	28	18	64%
BURGLARY OTHER	24	26	-2	-8%
CRIMINAL DAMAGE	89	100	-11	-11%
DRUG OFFENCES	17	26	-9	-35%
OTHER OFFENCES	9	22	-13	-59%
ROBBERY	5	12	-7	-58%
SEXUAL OFFENCES	17	12	5	42%
THEFT FROM MOTOR VEHICLES	17	24	-7	-29%
THEFT/HANDLING	65	95	-30	-32%
THEFT OF MOTOR VEHICLES	18	22	-4	-18%
VIOLENCE OFFENCES	182	157	25	16%
Sum:	489	524	-35	-7%

No of Resolved Outcome Crimes	Detection Rate (Past 12 Months)
4	9%
1	4%
16	18%
14	82%
0	0%
2	40%
4	24%
0	0%
17	26%
1	6%
60	33%
119	24%

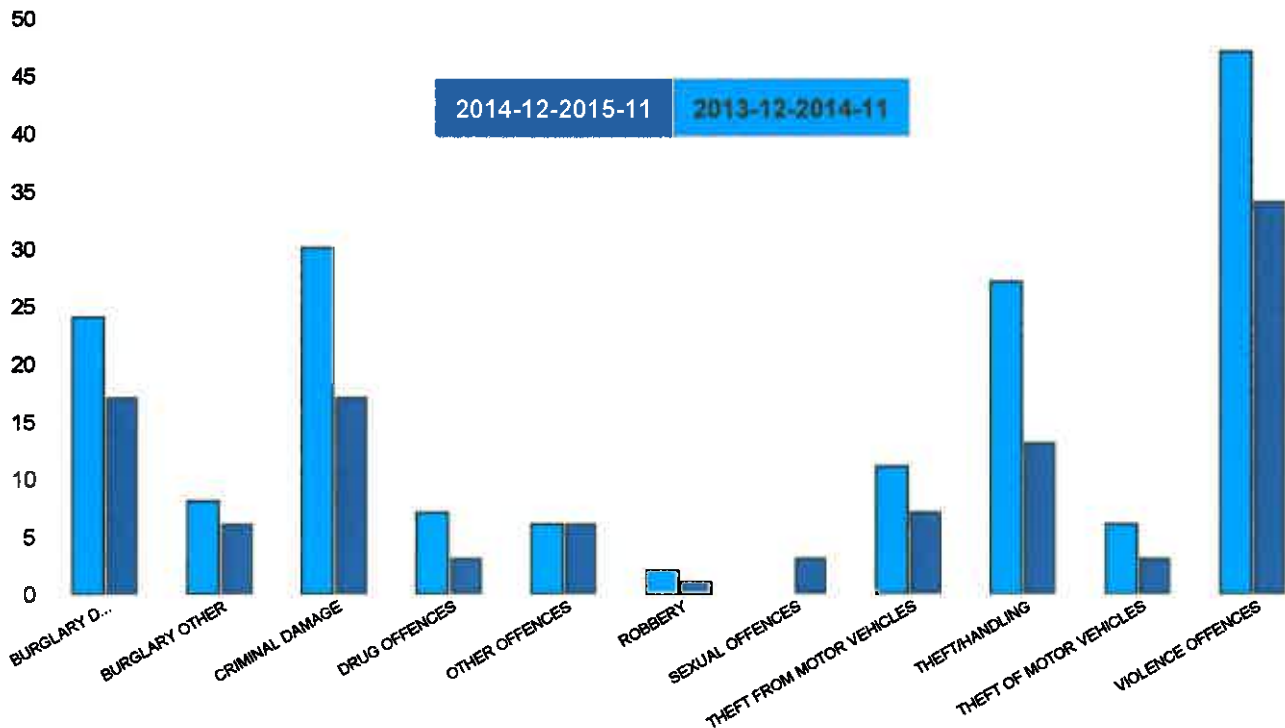


Kettering Town Forum Report 2013-12 to 2015-11

Brambleside

HO Group	No of Crimes Latest 12 Months	No of Crimes Previous 12 Months	+/- Crime	% Change
BURGLARY DWELLING	17	24	-7	-29%
BURGLARY OTHER	6	8	-2	-25%
CRIMINAL DAMAGE	17	30	-13	-43%
DRUG OFFENCES	3	7	-4	-57%
OTHER OFFENCES	6	6	0	0%
ROBBERY	1	2	-1	-50%
SEXUAL OFFENCES	3	0	3	0%
THEFT FROM MOTOR VEHICLES	7	11	-4	-36%
THEFT/HANDLING	13	27	-14	-52%
THEFT OF MOTOR VEHICLES	3	6	-3	-50%
VIOLENCE OFFENCES	34	47	-13	-28%
Sum:	110	168	-58	-35%

No of Resolved Outcome Crimes	Detection Rate (Past 12 Months)
0	0%
0	0%
2	12%
6	200%
6	100%
0	0%
1	33%
0	0%
0	0%
0	0%
8	24%
23	21%

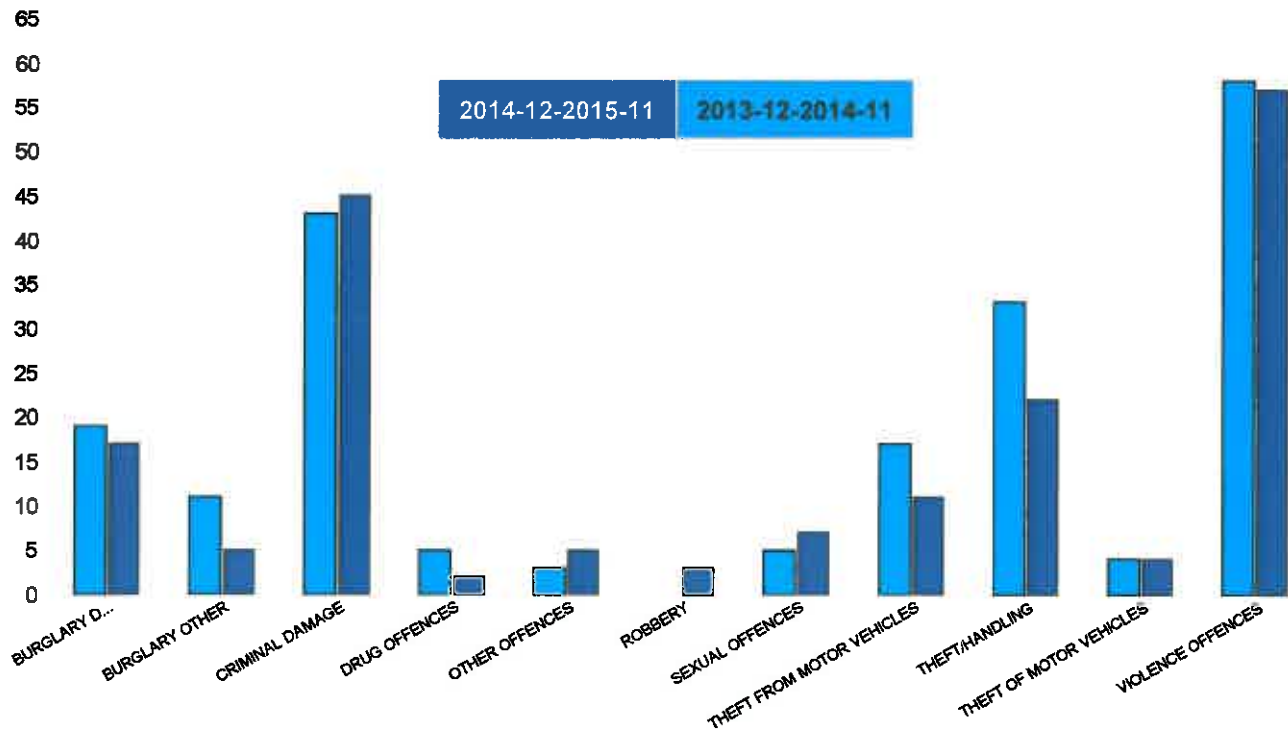


Kettering Town Forum Report 2013-12 to 2015-11

Use Lodge

HO Group	No of Crimes Latest 12 Months	No of Crimes Previous 12 Months	+/- Crime	% Change
BURGLARY DWELLING	17	19	-2	-11%
BURGLARY OTHER	5	11	-6	-55%
CRIMINAL DAMAGE	45	43	2	5%
DRUG OFFENCES	2	5	-3	-60%
OTHER OFFENCES	5	3	2	67%
ROBBERY	3	0	3	0%
SEXUAL OFFENCES	7	5	2	40%
THEFT FROM MOTOR VEHICLES	11	17	-6	-35%
THEFT/HANDLING	22	33	-11	-33%
THEFT OF MOTOR VEHICLES	4	4	0	0%
VIOLENCE OFFENCES	57	58	-1	-2%
Sum:	178	198	-20	-10%

No of Resolved Outcome Crimes	Detection Rate (Past 12 Months)
0	0%
0	0%
4	9%
3	150%
2	40%
0	0%
1	14%
0	0%
6	27%
0	0%
15	26%
31	17%

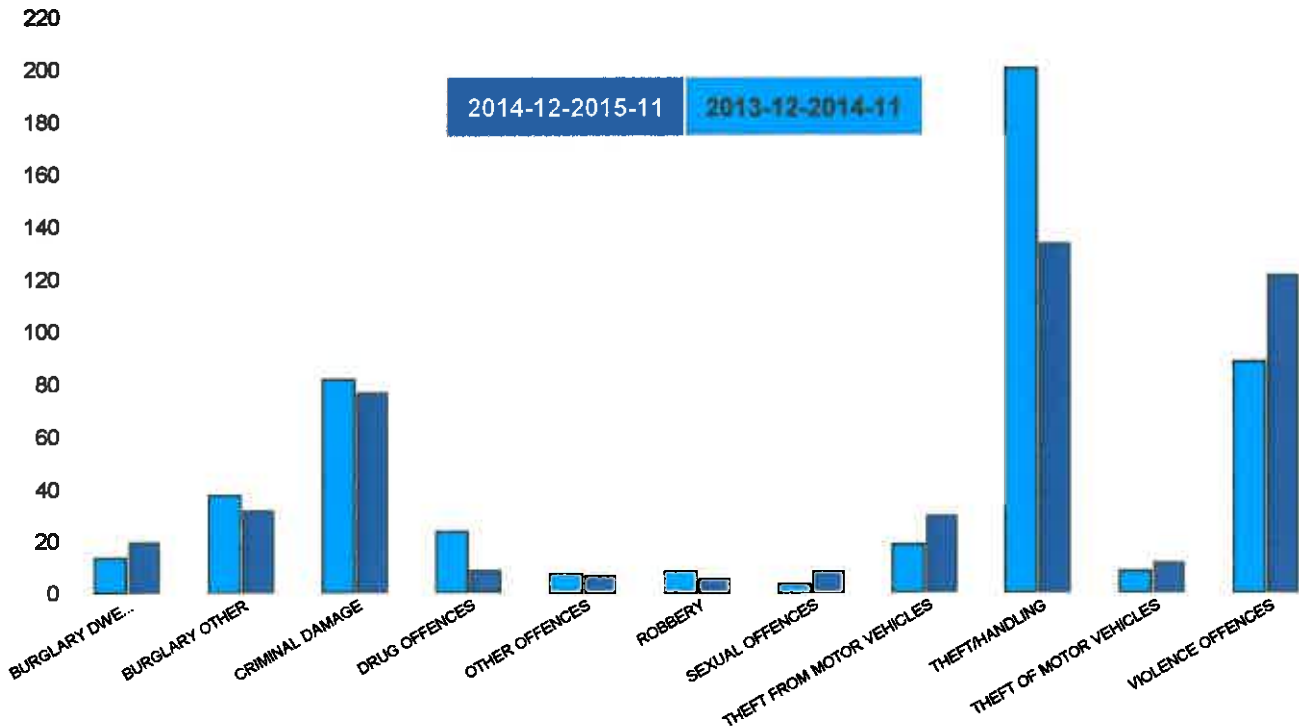


Kettering Town Forum Report 2013-12 to 2015-11

Northfield

HO Group	No of Crimes Latest 12 Months	No of Crimes Previous 12 Months	+/- Crime	% Change
BURGLARY DWELLING	19	13	6	46%
BURGLARY OTHER	31	37	-6	-16%
CRIMINAL DAMAGE	76	81	-5	-6%
DRUG OFFENCES	8	23	-15	-65%
OTHER OFFENCES	6	7	-1	-14%
ROBBERY	5	8	-3	-38%
SEXUAL OFFENCES	8	3	5	167%
THEFT FROM MOTOR VEHICLES	29	18	11	61%
THEFT/HANDLING	133	200	-67	-34%
THEFT OF MOTOR VEHICLES	11	8	3	38%
VIOLENCE OFFENCES	121	88	33	38%
Sum:	447	486	-39	-8%

No of Resolved Outcome Crimes	Detection Rate (Past 12 Months)
1	5%
2	6%
15	20%
8	100%
3	50%
2	40%
1	13%
0	0%
37	28%
2	18%
33	27%
104	23%

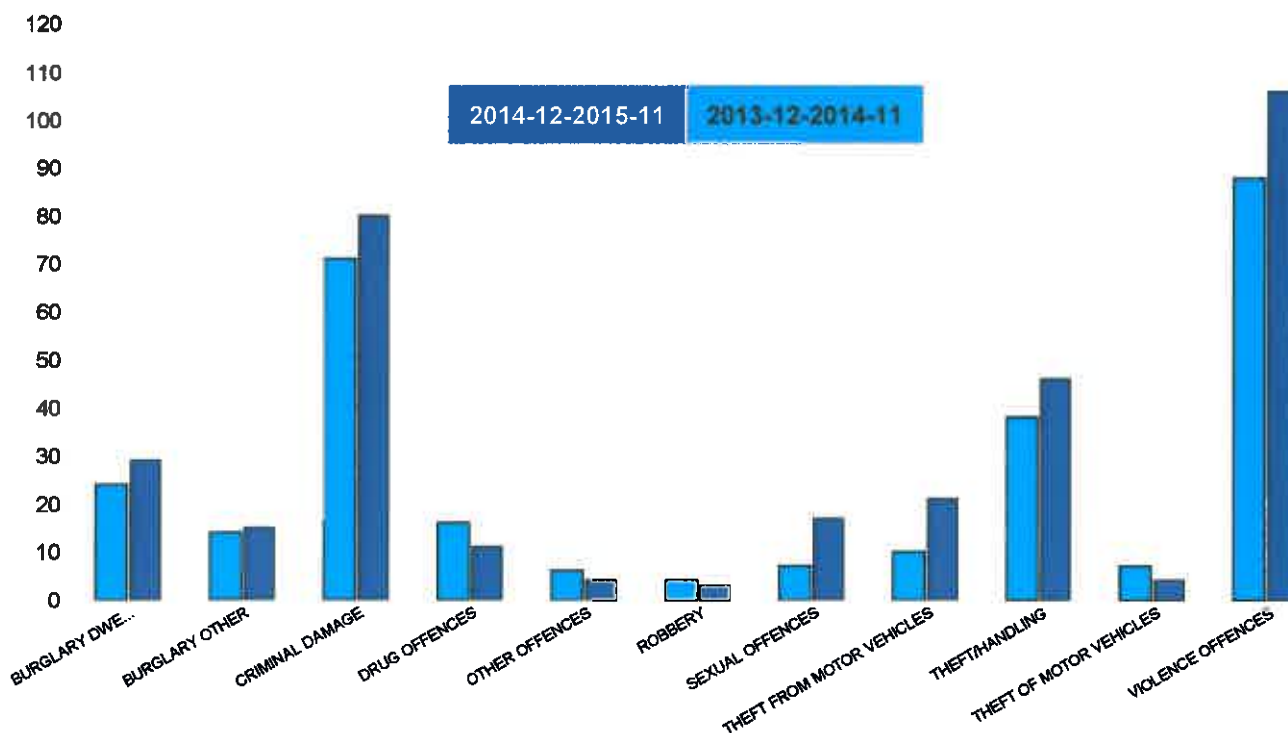


Kettering Town Forum Report 2013-12 to 2015-11

Pipers Hill

HO Group	No of Crimes Latest 12 Months	No of Crimes Previous 12 Months	+/- Crime	% Change
BURGLARY DWELLING	29	24	5	21%
BURGLARY OTHER	15	14	1	7%
CRIMINAL DAMAGE	80	71	9	13%
DRUG OFFENCES	11	16	-5	-31%
OTHER OFFENCES	4	6	-2	-33%
ROBBERY	3	4	-1	-25%
SEXUAL OFFENCES	17	7	10	143%
THEFT FROM MOTOR VEHICLES	21	10	11	110%
THEFT/HANDLING	46	38	8	21%
THEFT OF MOTOR VEHICLES	4	7	-3	-43%
VIOLENCE OFFENCES	106	88	18	20%
Sum:	336	285	51	18%

No of Resolved Outcome Crimes	Detection Rate (Past 12 Months)
2	7%
1	7%
8	10%
7	64%
2	50%
0	0%
1	6%
0	0%
8	17%
0	0%
31	29%
60	18%

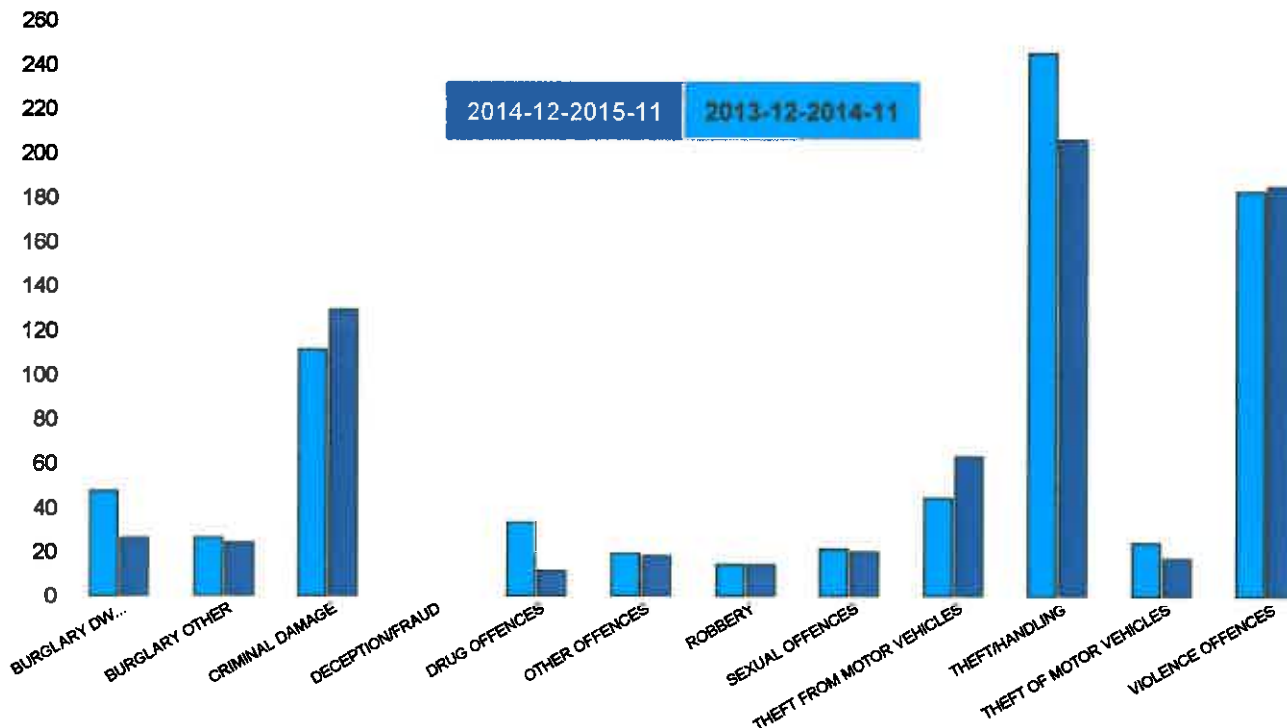


Kettering Town Forum Report 2013-12 to 2015-11

St Michaels and Wicksteed

HO Group	No of Crimes Latest 12 Months	No of Crimes Previous 12 Months	+/- Crime	% Change
BURGLARY DWELLING	26	47	-21	-45%
BURGLARY OTHER	24	26	-2	-8%
CRIMINAL DAMAGE	129	111	18	16%
DECEPTION/FRAUD	0	0	0	#DIV/0
DRUG OFFENCES	11	33	-22	-67%
OTHER OFFENCES	18	19	-1	-5%
ROBBERY	14	14	0	0%
SEXUAL OFFENCES	20	21	-1	-5%
THEFT FROM MOTOR VEHICLES	63	44	19	43%
THEFT/HANDLING	206	245	-39	-16%
THEFT OF MOTOR VEHICLES	17	24	-7	-29%
VIOLENCE OFFENCES	185	183	2	1%
Sum:	713	767	-54	-7%

No of Resolved Outcome Crimes	Detection Rate (Past 12 Months)
3	12%
3	13%
27	21%
0	0%
8	73%
5	28%
1	7%
3	15%
1	2%
63	31%
3	18%
59	32%
176	25%

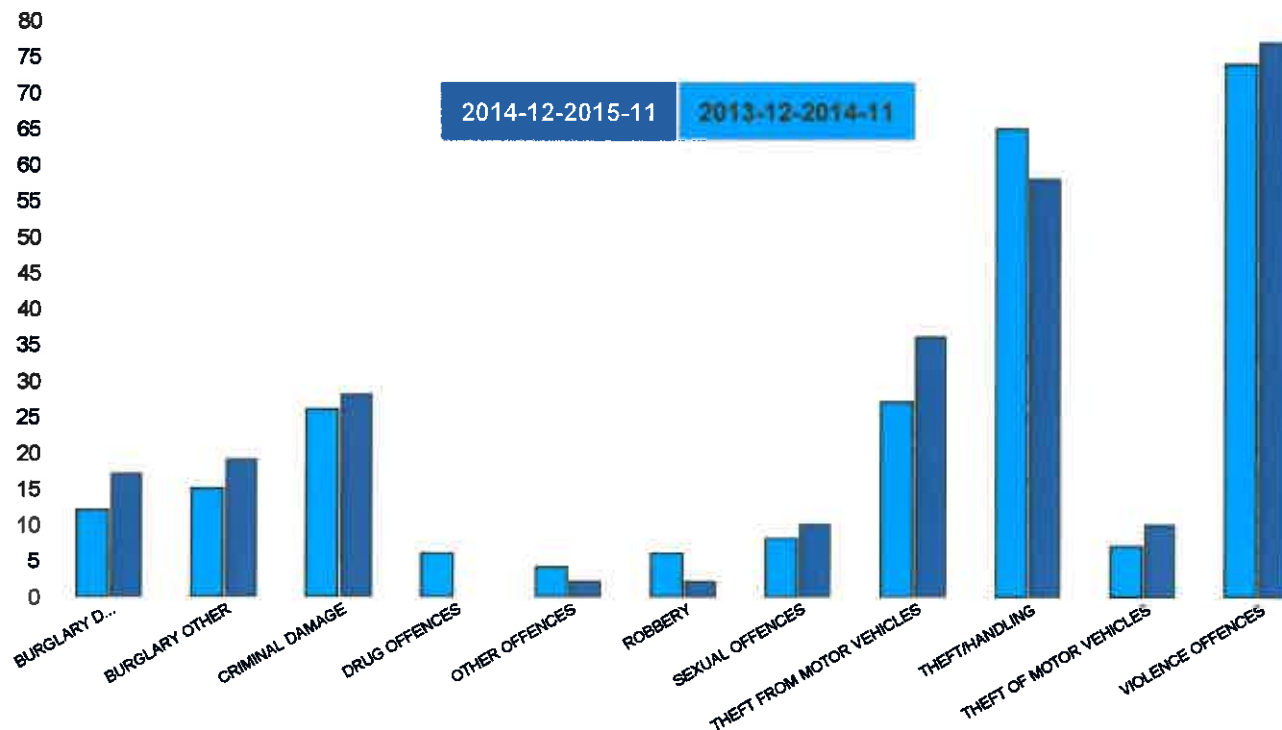


Kettering Town Forum Report 2013-12 to 2015-11

St Peters

HO Group	No of Crimes Latest 12 Months	No of Crimes Previous 12 Months	+/- Crime	% Change
BURGLARY DWELLING	17	12	5	42%
BURGLARY OTHER	19	15	4	27%
CRIMINAL DAMAGE	28	26	2	8%
DRUG OFFENCES	0	6	-6	-100%
OTHER OFFENCES	2	4	-2	-50%
ROBBERY	2	6	-4	-67%
SEXUAL OFFENCES	10	8	2	25%
THEFT FROM MOTOR VEHICLES	36	27	9	33%
THEFT/HANDLING	58	65	-7	-11%
THEFT OF MOTOR VEHICLES	10	7	3	43%
VIOLENCE OFFENCES	77	74	3	4%
Sum:	259	250	9	4%

No of Resolved Outcome Crimes	Detection Rate (Past 12 Months)
1	6%
0	0%
7	25%
1	0%
1	50%
0	0%
3	30%
0	0%
9	16%
1	10%
26	34%
49	19%

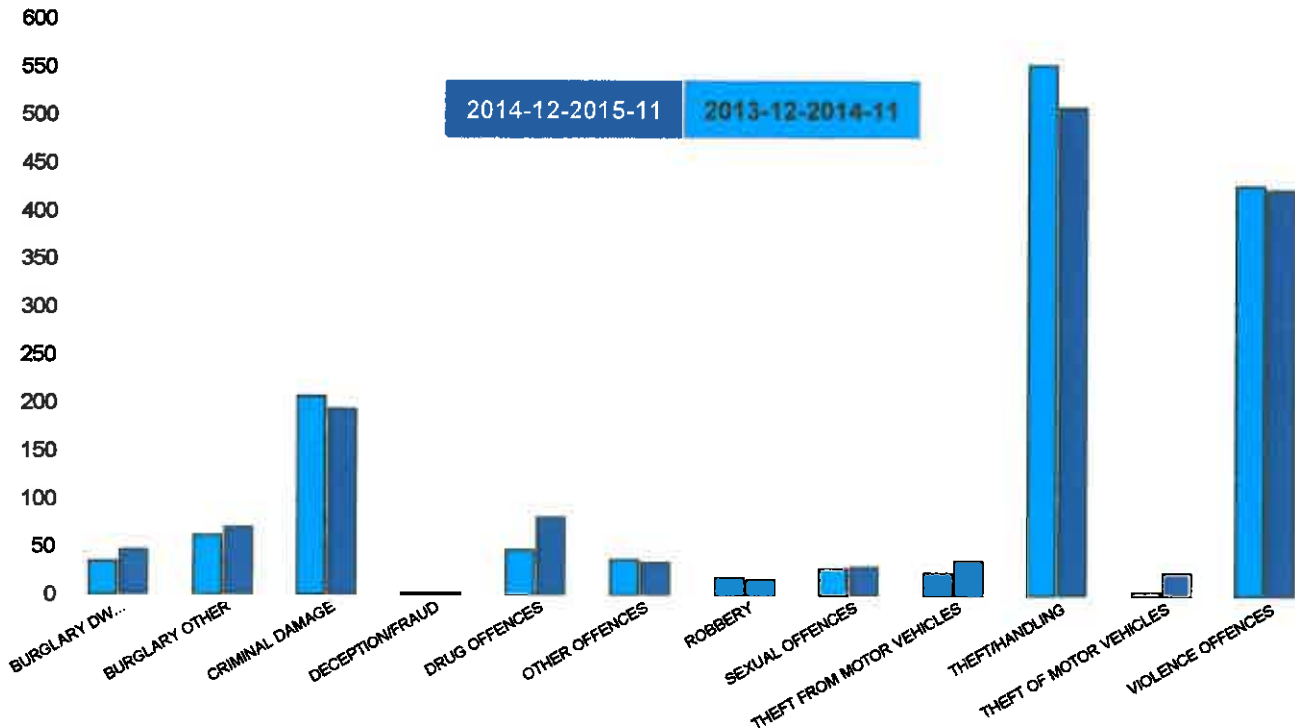


Kettering Town Forum Report 2013-12 to 2015-11

William Knibb

HO Group	No of Crimes Latest 12 Months	No of Crimes Previous 12 Months	+/- Crime	% Change
BURGLARY DWELLING	46	34	12	35%
BURGLARY OTHER	69	61	8	13%
CRIMINAL DAMAGE	193	206	-13	-6%
DECEPTION/FRAUD	1	1	0	0%
DRUG OFFENCES	80	46	34	74%
OTHER OFFENCES	33	36	-3	-8%
ROBBERY	15	17	-2	-12%
SEXUAL OFFENCES	29	27	2	7%
THEFT FROM MOTOR VEHICLES	35	22	13	59%
THEFT/HANDLING	508	553	-45	-8%
THEFT OF MOTOR VEHICLES	23	3	20	667%
VIOLENCE OFFENCES	423	427	-4	-1%
Sum:	1455	1433	22	2%

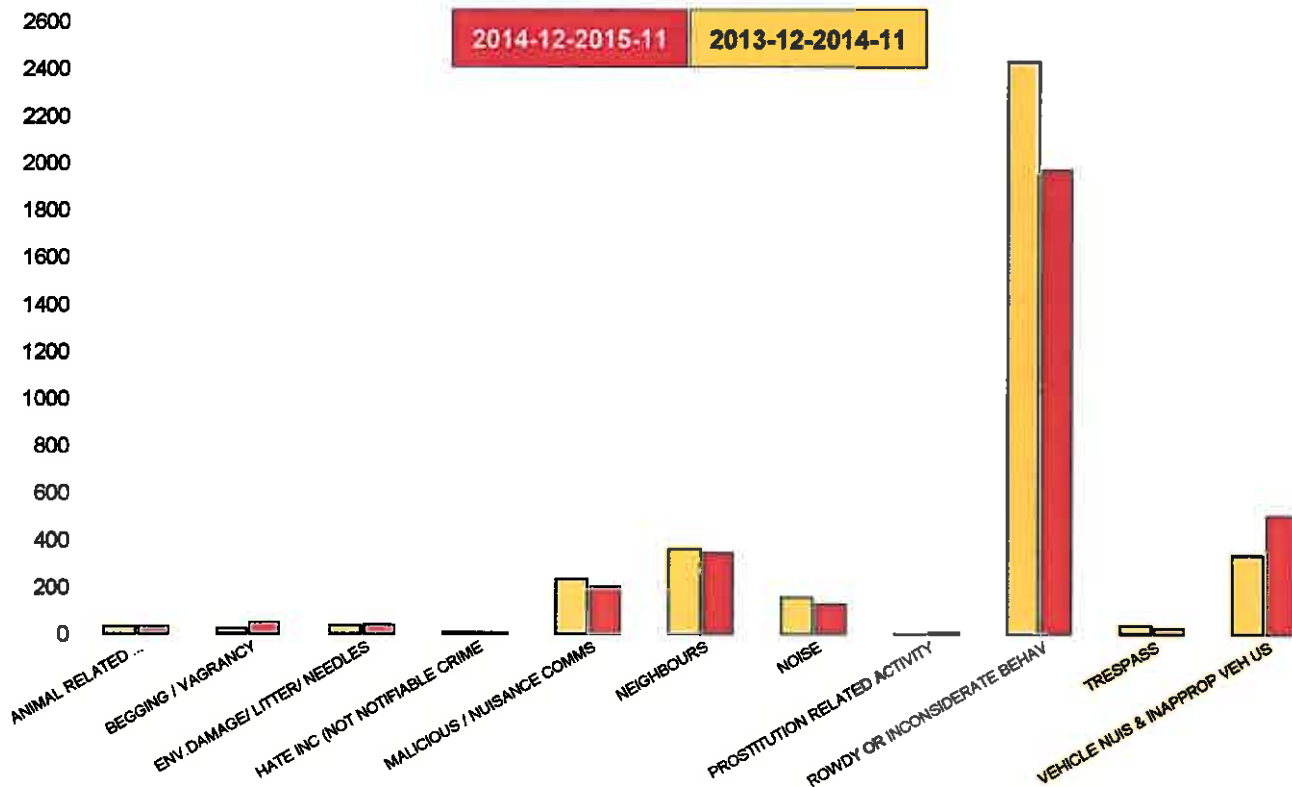
No of Resolved Outcome Crimes	Detection Rate (Past 12 Months)
4	9%
5	7%
44	23%
1	100%
69	86%
20	61%
1	7%
3	10%
1	3%
187	37%
8	35%
171	40%
514	35%



Kettering Town Forum Report 2013-12 to 2015-11

Kettering Town SCT - ASB

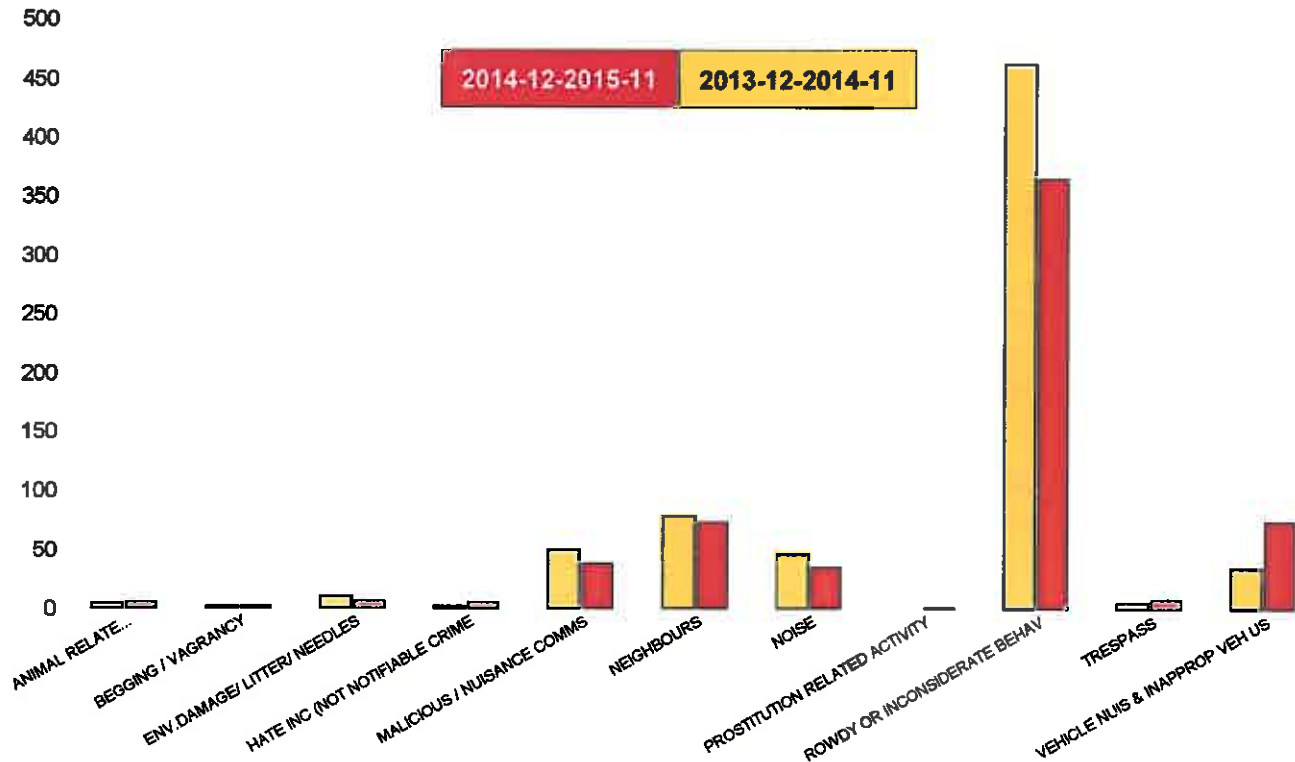
NSIR Closing Cat. 1 Desc	No of Incidents Latest 12 Months	No of Incidents Previous 12 Months	+/- Incidents	% Change Incidents
ANIMAL RELATED INC ANTI-SOCIAL	32	31	1	3%
BEGGING / VAGRANCY	48	22	26	118%
ENV.DAMAGE/ LITTER/ NEEDLES	36	33	3	9%
HATE INC (NOT NOTIFIABLE CRIME	6	9	-3	-33%
MALICIOUS / NUISANCE COMMS	200	234	-34	-15%
NEIGHBOURS	344	359	-15	-4%
NOISE	126	155	-29	-19%
PROSTITUTION RELATED ACTIVITY	4	1	3	300%
ROWDY OR INCONSIDERATE BEHAV	1969	2427	-458	-19%
TRESPASS	22	34	-12	-35%
VEHICLE NUIS & INAPPROP VEH US	503	332	171	52%
Sum:	3290	3637	-347	-10%



Kettering Town Forum Report 2013-12 to 2015-11

All Saints

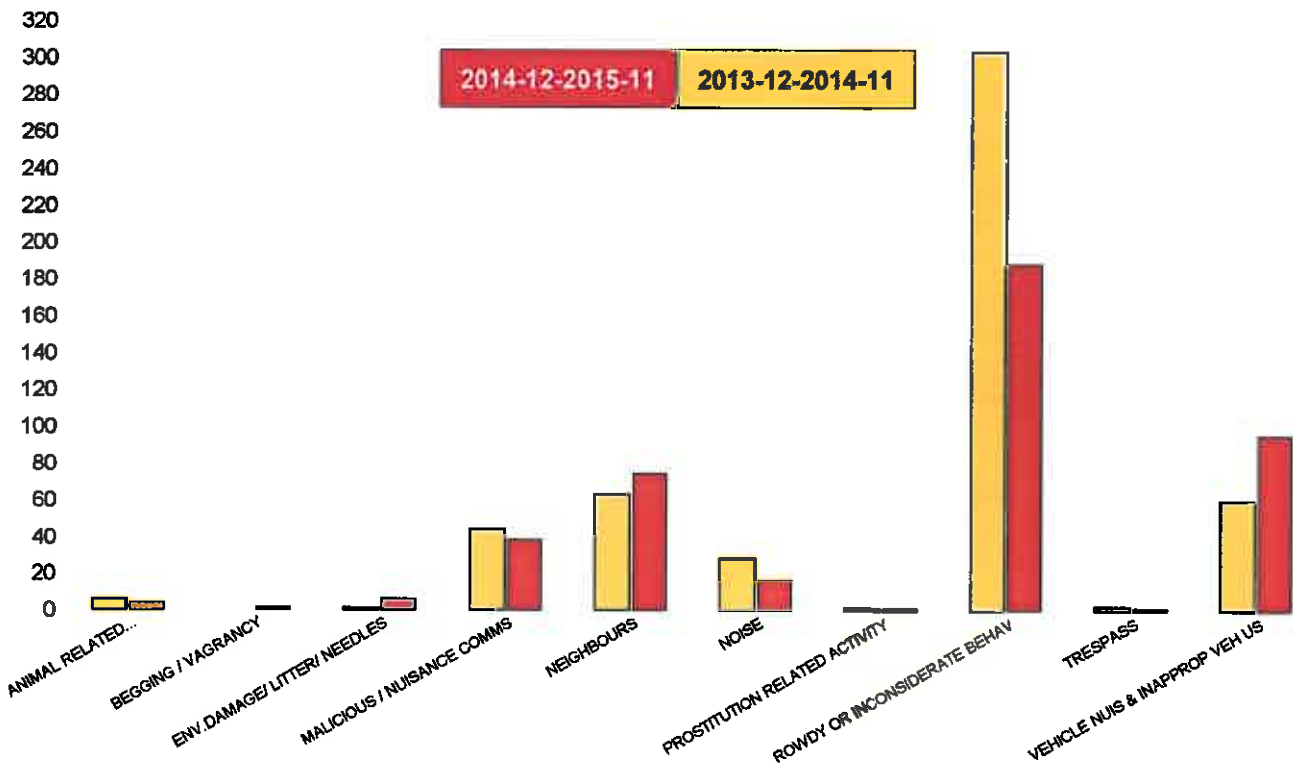
NSIR Closing Cat. 1 Desc	No of Incidents Latest 12 Months	No of Incidents Previous 12 Months	+/- Incidents	% Change Incidents
ANIMAL RELATED INC ANTI-SOCIAL	5	4	1	25%
BEGGING / VAGRANCY	2	2	0	0%
ENV.DAMAGE/ LITTER/ NEEDLES	6	10	-4	-40%
HATE INC (NOT NOTIFIABLE CRIME	5	2	3	150%
MALICIOUS / NUISANCE COMMS	38	50	-12	-24%
NEIGHBOURS	73	78	-5	-6%
NOISE	35	46	-11	-24%
PROSTITUTION RELATED ACTIVITY	1	0	1	0%
ROWDY OR INCONSIDERATE BEHAV	365	462	-97	-21%
TRESPASS	8	5	3	60%
VEHICLE NUIS & INAPPROP VEH US	74	35	39	111%
Sum:	612	694	-82	-12%



Kettering Town Forum Report 2013-12 to 2015-11

Avondale Grange

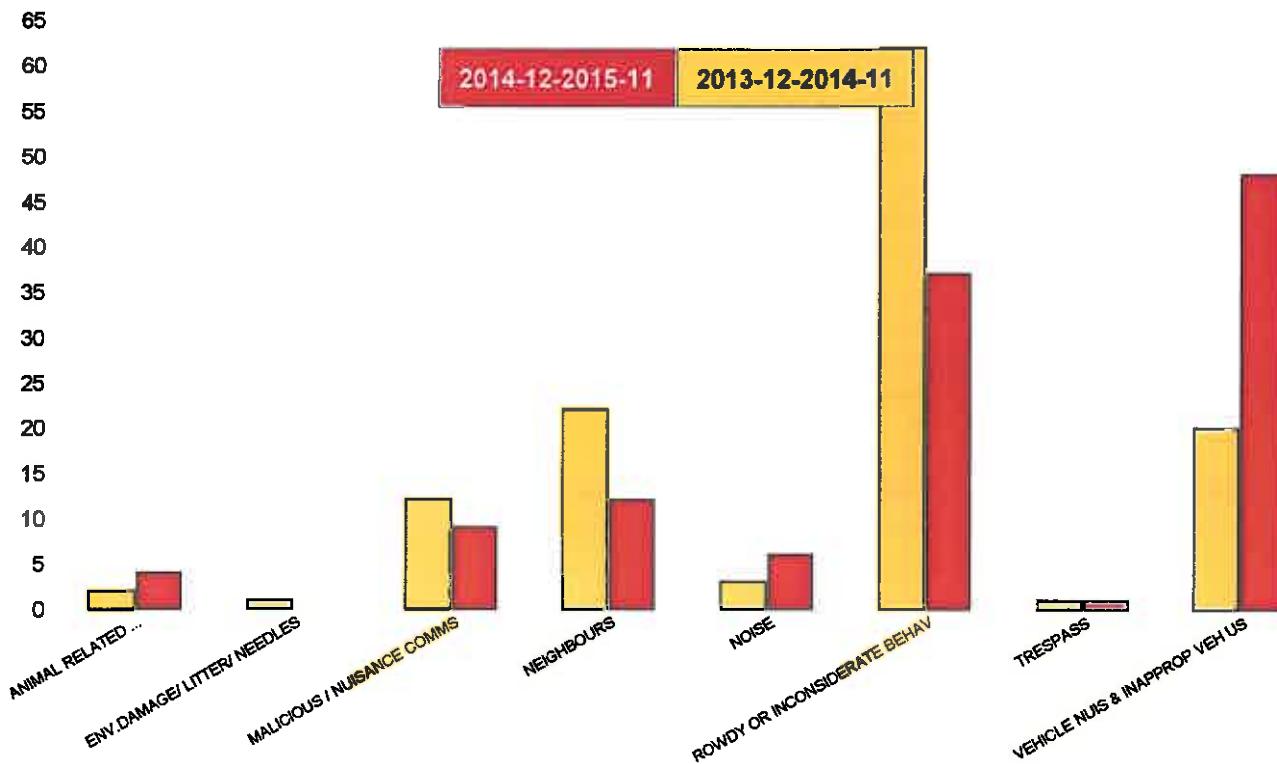
NSIR Closing Cat. 1 Desc	No of Incidents Latest 12 Months	No of Incidents Previous 12 Months	+/- Incidents	% Change Incidents
ANIMAL RELATED INC ANTI-SOCIAL	4	6	-2	-33%
BEGGING / VAGRANCY	1	0	1	0%
ENV.DAMAGE/ LITTER/ NEEDLES	6	1	5	500%
MALICIOUS / NUISANCE COMMS	38	44	-6	-14%
NEIGHBOURS	74	63	11	17%
NOISE	16	28	-12	-43%
PROSTITUTION RELATED ACTIVITY	1	1	0	0%
ROWDY OR INCONSIDERATE BEHAV	188	303	-115	-38%
TRESPASS	1	2	-1	-50%
VEHICLE NUIS & INAPPROP VEH US	95	60	35	58%
Sum:	424	508	-84	-17%



Kettering Town Forum Report 2013-12 to 2015-11

Brambleside

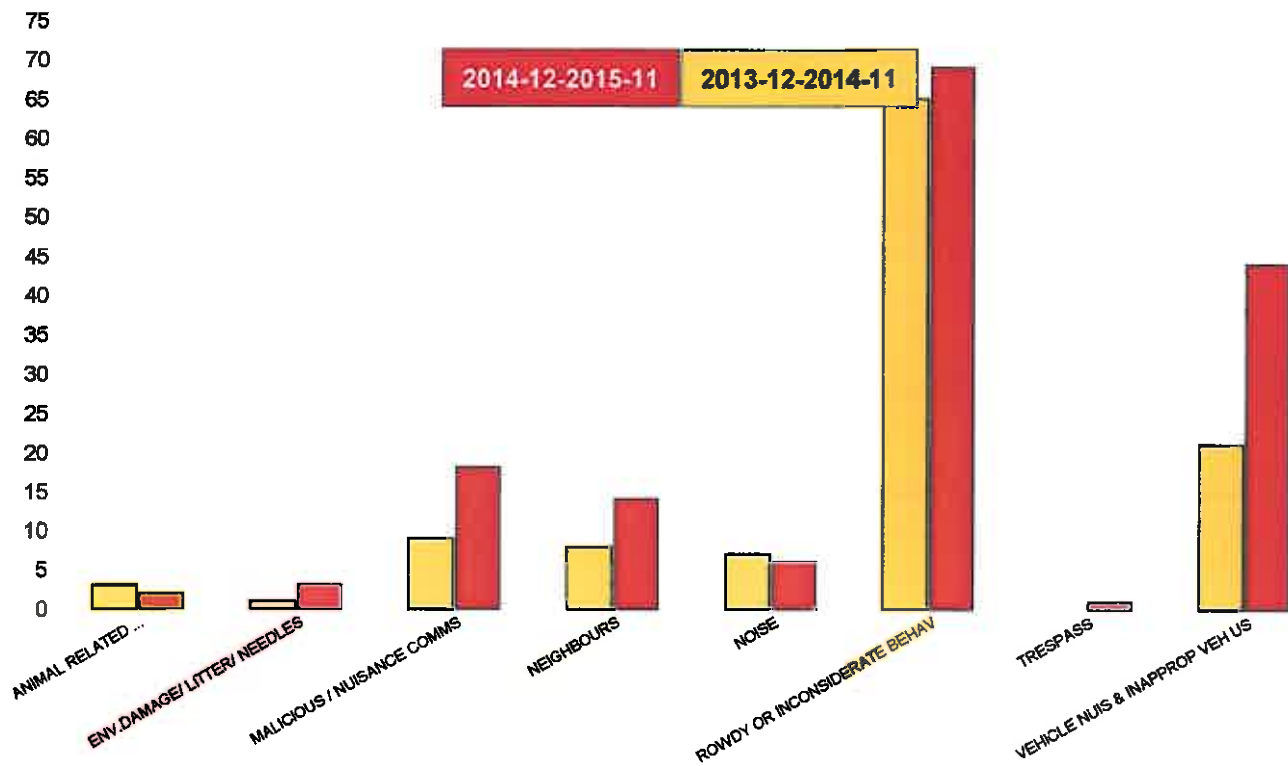
NSIR Closing Cat. 1 Desc	No of Incidents Latest 12 Months	No of Incidents Previous 12 Months	+/- Incidents	% Change Incidents
ANIMAL RELATED INC ANTI-SOCIAL	4	2	2	100%
ENV.DAMAGE/ LITTER/ NEEDLES	0	1	-1	-100%
MALICIOUS / NUISANCE COMMS	9	12	-3	-25%
NEIGHBOURS	12	22	-10	-45%
NOISE	6	3	3	100%
ROWDY OR INCONSIDERATE BEHAV	37	62	-25	-40%
TRESPASS	1	1	0	0%
VEHICLE NUIS & INAPPROP VEH US	48	20	28	140%
Sum:	117	123	-6	-5%



Kettering Town Forum Report 2013-12 to 2015-11

Ise Lodge

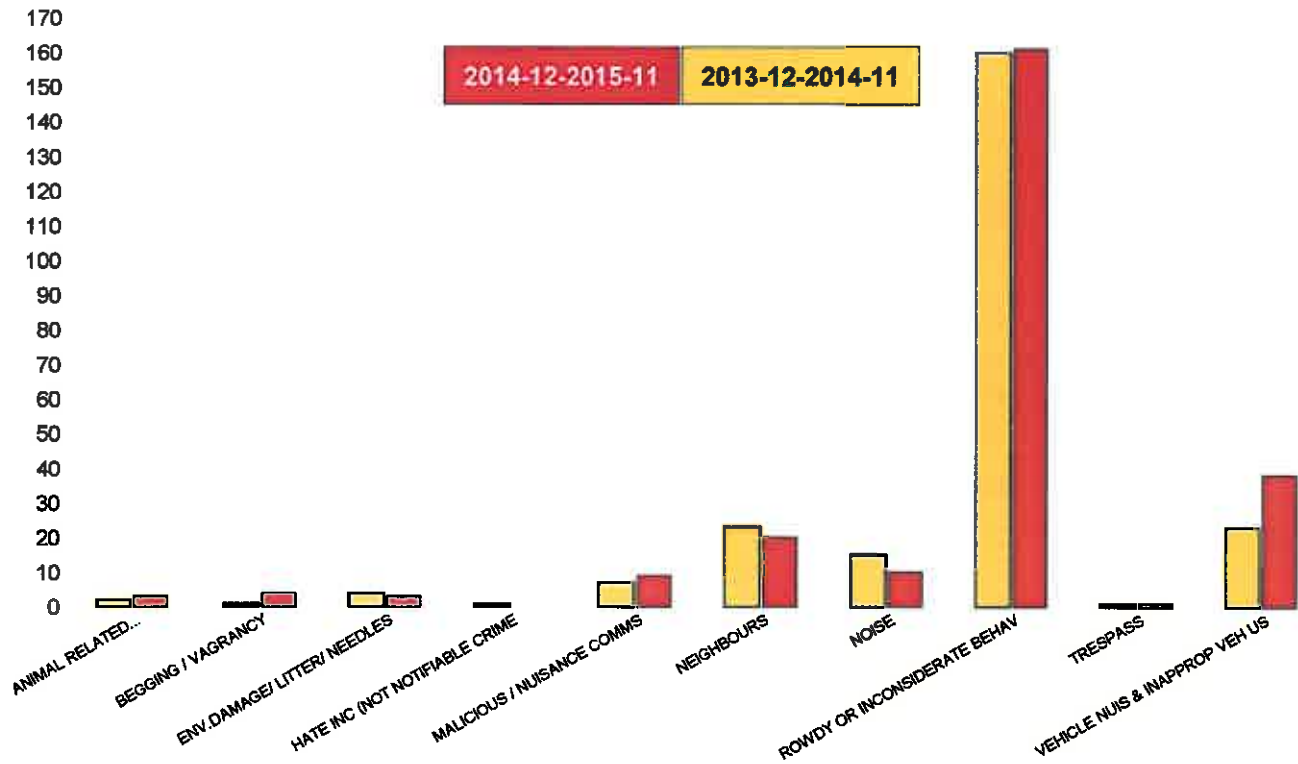
NSIR Closing Cat. 1 Desc	No of Incidents Latest 12 Months	No of Incidents Previous 12 Months	+/- Incidents	% Change Incidents
ANIMAL RELATED INC ANTI-SOCIAL	2	3	-1	-33%
ENV.DAMAGE/ LITTER/ NEEDLES	3	1	2	200%
MALICIOUS / NUISANCE COMMS	18	9	9	100%
NEIGHBOURS	14	8	6	75%
NOISE	6	7	-1	-14%
ROWDY OR INCONSIDERATE BEHAV	69	65	4	6%
TRESPASS	1	0	1	0%
VEHICLE NUIS & INAPPROP VEH US	44	21	23	110%
Sum:	157	114	43	38%



Kettering Town Forum Report 2013-12 to 2015-11

Northfield

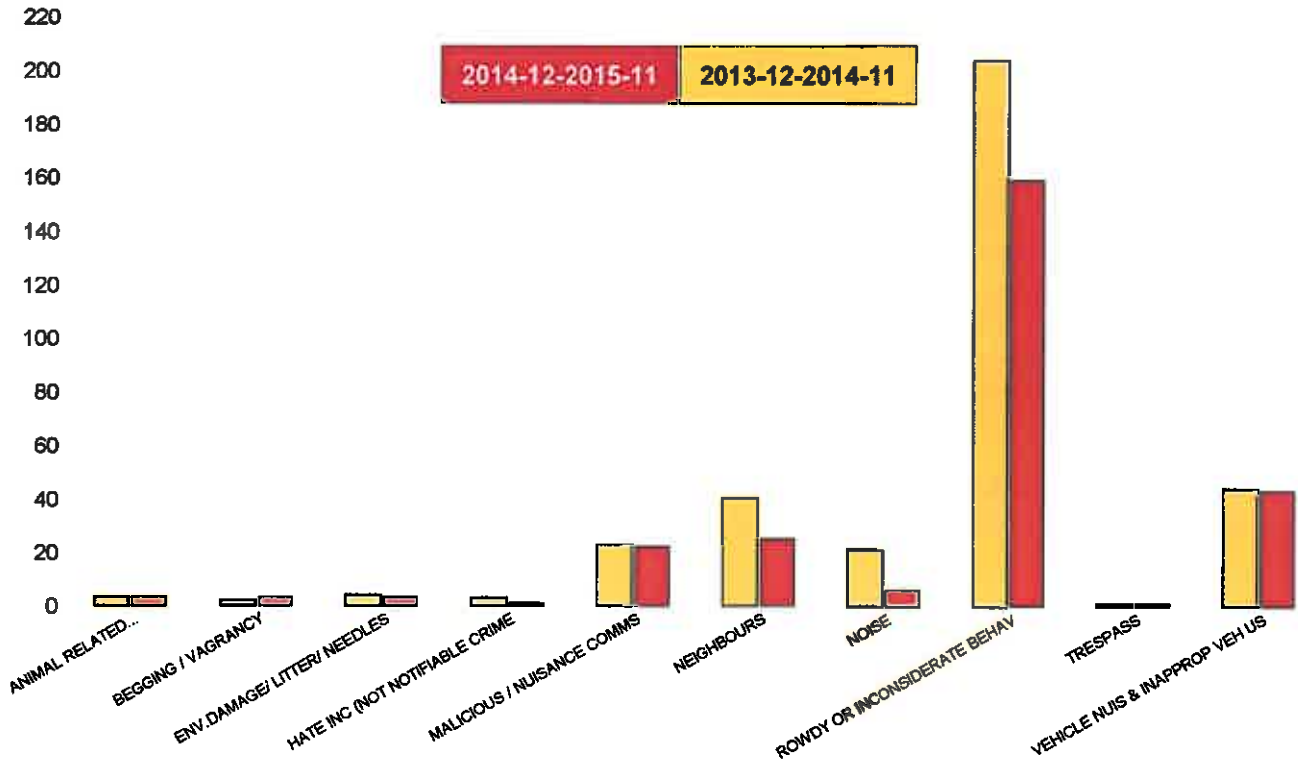
NSIR Closing Cat. 1 Desc	No of Incidents Latest 12 Months	No of Incidents Previous 12 Months	+/- Incidents	% Change Incidents
ANIMAL RELATED INC ANTI-SOCIAL	3	2	1	50%
BEGGING / VAGRANCY	4	1	3	300%
ENV.DAMAGE/ LITTER/ NEEDLES	3	4	-1	-25%
HATE INC (NOT NOTIFIABLE CRIME	0	1	-1	-100%
MALICIOUS / NUISANCE COMMS	9	7	2	29%
NEIGHBOURS	20	23	-3	-13%
NOISE	10	15	-5	-33%
ROWDY OR INCONSIDERATE BEHAV	161	160	1	1%
TRESPASS	1	1	0	0%
VEHICLE NUIS & INAPPROP VEH US	38	23	15	65%
Sum:	249	237	12	5%



Kettering Town Forum Report 2013-12 to 2015-11

Pipers Hill

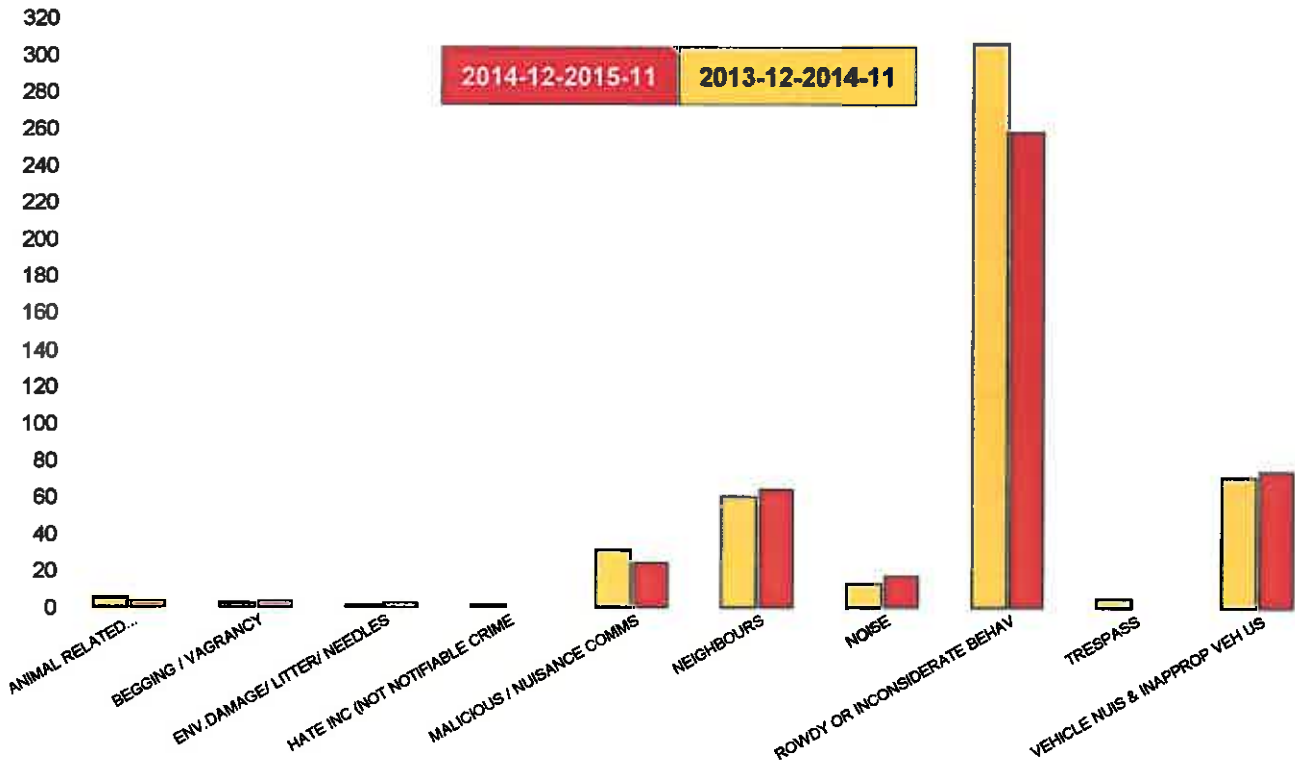
NSIR Closing Cat. 1 Desc	No of Incidents Latest 12 Months	No of Incidents Previous 12 Months	+/- Incidents	% Change Incidents
ANIMAL RELATED INC ANTI-SOCIAL	3	3	0	0%
BEGGING / VAGRANCY	3	2	1	50%
ENV.DAMAGE/ LITTER/ NEEDLES	3	4	-1	-25%
HATE INC (NOT NOTIFIABLE CRIME	1	3	-2	-67%
MALICIOUS / NUISANCE COMMS	22	23	-1	-4%
NEIGHBOURS	25	40	-15	-38%
NOISE	6	21	-15	-71%
ROWDY OR INCONSIDERATE BEHAV	159	204	-45	-22%
TRESPASS	1	1	0	0%
VEHICLE NUIS & INAPPROP VEH US	43	44	-1	-2%
Sum:	266	345	-79	-23%



Kettering Town Forum Report 2013-12 to 2015-11

St Michaels and Wicksteed

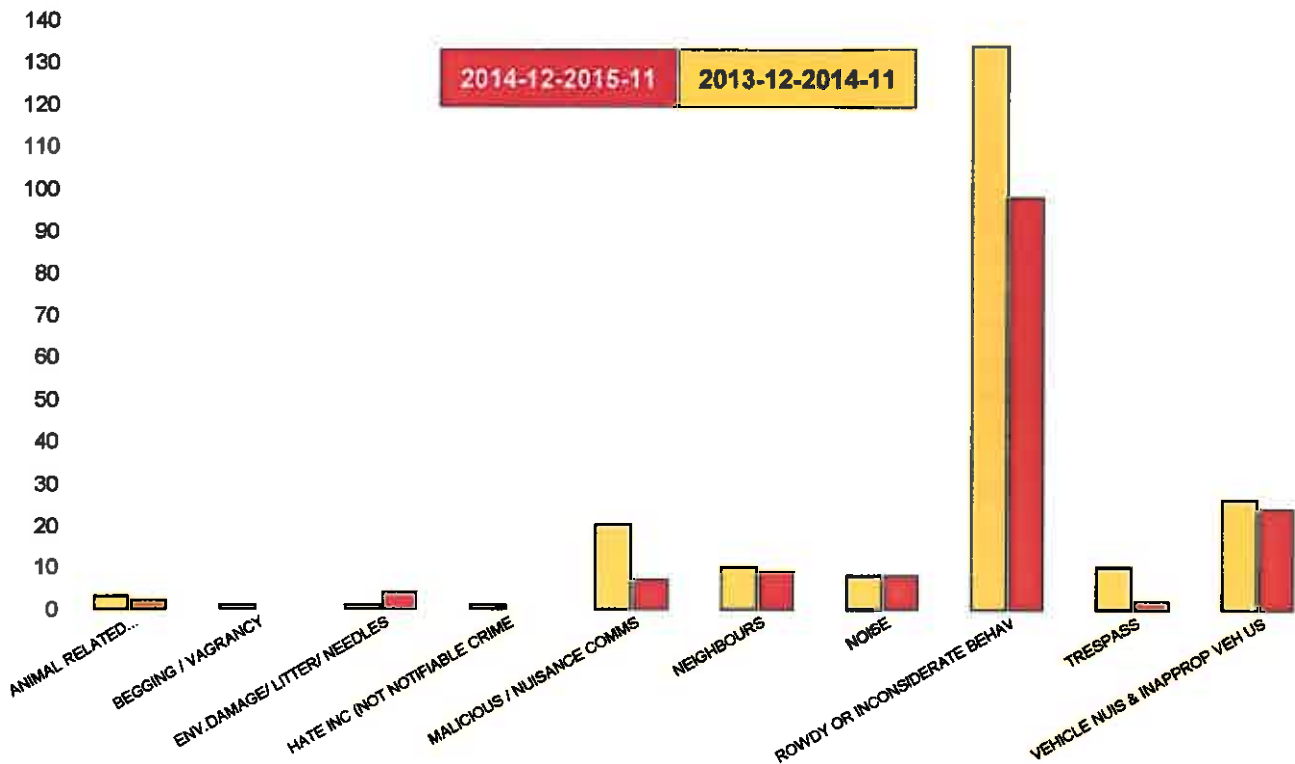
NSIR Closing Cat. 1 Desc	No of Incidents Latest 12 Months	No of Incidents Previous 12 Months	+/- Incidents	% Change Incidents
ANIMAL RELATED INC ANTI-SOCIAL	3	5	-2	-40%
BEGGING / VAGRANCY	3	2	1	50%
ENV.DAMAGE/ LITTER/ NEEDLES	2	1	1	100%
HATE INC (NOT NOTIFIABLE CRIME	0	1	-1	-100%
MALICIOUS / NUISANCE COMMS	24	31	-7	-23%
NEIGHBOURS	64	60	4	7%
NOISE	17	13	4	31%
ROWDY OR INCONSIDERATE BEHAV	258	306	-48	-16%
TRESPASS	0	5	-5	-100%
VEHICLE NUIS & INAPPROP VEH US	74	71	3	4%
Sum:	445	495	-50	-10%



Kettering Town Forum Report 2013-12 to 2015-11

St Peters

NSIR Closing Cat. 1 Desc	No of Incidents Latest 12 Months	No of Incidents Previous 12 Months	+/- Incidents	% Change Incidents
ANIMAL RELATED INC ANTI-SOCIAL	2	3	-1	-33%
BEGGING / VAGRANCY	0	1	-1	-100%
ENV.DAMAGE/ LITTER/ NEEDLES	4	1	3	300%
HATE INC (NOT NOTIFIABLE CRIME	0	1	-1	-100%
MALICIOUS / NUISANCE COMMS	7	20	-13	-65%
NEIGHBOURS	9	10	-1	-10%
NOISE	8	8	0	0%
ROWDY OR INCONSIDERATE BEHAV	98	134	-36	-27%
TRESPASS	2	10	-8	-80%
VEHICLE NUIS & INAPPROP VEH US	24	26	-2	-8%
Sum:	154	214	-60	-28%



Kettering Town Forum Report 2013-12 to 2015-11

William Knibb

NSIR Closing Cat. 1 Desc	No of Incidents Latest 12 Months	No of Incidents Previous 12 Months	+/- Incidents	% Change Incidents
ANIMAL RELATED INC ANTI-SOCIAL	6	3	3	100%
BEGGING / VAGRANCY	35	14	21	150%
ENV.DAMAGE/ LITTER/ NEEDLES	9	10	-1	-10%
HATE INC (NOT NOTIFIABLE CRIME	0	1	-1	-100%
MALICIOUS / NUISANCE COMMS	35	38	-3	-8%
NEIGHBOURS	53	55	-2	-4%
NOISE	22	14	8	57%
PROSTITUTION RELATED ACTIVITY	2	0	2	0%
ROWDY OR INCONSIDERATE BEHAV	634	731	-97	-13%
TRESPASS	7	9	-2	-22%
VEHICLE NUIS & INAPPROP VEH US	63	32	31	97%
Sum:	866	907	-41	-5%

