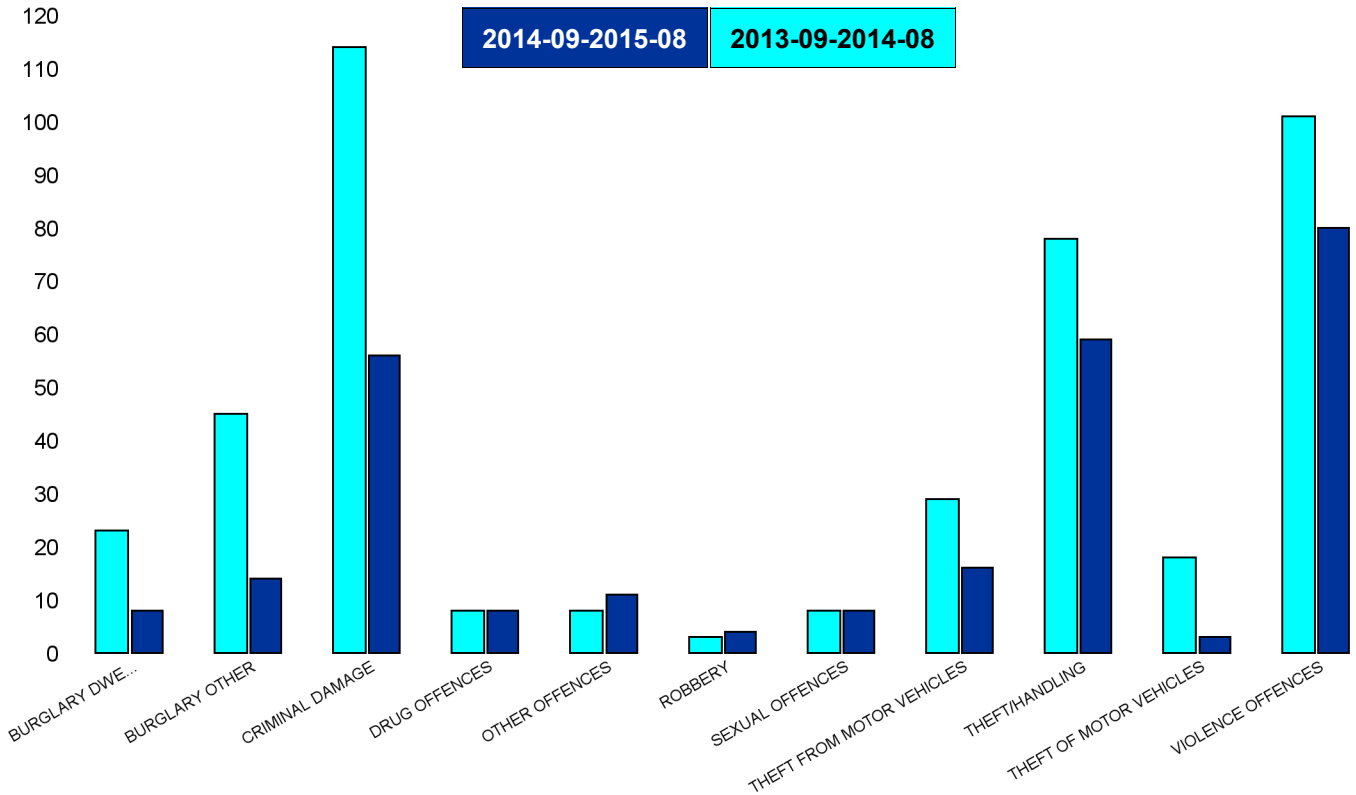


## A6 Towns Forum Report 2013-09 to 2015-08

### K006 & K007 Desborough - Crime

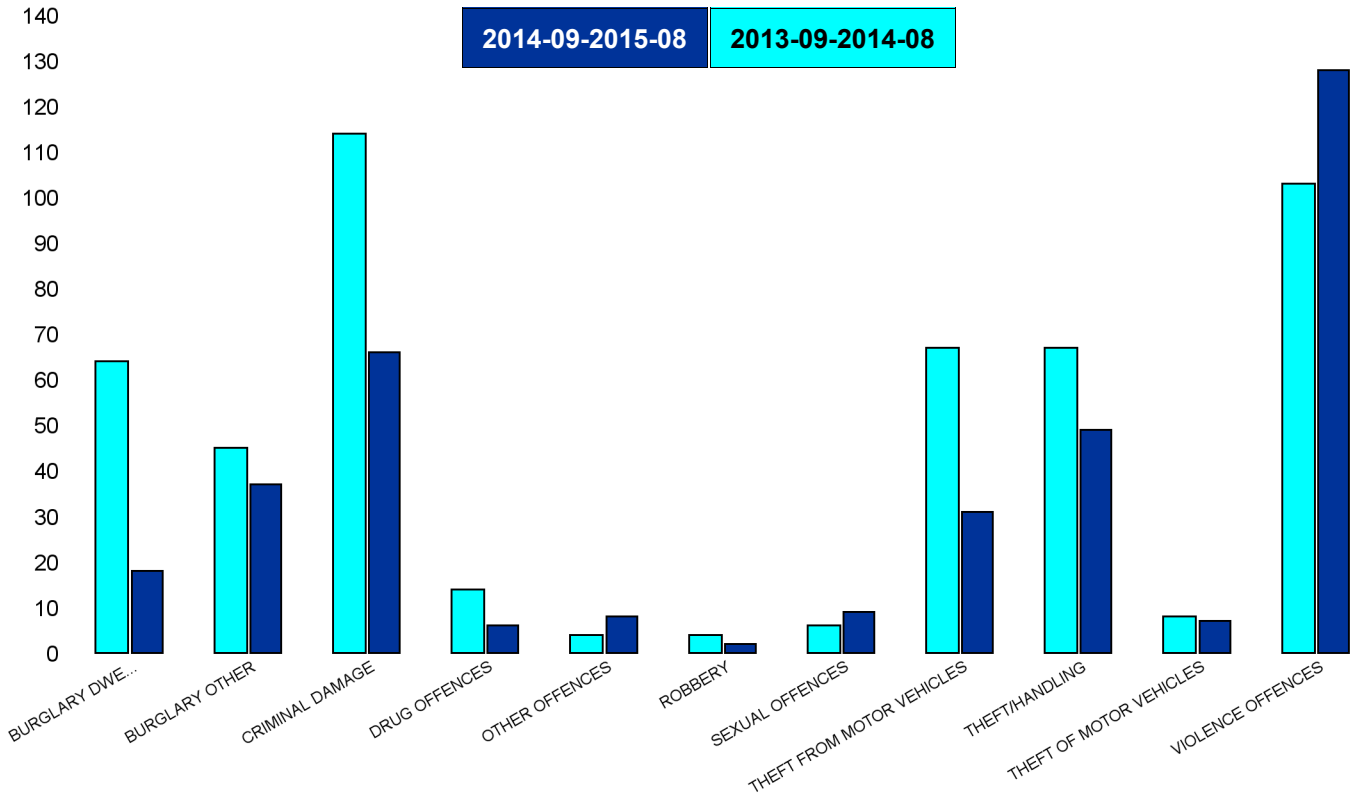
HO Group	Number of Crimes Latest 12 Months	Number of Crimes Previous 12 Months	+/- Crime	% Change	No of Resolved Outcome Crimes	Detection Rate (Past 12 Months)
BURGLARY DWELLING	8	23	-15	-65%	2	25%
BURGLARY OTHER	14	45	-31	-69%	3	21%
CRIMINAL DAMAGE	56	114	-58	-51%	6	11%
DRUG OFFENCES	8	8	0	0%	7	88%
OTHER OFFENCES	11	8	3	38%	5	45%
ROBBERY	4	3	1	33%	1	25%
SEXUAL OFFENCES	8	8	0	0%	1	13%
THEFT FROM MOTOR VEHICLES	16	29	-13	-45%	1	6%
THEFT/HANDLING	59	78	-19	-24%	9	15%
THEFT OF MOTOR VEHICLES	3	18	-15	-83%	0	0%
VIOLENCE OFFENCES	80	101	-21	-21%	19	24%
<b>Sum:</b>	<b>267</b>	<b>435</b>	<b>-168</b>	<b>-39%</b>	<b>54</b>	<b>20%</b>



## A6 Towns Forum Report 2013-09 to 2015-08

### K012 Rothwell - Crime

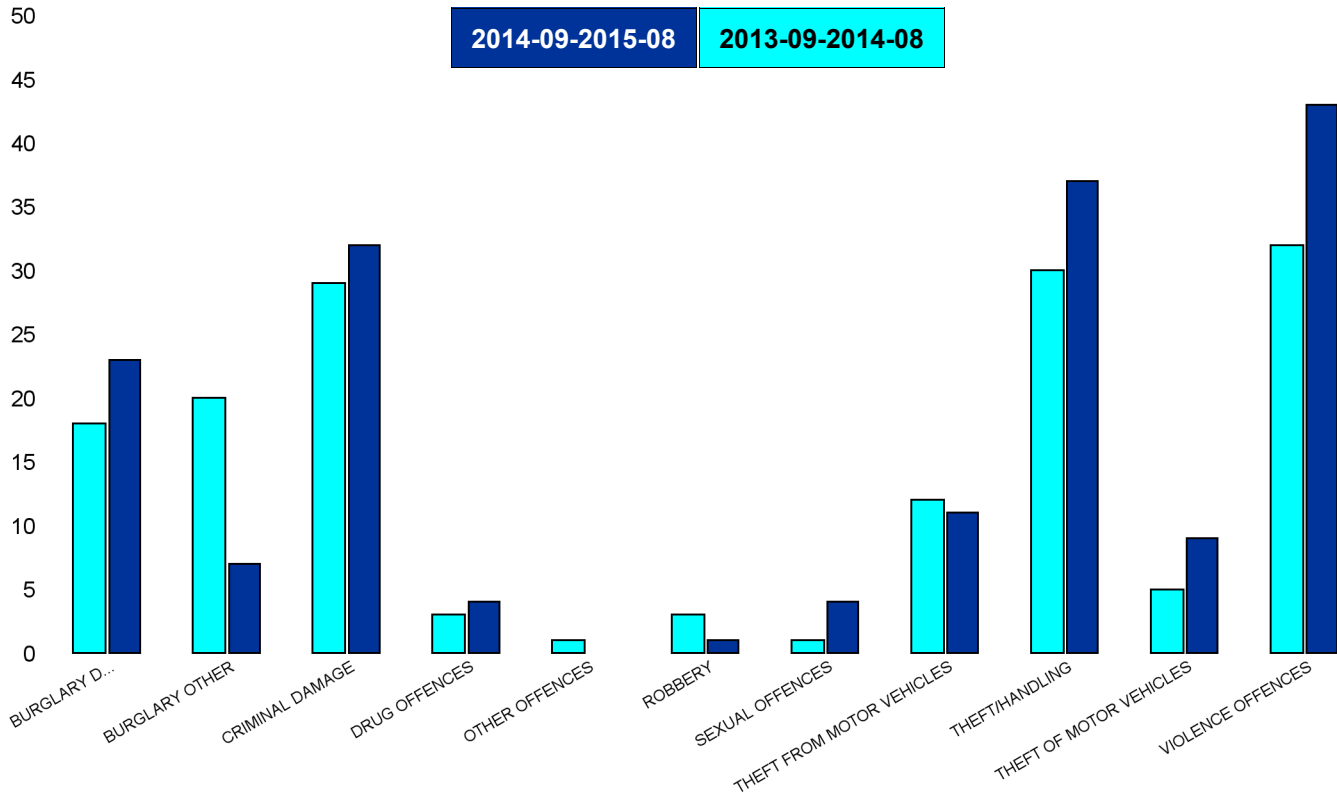
HO Group	No of Crimes Latest 12 Months	No of Crimes Previous 12 Months	+/- Crime	% Change	No of Resolved Outcome Crimes	Detection Rate (Past 12 Months)
BURGLARY DWELLING	18	64	-46	-72%	3	17%
BURGLARY OTHER	37	45	-8	-18%	3	8%
CRIMINAL DAMAGE	66	114	-48	-42%	10	15%
DRUG OFFENCES	6	14	-8	-57%	7	117%
OTHER OFFENCES	8	4	4	100%	6	75%
ROBBERY	2	4	-2	-50%	0	0%
SEXUAL OFFENCES	9	6	3	50%	2	22%
THEFT FROM MOTOR VEHICLES	31	67	-36	-54%	0	0%
THEFT/HANDLING	49	67	-18	-27%	15	31%
THEFT OF MOTOR VEHICLES	7	8	-1	-13%	3	43%
VIOLENCE OFFENCES	128	103	25	24%	33	26%
<b>Sum:</b>	<b>361</b>	<b>496</b>	<b>-135</b>	<b>-27%</b>	<b>82</b>	<b>23%</b>



## A6 Towns Forum Report 2013-09 to 2015-08

### K003 Barton - Crime

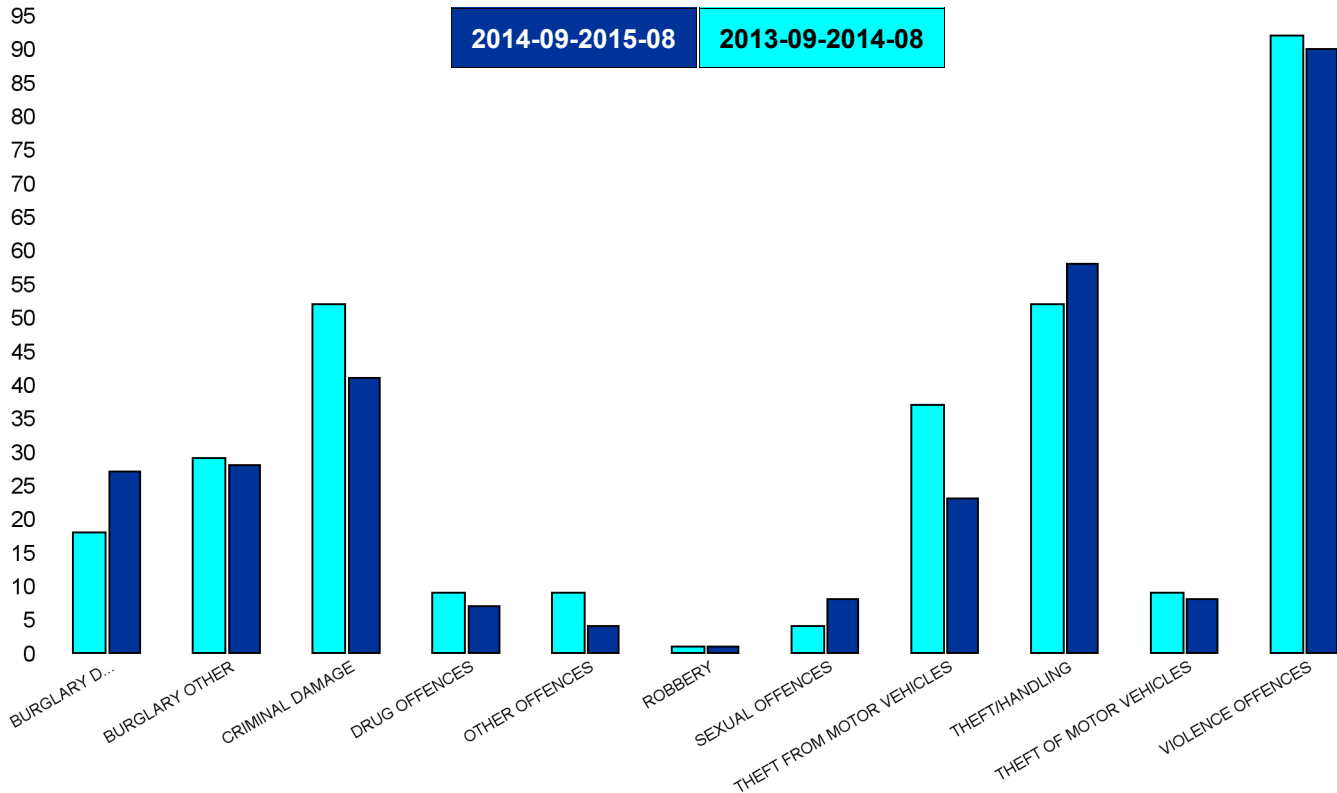
HO Group	No of Crimes Latest 12 Months	No of Crimes Previous 12 Months	+/- Crime	% Change	No of Resolved Outcome Crimes	Detection Rate (Past 12 Months)
BURGLARY DWELLING	23	18	5	28%	0	0%
BURGLARY OTHER	7	20	-13	-65%	0	0%
CRIMINAL DAMAGE	32	29	3	10%	2	6%
DRUG OFFENCES	4	3	1	33%	3	75%
OTHER OFFENCES	0	1	-1	-100%	0	0%
ROBBERY	1	3	-2	-67%	0	0%
SEXUAL OFFENCES	4	1	3	300%	0	0%
THEFT FROM MOTOR VEHICLES	11	12	-1	-8%	0	0%
THEFT/HANDLING	37	30	7	23%	6	16%
THEFT OF MOTOR VEHICLES	9	5	4	80%	1	11%
VIOLENCE OFFENCES	43	32	11	34%	15	35%
<b>Sum:</b>	<b>171</b>	<b>154</b>	<b>17</b>	<b>11%</b>	<b>27</b>	<b>16%</b>



## A6 Towns Forum Report 2013-09 to 2015-08

### K005 Burton Latimer - Crime

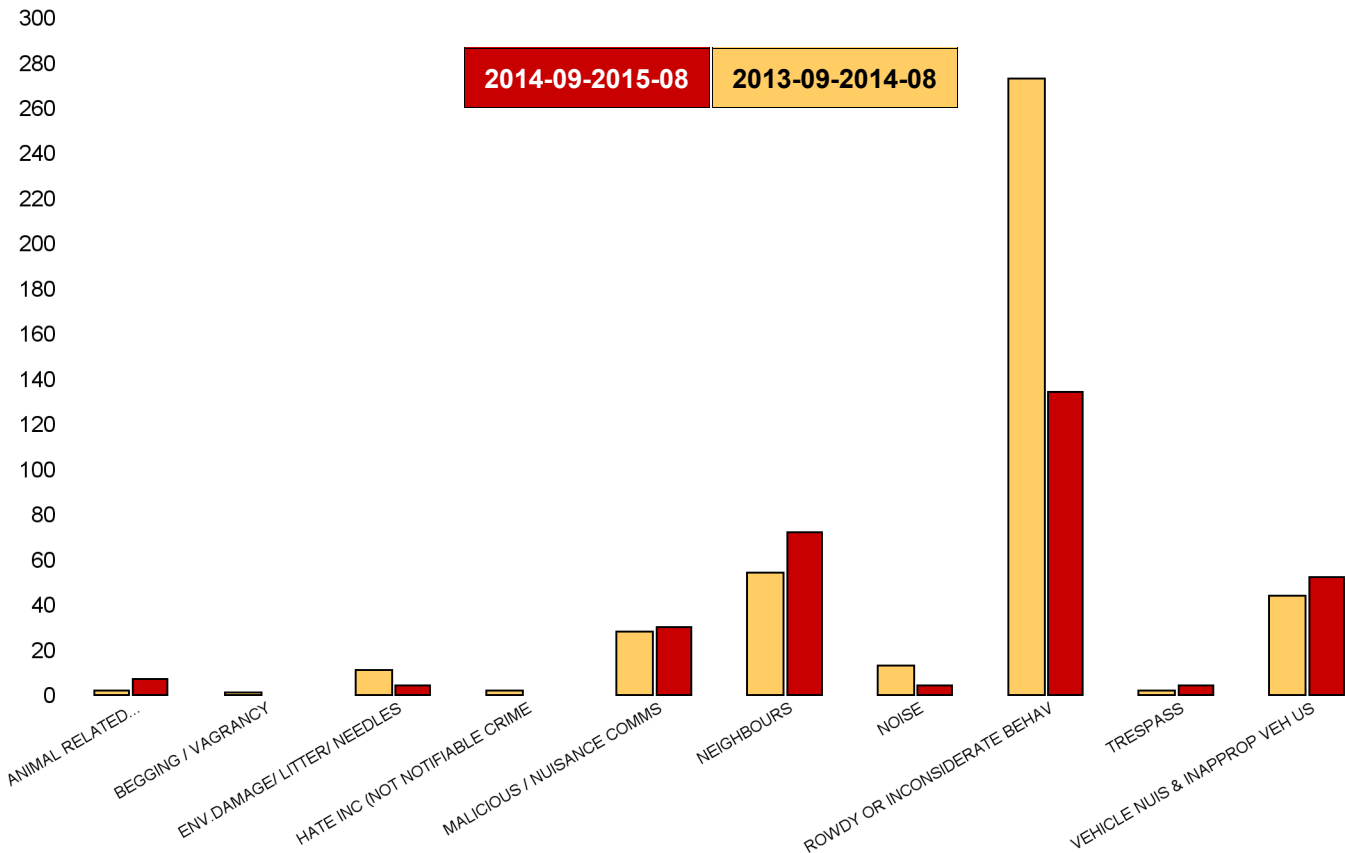
HO Group	No of Crimes Latest 12 Months	No of Crimes Previous 12 Months	+/- Crime	% Change	No of Resolved Outcome Crimes	Detection Rate (Past 12 Months)
BURGLARY DWELLING	27	18	9	50%	1	4%
BURGLARY OTHER	28	29	-1	-3%	0	0%
CRIMINAL DAMAGE	41	52	-11	-21%	5	12%
DRUG OFFENCES	7	9	-2	-22%	6	86%
OTHER OFFENCES	4	9	-5	-56%	2	50%
ROBBERY	1	1	0	0%	0	0%
SEXUAL OFFENCES	8	4	4	100%	0	0%
THEFT FROM MOTOR VEHICLES	23	37	-14	-38%	0	0%
THEFT/HANDLING	58	52	6	12%	12	21%
THEFT OF MOTOR VEHICLES	8	9	-1	-11%	0	0%
VIOLENCE OFFENCES	90	92	-2	-2%	30	33%
<b>Sum:</b>	<b>295</b>	<b>312</b>	<b>-17</b>	<b>-5%</b>	<b>56</b>	<b>19%</b>



## A6 Towns Forum Report 2013-09 to 2015-08

### K006 & K007 Desborough ASB

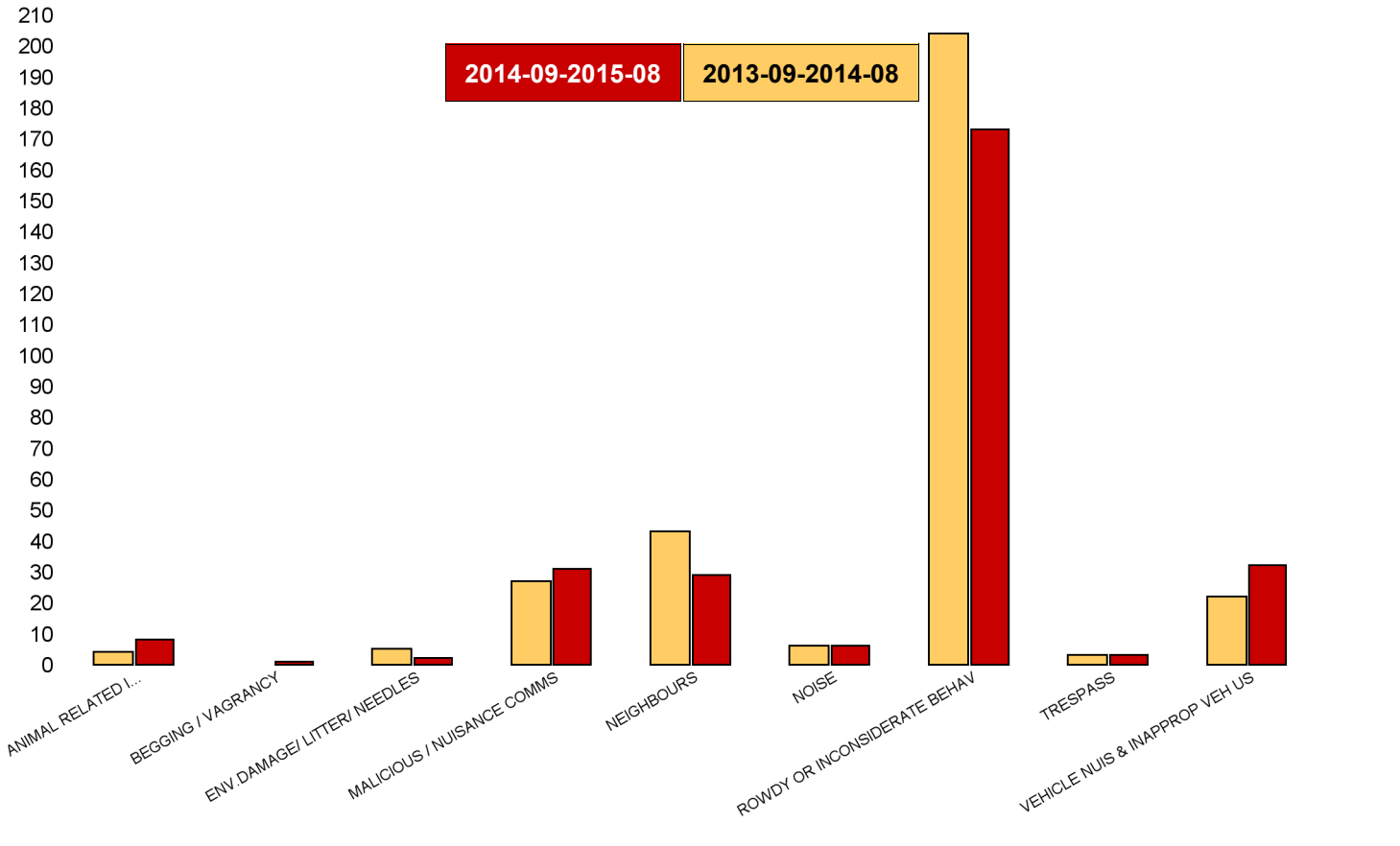
NSIR Closing Cat. 1 Desc	Number of Incidents Latest 12 Months	No of Incidents previous 12 Months	+/- Incidents	% Change Incidents
ANIMAL RELATED INC ANTI-SOCIAL	7	2	5	250%
BEGGING / VAGRANCY	0	1	-1	-100%
ENV.DAMAGE/ LITTER/ NEEDLES	4	11	-7	-64%
HATE INC (NOT NOTIFIABLE CRIME	0	2	-2	-100%
MALICIOUS / NUISANCE COMMS	30	28	2	7%
NEIGHBOURS	72	54	18	33%
NOISE	4	13	-9	-69%
ROWDY OR INCONSIDERATE BEHAV	134	273	-139	-51%
TRESPASS	4	2	2	100%
VEHICLE NUIS & INAPPROP VEH US	52	44	8	18%
<b>Sum:</b>	<b>307</b>	<b>430</b>	<b>-123</b>	<b>-29%</b>



## A6 Towns Forum Report 2013-09 to 2015-08

### K012 Rothwell ASB

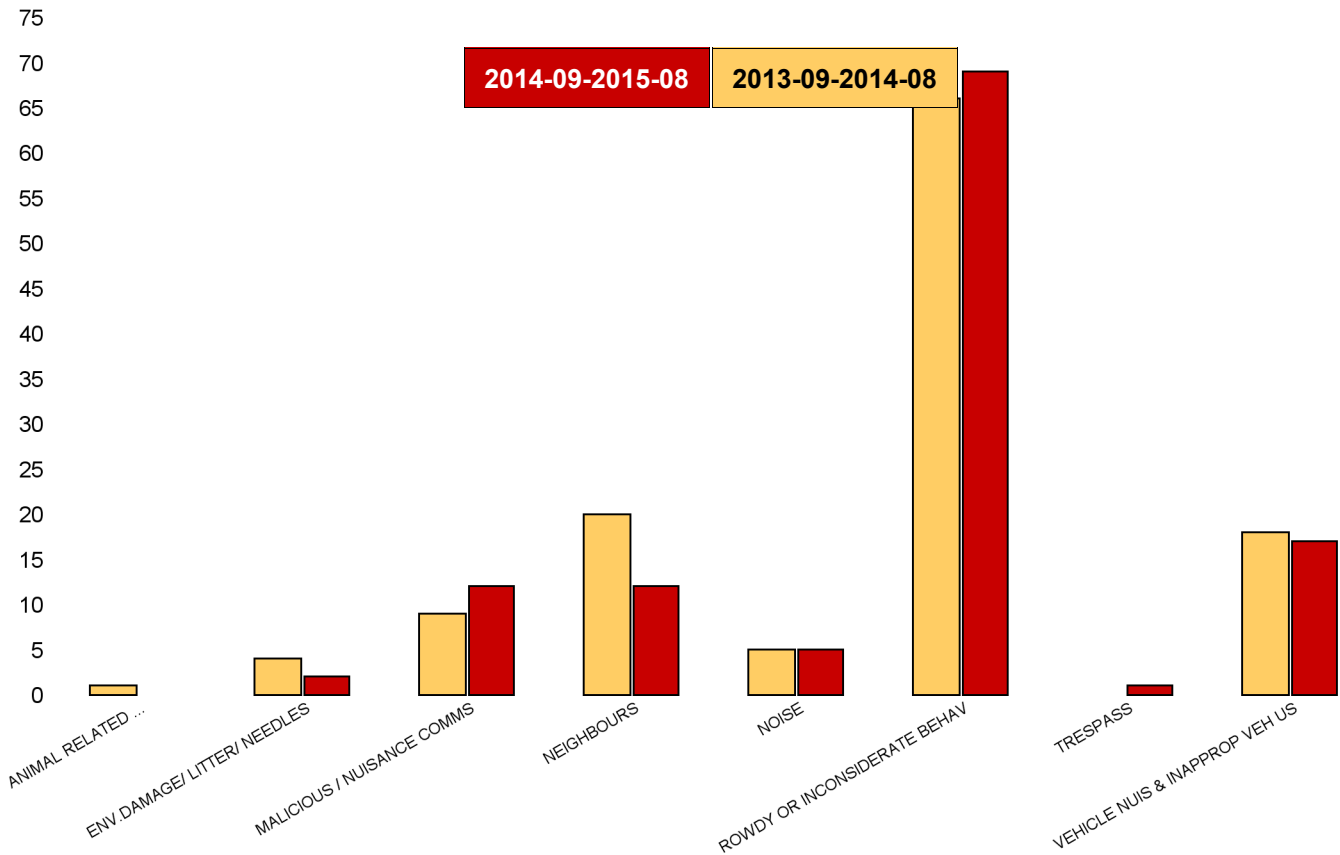
NSIR Closing Cat. 1 Desc	Number of Incidents Latest 12 Months	No of Incidents previous 12 Months	+/- Incidents	% Change Incidents
ANIMAL RELATED INC ANTI-SOCIAL	8	4	4	100%
BEGGING / VAGRANCY	1	0	1	0%
ENV.DAMAGE/ LITTER/ NEEDLES	2	5	-3	-60%
MALICIOUS / NUISANCE COMMS	31	27	4	15%
NEIGHBOURS	29	43	-14	-33%
NOISE	6	6	0	0%
ROWDY OR INCONSIDERATE BEHAV	173	204	-31	-15%
TRESPASS	3	3	0	0%
VEHICLE NUIS & INAPPROP VEH US	32	22	10	45%
<b>Sum:</b>	<b>285</b>	<b>314</b>	<b>-29</b>	<b>-9%</b>



## A6 Towns Forum Report 2013-09 to 2015-08

### K003 Barton ASB

NSIR Closing Cat. 1 Desc	No of Incidents Lastest 12 months	No of Incidents Previous 12 months	+/- Incidents	% Change Incidents
ANIMAL RELATED INC ANTI-SOCIAL	0	1	-1	-100%
ENV.DAMAGE/ LITTER/ NEEDLES	2	4	-2	-50%
MALICIOUS / NUISANCE COMMS	12	9	3	33%
NEIGHBOURS	12	20	-8	-40%
NOISE	5	5	0	0%
ROWDY OR INCONSIDERATE BEHAV	69	66	3	5%
TRESPASS	1	0	1	0%
VEHICLE NUIS & INAPPROP VEH US	17	18	-1	-6%
<b>Sum:</b>	<b>118</b>	<b>123</b>	<b>-5</b>	<b>-4%</b>



## A6 Towns Forum Report 2013-09 to 2015-08

### K005 Latimer ASB

NSIR Closing Cat. 1 Desc	Number of Incidents Latest 12	No of Incidents previous 12 Months	+/- Incidents	% Change Incidents
ANIMAL RELATED INC ANTI-SOCIAL	9	6	3	50%
ENV.DAMAGE/ LITTER/ NEEDLES	1	2	-1	-50%
MALICIOUS / NUISANCE COMMS	32	35	-3	-9%
NEIGHBOURS	54	55	-1	-2%
NOISE	15	11	4	36%
ROWDY OR INCONSIDERATE BEHAV	106	164	-58	-35%
TRESPASS	2	3	-1	-33%
VEHICLE NUIS & INAPPROP VEH US	33	20	13	65%
<b>Sum:</b>	<b>252</b>	<b>296</b>	<b>-44</b>	<b>-15%</b>

