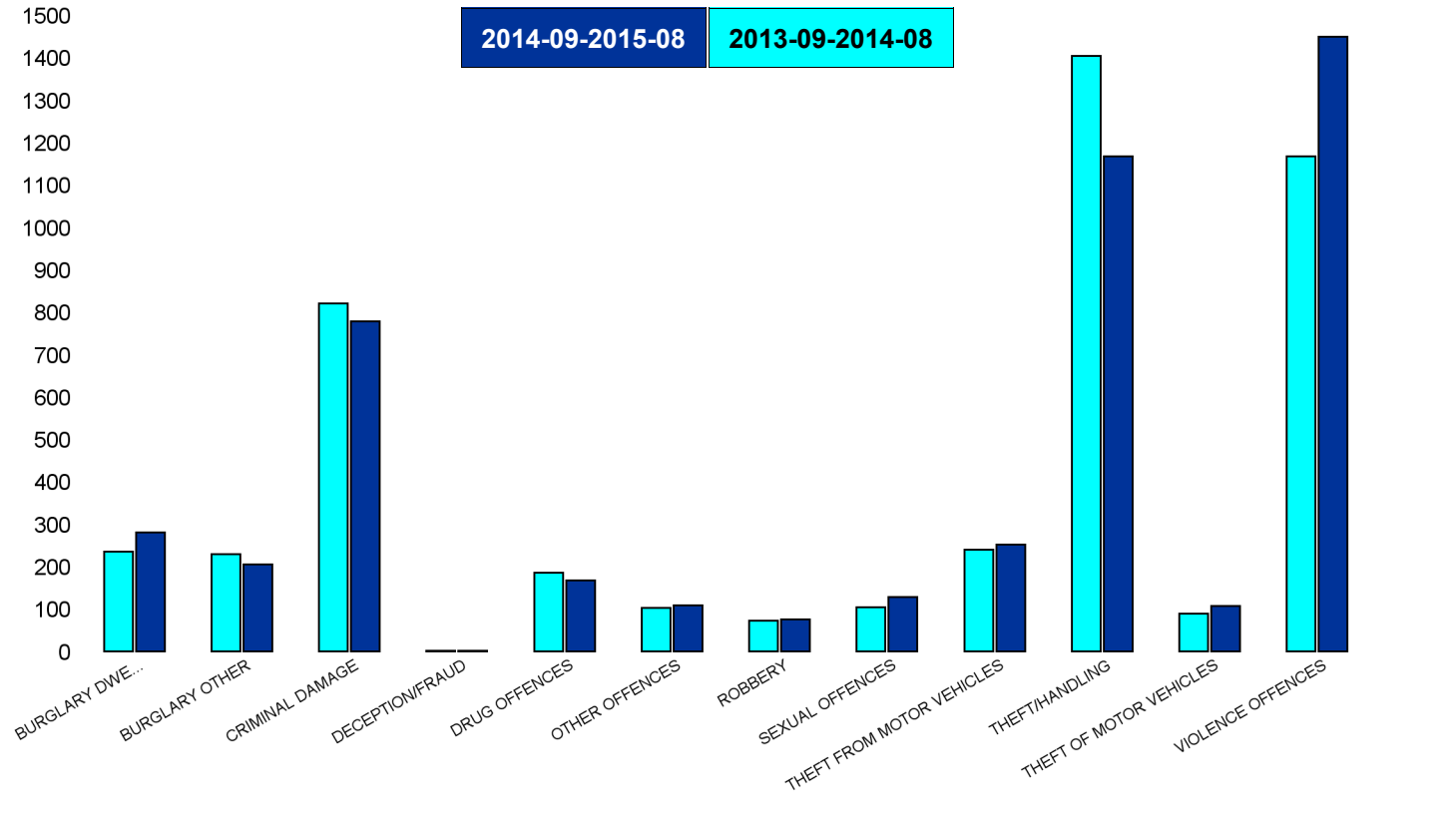


Kettering Town Forum Report 2013-09 to 2015-08

Kettering Town SCT - Crime

HO Group	No of Crimes Latest 12 Months	No of Crimes Previous 12 Months	+/- Crime	% Change	No of Resolved Outcome Crimes	Detection Rate (Past 12 Months)
BURGLARY DWELLING	281	235	46	20%	21	7%
BURGLARY OTHER	205	229	-24	-10%	18	9%
CRIMINAL DAMAGE	779	821	-42	-5%	145	19%
DECEPTION/FRAUD	2	1	1	100%	1	50%
DRUG OFFENCES	168	186	-18	-10%	150	89%
OTHER OFFENCES	109	103	6	6%	55	50%
ROBBERY	75	72	3	4%	10	13%
SEXUAL OFFENCES	129	104	25	24%	25	19%
THEFT FROM MOTOR VEHICLES	252	240	12	5%	2	1%
THEFT/HANDLING	1167	1404	-237	-17%	378	32%
THEFT OF MOTOR VEHICLES	107	89	18	20%	27	25%
VIOLENCE OFFENCES	1450	1168	282	24%	467	32%
Sum:	4724	4652	72	2%	1299	27%

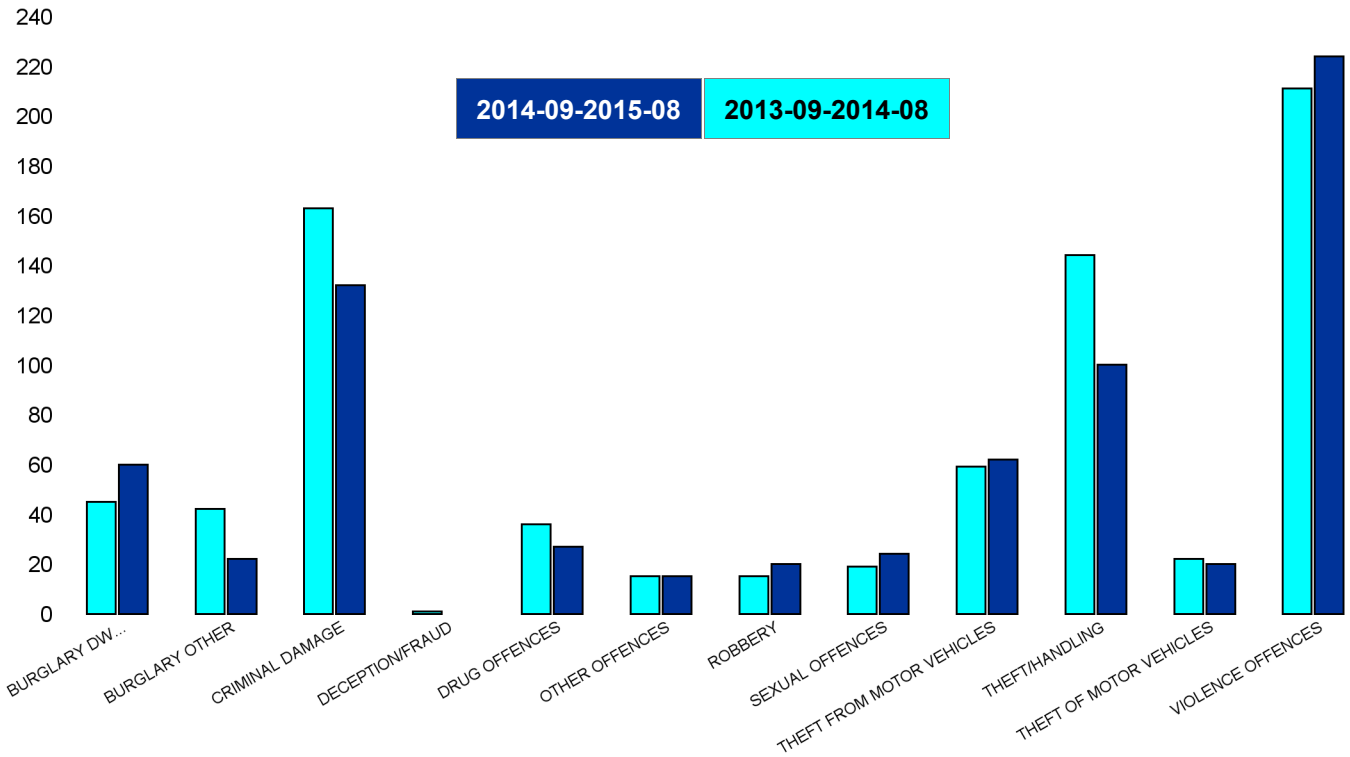


Kettering Town Forum Report 2013-09 to 2015-08

All Saints

HO Group	No of Crimes Latest 12 Months	No of Crimes Previous 12 Months	+/- Crime	% Change
BURGLARY DWELLING	60	45	15	33%
BURGLARY OTHER	22	42	-20	-48%
CRIMINAL DAMAGE	132	163	-31	-19%
DECEPTION/FRAUD	0	1	-1	-100%
DRUG OFFENCES	27	36	-9	-25%
OTHER OFFENCES	15	15	0	0%
ROBBERY	20	15	5	33%
SEXUAL OFFENCES	24	19	5	26%
THEFT FROM MOTOR VEHICLES	62	59	3	5%
THEFT/HANDLING	100	144	-44	-31%
THEFT OF MOTOR VEHICLES	20	22	-2	-9%
VIOLENCE OFFENCES	224	211	13	6%
Sum:	706	772	-66	-9%

No of Resolved Outcome Crimes	Detection Rate (Past 12 Months)
2	3%
2	9%
27	20%
0	0%
27	100%
10	67%
3	15%
8	33%
0	0%
24	24%
5	25%
61	27%
169	24%

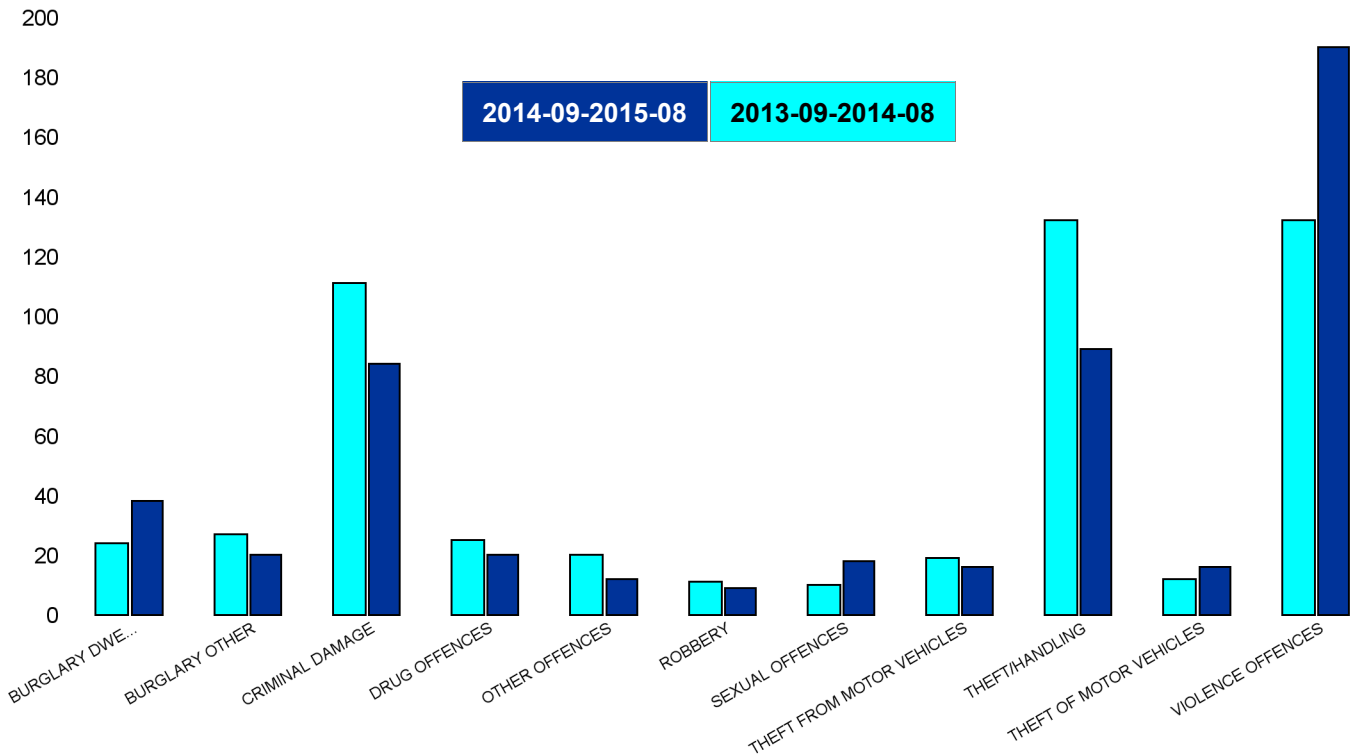


Kettering Town Forum Report 2013-09 to 2015-08

Avondale Grange

HO Group	No of Crimes Latest 12 Months	No of Crimes Previous 12 Months	+/- Crime	% Change
BURGLARY DWELLING	38	24	14	58%
BURGLARY OTHER	20	27	-7	-26%
CRIMINAL DAMAGE	84	111	-27	-24%
DRUG OFFENCES	20	25	-5	-20%
OTHER OFFENCES	12	20	-8	-40%
ROBBERY	9	11	-2	-18%
SEXUAL OFFENCES	18	10	8	80%
THEFT FROM MOTOR VEHICLES	16	19	-3	-16%
THEFT/HANDLING	89	132	-43	-33%
THEFT OF MOTOR VEHICLES	16	12	4	33%
VIOLENCE OFFENCES	190	132	58	44%
Sum:	512	523	-11	-2%

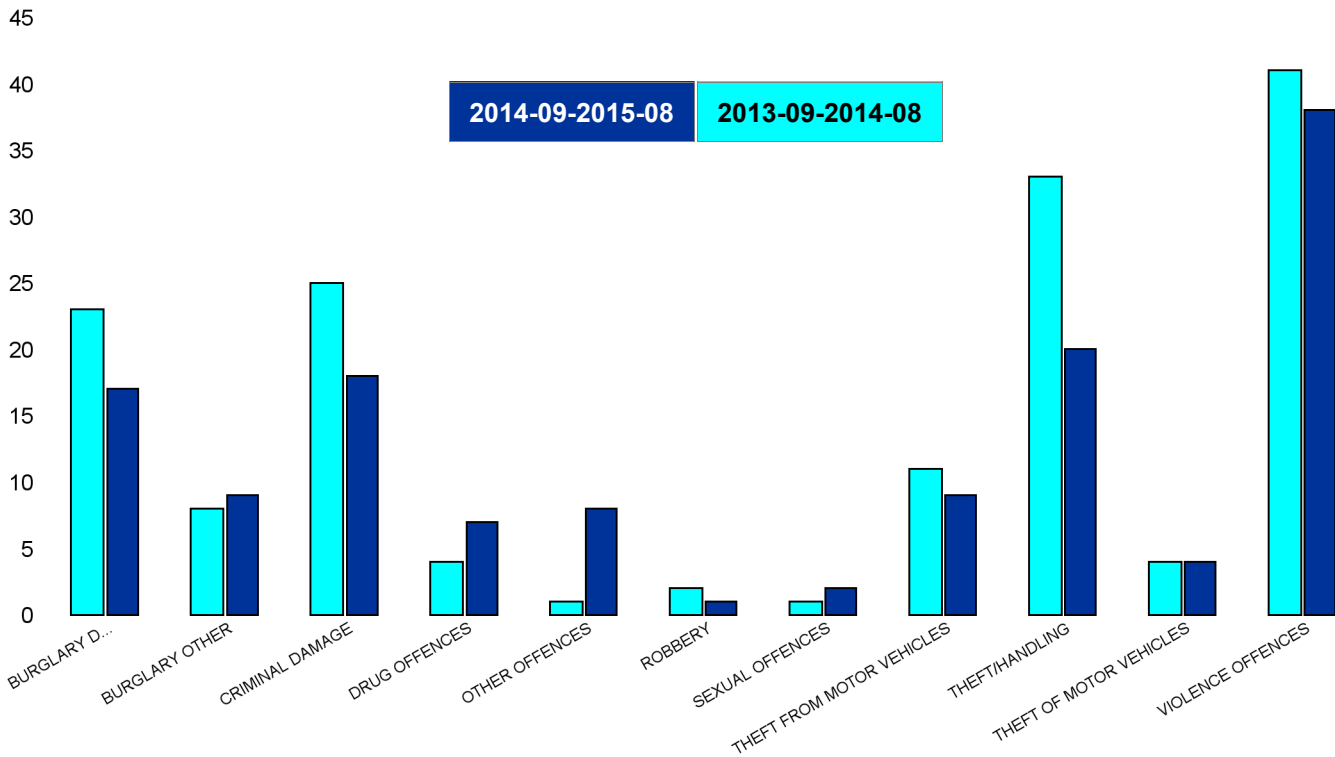
No of Resolved Outcome Crimes	Detection Rate (Past 12 Months)
2	5%
3	15%
17	20%
18	90%
2	17%
2	22%
3	17%
0	0%
26	29%
2	13%
62	33%
137	27%



Kettering Town Forum Report 2013-09 to 2015-08

Brambleside

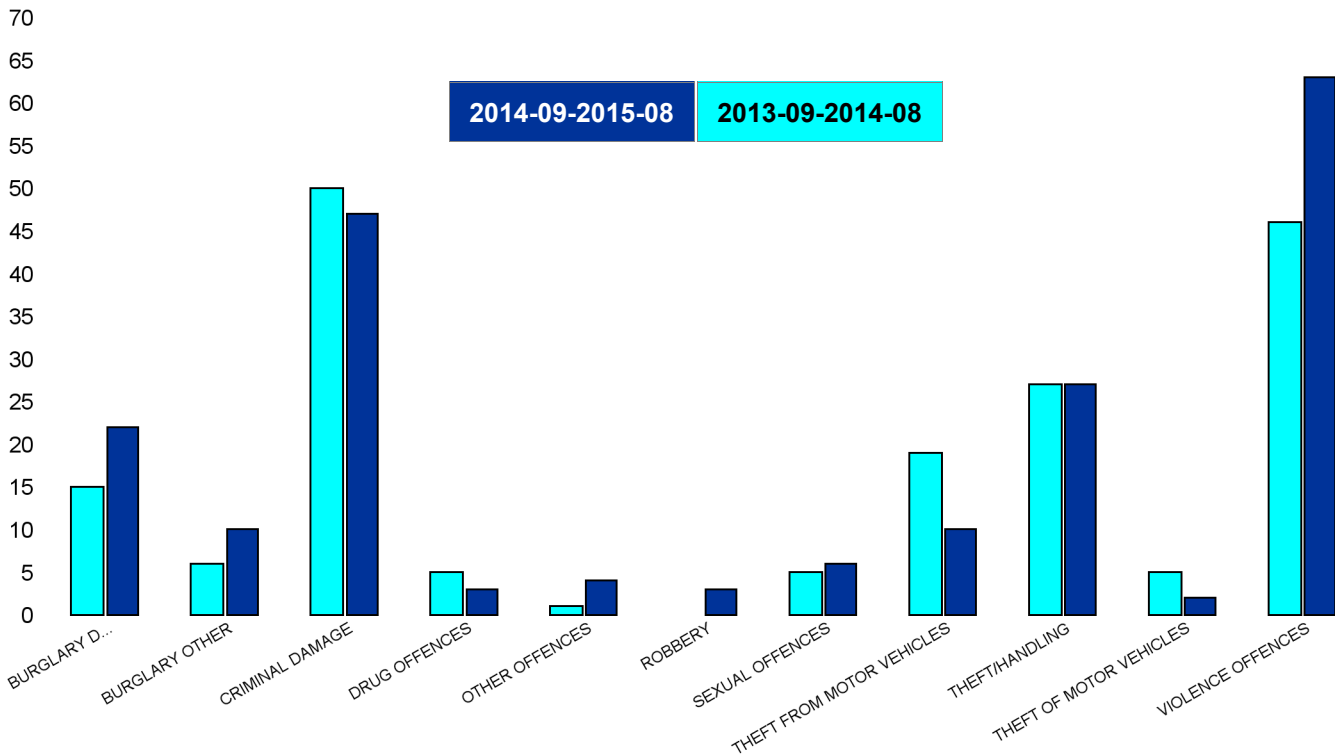
HO Group	No of Crimes Latest 12 Months	No of Crimes Previous 12 Months	+/- Crime	% Change	No of Resolved Outcome Crimes	Detection Rate (Past 12 Months)
BURGLARY DWELLING	17	23	-6	-26%	0	0%
BURGLARY OTHER	9	8	1	13%	0	0%
CRIMINAL DAMAGE	18	25	-7	-28%	3	17%
DRUG OFFENCES	7	4	3	75%	6	86%
OTHER OFFENCES	8	1	7	700%	6	75%
ROBBERY	1	2	-1	-50%	0	0%
SEXUAL OFFENCES	2	1	1	100%	1	50%
THEFT FROM MOTOR VEHICLES	9	11	-2	-18%	0	0%
THEFT/HANDLING	20	33	-13	-39%	1	5%
THEFT OF MOTOR VEHICLES	4	4	0	0%	3	75%
VIOLENCE OFFENCES	38	41	-3	-7%	10	26%
Sum:	133	153	-20	-13%	30	23%



Kettering Town Forum Report 2013-09 to 2015-08

Isle Lodge

HO Group	No of Crimes Latest 12 Months	No of Crimes Previous 12 Months	+/- Crime	% Change	No of Resolved Outcome Crimes	Detection Rate (Past 12 Months)
BURGLARY DWELLING	22	15	7	47%	2	9%
BURGLARY OTHER	10	6	4	67%	0	0%
CRIMINAL DAMAGE	47	50	-3	-6%	5	11%
DRUG OFFENCES	3	5	-2	-40%	3	100%
OTHER OFFENCES	4	1	3	300%	2	50%
ROBBERY	3	0	3	0%	0	0%
SEXUAL OFFENCES	6	5	1	20%	1	17%
THEFT FROM MOTOR VEHICLES	10	19	-9	-47%	0	0%
THEFT/HANDLING	27	27	0	0%	3	11%
THEFT OF MOTOR VEHICLES	2	5	-3	-60%	0	0%
VIOLENCE OFFENCES	63	46	17	37%	18	29%
Sum:	197	179	18	10%	34	17%

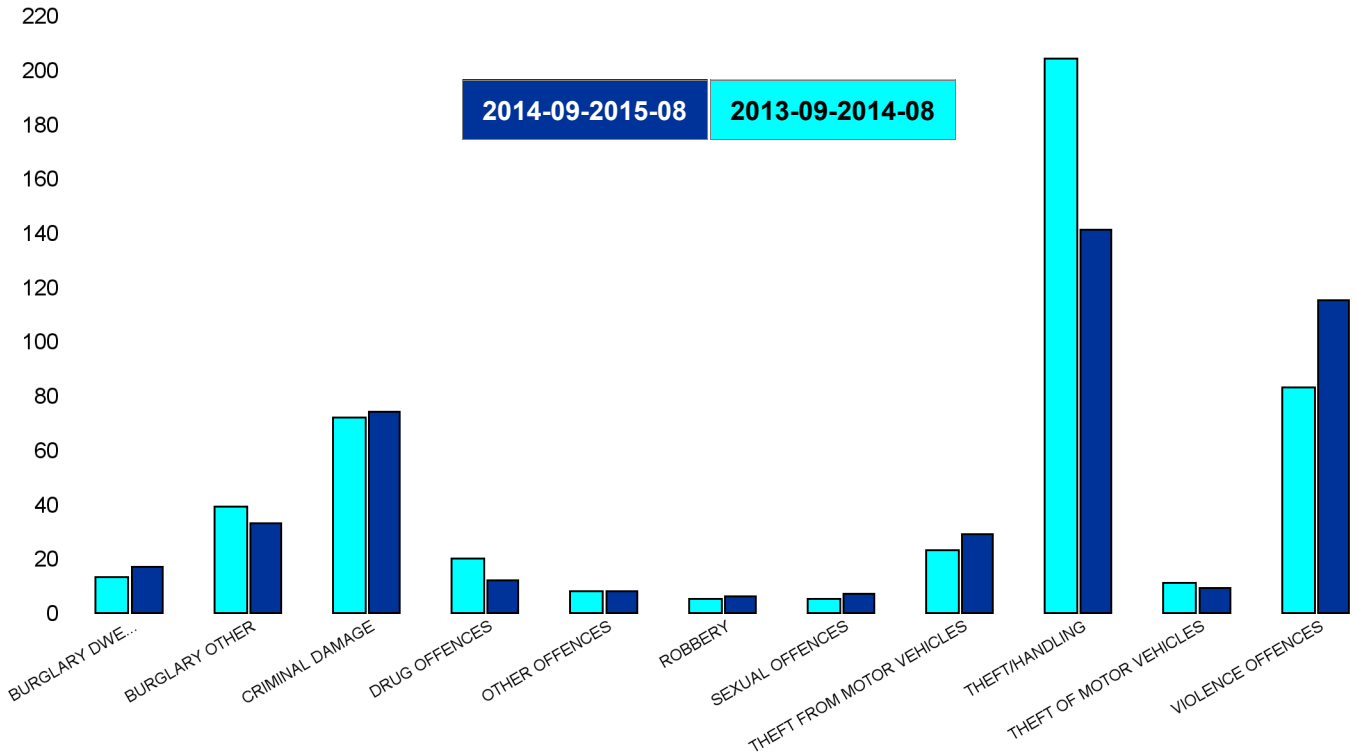


Kettering Town Forum Report 2013-09 to 2015-08

Northfield

HO Group	No of Crimes Latest 12 Months	No of Crimes Previous 12 Months	+/- Crime	% Change
BURGLARY DWELLING	17	13	4	31%
BURGLARY OTHER	33	39	-6	-15%
CRIMINAL DAMAGE	74	72	2	3%
DRUG OFFENCES	12	20	-8	-40%
OTHER OFFENCES	8	8	0	0%
ROBBERY	6	5	1	20%
SEXUAL OFFENCES	7	5	2	40%
THEFT FROM MOTOR VEHICLES	29	23	6	26%
THEFT/HANDLING	141	204	-63	-31%
THEFT OF MOTOR VEHICLES	9	11	-2	-18%
VIOLENCE OFFENCES	115	83	32	39%
Sum:	451	483	-32	-7%

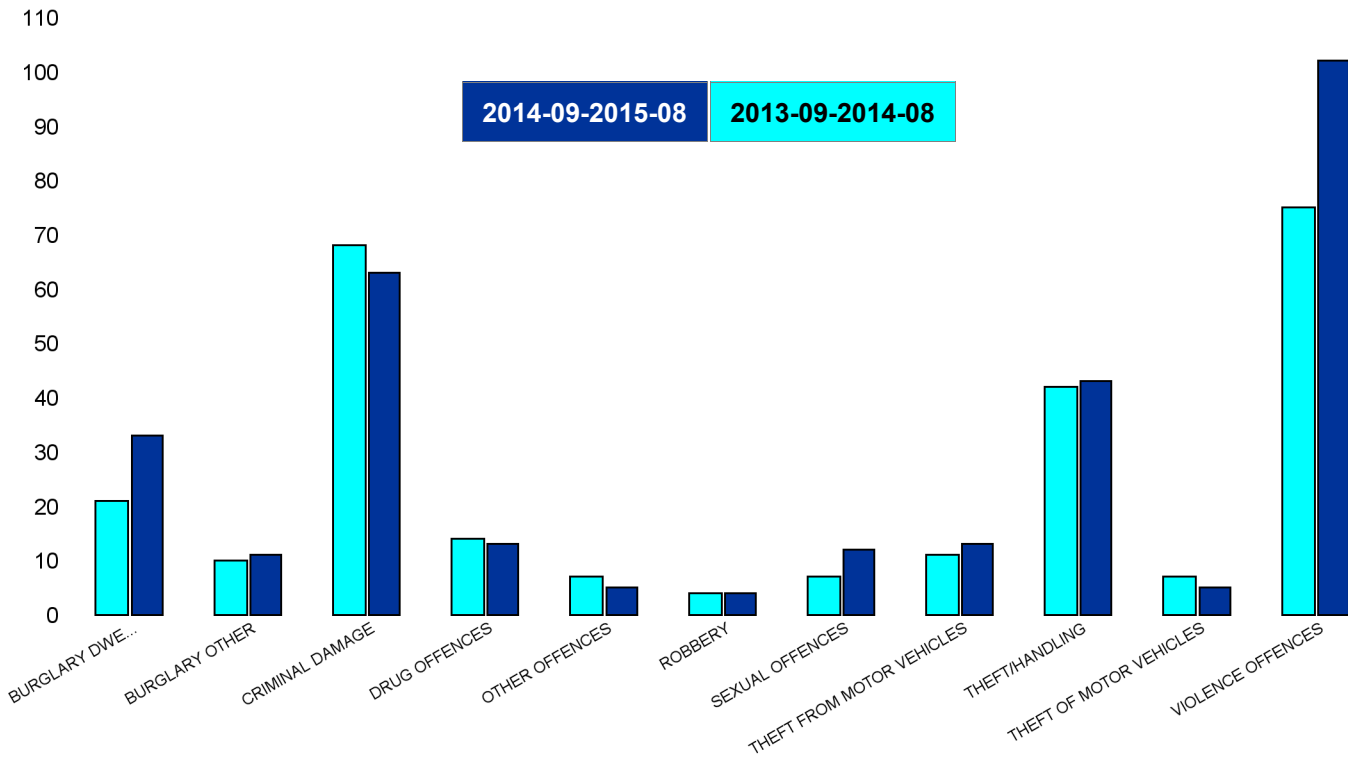
No of Resolved Outcome Crimes	Detection Rate (Past 12 Months)
1	6%
2	6%
15	20%
11	92%
3	38%
2	33%
1	14%
0	0%
42	30%
4	44%
31	27%
112	25%



Kettering Town Forum Report 2013-09 to 2015-08

Pipers Hill

HO Group	No of Crimes Latest 12 Months	No of Crimes Previous 12 Months	+/- Crime	% Change	No of Resolved Outcome Crimes	Detection Rate (Past 12 Months)
BURGLARY DWELLING	33	21	12	57%	3	9%
BURGLARY OTHER	11	10	1	10%	1	9%
CRIMINAL DAMAGE	63	68	-5	-7%	9	14%
DRUG OFFENCES	13	14	-1	-7%	9	69%
OTHER OFFENCES	5	7	-2	-29%	3	60%
ROBBERY	4	4	0	0%	1	25%
SEXUAL OFFENCES	12	7	5	71%	1	8%
THEFT FROM MOTOR VEHICLES	13	11	2	18%	0	0%
THEFT/HANDLING	43	42	1	2%	8	19%
THEFT OF MOTOR VEHICLES	5	7	-2	-29%	0	0%
VIOLENCE OFFENCES	102	75	27	36%	25	25%
Sum:	304	266	38	14%	60	20%

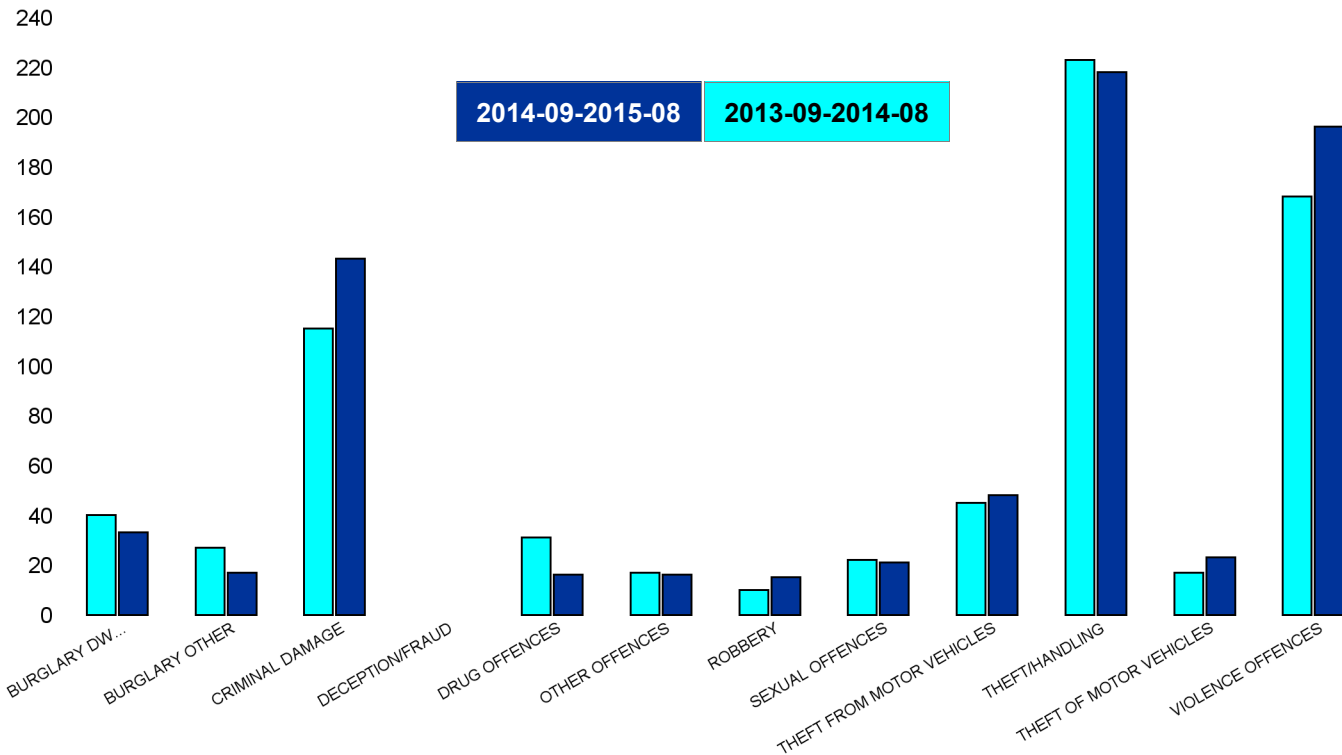


Kettering Town Forum Report 2013-09 to 2015-08

St Michaels and Wicksteed

HO Group	No of Crimes Latest 12 Months	No of Crimes Previous 12 Months	+/- Crime	% Change
BURGLARY DWELLING	33	40	-7	-18%
BURGLARY OTHER	17	27	-10	-37%
CRIMINAL DAMAGE	143	115	28	24%
DECEPTION/FRAUD	0	0	0	#DIV/0
DRUG OFFENCES	16	31	-15	-48%
OTHER OFFENCES	16	17	-1	-6%
ROBBERY	15	10	5	50%
SEXUAL OFFENCES	21	22	-1	-5%
THEFT FROM MOTOR VEHICLES	48	45	3	7%
THEFT/HANDLING	218	223	-5	-2%
THEFT OF MOTOR VEHICLES	23	17	6	35%
VIOLENCE OFFENCES	196	168	28	17%
Sum:	746	715	31	4%

No of Resolved Outcome Crimes	Detection Rate (Past 12 Months)
4	12%
3	18%
25	17%
0	0%
18	113%
5	31%
1	7%
3	14%
0	0%
72	33%
5	22%
65	33%
201	27%

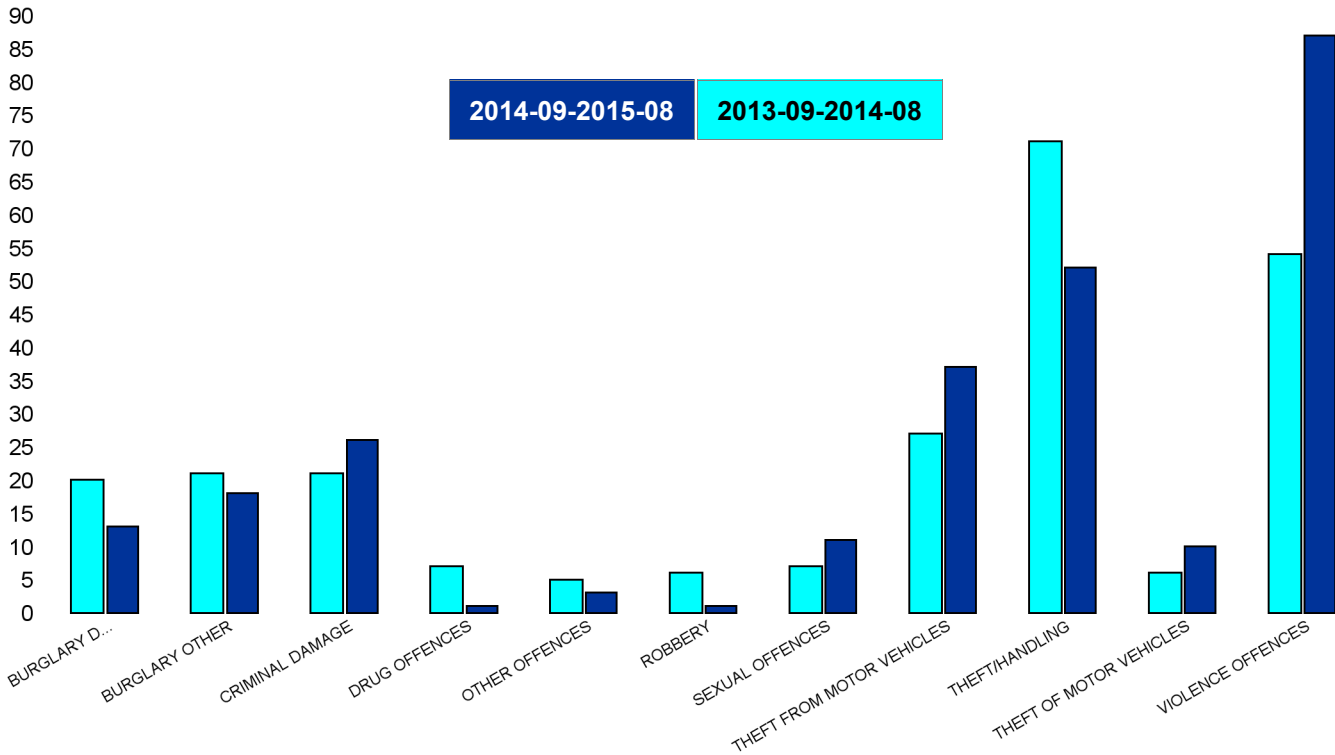


Kettering Town Forum Report 2013-09 to 2015-08

St Peters

HO Group	No of Crimes Latest 12 Months	No of Crimes Previous 12 Months	+/- Crime	% Change
BURGLARY DWELLING	13	20	-7	-35%
BURGLARY OTHER	18	21	-3	-14%
CRIMINAL DAMAGE	26	21	5	24%
DRUG OFFENCES	1	7	-6	-86%
OTHER OFFENCES	3	5	-2	-40%
ROBBERY	1	6	-5	-83%
SEXUAL OFFENCES	11	7	4	57%
THEFT FROM MOTOR VEHICLES	37	27	10	37%
THEFT/HANDLING	52	71	-19	-27%
THEFT OF MOTOR VEHICLES	10	6	4	67%
VIOLENCE OFFENCES	87	54	33	61%
Sum:	259	245	14	6%

No of Resolved Outcome Crimes	Detection Rate (Past 12 Months)
1	8%
1	6%
2	8%
1	100%
2	67%
0	0%
3	27%
0	0%
11	21%
1	10%
25	29%
47	18%

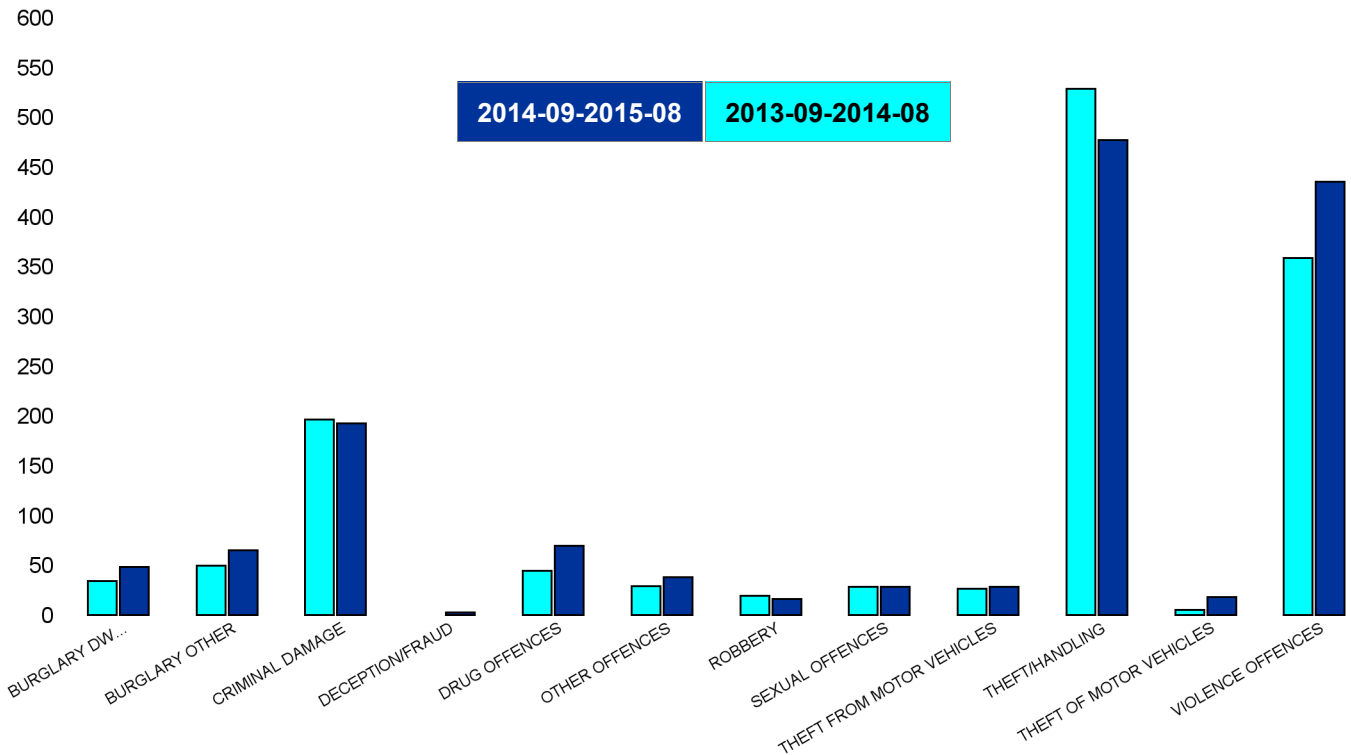


Kettering Town Forum Report 2013-09 to 2015-08

William Knibb

HO Group	No of Crimes Latest 12 Months	No of Crimes Previous 12 Months	+/- Crime	% Change
BURGLARY DWELLING	48	34	14	41%
BURGLARY OTHER	65	49	16	33%
CRIMINAL DAMAGE	192	196	-4	-2%
DECEPTION/FRAUD	2	0	2	0%
DRUG OFFENCES	69	44	25	57%
OTHER OFFENCES	38	29	9	31%
ROBBERY	16	19	-3	-16%
SEXUAL OFFENCES	28	28	0	0%
THEFT FROM MOTOR VEHICLES	28	26	2	8%
THEFT/HANDLING	477	528	-51	-10%
THEFT OF MOTOR VEHICLES	18	5	13	260%
VIOLENCE OFFENCES	435	358	77	22%
Sum:	1416	1316	100	8%

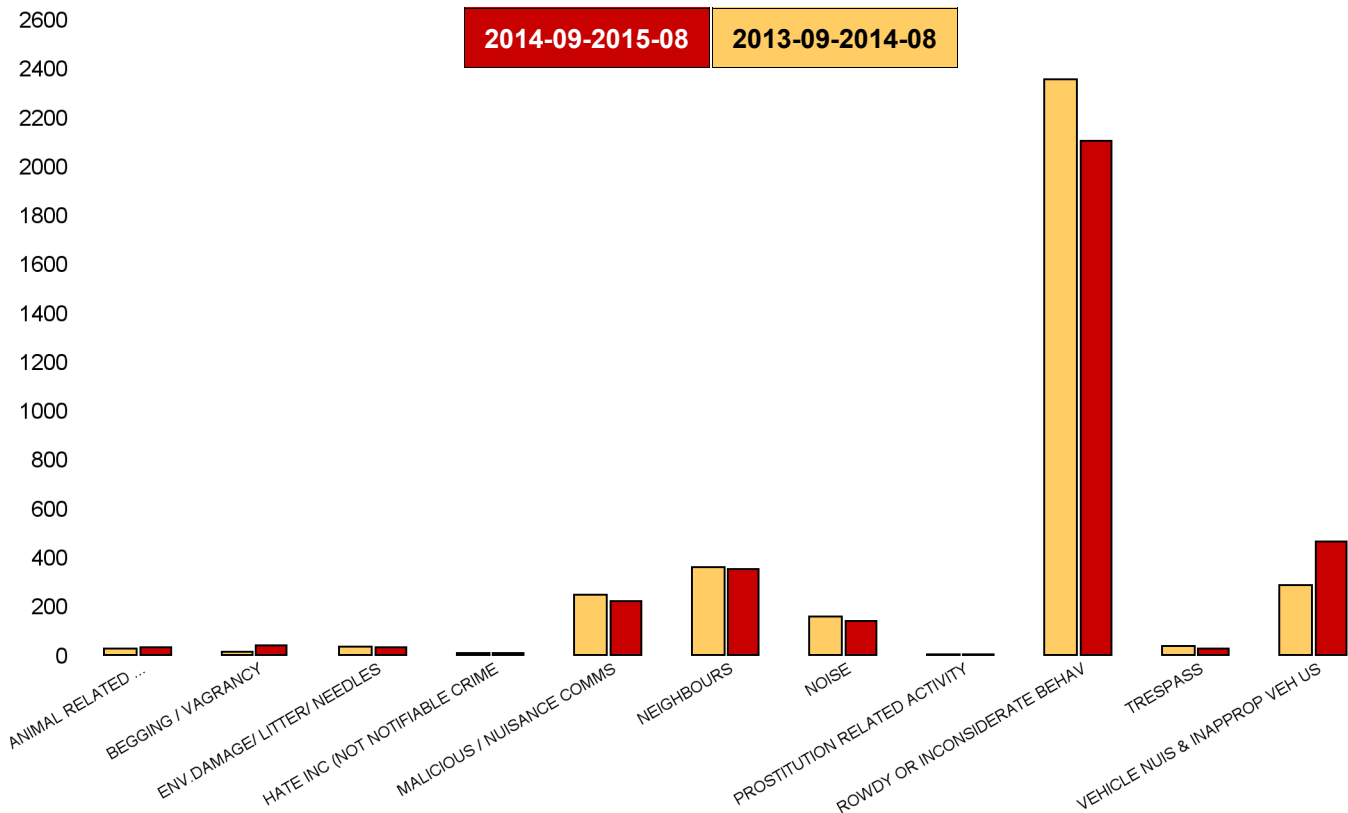
No of Resolved Outcome Crimes	Detection Rate (Past 12 Months)
6	13%
6	9%
42	22%
1	50%
57	83%
22	58%
1	6%
4	14%
2	7%
191	40%
7	39%
170	39%
509	36%



Kettering Town Forum Report 2013-09 to 2015-08

Kettering Town SCT - ASB

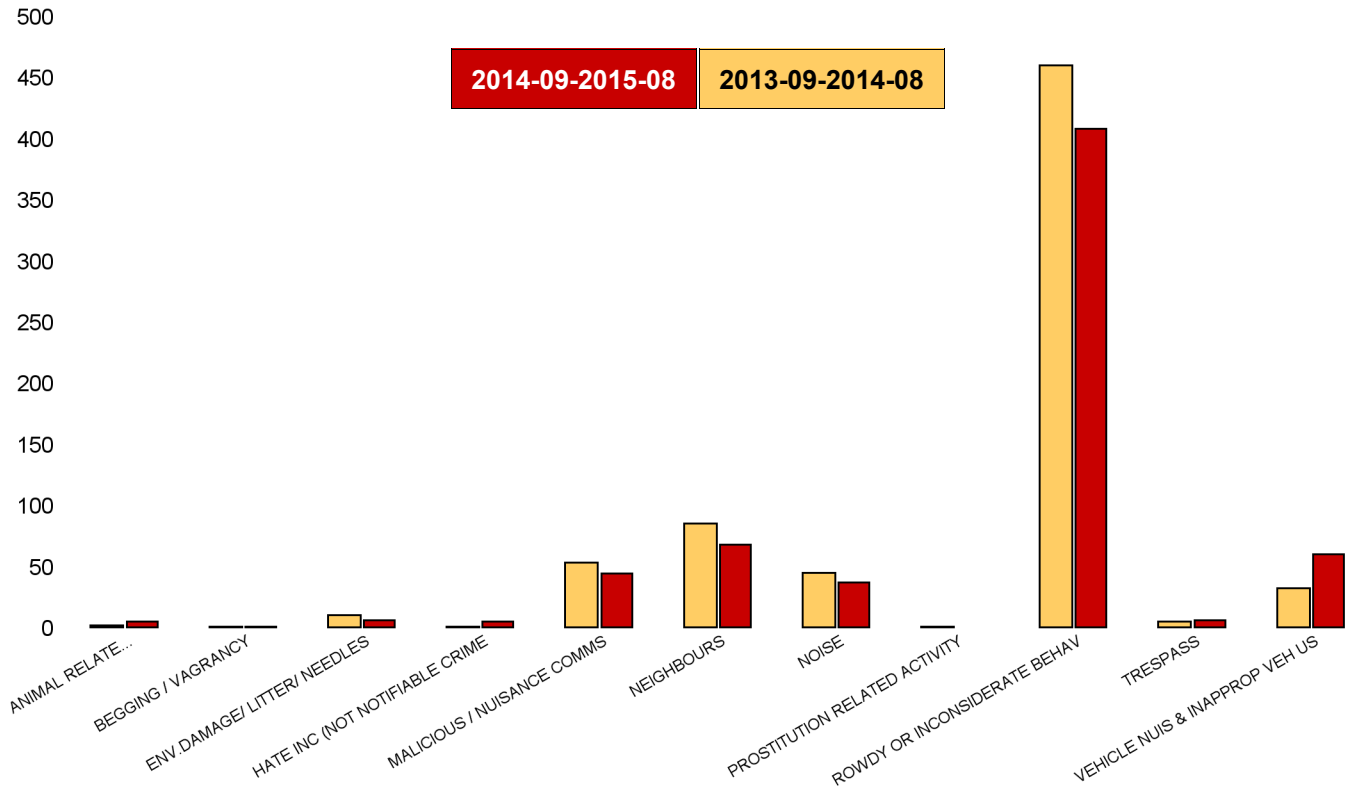
NSIR Closing Cat. 1 Desc	No of Incidents Latest 12 Months	No of Incidents Previous 12 Months	+/- Incidents	% Change Incidents
ANIMAL RELATED INC ANTI-SOCIAL	31	26	5	19%
BEGGING / VAGRANCY	40	14	26	186%
ENV.DAMAGE/ LITTER/ NEEDLES	32	34	-2	-6%
HATE INC (NOT NOTIFIABLE CRIME	7	9	-2	-22%
MALICIOUS / NUISANCE COMMS	220	247	-27	-11%
NEIGHBOURS	352	360	-8	-2%
NOISE	139	156	-17	-11%
PROSTITUTION RELATED ACTIVITY	2	3	-1	-33%
ROWDY OR INCONSIDERATE BEHAV	2103	2354	-251	-11%
TRESPASS	27	36	-9	-25%
VEHICLE NUIS & INAPPROP VEH US	465	286	179	63%
Sum:	3418	3525	-107	-3%



Kettering Town Forum Report 2013-09 to 2015-08

All Saints

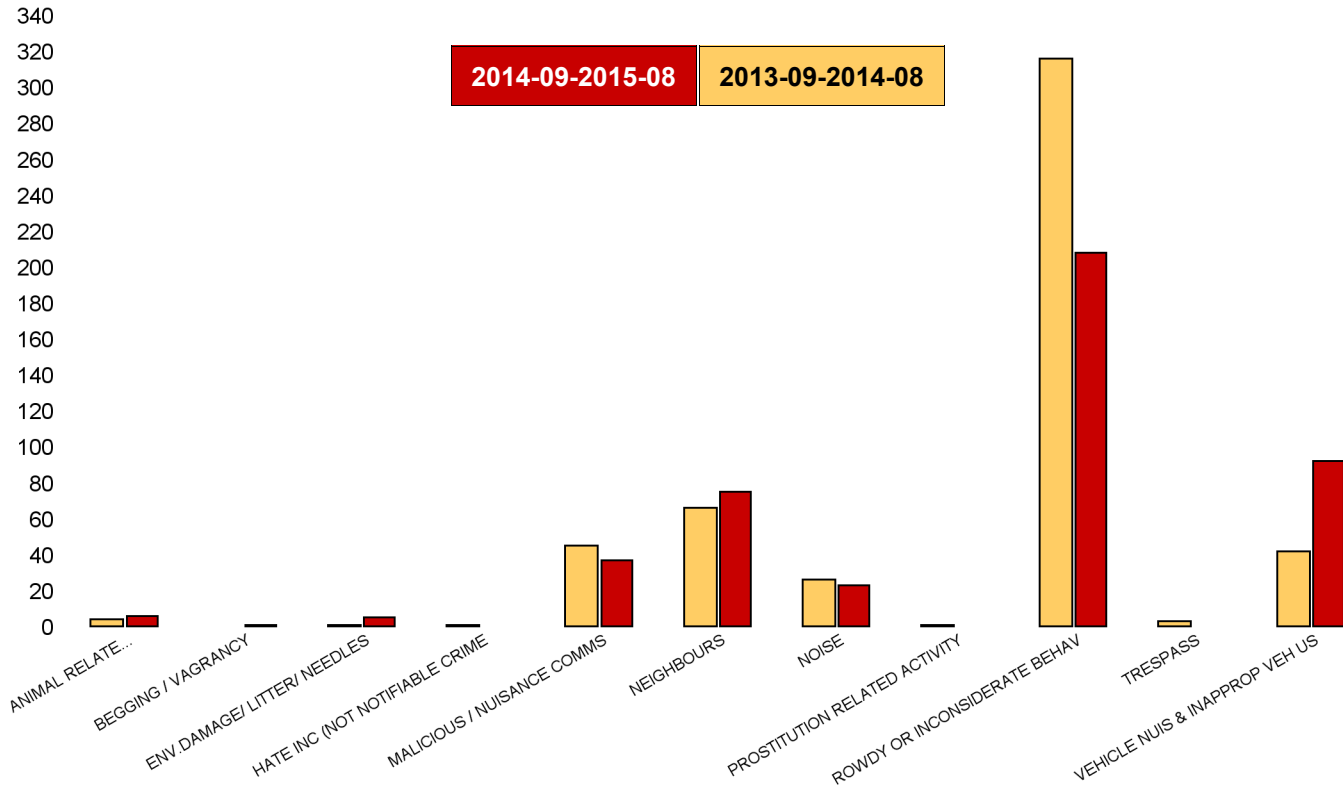
NSIR Closing Cat. 1 Desc	No of Incidents Latest 12 Months	No of Incidents Previous 12 Months	+/- Incidents	% Change Incidents
ANIMAL RELATED INC ANTI-SOCIAL	5	2	3	150%
BEGGING / VAGRANCY	1	1	0	0%
ENV.DAMAGE/ LITTER/ NEEDLES	6	10	-4	-40%
HATE INC (NOT NOTIFIABLE CRIME	5	1	4	400%
MALICIOUS / NUISANCE COMMS	44	53	-9	-17%
NEIGHBOURS	68	85	-17	-20%
NOISE	37	45	-8	-18%
PROSTITUTION RELATED ACTIVITY	0	1	-1	-100%
ROWDY OR INCONSIDERATE BEHAV	408	460	-52	-11%
TRESPASS	6	5	1	20%
VEHICLE NUIS & INAPPROP VEH US	60	32	28	88%
Sum:	640	695	-55	-8%



Kettering Town Forum Report 2013-09 to 2015-08

Avondale Grange

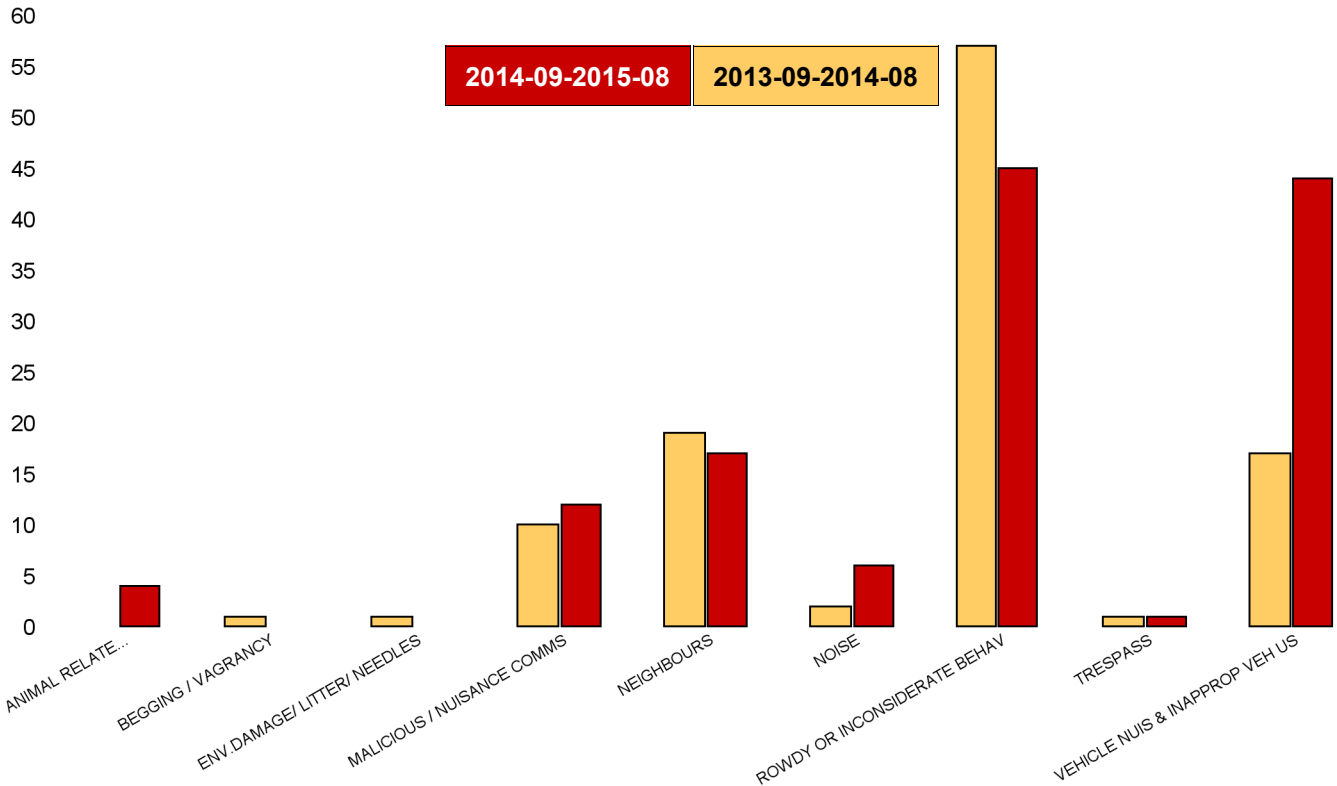
NSIR Closing Cat. 1 Desc	No of Incidents Latest 12 Months	No of Incidents Previous 12 Months	+/- Incidents	% Change Incidents
ANIMAL RELATED INC ANTI-SOCIAL	6	4	2	50%
BEGGING / VAGRANCY	1	0	1	0%
ENV.DAMAGE/ LITTER/ NEEDLES	5	1	4	400%
HATE INC (NOT NOTIFIABLE CRIME	0	1	-1	-100%
MALICIOUS / NUISANCE COMMS	37	45	-8	-18%
NEIGHBOURS	75	66	9	14%
NOISE	23	26	-3	-12%
PROSTITUTION RELATED ACTIVITY	0	1	-1	-100%
ROWDY OR INCONSIDERATE BEHAV	208	316	-108	-34%
TRESPASS	0	3	-3	-100%
VEHICLE NUIS & INAPPROP VEH US	92	42	50	119%
Sum:	447	505	-58	-11%



Kettering Town Forum Report 2013-09 to 2015-08

Brambleside

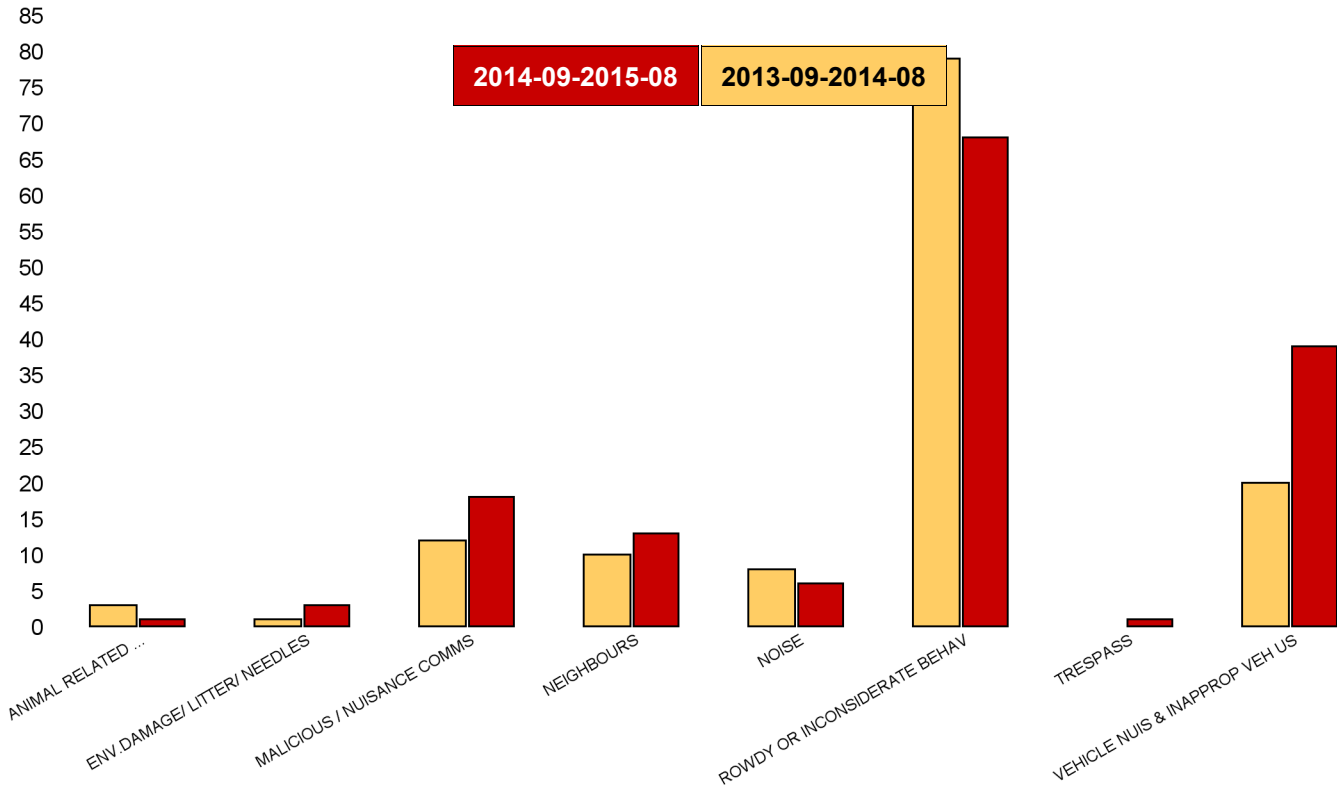
NSIR Closing Cat. 1 Desc	No of Incidents Latest 12 Months	No of Incidents Previous 12 Months	+/- Incidents	% Change Incidents
ANIMAL RELATED INC ANTI-SOCIAL	4	0	4	0%
BEGGING / VAGRANCY	0	1	-1	-100%
ENV.DAMAGE/ LITTER/ NEEDLES	0	1	-1	-100%
MALICIOUS / NUISANCE COMMS	12	10	2	20%
NEIGHBOURS	17	19	-2	-11%
NOISE	6	2	4	200%
ROWDY OR INCONSIDERATE BEHAV	45	57	-12	-21%
TRESPASS	1	1	0	0%
VEHICLE NUIS & INAPPROP VEH US	44	17	27	159%
Sum:	129	108	21	19%



Kettering Town Forum Report 2013-09 to 2015-08

Ise Lodge

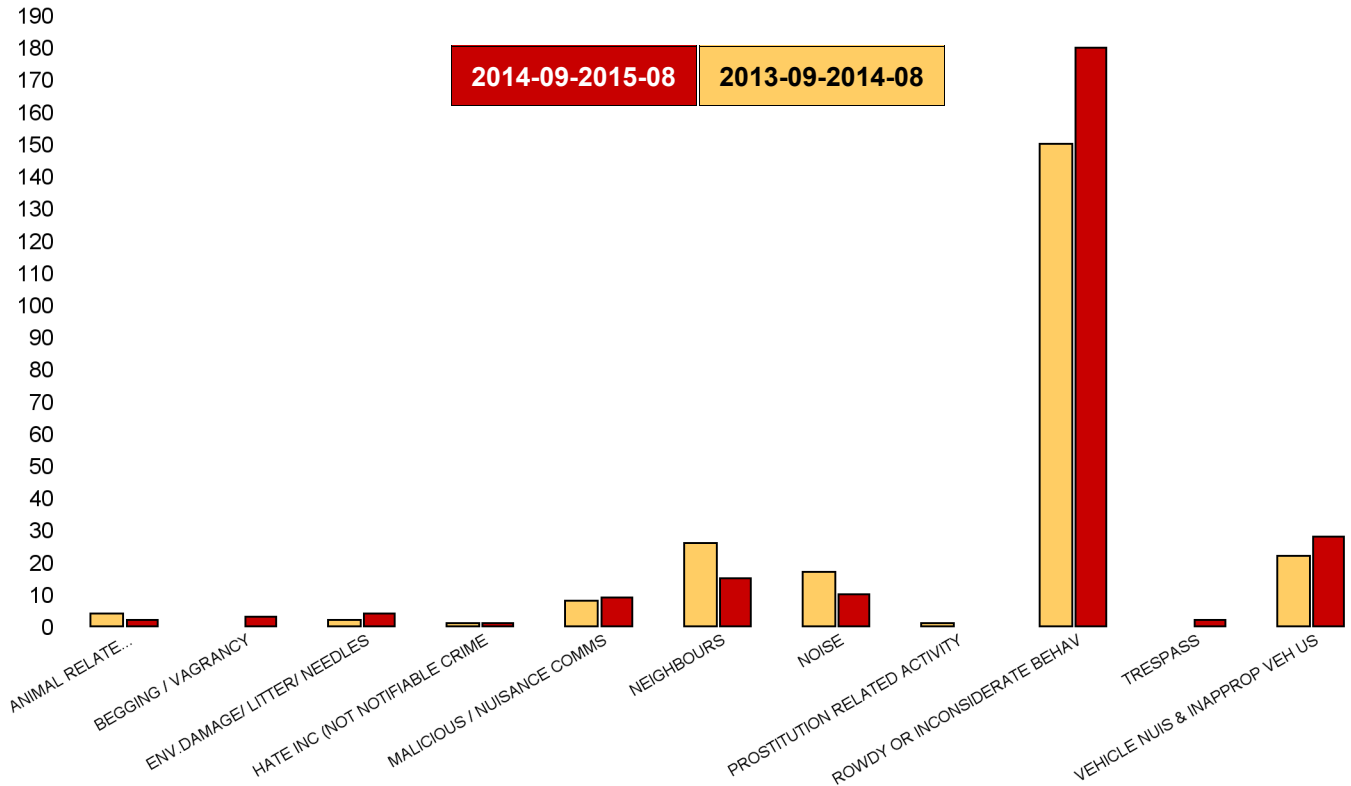
NSIR Closing Cat. 1 Desc	No of Incidents Latest 12 Months	No of Incidents Previous 12 Months	+/- Incidents	% Change Incidents
ANIMAL RELATED INC ANTI-SOCIAL	1	3	-2	-67%
ENV.DAMAGE/ LITTER/ NEEDLES	3	1	2	200%
MALICIOUS / NUISANCE COMMS	18	12	6	50%
NEIGHBOURS	13	10	3	30%
NOISE	6	8	-2	-25%
ROWDY OR INCONSIDERATE BEHAV	68	79	-11	-14%
TRESPASS	1	0	1	0%
VEHICLE NUIS & INAPPROP VEH US	39	20	19	95%
Sum:	149	133	16	12%



Kettering Town Forum Report 2013-09 to 2015-08

Northfield

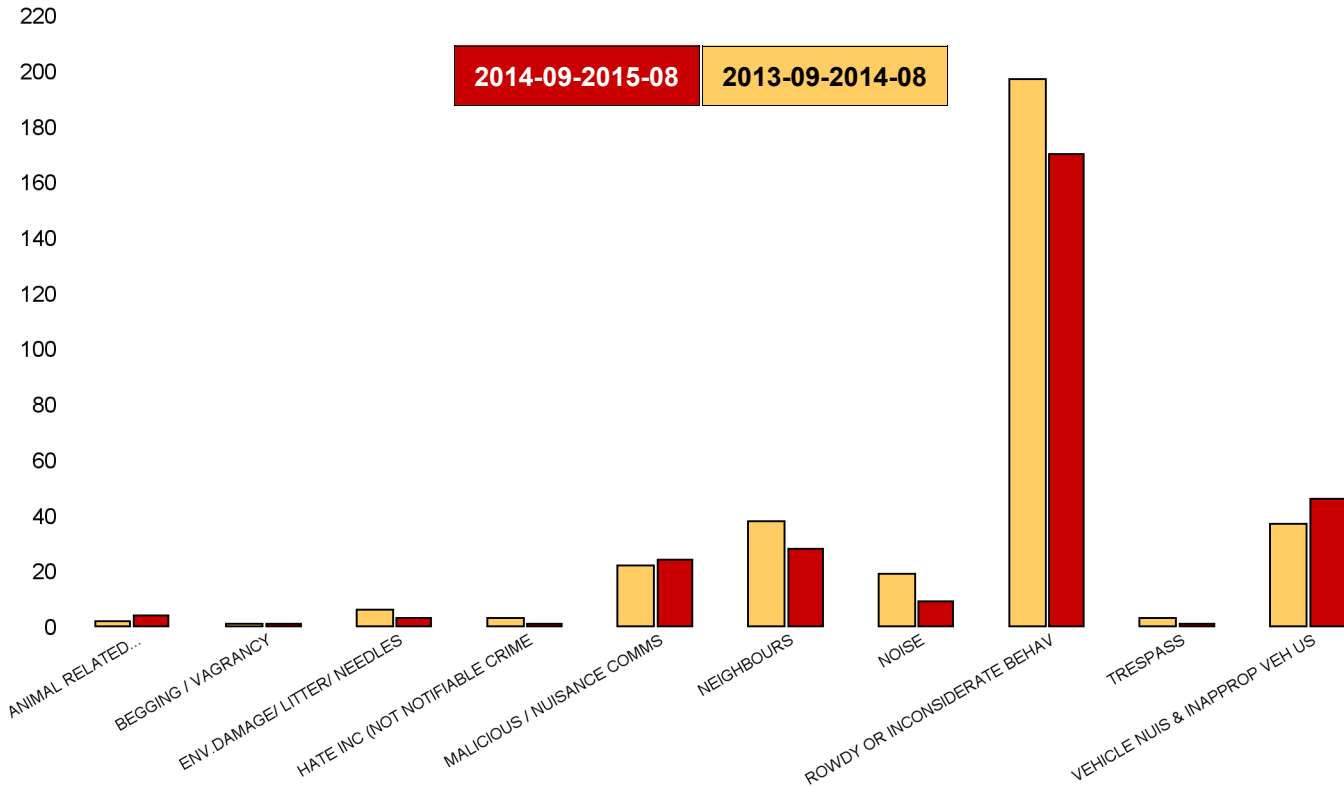
NSIR Closing Cat. 1 Desc	No of Incidents Latest 12 Months	No of Incidents Previous 12 Months	+/- Incidents	% Change Incidents
ANIMAL RELATED INC ANTI-SOCIAL	2	4	-2	-50%
BEGGING / VAGRANCY	3	0	3	0%
ENV.DAMAGE/ LITTER/ NEEDLES	4	2	2	100%
HATE INC (NOT NOTIFIABLE CRIME	1	1	0	0%
MALICIOUS / NUISANCE COMMS	9	8	1	13%
NEIGHBOURS	15	26	-11	-42%
NOISE	10	17	-7	-41%
PROSTITUTION RELATED ACTIVITY	0	1	-1	-100%
ROWDY OR INCONSIDERATE BEHAV	180	150	30	20%
TRESPASS	2	0	2	0%
VEHICLE NUIS & INAPPROP VEH US	28	22	6	27%
Sum:	254	231	23	10%



Kettering Town Forum Report 2013-09 to 2015-08

Pipers Hill

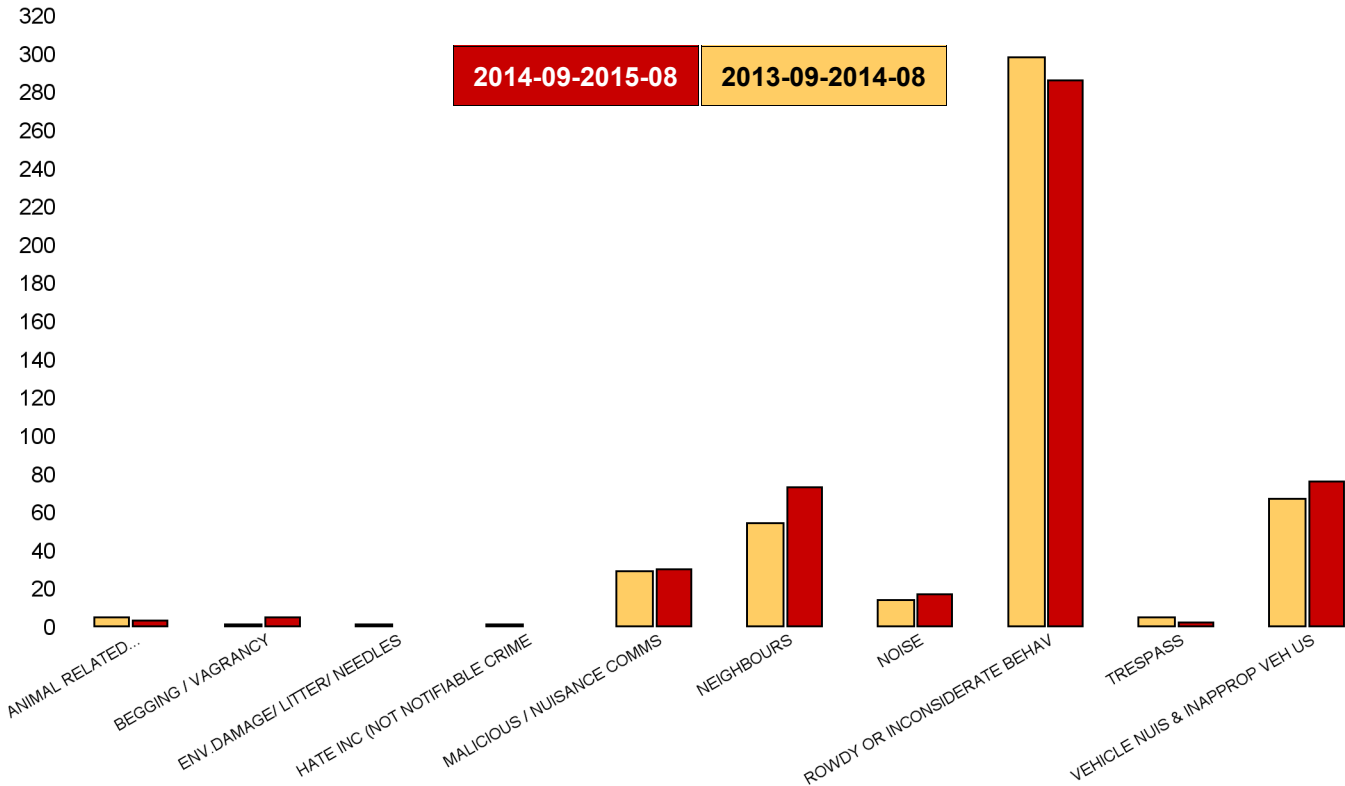
NSIR Closing Cat. 1 Desc	No of Incidents Latest 12 Months	No of Incidents Previous 12 Months	+/- Incidents	% Change Incidents
ANIMAL RELATED INC ANTI-SOCIAL	4	2	2	100%
BEGGING / VAGRANCY	1	1	0	0%
ENV.DAMAGE/ LITTER/ NEEDLES	3	6	-3	-50%
HATE INC (NOT NOTIFIABLE CRIME	1	3	-2	-67%
MALICIOUS / NUISANCE COMMS	24	22	2	9%
NEIGHBOURS	28	38	-10	-26%
NOISE	9	19	-10	-53%
ROWDY OR INCONSIDERATE BEHAV	170	197	-27	-14%
TRESPASS	1	3	-2	-67%
VEHICLE NUIS & INAPPROP VEH US	46	37	9	24%
Sum:	287	328	-41	-13%



Kettering Town Forum Report 2013-09 to 2015-08

St Michaels and Wicksteed

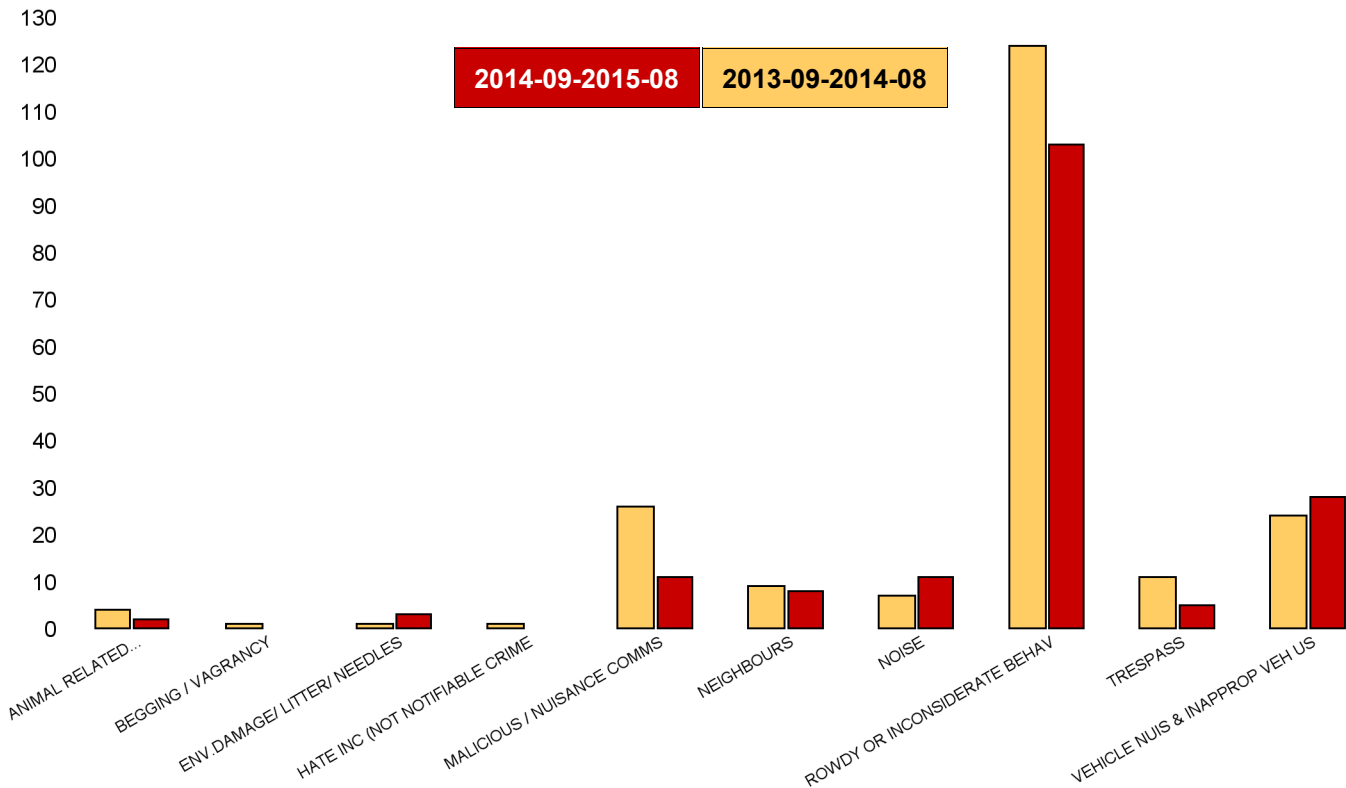
NSIR Closing Cat. 1 Desc	No of Incidents Latest 12 Months	No of Incidents Previous 12 Months	+/- Incidents	% Change Incidents
ANIMAL RELATED INC ANTI-SOCIAL	3	5	-2	-40%
BEGGING / VAGRANCY	5	1	4	400%
ENV.DAMAGE/ LITTER/ NEEDLES	0	1	-1	-100%
HATE INC (NOT NOTIFIABLE CRIME	0	1	-1	-100%
MALICIOUS / NUISANCE COMMS	30	29	1	3%
NEIGHBOURS	73	54	19	35%
NOISE	17	14	3	21%
ROWDY OR INCONSIDERATE BEHAV	286	298	-12	-4%
TRESPASS	2	5	-3	-60%
VEHICLE NUIS & INAPPROP VEH US	76	67	9	13%
Sum:	492	475	17	4%



Kettering Town Forum Report 2013-09 to 2015-08

St Peters

NSIR Closing Cat. 1 Desc	No of Incidents Latest 12 Months	No of Incidents Previous 12 Months	+/- Incidents	% Change Incidents
ANIMAL RELATED INC ANTI-SOCIAL	2	4	-2	-50%
BEGGING / VAGRANCY	0	1	-1	-100%
ENV.DAMAGE/ LITTER/ NEEDLES	3	1	2	200%
HATE INC (NOT NOTIFIABLE CRIME	0	1	-1	-100%
MALICIOUS / NUISANCE COMMS	11	26	-15	-58%
NEIGHBOURS	8	9	-1	-11%
NOISE	11	7	4	57%
ROWDY OR INCONSIDERATE BEHAV	103	124	-21	-17%
TRESPASS	5	11	-6	-55%
VEHICLE NUIS & INAPPROP VEH US	28	24	4	17%
Sum:	171	208	-37	-18%



Kettering Town Forum Report 2013-09 to 2015-08

William Knibb

NSIR Closing Cat. 1 Desc	No of Incidents Latest 12 Months	No of Incidents Previous 12 Months	+/- Incidents	% Change Incidents
ANIMAL RELATED INC ANTI-SOCIAL	4	2	2	100%
BEGGING / VAGRANCY	29	9	20	222%
ENV.DAMAGE/ LITTER/ NEEDLES	8	11	-3	-27%
HATE INC (NOT NOTIFIABLE CRIME	0	1	-1	-100%
MALICIOUS / NUISANCE COMMS	35	42	-7	-17%
NEIGHBOURS	55	53	2	4%
NOISE	20	18	2	11%
PROSTITUTION RELATED ACTIVITY	2	0	2	0%
ROWDY OR INCONSIDERATE BEHAV	635	673	-38	-6%
TRESPASS	9	8	1	13%
VEHICLE NUIS & INAPPROP VEH US	52	25	27	108%
Sum:	849	842	7	1%

