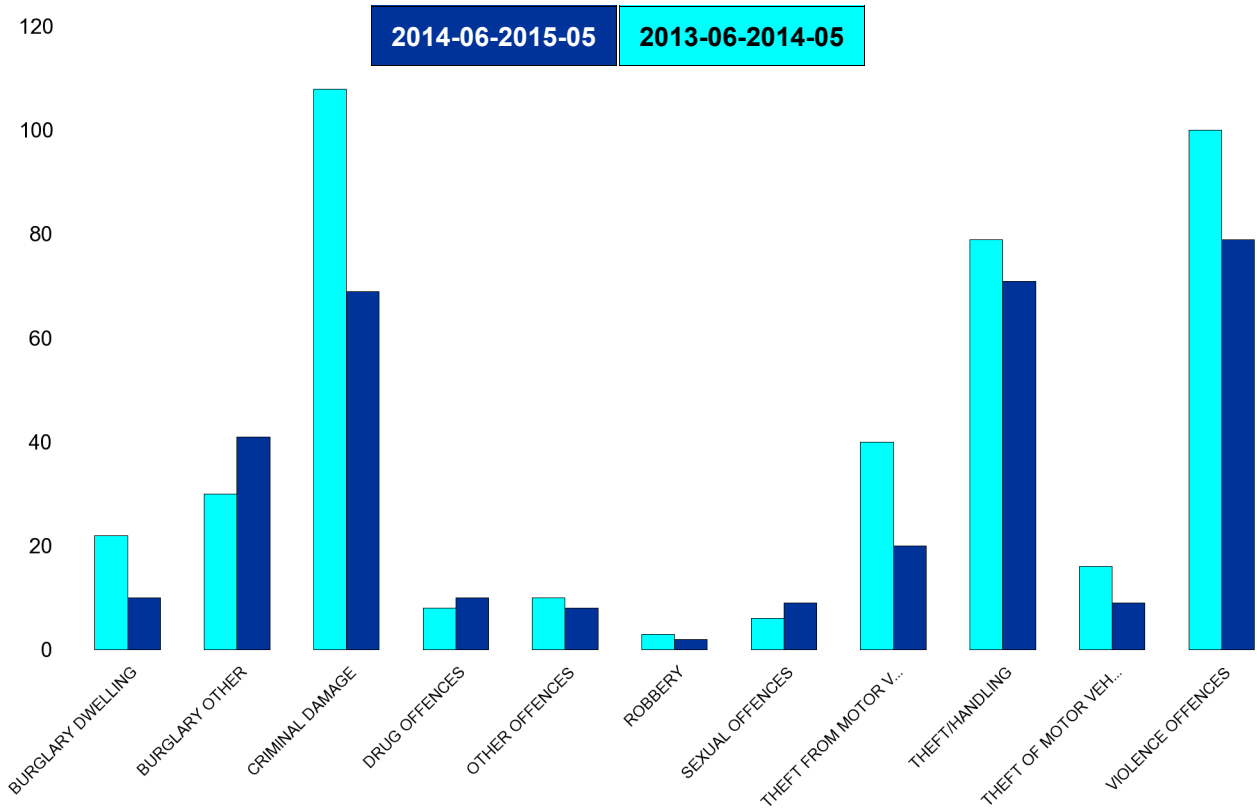


A6 Towns Forum Report 2013-06 to 2015-05

K006 & K007 Desborough - Crime

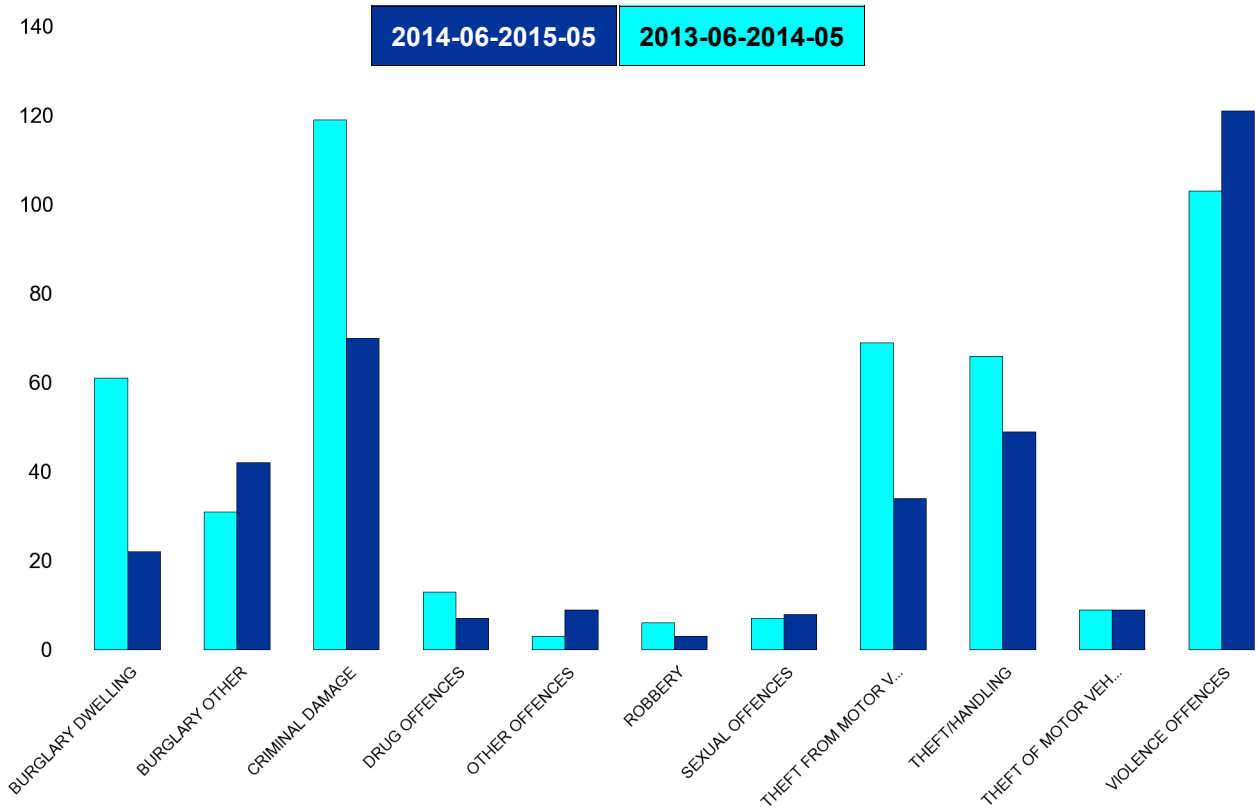
HO Group	Number of Crimes Latest 12 Months	Number of Crimes Previous 12 Months	+/- Crime	% Change	No of Resolved Outcome Crimes	Detection Rate (Past 12 Months)
BURGLARY DWELLING	10	22	-12	-55%	1	10%
BURGLARY OTHER	41	30	11	37%	3	7%
CRIMINAL DAMAGE	69	108	-39	-36%	7	10%
DRUG OFFENCES	10	8	2	25%	6	60%
OTHER OFFENCES	8	10	-2	-20%	4	50%
ROBBERY	2	3	-1	-33%	1	50%
SEXUAL OFFENCES	9	6	3	50%	1	11%
THEFT FROM MOTOR VEHICLES	20	40	-20	-50%	1	5%
THEFT/HANDLING	71	79	-8	-10%	14	20%
THEFT OF MOTOR VEHICLES	9	16	-7	-44%	1	11%
VIOLENCE OFFENCES	79	100	-21	-21%	24	30%
Sum:	328	422	-94	-22%	63	19%



A6 Towns Forum Report 2013-06 to 2015-05

K012 Rothwell - Crime

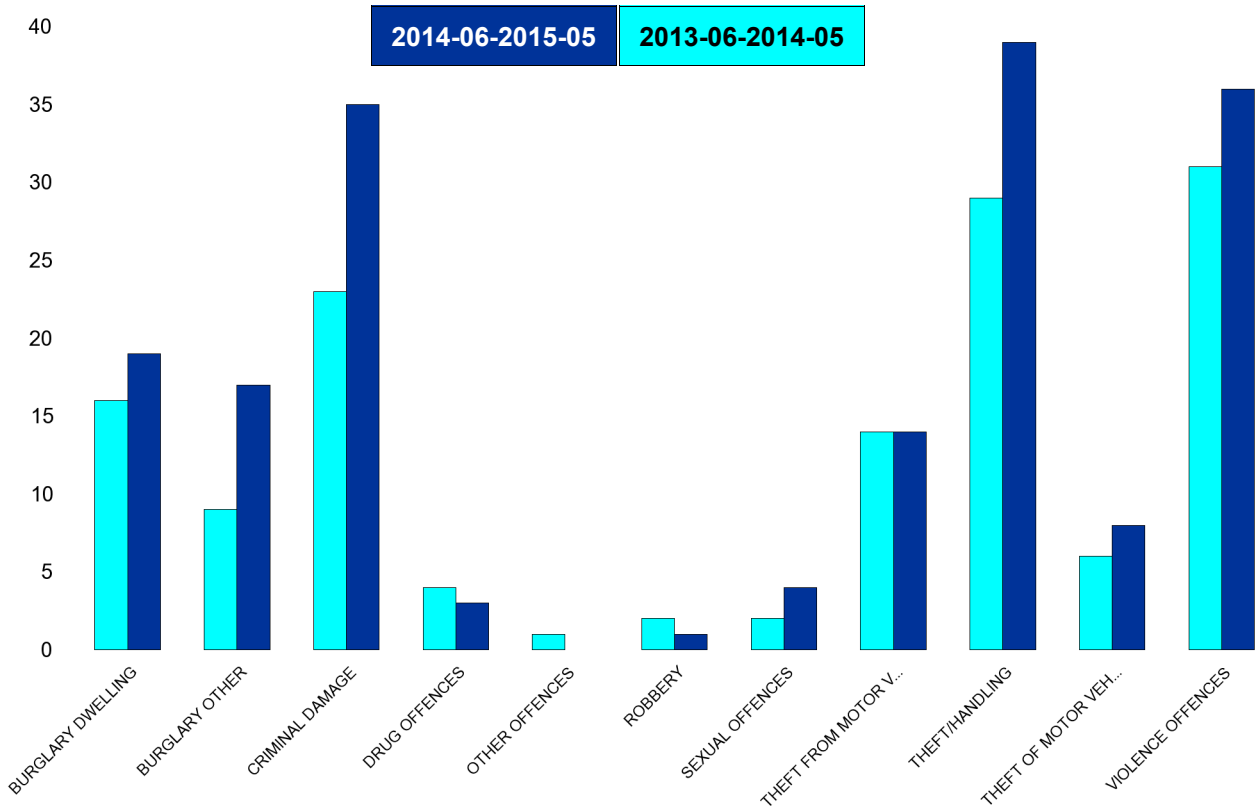
HO Group	No of Crimes Latest 12 Months	No of Crimes Previous 12 Months	+/- Crime	% Change	No of Resolved Outcome Crimes	Detection Rate (Past 12 Months)
BURGLARY DWELLING	22	61	-39	-64%	4	18%
BURGLARY OTHER	42	31	11	35%	3	7%
CRIMINAL DAMAGE	70	119	-49	-41%	13	19%
DRUG OFFENCES	7	13	-6	-46%	9	129%
OTHER OFFENCES	9	3	6	200%	6	67%
ROBBERY	3	6	-3	-50%	0	0%
SEXUAL OFFENCES	8	7	1	14%	2	25%
THEFT FROM MOTOR VEHICLES	34	69	-35	-51%	0	0%
THEFT/HANDLING	49	66	-17	-26%	15	31%
THEFT OF MOTOR VEHICLES	9	9	0	0%	3	33%
VIOLENCE OFFENCES	121	103	18	17%	31	26%
Sum:	374	487	-113	-23%	86	23%



A6 Towns Forum Report 2013-06 to 2015-05

K003 Barton - Crime

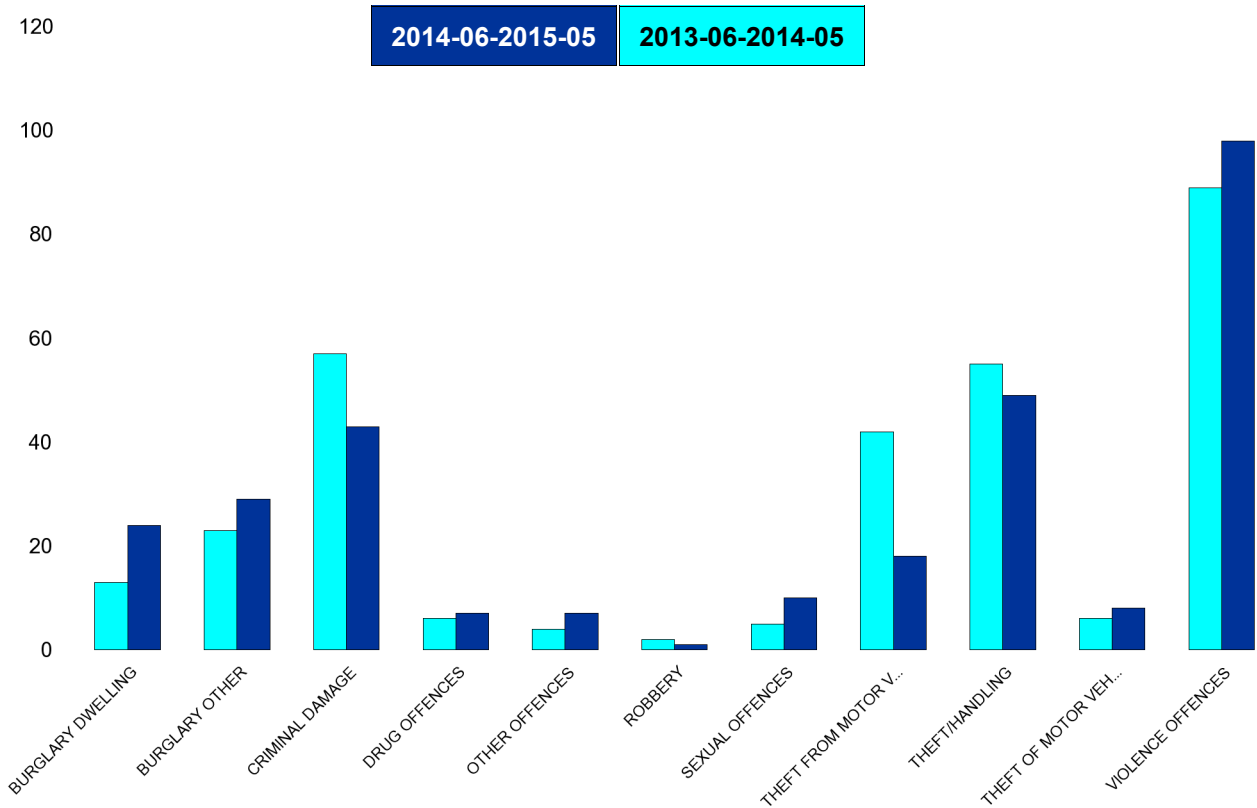
HO Group	No of Crimes Latest 12 Months	No of Crimes Previous 12 Months	+/- Crime	% Change	No of Resolved Outcome Crimes	Detection Rate (Past 12 Months)
BURGLARY DWELLING	19	16	3	19%	1	5%
BURGLARY OTHER	17	9	8	89%	0	0%
CRIMINAL DAMAGE	35	23	12	52%	4	11%
DRUG OFFENCES	3	4	-1	-25%	1	33%
OTHER OFFENCES	0	1	-1	-100%	0	0%
ROBBERY	1	2	-1	-50%	0	0%
SEXUAL OFFENCES	4	2	2	100%	0	0%
THEFT FROM MOTOR VEHICLES	14	14	0	0%	0	0%
THEFT/HANDLING	39	29	10	34%	7	18%
THEFT OF MOTOR VEHICLES	8	6	2	33%	1	13%
VIOLENCE OFFENCES	36	31	5	16%	8	22%
Sum:	176	137	39	28%	22	13%



A6 Towns Forum Report 2013-06 to 2015-05

K005 Burton Latimer - Crime

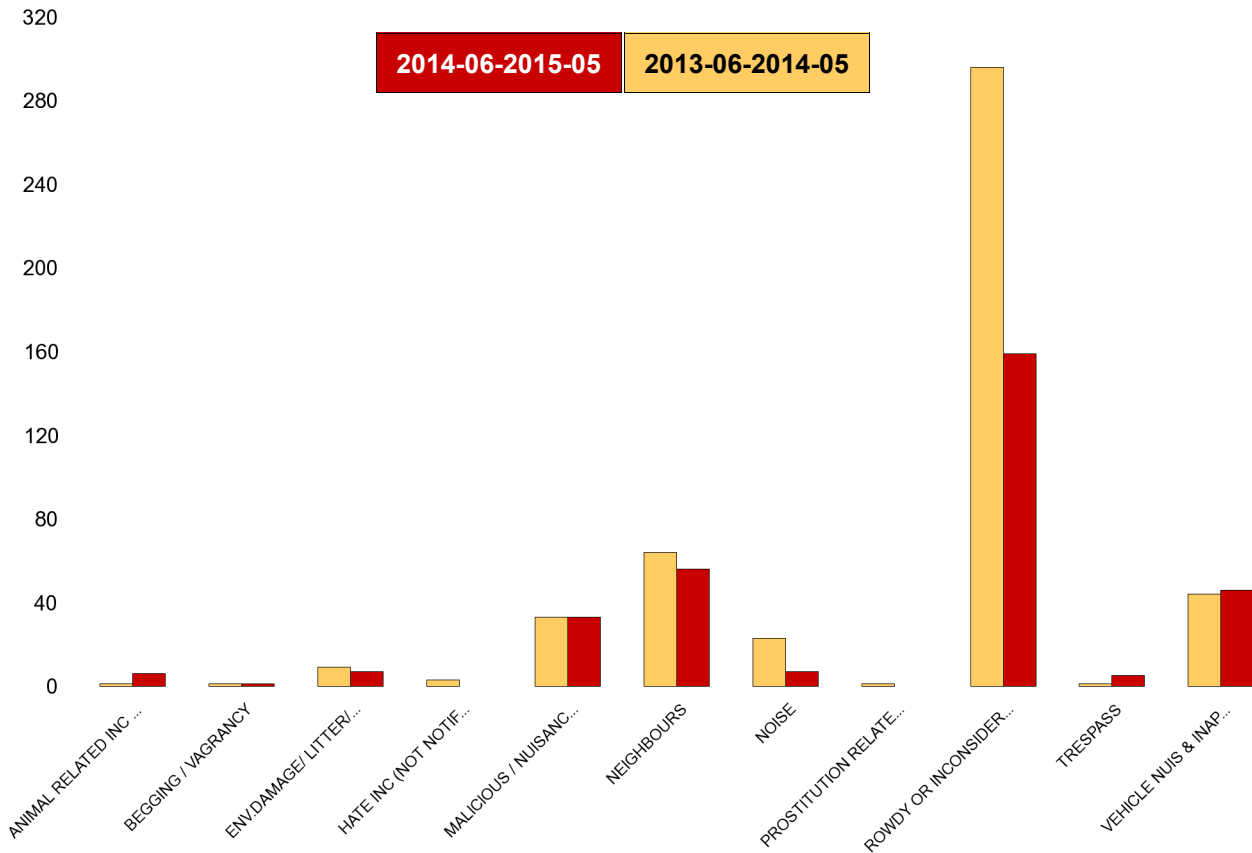
HO Group	No of Crimes Latest 12 Months	No of Crimes Previous 12 Months	+/- Crime	% Change	No of Resolved Outcome Crimes	Detection Rate (Past 12 Months)
BURGLARY DWELLING	24	13	11	85%	0	0%
BURGLARY OTHER	29	23	6	26%	1	3%
CRIMINAL DAMAGE	43	57	-14	-25%	4	9%
DRUG OFFENCES	7	6	1	17%	6	86%
OTHER OFFENCES	7	4	3	75%	3	43%
ROBBERY	1	2	-1	-50%	0	0%
SEXUAL OFFENCES	10	5	5	100%	0	0%
THEFT FROM MOTOR VEHICLES	18	42	-24	-57%	0	0%
THEFT/HANDLING	49	55	-6	-11%	14	29%
THEFT OF MOTOR VEHICLES	8	6	2	33%	2	25%
VIOLENCE OFFENCES	98	89	9	10%	28	29%
Sum:	294	302	-8	-3%	58	20%



A6 Towns Forum Report 2013-06 to 2015-05

K006 & K007 Desborough ASB

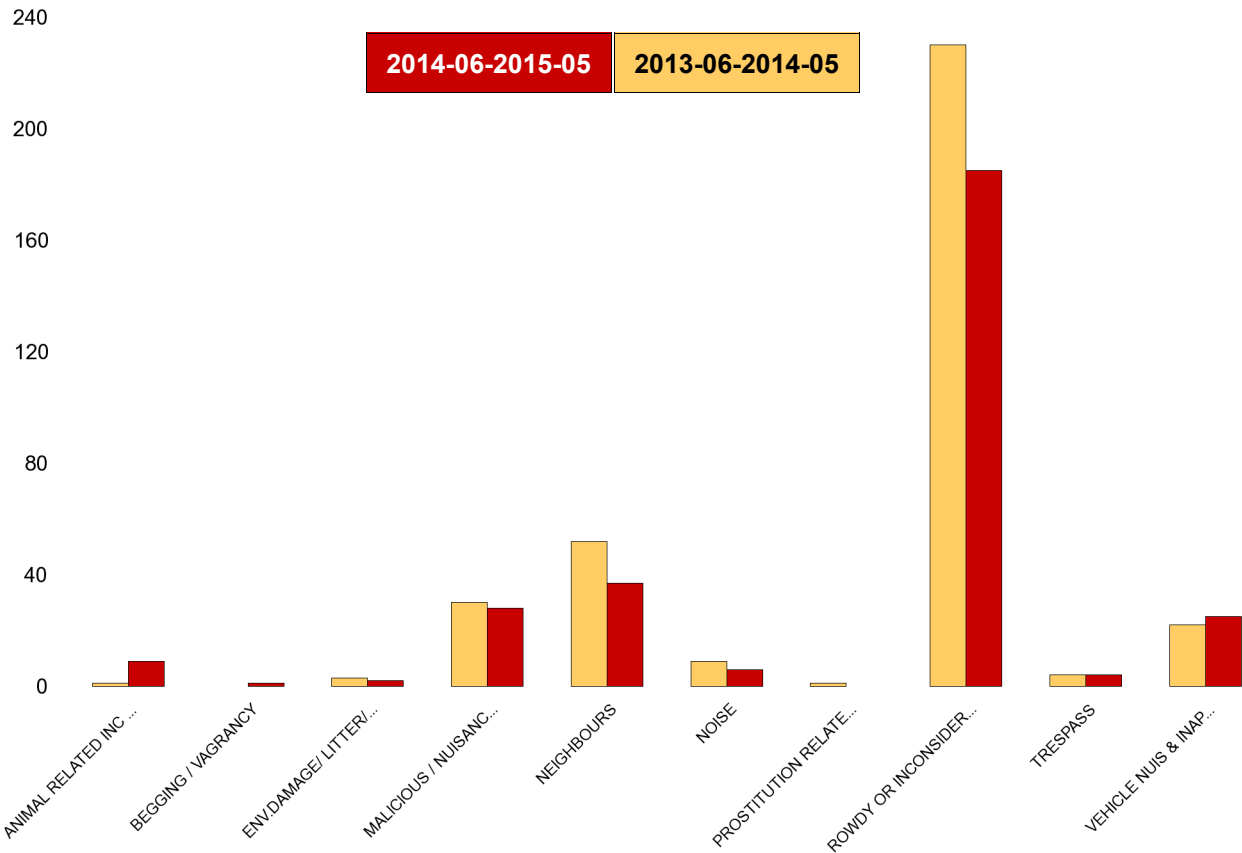
NSIR Closing Cat. 1 Desc	Number of Incidents Latest 12 Months	No of Incidents previous 12 Months	+/- Incidents	% Change Incidents
ANIMAL RELATED INC ANTI-SOCIAL	6	1	5	500%
BEGGING / VAGRANCY	1	1	0	0%
ENV.DAMAGE/ LITTER/ NEEDLES	7	9	-2	-22%
HATE INC (NOT NOTIFIABLE CRIME	0	3	-3	-100%
MALICIOUS / NUISANCE COMMS	33	33	0	0%
NEIGHBOURS	56	64	-8	-13%
NOISE	7	23	-16	-70%
PROSTITUTION RELATED ACTIVITY	0	1	-1	-100%
ROWDY OR INCONSIDERATE BEHAV	159	296	-137	-46%
TRESPASS	5	1	4	400%
VEHICLE NUIS & INAPPROP VEH US	46	44	2	5%
Sum:	320	476	-156	-33%



A6 Towns Forum Report 2013-06 to 2015-05

K012 Rothwell ASB

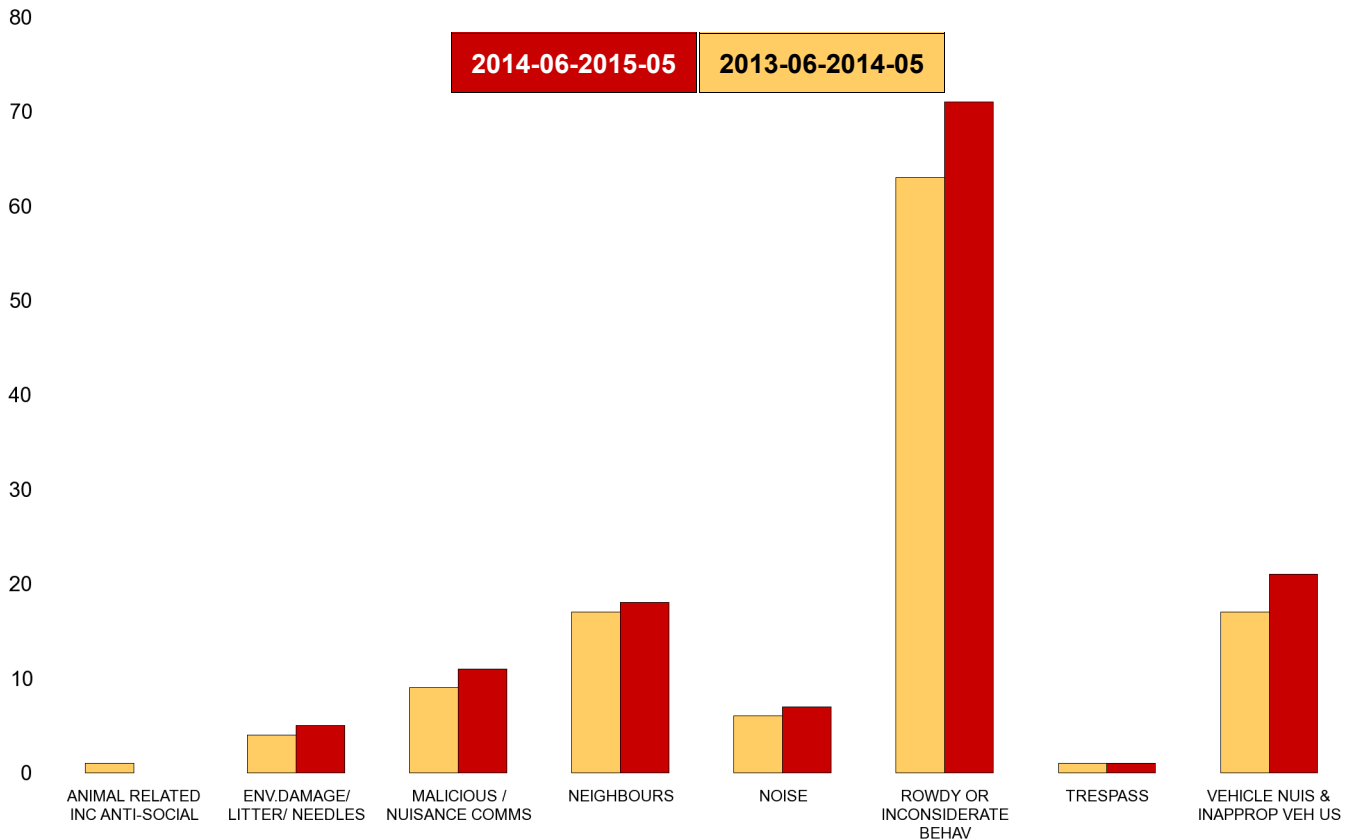
NSIR Closing Cat. 1 Desc	Number of Incidents Latest 12 Months	No of Incidents previous 12 Months	+/- Incidents	% Change Incidents
ANIMAL RELATED INC ANTI-SOCIAL	9	1	8	800%
BEGGING / VAGRANCY	1	0	1	0%
ENV.DAMAGE/ LITTER/ NEEDLES	2	3	-1	-33%
MALICIOUS / NUISANCE COMMS	28	30	-2	-7%
NEIGHBOURS	37	52	-15	-29%
NOISE	6	9	-3	-33%
PROSTITUTION RELATED ACTIVITY	0	1	-1	-100%
ROWDY OR INCONSIDERATE BEHAV	185	230	-45	-20%
TRESPASS	4	4	0	0%
VEHICLE NUIS & INAPPROP VEH US	25	22	3	14%
Sum:	297	352	-55	-16%



A6 Towns Forum Report 2013-06 to 2015-05

K003 Barton ASB

NSIR Closing Cat. 1 Desc	No of Incidents Lastest 12 months	No of Incidents Previous 12 months	+/- Incidents	% Change Incidents
ANIMAL RELATED INC ANTI-SOCIAL	0	1	-1	-100%
ENV.DAMAGE/ LITTER/ NEEDLES	5	4	1	25%
MALICIOUS / NUISANCE COMMS	11	9	2	22%
NEIGHBOURS	18	17	1	6%
NOISE	7	6	1	17%
ROWDY OR INCONSIDERATE BEHAV	71	63	8	13%
TRESPASS	1	1	0	0%
VEHICLE NUIS & INAPPROP VEH US	21	17	4	24%
Sum:	134	118	16	14%



A6 Towns Forum Report 2013-06 to 2015-05

K005 Latimer ASB

NSIR Closing Cat. 1 Desc	Number of Incidents Latest 12 Months	No of Incidents previous 12 Months	+/- Incidents	% Change Incidents
ANIMAL RELATED INC ANTI-SOCIAL	7	4	3	75%
ENV.DAMAGE/ LITTER/ NEEDLES	2	2	0	0%
MALICIOUS / NUISANCE COMMS	34	35	-1	-3%
NEIGHBOURS	40	55	-15	-27%
NOISE	12	11	1	9%
ROWDY OR INCONSIDERATE BEHAV	117	166	-49	-30%
TRESPASS	1	2	-1	-50%
VEHICLE NUIS & INAPPROP VEH US	29	24	5	21%
Sum:	242	299	-57	-19%

