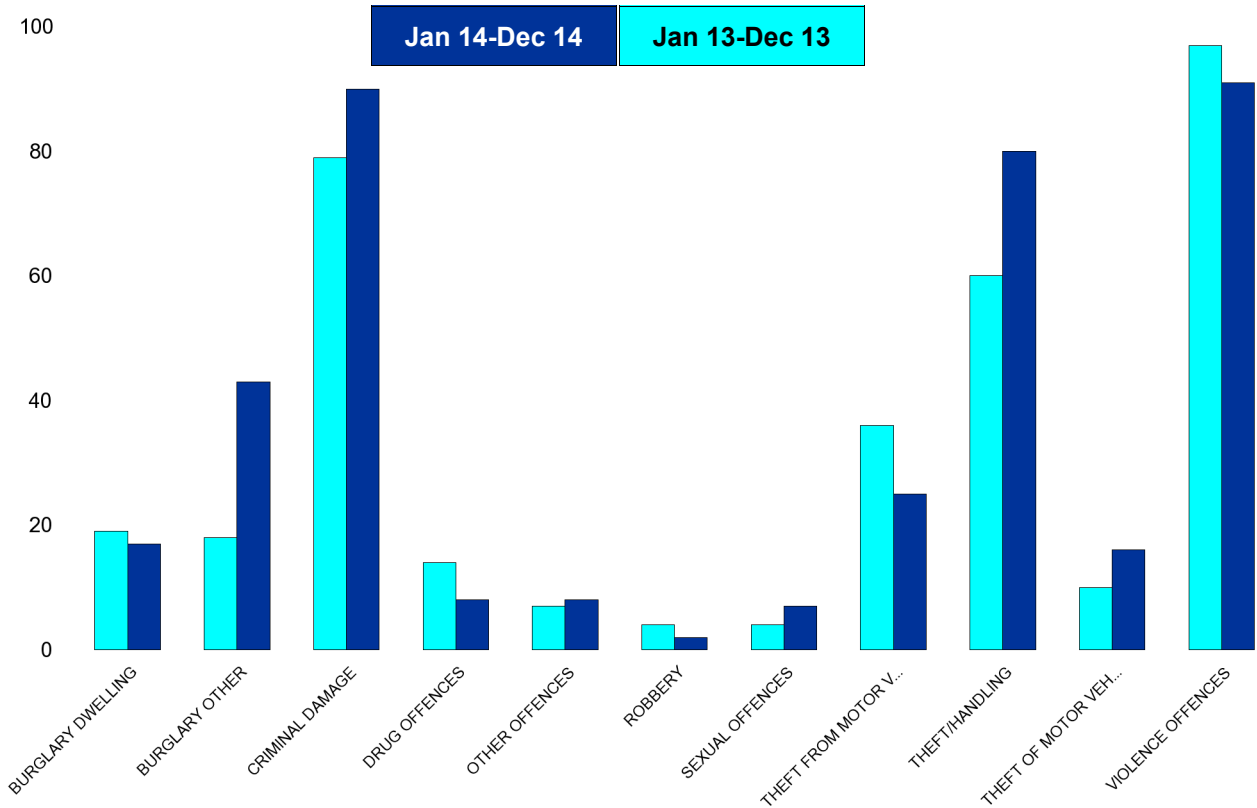


A6 Towns Forum Report

K006 & K007 Desborough - Crime

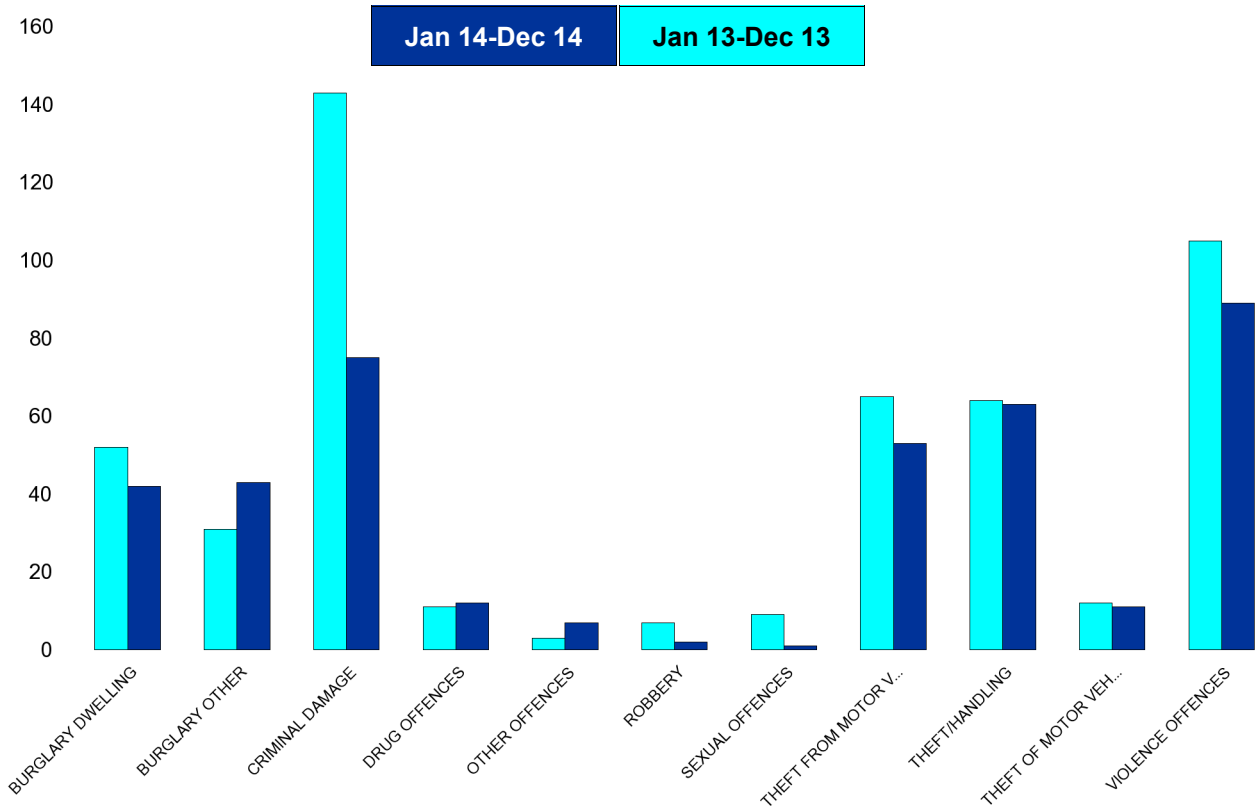
| HO Group | No of Crimes (Jan 14-Dec 14) | No of Crimes (Jan 13-Dec 13) | +/- Crime | % Change | No of Resolved Outcome Crimes | Detection Rate (Past 12 Months) |
|---------------------------|------------------------------|------------------------------|-----------|------------|-------------------------------|---------------------------------|
| BURGLARY DWELLING | 17 | 19 | -2 | -11% | 1 | 6% |
| BURGLARY OTHER | 43 | 18 | 25 | 139% | 1 | 2% |
| CRIMINAL DAMAGE | 90 | 79 | 11 | 14% | 10 | 11% |
| DRUG OFFENCES | 8 | 14 | -6 | -43% | 7 | 88% |
| OTHER OFFENCES | 8 | 7 | 1 | 14% | 8 | 100% |
| ROBBERY | 2 | 4 | -2 | -50% | 0 | 0% |
| SEXUAL OFFENCES | 7 | 4 | 3 | 75% | 0 | 0% |
| THEFT FROM MOTOR VEHICLES | 25 | 36 | -11 | -31% | 0 | 0% |
| THEFT/HANDLING | 80 | 60 | 20 | 33% | 14 | 18% |
| THEFT OF MOTOR VEHICLES | 16 | 10 | 6 | 60% | 2 | 13% |
| VIOLENCE OFFENCES | 91 | 97 | -6 | -6% | 36 | 40% |
| Sum: | 387 | 348 | 39 | 11% | 79 | 20% |



A6 Towns Forum Report

K012 Rothwell - Crime

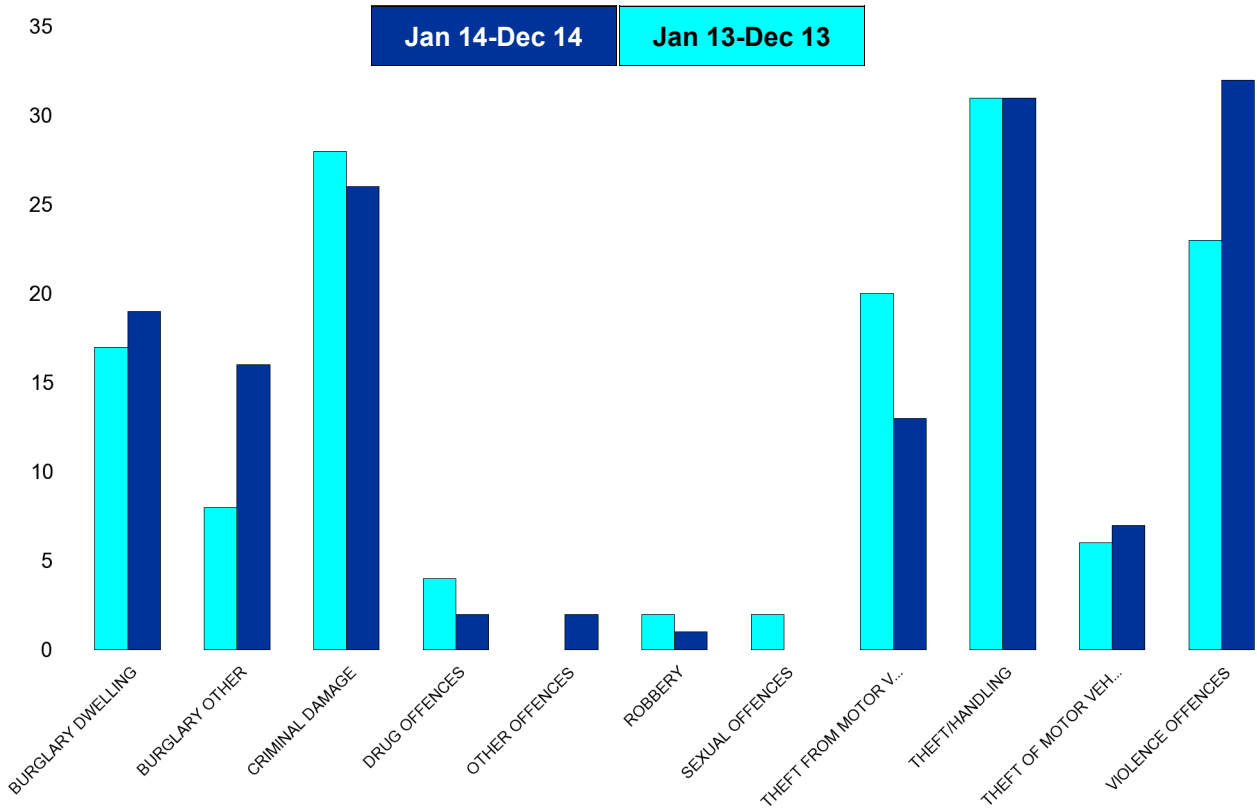
| HO Group | No of Crimes (Jan 14-Dec 14) | No of Crimes (Jan 13-Dec 13) | +/- Crime | % Change | No of Resolved Outcome Crimes | Detection Rate (Past 12 Months) |
|---------------------------|------------------------------|------------------------------|-------------|-------------|-------------------------------|---------------------------------|
| BURGLARY DWELLING | 42 | 52 | -10 | -19% | 4 | 10% |
| BURGLARY OTHER | 43 | 31 | 12 | 39% | 3 | 7% |
| CRIMINAL DAMAGE | 75 | 143 | -68 | -48% | 15 | 20% |
| DRUG OFFENCES | 12 | 11 | 1 | 9% | 12 | 100% |
| OTHER OFFENCES | 7 | 3 | 4 | 133% | 5 | 71% |
| ROBBERY | 2 | 7 | -5 | -71% | 0 | 0% |
| SEXUAL OFFENCES | 1 | 9 | -8 | -89% | 1 | 100% |
| THEFT FROM MOTOR VEHICLES | 53 | 65 | -12 | -18% | 0 | 0% |
| THEFT/HANDLING | 63 | 64 | -1 | -2% | 28 | 44% |
| THEFT OF MOTOR VEHICLES | 11 | 12 | -1 | -8% | 6 | 55% |
| VIOLENCE OFFENCES | 89 | 105 | -16 | -15% | 30 | 34% |
| Sum: | 398 | 502 | -104 | -21% | 104 | 26% |



A6 Towns Forum Report

K003 Barton - Crime

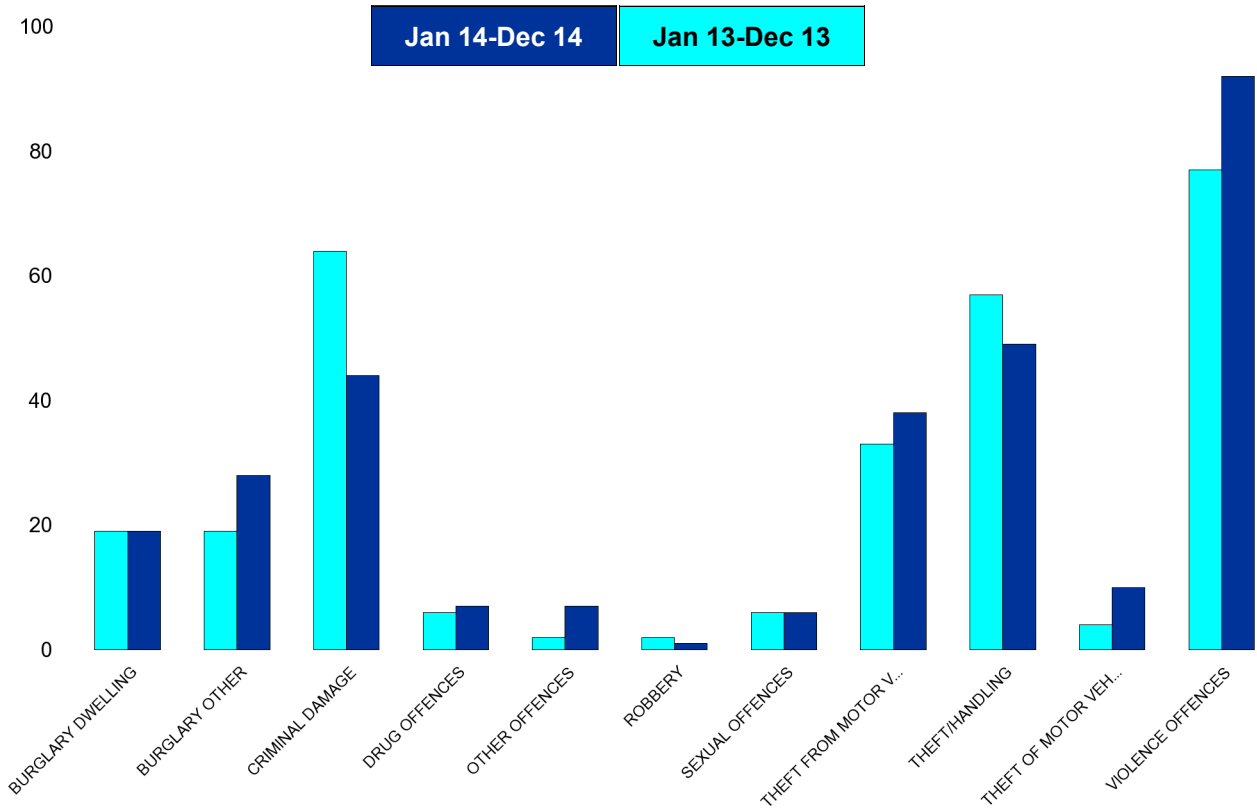
| HO Group | No of Crimes (Jan 14-Dec 14) | No of Crimes (Jan 13-Dec 13) | +/- Crime | % Change | No of Resolved Outcome Crimes | Detection Rate (Past 12 Months) |
|---------------------------|------------------------------|------------------------------|-----------|-----------|-------------------------------|---------------------------------|
| BURGLARY DWELLING | 19 | 17 | 2 | 12% | 1 | 5% |
| BURGLARY OTHER | 16 | 8 | 8 | 100% | 0 | 0% |
| CRIMINAL DAMAGE | 26 | 28 | -2 | -7% | 4 | 15% |
| DRUG OFFENCES | 2 | 4 | -2 | -50% | 2 | 100% |
| OTHER OFFENCES | 2 | 0 | 2 | 0% | 0 | 0% |
| ROBBERY | 1 | 2 | -1 | -50% | 0 | 0% |
| SEXUAL OFFENCES | 0 | 2 | -2 | -100% | 1 | 0% |
| THEFT FROM MOTOR VEHICLES | 13 | 20 | -7 | -35% | 0 | 0% |
| THEFT/HANDLING | 31 | 31 | 0 | 0% | 6 | 19% |
| THEFT OF MOTOR VEHICLES | 7 | 6 | 1 | 17% | 2 | 29% |
| VIOLENCE OFFENCES | 32 | 23 | 9 | 39% | 11 | 34% |
| Sum: | 149 | 141 | 8 | 6% | 27 | 18% |



A6 Towns Forum Report

K005 Burton Latimer - Crime

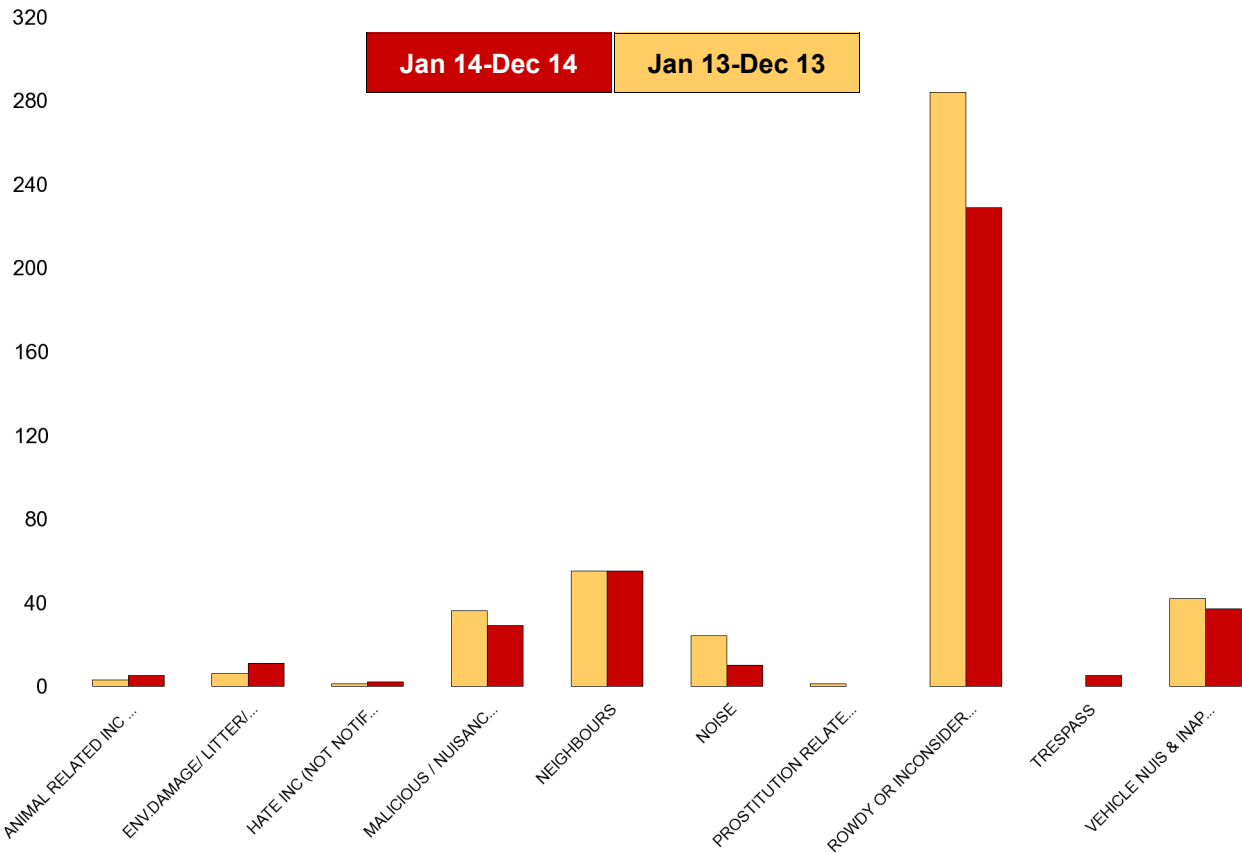
| HO Group | No of Crimes (Jan 14-Dec 14) | No of Crimes (Jan 13-Dec 13) | +/- Crime | % Change | No of Resolved Outcome Crimes | Detection Rate (Past 12 Months) |
|---------------------------|------------------------------|------------------------------|-----------|-----------|-------------------------------|---------------------------------|
| BURGLARY DWELLING | 19 | 19 | 0 | 0% | 0 | 0% |
| BURGLARY OTHER | 28 | 19 | 9 | 47% | 1 | 4% |
| CRIMINAL DAMAGE | 44 | 64 | -20 | -31% | 3 | 7% |
| DRUG OFFENCES | 7 | 6 | 1 | 17% | 9 | 129% |
| OTHER OFFENCES | 7 | 2 | 5 | 250% | 4 | 57% |
| ROBBERY | 1 | 2 | -1 | -50% | 0 | 0% |
| SEXUAL OFFENCES | 6 | 6 | 0 | 0% | 1 | 17% |
| THEFT FROM MOTOR VEHICLES | 38 | 33 | 5 | 15% | 6 | 16% |
| THEFT/HANDLING | 49 | 57 | -8 | -14% | 11 | 22% |
| THEFT OF MOTOR VEHICLES | 10 | 4 | 6 | 150% | 2 | 20% |
| VIOLENCE OFFENCES | 92 | 77 | 15 | 19% | 32 | 35% |
| Sum: | 301 | 289 | 12 | 4% | 69 | 23% |



A6 Towns Forum Report

K006 & K007 Desborough ASB

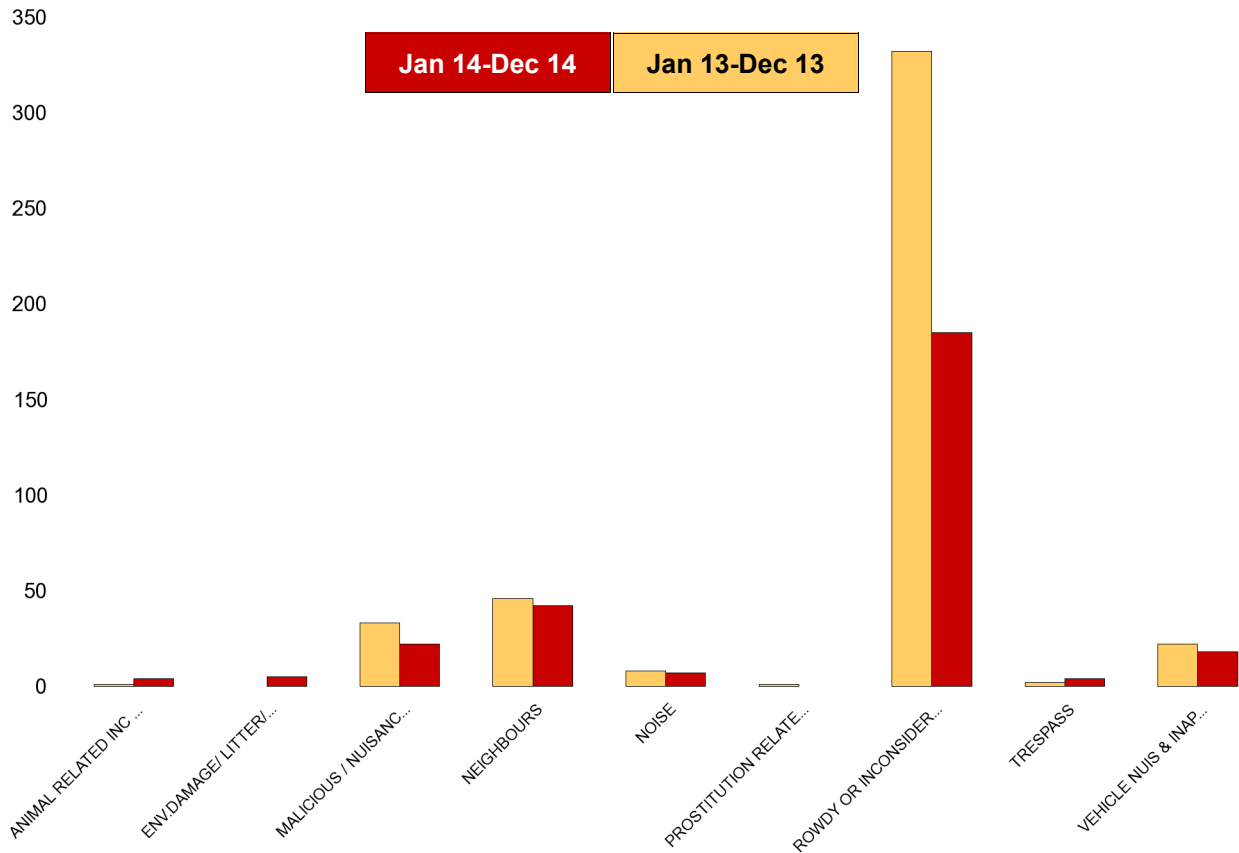
| NSIR Closing Cat. 1 Desc | No of Incidents (Jan 14-Dec 14) | No of Incidents (Jan 13-Dec 13) | +/- Incidents | % Change Incidents |
|--------------------------------|---------------------------------|---------------------------------|---------------|--------------------|
| ANIMAL RELATED INC ANTI-SOCIAL | 5 | 3 | 2 | 67% |
| ENV.DAMAGE/ LITTER/ NEEDLES | 11 | 6 | 5 | 83% |
| HATE INC (NOT NOTIFIABLE CRIME | 2 | 1 | 1 | 100% |
| MALICIOUS / NUISANCE COMMS | 29 | 36 | -7 | -19% |
| NEIGHBOURS | 55 | 55 | 0 | 0% |
| NOISE | 10 | 24 | -14 | -58% |
| PROSTITUTION RELATED ACTIVITY | 0 | 1 | -1 | -100% |
| ROWDY OR INCONSIDERATE BEHAV | 229 | 284 | -55 | -19% |
| TRESPASS | 5 | 0 | 5 | 0% |
| VEHICLE NUIS & INAPPROP VEH US | 37 | 42 | -5 | -12% |
| Sum: | 383 | 452 | -69 | -15% |



A6 Towns Forum Report

K012 Rothwell ASB

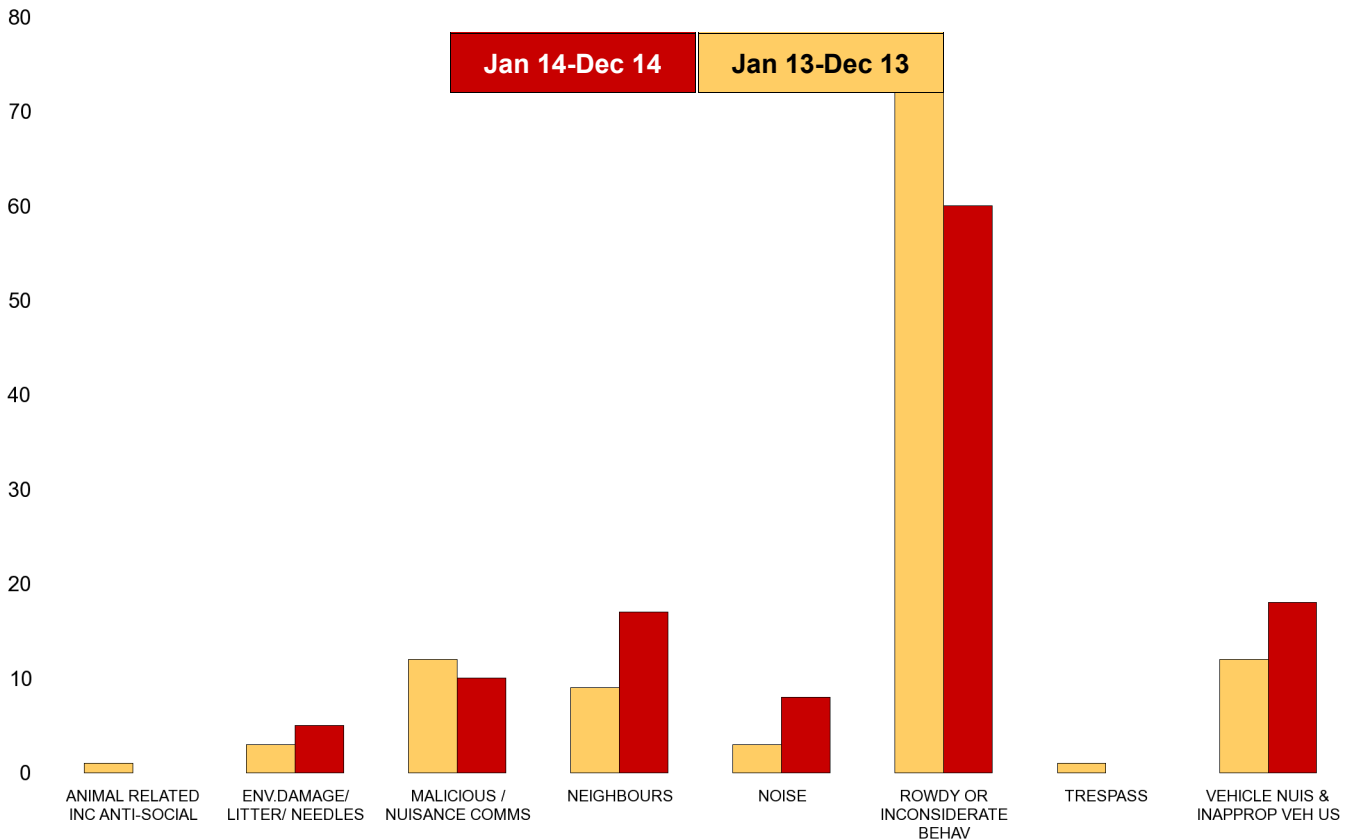
| NSIR Closing Cat. 1 Desc | No of Incidents (Jan 14-Dec 14) | No of Incidents (Jan 13-Dec 13) | +/- Incidents | % Change Incidents |
|--------------------------------|---------------------------------|---------------------------------|---------------|--------------------|
| ANIMAL RELATED INC ANTI-SOCIAL | 4 | 1 | 3 | 300% |
| ENV.DAMAGE/ LITTER/ NEEDLES | 5 | 0 | 5 | 0% |
| MALICIOUS / NUISANCE COMMS | 22 | 33 | -11 | -33% |
| NEIGHBOURS | 42 | 46 | -4 | -9% |
| NOISE | 7 | 8 | -1 | -13% |
| PROSTITUTION RELATED ACTIVITY | 0 | 1 | -1 | -100% |
| ROWDY OR INCONSIDERATE BEHAV | 185 | 332 | -147 | -44% |
| TRESPASS | 4 | 2 | 2 | 100% |
| VEHICLE NUIS & INAPPROP VEH US | 18 | 22 | -4 | -18% |
| Sum: | 287 | 445 | -158 | -36% |



A6 Towns Forum Report

K003 Barton ASB

| NSIR Closing Cat. 1 Desc | No of Incidents (Jan 14-Dec 14) | No of Incidents (Jan 13-Dec 13) | +/- Incidents | % Change Incidents |
|--------------------------------|---------------------------------|---------------------------------|---------------|--------------------|
| ANIMAL RELATED INC ANTI-SOCIAL | 0 | 1 | -1 | -100% |
| ENV.DAMAGE/ LITTER/ NEEDLES | 5 | 3 | 2 | 67% |
| MALICIOUS / NUISANCE COMMS | 10 | 12 | -2 | -17% |
| NEIGHBOURS | 17 | 9 | 8 | 89% |
| NOISE | 8 | 3 | 5 | 167% |
| ROWDY OR INCONSIDERATE BEHAV | 60 | 76 | -16 | -21% |
| TRESPASS | 0 | 1 | -1 | -100% |
| VEHICLE NUIS & INAPPROP VEH US | 18 | 12 | 6 | 50% |
| Sum: | 118 | 117 | 1 | 1% |



A6 Towns Forum Report

K005 Latimer ASB

| NSIR Closing Cat. 1 Desc | No of Incidents (Jan 14-Dec 14) | No of Incidents (Jan 13-Dec 13) | +/- Incidents | % Change Incidents |
|--------------------------------|---------------------------------|---------------------------------|---------------|--------------------|
| ANIMAL RELATED INC ANTI-SOCIAL | 5 | 6 | -1 | -17% |
| ENV.DAMAGE/ LITTER/ NEEDLES | 2 | 5 | -3 | -60% |
| MALICIOUS / NUISANCE COMMS | 34 | 32 | 2 | 6% |
| NEIGHBOURS | 58 | 29 | 29 | 100% |
| NOISE | 10 | 15 | -5 | -33% |
| ROWDY OR INCONSIDERATE BEHAV | 133 | 165 | -32 | -19% |
| TRESPASS | 1 | 2 | -1 | -50% |
| VEHICLE NUIS & INAPPROP VEH US | 25 | 20 | 5 | 25% |
| Sum: | 268 | 274 | -6 | -2% |

