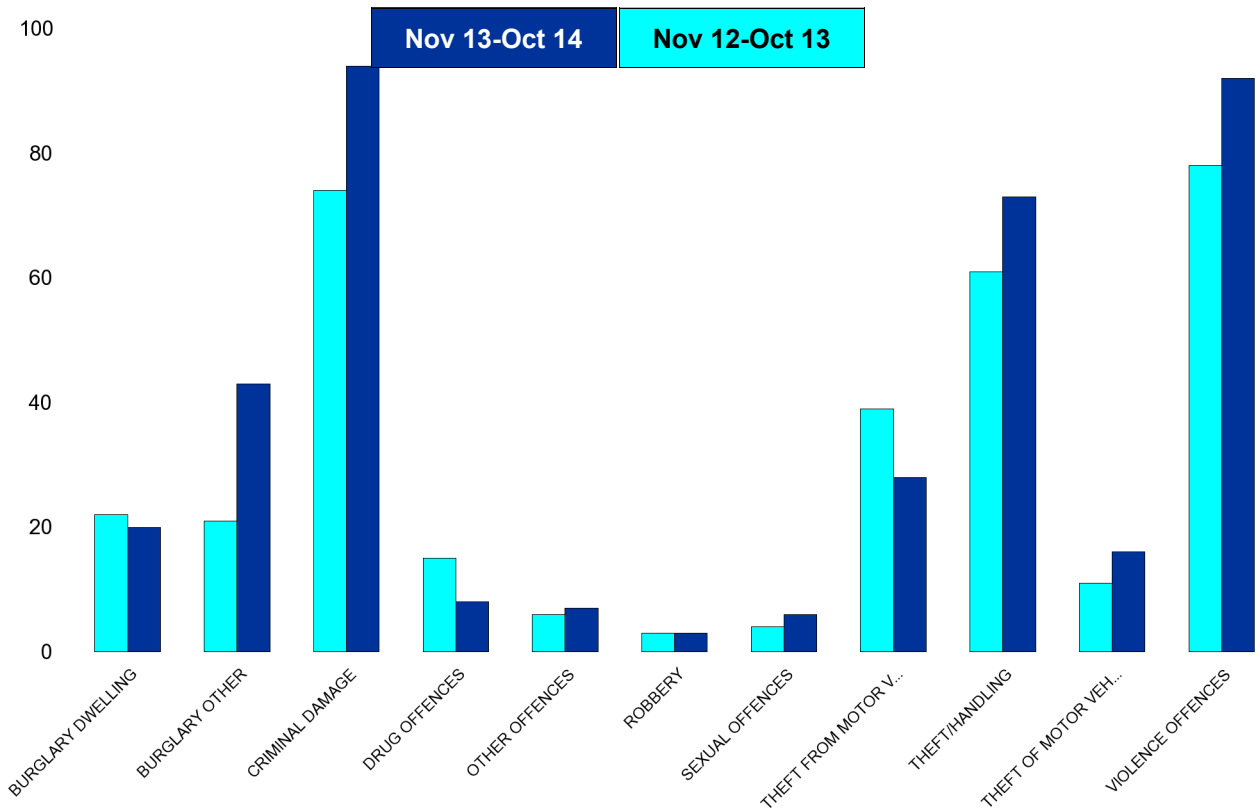


A6 Towns Forum Report

K006 & K007 Desborough - Crime

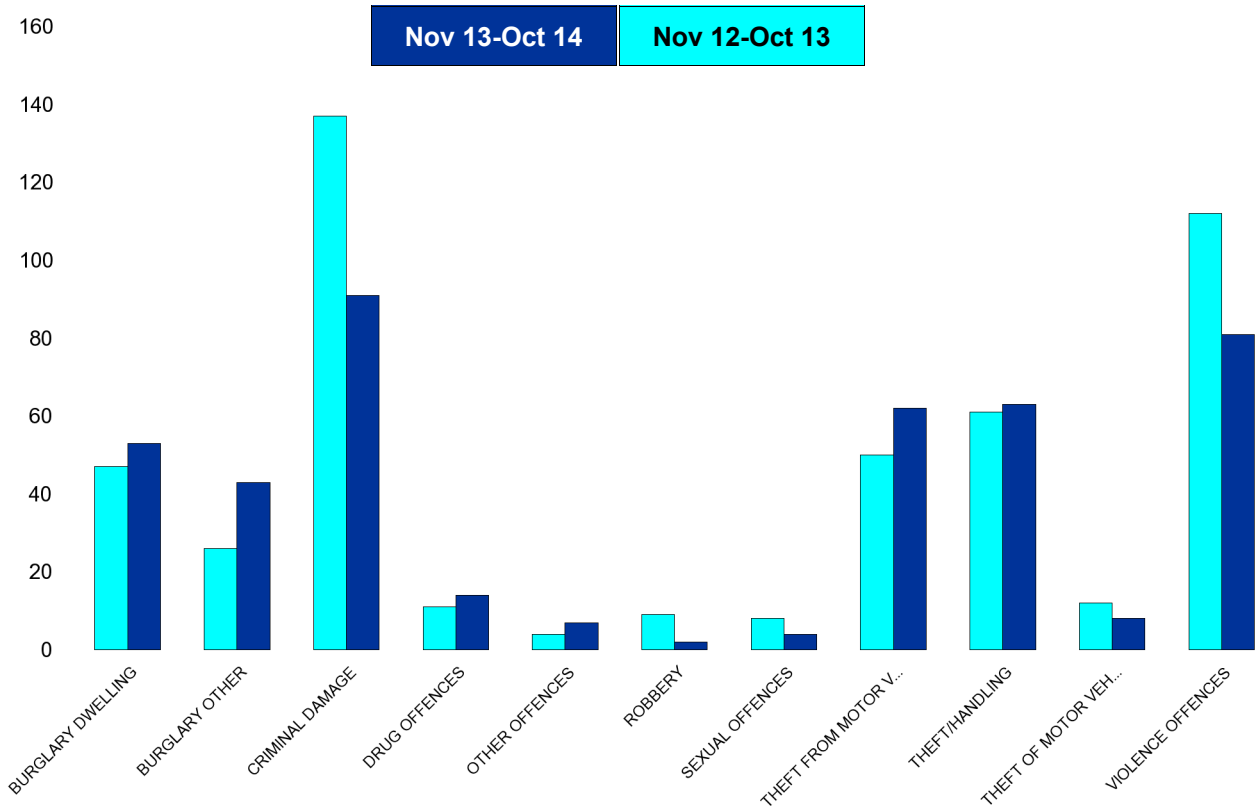
HO Group	No of Crimes (Nov 13-Oct 14)	No of Crimes (Nov 12-Oct 13)	+/- Crime	% Change	No of Resolved Outcome Crimes	Detection Rate (Past 12 Months)
BURGLARY DWELLING	20	22	-2	-9%	1	5%
BURGLARY OTHER	43	21	22	105%	0	0%
CRIMINAL DAMAGE	94	74	20	27%	11	12%
DRUG OFFENCES	8	15	-7	-47%	6	75%
OTHER OFFENCES	7	6	1	17%	8	114%
ROBBERY	3	3	0	0%	0	0%
SEXUAL OFFENCES	6	4	2	50%	0	0%
THEFT FROM MOTOR VEHICLES	28	39	-11	-28%	0	0%
THEFT/HANDLING	73	61	12	20%	15	21%
THEFT OF MOTOR VEHICLES	16	11	5	45%	3	19%
VIOLENCE OFFENCES	92	78	14	18%	35	38%
Sum:	390	334	56	17%	79	20%



A6 Towns Forum Report

K012 Rothwell - Crime

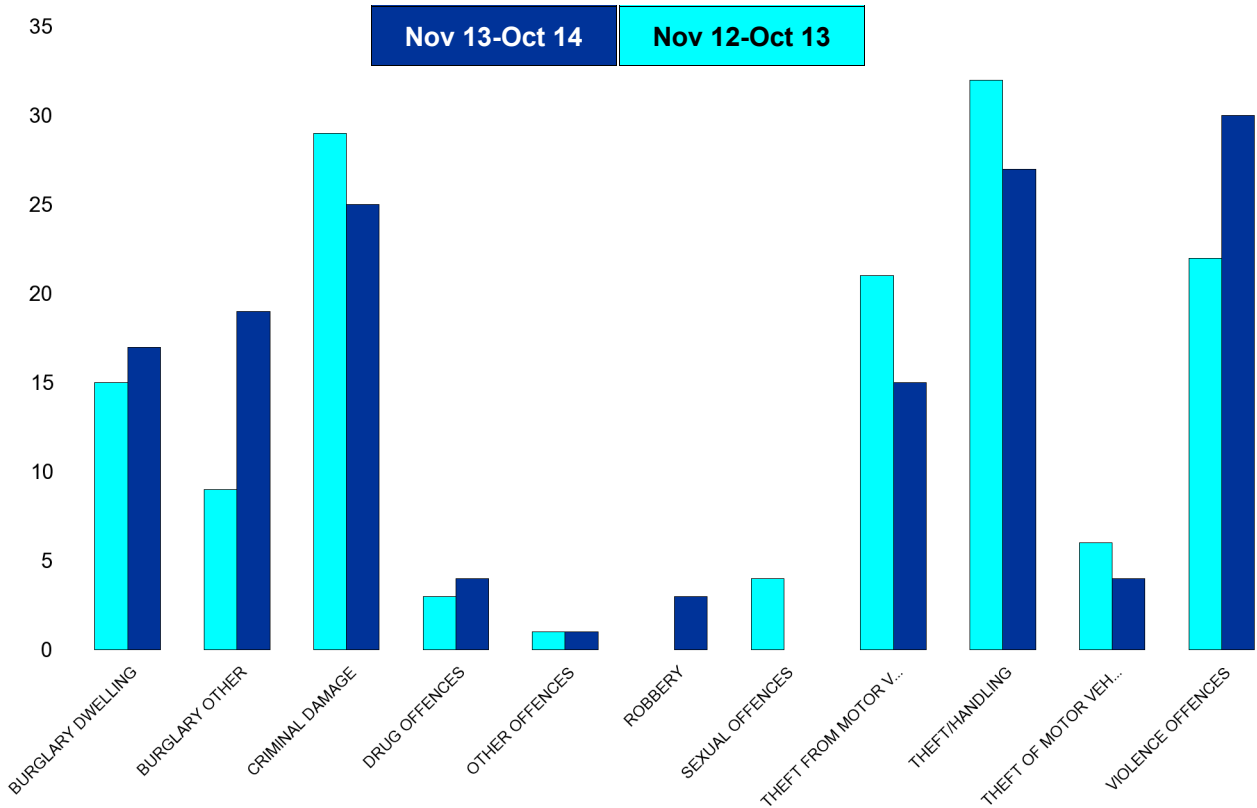
HO Group	No of Crimes (Nov 13-Oct 14)	No of Crimes (Nov 12-Oct 13)	+/- Crime	% Change	No of Resolved Outcome Crimes	Detection Rate (Past 12 Months)
BURGLARY DWELLING	53	47	6	13%	12	23%
BURGLARY OTHER	43	26	17	65%	3	7%
CRIMINAL DAMAGE	91	137	-46	-34%	13	14%
DRUG OFFENCES	14	11	3	27%	10	71%
OTHER OFFENCES	7	4	3	75%	5	71%
ROBBERY	2	9	-7	-78%	0	0%
SEXUAL OFFENCES	4	8	-4	-50%	1	25%
THEFT FROM MOTOR VEHICLES	62	50	12	24%	1	2%
THEFT/HANDLING	63	61	2	3%	26	41%
THEFT OF MOTOR VEHICLES	8	12	-4	-33%	3	38%
VIOLENCE OFFENCES	81	112	-31	-28%	28	35%
Sum:	428	477	-49	-10%	102	24%



A6 Towns Forum Report

K003 Barton - Crime

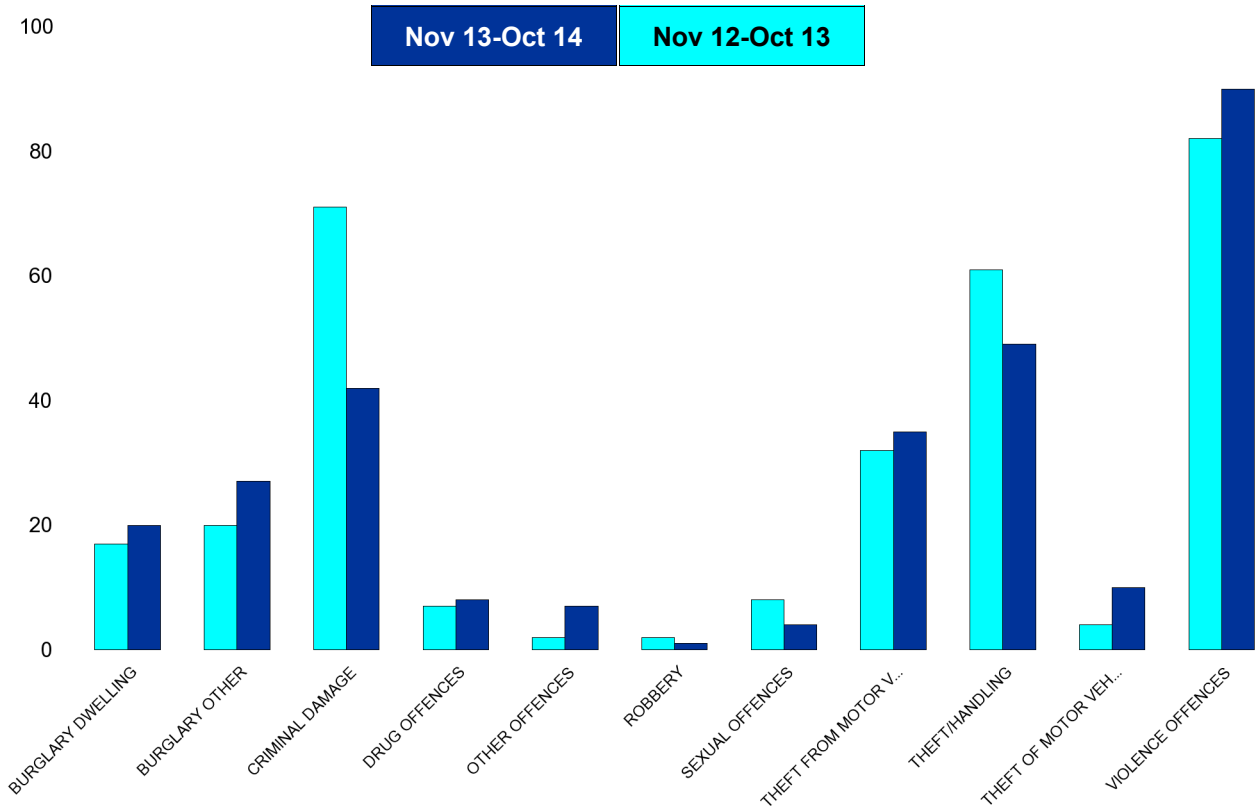
HO Group	No of Crimes (Nov 13-Oct 14)	No of Crimes (Nov 12-Oct 13)	+/- Crime	% Change	No of Resolved Outcome Crimes	Detection Rate (Past 12 Months)
BURGLARY DWELLING	17	15	2	13%	1	6%
BURGLARY OTHER	19	9	10	111%	0	0%
CRIMINAL DAMAGE	25	29	-4	-14%	3	12%
DRUG OFFENCES	4	3	1	33%	4	100%
OTHER OFFENCES	1	1	0	0%	0	0%
ROBBERY	3	0	3	0%	0	0%
SEXUAL OFFENCES	0	4	-4	-100%	1	0%
THEFT FROM MOTOR VEHICLES	15	21	-6	-29%	0	0%
THEFT/HANDLING	27	32	-5	-16%	6	22%
THEFT OF MOTOR VEHICLES	4	6	-2	-33%	1	25%
VIOLENCE OFFENCES	30	22	8	36%	12	40%
Sum:	145	142	3	2%	28	19%



A6 Towns Forum Report

K005 Burton Latimer - Crime

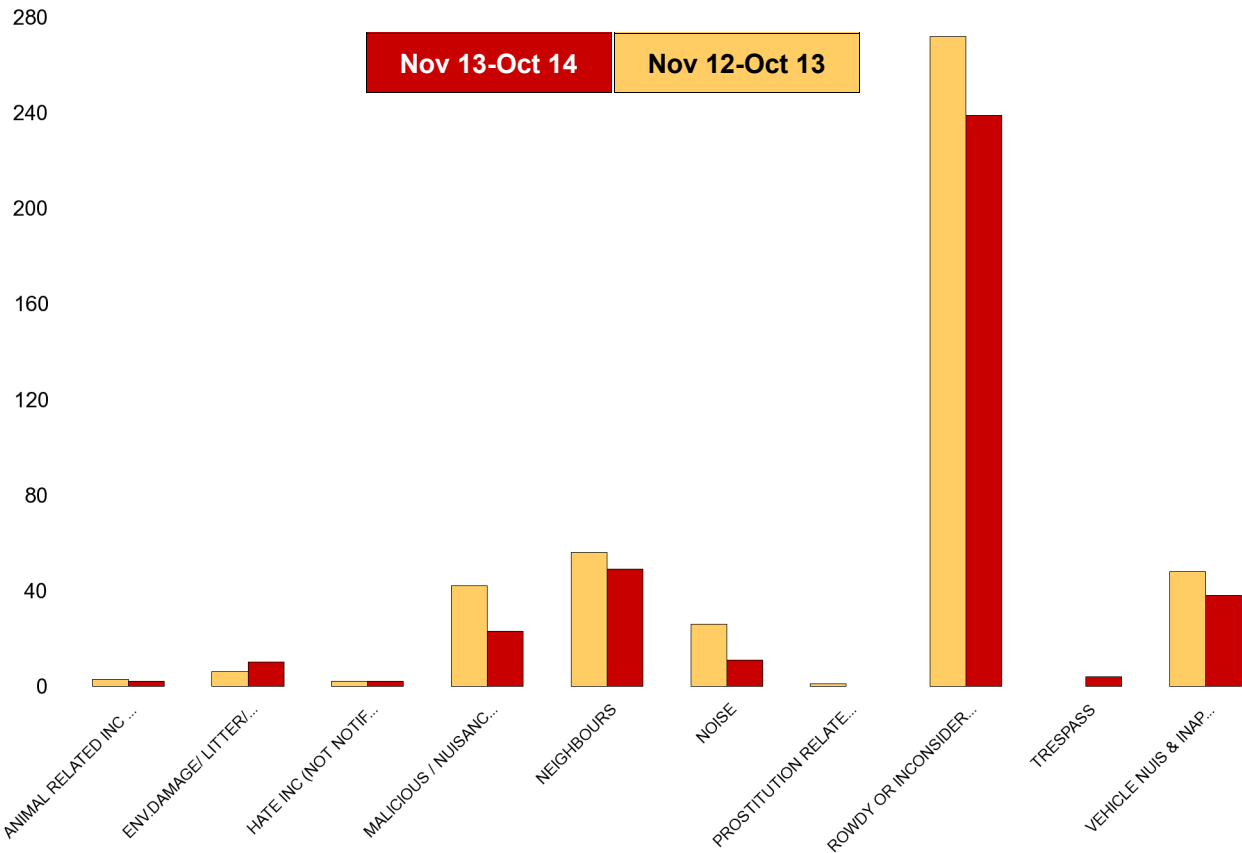
HO Group	No of Crimes (Nov 13-Oct 14)	No of Crimes (Nov 12-Oct 13)	+/- Crime	% Change	No of Resolved Outcome Crimes	Detection Rate (Past 12 Months)
BURGLARY DWELLING	20	17	3	18%	0	0%
BURGLARY OTHER	27	20	7	35%	1	4%
CRIMINAL DAMAGE	42	71	-29	-41%	3	7%
DRUG OFFENCES	8	7	1	14%	9	113%
OTHER OFFENCES	7	2	5	250%	3	43%
ROBBERY	1	2	-1	-50%	0	0%
SEXUAL OFFENCES	4	8	-4	-50%	2	50%
THEFT FROM MOTOR VEHICLES	35	32	3	9%	6	17%
THEFT/HANDLING	49	61	-12	-20%	13	27%
THEFT OF MOTOR VEHICLES	10	4	6	150%	2	20%
VIOLENCE OFFENCES	90	82	8	10%	31	34%
Sum:	293	306	-13	-4%	70	24%



A6 Towns Forum Report

K006 & K007 Desborough ASB

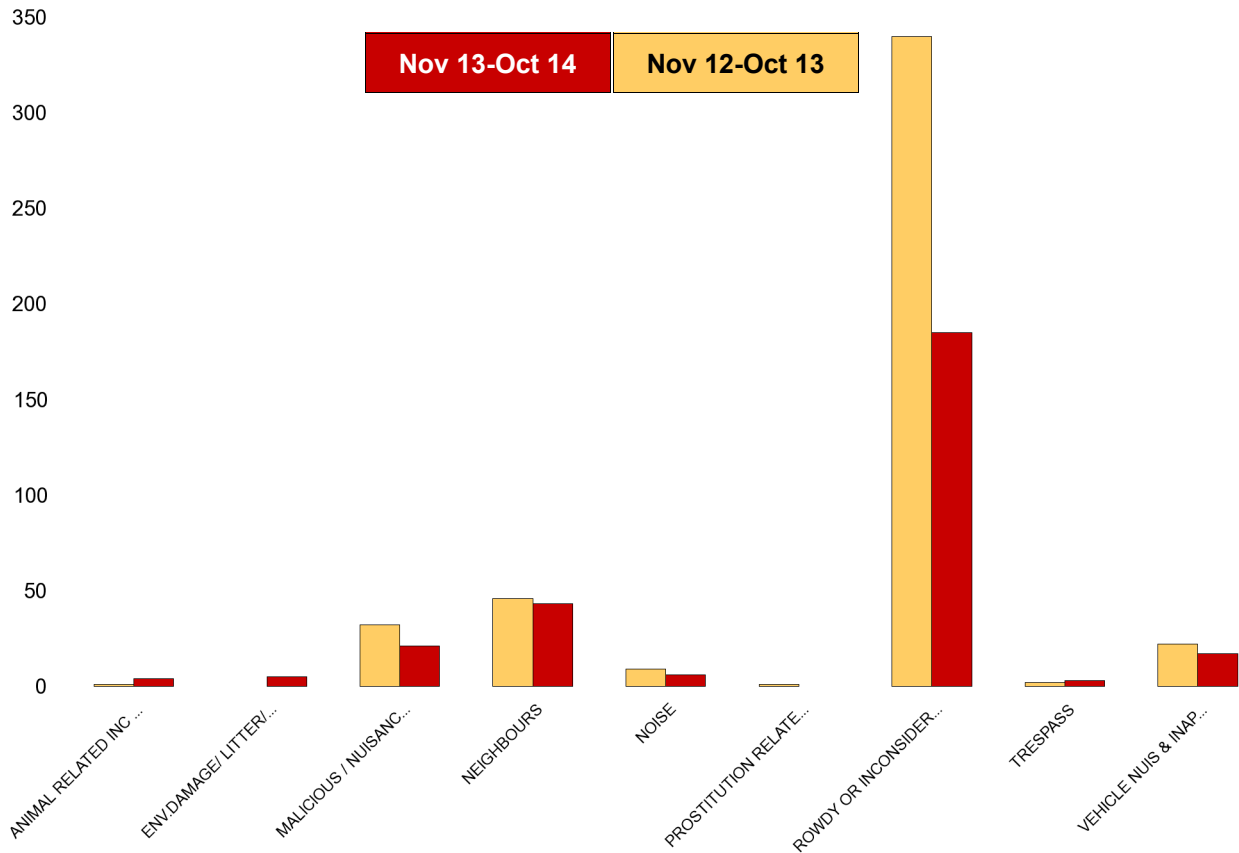
NSIR Closing Cat. 1 Desc	No of Incidents (Nov 13-Oct 14)	No of Incidents (Nov 12-Oct 13)	+/- Incidents	% Change Incidents
ANIMAL RELATED INC ANTI-SOCIAL	2	3	-1	-33%
ENV.DAMAGE/ LITTER/ NEEDLES	10	6	4	67%
HATE INC (NOT NOTIFIABLE CRIME)	2	2	0	0%
MALICIOUS / NUISANCE COMMS	23	42	-19	-45%
NEIGHBOURS	49	56	-7	-13%
NOISE	11	26	-15	-58%
PROSTITUTION RELATED ACTIVITY	0	1	-1	-100%
ROWDY OR INCONSIDERATE BEHAV	239	272	-33	-12%
TRESPASS	4	0	4	0%
VEHICLE NUIS & INAPPROP VEH US	38	48	-10	-21%
Sum:	378	456	-78	-17%



A6 Towns Forum Report

K012 Rothwell ASB

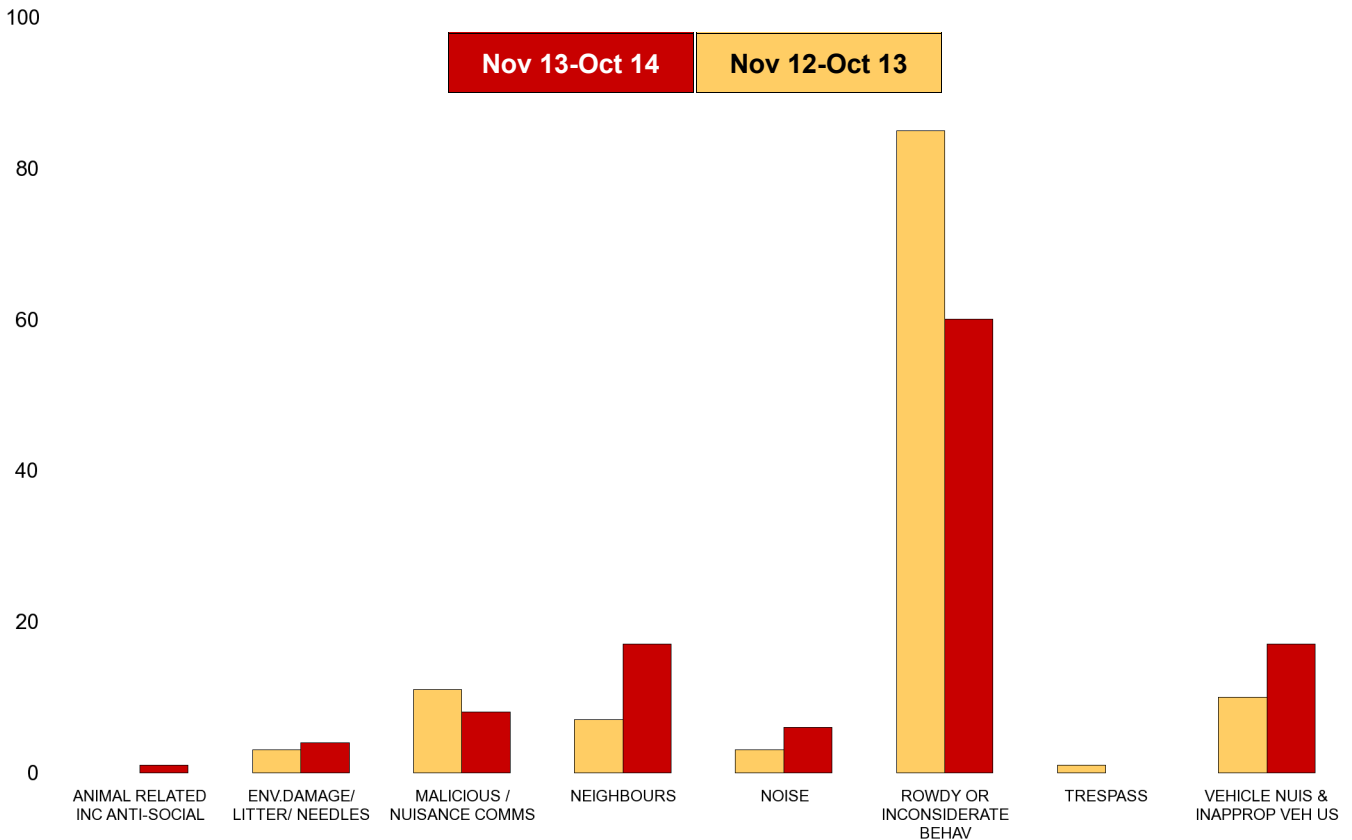
NSIR Closing Cat. 1 Desc	No of Incidents (Nov 13-Oct 14)	No of Incidents (Nov 12-Oct 13)	+/- Incidents	% Change Incidents
ANIMAL RELATED INC ANTI-SOCIAL	4	1	3	300%
ENV.DAMAGE/ LITTER/ NEEDLES	5	0	5	0%
MALICIOUS / NUISANCE COMMS	21	32	-11	-34%
NEIGHBOURS	43	46	-3	-7%
NOISE	6	9	-3	-33%
PROSTITUTION RELATED ACTIVITY	0	1	-1	-100%
ROWDY OR INCONSIDERATE BEHAV	185	340	-155	-46%
TRESPASS	3	2	1	50%
VEHICLE NUIS & INAPPROP VEH US	17	22	-5	-23%
Sum:	284	453	-169	-37%



A6 Towns Forum Report

K003 Barton ASB

NSIR Closing Cat. 1 Desc	No of Incidents (Nov 13-Oct 14)	No of Incidents (Nov 12-Oct 13)	+/- Incidents	% Change Incidents
ANIMAL RELATED INC ANTI-SOCIAL	1	0	1	0%
ENV.DAMAGE/ LITTER/ NEEDLES	4	3	1	33%
MALICIOUS / NUISANCE COMMS	8	11	-3	-27%
NEIGHBOURS	17	7	10	143%
NOISE	6	3	3	100%
ROWDY OR INCONSIDERATE BEHAV	60	85	-25	-29%
TRESPASS	0	1	-1	-100%
VEHICLE NUIS & INAPPROP VEH US	17	10	7	70%
Sum:	113	120	-7	-6%



A6 Towns Forum Report

K005 Latimer ASB

NSIR Closing Cat. 1 Desc	No of Incidents (Nov 13-Oct 14)	No of Incidents (Nov 12-Oct 13)	+/- Incidents	% Change Incidents
ANIMAL RELATED INC ANTI-SOCIAL	6	9	-3	-33%
ENV.DAMAGE/ LITTER/ NEEDLES	2	5	-3	-60%
MALICIOUS / NUISANCE COMMS	31	32	-1	-3%
NEIGHBOURS	58	28	30	107%
NOISE	9	18	-9	-50%
ROWDY OR INCONSIDERATE BEHAV	136	175	-39	-22%
TRESPASS	1	2	-1	-50%
VEHICLE NUIS & INAPPROP VEH US	22	17	5	29%
Sum:	265	286	-21	-7%

