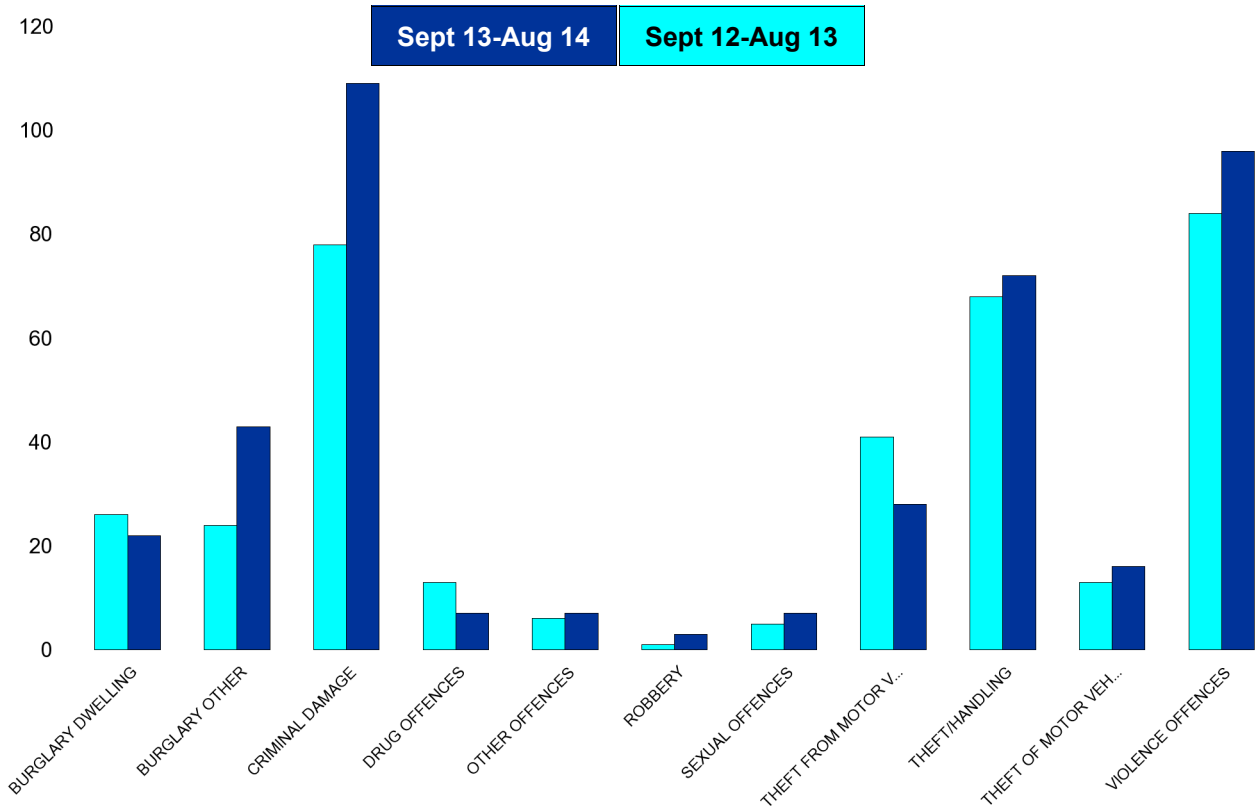


## A6 Towns Forum Report

### K006 & K007 Desborough - Crime

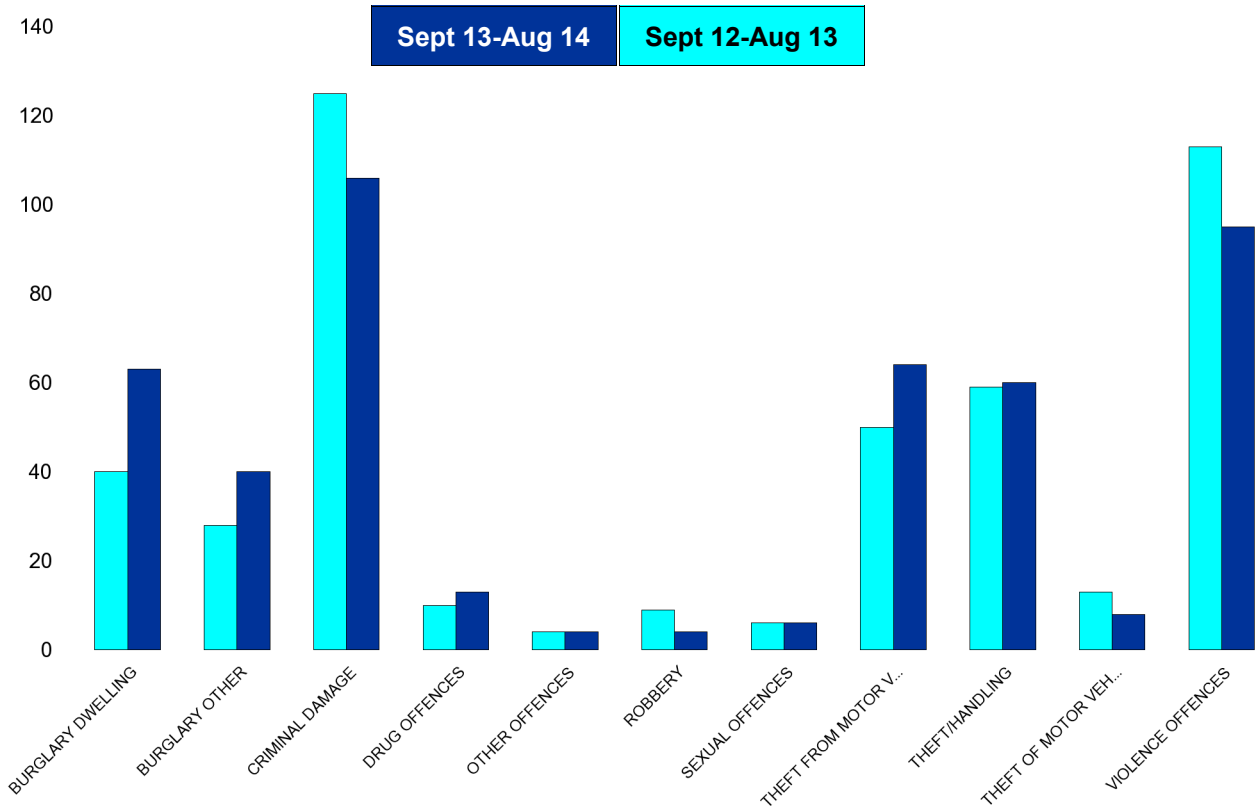
HO Group	No of Crimes (Sept 13-Aug 14)	No of Crimes (Sept 12-Aug 13)	+/- Crime	% Change	No of Resolved Outcome Crimes	Detection Rate (Past 12 Months)
BURGLARY DWELLING	22	26	-4	-15%	1	5%
BURGLARY OTHER	43	24	19	79%	0	0%
CRIMINAL DAMAGE	109	78	31	40%	12	11%
DRUG OFFENCES	7	13	-6	-46%	7	100%
OTHER OFFENCES	7	6	1	17%	9	129%
ROBBERY	3	1	2	200%	0	0%
SEXUAL OFFENCES	7	5	2	40%	0	0%
THEFT FROM MOTOR VEHICLES	28	41	-13	-32%	0	0%
THEFT/HANDLING	72	68	4	6%	15	21%
THEFT OF MOTOR VEHICLES	16	13	3	23%	4	25%
VIOLENCE OFFENCES	96	84	12	14%	40	42%
<b>Sum:</b>	<b>410</b>	<b>359</b>	<b>51</b>	<b>14%</b>	<b>88</b>	<b>21%</b>



## A6 Towns Forum Report

### K012 Rothwell - Crime

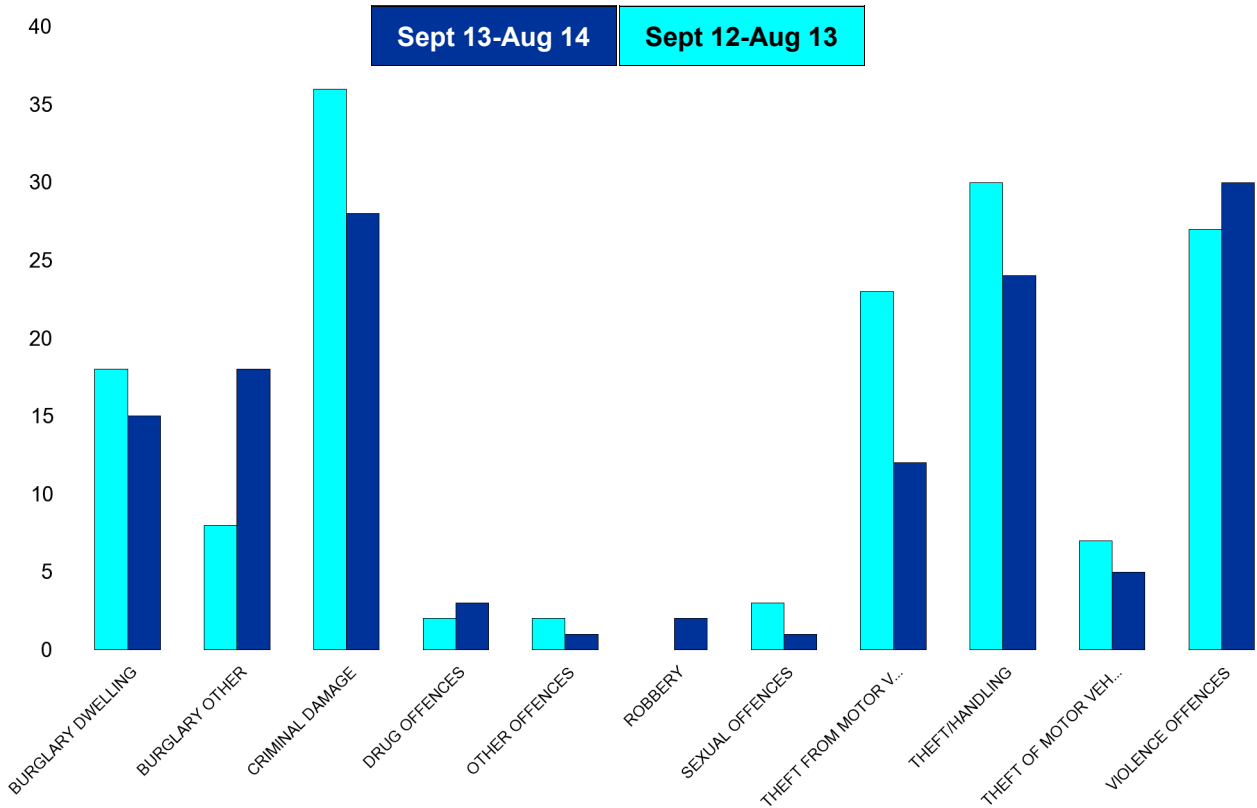
HO Group	No of Crimes (Sept 13-Aug 14)	No of Crimes (Sept 12-Aug 13)	+/- Crime	% Change	No of Resolved Outcome Crimes	Detection Rate (Past 12 Months)
BURGLARY DWELLING	63	40	23	58%	12	19%
BURGLARY OTHER	40	28	12	43%	3	8%
CRIMINAL DAMAGE	106	125	-19	-15%	15	14%
DRUG OFFENCES	13	10	3	30%	10	77%
OTHER OFFENCES	4	4	0	0%	3	75%
ROBBERY	4	9	-5	-56%	2	50%
SEXUAL OFFENCES	6	6	0	0%	0	0%
THEFT FROM MOTOR VEHICLES	64	50	14	28%	4	6%
THEFT/HANDLING	60	59	1	2%	20	33%
THEFT OF MOTOR VEHICLES	8	13	-5	-38%	3	38%
VIOLENCE OFFENCES	95	113	-18	-16%	32	34%
<b>Sum:</b>	<b>463</b>	<b>457</b>	<b>6</b>	<b>1%</b>	<b>104</b>	<b>22%</b>



## A6 Towns Forum Report

### K003 Barton - Crime

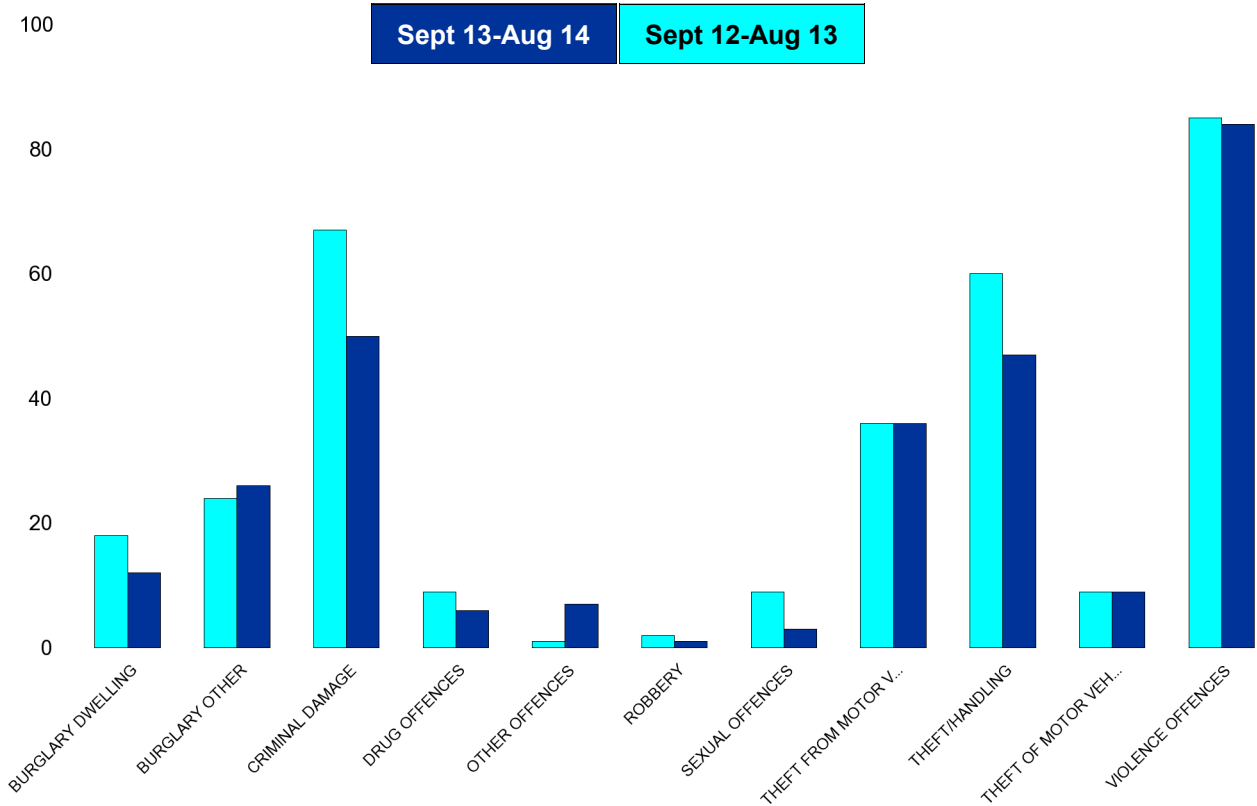
HO Group	No of Crimes (Sept 13-Aug 14)	No of Crimes (Sept 12-Aug 13)	+/- Crime	% Change	No of Resolved Outcome Crimes	Detection Rate (Past 12 Months)
BURGLARY DWELLING	15	18	-3	-17%	2	13%
BURGLARY OTHER	18	8	10	125%	0	0%
CRIMINAL DAMAGE	28	36	-8	-22%	3	11%
DRUG OFFENCES	3	2	1	50%	3	100%
OTHER OFFENCES	1	2	-1	-50%	0	0%
ROBBERY	2	0	2	0%	0	0%
SEXUAL OFFENCES	1	3	-2	-67%	1	100%
THEFT FROM MOTOR VEHICLES	12	23	-11	-48%	1	8%
THEFT/HANDLING	24	30	-6	-20%	5	21%
THEFT OF MOTOR VEHICLES	5	7	-2	-29%	1	20%
VIOLENCE OFFENCES	30	27	3	11%	12	40%
<b>Sum:</b>	<b>139</b>	<b>156</b>	<b>-17</b>	<b>-11%</b>	<b>28</b>	<b>20%</b>



## A6 Towns Forum Report

### K005 Burton Latimer - Crime

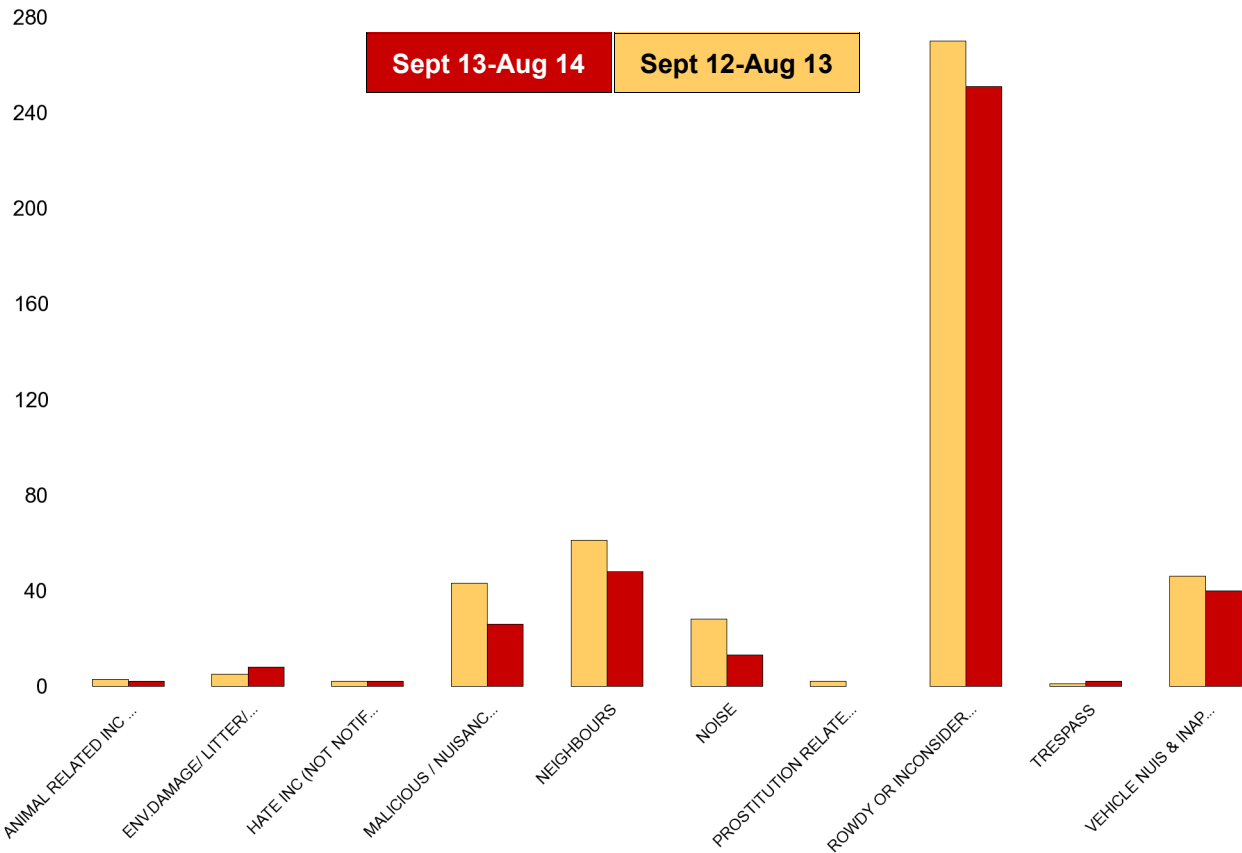
HO Group	No of Crimes (Sept 13-Aug 14)	No of Crimes (Sept 12-Aug 13)	+/- Crime	% Change	No of Resolved Outcome Crimes	Detection Rate (Past 12 Months)
BURGLARY DWELLING	12	18	-6	-33%	0	0%
BURGLARY OTHER	26	24	2	8%	1	4%
CRIMINAL DAMAGE	50	67	-17	-25%	3	6%
DRUG OFFENCES	6	9	-3	-33%	6	100%
OTHER OFFENCES	7	1	6	600%	2	29%
ROBBERY	1	2	-1	-50%	0	0%
SEXUAL OFFENCES	3	9	-6	-67%	2	67%
THEFT FROM MOTOR VEHICLES	36	36	0	0%	6	17%
THEFT/HANDLING	47	60	-13	-22%	16	34%
THEFT OF MOTOR VEHICLES	9	9	0	0%	3	33%
VIOLENCE OFFENCES	84	85	-1	-1%	34	40%
<b>Sum:</b>	<b>281</b>	<b>320</b>	<b>-39</b>	<b>-12%</b>	<b>73</b>	<b>26%</b>



# A6 Towns Forum Report

## K006 & K007 Desborough ASB

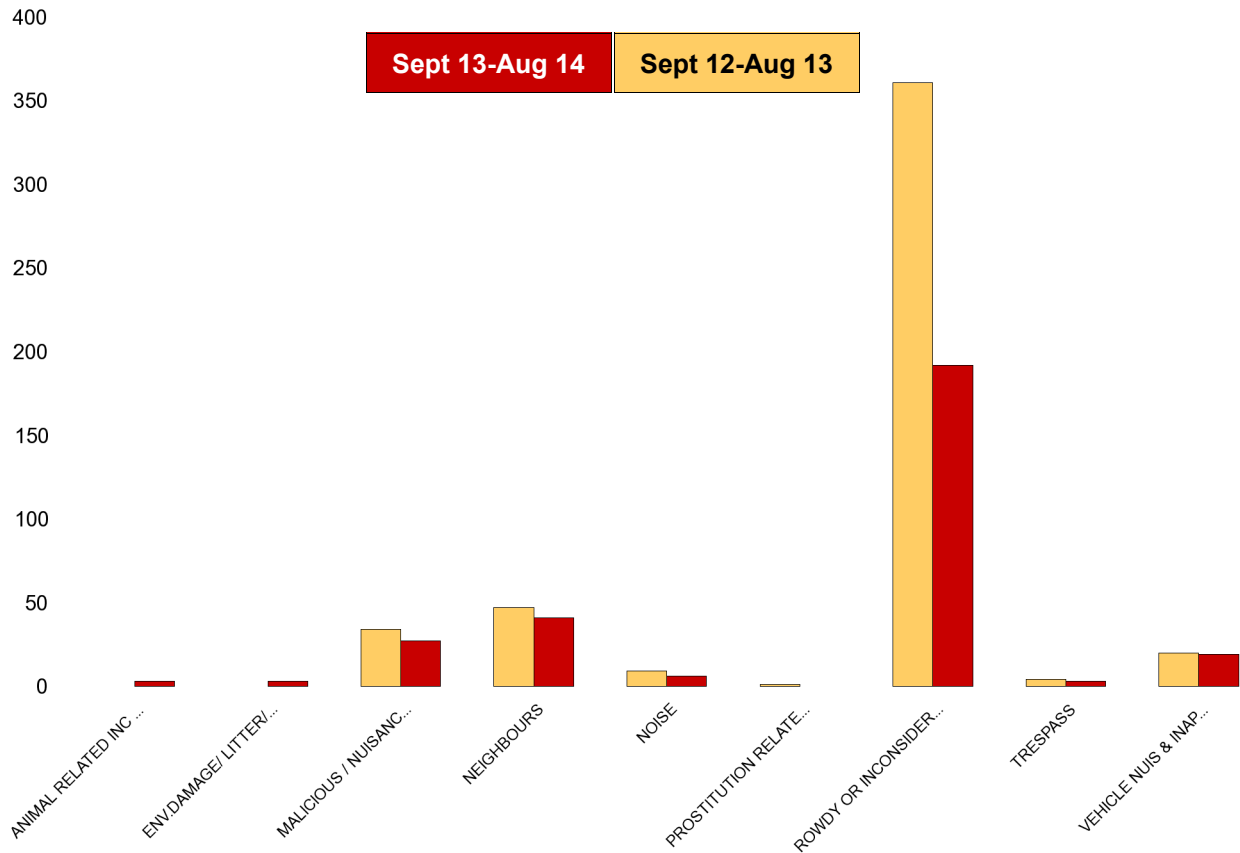
NSIR Closing Cat. 1 Desc	No of Incidents (Sept 13-Aug 14)	No of Incidents (Sept 12-Aug 13)	+/- Incidents	% Change Incidents
ANIMAL RELATED INC ANTI-SOCIAL	2	3	-1	-33%
ENV.DAMAGE/ LITTER/ NEEDLES	8	5	3	60%
HATE INC (NOT NOTIFIABLE CRIME)	2	2	0	0%
MALICIOUS / NUISANCE COMMS	26	43	-17	-40%
NEIGHBOURS	48	61	-13	-21%
NOISE	13	28	-15	-54%
PROSTITUTION RELATED ACTIVITY	0	2	-2	-100%
ROWDY OR INCONSIDERATE BEHAV	251	270	-19	-7%
TRESPASS	2	1	1	100%
VEHICLE NUIS & INAPPROP VEH US	40	46	-6	-13%
<b>Sum:</b>	<b>392</b>	<b>461</b>	<b>-69</b>	<b>-15%</b>



## A6 Towns Forum Report

### K012 Rothwell ASB

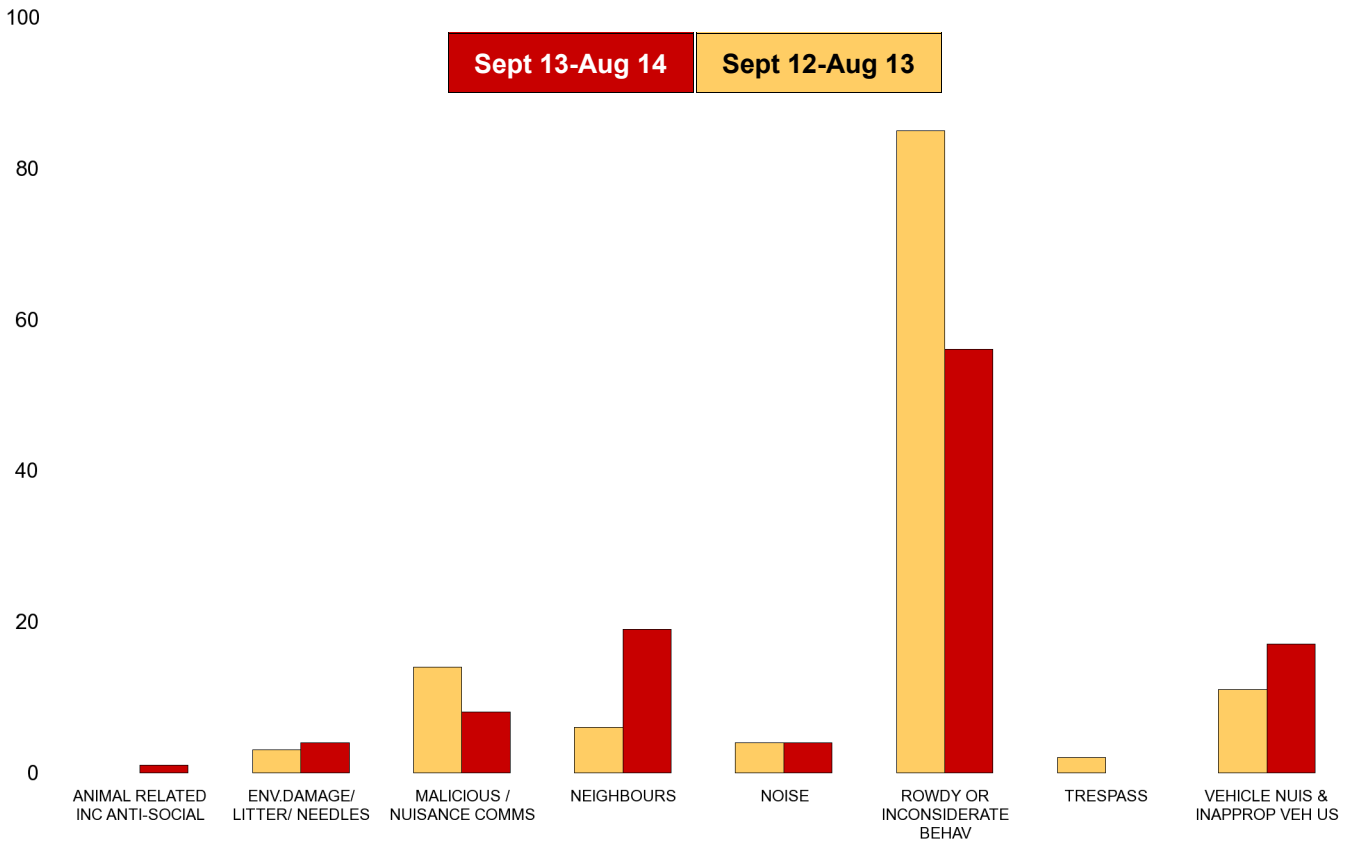
NSIR Closing Cat. 1 Desc	No of Incidents (Sept 13-Aug 14)	No of Incidents (Sept 12-Aug 13)	+/- Incidents	% Change Incidents
ANIMAL RELATED INC ANTI-SOCIAL	3	0	3	0%
ENV.DAMAGE/ LITTER/ NEEDLES	3	0	3	0%
MALICIOUS / NUISANCE COMMS	27	34	-7	-21%
NEIGHBOURS	41	47	-6	-13%
NOISE	6	9	-3	-33%
PROSTITUTION RELATED ACTIVITY	0	1	-1	-100%
ROWDY OR INCONSIDERATE BEHAV	192	361	-169	-47%
TRESPASS	3	4	-1	-25%
VEHICLE NUIS & INAPPROP VEH US	19	20	-1	-5%
<b>Sum:</b>	<b>294</b>	<b>476</b>	<b>-182</b>	<b>-38%</b>



## A6 Towns Forum Report

### K003 Barton ASB

NSIR Closing Cat. 1 Desc	No of Incidents (Sept 13-Aug 14)	No of Incidents (Sept 12-Aug 13)	+/- Incidents	% Change Incidents
ANIMAL RELATED INC ANTI-SOCIAL	1	0	1	0%
ENV.DAMAGE/ LITTER/ NEEDLES	4	3	1	33%
MALICIOUS / NUISANCE COMMS	8	14	-6	-43%
NEIGHBOURS	19	6	13	217%
NOISE	4	4	0	0%
ROWDY OR INCONSIDERATE BEHAV	56	85	-29	-34%
TRESPASS	0	2	-2	-100%
VEHICLE NUIS & INAPPROP VEH US	17	11	6	55%
<b>Sum:</b>	<b>109</b>	<b>125</b>	<b>-16</b>	<b>-13%</b>



## A6 Towns Forum Report

### K005 Latimer ASB

NSIR Closing Cat. 1 Desc	No of Incidents (Sept 13-Aug 14)	No of Incidents (Sept 12-Aug 13)	+/- Incidents	% Change Incidents
ANIMAL RELATED INC ANTI-SOCIAL	5	8	-3	-38%
ENV.DAMAGE/ LITTER/ NEEDLES	2	7	-5	-71%
MALICIOUS / NUISANCE COMMS	32	33	-1	-3%
NEIGHBOURS	50	28	22	79%
NOISE	9	22	-13	-59%
ROWDY OR INCONSIDERATE BEHAV	152	173	-21	-12%
TRESPASS	3	1	2	200%
VEHICLE NUIS & INAPPROP VEH US	19	18	1	6%
<b>Sum:</b>	<b>272</b>	<b>290</b>	<b>-18</b>	<b>-6%</b>

