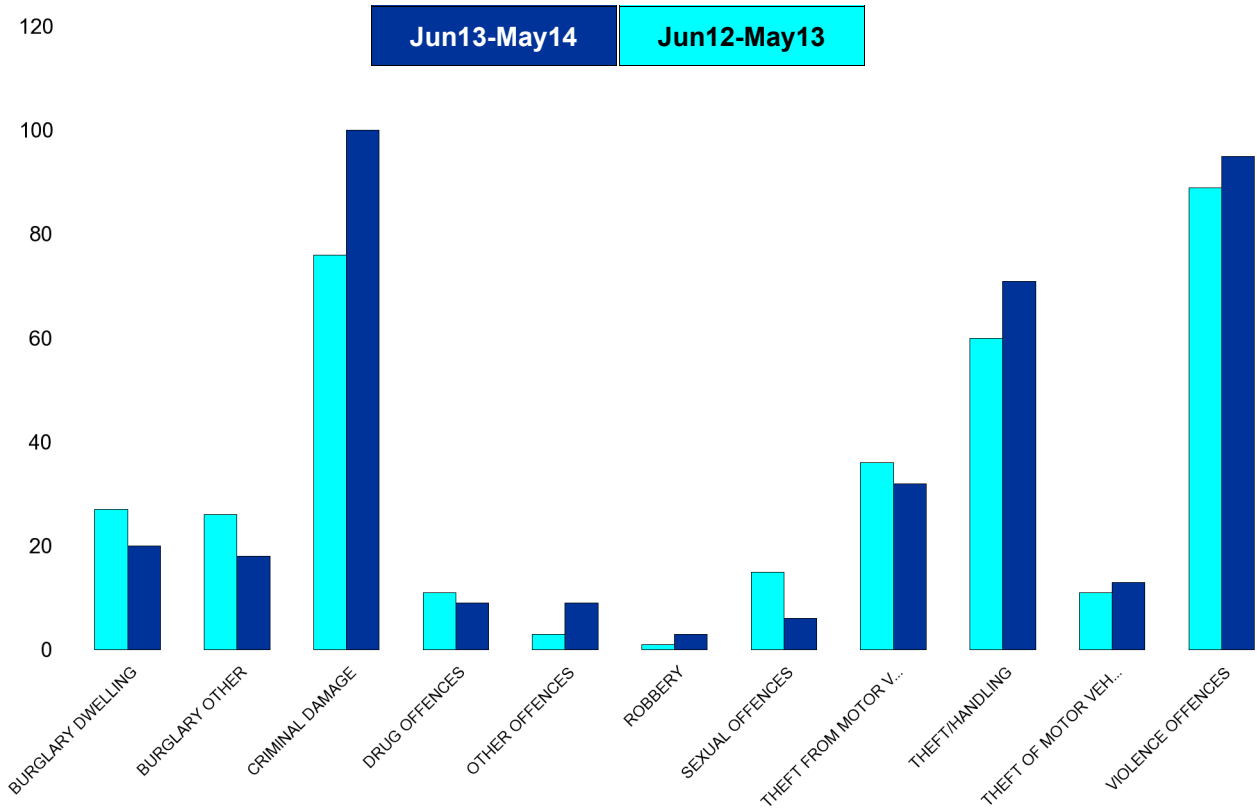


A6 Towns Forum Report

K006 & K007 Desborough - Crime

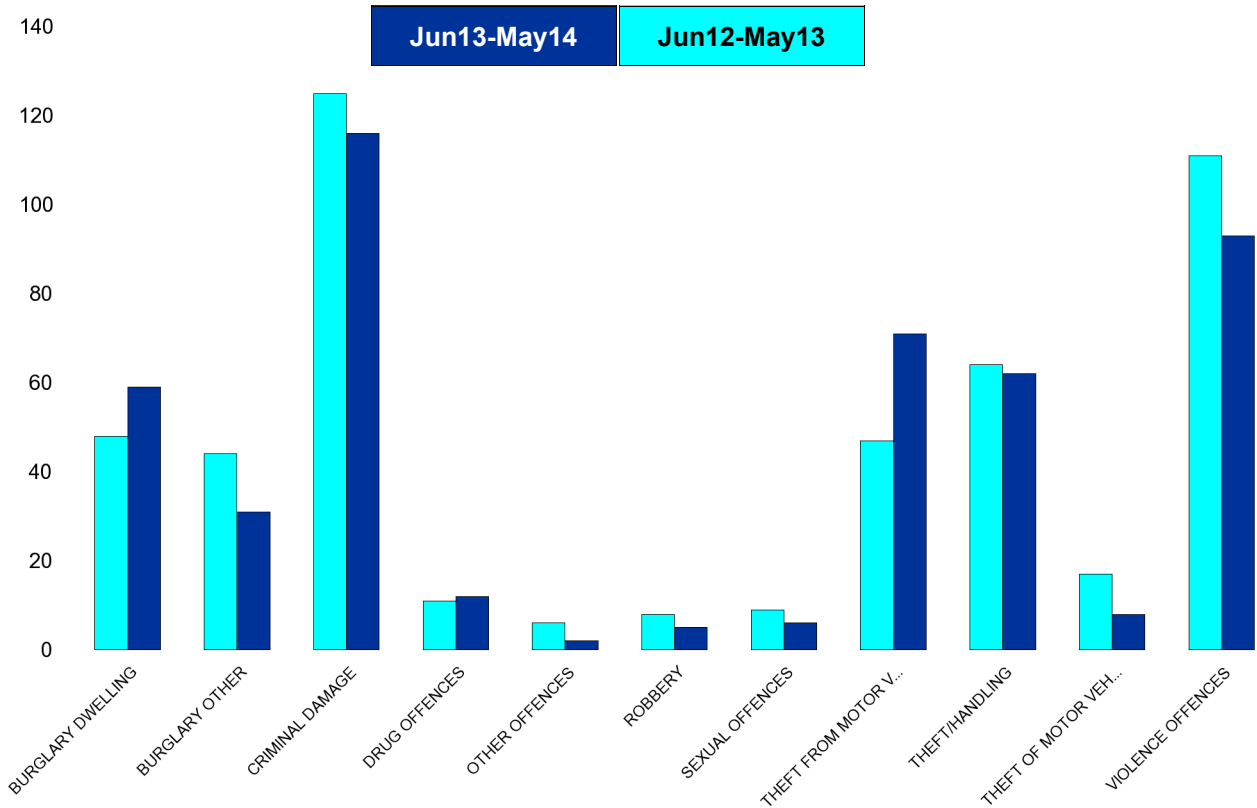
HO Group	No of Crimes (June 13-May 14)	No of Crimes (Jun12-May13)	+/- Crime	% Change	No of Resolved Outcome Crimes	Detection Rate (Past 12 Months)
BURGLARY DWELLING	20	27	-7	-26%	0	0%
BURGLARY OTHER	18	26	-8	-31%	0	0%
CRIMINAL DAMAGE	100	76	24	32%	0	0%
DRUG OFFENCES	9	11	-2	-18%	0	0%
OTHER OFFENCES	9	3	6	200%	0	0%
ROBBERY	3	1	2	200%	0	0%
SEXUAL OFFENCES	6	15	-9	-60%	0	0%
THEFT FROM MOTOR VEHICLES	32	36	-4	-11%	0	0%
THEFT/HANDLING	71	60	11	18%	0	0%
THEFT OF MOTOR VEHICLES	13	11	2	18%	0	0%
VIOLENCE OFFENCES	95	89	6	7%	0	0%
Sum:	376	355	21	6%	0	0%



A6 Towns Forum Report

K012 Rothwell - Crime

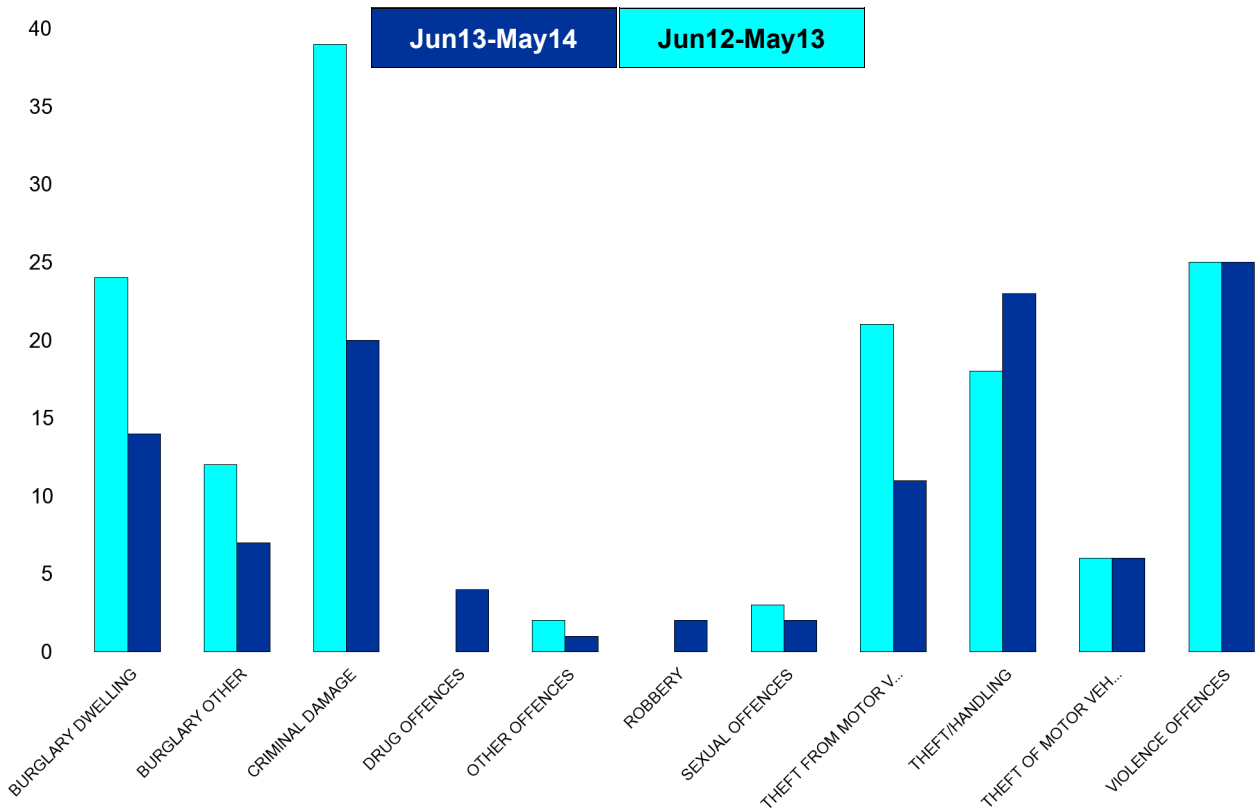
HO Group	No of Crimes (June 13-May 14)	No of Crimes (Jun12-May13)	+/- Crime	% Change	No of Resolved Outcome Crimes	Detection Rate (Past 12 Months)
BURGLARY DWELLING	59	48	11	23%	0	0%
BURGLARY OTHER	31	44	-13	-30%	0	0%
CRIMINAL DAMAGE	116	125	-9	-7%	0	0%
DRUG OFFENCES	12	11	1	9%	0	0%
OTHER OFFENCES	2	6	-4	-67%	0	0%
ROBBERY	5	8	-3	-38%	0	0%
SEXUAL OFFENCES	6	9	-3	-33%	0	0%
THEFT FROM MOTOR VEHICLES	71	47	24	51%	0	0%
THEFT/HANDLING	62	64	-2	-3%	0	0%
THEFT OF MOTOR VEHICLES	8	17	-9	-53%	0	0%
VIOLENCE OFFENCES	93	111	-18	-16%	0	0%
Sum:	465	490	-25	-5%	0	0%



A6 Towns Forum Report

K003 Barton - Crime

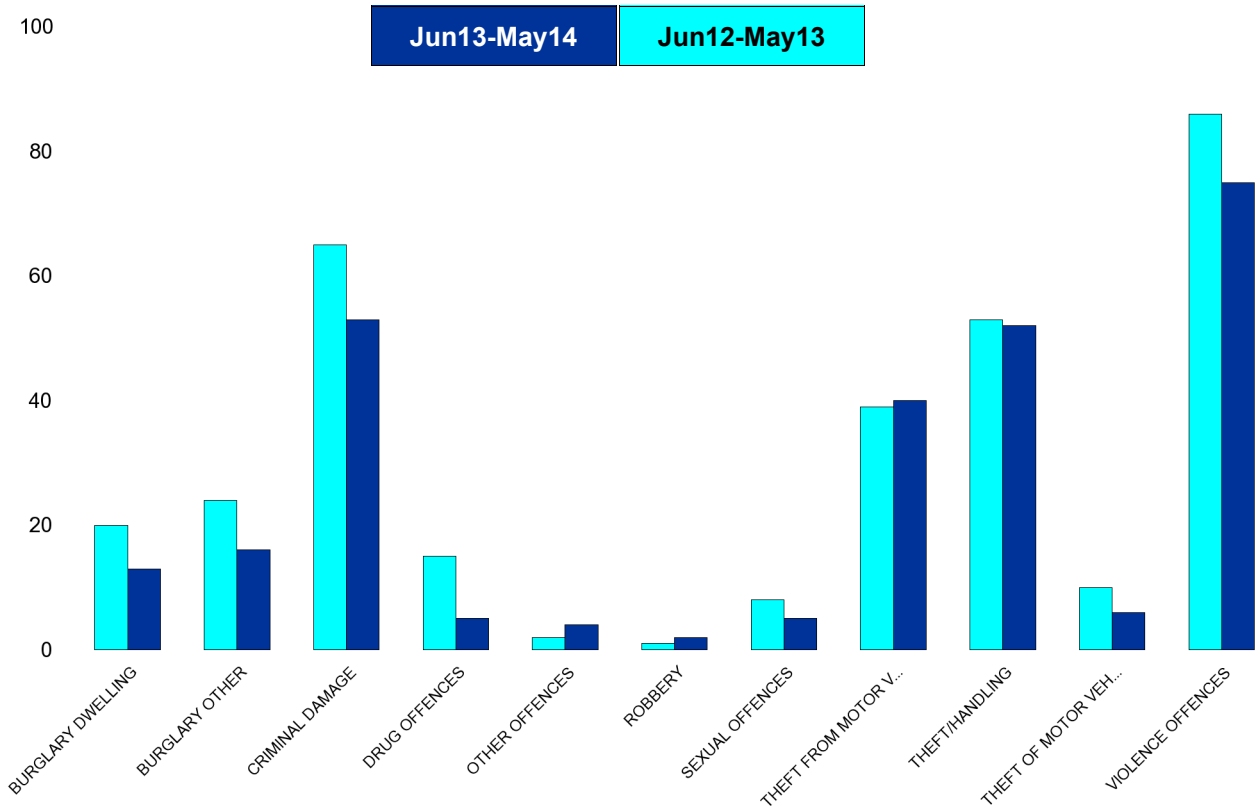
HO Group	No of Crimes (June 13-May 14)	No of Crimes (Jun12-May13)	+/- Crime	% Change	No of Resolved Outcome Crimes	Detection Rate (Past 12 Months)
BURGLARY DWELLING	14	24	-10	-42%	0	0%
BURGLARY OTHER	7	12	-5	-42%	0	0%
CRIMINAL DAMAGE	20	39	-19	-49%	0	0%
DRUG OFFENCES	4	0	4	0%	0	0%
OTHER OFFENCES	1	2	-1	-50%	0	0%
ROBBERY	2	0	2	0%	0	0%
SEXUAL OFFENCES	2	3	-1	-33%	0	0%
THEFT FROM MOTOR VEHICLES	11	21	-10	-48%	0	0%
THEFT/HANDLING	23	18	5	28%	0	0%
THEFT OF MOTOR VEHICLES	6	6	0	0%	0	0%
VIOLENCE OFFENCES	25	25	0	0%	0	0%
Sum:	115	150	-35	-23%	0	0%



A6 Towns Forum Report

K005 Burton Latimer - Crime

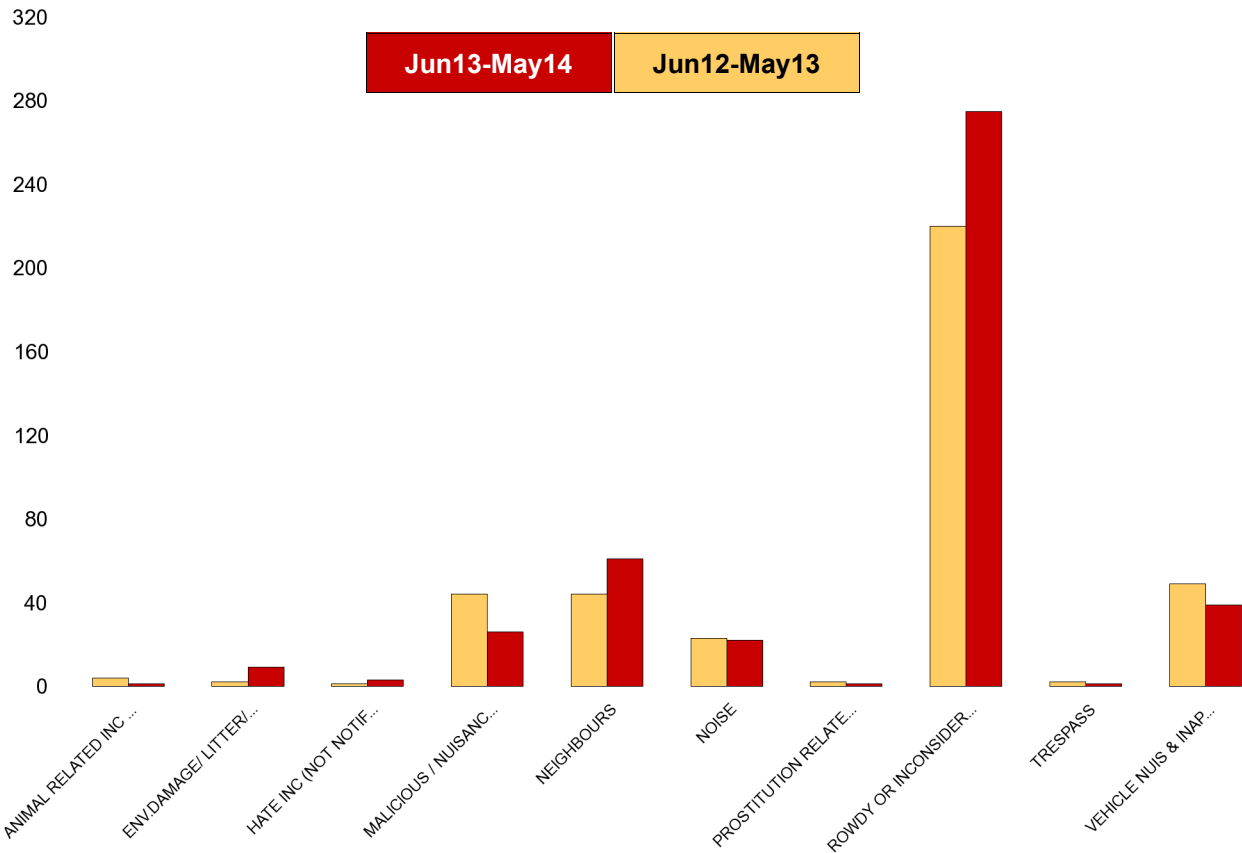
HO Group	No of Crimes (June 13-May 14)	No of Crimes (Jun12-May13)	+/- Crime	% Change	No of Resolved Outcome Crimes	Detection Rate (Past 12 Months)
BURGLARY DWELLING	13	20	-7	-35%	0	0%
BURGLARY OTHER	16	24	-8	-33%	0	0%
CRIMINAL DAMAGE	53	65	-12	-18%	0	0%
DRUG OFFENCES	5	15	-10	-67%	0	0%
OTHER OFFENCES	4	2	2	100%	0	0%
ROBBERY	2	1	1	100%	0	0%
SEXUAL OFFENCES	5	8	-3	-38%	0	0%
THEFT FROM MOTOR VEHICLES	40	39	1	3%	0	0%
THEFT/HANDLING	52	53	-1	-2%	0	0%
THEFT OF MOTOR VEHICLES	6	10	-4	-40%	0	0%
VIOLENCE OFFENCES	75	86	-11	-13%	0	0%
Sum:	271	323	-52	-16%	0	0%



A6 Towns Forum Report

K006 & K007 Desborough ASB

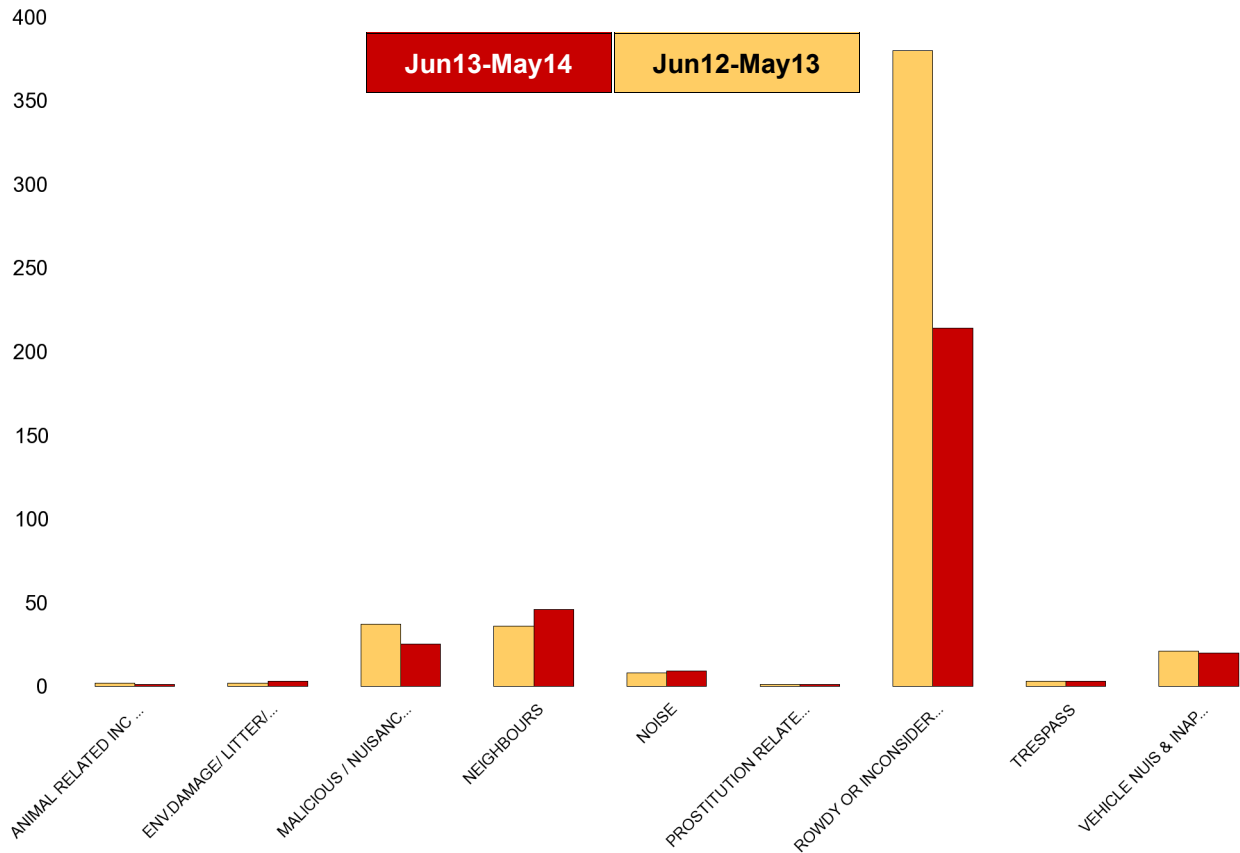
NSIR Closing Cat. 1 Desc	No of Incidents (Jun13-May14)	No of Incidents (Jun12-May13)	+/- Incidents	% Change Incidents
ANIMAL RELATED INC ANTI-SOCIAL	1	4	-3	-75%
ENV.DAMAGE/ LITTER/ NEEDLES	9	2	7	350%
HATE INC (NOT NOTIFIABLE CRIME	3	1	2	200%
MALICIOUS / NUISANCE COMMS	26	44	-18	-41%
NEIGHBOURS	61	44	17	39%
NOISE	22	23	-1	-4%
PROSTITUTION RELATED ACTIVITY	1	2	-1	-50%
ROWDY OR INCONSIDERATE BEHAV	275	220	55	25%
TRESPASS	1	2	-1	-50%
VEHICLE NUIS & INAPPROP VEH US	39	49	-10	-20%
Sum:	438	391	47	12%



A6 Towns Forum Report

K012 Rothwell ASB

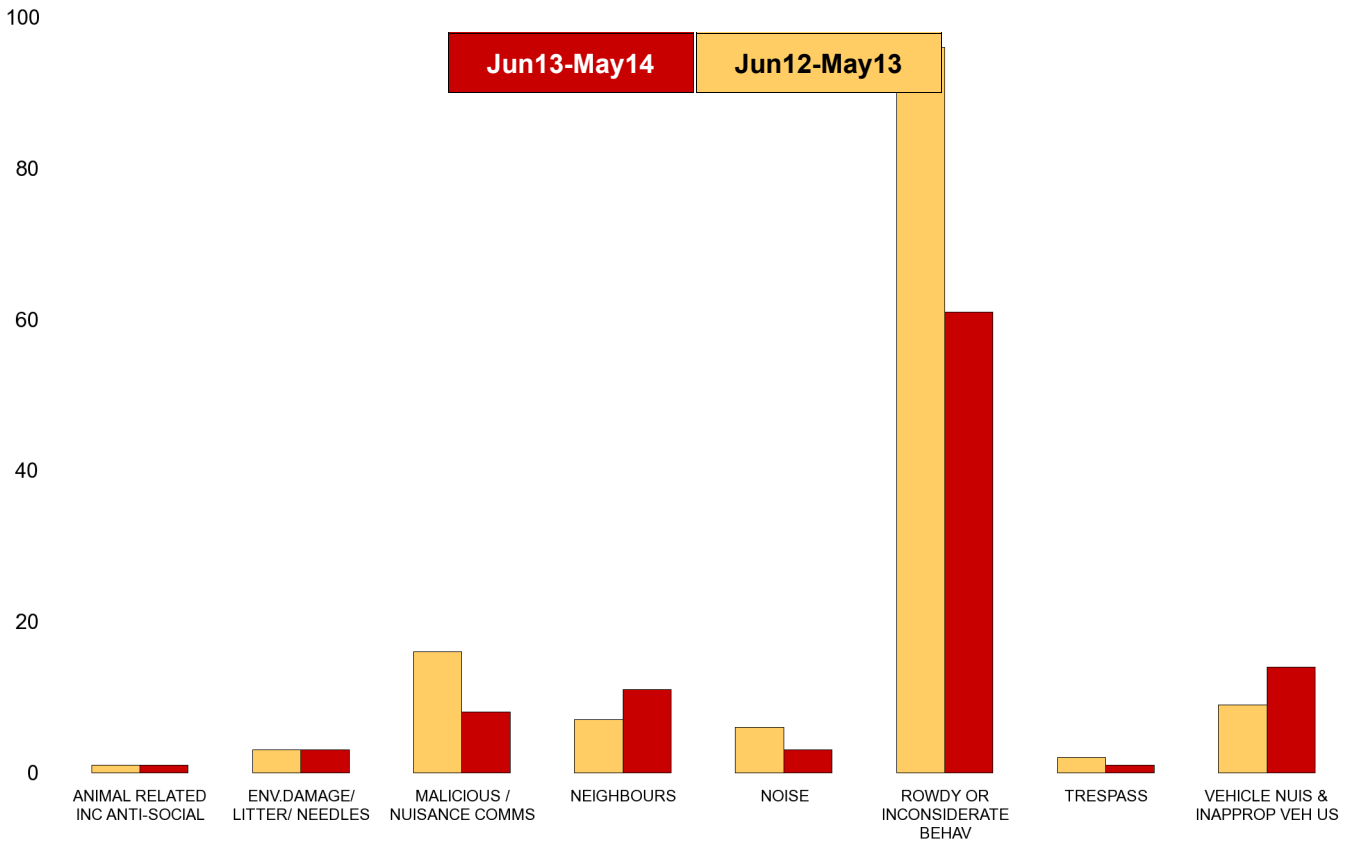
NSIR Closing Cat. 1 Desc	No of Incidents (Jun13-May14)	No of Incidents (Jun12-May13)	+/- Incidents	% Change Incidents
ANIMAL RELATED INC ANTI-SOCIAL	1	2	-1	-50%
ENV.DAMAGE/ LITTER/ NEEDLES	3	2	1	50%
MALICIOUS / NUISANCE COMMS	25	37	-12	-32%
NEIGHBOURS	46	36	10	28%
NOISE	9	8	1	13%
PROSTITUTION RELATED ACTIVITY	1	1	0	0%
ROWDY OR INCONSIDERATE BEHAV	214	380	-166	-44%
TRESPASS	3	3	0	0%
VEHICLE NUIS & INAPPROP VEH US	20	21	-1	-5%
Sum:	322	490	-168	-34%



A6 Towns Forum Report

K003 Barton ASB

NSIR Closing Cat. 1 Desc	No of Incidents (Jun13-May14)	No of Incidents (Jun12-May13)	+/- Incidents	% Change Incidents
ANIMAL RELATED INC ANTI-SOCIAL	1	1	0	0%
ENV.DAMAGE/ LITTER/ NEEDLES	3	3	0	0%
MALICIOUS / NUISANCE COMMS	8	16	-8	-50%
NEIGHBOURS	11	7	4	57%
NOISE	3	6	-3	-50%
ROWDY OR INCONSIDERATE BEHAV	61	96	-35	-36%
TRESPASS	1	2	-1	-50%
VEHICLE NUIS & INAPPROP VEH US	14	9	5	56%
Sum:	102	140	-38	-27%



A6 Towns Forum Report

K005 Latimer ASB

NSIR Closing Cat. 1 Desc	No of Incidents (Jun13-May14)	No of Incidents (Jun12-May13)	+/- Incidents	% Change Incidents
ANIMAL RELATED INC ANTI-SOCIAL	4	6	-2	-33%
ENV.DAMAGE/ LITTER/ NEEDLES	2	8	-6	-75%
MALICIOUS / NUISANCE COMMS	35	30	5	17%
NEIGHBOURS	53	20	33	165%
NOISE	11	16	-5	-31%
ROWDY OR INCONSIDERATE BEHAV	151	164	-13	-8%
TRESPASS	2	2	0	0%
VEHICLE NUIS & INAPPROP VEH US	22	31	-9	-29%
Sum:	280	277	3	1%

