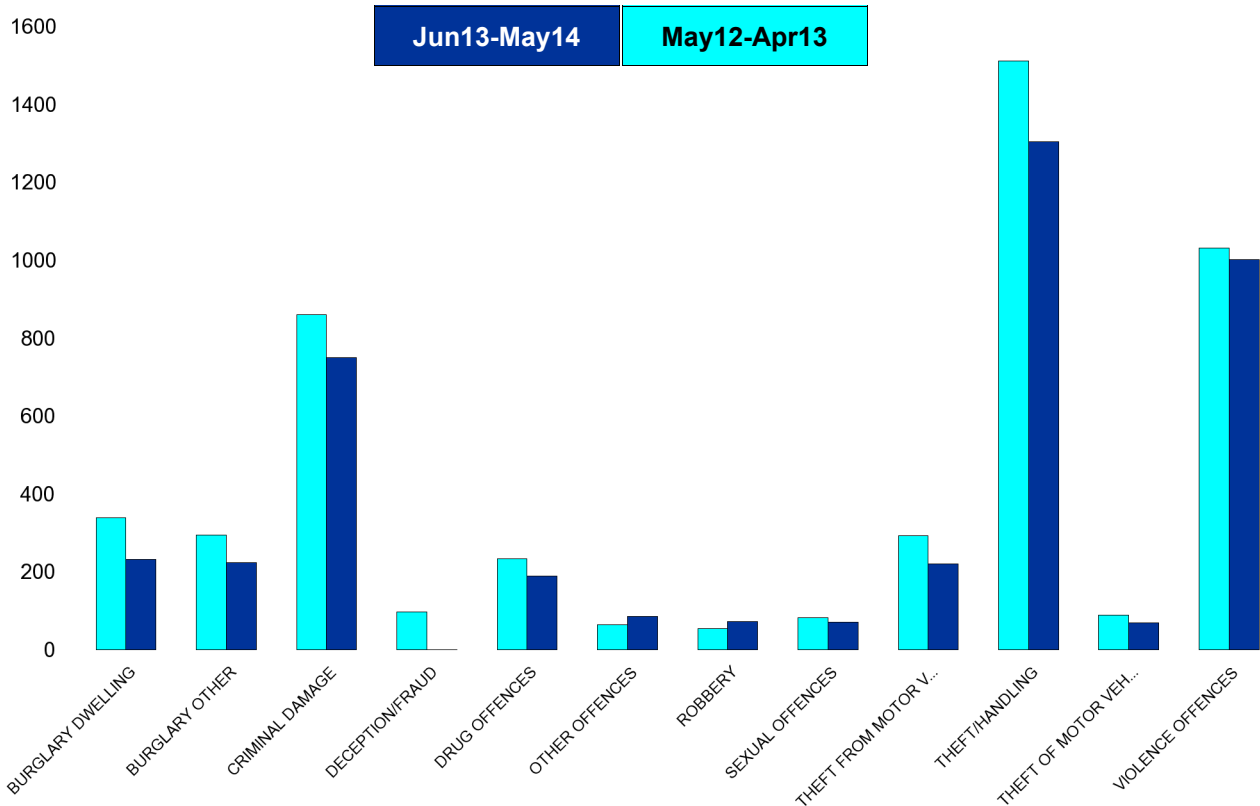


Kettering Town Forum Report

Kettering Town SCT - Crime

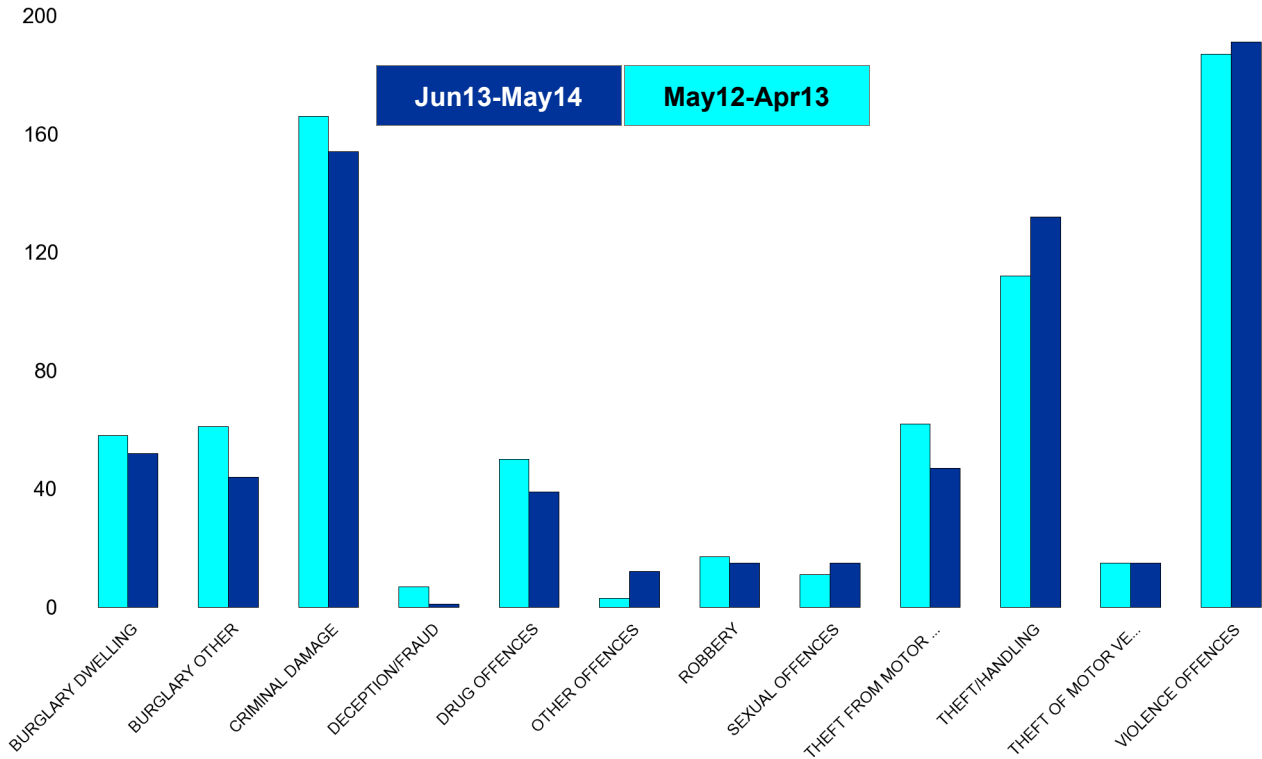
HO Group	No of Crimes (Jun13-May14)	No of Crimes (Jun12-May13)	+/- Crime	% Change	No of Resolved Outcome Crimes	Detection Rate (Past 12 Months)
BURGLARY DWELLING	232	339	-107	-32%	36	16%
BURGLARY OTHER	224	294	-70	-24%	24	11%
CRIMINAL DAMAGE	750	861	-111	-13%	137	18%
DECEPTION/FRAUD	1	97	-96	-99%	4	400%
DRUG OFFENCES	190	233	-43	-18%	172	91%
OTHER OFFENCES	85	64	21	33%	56	66%
ROBBERY	73	54	19	35%	14	19%
SEXUAL OFFENCES	71	82	-11	-13%	15	21%
THEFT FROM MOTOR VEHICLES	220	293	-73	-25%	21	10%
THEFT/HANDLING	1305	1511	-206	-14%	513	39%
THEFT OF MOTOR VEHICLES	70	89	-19	-21%	22	31%
VIOLENCE OFFENCES	1002	1032	-30	-3%	393	39%
Sum:	4223	4949	-726	-15%	1407	33%



Kettering Town Forum Report

All Saints

HO Group	No of Crimes (Jun13-May14)	No of Crimes (Jun12-May13)	+/- Crime	% Change	No of Resolved Outcome Crimes	Detection Rate (Past 12 Months)
BURGLARY DWELLING	52	58	-6	-10%	9	17%
BURGLARY OTHER	44	61	-17	-28%	8	18%
CRIMINAL DAMAGE	154	166	-12	-7%	22	14%
DECEPTION/FRAUD	1	7	-6	-86%	1	100%
DRUG OFFENCES	39	50	-11	-22%	35	90%
OTHER OFFENCES	12	3	9	300%	8	67%
ROBBERY	15	17	-2	-12%	0	0%
SEXUAL OFFENCES	15	11	4	36%	3	20%
THEFT FROM MOTOR VEHICLES	47	62	-15	-24%	5	11%
THEFT/HANDLING	132	112	20	18%	43	33%
THEFT OF MOTOR VEHICLES	15	15	0	0%	7	47%
VIOLENCE OFFENCES	191	187	4	2%	65	34%
Sum:	717	749	-32	-4%	206	29%

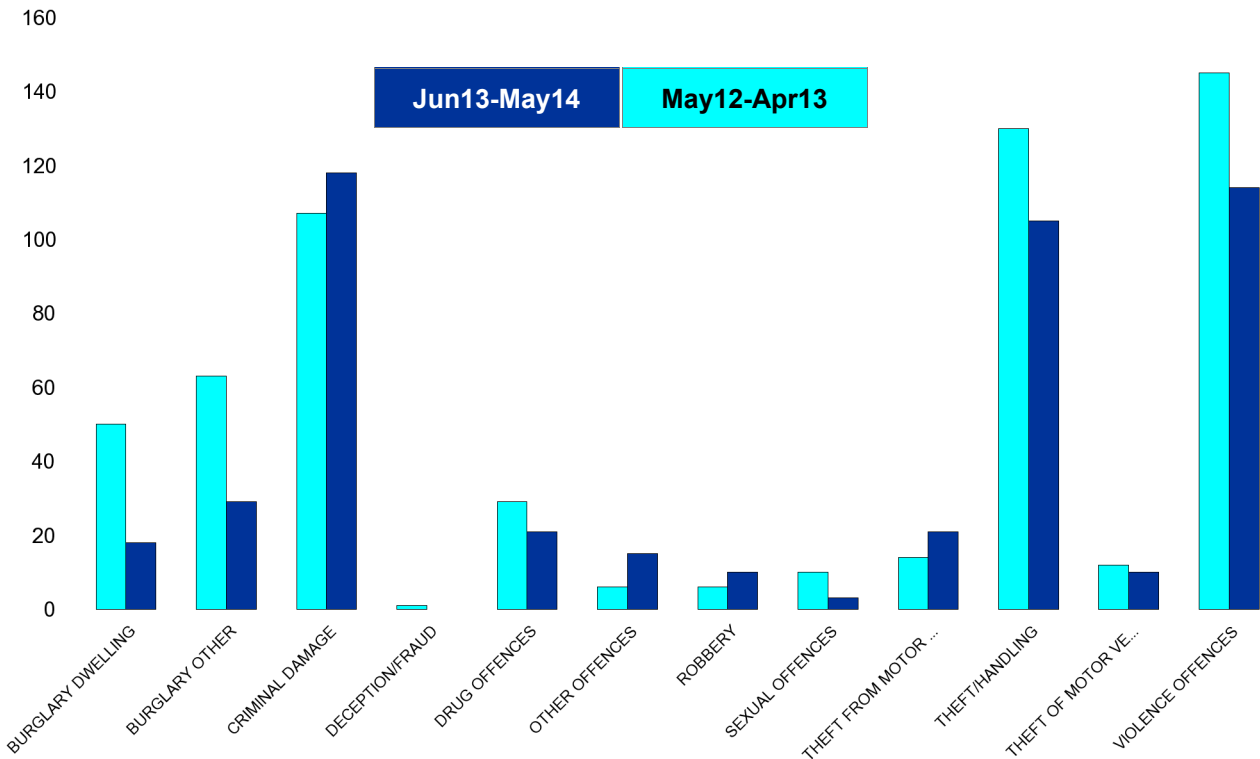


Kettering Town Forum Report

Avondale Grange

HO Group	No of Crimes (Jun13-May14)	No of Crimes (Jun12-May13)	+/- Crime	% Change
BURGLARY DWELLING	18	50	-32	-64%
BURGLARY OTHER	29	63	-34	-54%
CRIMINAL DAMAGE	118	107	11	10%
DECEPTION/FRAUD	0	1	-1	-100%
DRUG OFFENCES	21	29	-8	-28%
OTHER OFFENCES	15	6	9	150%
ROBBERY	10	6	4	67%
SEXUAL OFFENCES	3	10	-7	-70%
THEFT FROM MOTOR VEHICLES	21	14	7	50%
THEFT/HANDLING	105	130	-25	-19%
THEFT OF MOTOR VEHICLES	10	12	-2	-17%
VIOLENCE OFFENCES	114	145	-31	-21%
Sum:	464	573	-109	-19%

No of Resolved Outcome Crimes	Detection Rate (Past 12 Months)
2	11%
4	14%
13	11%
0	0%
19	90%
7	47%
1	10%
0	0%
2	10%
40	38%
2	20%
42	37%
132	28%

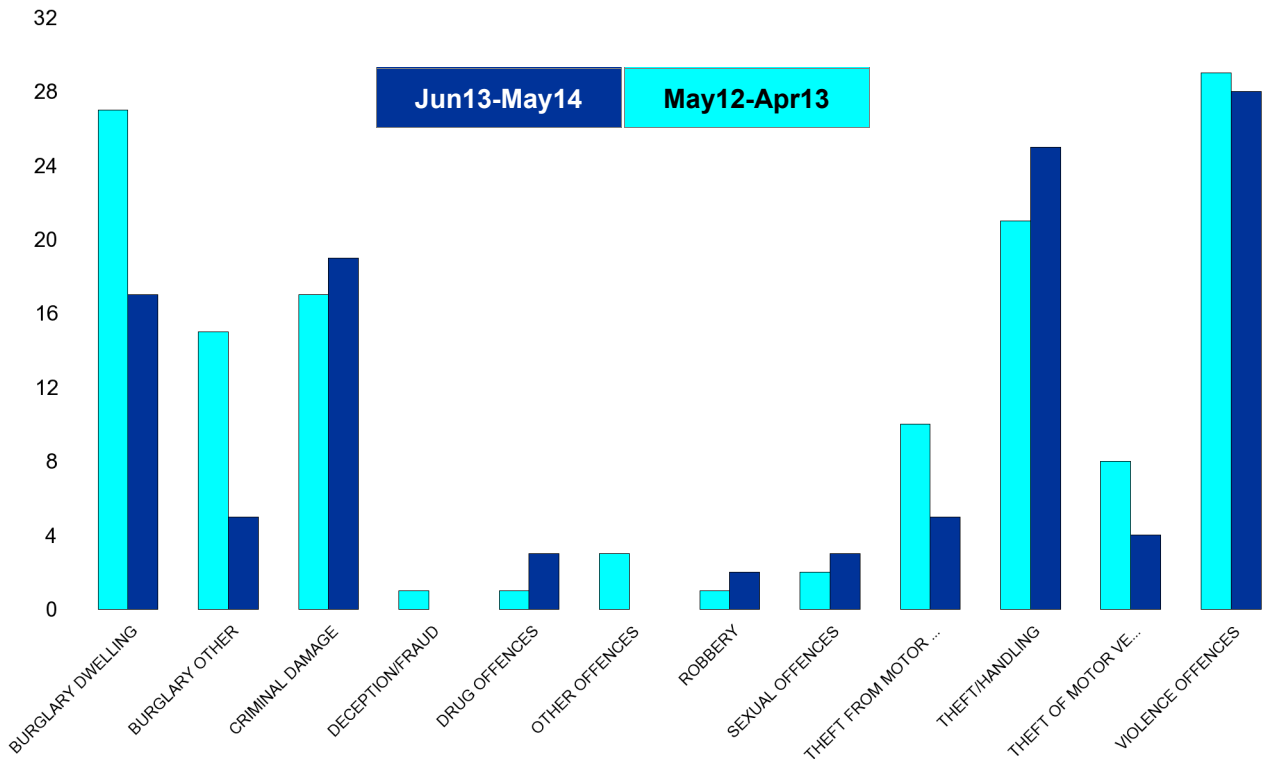


Kettering Town Forum Report

Brambleside

HO Group	No of Crimes (Jun13-May14)	No of Crimes (Jun12-May13)	+/- Crime	% Change
BURGLARY DWELLING	17	27	-10	-37%
BURGLARY OTHER	5	15	-10	-67%
CRIMINAL DAMAGE	19	17	2	12%
DECEPTION/FRAUD	0	1	-1	-100%
DRUG OFFENCES	3	1	2	200%
OTHER OFFENCES	0	3	-3	-100%
ROBBERY	2	1	1	100%
SEXUAL OFFENCES	3	2	1	50%
THEFT FROM MOTOR VEHICLES	5	10	-5	-50%
THEFT/HANDLING	25	21	4	19%
THEFT OF MOTOR VEHICLES	4	8	-4	-50%
VIOLENCE OFFENCES	28	29	-1	-3%
Sum:	111	135	-24	-18%

No of Resolved Outcome Crimes	Detection Rate (Past 12 Months)
4	24%
0	0%
2	11%
0	0%
2	67%
1	0%
0	0%
2	67%
0	0%
11	44%
2	50%
6	21%
30	27%

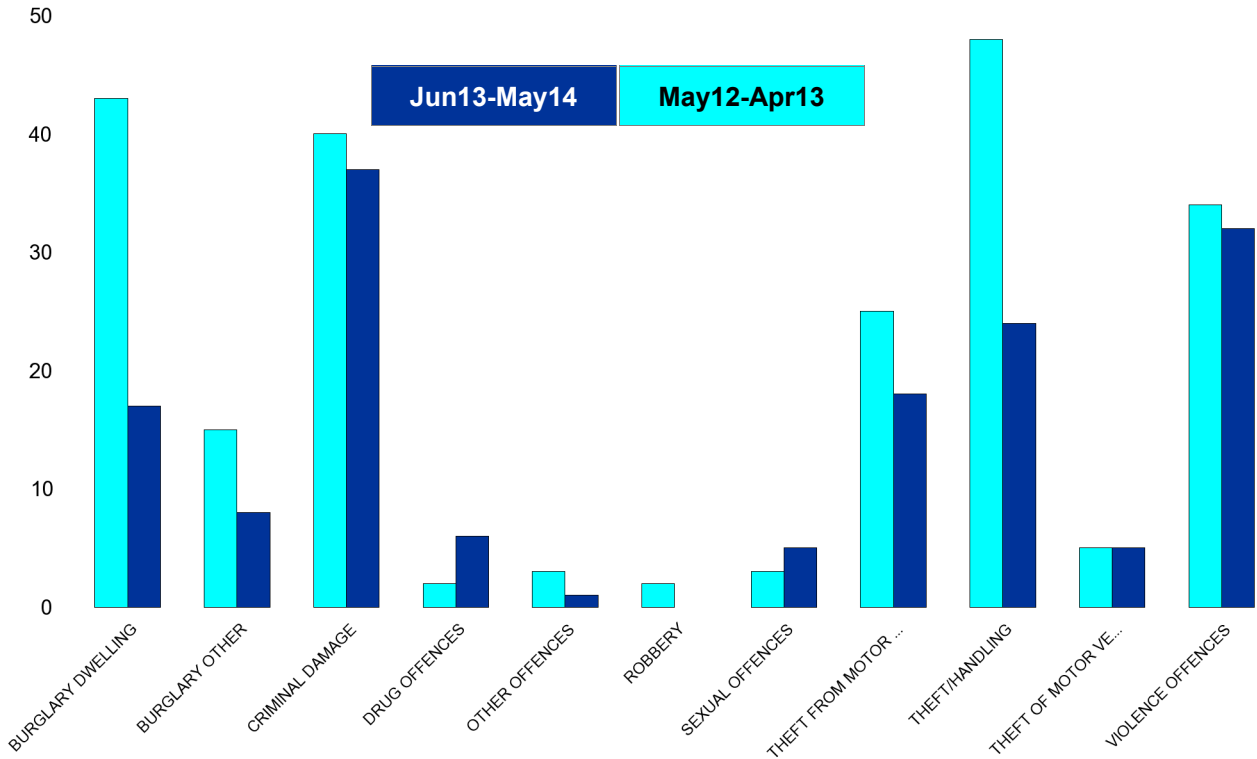


Kettering Town Forum Report

Ise Lodge

HO Group	No of Crimes (Jun13-May14)	No of Crimes (Jun12-May13)	+/- Crime	% Change
BURGLARY DWELLING	17	43	-26	-60%
BURGLARY OTHER	8	15	-7	-47%
CRIMINAL DAMAGE	37	40	-3	-8%
DRUG OFFENCES	6	2	4	200%
OTHER OFFENCES	1	3	-2	-67%
ROBBERY	0	2	-2	-100%
SEXUAL OFFENCES	5	3	2	67%
THEFT FROM MOTOR VEHICLES	18	25	-7	-28%
THEFT/HANDLING	24	48	-24	-50%
THEFT OF MOTOR VEHICLES	5	5	0	0%
VIOLENCE OFFENCES	32	34	-2	-6%
Sum:	153	220	-67	-30%

No of Resolved Outcome Crimes	Detection Rate (Past 12 Months)
6	35%
0	0%
3	8%
4	67%
1	100%
0	0%
0	0%
2	11%
10	42%
0	0%
11	34%
37	24%

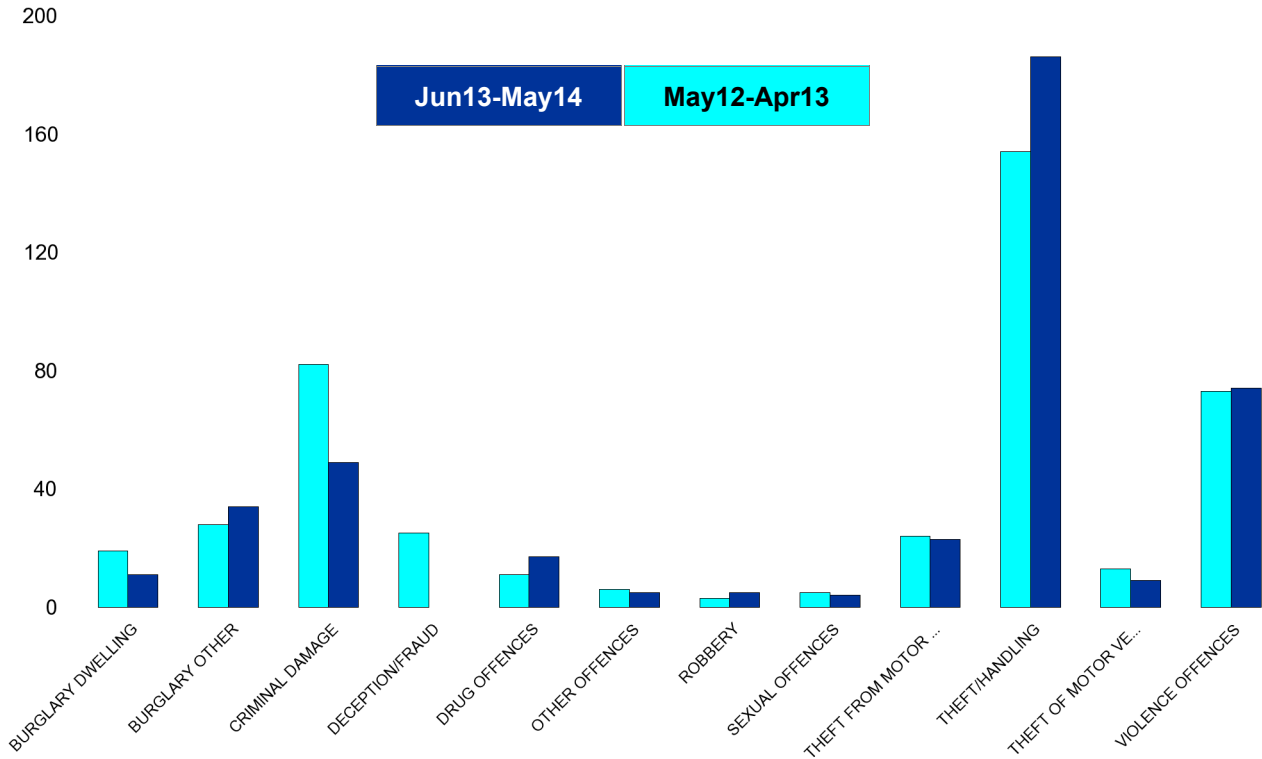


Kettering Town Forum Report

Northfield

HO Group	No of Crimes (Jun13-May14)	No of Crimes (Jun12-May13)	+/- Crime	% Change
BURGLARY DWELLING	11	19	-8	-42%
BURGLARY OTHER	34	28	6	21%
CRIMINAL DAMAGE	49	82	-33	-40%
DECEPTION/FRAUD	0	25	-25	-100%
DRUG OFFENCES	17	11	6	55%
OTHER OFFENCES	5	6	-1	-17%
ROBBERY	5	3	2	67%
SEXUAL OFFENCES	4	5	-1	-20%
THEFT FROM MOTOR VEHICLES	23	24	-1	-4%
THEFT/HANDLING	186	154	32	21%
THEFT OF MOTOR VEHICLES	9	13	-4	-31%
VIOLENCE OFFENCES	74	73	1	1%
Sum:	417	443	-26	-6%

No of Resolved Outcome Crimes	Detection Rate (Past 12 Months)
2	18%
3	9%
8	16%
2	0%
15	88%
5	100%
2	40%
1	25%
4	17%
57	31%
2	22%
29	39%
130	31%

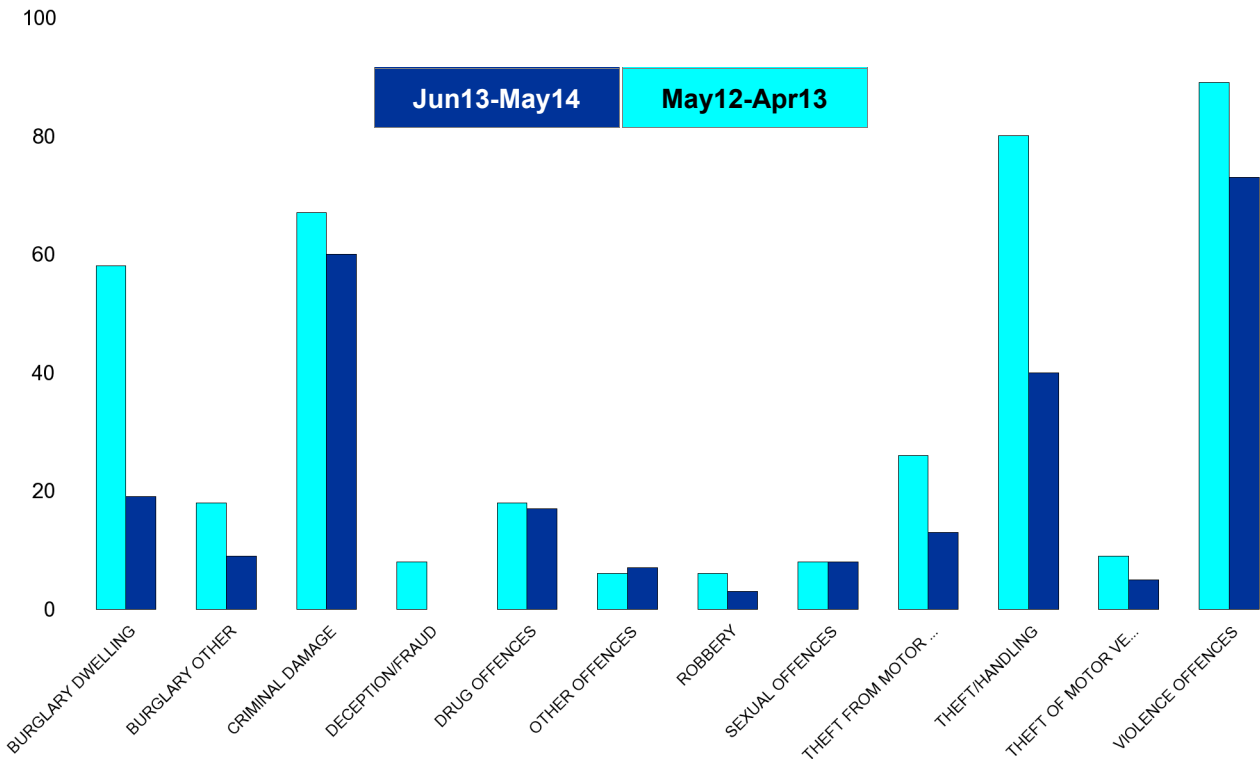


Kettering Town Forum Report

Pipers Hill

HO Group	No of Crimes (Jun13-May14)	No of Crimes (Jun12-May13)	+/- Crime	% Change
BURGLARY DWELLING	19	58	-39	-67%
BURGLARY OTHER	9	18	-9	-50%
CRIMINAL DAMAGE	60	67	-7	-10%
DECEPTION/FRAUD	0	8	-8	-100%
DRUG OFFENCES	17	18	-1	-6%
OTHER OFFENCES	7	6	1	17%
ROBBERY	3	6	-3	-50%
SEXUAL OFFENCES	8	8	0	0%
THEFT FROM MOTOR VEHICLES	13	26	-13	-50%
THEFT/HANDLING	40	80	-40	-50%
THEFT OF MOTOR VEHICLES	5	9	-4	-44%
VIOLENCE OFFENCES	73	89	-16	-18%
Sum:	254	393	-139	-35%

No of Resolved Outcome Crimes	Detection Rate (Past 12 Months)
2	11%
0	0%
6	10%
0	0%
14	82%
3	43%
0	0%
5	63%
2	15%
11	28%
2	40%
18	25%
63	25%

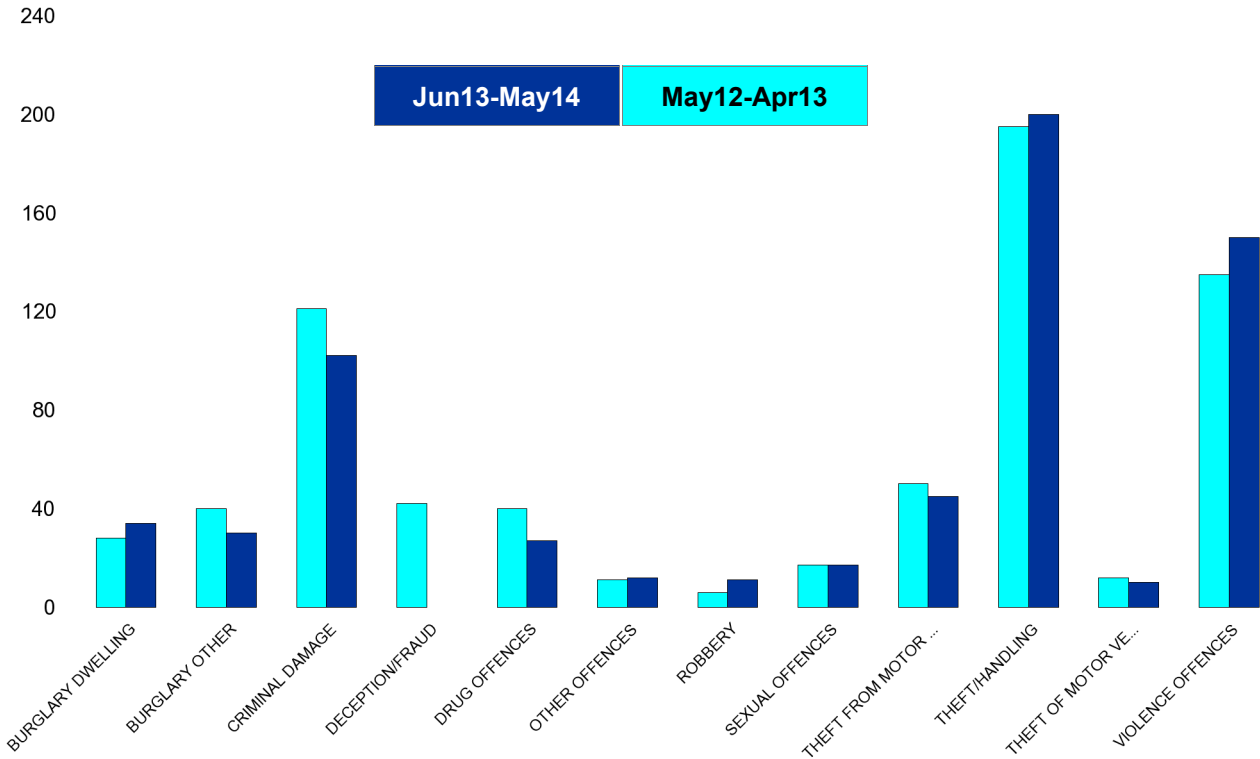


Kettering Town Forum Report

St Michaels and Wickstead

HO Group	No of Crimes (Jun13-May14)	No of Crimes (Jun12-May13)	+/- Crime	% Change
BURGLARY DWELLING	34	28	6	21%
BURGLARY OTHER	30	40	-10	-25%
CRIMINAL DAMAGE	102	121	-19	-16%
DECEPTION/FRAUD	0	42	-42	-100%
DRUG OFFENCES	27	40	-13	-33%
OTHER OFFENCES	12	11	1	9%
ROBBERY	11	6	5	83%
SEXUAL OFFENCES	17	17	0	0%
THEFT FROM MOTOR VEHICLES	45	50	-5	-10%
THEFT/HANDLING	200	195	5	3%
THEFT OF MOTOR VEHICLES	10	12	-2	-17%
VIOLENCE OFFENCES	150	135	15	11%
Sum:	638	697	-59	-8%

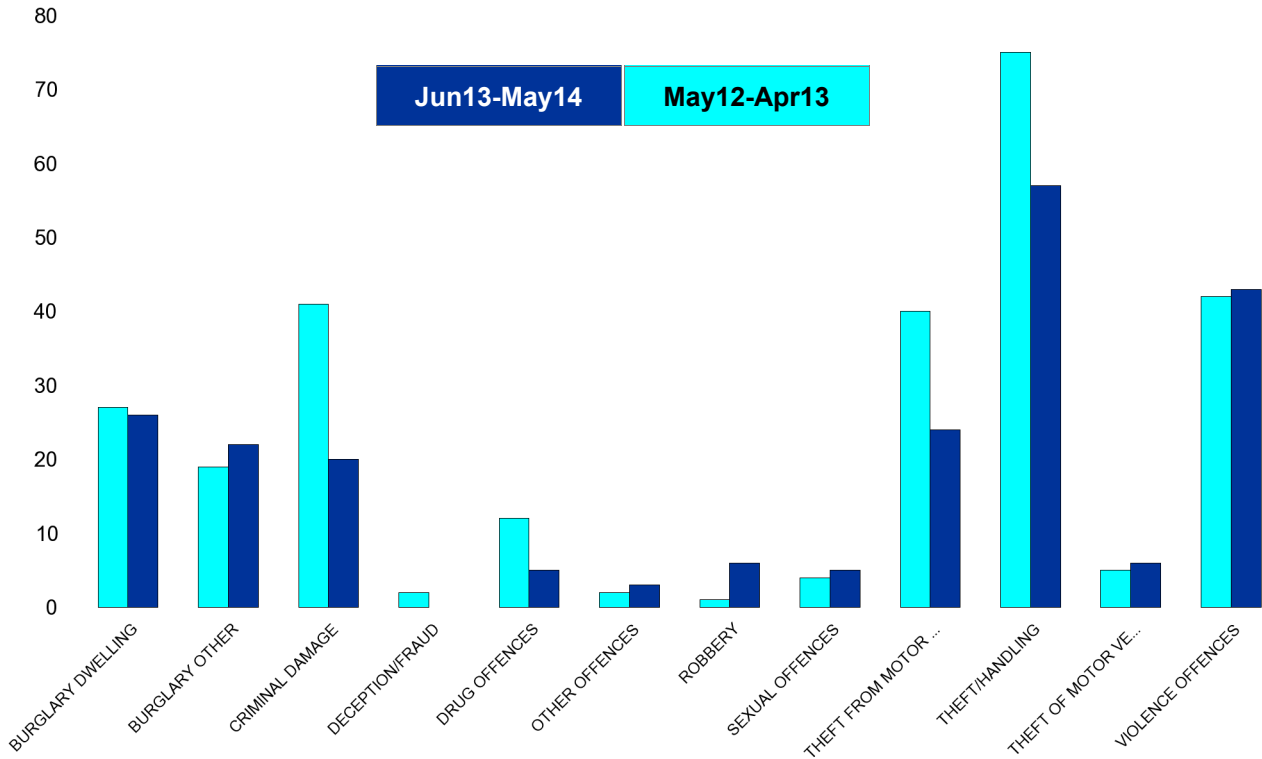
No of Resolved Outcome Crimes	Detection Rate (Past 12 Months)
3	9%
5	17%
32	31%
0	0%
25	93%
9	75%
3	27%
2	12%
2	4%
64	32%
2	20%
57	38%
204	32%



Kettering Town Forum Report

St Peters

HO Group	No of Crimes (Jun13-May14)	No of Crimes (Jun12-May13)	+/- Crime	% Change	No of Resolved Outcome Crimes	Detection Rate (Past 12 Months)
BURGLARY DWELLING	26	27	-1	-4%	1	4%
BURGLARY OTHER	22	19	3	16%	0	0%
CRIMINAL DAMAGE	20	41	-21	-51%	5	25%
DECEPTION/FRAUD	0	2	-2	-100%	0	0%
DRUG OFFENCES	5	12	-7	-58%	5	100%
OTHER OFFENCES	3	2	1	50%	3	100%
ROBBERY	6	1	5	500%	3	50%
SEXUAL OFFENCES	5	4	1	25%	0	0%
THEFT FROM MOTOR VEHICLES	24	40	-16	-40%	3	13%
THEFT/HANDLING	57	75	-18	-24%	12	21%
THEFT OF MOTOR VEHICLES	6	5	1	20%	3	50%
VIOLENCE OFFENCES	43	42	1	2%	19	44%
Sum:	217	270	-53	-20%	54	25%

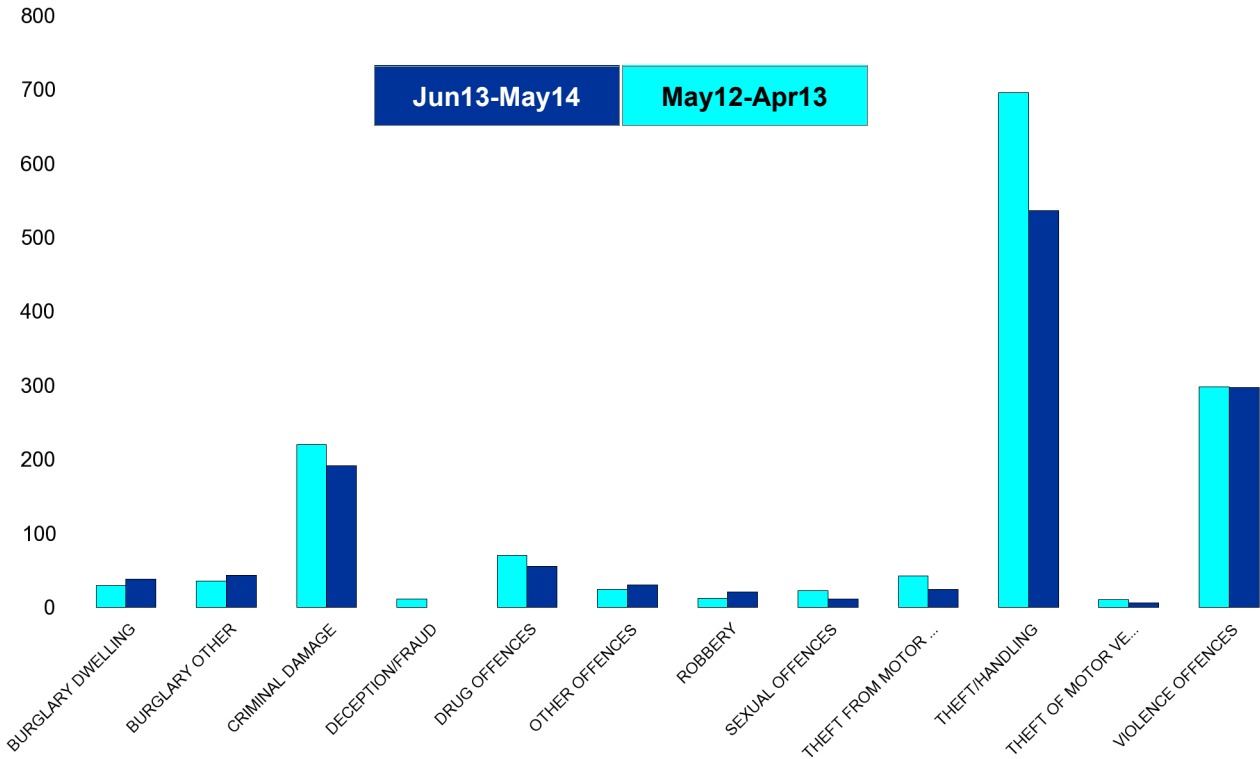


Kettering Town Forum Report

William Knibb

HO Group	No of Crimes (Jun13-May14)	No of Crimes (Jun12-May13)	+/- Crime	% Change
BURGLARY DWELLING	38	29	9	31%
BURGLARY OTHER	43	35	8	23%
CRIMINAL DAMAGE	191	220	-29	-13%
DECEPTION/FRAUD	0	11	-11	-100%
DRUG OFFENCES	55	70	-15	-21%
OTHER OFFENCES	30	24	6	25%
ROBBERY	21	12	9	75%
SEXUAL OFFENCES	11	22	-11	-50%
THEFT FROM MOTOR VEHICLES	24	42	-18	-43%
THEFT/HANDLING	536	696	-160	-23%
THEFT OF MOTOR VEHICLES	6	10	-4	-40%
VIOLENCE OFFENCES	297	298	-1	-0%
Sum:	1252	1469	-217	-15%

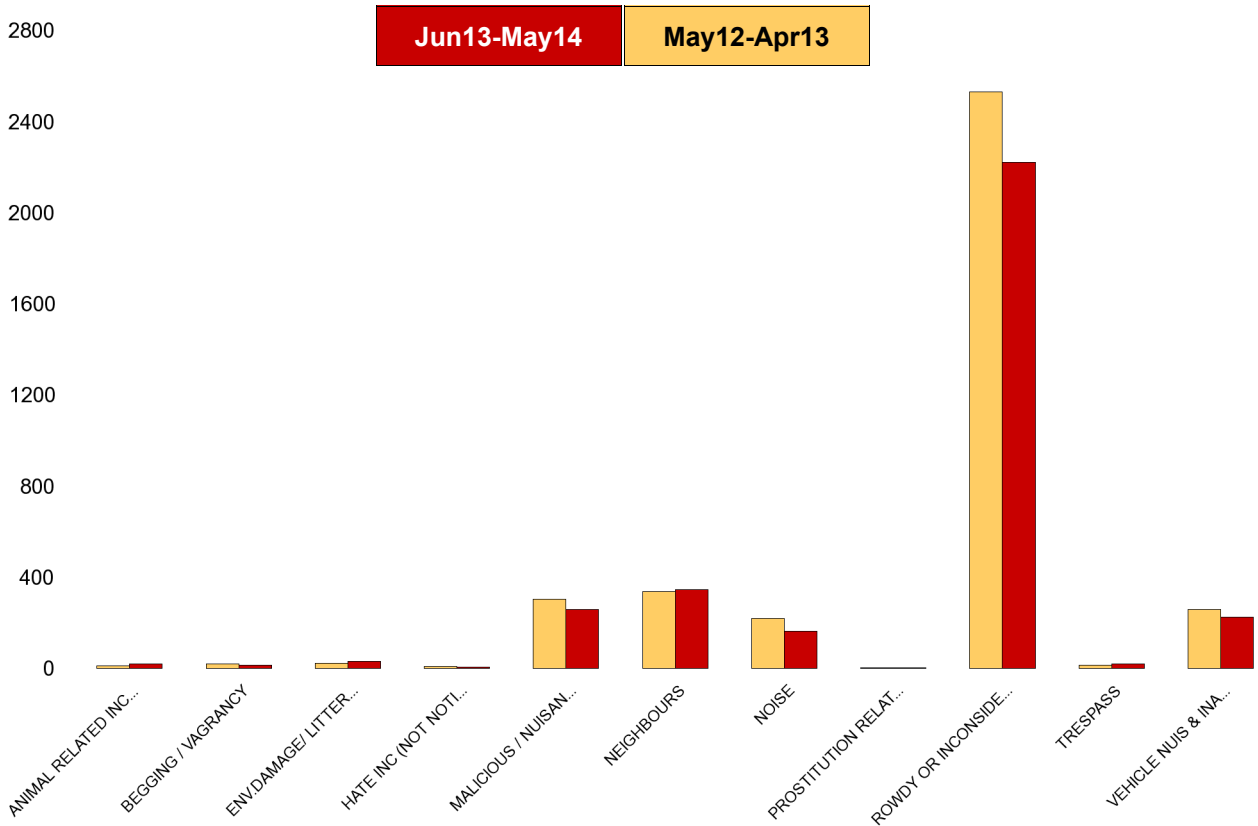
No of Resolved Outcome Crimes	Detection Rate (Past 12 Months)
7	18%
4	9%
46	24%
1	0%
53	96%
19	63%
5	24%
2	18%
1	4%
265	49%
2	33%
146	49%
551	44%



Kettering Town Forum Report

Kettering Town SCT - ASB

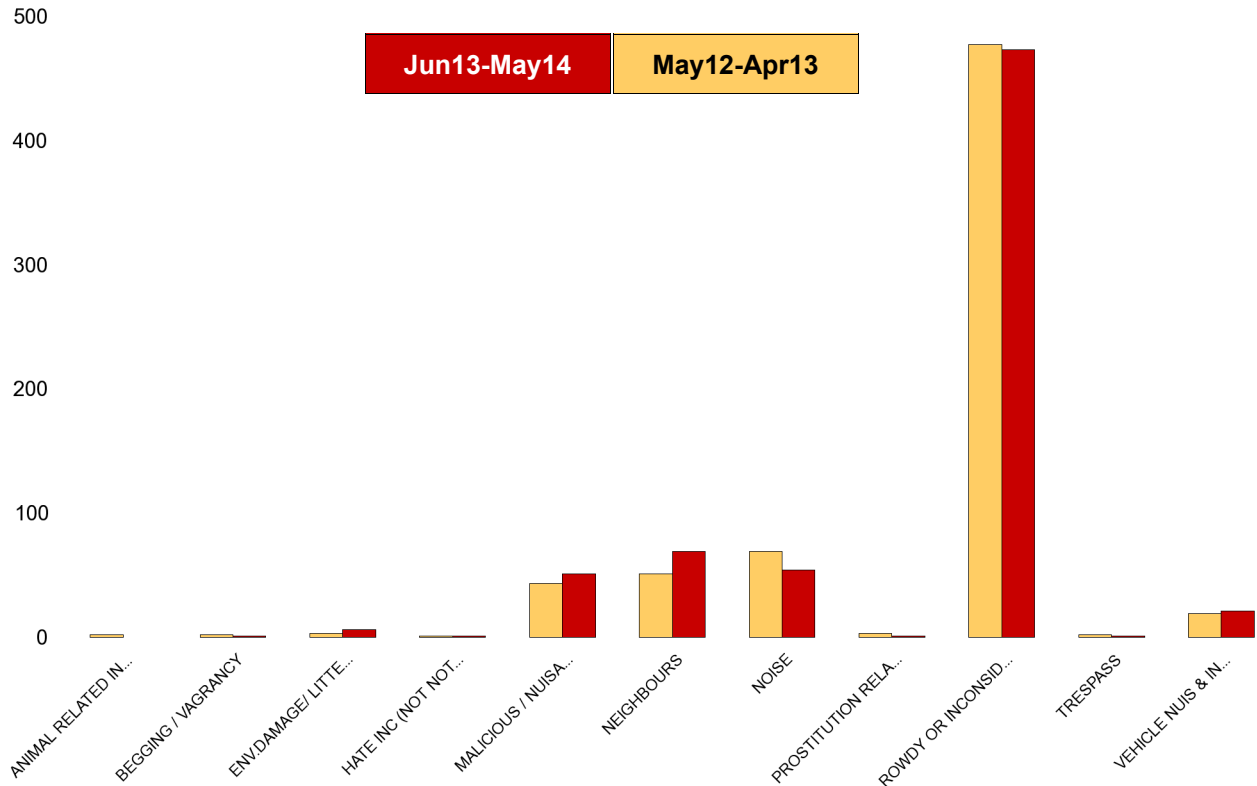
NSIR Closing Cat. 1 Desc	No of Incidents (Jun13-May14)	No of Incidents (Jun12-May13)	+/- Incidents	% Change Incidents
ANIMAL RELATED INC ANTI-SOCIAL	21	14	7	50%
BEGGING / VAGRANCY	16	20	-4	-20%
ENV.DAMAGE/ LITTER/ NEEDLES	31	23	8	35%
HATE INC (NOT NOTIFIABLE CRIME	8	9	-1	-11%
MALICIOUS / NUISANCE COMMS	259	306	-47	-15%
NEIGHBOURS	347	340	7	2%
NOISE	165	222	-57	-26%
PROSTITUTION RELATED ACTIVITY	3	4	-1	-25%
ROWDY OR INCONSIDERATE BEHAV	2224	2532	-308	-12%
TRESPASS	21	16	5	31%
VEHICLE NUIS & INAPPROP VEH US	227	260	-33	-13%
Sum:	3322	3746	-424	-11%



Kettering Town Forum Report

All Saints

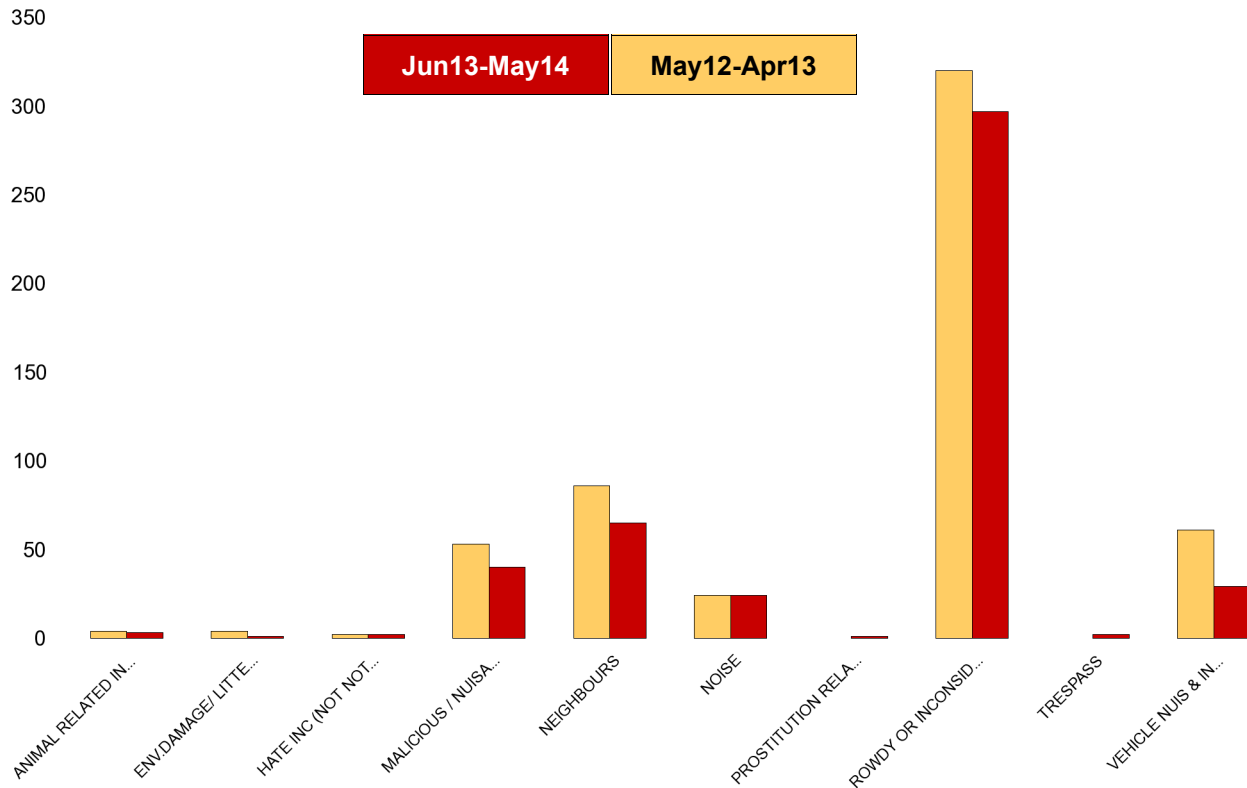
NSIR Closing Cat. 1 Desc	No of Incidents (Jun13-May14)	No of Incidents (Jun12-May13)	+/- Incidents	% Change Incidents
ANIMAL RELATED INC ANTI-SOCIAL	0	2	-2	-100%
BEGGING / VAGRANCY	1	2	-1	-50%
ENV.DAMAGE/ LITTER/ NEEDLES	6	3	3	100%
HATE INC (NOT NOTIFIABLE CRIME	1	1	0	0%
MALICIOUS / NUISANCE COMMS	51	43	8	19%
NEIGHBOURS	69	51	18	35%
NOISE	54	69	-15	-22%
PROSTITUTION RELATED ACTIVITY	1	3	-2	-67%
ROWDY OR INCONSIDERATE BEHAV	473	477	-4	-1%
TRESPASS	1	2	-1	-50%
VEHICLE NUIS & INAPPROP VEH US	21	19	2	11%
Sum:	678	672	6	1%



Kettering Town Forum Report

Avondale Grange

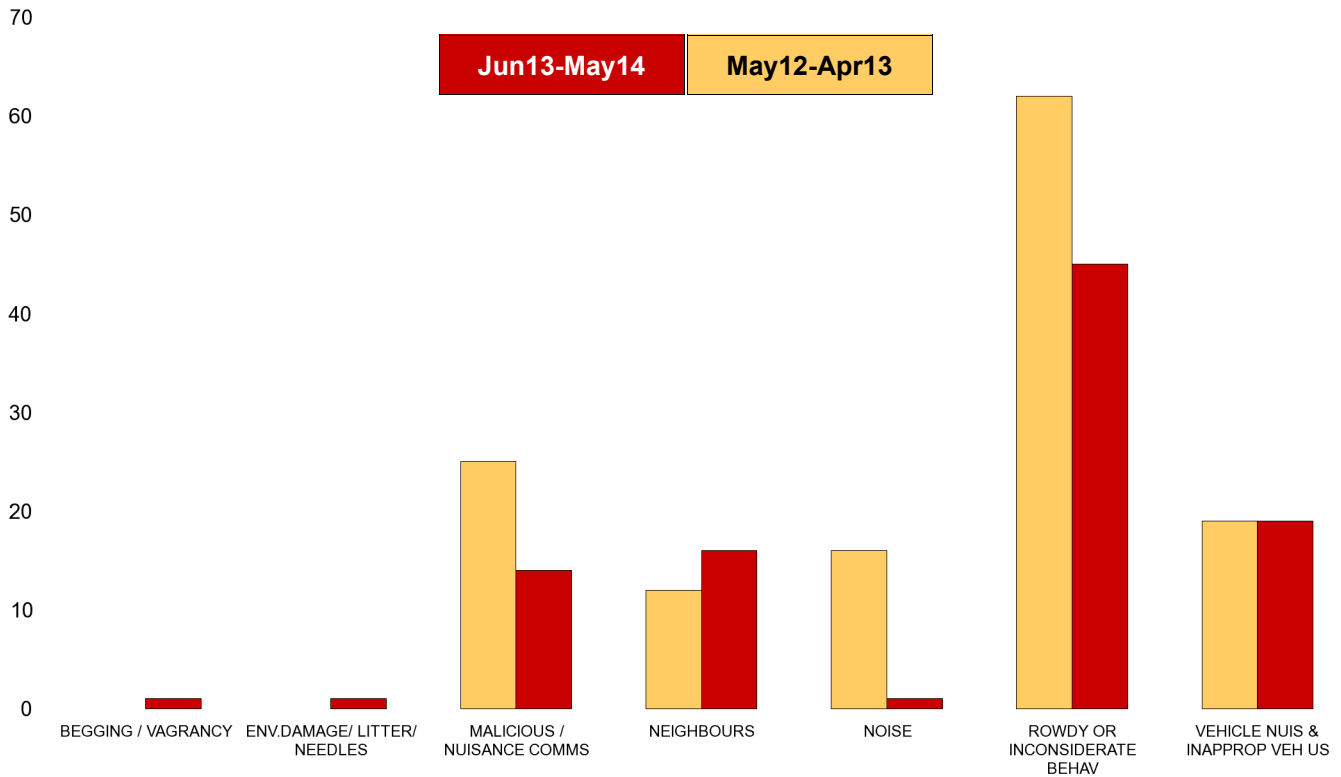
NSIR Closing Cat. 1 Desc	No of Incidents (Jun13-May14)	No of Incidents (Jun12-May13)	+/- Incidents	% Change Incidents
ANIMAL RELATED INC ANTI-SOCIAL	3	4	-1	-25%
ENV.DAMAGE/ LITTER/ NEEDLES	1	4	-3	-75%
HATE INC (NOT NOTIFIABLE CRIME)	2	2	0	0%
MALICIOUS / NUISANCE COMMS	40	53	-13	-25%
NEIGHBOURS	65	86	-21	-24%
NOISE	24	24	0	0%
PROSTITUTION RELATED ACTIVITY	1	0	1	0%
ROWDY OR INCONSIDERATE BEHAV	297	320	-23	-7%
TRESPASS	2	0	2	0%
VEHICLE NUIS & INAPPROP VEH US	29	61	-32	-52%
Sum:	464	554	-90	-16%



Kettering Town Forum Report

Brambleside

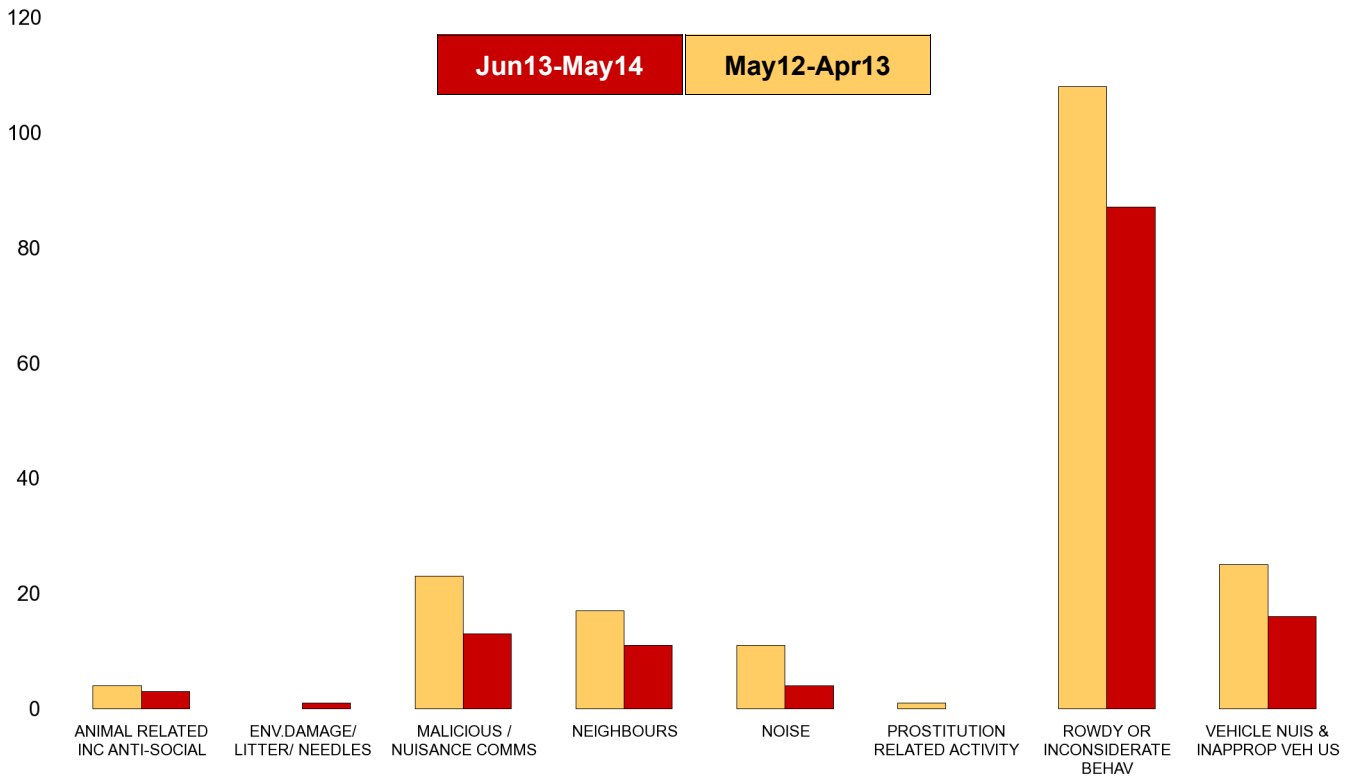
NSIR Closing Cat. 1 Desc	No of Incidents (Jun13-May14)	No of Incidents (Jun12-May13)	+/- Incidents	% Change Incidents
BEGGING / VAGRANCY	1	0	1	0%
ENV.DAMAGE/ LITTER/ NEEDLES	1	0	1	0%
MALICIOUS / NUISANCE COMMS	14	25	-11	-44%
NEIGHBOURS	16	12	4	33%
NOISE	1	16	-15	-94%
ROWDY OR INCONSIDERATE BEHAV	45	62	-17	-27%
VEHICLE NUIS & INAPPROP VEH US	19	19	0	0%
Sum:	97	134	-37	-28%



Kettering Town Forum Report

Ise Lodge

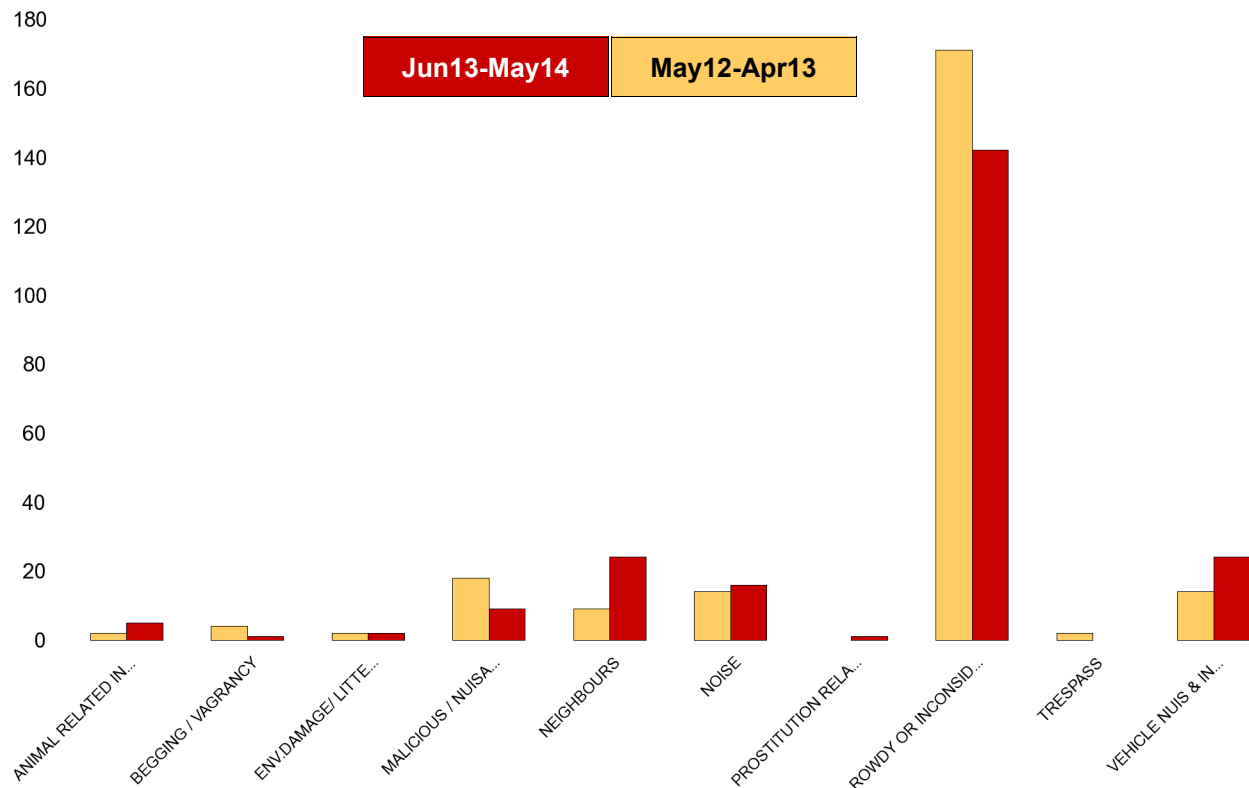
NSIR Closing Cat. 1 Desc	No of Incidents (Jun13-May14)	No of Incidents (Jun12-May13)	+/- Incidents	% Change Incidents
ANIMAL RELATED INC ANTI-SOCIAL	3	4	-1	-25%
ENV.DAMAGE/ LITTER/ NEEDLES	1	0	1	0%
MALICIOUS / NUISANCE COMMS	13	23	-10	-43%
NEIGHBOURS	11	17	-6	-35%
NOISE	4	11	-7	-64%
PROSTITUTION RELATED ACTIVITY	0	1	-1	-100%
ROWDY OR INCONSIDERATE BEHAV	87	108	-21	-19%
VEHICLE NUIS & INAPPROP VEH US	16	25	-9	-36%
Sum:	135	189	-54	-29%



Kettering Town Forum Report

Northfield

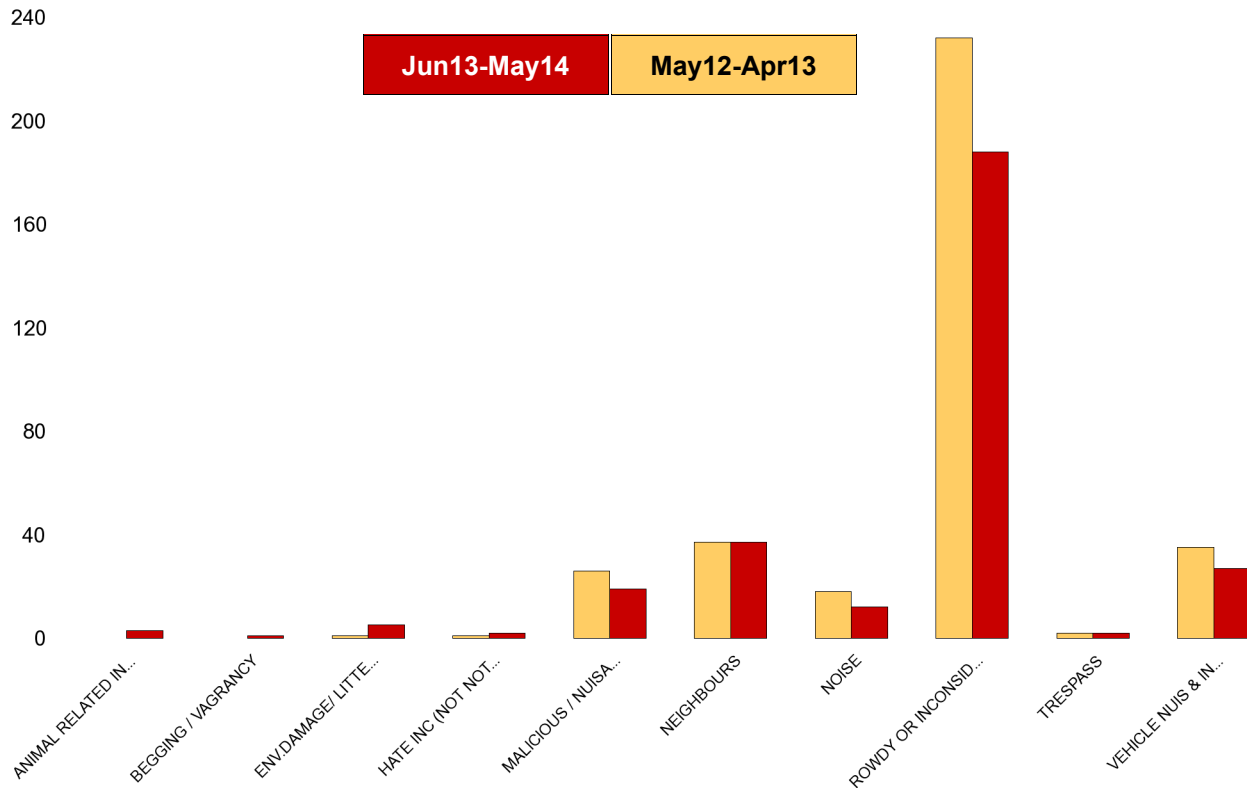
NSIR Closing Cat. 1 Desc	No of Incidents (Jun13-May14)	No of Incidents (Jun12-May13)	+/- Incidents	% Change Incidents
ANIMAL RELATED INC ANTI-SOCIAL	5	2	3	150%
BEGGING / VAGRANCY	1	4	-3	-75%
ENV.DAMAGE/ LITTER/ NEEDLES	2	2	0	0%
MALICIOUS / NUISANCE COMMS	9	18	-9	-50%
NEIGHBOURS	24	9	15	167%
NOISE	16	14	2	14%
PROSTITUTION RELATED ACTIVITY	1	0	1	0%
ROWDY OR INCONSIDERATE BEHAV	142	171	-29	-17%
TRESPASS	0	2	-2	-100%
VEHICLE NUIS & INAPPROP VEH US	24	14	10	71%
Sum:	224	236	-12	-5%



Kettering Town Forum Report

Pipers Hill

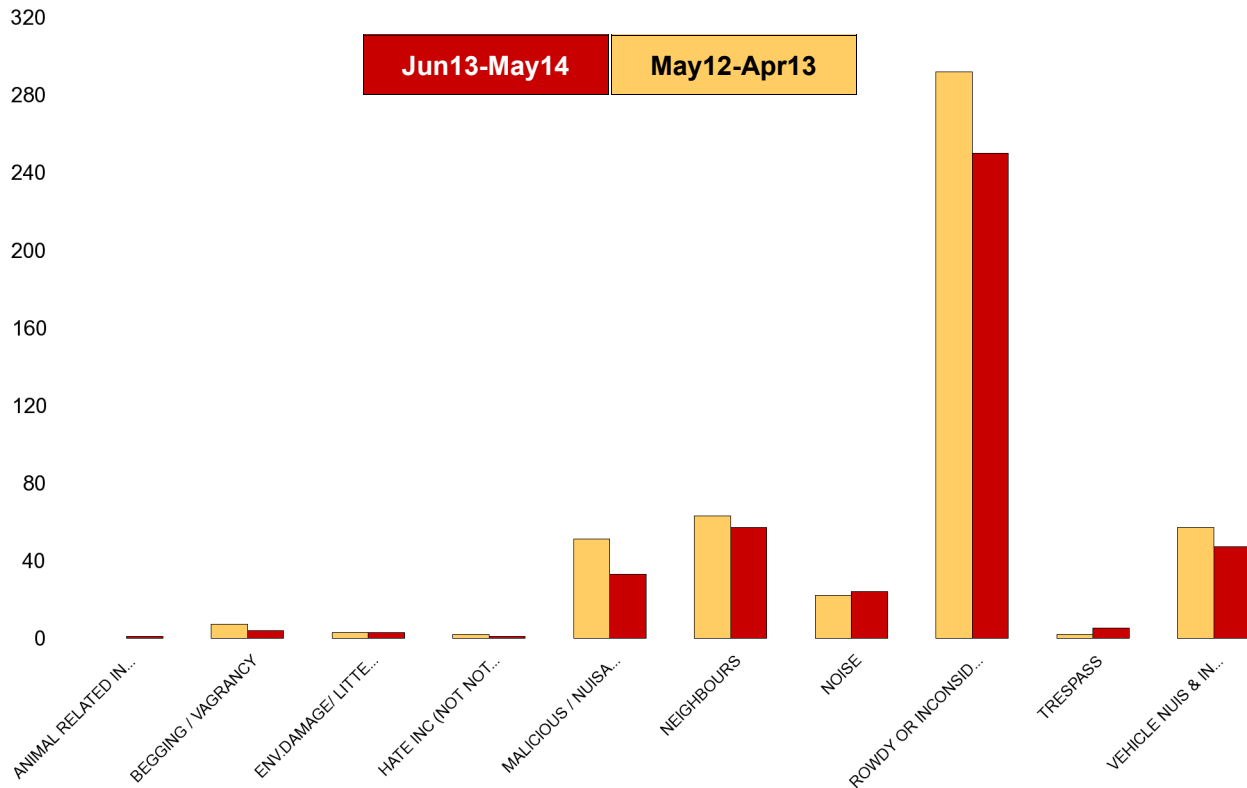
NSIR Closing Cat. 1 Desc	No of Incidents (Jun13-May14)	No of Incidents (Jun12-May13)	+/- Incidents	% Change Incidents
ANIMAL RELATED INC ANTI-SOCIAL	3	0	3	0%
BEGGING / VAGRANCY	1	0	1	0%
ENV.DAMAGE/ LITTER/ NEEDLES	5	1	4	400%
HATE INC (NOT NOTIFIABLE CRIME	2	1	1	100%
MALICIOUS / NUISANCE COMMS	19	26	-7	-27%
NEIGHBOURS	37	37	0	0%
NOISE	12	18	-6	-33%
ROWDY OR INCONSIDERATE BEHAV	188	232	-44	-19%
TRESPASS	2	2	0	0%
VEHICLE NUIS & INAPPROP VEH US	27	35	-8	-23%
Sum:	296	352	-56	-16%



Kettering Town Forum Report

St Michaels and Wicksteed

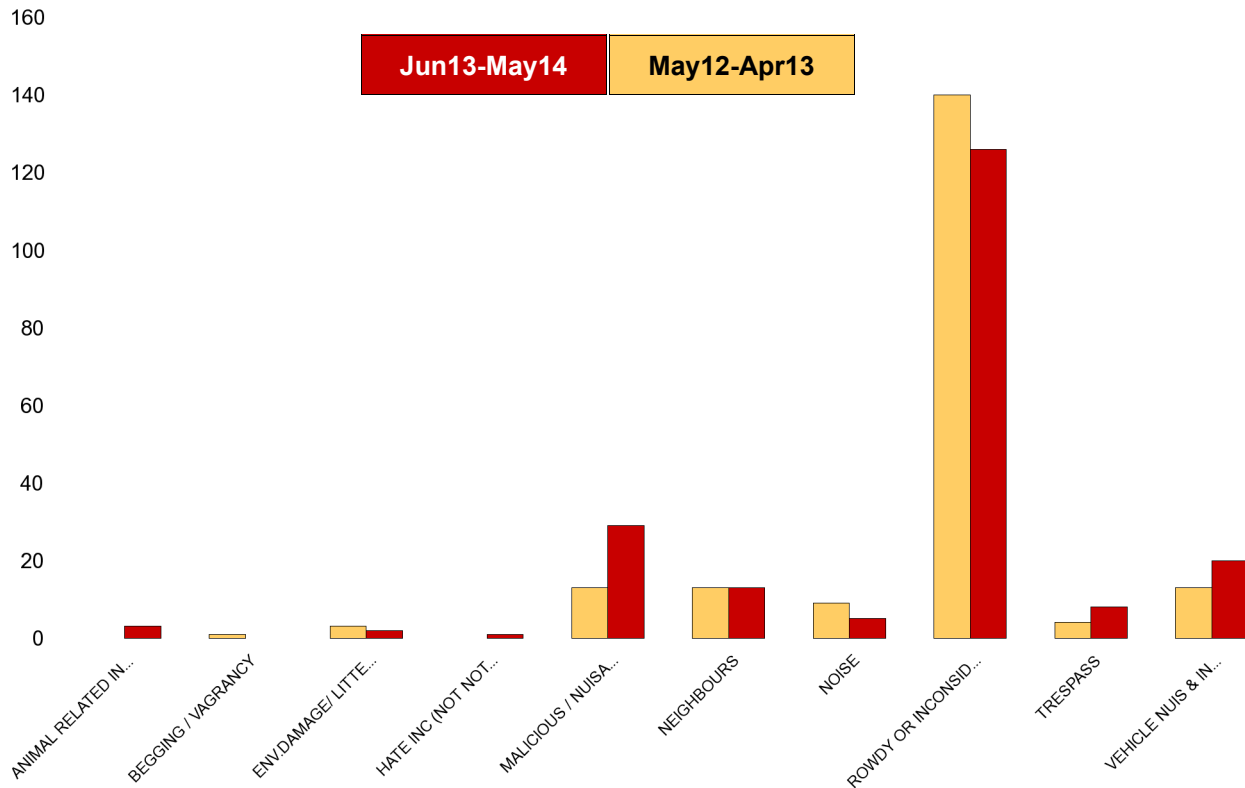
NSIR Closing Cat. 1 Desc	No of Incidents (Jun13-May14)	No of Incidents (Jun12-May13)	+/- Incidents	% Change Incidents
ANIMAL RELATED INC ANTI-SOCIAL	1	0	1	0%
BEGGING / VAGRANCY	4	7	-3	-43%
ENV.DAMAGE/ LITTER/ NEEDLES	3	3	0	0%
HATE INC (NOT NOTIFIABLE CRIME	1	2	-1	-50%
MALICIOUS / NUISANCE COMMS	33	51	-18	-35%
NEIGHBOURS	57	63	-6	-10%
NOISE	24	22	2	9%
ROWDY OR INCONSIDERATE BEHAV	250	292	-42	-14%
TRESPASS	5	2	3	150%
VEHICLE NUIS & INAPPROP VEH US	47	57	-10	-18%
Sum:	425	499	-74	-15%



Kettering Town Forum Report

St Peters

NSIR Closing Cat. 1 Desc	No of Incidents (Jun13-May14)	No of Incidents (Jun12-May13)	+/- Incidents	% Change Incidents
ANIMAL RELATED INC ANTI-SOCIAL	3	0	3	0%
BEGGING / VAGRANCY	0	1	-1	-100%
ENV.DAMAGE/ LITTER/ NEEDLES	2	3	-1	-33%
HATE INC (NOT NOTIFIABLE CRIME	1	0	1	0%
MALICIOUS / NUISANCE COMMS	29	13	16	123%
NEIGHBOURS	13	13	0	0%
NOISE	5	9	-4	-44%
ROWDY OR INCONSIDERATE BEHAV	126	140	-14	-10%
TRESPASS	8	4	4	100%
VEHICLE NUIS & INAPPROP VEH US	20	13	7	54%
Sum:	207	196	11	6%



Kettering Town Forum Report

William Knibb

NSIR Closing Cat. 1 Desc	No of Incidents (Jun13-May14)	No of Incidents (Jun12-May13)	+/- Incidents	% Change Incidents
ANIMAL RELATED INC ANTI-SOCIAL	3	2	1	50%
BEGGING / VAGRANCY	8	6	2	33%
ENV.DAMAGE/ LITTER/ NEEDLES	10	7	3	43%
HATE INC (NOT NOTIFIABLE CRIME	1	3	-2	-67%
MALICIOUS / NUISANCE COMMS	51	54	-3	-6%
NEIGHBOURS	55	52	3	6%
NOISE	25	39	-14	-36%
ROWDY OR INCONSIDERATE BEHAV	616	730	-114	-16%
TRESPASS	3	4	-1	-25%
VEHICLE NUIS & INAPPROP VEH US	24	17	7	41%
Sum:	796	914	-118	-13%

