

Superfast Northamptonshire

Expected deployment of superfast broadband by 2017

Purpose and Notices

This map shows an overview of the expected roll out of superfast broadband in Northamptonshire, including proposed commercial plans by 2015, and expected deployment up to 2017 in the current Superfast Northamptonshire Project intervention area. It is based on best known information at March 2014.

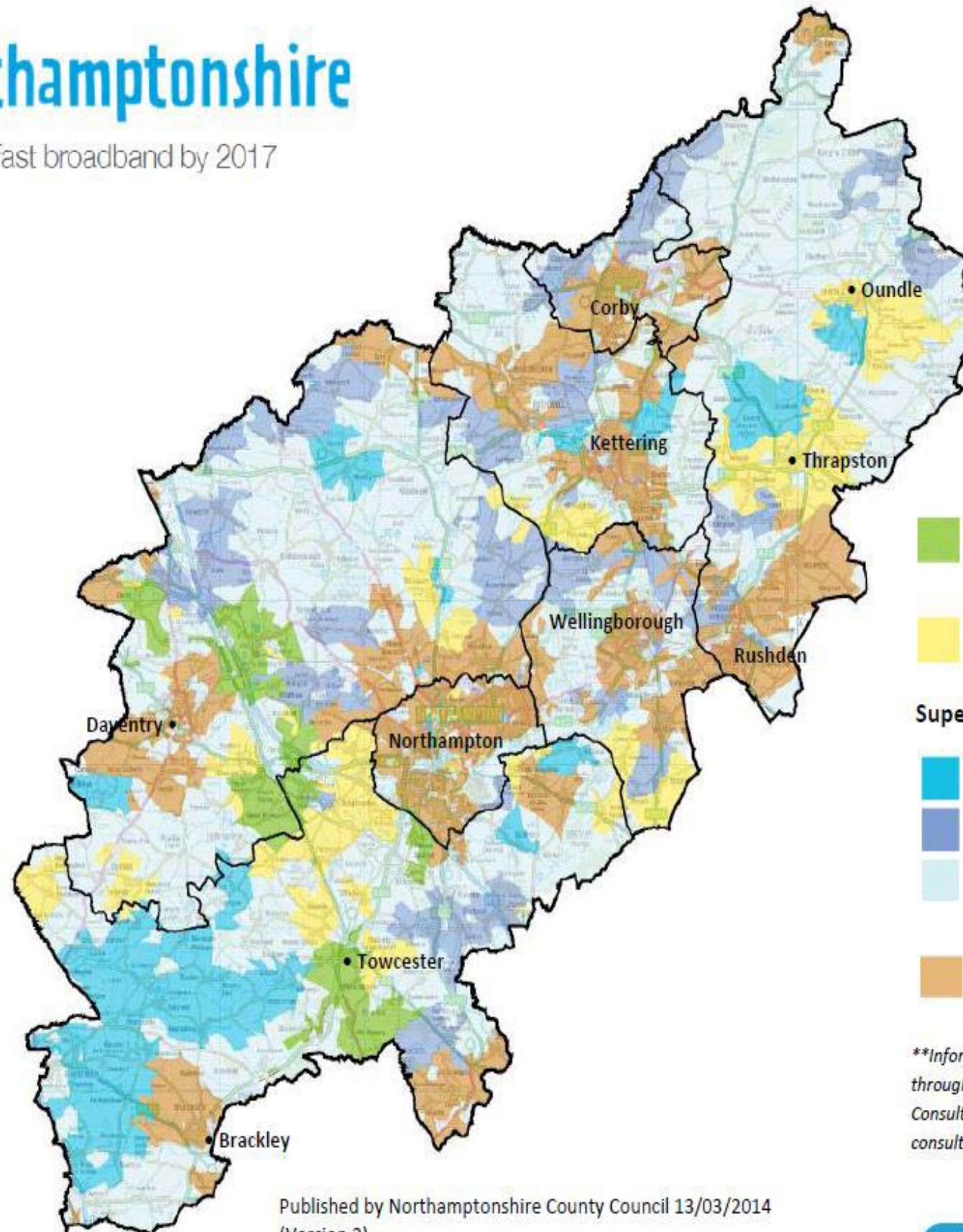
Expected deployment plans will be subject to change over the lifetime of the Project. Forecast start dates are estimates only. Updates will be published regularly on the Project website.

*Please refer to the [Planning and Survey](#) page on the Project website for more information about this activity. Some, but not all, areas highlighted as 'subject to survey' will be deployed in 2014.

Phased 'go live' announcements will be made on the Project website.

Some premises within a locality may be served in a later phase of the Project. Indicative timescales shown are based on when the majority of premises in an area are expected to be served.

Further information on why deployment plans may change or why premises in the same locality may fall into different phases is available on the Project website's FAQ section (see www.superfastnorthamptonshire.net)



Key

- 'Live' Fibre enabled areas. Ask your internet provider about the availability of superfast broadband.
- Areas subject to survey and planning (see Purpose and Notices*).

Superfast Broadband Roll Out:

- Expected to start in 2014
- Expected to start in 2015
- Solutions have yet to be confirmed.
- Target completion by end 2017
- Existing & expected commercial coverage** of superfast broadband up to 2015

**Information on commercial coverage collated through an Open Market Review and Public Consultation undertaken in 2012 (to be re-consulted on in 2014)

Published by Northamptonshire County Council 13/03/2014 (Version 2)

© Crown Copyright and database right 2014. All rights reserved
Northamptonshire County Council Licence No. 100019331

