

East Kettering Liaison Forum

General Project Update

21st January 2014

Adrian Arnold, Rebecca Collins & Louise Holland

Kettering
Borough Council

General Project Update

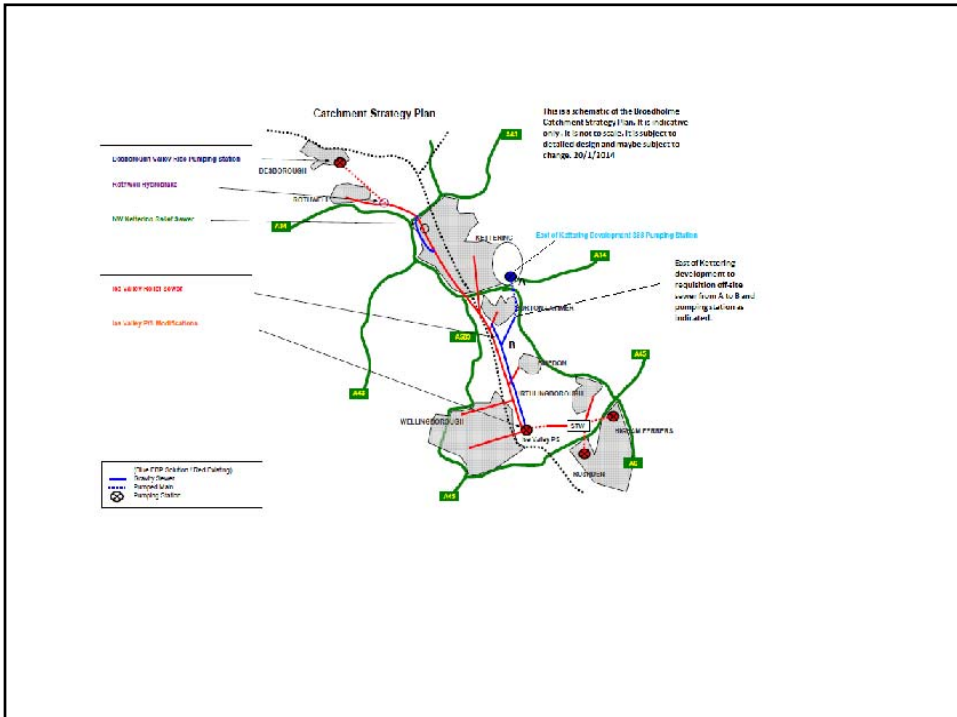
- ◆ Project Plan, Timeline and Committee Programme
- ◆ Infrastructure Update
 - ◆ Drainage
 - ◆ Primary School
 - ◆ J10/10A
 - ◆ WeWaA
- ◆ Applications Update
 - ◆ Housing
 - ◆ Access (D E and F)
 - ◆ Other Applications

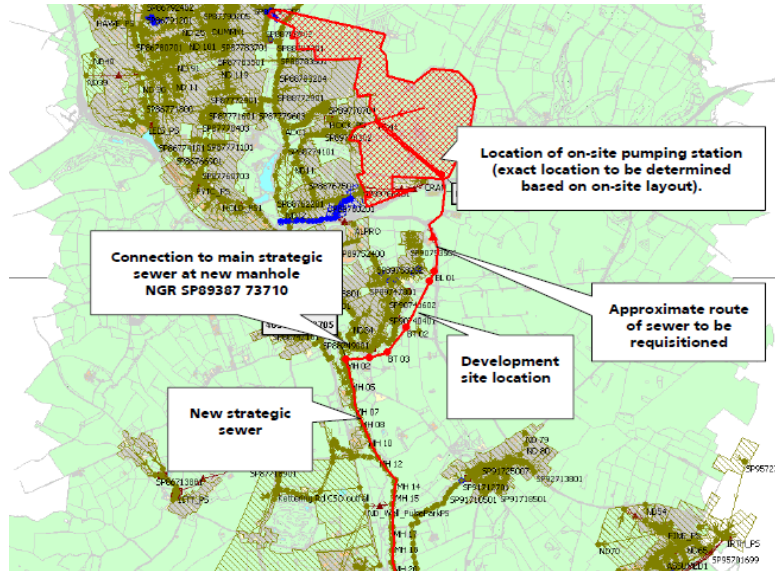
Kettering
Borough Council

Infrastructure Update

- ◆ Drainage
- ◆ Primary School
- ◆ J10/10A
- ◆ WeWaA

Kettering
Borough Council





Kettering
Borough Council

Primary School - Cranbrook



Kettering
Borough Council

Primary School - Cranbrook

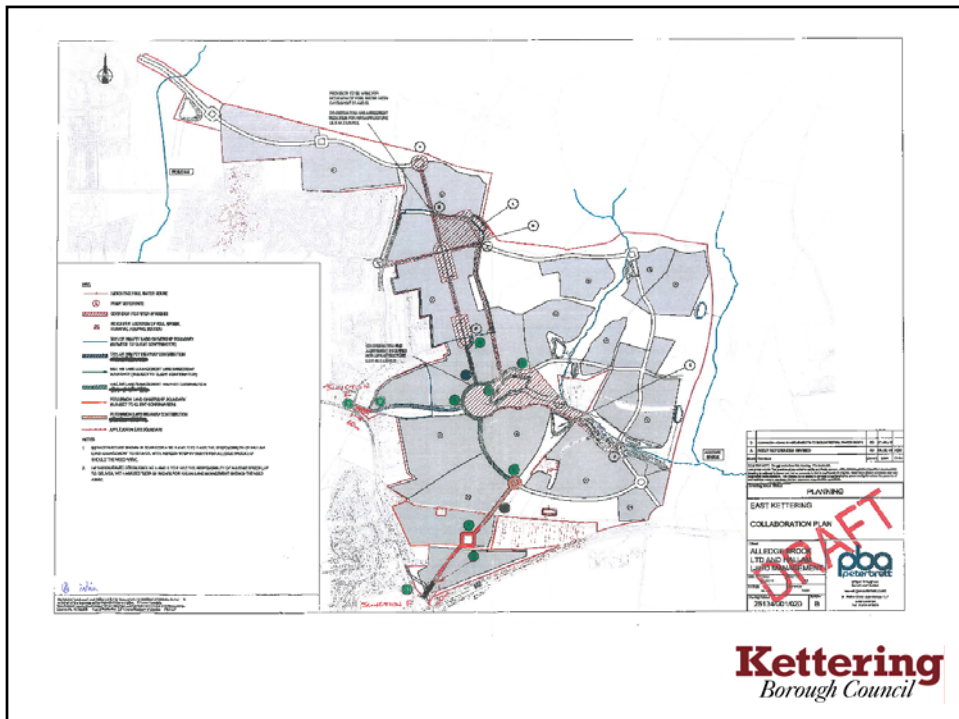


Kettering
Borough Council

Primary School - Cranbrook



Kettering
Borough Council



Housing Applications

- ◆ Hallam Land site (KET/2013/0213) – Land off Warkton Lane for 325 dwellings and associated works:
 - ◆ Revised layout and house types.
 - ◆ No. of dwellings reduced to 325 (previously 334).
 - ◆ Period of reconsultation.

- ◆ Persimmon site (KET/2013/0232) – Land off Cranford Road for 308 dwellings and associated works:
 - ◆ On-going discussions.
 - ◆ Site investigations completed by Persimmon.
 - ◆ No further details yet submitted.

Housing Applications

- ◆ Taylor Wimpey site (KET/2013/0314) - Land off Warkton Lane/Barton
 - ◆ Positive discussions.
 - ◆ Likely to be submitting/changing to a Reserved Matters application.
 - ◆ Design Workshop held.
 - ◆ Current application is for 153 dwellings. Revisions likely to increase this to up to 170.

Kettering
Borough Council

Access Applications

- ◆ Access D (AOC/0274/0803)
 - ◆ Small Roundabout proposed.
 - ◆ Junction will be reviewed during the development. To be considered by officers in more detail.
 - ◆ Traffic calming for Warkton Lane/St. Catherine's Road and Deeble Road areas is being considered by NCC.
- ◆ Access E (AOC/0274/0804 and KET/2013/0780)
 - ◆ Double Signalised Junction proposed
 - ◆ Option of double roundabouts does not work in capacity terms.

Kettering
Borough Council

Access Applications

Access F (AOC/0274/0805 and KET/2013/0792)

- ◆ Interim – Roundabout
- ◆ Final – signalised junction. Final scheme will be constructed alongside the J10a works.
- ◆ Scheme previously assessed as part of Condition 73a discharge.

Kettering
Borough Council

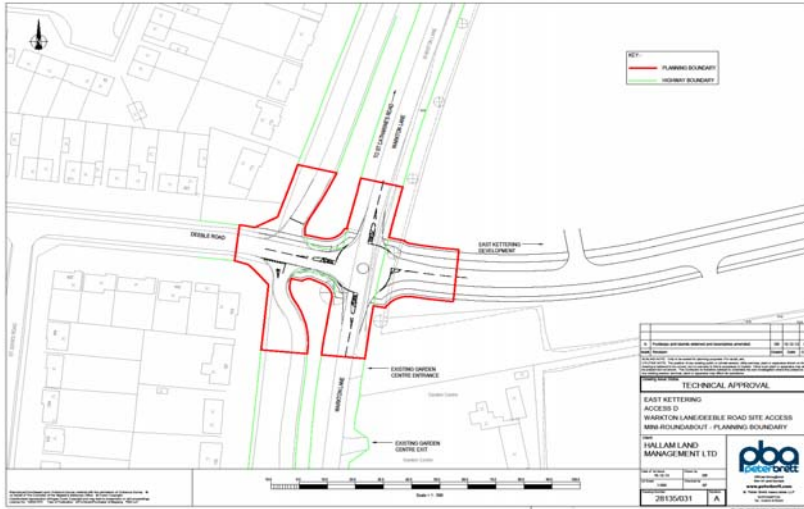
Other Applications

- ◆ Variation of Conditions 1 (KET/2013/0514) – deed required, being drafted.
- ◆ Variation of Conditions 2 (KET/2013/0695)– valid but not yet consulted upon. Technical information required before go out to consultation.
- ◆ SUDS Reserved Matters (KET/2014/0781)
- ◆ Ecology Approval of Conditions (AOC/0514/1301)

- ◆ To be submitted:
 - ◆ Primary School
 - ◆ Pre-commencement conditions
 - ◆ Any reserved matters conditions

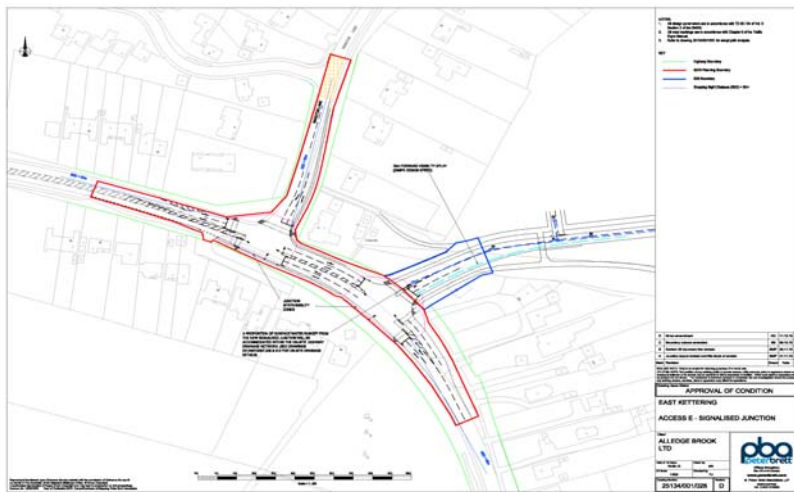
Kettering
Borough Council

Access D



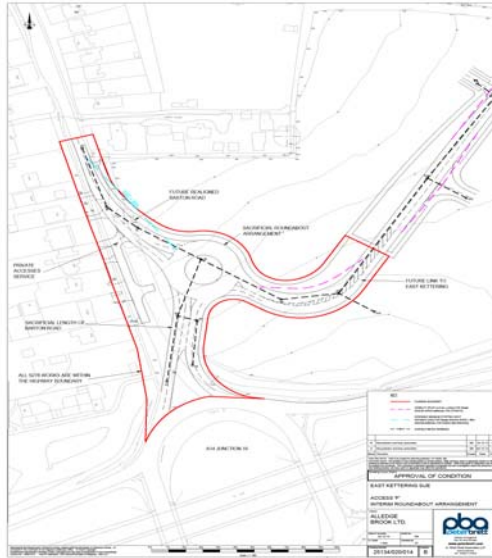
Kettering
Borough Council

Access E



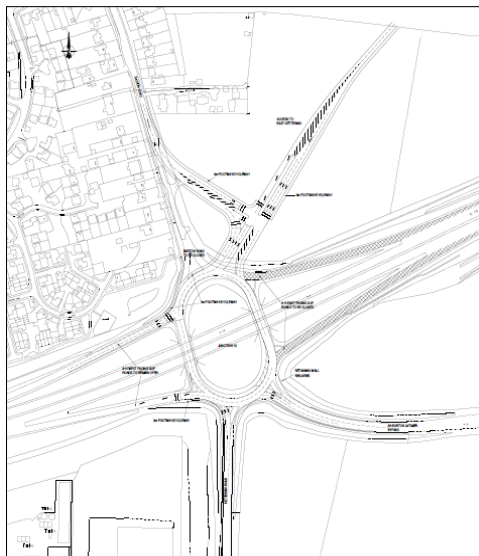
Kettering
Borough Council

Access F



Kettering
Borough Council

Access F - Final



Kettering
Borough Council