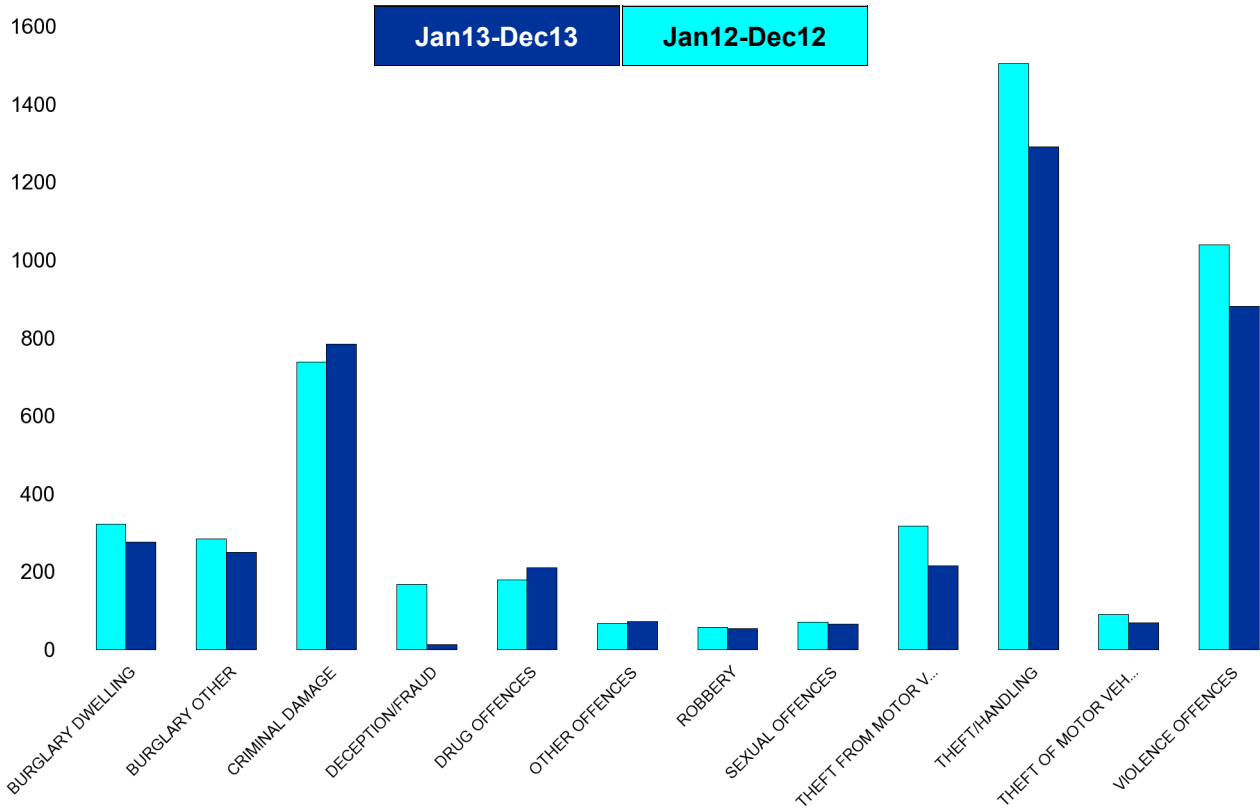


Kettering Town Forum Report

Kettering Town SCT - Crime

HO Group	No of Crimes (Jan13-Dec13)	No of Crimes (Jan12-Dec12)	+/- Crime	% Change	No of Cleared Up Crimes	Detection Rate (Past 12 Months)
BURGLARY DWELLING	277	322	-45	-14%	38	14%
BURGLARY OTHER	251	285	-34	-12%	32	13%
CRIMINAL DAMAGE	784	738	46	6%	133	17%
DECEPTION/FRAUD	14	168	-154	-92%	9	64%
DRUG OFFENCES	211	180	31	17%	190	90%
OTHER OFFENCES	72	67	5	7%	45	63%
ROBBERY	55	57	-2	-4%	13	24%
SEXUAL OFFENCES	66	71	-5	-7%	18	27%
THEFT FROM MOTOR VEHICLES	215	317	-102	-32%	13	6%
THEFT/HANDLING	1291	1505	-214	-14%	559	43%
THEFT OF MOTOR VEHICLES	69	91	-22	-24%	15	22%
VIOLENCE OFFENCES	882	1040	-158	-15%	386	44%
Sum:	4187	4841	-654	-14%	1451	35%



Kettering Town Forum Report

All Saints

HO Group	No of Crimes (Jan13-Dec13)	No of Crimes (Jan12-Dec12)	+/- Crime	% Change	No of Cleared Up Crimes	Detection Rate (Past 12 Months)
BURGLARY DWELLING	55	54	1	2%	6	11%
BURGLARY OTHER	63	54	9	17%	10	16%
CRIMINAL DAMAGE	149	160	-11	-7%	24	16%
DECEPTION/FRAUD	1	14	-13	-93%	1	100%
DRUG OFFENCES	44	39	5	13%	42	95%
OTHER OFFENCES	8	8	0	0%	5	63%
ROBBERY	14	21	-7	-33%	1	7%
SEXUAL OFFENCES	11	12	-1	-8%	4	36%
THEFT FROM MOTOR VEHICLES	41	70	-29	-41%	3	7%
THEFT/HANDLING	106	120	-14	-12%	34	32%
THEFT OF MOTOR VEHICLES	15	16	-1	-6%	2	13%
VIOLENCE OFFENCES	160	208	-48	-23%	70	44%
Sum:	667	776	-109	-14%	202	30%

240

200

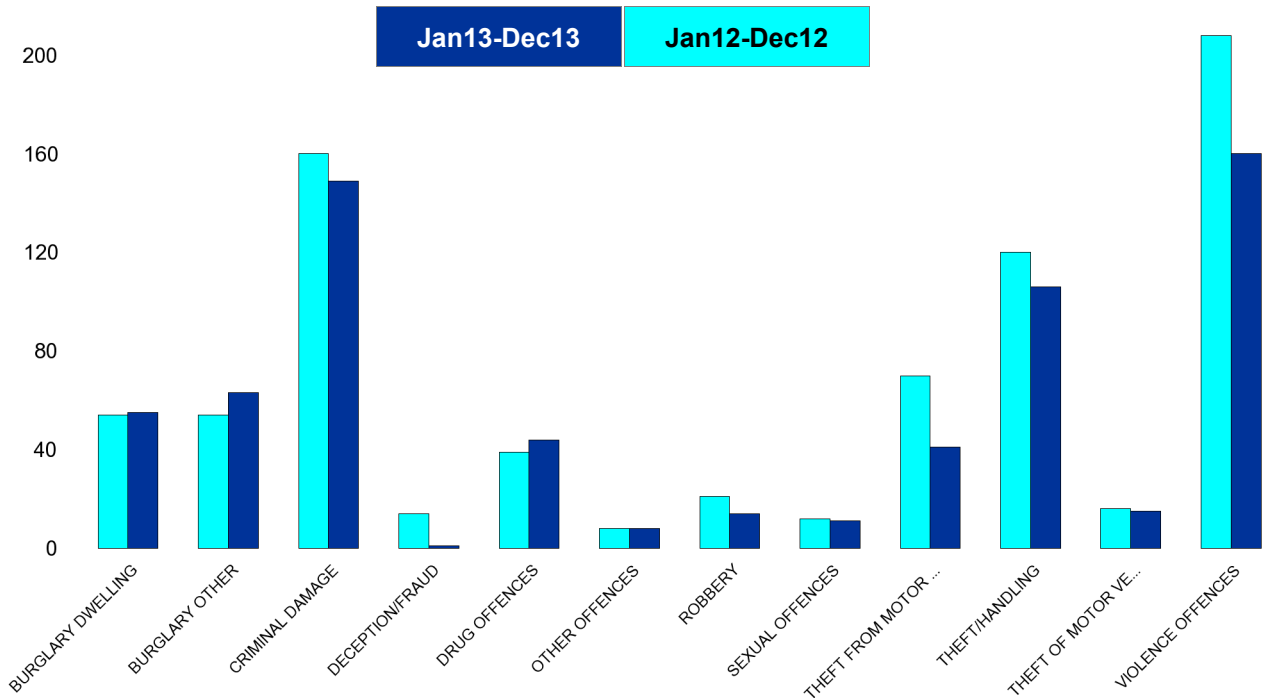
160

120

80

40

0

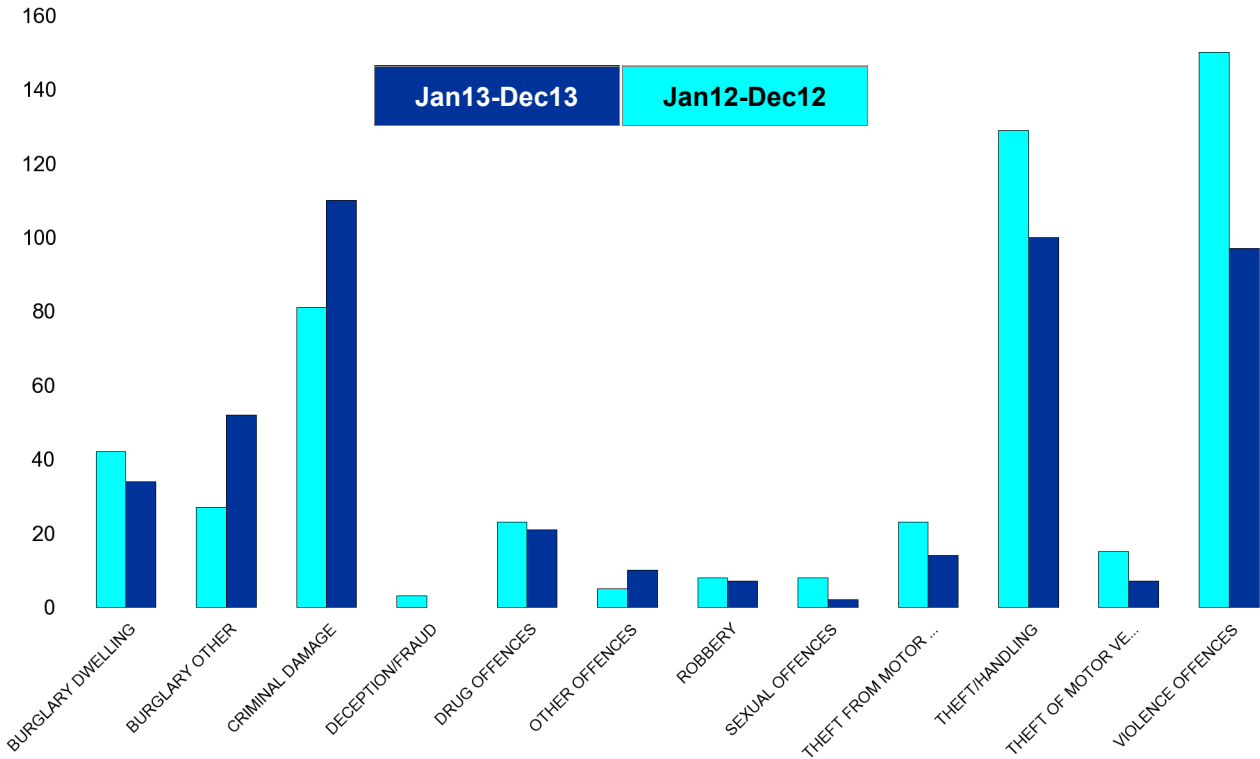


Kettering Town Forum Report

Avondale Grange

HO Group	No of Crimes (Jan13-Dec13)	No of Crimes (Jan12-Dec12)	+/- Crime	% Change
BURGLARY DWELLING	34	42	-8	-19%
BURGLARY OTHER	52	27	25	93%
CRIMINAL DAMAGE	110	81	29	36%
DECEPTION/FRAUD	0	3	-3	-100%
DRUG OFFENCES	21	23	-2	-9%
OTHER OFFENCES	10	5	5	100%
ROBBERY	7	8	-1	-13%
SEXUAL OFFENCES	2	8	-6	-75%
THEFT FROM MOTOR VEHICLES	14	23	-9	-39%
THEFT/HANDLING	100	129	-29	-22%
THEFT OF MOTOR VEHICLES	7	15	-8	-53%
VIOLENCE OFFENCES	97	150	-53	-35%
Sum:	454	514	-60	-12%

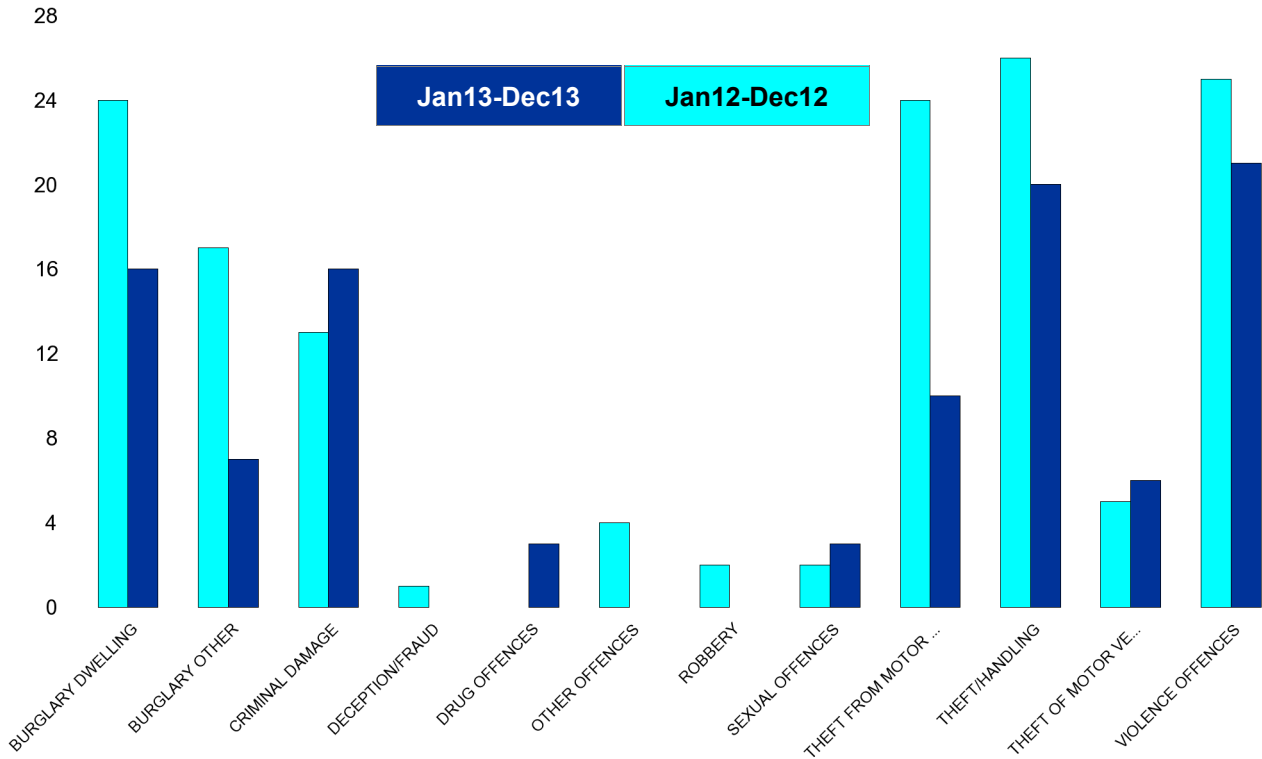
No of Cleared Up Crimes	Detection Rate (Past 12 Months)
2	6%
8	15%
11	10%
0	0%
20	95%
4	40%
0	0%
1	50%
1	7%
40	40%
1	14%
35	36%
123	27%



Kettering Town Forum Report

Brambleside

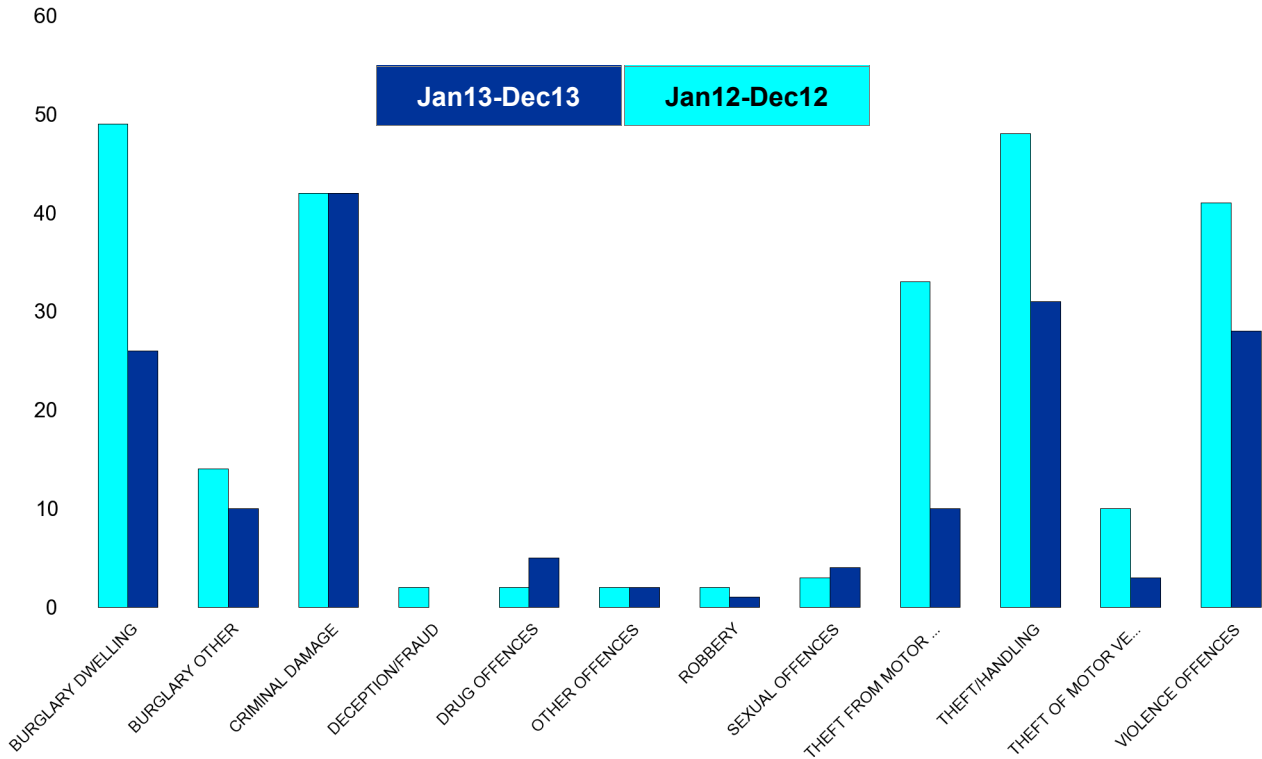
HO Group	No of Crimes (Jan13-Dec13)	No of Crimes (Jan12-Dec12)	+/- Crime	% Change	No of Cleared Up Crimes	Detection Rate (Past 12 Months)
BURGLARY DWELLING	16	24	-8	-33%	6	38%
BURGLARY OTHER	7	17	-10	-59%	0	0%
CRIMINAL DAMAGE	16	13	3	23%	1	6%
DECEPTION/FRAUD	0	1	-1	-100%	1	0%
DRUG OFFENCES	3	0	3	0%	2	67%
OTHER OFFENCES	0	4	-4	-100%	1	0%
ROBBERY	0	2	-2	-100%	0	0%
SEXUAL OFFENCES	3	2	1	50%	0	0%
THEFT FROM MOTOR VEHICLES	10	24	-14	-58%	0	0%
THEFT/HANDLING	20	26	-6	-23%	12	60%
THEFT OF MOTOR VEHICLES	6	5	1	20%	2	33%
VIOLENCE OFFENCES	21	25	-4	-16%	2	10%
Sum:	102	143	-41	-29%	27	26%



Kettering Town Forum Report

Ise Lodge

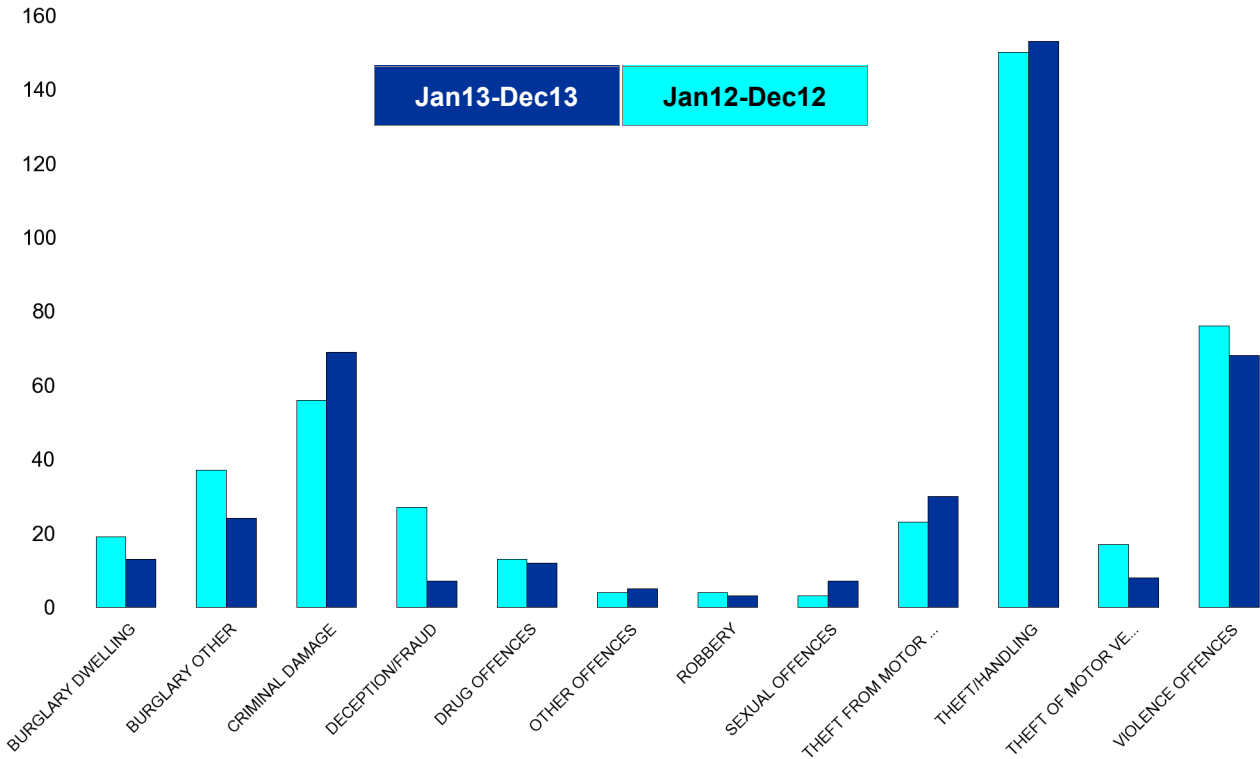
HO Group	No of Crimes (Jan13-Dec13)	No of Crimes (Jan12-Dec12)	+/- Crime	% Change	No of Cleared Up Crimes	Detection Rate (Past 12 Months)
BURGLARY DWELLING	26	49	-23	-47%	6	23%
BURGLARY OTHER	10	14	-4	-29%	0	0%
CRIMINAL DAMAGE	42	42	0	0%	2	5%
DECEPTION/FRAUD	0	2	-2	-100%	0	0%
DRUG OFFENCES	5	2	3	150%	3	60%
OTHER OFFENCES	2	2	0	0%	1	50%
ROBBERY	1	2	-1	-50%	0	0%
SEXUAL OFFENCES	4	3	1	33%	0	0%
THEFT FROM MOTOR VEHICLES	10	33	-23	-70%	2	20%
THEFT/HANDLING	31	48	-17	-35%	16	52%
THEFT OF MOTOR VEHICLES	3	10	-7	-70%	0	0%
VIOLENCE OFFENCES	28	41	-13	-32%	8	29%
Sum:	162	248	-86	-35%	38	23%



Kettering Town Forum Report

Northfield

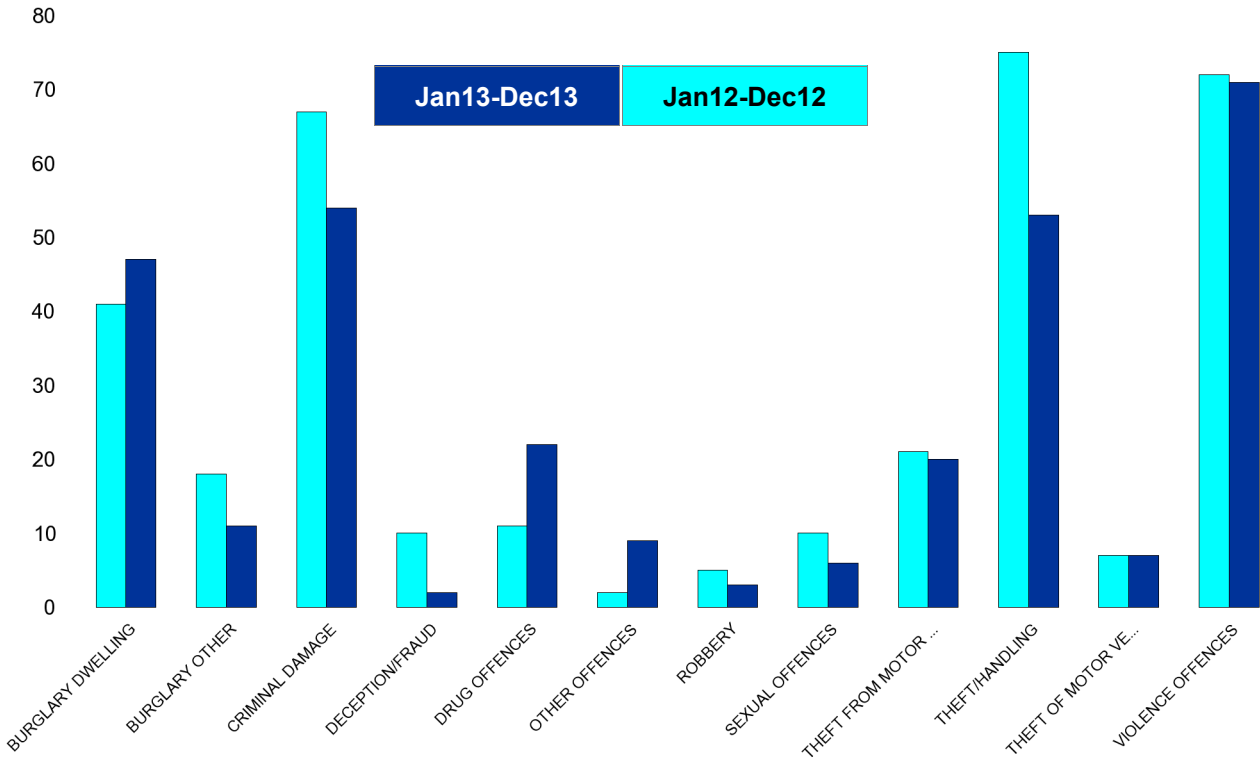
HO Group	No of Crimes (Jan13-Dec13)	No of Crimes (Jan12-Dec12)	+/- Crime	% Change	No of Cleared Up Crimes	Detection Rate (Past 12 Months)
BURGLARY DWELLING	13	19	-6	-32%	4	31%
BURGLARY OTHER	24	37	-13	-35%	2	8%
CRIMINAL DAMAGE	69	56	13	23%	14	20%
DECEPTION/FRAUD	7	27	-20	-74%	1	14%
DRUG OFFENCES	12	13	-1	-8%	9	75%
OTHER OFFENCES	5	4	1	25%	2	40%
ROBBERY	3	4	-1	-25%	2	67%
SEXUAL OFFENCES	7	3	4	133%	0	0%
THEFT FROM MOTOR VEHICLES	30	23	7	30%	1	3%
THEFT/HANDLING	153	150	3	2%	70	46%
THEFT OF MOTOR VEHICLES	8	17	-9	-53%	1	13%
VIOLENCE OFFENCES	68	76	-8	-11%	31	46%
Sum:	399	429	-30	-7%	137	34%



Kettering Town Forum Report

Pipers Hill

HO Group	No of Crimes (Jan13-Dec13)	No of Crimes (Jan12-Dec12)	+/- Crime	% Change	No of Cleared Up Crimes	Detection Rate (Past 12 Months)
BURGLARY DWELLING	47	41	6	15%	6	13%
BURGLARY OTHER	11	18	-7	-39%	0	0%
CRIMINAL DAMAGE	54	67	-13	-19%	6	11%
DECEPTION/FRAUD	2	10	-8	-80%	1	50%
DRUG OFFENCES	22	11	11	100%	20	91%
OTHER OFFENCES	9	2	7	350%	4	44%
ROBBERY	3	5	-2	-40%	1	33%
SEXUAL OFFENCES	6	10	-4	-40%	4	67%
THEFT FROM MOTOR VEHICLES	20	21	-1	-5%	1	5%
THEFT/HANDLING	53	75	-22	-29%	14	26%
THEFT OF MOTOR VEHICLES	7	7	0	0%	2	29%
VIOLENCE OFFENCES	71	72	-1	-1%	27	38%
Sum:	305	339	-34	-10%	86	28%

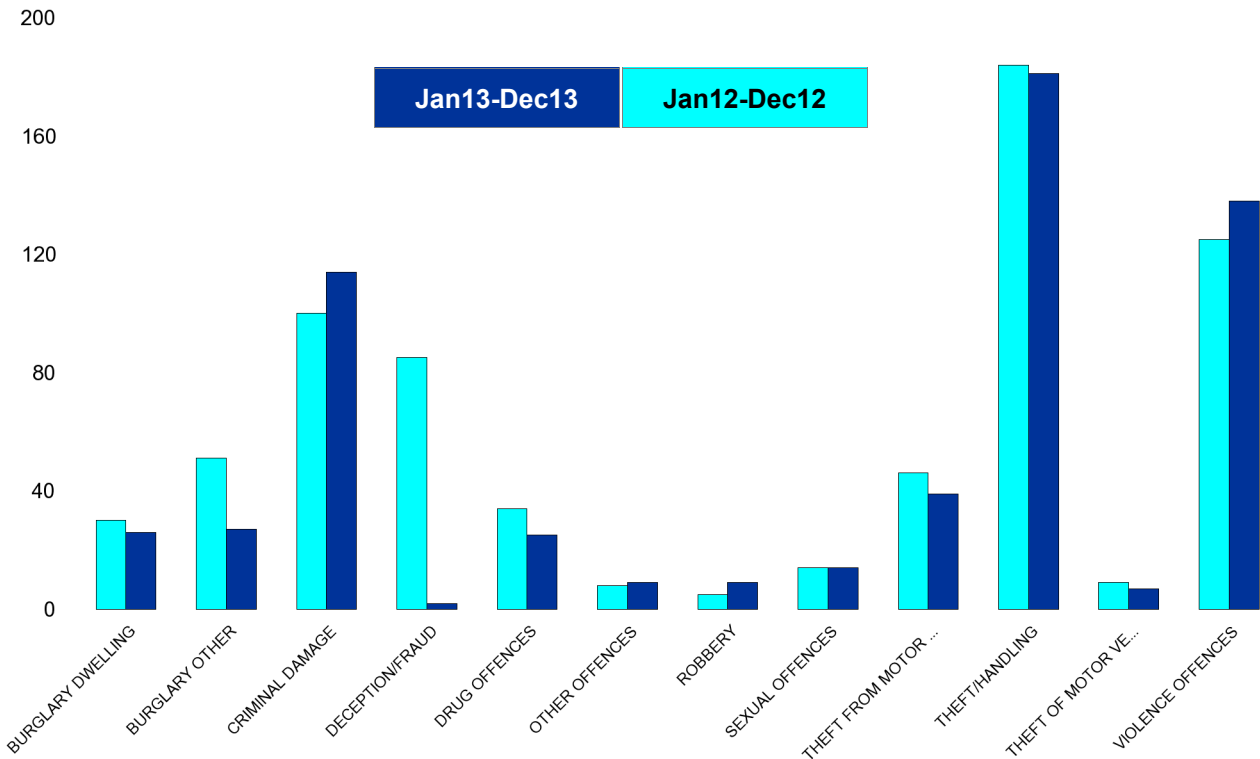


Kettering Town Forum Report

St Michaels and Wicksteed

HO Group	No of Crimes (Jan13-Dec13)	No of Crimes (Jan12-Dec12)	+/- Crime	% Change
BURGLARY DWELLING	26	30	-4	-13%
BURGLARY OTHER	27	51	-24	-47%
CRIMINAL DAMAGE	114	100	14	14%
DECEPTION/FRAUD	2	85	-83	-98%
DRUG OFFENCES	25	34	-9	-26%
OTHER OFFENCES	9	8	1	13%
ROBBERY	9	5	4	80%
SEXUAL OFFENCES	14	14	0	0%
THEFT FROM MOTOR VEHICLES	39	46	-7	-15%
THEFT/HANDLING	181	184	-3	-2%
THEFT OF MOTOR VEHICLES	7	9	-2	-22%
VIOLENCE OFFENCES	138	125	13	10%
Sum:	591	691	-100	-14%

No of Cleared Up Crimes	Detection Rate (Past 12 Months)
2	8%
7	26%
30	26%
2	100%
22	88%
9	100%
3	33%
8	57%
2	5%
59	33%
2	29%
58	42%
204	35%

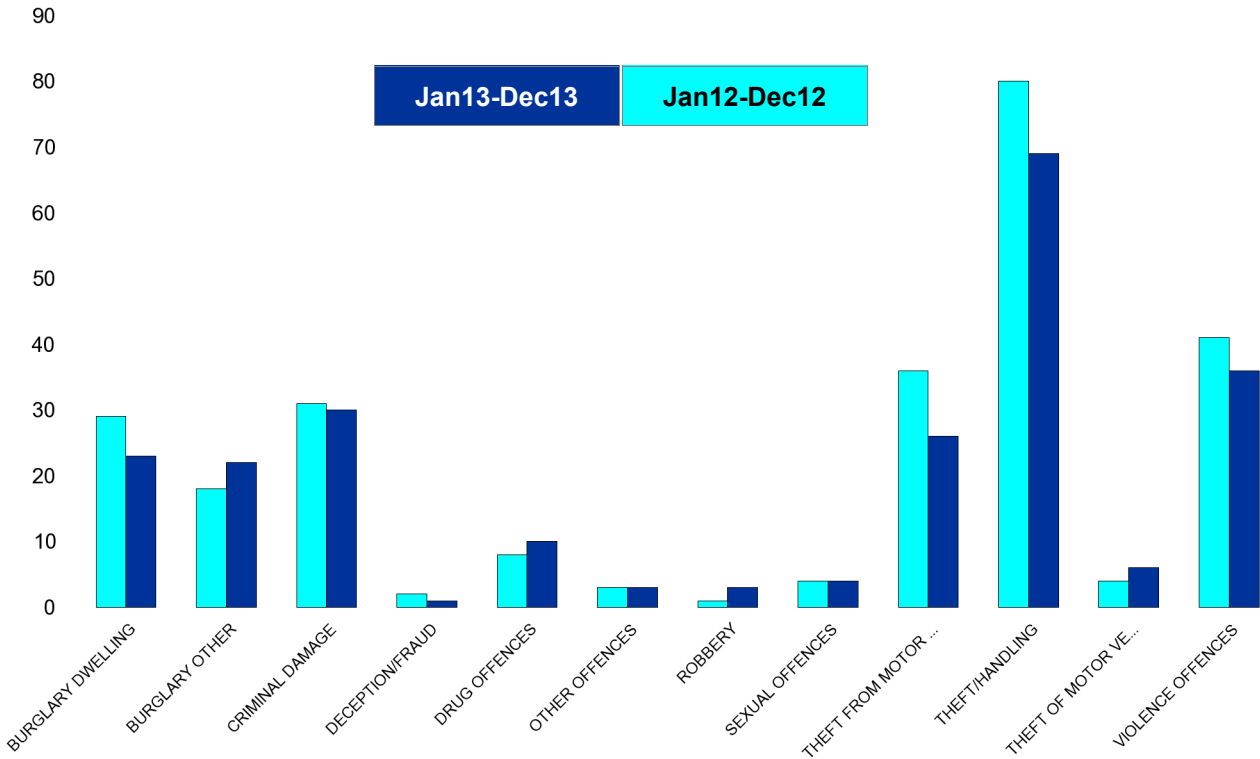


Kettering Town Forum Report

St Peters

HO Group	No of Crimes (Jan13-Dec13)	No of Crimes (Jan12-Dec12)	+/- Crime	% Change
BURGLARY DWELLING	23	29	-6	-21%
BURGLARY OTHER	22	18	4	22%
CRIMINAL DAMAGE	30	31	-1	-3%
DECEPTION/FRAUD	1	2	-1	-50%
DRUG OFFENCES	10	8	2	25%
OTHER OFFENCES	3	3	0	0%
ROBBERY	3	1	2	200%
SEXUAL OFFENCES	4	4	0	0%
THEFT FROM MOTOR VEHICLES	26	36	-10	-28%
THEFT/HANDLING	69	80	-11	-14%
THEFT OF MOTOR VEHICLES	6	4	2	50%
VIOLENCE OFFENCES	36	41	-5	-12%
Sum:	233	257	-24	-9%

No of Cleared Up Crimes	Detection Rate (Past 12 Months)
1	4%
0	0%
5	17%
0	0%
8	80%
3	100%
0	0%
0	0%
1	4%
13	19%
3	50%
18	50%
52	22%

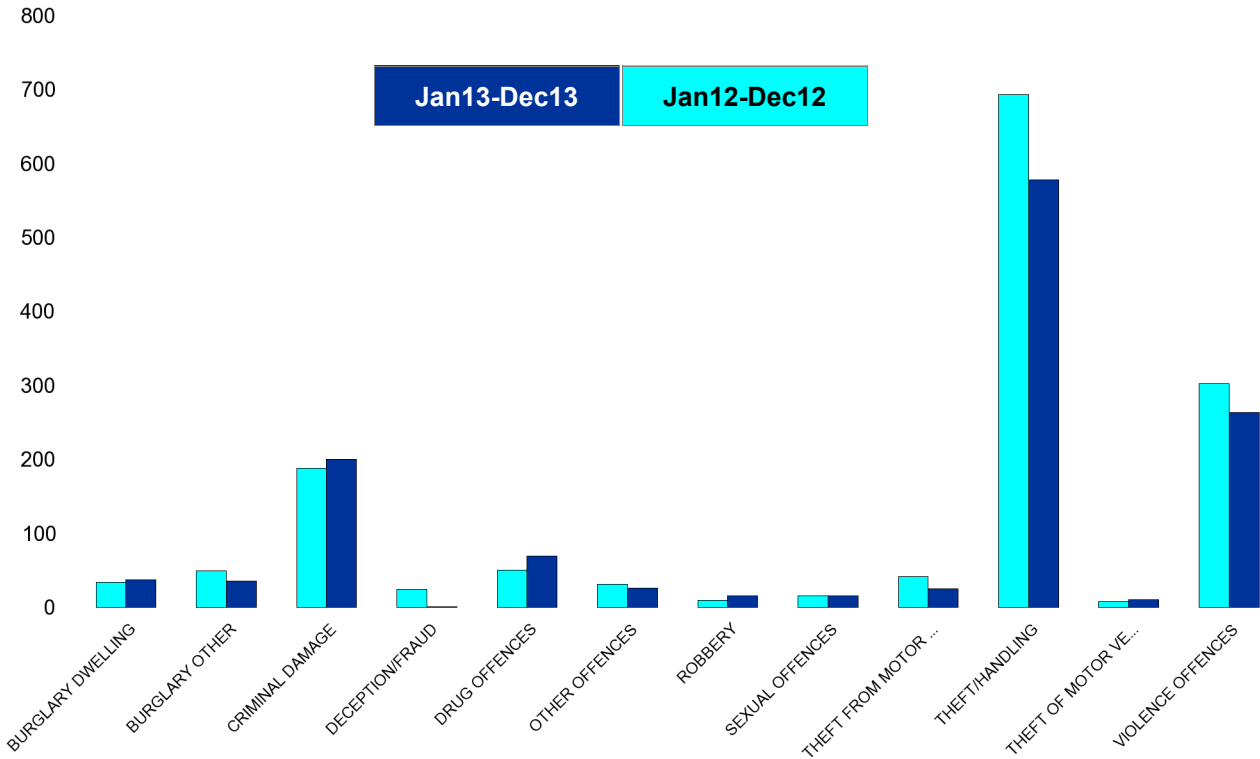


Kettering Town Forum Report

William Knibb

HO Group	No of Crimes (Jan13-Dec13)	No of Crimes (Jan12-Dec12)	+/- Crime	% Change
BURGLARY DWELLING	37	34	3	9%
BURGLARY OTHER	35	49	-14	-29%
CRIMINAL DAMAGE	200	188	12	6%
DECEPTION/FRAUD	1	24	-23	-96%
DRUG OFFENCES	69	50	19	38%
OTHER OFFENCES	26	31	-5	-16%
ROBBERY	15	9	6	67%
SEXUAL OFFENCES	15	15	0	0%
THEFT FROM MOTOR VEHICLES	25	41	-16	-39%
THEFT/HANDLING	578	693	-115	-17%
THEFT OF MOTOR VEHICLES	10	8	2	25%
VIOLENCE OFFENCES	263	302	-39	-13%
Sum:	1274	1444	-170	-12%

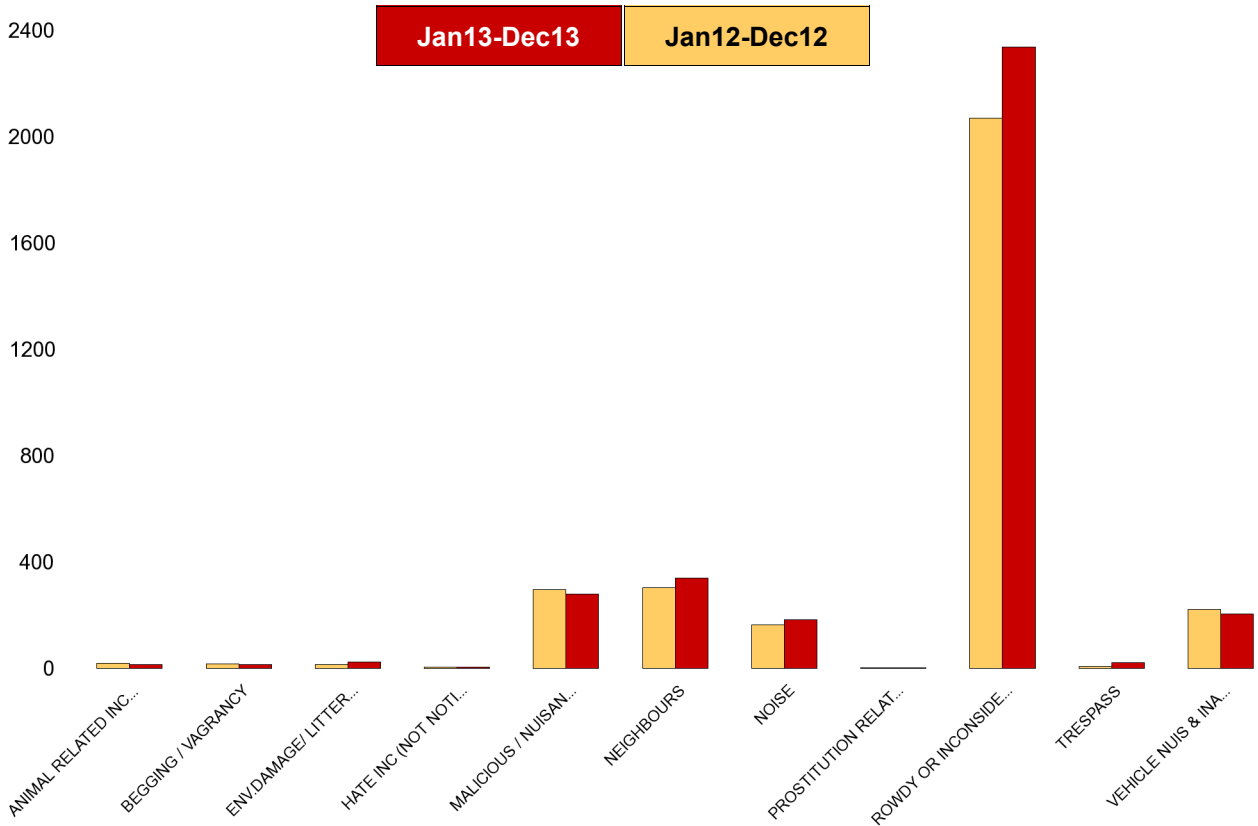
No of Cleared Up Crimes	Detection Rate (Past 12 Months)
5	14%
5	14%
40	20%
3	300%
64	93%
16	62%
6	40%
1	7%
2	8%
301	52%
2	20%
137	52%
582	46%



Kettering Town Forum Report

Kettering Town SCT - ASB

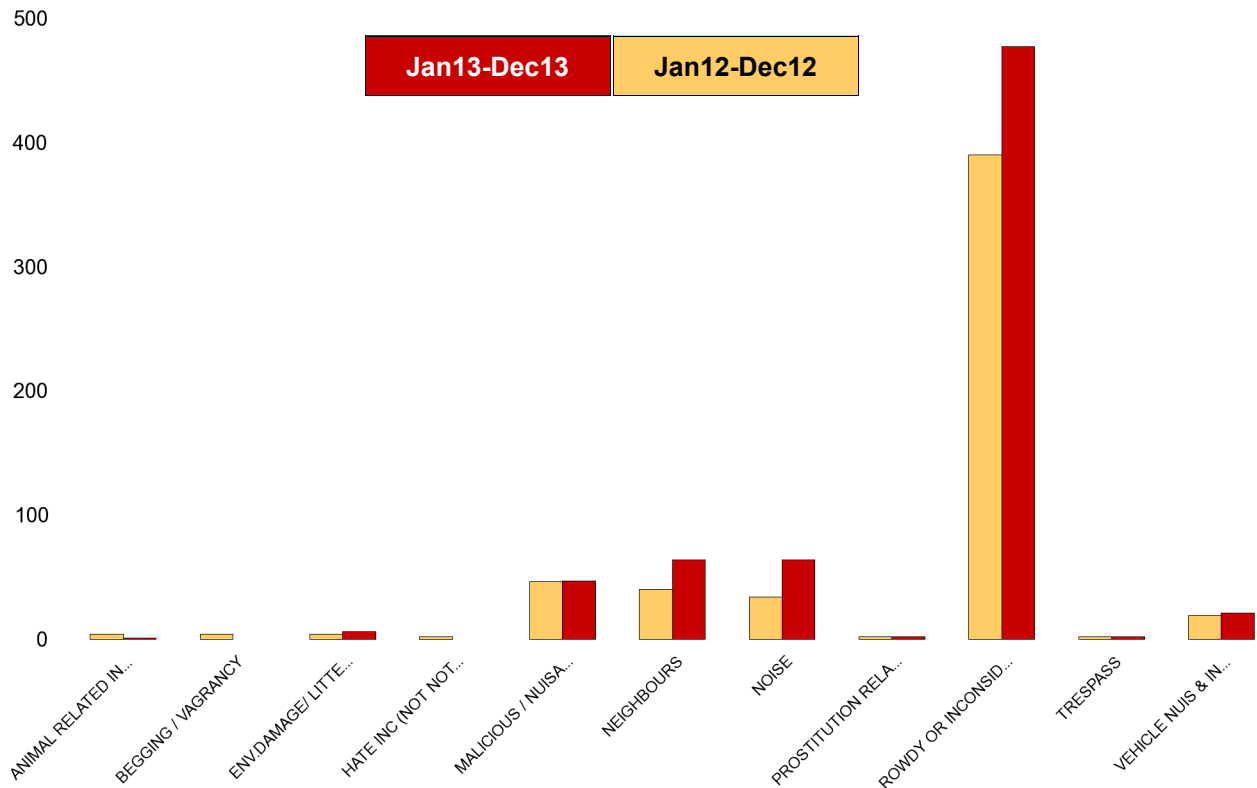
NSIR Closing Cat. 1 Desc	No of Incidents (Jan13-Dec13)	No of Incidents (Jan12-Dec12)	+/- Incidents	% Change Incidents
ANIMAL RELATED INC ANTI-SOCIAL	15	21	-6	-29%
BEGGING / VAGRANCY	16	18	-2	-11%
ENV.DAMAGE/ LITTER/ NEEDLES	25	15	10	67%
HATE INC (NOT NOTIFIABLE CRIME	7	6	1	17%
MALICIOUS / NUISANCE COMMS	280	298	-18	-6%
NEIGHBOURS	342	304	38	13%
NOISE	184	165	19	12%
PROSTITUTION RELATED ACTIVITY	4	3	1	33%
ROWDY OR INCONSIDERATE BEHAV	2339	2071	268	13%
TRESPASS	24	8	16	200%
VEHICLE NUIS & INAPPROP VEH US	207	224	-17	-8%
Sum:	3443	3133	310	10%



Kettering Town Forum Report

All Saints

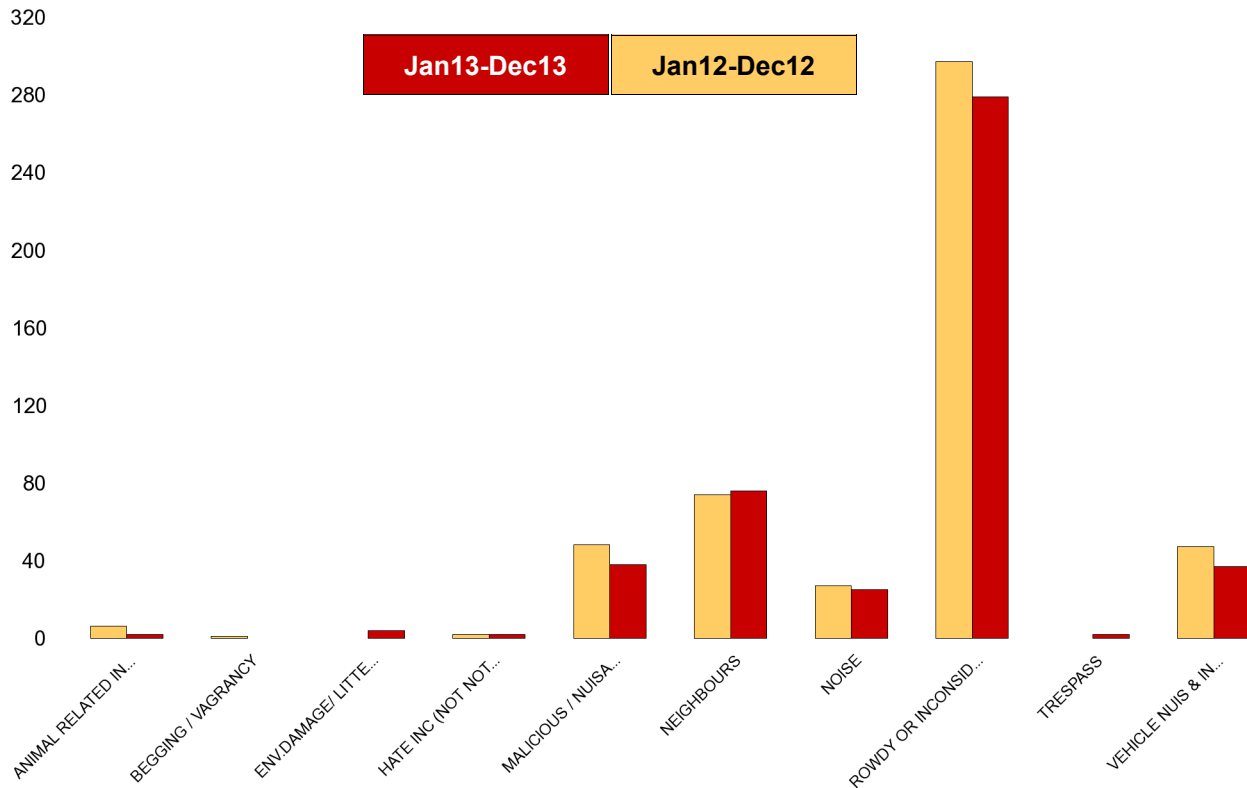
NSIR Closing Cat. 1 Desc	No of Incidents (Jan13-Dec13)	No of Incidents (Jan12-Dec12)	+/- Incidents	% Change Incidents
ANIMAL RELATED INC ANTI-SOCIAL	1	4	-3	-75%
BEGGING / VAGRANCY	0	4	-4	-100%
ENV.DAMAGE/ LITTER/ NEEDLES	6	4	2	50%
HATE INC (NOT NOTIFIABLE CRIME	0	2	-2	-100%
MALICIOUS / NUISANCE COMMS	47	46	1	2%
NEIGHBOURS	64	40	24	60%
NOISE	64	34	30	88%
PROSTITUTION RELATED ACTIVITY	2	2	0	0%
ROWDY OR INCONSIDERATE BEHAV	477	390	87	22%
TRESPASS	2	2	0	0%
VEHICLE NUIS & INAPPROP VEH US	21	19	2	11%
Sum:	684	547	137	25%



Kettering Town Forum Report

Avondale Grange

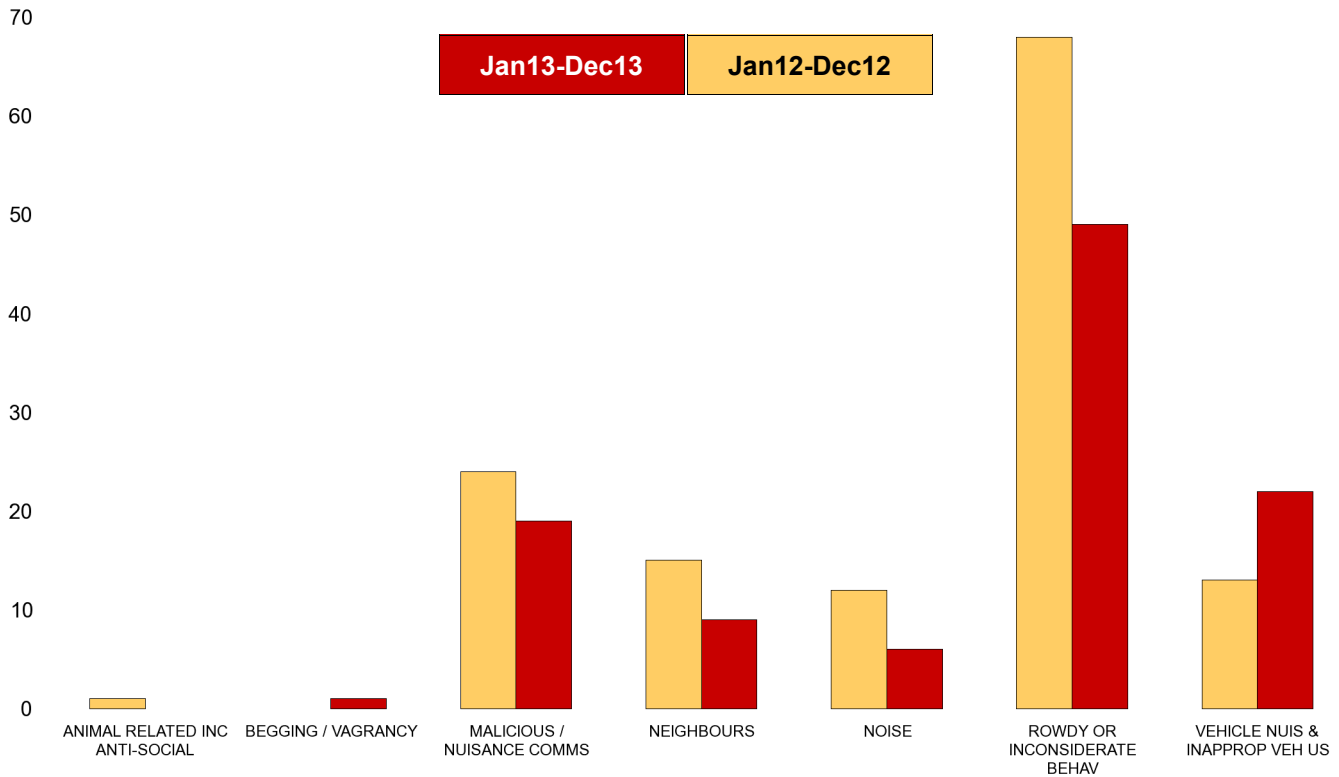
NSIR Closing Cat. 1 Desc	No of Incidents (Jan13-Dec13)	No of Incidents (Jan12-Dec12)	+/- Incidents	% Change Incidents
ANIMAL RELATED INC ANTI-SOCIAL	2	6	-4	-67%
BEGGING / VAGRANCY	0	1	-1	-100%
ENV.DAMAGE/ LITTER/ NEEDLES	4	0	4	0%
HATE INC (NOT NOTIFIABLE CRIME	2	2	0	0%
MALICIOUS / NUISANCE COMMS	38	48	-10	-21%
NEIGHBOURS	76	74	2	3%
NOISE	25	27	-2	-7%
ROWDY OR INCONSIDERATE BEHAV	279	297	-18	-6%
TRESPASS	2	0	2	0%
VEHICLE NUIS & INAPPROP VEH US	37	47	-10	-21%
Sum:	465	502	-37	-7%



Kettering Town Forum Report

Brambleside

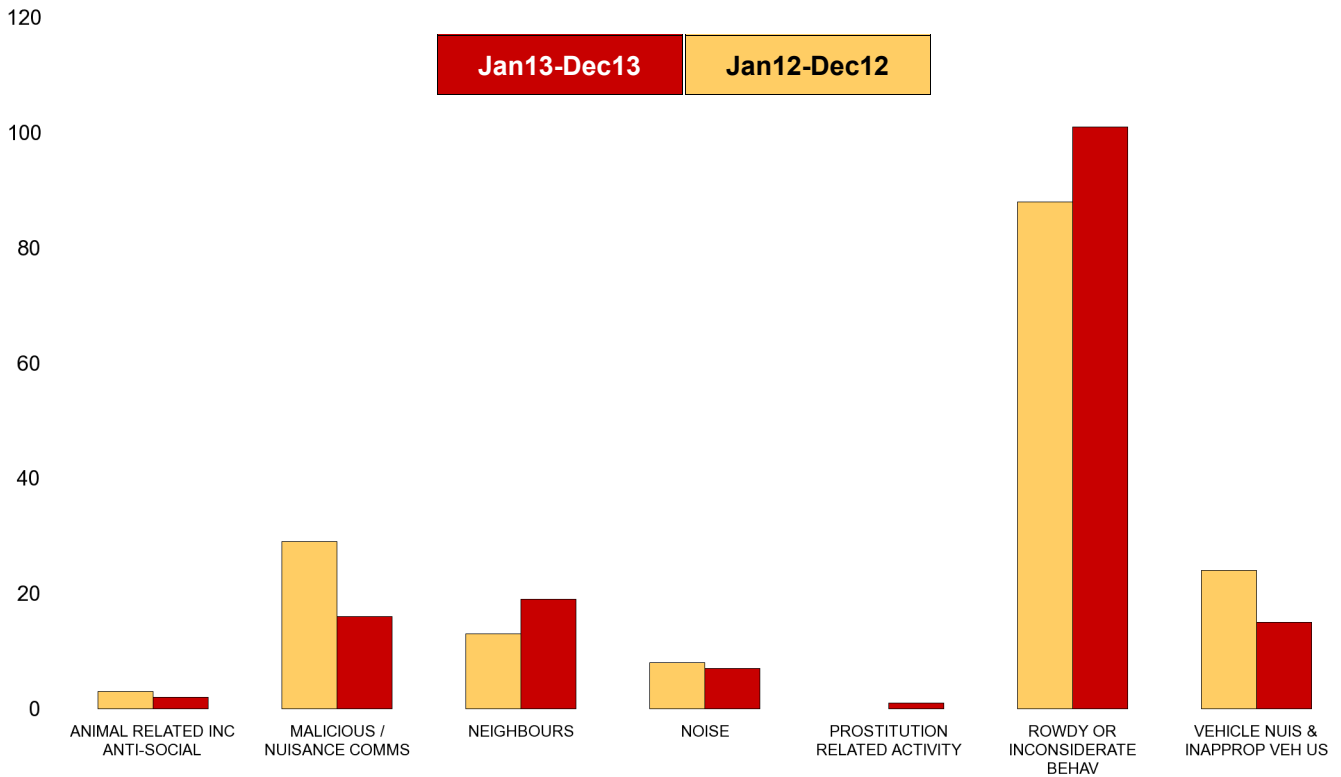
NSIR Closing Cat. 1 Desc	No of Incidents (Jan13-Dec13)	No of Incidents (Jan12-Dec12)	+/- Incidents	% Change Incidents
ANIMAL RELATED INC ANTI-SOCIAL	0	1	-1	-100%
BEGGING / VAGRANCY	1	0	1	0%
MALICIOUS / NUISANCE COMMS	19	24	-5	-21%
NEIGHBOURS	9	15	-6	-40%
NOISE	6	12	-6	-50%
ROWDY OR INCONSIDERATE BEHAV	49	68	-19	-28%
VEHICLE NUIS & INAPPROP VEH US	22	13	9	69%
Sum:	106	133	-27	-20%



Kettering Town Forum Report

Ise Lodge

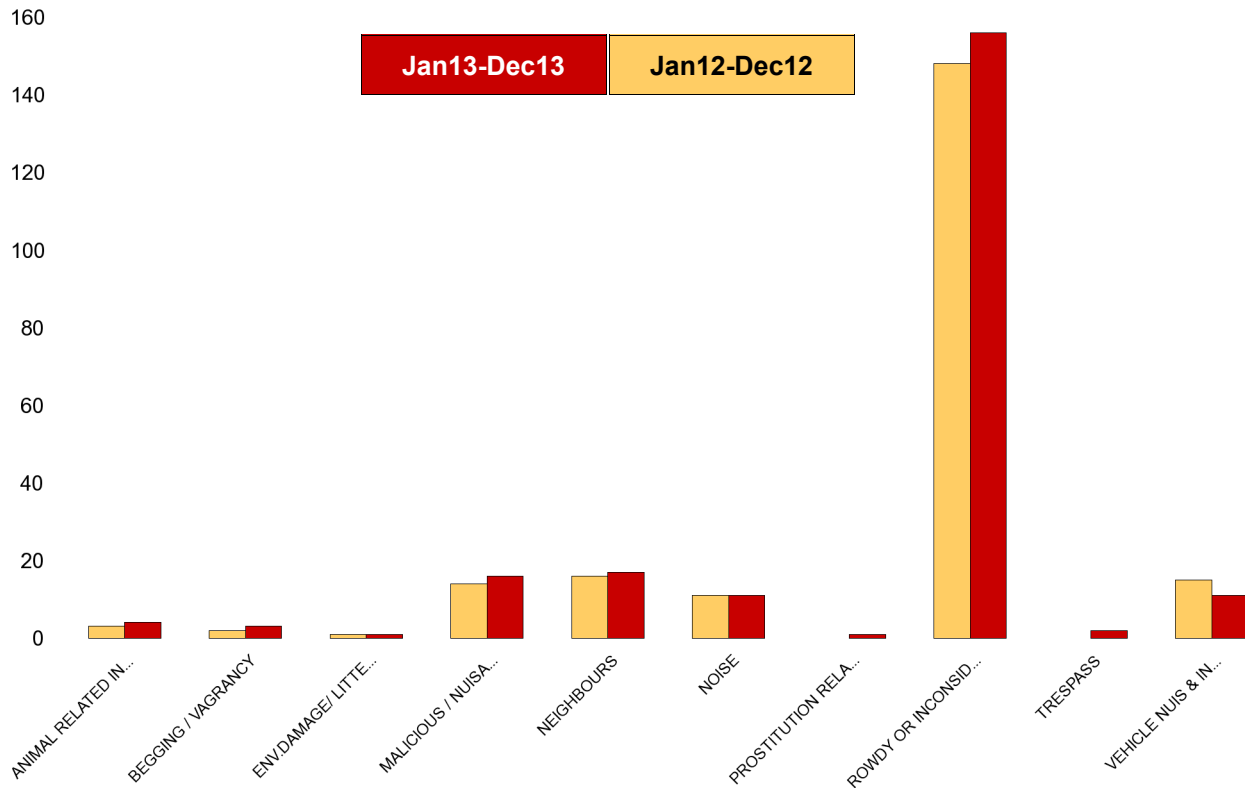
NSIR Closing Cat. 1 Desc	No of Incidents (Jan13-Dec13)	No of Incidents (Jan12-Dec12)	+/- Incidents	% Change Incidents
ANIMAL RELATED INC ANTI-SOCIAL	2	3	-1	-33%
MALICIOUS / NUISANCE COMMS	16	29	-13	-45%
NEIGHBOURS	19	13	6	46%
NOISE	7	8	-1	-13%
PROSTITUTION RELATED ACTIVITY	1	0	1	0%
ROWDY OR INCONSIDERATE BEHAV	101	88	13	15%
VEHICLE NUIS & INAPPROP VEH US	15	24	-9	-38%
Sum:	161	165	-4	-2%



Kettering Town Forum Report

Northfield

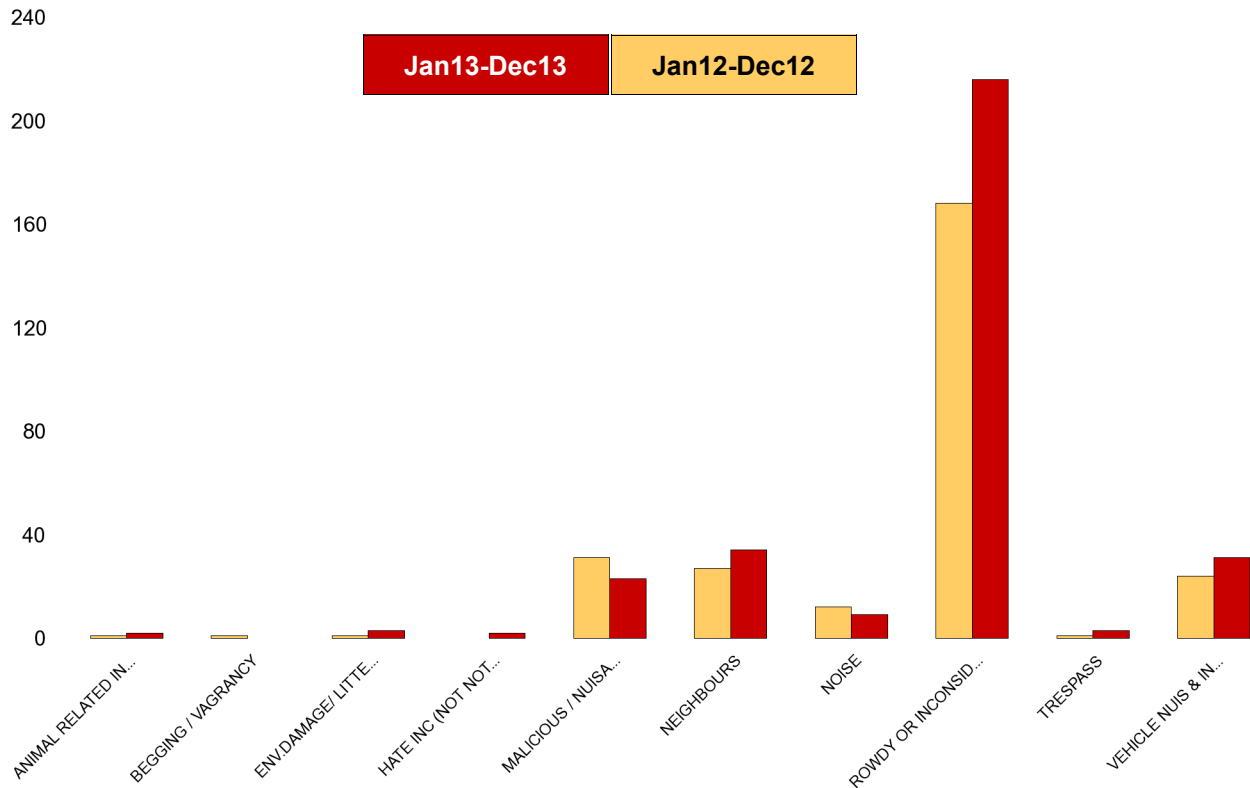
NSIR Closing Cat. 1 Desc	No of Incidents (Jan13-Dec13)	No of Incidents (Jan12-Dec12)	+/- Incidents	% Change Incidents
ANIMAL RELATED INC ANTI-SOCIAL	4	3	1	33%
BEGGING / VAGRANCY	3	2	1	50%
ENV.DAMAGE/ LITTER/ NEEDLES	1	1	0	0%
MALICIOUS / NUISANCE COMMS	16	14	2	14%
NEIGHBOURS	17	16	1	6%
NOISE	11	11	0	0%
PROSTITUTION RELATED ACTIVITY	1	0	1	0%
ROWDY OR INCONSIDERATE BEHAV	156	148	8	5%
TRESPASS	2	0	2	0%
VEHICLE NUIS & INAPPROP VEH US	11	15	-4	-27%
Sum:	222	210	12	6%



Kettering Town Forum Report

Pipers Hill

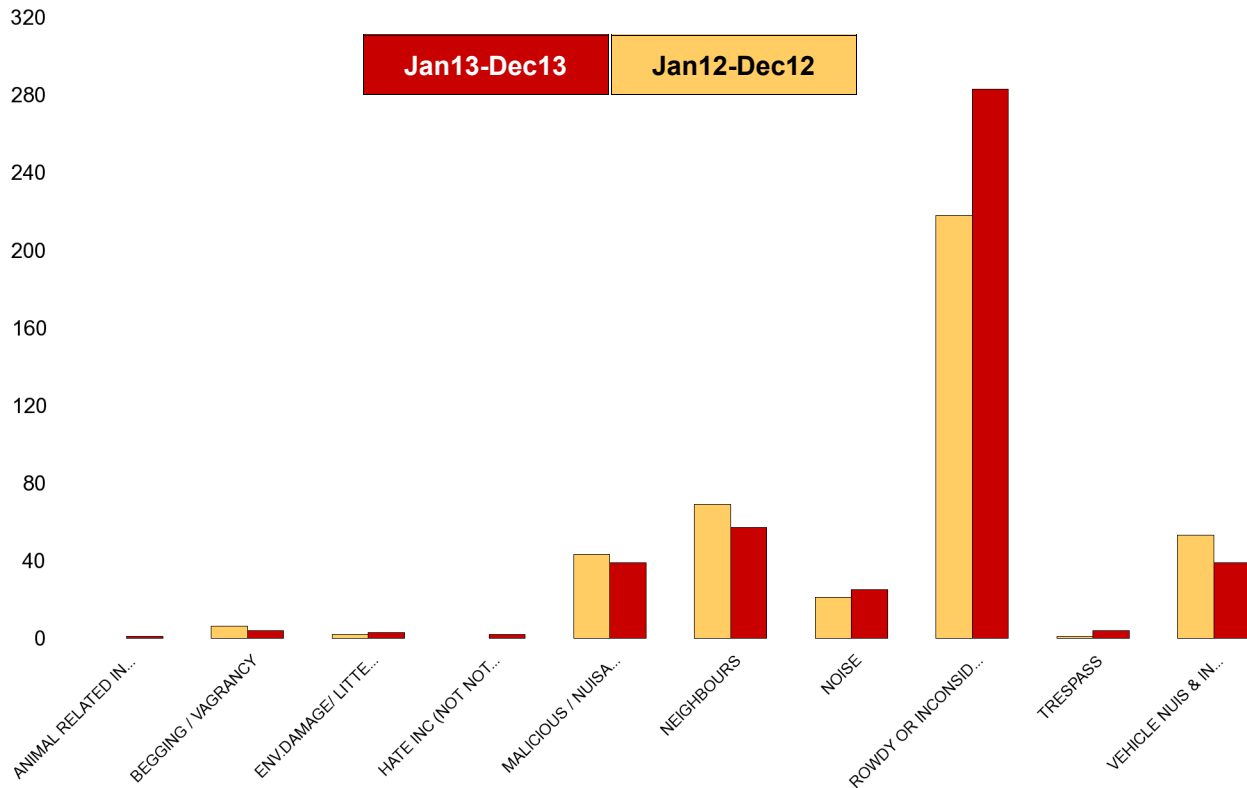
NSIR Closing Cat. 1 Desc	No of Incidents (Jan13-Dec13)	No of Incidents (Jan12-Dec12)	+/- Incidents	% Change Incidents
ANIMAL RELATED INC ANTI-SOCIAL	2	1	1	100%
BEGGING / VAGRANCY	0	1	-1	-100%
ENV.DAMAGE/ LITTER/ NEEDLES	3	1	2	200%
HATE INC (NOT NOTIFIABLE CRIME	2	0	2	0%
MALICIOUS / NUISANCE COMMS	23	31	-8	-26%
NEIGHBOURS	34	27	7	26%
NOISE	9	12	-3	-25%
ROWDY OR INCONSIDERATE BEHAV	216	168	48	29%
TRESPASS	3	1	2	200%
VEHICLE NUIS & INAPPROP VEH US	31	24	7	29%
Sum:	323	266	57	21%



Kettering Town Forum Report

St Michaels and Wicksteed

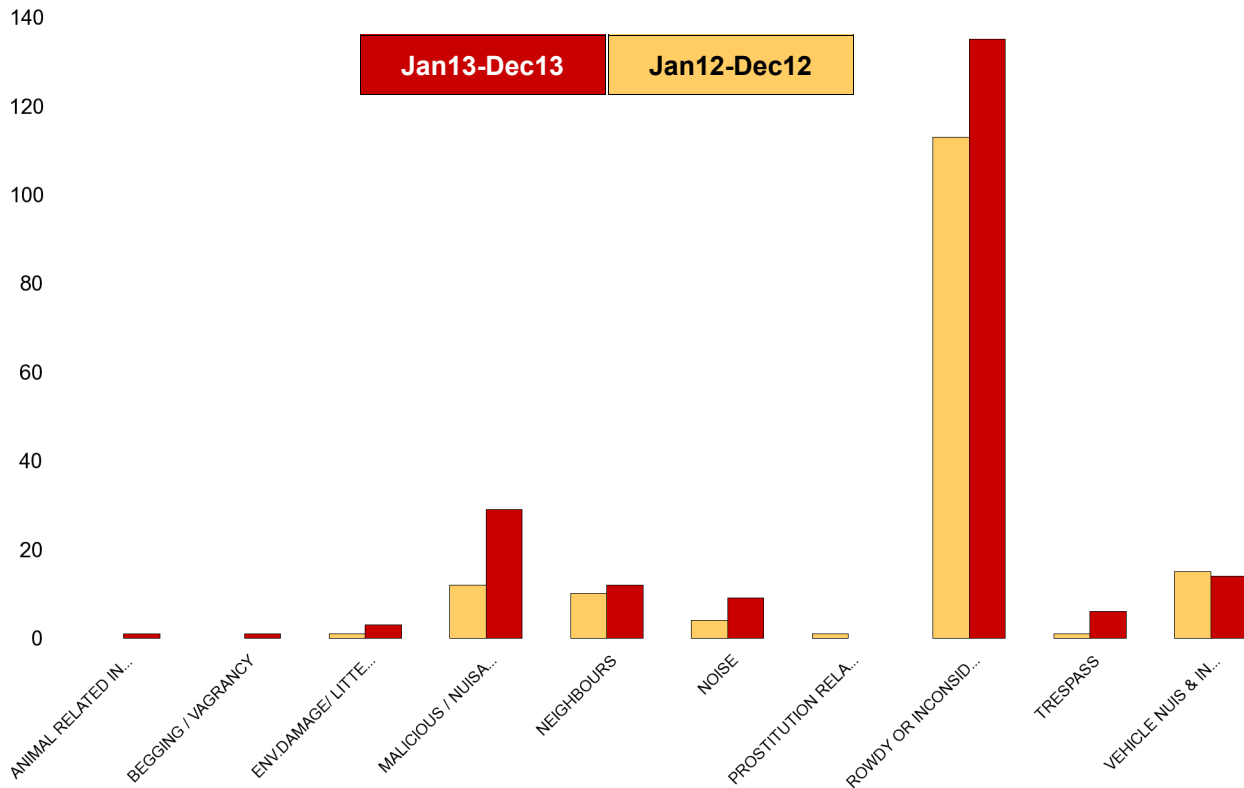
NSIR Closing Cat. 1 Desc	No of Incidents (Jan13-Dec13)	No of Incidents (Jan12-Dec12)	+/- Incidents	% Change Incidents
ANIMAL RELATED INC ANTI-SOCIAL	1	0	1	0%
BEGGING / VAGRANCY	4	6	-2	-33%
ENV.DAMAGE/ LITTER/ NEEDLES	3	2	1	50%
HATE INC (NOT NOTIFIABLE CRIME	2	0	2	0%
MALICIOUS / NUISANCE COMMS	39	43	-4	-9%
NEIGHBOURS	57	69	-12	-17%
NOISE	25	21	4	19%
ROWDY OR INCONSIDERATE BEHAV	283	218	65	30%
TRESPASS	4	1	3	300%
VEHICLE NUIS & INAPPROP VEH US	39	53	-14	-26%
Sum:	457	413	44	11%



Kettering Town Forum Report

St Peters

NSIR Closing Cat. 1 Desc	No of Incidents (Jan13-Dec13)	No of Incidents (Jan12-Dec12)	+/- Incidents	% Change Incidents
ANIMAL RELATED INC ANTI-SOCIAL	1	0	1	0%
BEGGING / VAGRANCY	1	0	1	0%
ENV.DAMAGE/ LITTER/ NEEDLES	3	1	2	200%
MALICIOUS / NUISANCE COMMS	29	12	17	142%
NEIGHBOURS	12	10	2	20%
NOISE	9	4	5	125%
PROSTITUTION RELATED ACTIVITY	0	1	-1	-100%
ROWDY OR INCONSIDERATE BEHAV	135	113	22	19%
TRESPASS	6	1	5	500%
VEHICLE NUIS & INAPPROP VEH US	14	15	-1	-7%
Sum:	210	157	53	34%



Kettering Town Forum Report

William Knibb

NSIR Closing Cat. 1 Desc	No of Incidents (Jan13-Dec13)	No of Incidents (Jan12-Dec12)	+/- Incidents	% Change Incidents
ANIMAL RELATED INC ANTI-SOCIAL	2	3	-1	-33%
BEGGING / VAGRANCY	7	4	3	75%
ENV.DAMAGE/ LITTER/ NEEDLES	5	6	-1	-17%
HATE INC (NOT NOTIFIABLE CRIME	1	2	-1	-50%
MALICIOUS / NUISANCE COMMS	53	51	2	4%
NEIGHBOURS	54	40	14	35%
NOISE	28	36	-8	-22%
ROWDY OR INCONSIDERATE BEHAV	643	581	62	11%
TRESPASS	5	3	2	67%
VEHICLE NUIS & INAPPROP VEH US	17	14	3	21%
Sum:	815	740	75	10%

