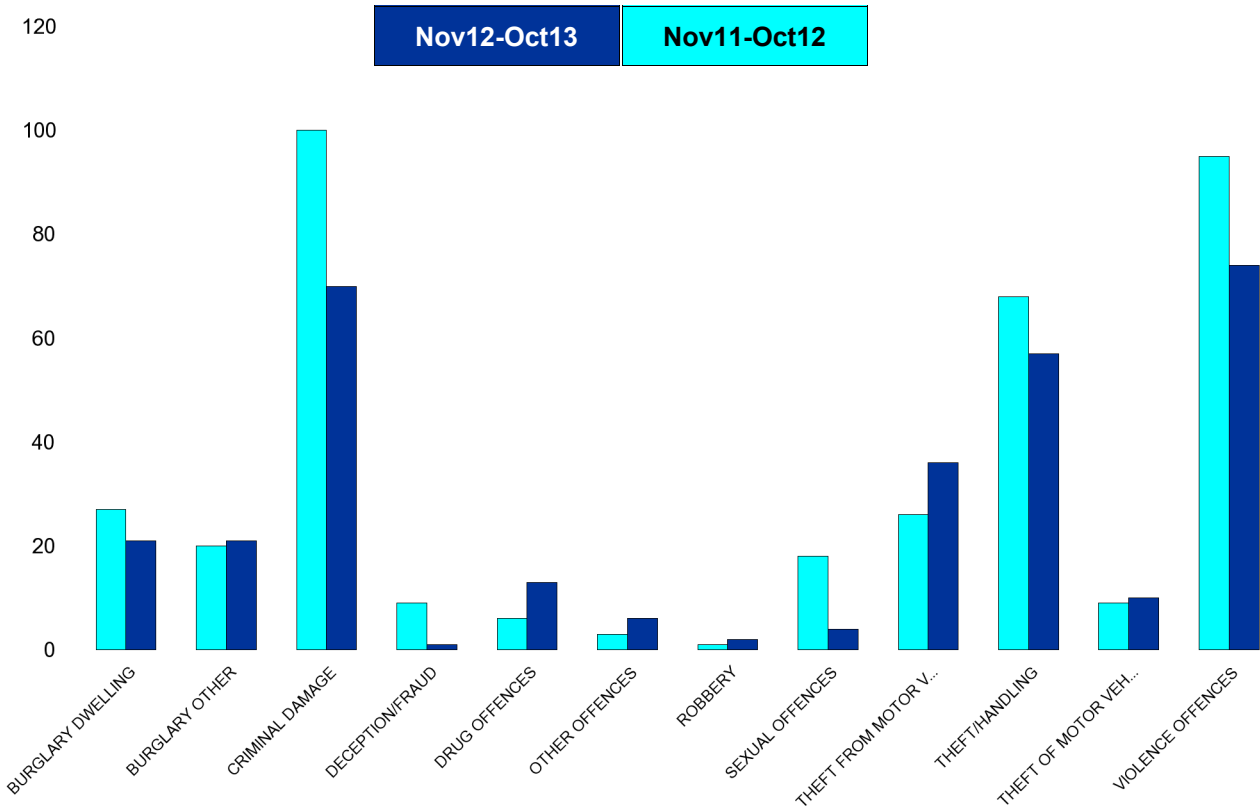


A6 Towns Forum Report

K006 & K007 Desborough - Crime

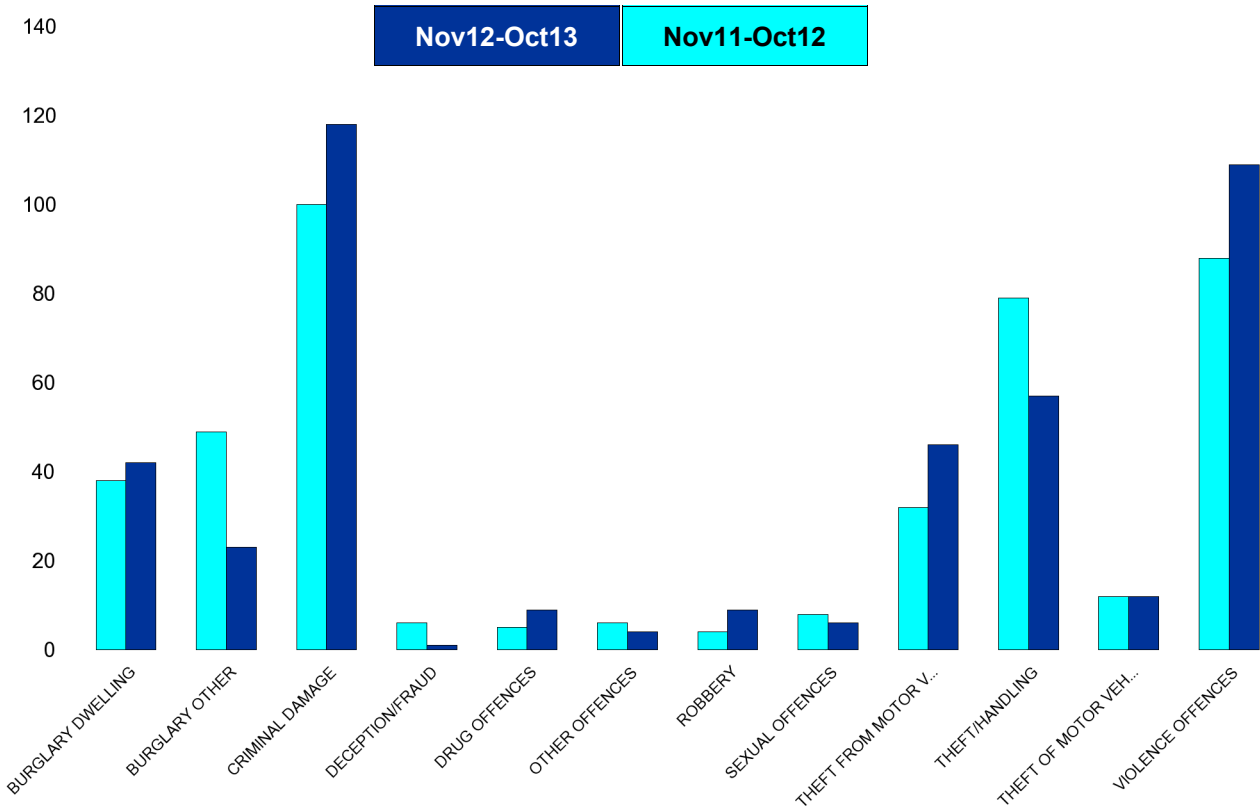
HO Group	No of Crimes (Nov12-Oct13)	No of Crimes (Nov11-Oct12)	+/- Crime	% Change	No of Cleared Up Crimes	Detection Rate (Past 12 Months)
BURGLARY DWELLING	21	27	-6	-22%	1	5%
BURGLARY OTHER	21	20	1	5%	0	0%
CRIMINAL DAMAGE	70	100	-30	-30%	6	9%
DECEPTION/FRAUD	1	9	-8	-89%	1	100%
DRUG OFFENCES	13	6	7	117%	13	100%
OTHER OFFENCES	6	3	3	100%	3	50%
ROBBERY	2	1	1	100%	1	50%
SEXUAL OFFENCES	4	18	-14	-78%	0	0%
THEFT FROM MOTOR VEHICLES	36	26	10	38%	0	0%
THEFT/HANDLING	57	68	-11	-16%	6	11%
THEFT OF MOTOR VEHICLES	10	9	1	11%	1	10%
VIOLENCE OFFENCES	74	95	-21	-22%	32	43%
Sum:	315	382	-67	-18%	64	20%



A6 Towns Forum Report

K012 Rothwell - Crime

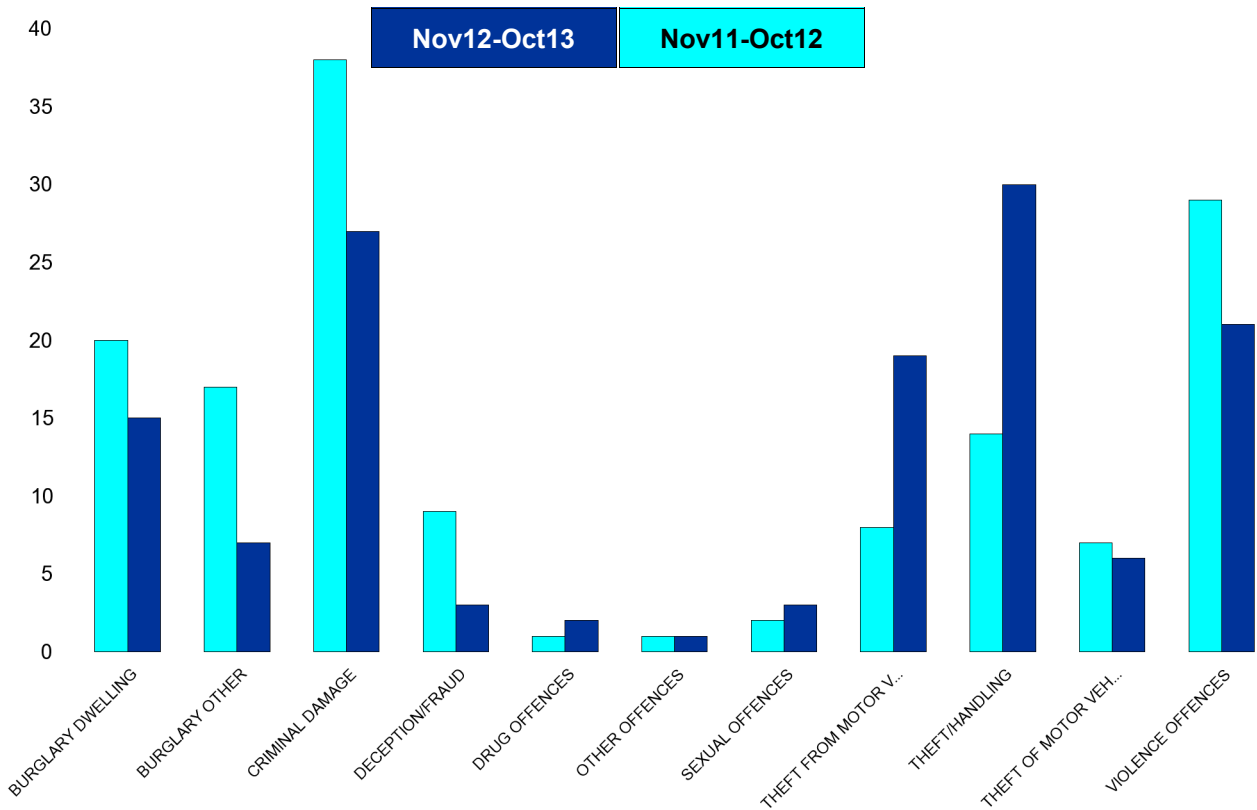
HO Group	No of Crimes (Nov12-Oct13)	No of Crimes (Nov11-Oct12)	+/- Crime	% Change	No of Cleared Up Crimes	Detection Rate (Past 12 Months)
BURGLARY DWELLING	42	38	4	11%	3	7%
BURGLARY OTHER	23	49	-26	-53%	0	0%
CRIMINAL DAMAGE	118	100	18	18%	16	14%
DECEPTION/FRAUD	1	6	-5	-83%	0	0%
DRUG OFFENCES	9	5	4	80%	9	100%
OTHER OFFENCES	4	6	-2	-33%	3	75%
ROBBERY	9	4	5	125%	5	56%
SEXUAL OFFENCES	6	8	-2	-25%	1	17%
THEFT FROM MOTOR VEHICLES	46	32	14	44%	3	7%
THEFT/HANDLING	57	79	-22	-28%	14	25%
THEFT OF MOTOR VEHICLES	12	12	0	0%	0	0%
VIOLENCE OFFENCES	109	88	21	24%	51	47%
Sum:	436	427	9	2%	105	24%



A6 Towns Forum Report

K003 Barton - Crime

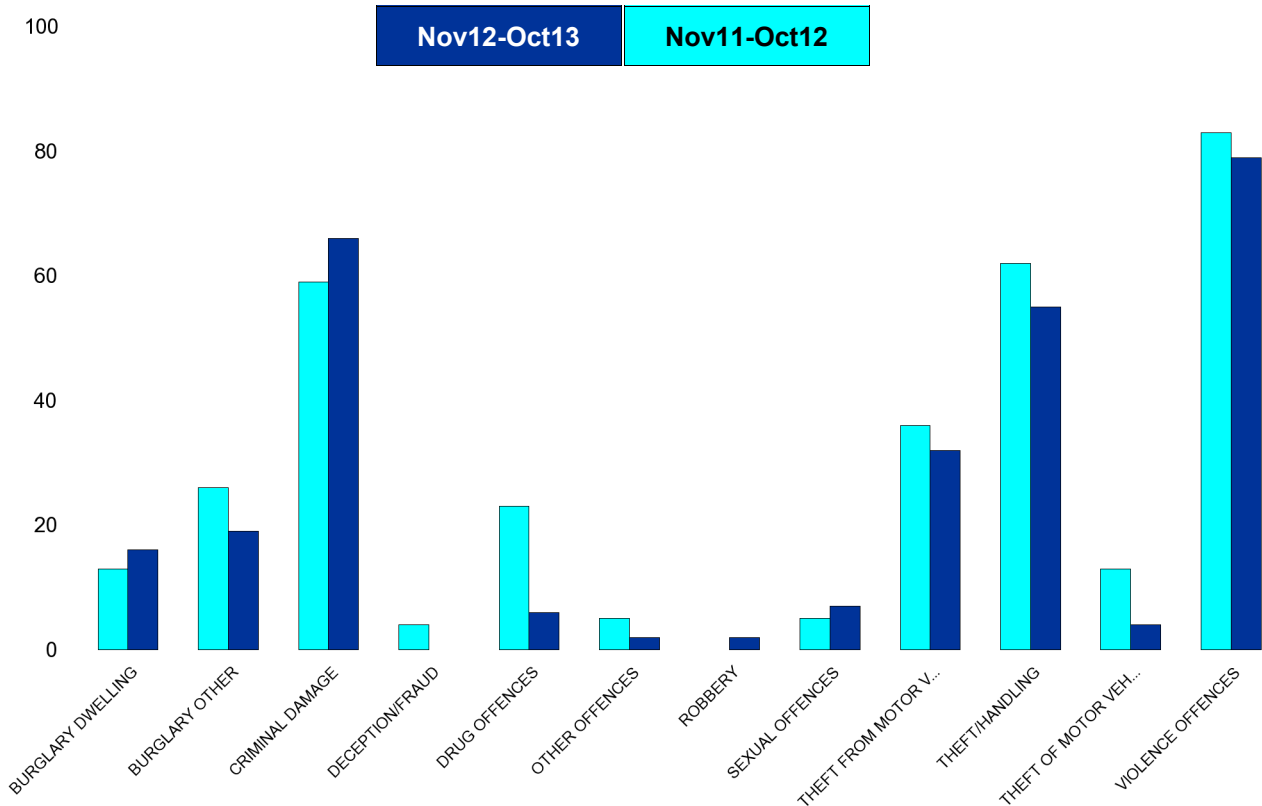
HO Group	No of Crimes (Nov12-Oct13)	No of Crimes (Nov11-Oct12)	+/- Crime	% Change	No of Cleared Up Crimes	Detection Rate (Past 12 Months)
BURGLARY DWELLING	15	20	-5	-25%	5	33%
BURGLARY OTHER	7	17	-10	-59%	0	0%
CRIMINAL DAMAGE	27	38	-11	-29%	1	4%
DECEPTION/FRAUD	3	9	-6	-67%	1	33%
DRUG OFFENCES	2	1	1	100%	1	50%
OTHER OFFENCES	1	1	0	0%	1	100%
SEXUAL OFFENCES	3	2	1	50%	2	67%
THEFT FROM MOTOR VEHICLES	19	8	11	138%	1	5%
THEFT/HANDLING	30	14	16	114%	6	20%
THEFT OF MOTOR VEHICLES	6	7	-1	-14%	1	17%
VIOLENCE OFFENCES	21	29	-8	-28%	11	52%
Sum:	134	146	-12	-8%	30	22%



A6 Towns Forum Report

K005 Burton Latimer - Crime

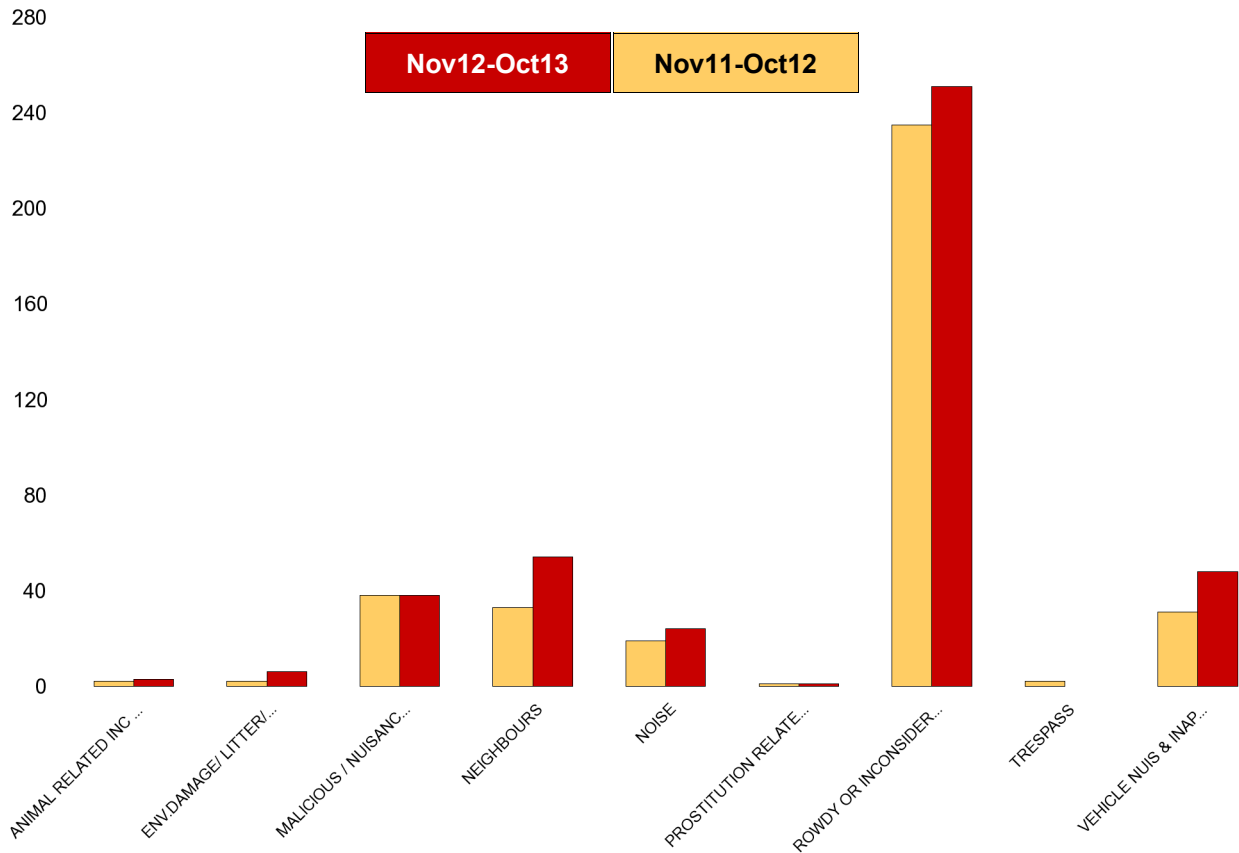
HO Group	No of Crimes (Nov12-Oct13)	No of Crimes (Nov11-Oct12)	+/- Crime	% Change	No of Cleared Up Crimes	Detection Rate (Past 12 Months)
BURGLARY DWELLING	16	13	3	23%	1	6%
BURGLARY OTHER	19	26	-7	-27%	0	0%
CRIMINAL DAMAGE	66	59	7	12%	13	20%
DECEPTION/FRAUD	0	4	-4	-100%	0	0%
DRUG OFFENCES	6	23	-17	-74%	7	117%
OTHER OFFENCES	2	5	-3	-60%	1	50%
ROBBERY	2	0	2	0%	0	0%
SEXUAL OFFENCES	7	5	2	40%	3	43%
THEFT FROM MOTOR VEHICLES	32	36	-4	-11%	0	0%
THEFT/HANDLING	55	62	-7	-11%	15	27%
THEFT OF MOTOR VEHICLES	4	13	-9	-69%	1	25%
VIOLENCE OFFENCES	79	83	-4	-5%	36	46%
Sum:	288	329	-41	-12%	77	27%



A6 Towns Forum Report

K006 & K007 Desborough ASB

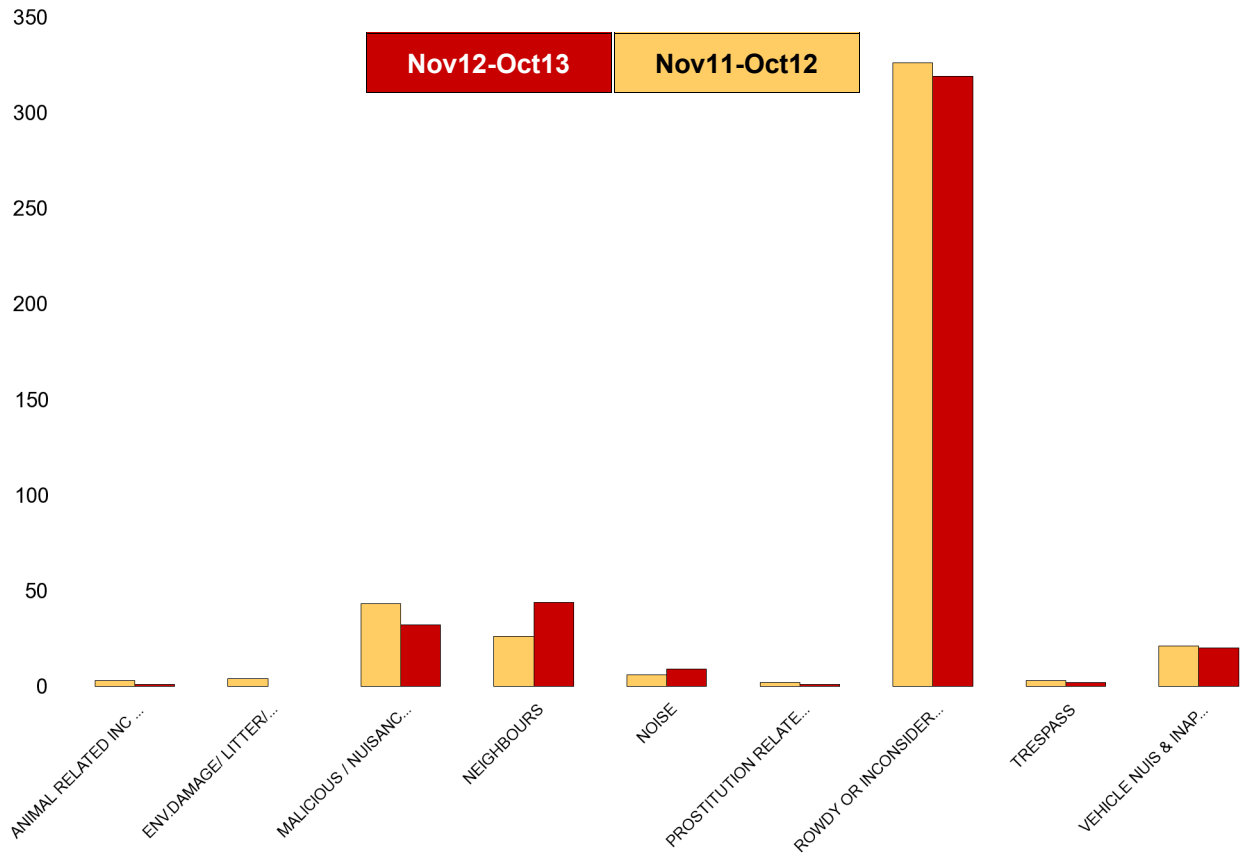
NSIR Closing Cat. 1 Desc	No of Incidents (Nov12-Oct13)	No of Incidents (Nov11-Oct12)	+/- Incidents	% Change Incidents
ANIMAL RELATED INC ANTI-SOCIAL	3	2	1	50%
ENV.DAMAGE/ LITTER/ NEEDLES	6	2	4	200%
MALICIOUS / NUISANCE COMMS	38	38	0	0%
NEIGHBOURS	54	33	21	64%
NOISE	24	19	5	26%
PROSTITUTION RELATED ACTIVITY	1	1	0	0%
ROWDY OR INCONSIDERATE BEHAV	251	235	16	7%
TRESPASS	0	2	-2	-100%
VEHICLE NUIS & INAPPROP VEH US	48	31	17	55%
Sum:	425	363	62	17%



A6 Towns Forum Report

K012 Rothwell ASB

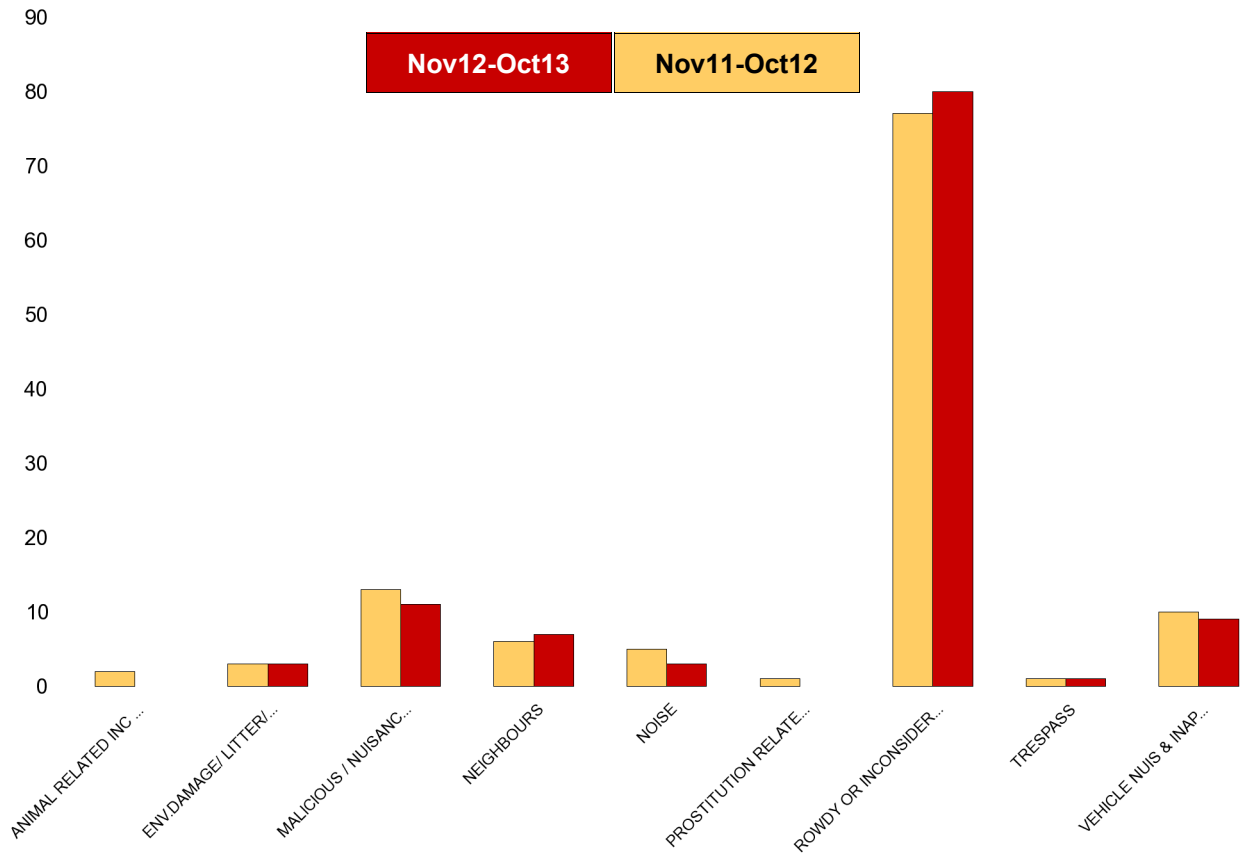
NSIR Closing Cat. 1 Desc	No of Incidents (Nov12-Oct13)	No of Incidents (Nov11-Oct12)	+/- Incidents	% Change Incidents
ANIMAL RELATED INC ANTI-SOCIAL	1	3	-2	-67%
ENV.DAMAGE/ LITTER/ NEEDLES	0	4	-4	-100%
MALICIOUS / NUISANCE COMMS	32	43	-11	-26%
NEIGHBOURS	44	26	18	69%
NOISE	9	6	3	50%
PROSTITUTION RELATED ACTIVITY	1	2	-1	-50%
ROWDY OR INCONSIDERATE BEHAV	319	326	-7	-2%
TRESPASS	2	3	-1	-33%
VEHICLE NUIS & INAPPROP VEH US	20	21	-1	-5%
Sum:	428	434	-6	-1%



A6 Towns Forum Report

K003 Barton ASB

NSIR Closing Cat. 1 Desc	No of Incidents (Nov12-Oct13)	No of Incidents (Nov11-Oct12)	+/- Incidents	% Change Incidents
ANIMAL RELATED INC ANTI-SOCIAL	0	2	-2	-100%
ENV.DAMAGE/ LITTER/ NEEDLES	3	3	0	0%
MALICIOUS / NUISANCE COMMS	11	13	-2	-15%
NEIGHBOURS	7	6	1	17%
NOISE	3	5	-2	-40%
PROSTITUTION RELATED ACTIVITY	0	1	-1	-100%
ROWDY OR INCONSIDERATE BEHAV	80	77	3	4%
TRESPASS	1	1	0	0%
VEHICLE NUIS & INAPPROP VEH US	9	10	-1	-10%
Sum:	114	118	-4	-3%



A6 Towns Forum Report

K005 Latimer ASB

NSIR Closing Cat. 1 Desc	No of Incidents (Nov12-Oct13)	No of Incidents (Nov11-Oct12)	+/- Incidents	% Change Incidents
ANIMAL RELATED INC ANTI-SOCIAL	8	2	6	300%
ENV.DAMAGE/ LITTER/ NEEDLES	5	3	2	67%
MALICIOUS / NUISANCE COMMS	28	42	-14	-33%
NEIGHBOURS	25	24	1	4%
NOISE	18	16	2	13%
ROWDY OR INCONSIDERATE BEHAV	160	151	9	6%
TRESPASS	2	2	0	0%
VEHICLE NUIS & INAPPROP VEH US	17	30	-13	-43%
Sum:	263	270	-7	-3%

