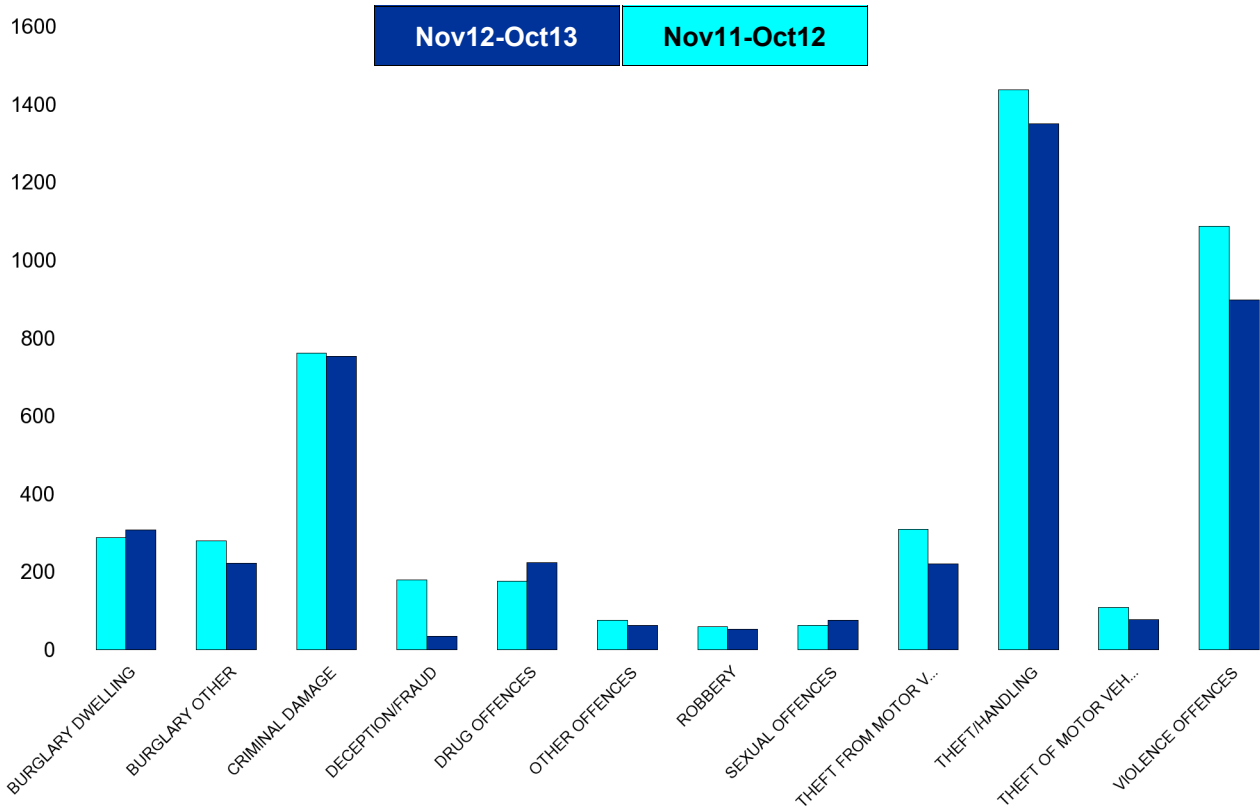


Kettering Town Forum Report

Kettering Town SCT - Crime

HO Group	No of Crimes (Nov12-Oct13)	No of Crimes (Nov11-Oct12)	+/- Crime	% Change	No of Cleared Up Crimes	Detection Rate (Past 12 Months)
BURGLARY DWELLING	307	288	19	7%	44	14%
BURGLARY OTHER	222	280	-58	-21%	61	27%
CRIMINAL DAMAGE	753	762	-9	-1%	133	18%
DECEPTION/FRAUD	35	179	-144	-80%	14	40%
DRUG OFFENCES	224	176	48	27%	204	91%
OTHER OFFENCES	63	76	-13	-17%	41	65%
ROBBERY	53	60	-7	-12%	13	25%
SEXUAL OFFENCES	76	63	13	21%	19	25%
THEFT FROM MOTOR VEHICLES	221	309	-88	-28%	18	8%
THEFT/HANDLING	1351	1438	-87	-6%	590	44%
THEFT OF MOTOR VEHICLES	77	108	-31	-29%	17	22%
VIOLENCE OFFENCES	898	1087	-189	-17%	398	44%
Sum:	4280	4826	-546	-11%	1552	36%



Kettering Town Forum Report

All Saints

HO Group	No of Crimes (Nov12-Oct13)	No of Crimes (Nov11-Oct12)	+/- Crime	% Change	No of Cleared Up Crimes	Detection Rate (Past 12 Months)
BURGLARY DWELLING	62	44	18	41%	7	11%
BURGLARY OTHER	56	49	7	14%	16	29%
CRIMINAL DAMAGE	149	158	-9	-6%	26	17%
DECEPTION/FRAUD	3	13	-10	-77%	2	67%
DRUG OFFENCES	49	35	14	40%	43	88%
OTHER OFFENCES	5	10	-5	-50%	3	60%
ROBBERY	17	19	-2	-11%	2	12%
SEXUAL OFFENCES	11	11	0	0%	4	36%
THEFT FROM MOTOR VEHICLES	42	67	-25	-37%	7	17%
THEFT/HANDLING	112	117	-5	-4%	35	31%
THEFT OF MOTOR VEHICLES	16	19	-3	-16%	2	13%
VIOLENCE OFFENCES	178	220	-42	-19%	83	47%
Sum:	700	762	-62	-8%	230	33%

240

200

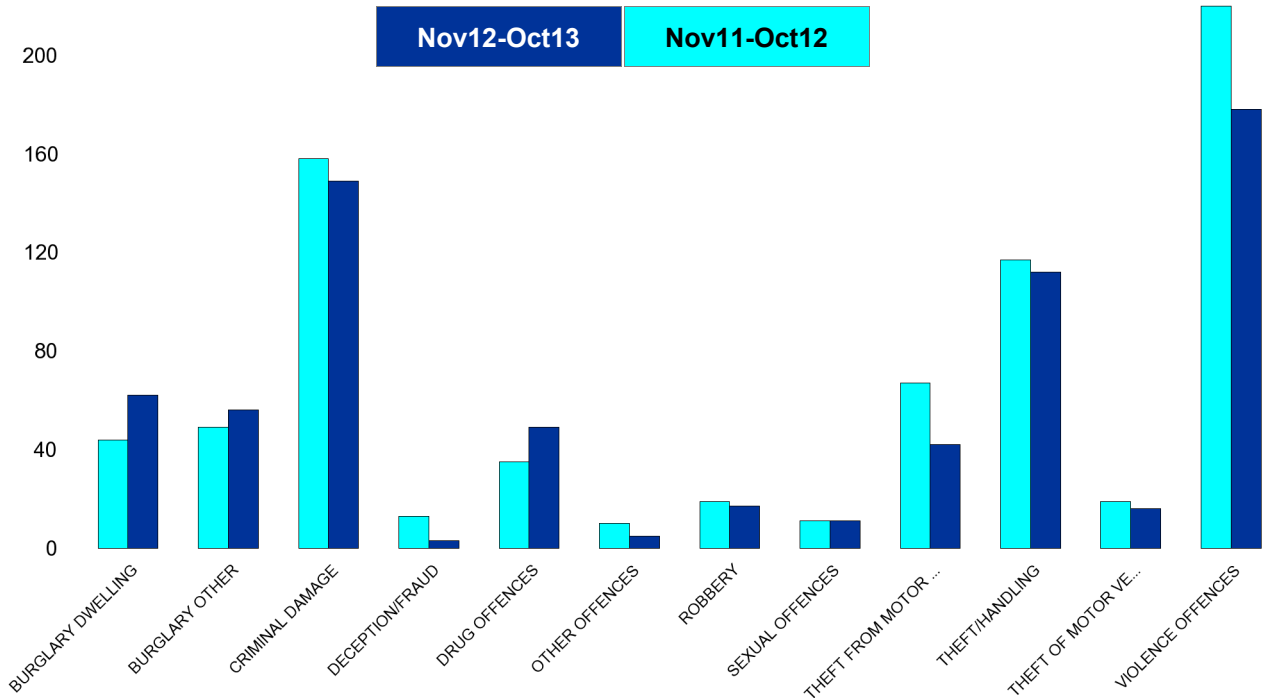
160

120

80

40

0

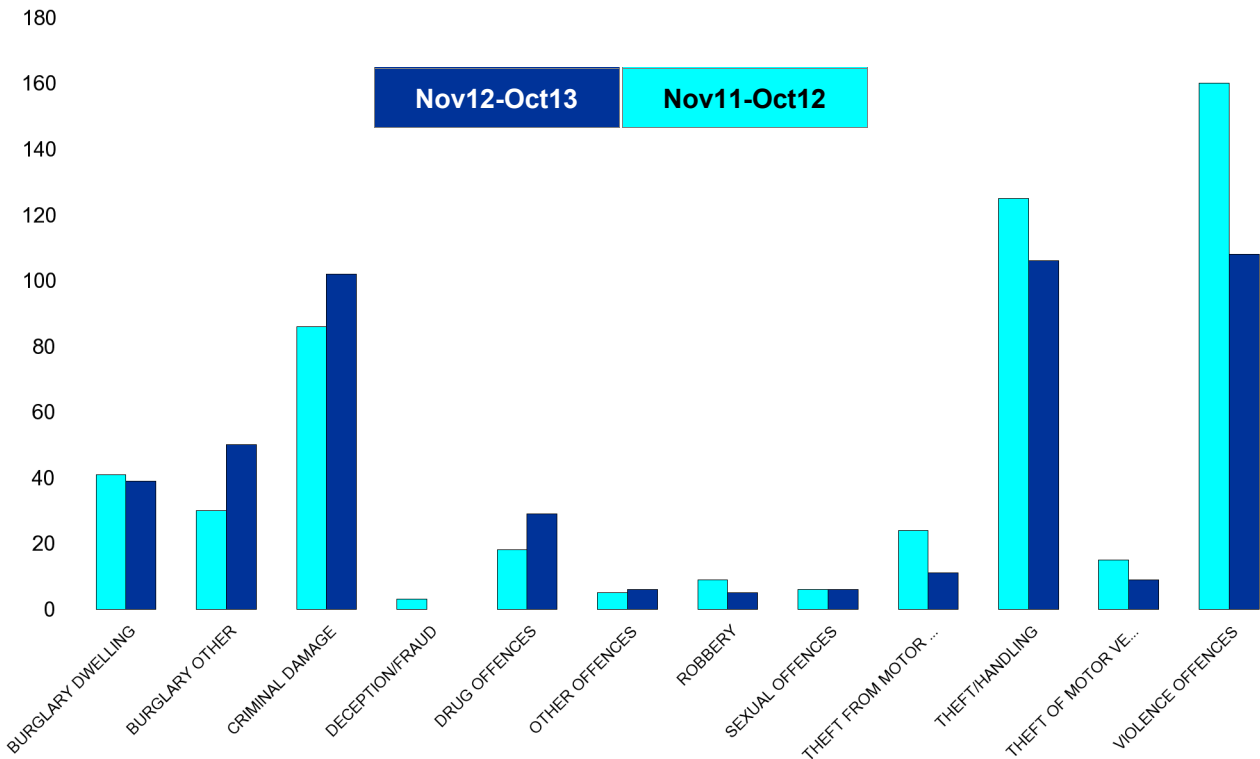


Kettering Town Forum Report

Avondale Grange

HO Group	No of Crimes (Nov12-Oct13)	No of Crimes (Nov11-Oct12)	+/- Crime	% Change
BURGLARY DWELLING	39	41	-2	-5%
BURGLARY OTHER	50	30	20	67%
CRIMINAL DAMAGE	102	86	16	19%
DECEPTION/FRAUD	0	3	-3	-100%
DRUG OFFENCES	29	18	11	61%
OTHER OFFENCES	6	5	1	20%
ROBBERY	5	9	-4	-44%
SEXUAL OFFENCES	6	6	0	0%
THEFT FROM MOTOR VEHICLES	11	24	-13	-54%
THEFT/HANDLING	106	125	-19	-15%
THEFT OF MOTOR VEHICLES	9	15	-6	-40%
VIOLENCE OFFENCES	108	160	-52	-33%
Sum:	471	522	-51	-10%

No of Cleared Up Crimes	Detection Rate (Past 12 Months)
1	3%
9	18%
10	10%
0	0%
24	83%
2	33%
0	0%
1	17%
1	9%
43	41%
2	22%
42	39%
135	29%

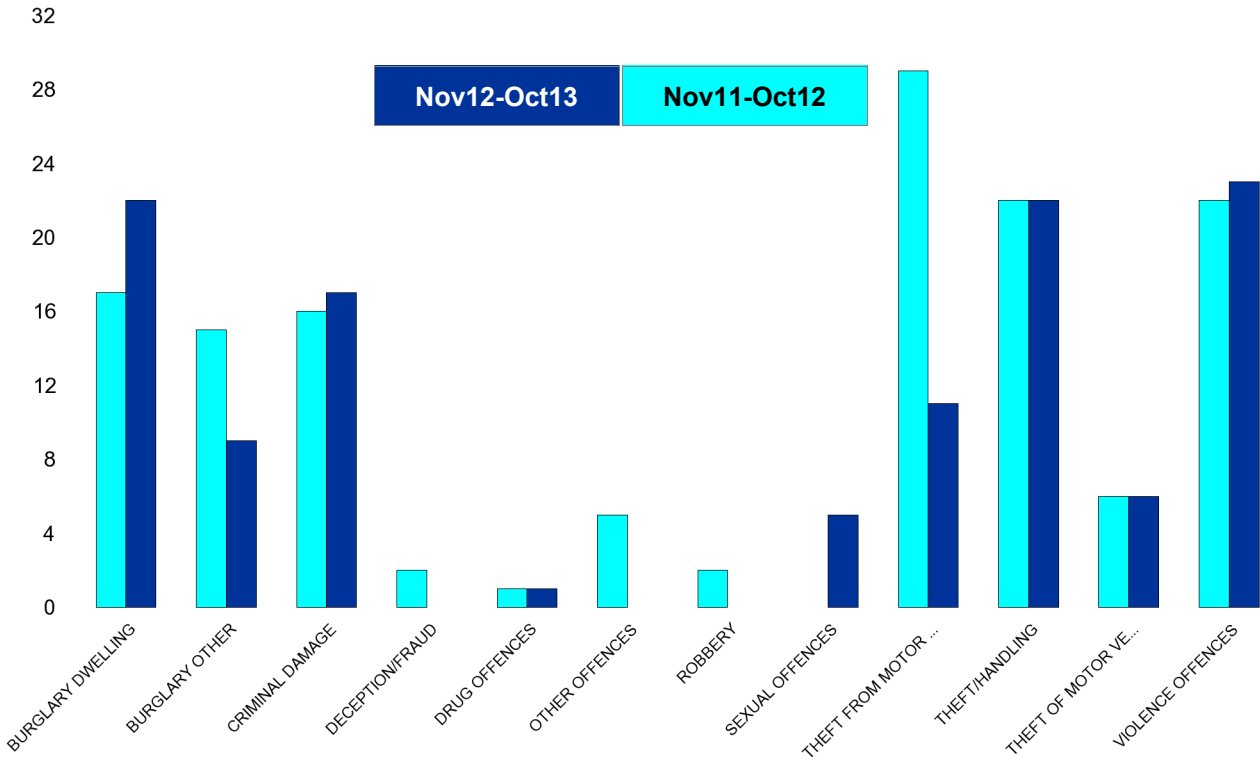


Kettering Town Forum Report

Brambleside

HO Group	No of Crimes (Nov12-Oct13)	No of Crimes (Nov11-Oct12)	+/- Crime	% Change
BURGLARY DWELLING	22	17	5	29%
BURGLARY OTHER	9	15	-6	-40%
CRIMINAL DAMAGE	17	16	1	6%
DECEPTION/FRAUD	0	2	-2	-100%
DRUG OFFENCES	1	1	0	0%
OTHER OFFENCES	0	5	-5	-100%
ROBBERY	0	2	-2	-100%
SEXUAL OFFENCES	5	0	5	0%
THEFT FROM MOTOR VEHICLES	11	29	-18	-62%
THEFT/HANDLING	22	22	0	0%
THEFT OF MOTOR VEHICLES	6	6	0	0%
VIOLENCE OFFENCES	23	22	1	5%
Sum:	116	137	-21	-15%

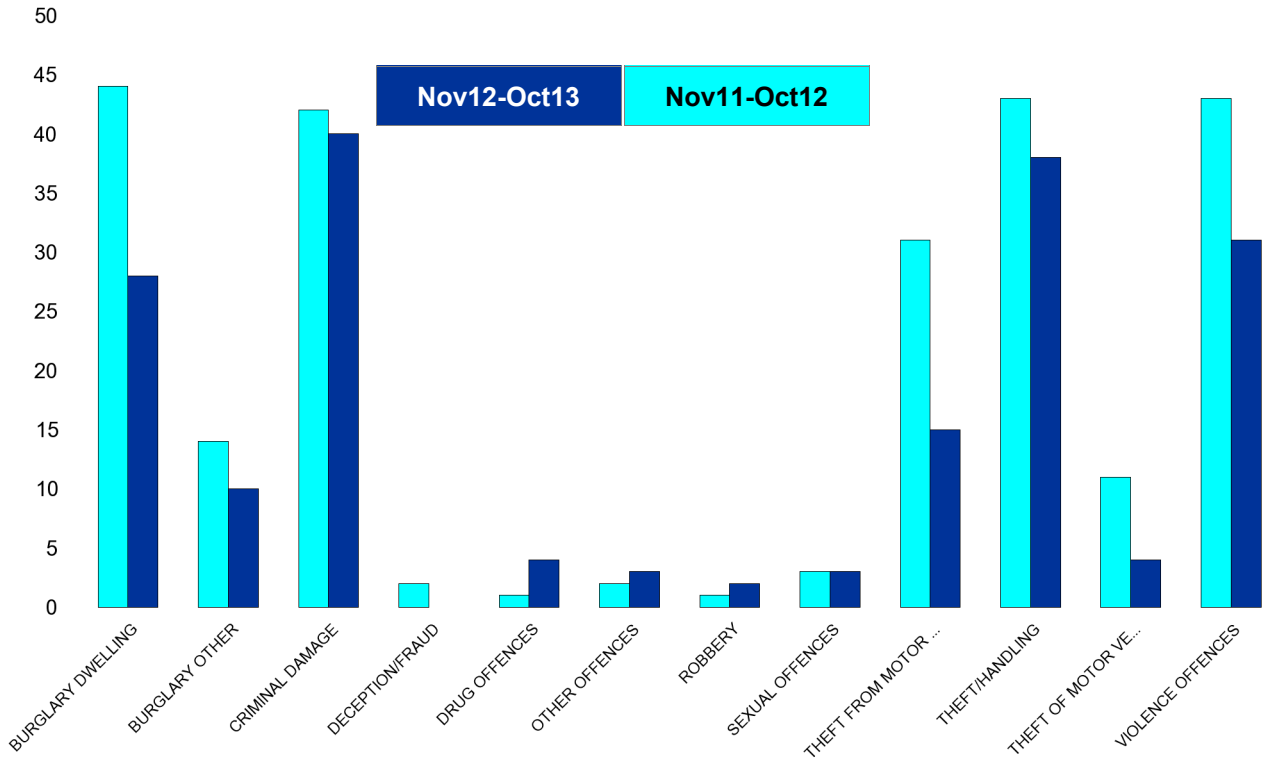
No of Cleared Up Crimes	Detection Rate (Past 12 Months)
7	32%
1	11%
1	6%
1	0%
1	100%
1	0%
0	0%
1	20%
0	0%
11	50%
2	33%
5	22%
31	27%



Kettering Town Forum Report

Ise Lodge

HO Group	No of Crimes (Nov12-Oct13)	No of Crimes (Nov11-Oct12)	+/- Crime	% Change	No of Cleared Up Crimes	Detection Rate (Past 12 Months)
BURGLARY DWELLING	28	44	-16	-36%	7	25%
BURGLARY OTHER	10	14	-4	-29%	0	0%
CRIMINAL DAMAGE	40	42	-2	-5%	3	8%
DECEPTION/FRAUD	0	2	-2	-100%	0	0%
DRUG OFFENCES	4	1	3	300%	3	75%
OTHER OFFENCES	3	2	1	50%	1	33%
ROBBERY	2	1	1	100%	0	0%
SEXUAL OFFENCES	3	3	0	0%	0	0%
THEFT FROM MOTOR VEHICLES	15	31	-16	-52%	3	20%
THEFT/HANDLING	38	43	-5	-12%	16	42%
THEFT OF MOTOR VEHICLES	4	11	-7	-64%	0	0%
VIOLENCE OFFENCES	31	43	-12	-28%	9	29%
Sum:	178	237	-59	-25%	42	24%

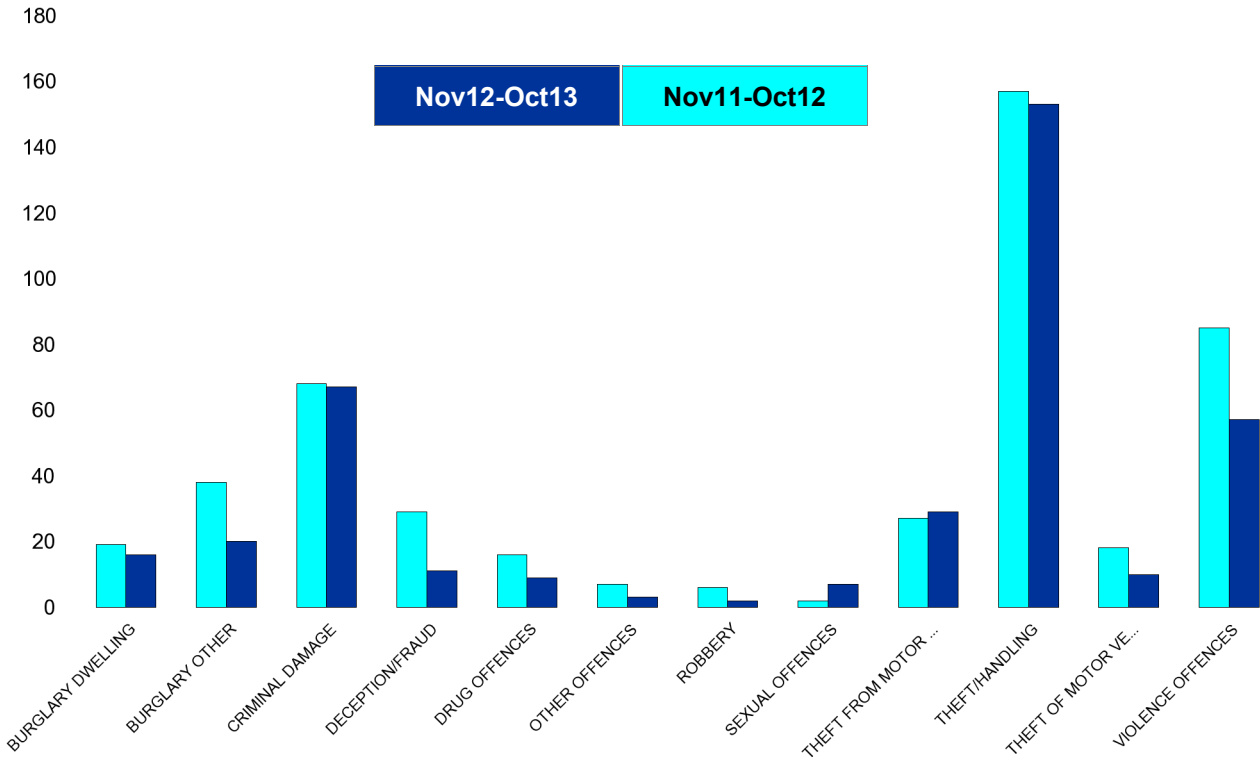


Kettering Town Forum Report

Northfield

HO Group	No of Crimes (Nov12-Oct13)	No of Crimes (Nov11-Oct12)	+/- Crime	% Change
BURGLARY DWELLING	16	19	-3	-16%
BURGLARY OTHER	20	38	-18	-47%
CRIMINAL DAMAGE	67	68	-1	-1%
DECEPTION/FRAUD	11	29	-18	-62%
DRUG OFFENCES	9	16	-7	-44%
OTHER OFFENCES	3	7	-4	-57%
ROBBERY	2	6	-4	-67%
SEXUAL OFFENCES	7	2	5	250%
THEFT FROM MOTOR VEHICLES	29	27	2	7%
THEFT/HANDLING	153	157	-4	-3%
THEFT OF MOTOR VEHICLES	10	18	-8	-44%
VIOLENCE OFFENCES	57	85	-28	-33%
Sum:	384	472	-88	-19%

No of Cleared Up Crimes	Detection Rate (Past 12 Months)
5	31%
7	35%
16	24%
1	9%
9	100%
2	67%
2	100%
0	0%
1	3%
69	45%
3	30%
29	51%
144	38%

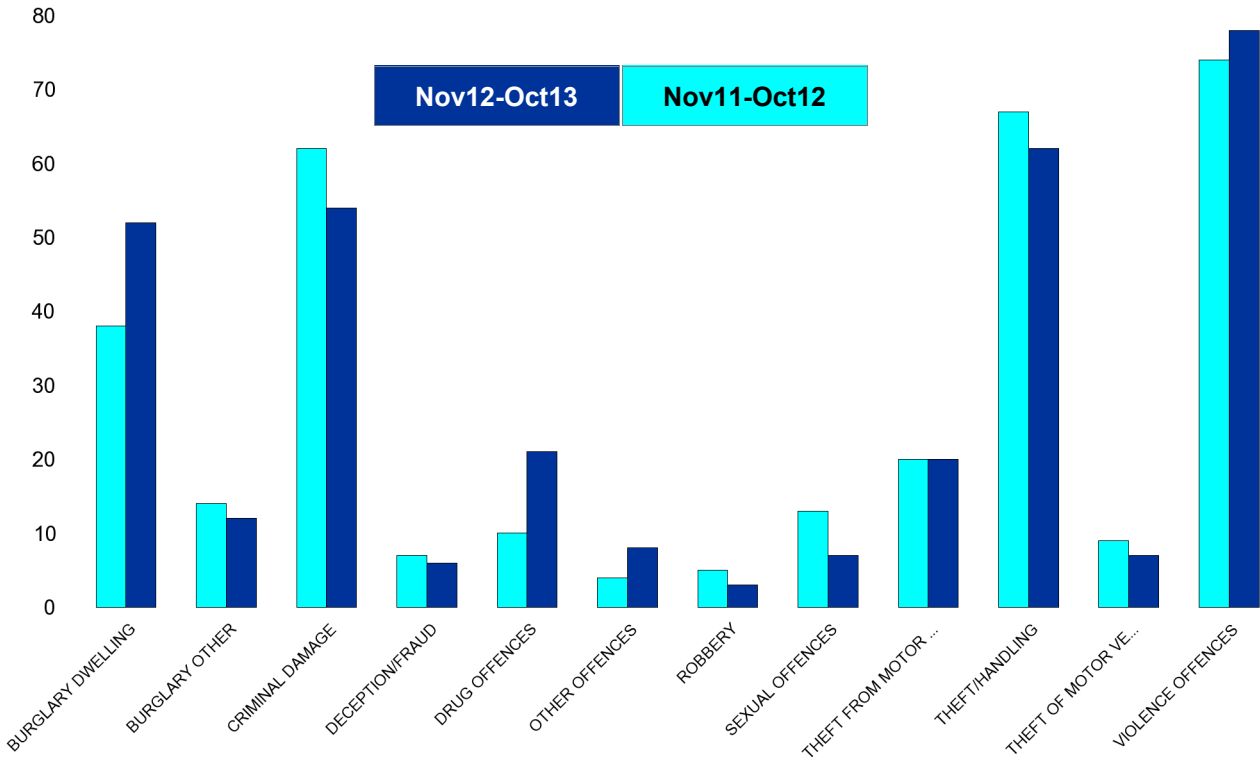


Kettering Town Forum Report

Pipers Hill

HO Group	No of Crimes (Nov12-Oct13)	No of Crimes (Nov11-Oct12)	+/- Crime	% Change
BURGLARY DWELLING	52	38	14	37%
BURGLARY OTHER	12	14	-2	-14%
CRIMINAL DAMAGE	54	62	-8	-13%
DECEPTION/FRAUD	6	7	-1	-14%
DRUG OFFENCES	21	10	11	110%
OTHER OFFENCES	8	4	4	100%
ROBBERY	3	5	-2	-40%
SEXUAL OFFENCES	7	13	-6	-46%
THEFT FROM MOTOR VEHICLES	20	20	0	0%
THEFT/HANDLING	62	67	-5	-7%
THEFT OF MOTOR VEHICLES	7	9	-2	-22%
VIOLENCE OFFENCES	78	74	4	5%
Sum:	330	323	7	2%

No of Cleared Up Crimes	Detection Rate (Past 12 Months)
6	12%
1	8%
8	15%
2	33%
18	86%
4	50%
1	33%
4	57%
2	10%
18	29%
2	29%
25	32%
91	28%

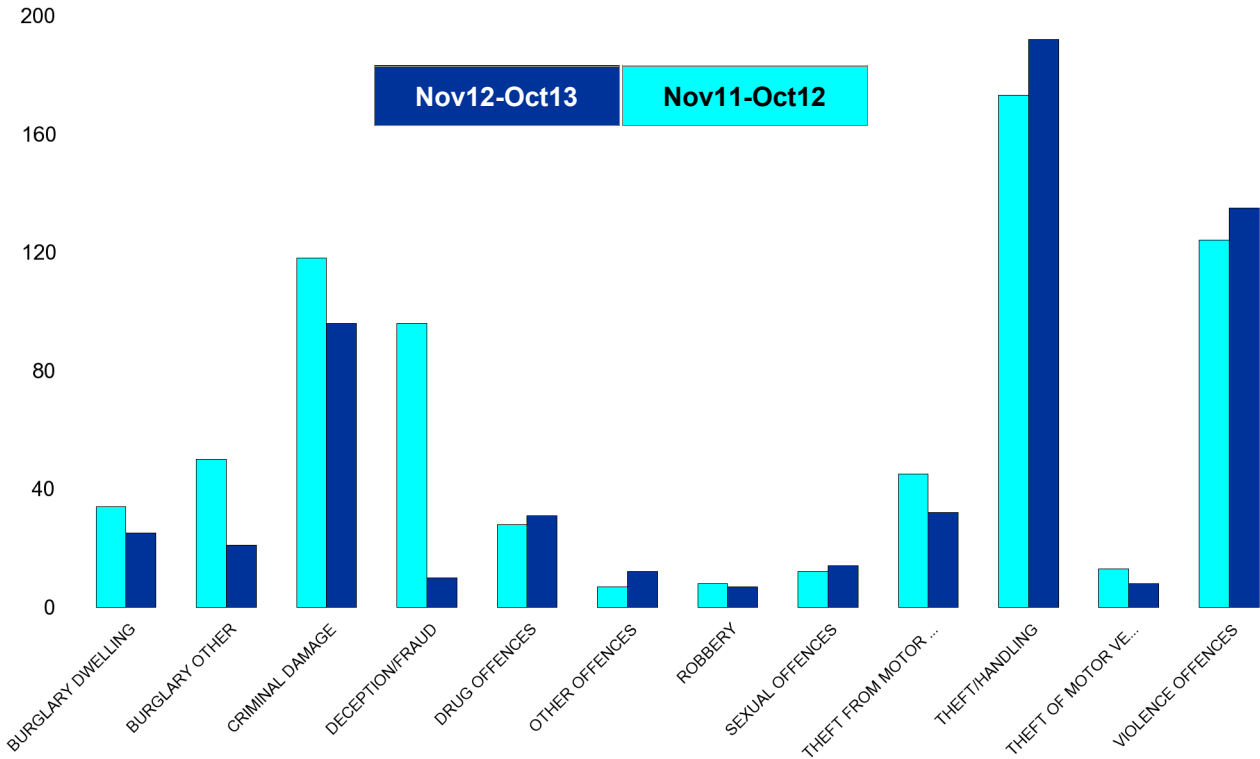


Kettering Town Forum Report

St Michaels and Wicksteed

HO Group	No of Crimes (Nov12-Oct13)	No of Crimes (Nov11-Oct12)	+/- Crime	% Change
BURGLARY DWELLING	25	34	-9	-26%
BURGLARY OTHER	21	50	-29	-58%
CRIMINAL DAMAGE	96	118	-22	-19%
DECEPTION/FRAUD	10	96	-86	-90%
DRUG OFFENCES	31	28	3	11%
OTHER OFFENCES	12	7	5	71%
ROBBERY	7	8	-1	-13%
SEXUAL OFFENCES	14	12	2	17%
THEFT FROM MOTOR VEHICLES	32	45	-13	-29%
THEFT/HANDLING	192	173	19	11%
THEFT OF MOTOR VEHICLES	8	13	-5	-38%
VIOLENCE OFFENCES	135	124	11	9%
Sum:	583	708	-125	-18%

No of Cleared Up Crimes	Detection Rate (Past 12 Months)
3	12%
9	43%
25	26%
5	50%
29	94%
9	75%
1	14%
8	57%
0	0%
60	31%
1	13%
59	44%
209	36%

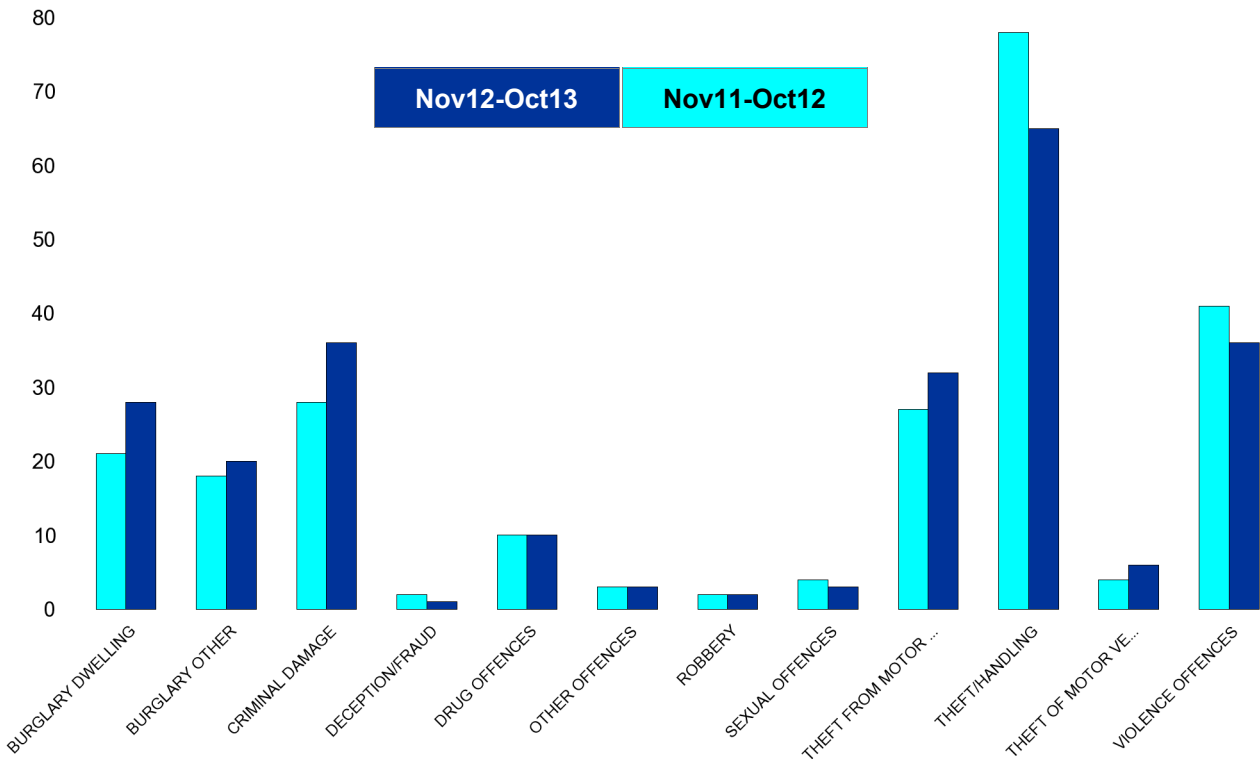


Kettering Town Forum Report

St Peters

HO Group	No of Crimes (Nov12-Oct13)	No of Crimes (Nov11-Oct12)	+/- Crime	% Change
BURGLARY DWELLING	28	21	7	33%
BURGLARY OTHER	20	18	2	11%
CRIMINAL DAMAGE	36	28	8	29%
DECEPTION/FRAUD	1	2	-1	-50%
DRUG OFFENCES	10	10	0	0%
OTHER OFFENCES	3	3	0	0%
ROBBERY	2	2	0	0%
SEXUAL OFFENCES	3	4	-1	-25%
THEFT FROM MOTOR VEHICLES	32	27	5	19%
THEFT/HANDLING	65	78	-13	-17%
THEFT OF MOTOR VEHICLES	6	4	2	50%
VIOLENCE OFFENCES	36	41	-5	-12%
Sum:	242	238	4	2%

No of Cleared Up Crimes	Detection Rate (Past 12 Months)
1	4%
0	0%
4	11%
0	0%
12	120%
2	67%
1	50%
0	0%
1	3%
14	22%
4	67%
21	58%
60	25%

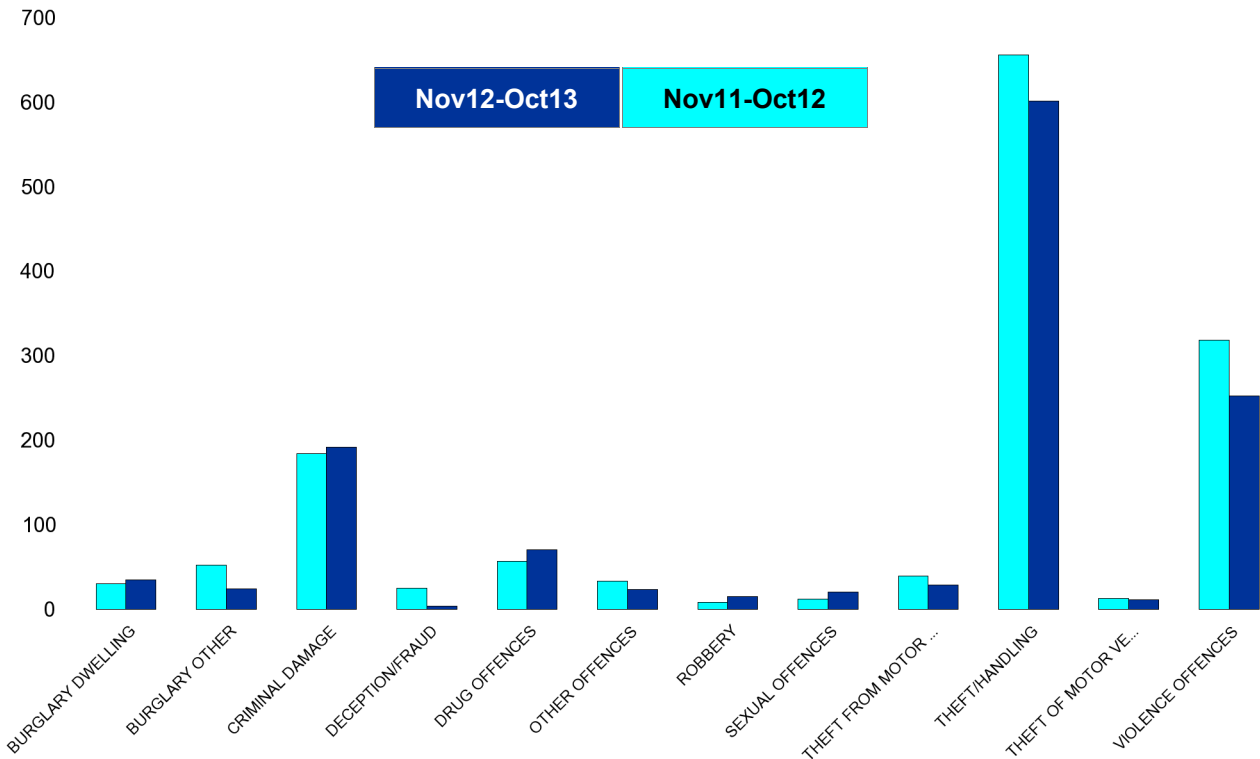


Kettering Town Forum Report

William Knibb

HO Group	No of Crimes (Nov12-Oct13)	No of Crimes (Nov11-Oct12)	+/- Crime	% Change
BURGLARY DWELLING	35	30	5	17%
BURGLARY OTHER	24	52	-28	-54%
CRIMINAL DAMAGE	192	184	8	4%
DECEPTION/FRAUD	4	25	-21	-84%
DRUG OFFENCES	70	57	13	23%
OTHER OFFENCES	23	33	-10	-30%
ROBBERY	15	8	7	88%
SEXUAL OFFENCES	20	12	8	67%
THEFT FROM MOTOR VEHICLES	29	39	-10	-26%
THEFT/HANDLING	601	656	-55	-8%
THEFT OF MOTOR VEHICLES	11	13	-2	-15%
VIOLENCE OFFENCES	252	318	-66	-21%
Sum:	1276	1427	-151	-11%

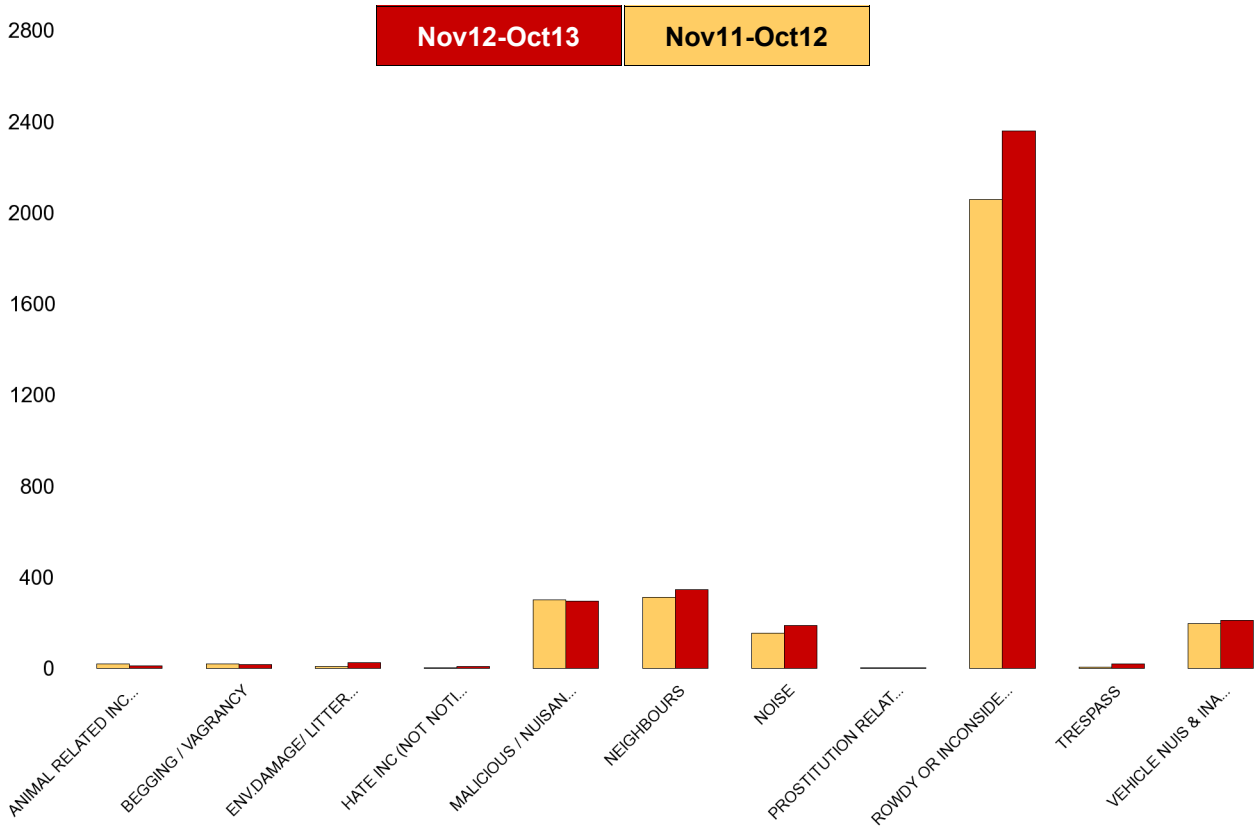
No of Cleared Up Crimes	Detection Rate (Past 12 Months)
7	20%
18	75%
40	21%
3	75%
65	93%
17	74%
6	40%
1	5%
3	10%
324	54%
1	9%
125	50%
610	48%



Kettering Town Forum Report

Kettering Town SCT - ASB

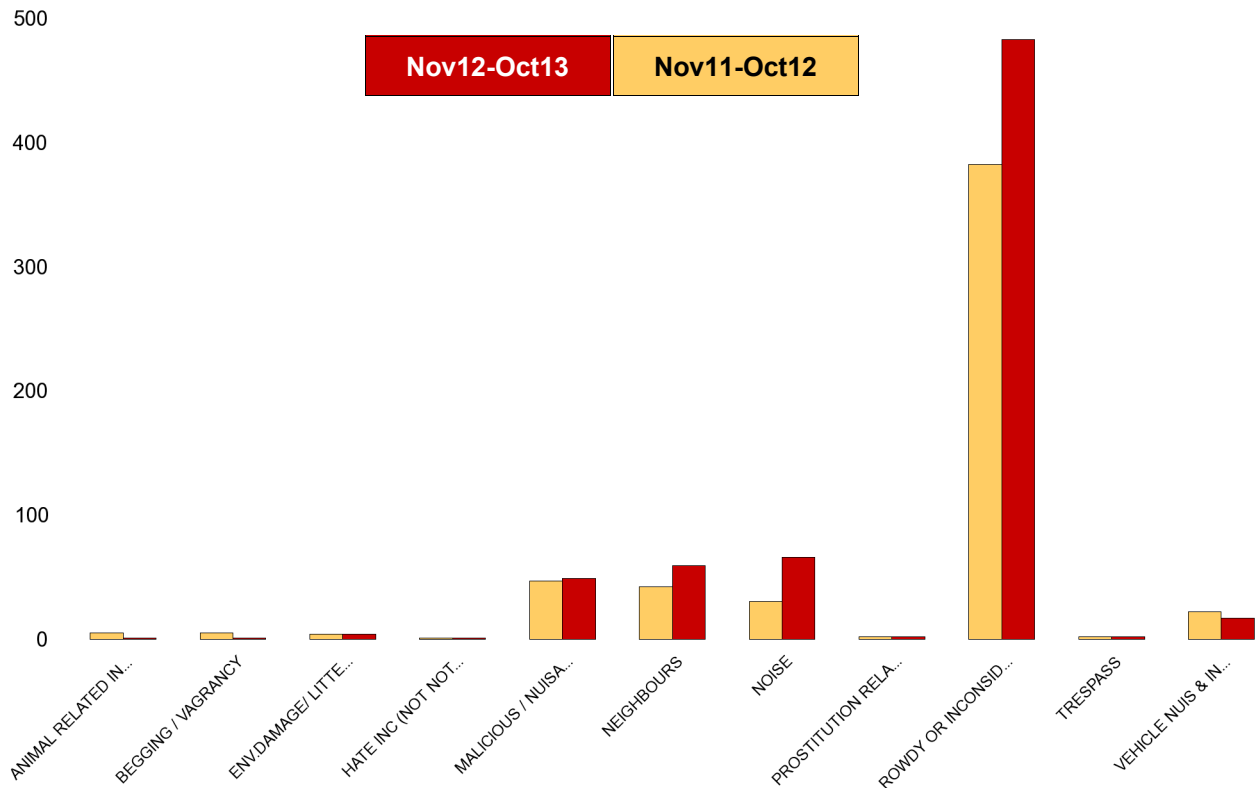
NSIR Closing Cat. 1 Desc	No of Incidents (Nov12-Oct13)	No of Incidents (Nov11-Oct12)	+/- Incidents	% Change Incidents
ANIMAL RELATED INC ANTI-SOCIAL	14	21	-7	-33%
BEGGING / VAGRANCY	19	21	-2	-10%
ENV.DAMAGE/ LITTER/ NEEDLES	26	11	15	136%
HATE INC (NOT NOTIFIABLE CRIME	9	4	5	125%
MALICIOUS / NUISANCE COMMS	297	301	-4	-1%
NEIGHBOURS	347	314	33	11%
NOISE	190	156	34	22%
PROSTITUTION RELATED ACTIVITY	4	3	1	33%
ROWDY OR INCONSIDERATE BEHAV	2361	2061	300	15%
TRESPASS	20	8	12	150%
VEHICLE NUIS & INAPPROP VEH US	212	197	15	8%
Sum:	3499	3097	402	13%



Kettering Town Forum Report

All Saints

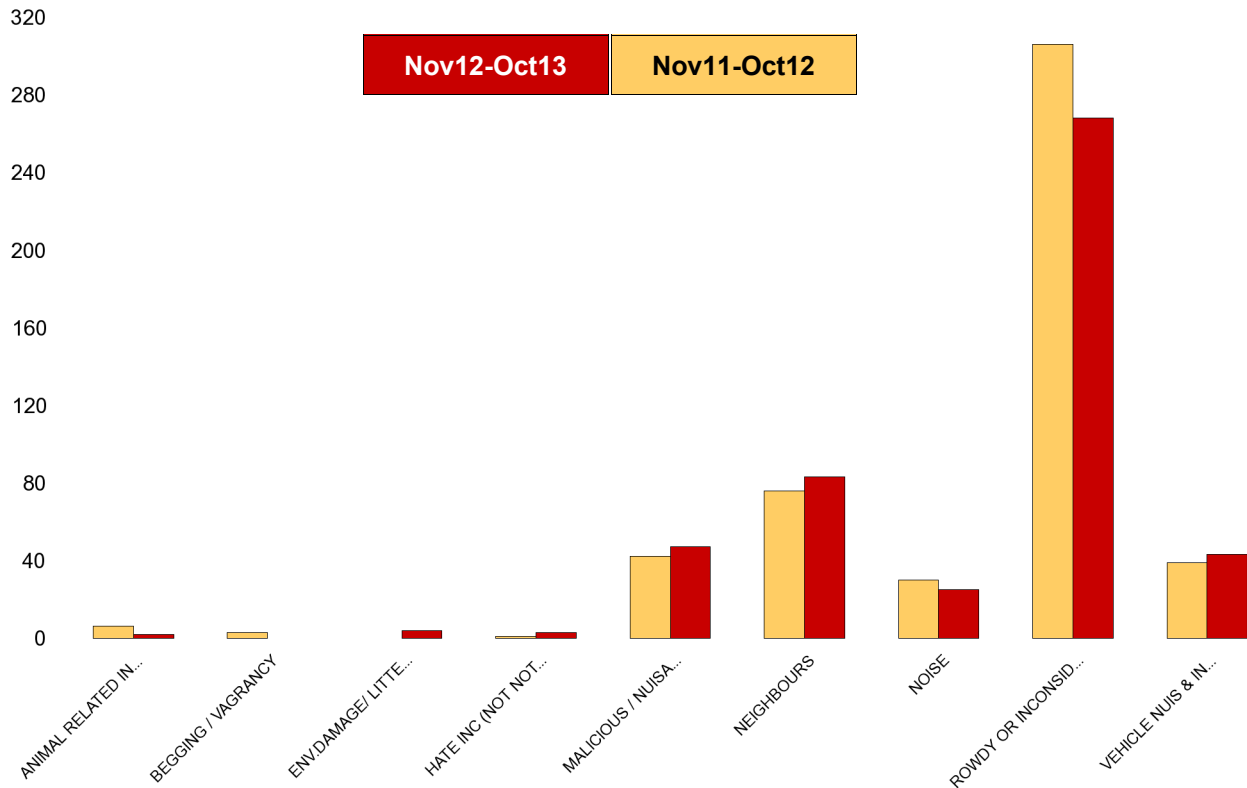
NSIR Closing Cat. 1 Desc	No of Incidents (Nov12-Oct13)	No of Incidents (Nov11-Oct12)	+/- Incidents	% Change Incidents
ANIMAL RELATED INC ANTI-SOCIAL	1	5	-4	-80%
BEGGING / VAGRANCY	1	5	-4	-80%
ENV.DAMAGE/ LITTER/ NEEDLES	4	4	0	0%
HATE INC (NOT NOTIFIABLE CRIME	1	1	0	0%
MALICIOUS / NUISANCE COMMS	49	47	2	4%
NEIGHBOURS	59	42	17	40%
NOISE	66	30	36	120%
PROSTITUTION RELATED ACTIVITY	2	2	0	0%
ROWDY OR INCONSIDERATE BEHAV	483	382	101	26%
TRESPASS	2	2	0	0%
VEHICLE NUIS & INAPPROP VEH US	17	22	-5	-23%
Sum:	685	542	143	26%



Kettering Town Forum Report

Avondale Grange

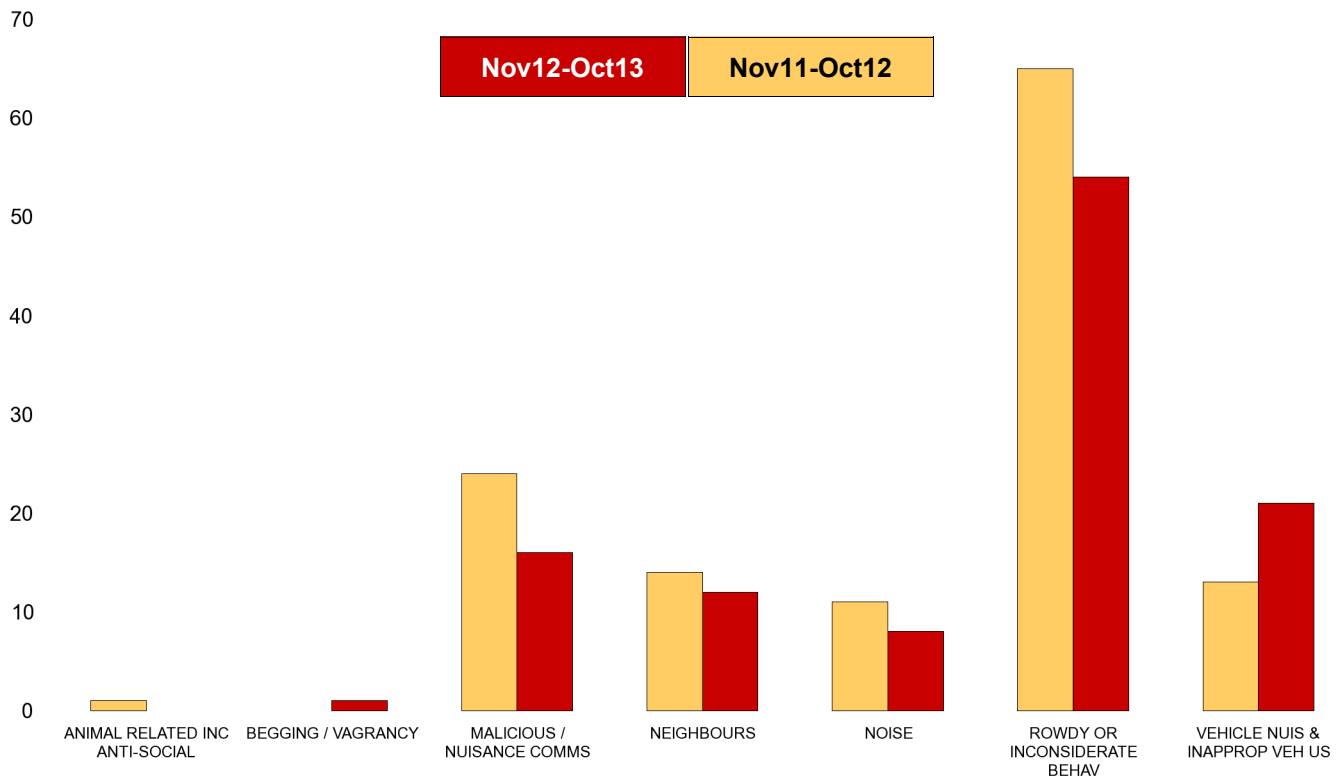
NSIR Closing Cat. 1 Desc	No of Incidents (Nov12-Oct13)	No of Incidents (Nov11-Oct12)	+/- Incidents	% Change Incidents
ANIMAL RELATED INC ANTI-SOCIAL	2	6	-4	-67%
BEGGING / VAGRANCY	0	3	-3	-100%
ENV.DAMAGE/ LITTER/ NEEDLES	4	0	4	0%
HATE INC (NOT NOTIFIABLE CRIME	3	1	2	200%
MALICIOUS / NUISANCE COMMS	47	42	5	12%
NEIGHBOURS	83	76	7	9%
NOISE	25	30	-5	-17%
ROWDY OR INCONSIDERATE BEHAV	268	306	-38	-12%
VEHICLE NUIS & INAPPROP VEH US	43	39	4	10%
Sum:	475	503	-28	-6%



Kettering Town Forum Report

Brambleside

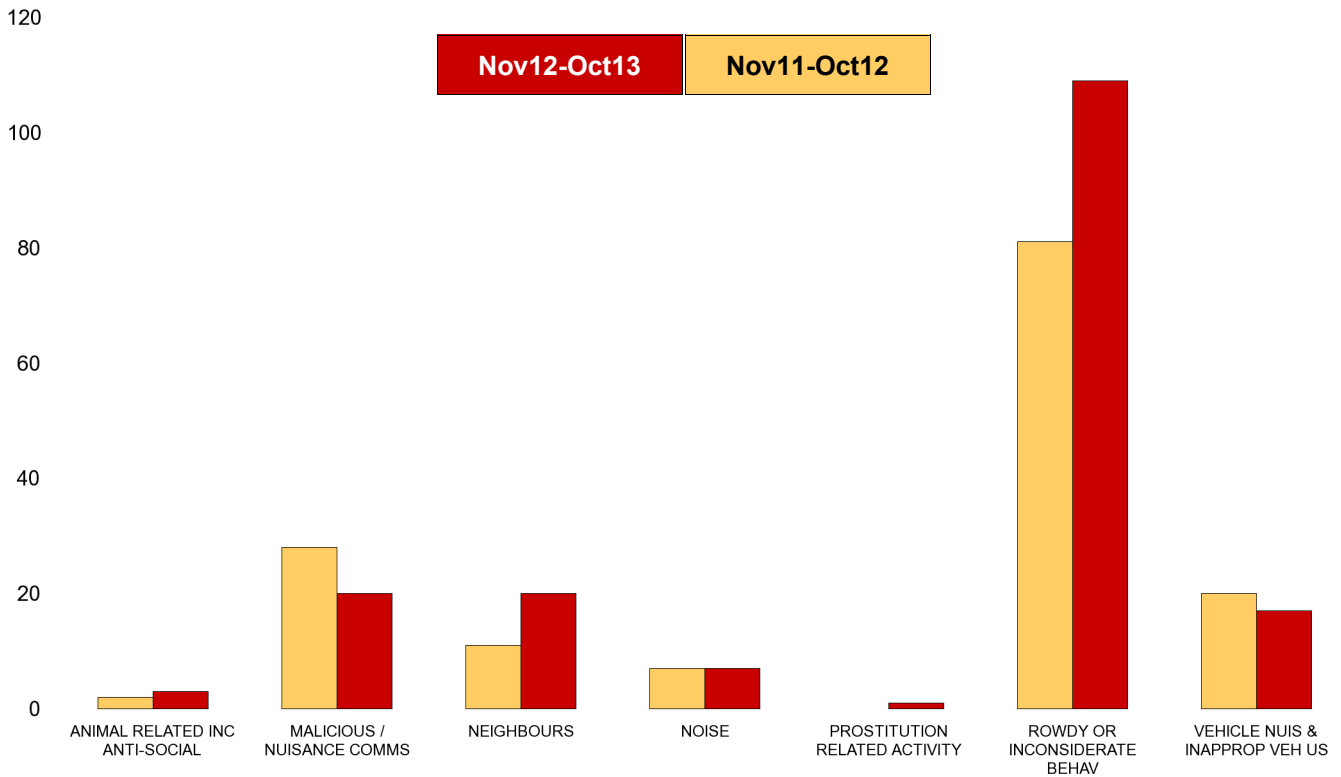
NSIR Closing Cat. 1 Desc	No of Incidents (Nov12-Oct13)	No of Incidents (Nov11-Oct12)	+/- Incidents	% Change Incidents
ANIMAL RELATED INC ANTI-SOCIAL	0	1	-1	-100%
BEGGING / VAGRANCY	1	0	1	0%
MALICIOUS / NUISANCE COMMS	16	24	-8	-33%
NEIGHBOURS	12	14	-2	-14%
NOISE	8	11	-3	-27%
ROWDY OR INCONSIDERATE BEHAV	54	65	-11	-17%
VEHICLE NUIS & INAPPROP VEH US	21	13	8	62%
Sum:	112	128	-16	-13%



Kettering Town Forum Report

Ise Lodge

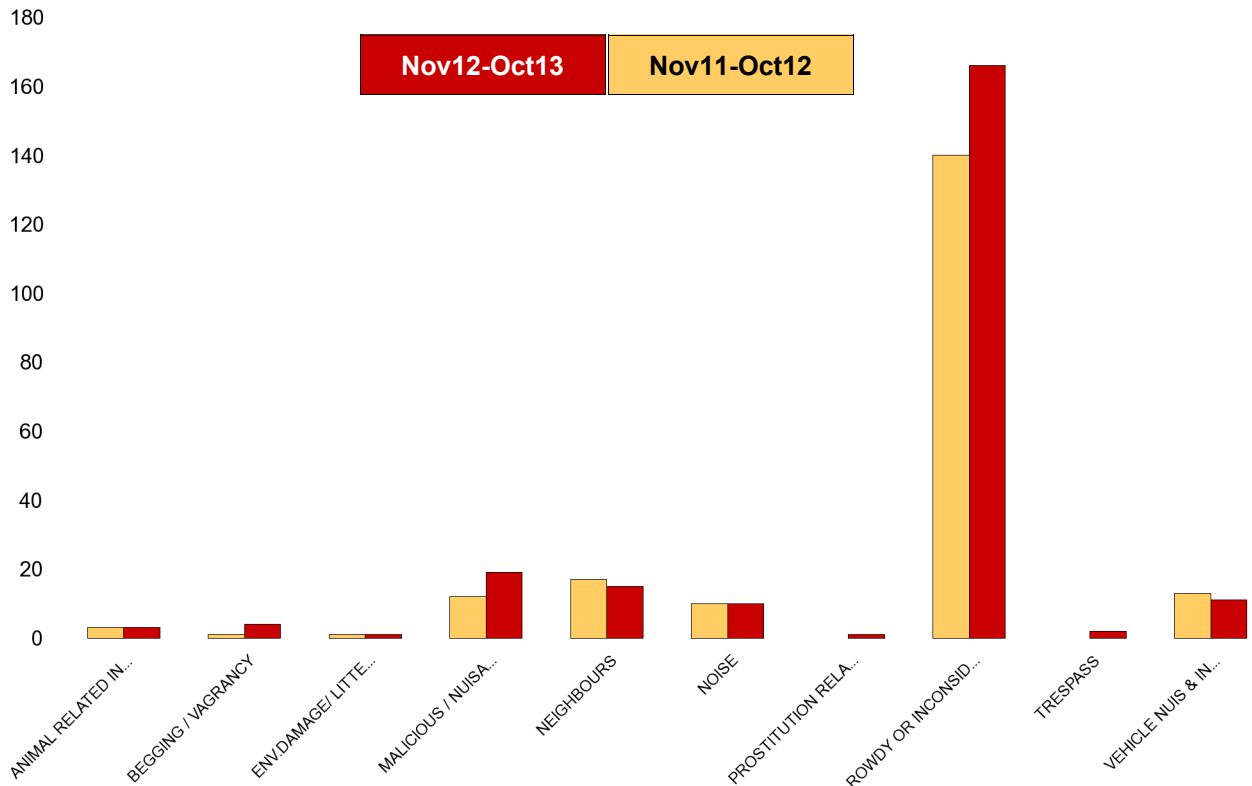
NSIR Closing Cat. 1 Desc	No of Incidents (Nov12-Oct13)	No of Incidents (Nov11-Oct12)	+/- Incidents	% Change Incidents
ANIMAL RELATED INC ANTI-SOCIAL	3	2	1	50%
MALICIOUS / NUISANCE COMMS	20	28	-8	-29%
NEIGHBOURS	20	11	9	82%
NOISE	7	7	0	0%
PROSTITUTION RELATED ACTIVITY	1	0	1	0%
ROWDY OR INCONSIDERATE BEHAV	109	81	28	35%
VEHICLE NUIS & INAPPROP VEH US	17	20	-3	-15%
Sum:	177	149	28	19%



Kettering Town Forum Report

Northfield

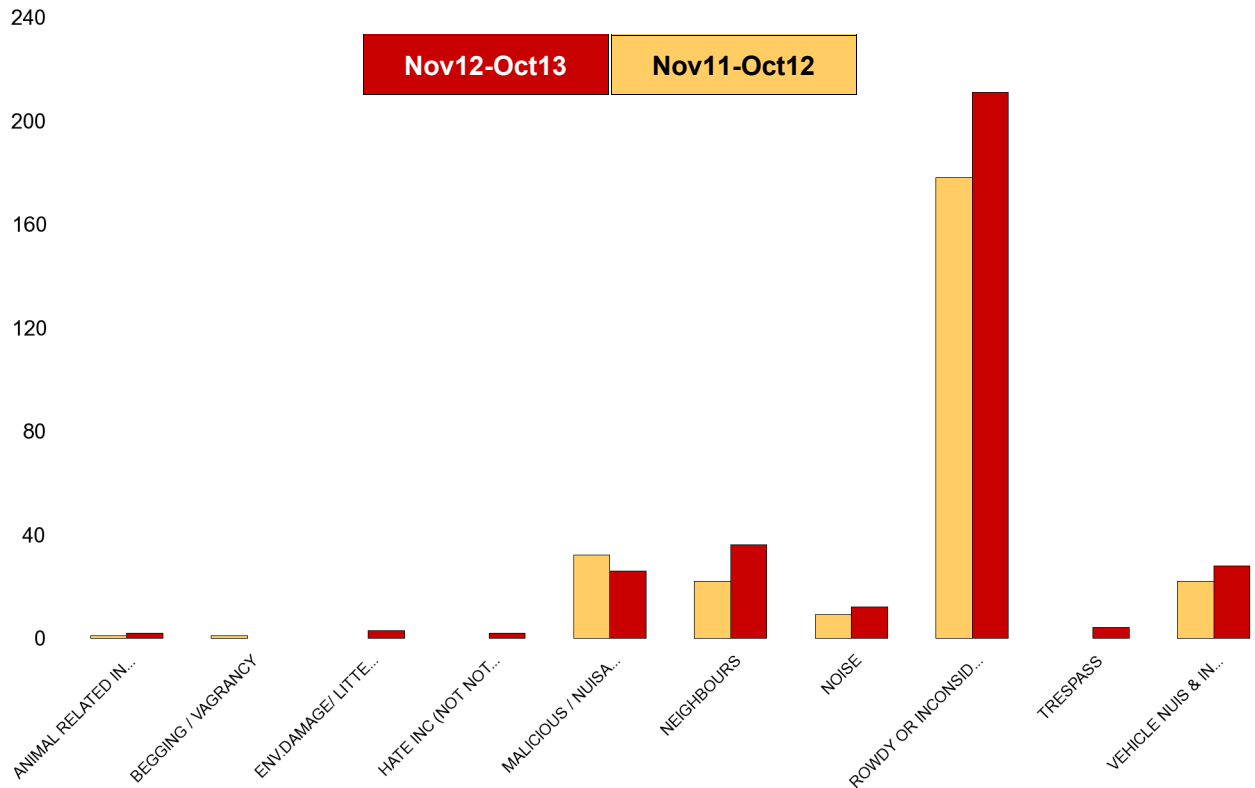
NSIR Closing Cat. 1 Desc	No of Incidents (Nov12-Oct13)	No of Incidents (Nov11-Oct12)	+/- Incidents	% Change Incidents
ANIMAL RELATED INC ANTI-SOCIAL	3	3	0	0%
BEGGING / VAGRANCY	4	1	3	300%
ENV.DAMAGE/ LITTER/ NEEDLES	1	1	0	0%
MALICIOUS / NUISANCE COMMS	19	12	7	58%
NEIGHBOURS	15	17	-2	-12%
NOISE	10	10	0	0%
PROSTITUTION RELATED ACTIVITY	1	0	1	0%
ROWDY OR INCONSIDERATE BEHAV	166	140	26	19%
TRESPASS	2	0	2	0%
VEHICLE NUIS & INAPPROP VEH US	11	13	-2	-15%
Sum:	232	197	35	18%



Kettering Town Forum Report

Pipers Hill

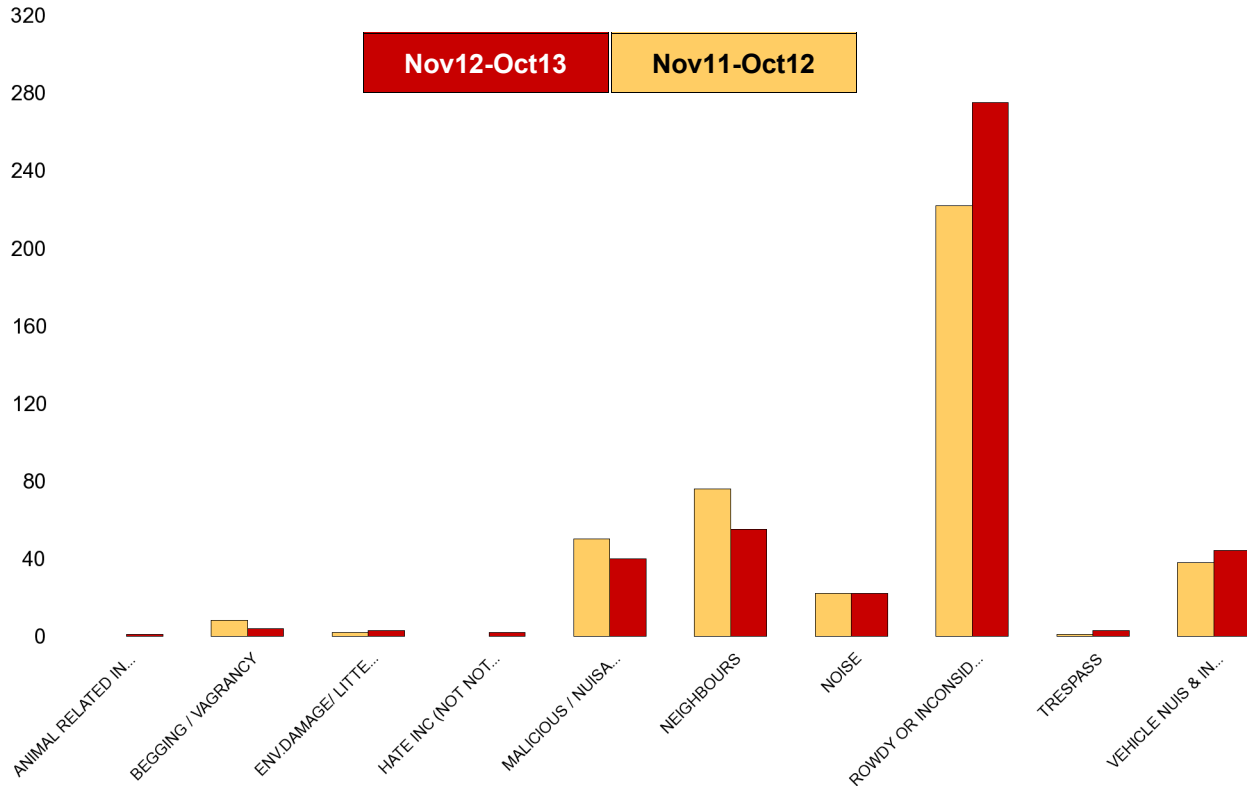
NSIR Closing Cat. 1 Desc	No of Incidents (Nov12-Oct13)	No of Incidents (Nov11-Oct12)	+/- Incidents	% Change Incidents
ANIMAL RELATED INC ANTI-SOCIAL	2	1	1	100%
BEGGING / VAGRANCY	0	1	-1	-100%
ENV.DAMAGE/ LITTER/ NEEDLES	3	0	3	0%
HATE INC (NOT NOTIFIABLE CRIME	2	0	2	0%
MALICIOUS / NUISANCE COMMS	26	32	-6	-19%
NEIGHBOURS	36	22	14	64%
NOISE	12	9	3	33%
ROWDY OR INCONSIDERATE BEHAV	211	178	33	19%
TRESPASS	4	0	4	0%
VEHICLE NUIS & INAPPROP VEH US	28	22	6	27%
Sum:	324	265	59	22%



Kettering Town Forum Report

St Michaels and Wicksteed

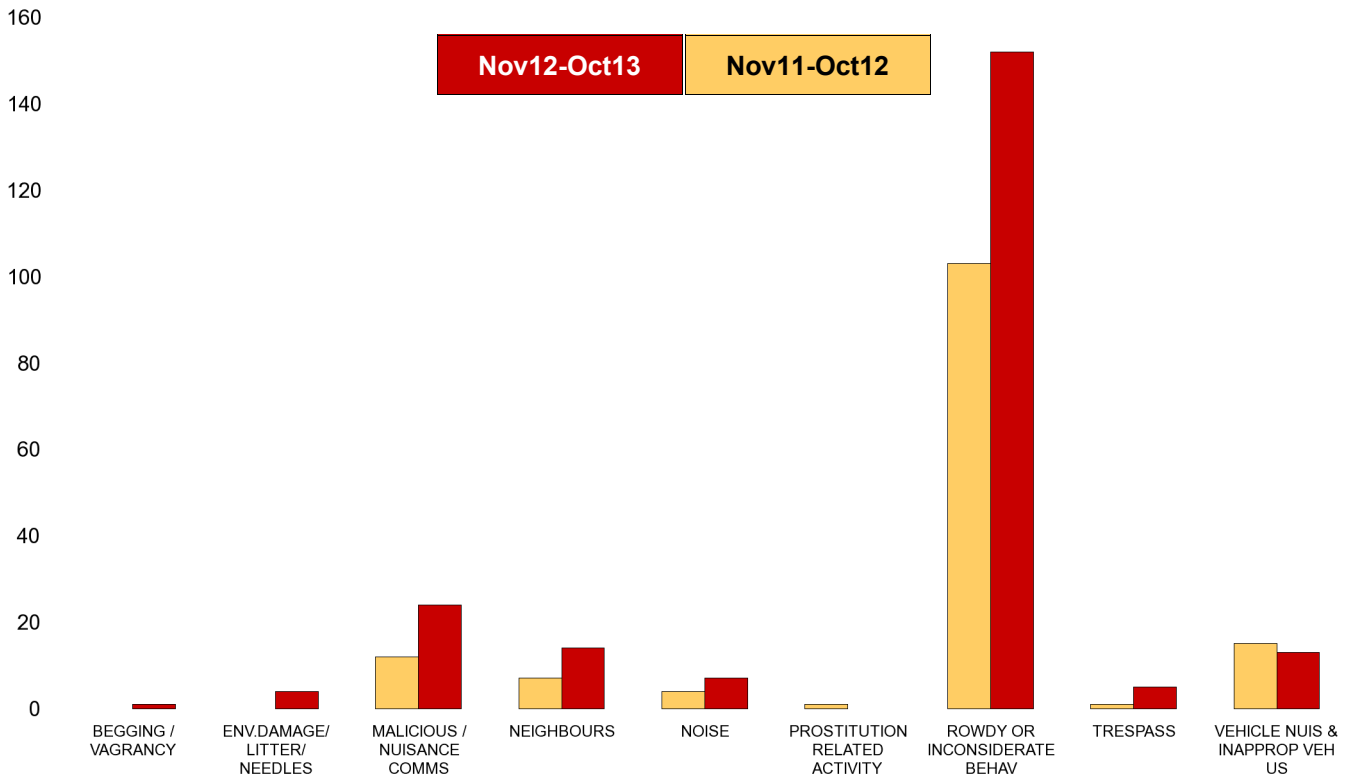
NSIR Closing Cat. 1 Desc	No of Incidents (Nov12-Oct13)	No of Incidents (Nov11-Oct12)	+/- Incidents	% Change Incidents
ANIMAL RELATED INC ANTI-SOCIAL	1	0	1	0%
BEGGING / VAGRANCY	4	8	-4	-50%
ENV.DAMAGE/ LITTER/ NEEDLES	3	2	1	50%
HATE INC (NOT NOTIFIABLE CRIME	2	0	2	0%
MALICIOUS / NUISANCE COMMS	40	50	-10	-20%
NEIGHBOURS	55	76	-21	-28%
NOISE	22	22	0	0%
ROWDY OR INCONSIDERATE BEHAV	275	222	53	24%
TRESPASS	3	1	2	200%
VEHICLE NUIS & INAPPROP VEH US	44	38	6	16%
Sum:	449	419	30	7%



Kettering Town Forum Report

St Peters

NSIR Closing Cat. 1 Desc	No of Incidents (Nov12-Oct13)	No of Incidents (Nov11-Oct12)	+/- Incidents	% Change Incidents
BEGGING / VAGRANCY	1	0	1	0%
ENV.DAMAGE/ LITTER/ NEEDLES	4	0	4	0%
MALICIOUS / NUISANCE COMMS	24	12	12	100%
NEIGHBOURS	14	7	7	100%
NOISE	7	4	3	75%
PROSTITUTION RELATED ACTIVITY	0	1	-1	-100%
ROWDY OR INCONSIDERATE BEHAV	152	103	49	48%
TRESPASS	5	1	4	400%
VEHICLE NUIS & INAPPROP VEH US	13	15	-2	-13%
Sum:	220	143	77	54%



Kettering Town Forum Report

William Knibb

NSIR Closing Cat. 1 Desc	No of Incidents (Nov12-Oct13)	No of Incidents (Nov11-Oct12)	+/- Incidents	% Change Incidents
ANIMAL RELATED INC ANTI-SOCIAL	2	3	-1	-33%
BEGGING / VAGRANCY	8	3	5	167%
ENV.DAMAGE/ LITTER/ NEEDLES	7	4	3	75%
HATE INC (NOT NOTIFIABLE CRIME	1	2	-1	-50%
MALICIOUS / NUISANCE COMMS	56	54	2	4%
NEIGHBOURS	53	49	4	8%
NOISE	33	33	0	0%
ROWDY OR INCONSIDERATE BEHAV	643	584	59	10%
TRESPASS	4	4	0	0%
VEHICLE NUIS & INAPPROP VEH US	18	15	3	20%
Sum:	825	751	74	10%

