

## **Kettering Borough Council's Sports Facilities Strategy and Action Plan 2010 - 2021**

### **Appendices**

- Appendix 1: Participation levels
- Appendix 2: Health
- Appendix 3: Economy
- Appendix 4: Population growth
- Appendix 5: Schools
- Appendix 6: Definition of sport
- Appendix 7: Demography
- Appendix 8: Market Segmentation
- Appendix 9: Accessibility
- Appendix 10: Transport
- Appendix 11: Population Characteristics within Facility Catchment
- Appendix 12: Summary of responses from sports clubs and National Governing Bodies of Sport
- Appendix 13: Outcomes of the research
- Appendix 14: Parish plans and village design statements
- Appendix 15: Options
- Appendix 16: Summary of identified needs
- Appendix 17: The respondents of the community questionnaire
- Appendix 18: The value of sport
- Appendix 19: Taking Part: England's survey of culture, leisure and sport
- Appendix 20: The European sports charter
- Appendix 21: Copy of the community questionnaire
- Appendix 22: Questions to National Governing Bodies of Sport
- Appendix 23: Questions to sports clubs
- Appendix 24: Facilities in and around Kettering Borough

Appendix 25: Facility requirements of the Kettering East development

Appendix 26: Method

Appendix 27: Links to other policies

Appendix 28: Criteria for support to sport

Appendix 29: Who did we consult?

DRAFT

## Appendix 1: Participation levels:

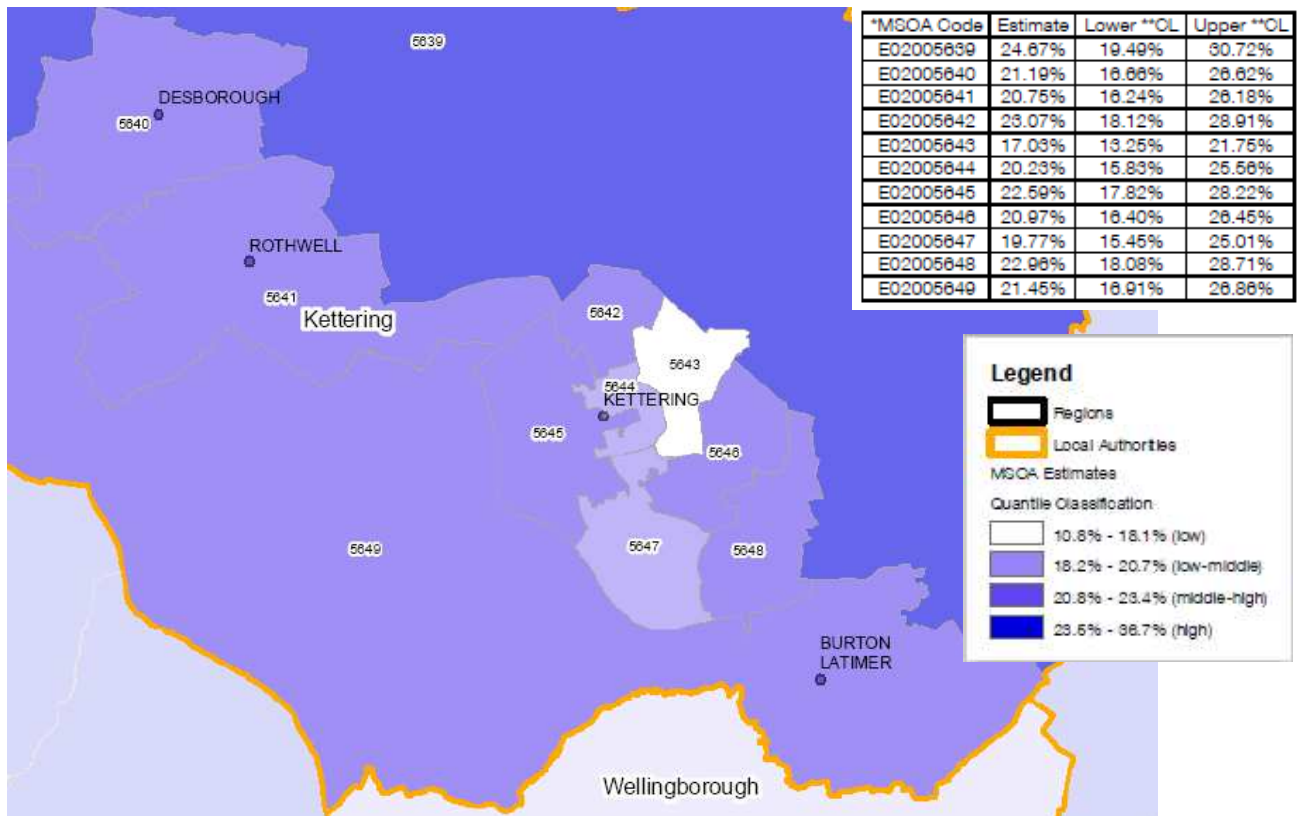
The 2006 Active People survey showed that Borough residents aged over 16 are less active than the national average. It also demonstrates that people aged over 55, people with disabilities, people from low socio-economic backgrounds and females are less likely to participate in sport than the National average.

The findings of the Active People Survey 2006 shows that Kettering Borough has the second lowest percentage of people who regular participate in a sport activity and active recreation (19.3%) compared to the other Northamptonshire districts. It is also lower than the percentage for East Midlands (20.8%) and England (21%). Comparing the survey results of each Local Authority area with the national results show that Kettering Borough is in the bottom 25% of Local Authorities for this measure (3 days a week 30 mins moderate intensity)

The survey also demonstrated that 6.3% of adults do at least one hour per week of volunteering in sport, 1.1% higher than Sport England would expect, which places the borough in the top quartile for volunteering nationally. The borough was also placed in the bottom quartile nationally for club membership, people receiving tuition and satisfaction with local sports provision.

The Active People survey demonstrated that the lowest participation levels in sport in the borough are amongst people aged 55 and over (9.4%) and people with a limiting disability (11.1%), although the latter is higher than the county average. The largest differences between participation rates in The borough and the county are among 16 to 34 year olds (a difference of -3.9%) and people in intermediate occupations (NS-SEC 3 B) (a difference of -3.7%).

Sport England has used the data from the Active People survey to produce a map that shows participation estimates by middle super output areas. An extract of this map shows that areas of least participation (represented in light colours) are in the town of Kettering. The full map can be accessed at [http://www.sportengland.org/0014mc\\_sae\\_kettering.pdf](http://www.sportengland.org/0014mc_sae_kettering.pdf):



More information on the Kettering Borough results and Northamptonshire results can be found in the Community sport profile 2008 – Northamptonshire  
<http://www.sportengland.org/northamptonshire.pdf>

The second Active People survey demonstrated an increase in participation in The borough from 19.3% to 22.6%. Because of the small sample size of the second survey (500) this increase is not considered to be a significant and we are therefore continuing to focus resources on the results of the 2006 Active People survey.

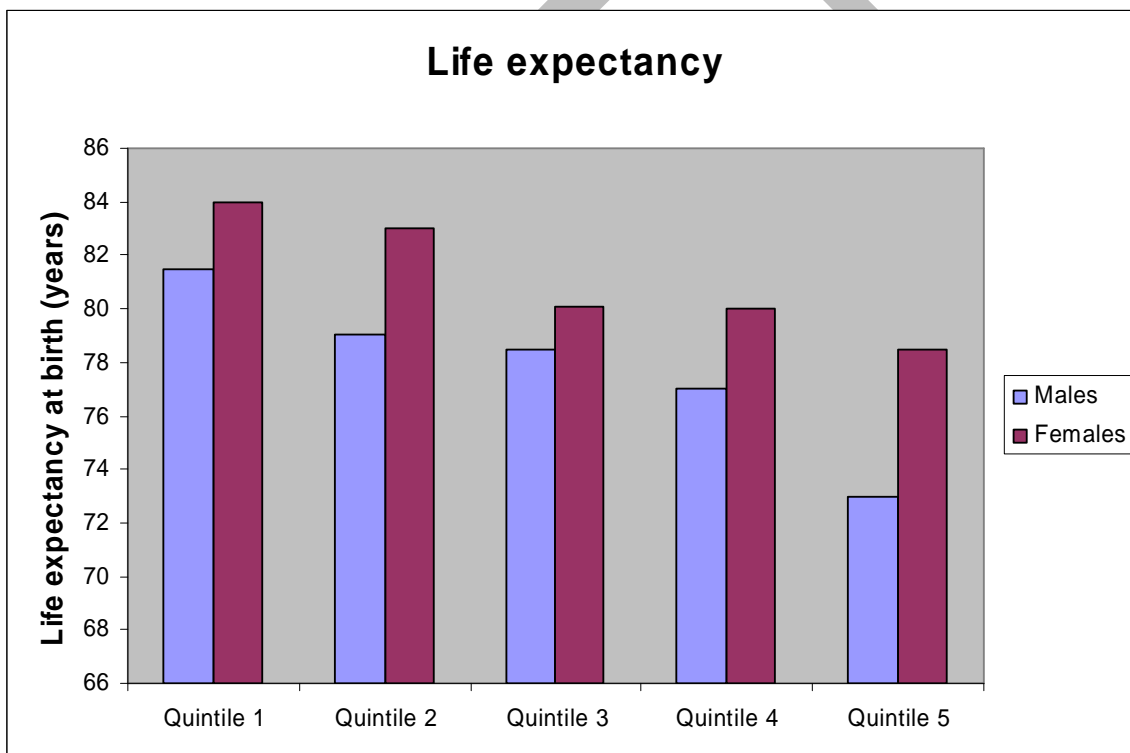
## Appendix 2: Health

### Health:

The Health Profile for The borough in 2010 demonstrates that:

- The health of people in The borough is generally similar to the England average
- There are inequalities within the borough by gender, level of deprivation and ethnicity. For example, men from the least deprived areas of the borough can expect to live 8 years longer than those in the most deprived areas.
- Rates of physically active children are worse than the England average
- It is estimated that the proportion of adults that are obese is worse than the England average

Life expectancy in quintile 1 (the least deprived quintile) is higher than quintile 5 (the most deprived quintile). Life expectancy is higher for females than males across all quintiles.



Kettering Borough Council offers an activity on referral programme at the Kettering Swimming Pool and Desborough Leisure Centre and also offers a Cardiac Rehabilitation Phase 4 Programme at Desborough Leisure Centre. The aging population referred to earlier in this document is likely to have implications on these services.

Kettering Borough Council also offers MEND courses for children in the borough who are above their ideal weight.

## Appendix 3: Economy

### Economy:

In the borough (NOMIS official labour market statistics 2008/2009):

- 84.4% of people aged between 16 and 64 are economically active, compared with 80.9% in the East Midlands and 78.9% across Great Britain
- 88.2% of the economically active people in the borough are male, 80% are female



The graph above demonstrates that the borough has a lower than average number of residents in managerial and professional occupations, and a higher than average number of residents in administrative and skilled occupations.

We expect the new population of the borough to result in a shift in the borough's demographics with a greater percentage of our residents employed in professional occupations.

A detailed report on the economic importance of sport in the East Midlands can be found on Sport England's website via the link below:

[http://www.sportengland.org/research/economic\\_importance\\_of\\_sport.aspx](http://www.sportengland.org/research/economic_importance_of_sport.aspx)

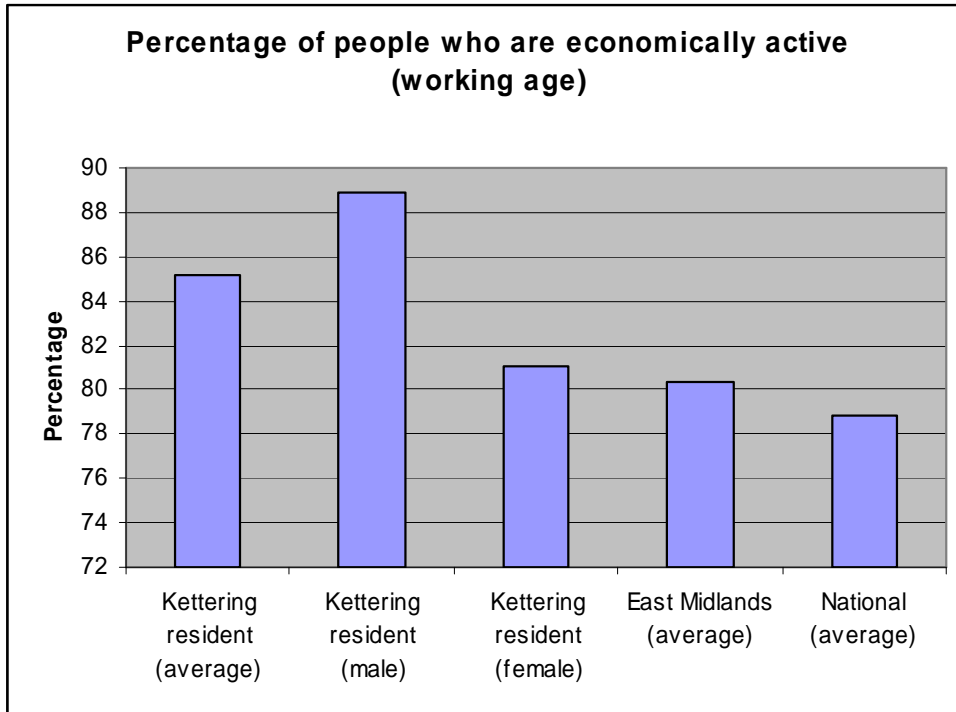
In the East Midlands region:

- There was a 50% increase in consumer spending (current prices) on participation subscriptions and fees over the period 2000-2005.
- Sport related activity generated £1,258m and £1,321m in 2004 and 2005 respectively. This is equivalent to 1.9% of total value added in the region (2005).
- 40,700 people are employed in sport related employment corresponding to 1.9% of total employment in the region (2005).

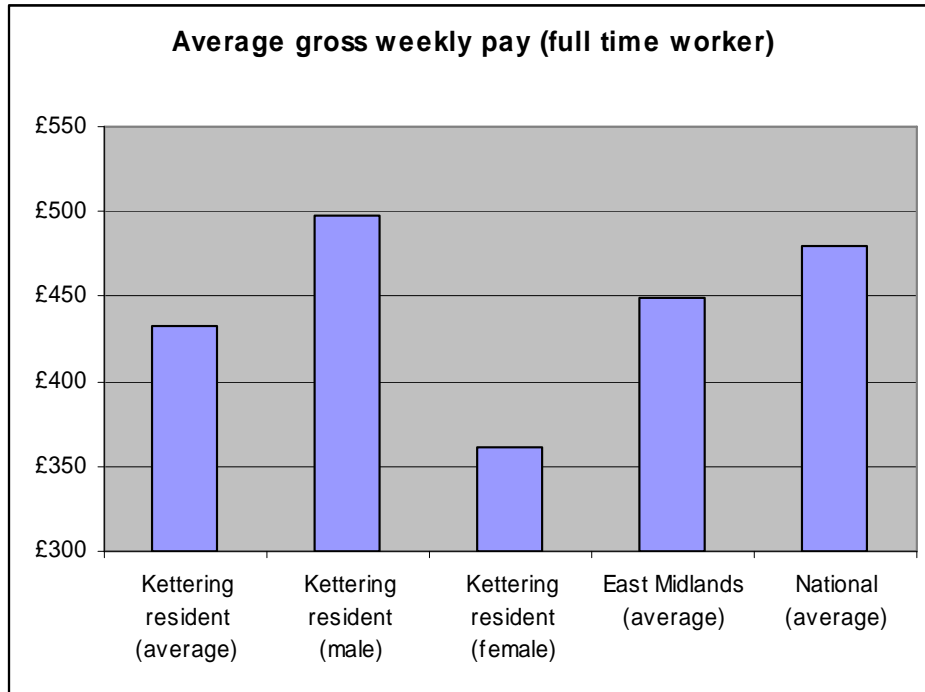
A detailed report on the economic importance of sport in the East Midlands can be found on Sport England's website via the link below: [http://www.sportengland.org/2005\\_east\\_midlands.pdf](http://www.sportengland.org/2005_east_midlands.pdf)

In the borough (NOMIS official labour market statistics):

- 85.2% of people aged between 16 and 64 are economically active, compared with 80.3% in the East Midlands and 78.8% across Great Britain
- 88.9% of the economically active people in the borough are male, 81.1% are female



- The average gross weekly pay for a full time resident in the borough is £432.30 per week, compared with £449.60 in the East Midlands and £479.30 across Great Britain
- The average gross weekly pay for a male resident of the borough is £497.70. The average gross weekly pay for a female resident of the borough is £361.80



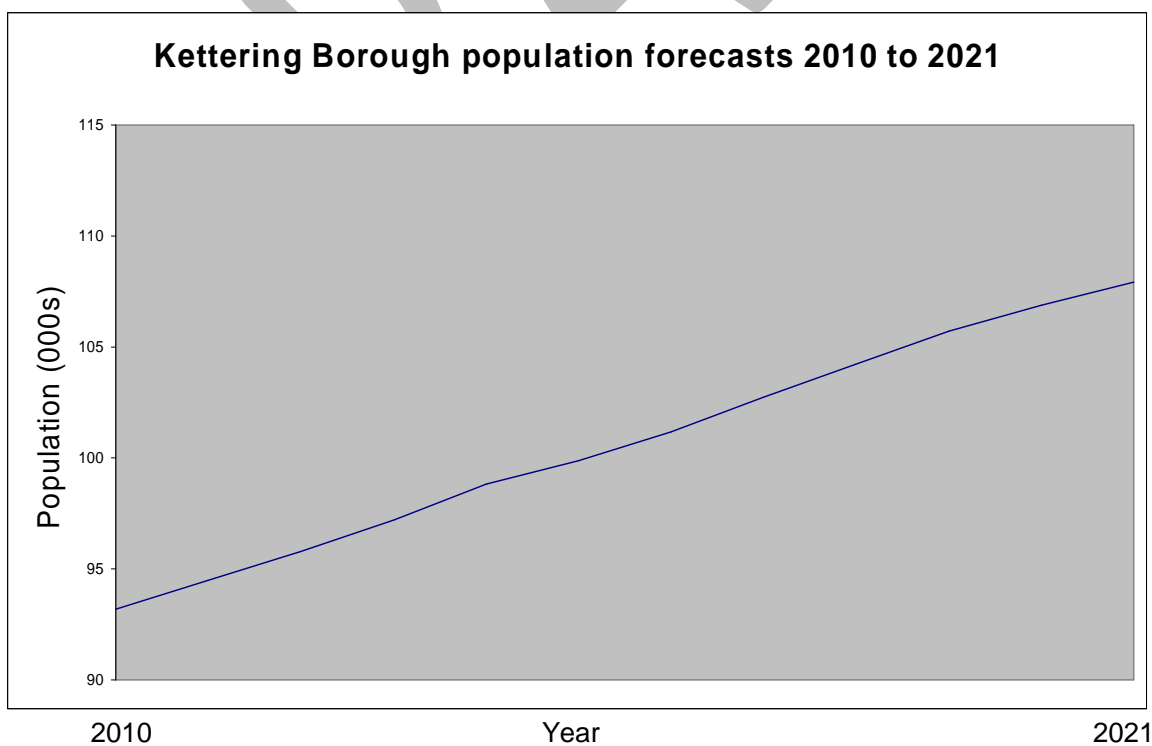


## Appendix 4: Population growth

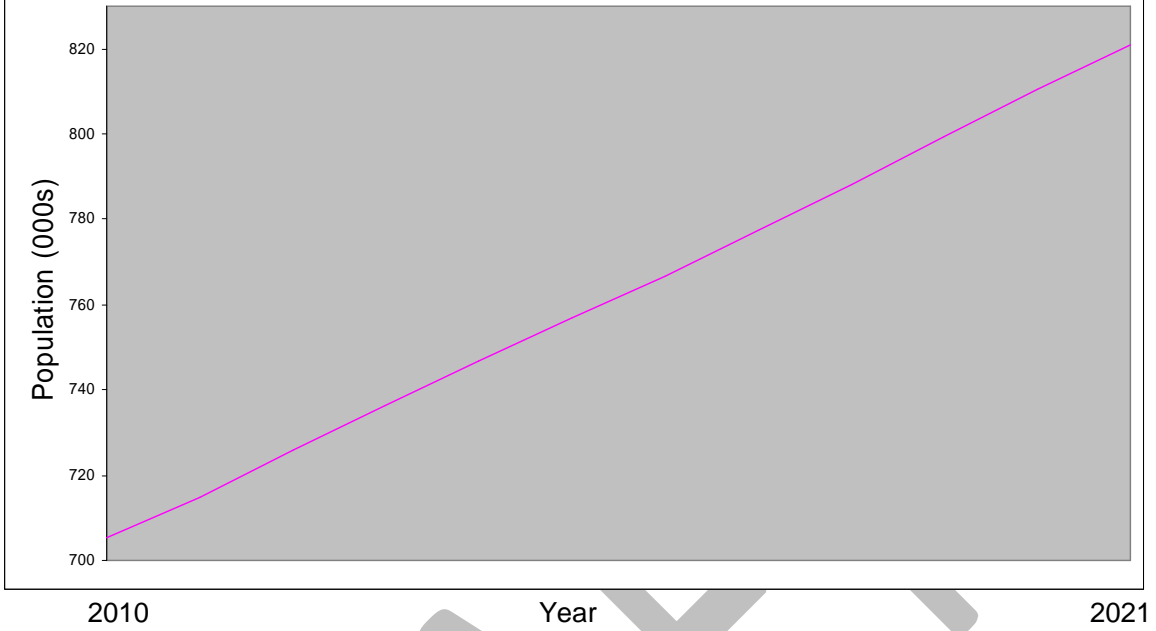
Draft housing projections:

These figures are under review and are therefore subject to change

Year	Kettering Borough Population	Northamptonshire Population	Kettering Borough population as a percentage of Northamptonshire
2010	93,200	705,400	13.21%
2011	94,500	714,900	13.22%
2012	95,800	726,000	13.20%
2013	97,200	736,500	13.20%
2014	98,800	746,900	13.23%
2015	99,900	757,000	13.20%
2016	101,200	766,600	13.20%
2017	102,700	777,400	13.21%
2018	104,200	788,100	13.22%
2019	105,700	799,300	13.22%
2020	106,900	810,300	13.19%
2021	107,900	820,900	13.14%



### Northamptonshire Population Forecast 2010 to 2021



Indicates the likely location of growth, not the size or specific position of the development



## **Appendix 5: Schools**

Schools can play a crucial role in the provision of sports facilities in the Borough.

Northamptonshire County Council is waiting for details of how the Building Schools for the Future (BSF) programme will be replaced following the Government's decision not to proceed BSF in its present format. In the meantime Northamptonshire County Council has embarked on the development of an Academies programme which will start on site in 2010.

Northamptonshire County Council will continue to liaise with Kettering Borough Council and other partners to look at the development of PE & Sport within these major developments. It is crucial to maximise the opportunities that the programme can bring to dual use of secondary schools and to ensure that appropriate commitment to community use of school facilities is included within the contracts.

Primary schools are funded through "primary capital programme" funding, however, this is subject to a National Spending Review due to be carried out later this year. The programme in its current format commits to renewing at least half of all primary school buildings by 2022-23. The aim is to create primary schools that are equipped for 21st-century teaching and learning, and are at the heart of their communities with children's services in reach of every family. The Primary Capital Programme will encourage and support local authorities to take a long-term strategic approach to capital investment and to transform teaching and learning in primary schools, with the Children's Plan at its heart. In order to get the most from the programme Northamptonshire County Council is expected to join the primary capital funding with other capital funding streams. As with secondary school and academy developments, it will be crucial for an officer from Kettering Borough Council to remain in contact with the relevant officers at Northamptonshire County Council in order to maximise the opportunities that the programme can bring to dual use of primary schools.

## Appendix 6: Definition of Sport

*'Sport means all forms of physical activity which, through casual or organised participation, aims at expressing or improving physical fitness and mental well-being, forming social relationships or obtaining results in competition at all levels'.*

Council of Europe definition, adopted by Sport England. This is an inclusive definition and includes exercise, informal recreation, countryside and outdoor pursuits.

## Appendix 7: Demography

According to the 2001 census the population of Kettering Borough was split into the following age, gender, disability and ethnic origins:

Age:

Age range	10-14	15	16-17	18-19	20-24	25-29	30-44	45-59	60-64	65-74	75-84	85-89	90+
Percentage of 10+ population within age range	7.7%	1.4%	2.8%	2.4%	5.9%	7.7%	26.1%	23.0%	5.3%	8.9%	6.5%	1.5%	0.8%

Gender:

Gender	Male	Female
Percentage of the population within gender	49%	51%

Ethnicity:

Ethnicity	White	Mixed	Asian	Black	Chinese	Other
Percentage of the population within ethnicity	96.7%	0.7%	1.7%	0.4%	0.3%	0.2%

Disability:

Disability	Yes	No
Percentage of the population within gender	16.2%	83.8%

Approximately 77% of the Borough's 38,000 dwellings are privately owned, 6% are privately rented, and a further 14% are either Council or housing association rented properties. Whilst Kettering Borough was 209th out of 354 authorities in the ODPM Index of Multiple Deprivation in 2004 (where 1 is the most deprived), 8% of the population of the borough live within the 20% most deprived areas nationally (and 2% live in the 10% most deprived areas nationally), as measured by the Index of Multiple Deprivation. Therefore, while the Borough is not characterised by widespread social exclusion, there are nevertheless pockets of significant deprivation in the area.

DRAFT

**Appendix 8: Market Segmentation**

Sport England has developed a segmentation model, made up of nineteen 'sporting' segments which help us to understand the attitudes, motivations and perceived barriers to sports participation. Created by Experian Business Strategies, the segments are based on data from the Active People and Taking Part surveys as well as neighbourhood statistics, census data and health data. The tool demonstrates that the most highly represented groups in the borough are Tim (9.4%), Philip (9.0%), Elsie & Arnold (8.7%) and Roger & Joy (7.3%). Kettering Borough is most above the National percentage for Philip. The borough is particularly low on Ralph & Phyllis (3%), Paula (2.4%) and Norma (1.3%).

Market Segment	Key characteristics	Percentage of population		Activities and sports that appeal to segment	Things that would encourage greater participation
		Kettering Borough	National		
<b>MOST REPRESENTED SEGMENTS IN THE BOROUGH</b>					
<b>Tim</b> Settling down males	Tim loves sport. Since his job got busier he doesn't do as much as he used to, but he still manages trips to the gym, weekends at the canoe club and the odd mid-week game of squash. He hopes things won't change too much when the baby comes, but he knows they may not be able to enjoy such regular snowboarding holidays in the future.	9.4%	9.4%	Canoeing Skiing  Cricket Golf  Cycling  Squash Football	Busy lives are a barrier to doing more
<b>Philip</b> Comfortable mid life males	Philip still keeps up his love of sport, hindered only by office pressures. He plays badminton in a local team, and if he gets home early enough, enjoys a swim at the health club. He shares football season tickets with his son, together they play cricket for the local Sunday side – alas, his rugby days are over.	9.0%	7.8%	Sailing Gym  Football Jogging Badminton Golf Cycling Cricket	Help with childcare might encourage this type to participate more, though most just find their lives too busy. Those who don't participate find it difficult to find time. Cost is not an issue
<b>Elsie &amp; Arnold</b> Retirement home singles	Lowest participation rates of the 19 segments.  Elsie is 81 and lives on her own in warden-controlled sheltered accommodation.	8.7%	8.3%	Walking Bowls Dancing Low-impact exercises	Safer neighbourhoods or people to go with would encourage this segment to walk more.

	<p>The sheltered housing is good for Elsie. The warden checks on her if she needs anything, and they have card mornings, dance afternoons and bingo evenings in the community lounge each week.</p> <p>Elsie can no longer drive, her cataracts got too bad. Instead she looks forward to her once a week walk to the post office to collect her pension, having a good 'natter' with the lady who works there.</p>				Organised, low-impact and low-intensity events would be welcomed.
<b>Roger &amp; Joy</b> Early Retirement Couples	<p>Roger walks the dog to the paper-shop each morning, and often plays golf. When Joy's around, they often go for a walk together or help out with childcare.</p> <p>Sometimes Joy goes to over fifties aqua aerobics class at the leisure centre. Her daughter said it might be good exercise and easier on her joints.</p>	7.3%	6.2%	<p>Swimming Sailing</p> <p>Walking Golf</p> <p>Aqua Aerobics Shooting Bowls Fishing</p>	Better facilities and improved transport may encourage greater participation. Those that don't participate are not really interested or their health is not good enough
<b>LEAST REPRESENTED SEGMENTS IN THE BOROUGH</b>					
<b>Ralph &amp; Phyllis</b> Comfortable Retired Couples	<p>Both Ralph and Phyllis still feel there is much of life to live. They enjoy playing golf together, and Ralph competes at weekends sometimes. Phyllis still likes to go for the occasional swim while Ralph is out trout fishing, and they also love to go for long walks together. In their earlier years the pace was faster, but they're proud they're still active, enjoying life and can just about keep up with the tiring grandchildren.</p>	3%	3.7%	<p>Bowls Snooker</p> <p>Golf Walking</p> <p>Tennis Fishing Table Tennis Swimming</p>	Better transport and people to go with would encourage participation
<b>Paula</b> Stretched Single Mums	<p>Paula, 33, lives in a council owned property with her three children. Jace and Kyle are at school now, but Ruby is still at home.</p> <p>A couple of times a week a friend looks after Ruby so Paula can get a break at afternoon bingo. At the weekend she sometimes takes the kids swimming or ice skating. It's not cheap, but they need entertaining and they're already bored of the computer game she bought them last week.</p>	2.4%	3.8%	<p>Swimming Aerobics Utility Walking Ice Skating</p>	Improved transport, help with childcare and cheaper admission would encourage greater participation, although there is general disinterest
<b>Norma</b> Later Life		1.3%		Walking	Cheaper

Ladies	Norma is 60 and has now retired.  She likes to get out for a bit in the day. She goes to an aqua aerobics class at the leisure centre, which is heavily subsidised for her as a pensioner. She also walks to buy a lottery ticket, go to the library or to afternoon bingo. She has to take her time though, as she's not as well these days, having seen the late onset of diabetes in the last few years. When she gets home, Norma likes to sit and watch TV, knit or do some embroidery. At weekends her family usually visit her.		2%	Keep Fit Swimming Aqua Aerobics	admissions and people to accompany them might encourage this group to do more
--------	--	--	----	---------------------------------------	---

The definitions of all nineteen groups can be found on Sport England's website, alongside the full breakdown for the borough. A complete graph of the profiles in the borough can be found at: [http://www.sportengland.org/kettering\\_borough\\_council.pdf](http://www.sportengland.org/kettering_borough_council.pdf)

Market town representation appears to be as follows:

**Burton Latimer** – a high representation of comfortable midlife males (known as Philip) with multiple segments towards the north west.

**Desborough** – Settling down males (Tim) towards the centre and north, early retirement couples (Roger & Joy) towards the south and a little bit of comfortable midlife males (Philip) towards the centre.

**Kettering** – A real mix including early retirement couples (Roger & Joy), comfortable midlife males (Philip), pub league team mates (Kev), stretched single mums (Paula), sports team drinkers (Jamie), retirement home singles (Elsie & Arnold), and comfortable retired couples (Ralph & Phyllis)

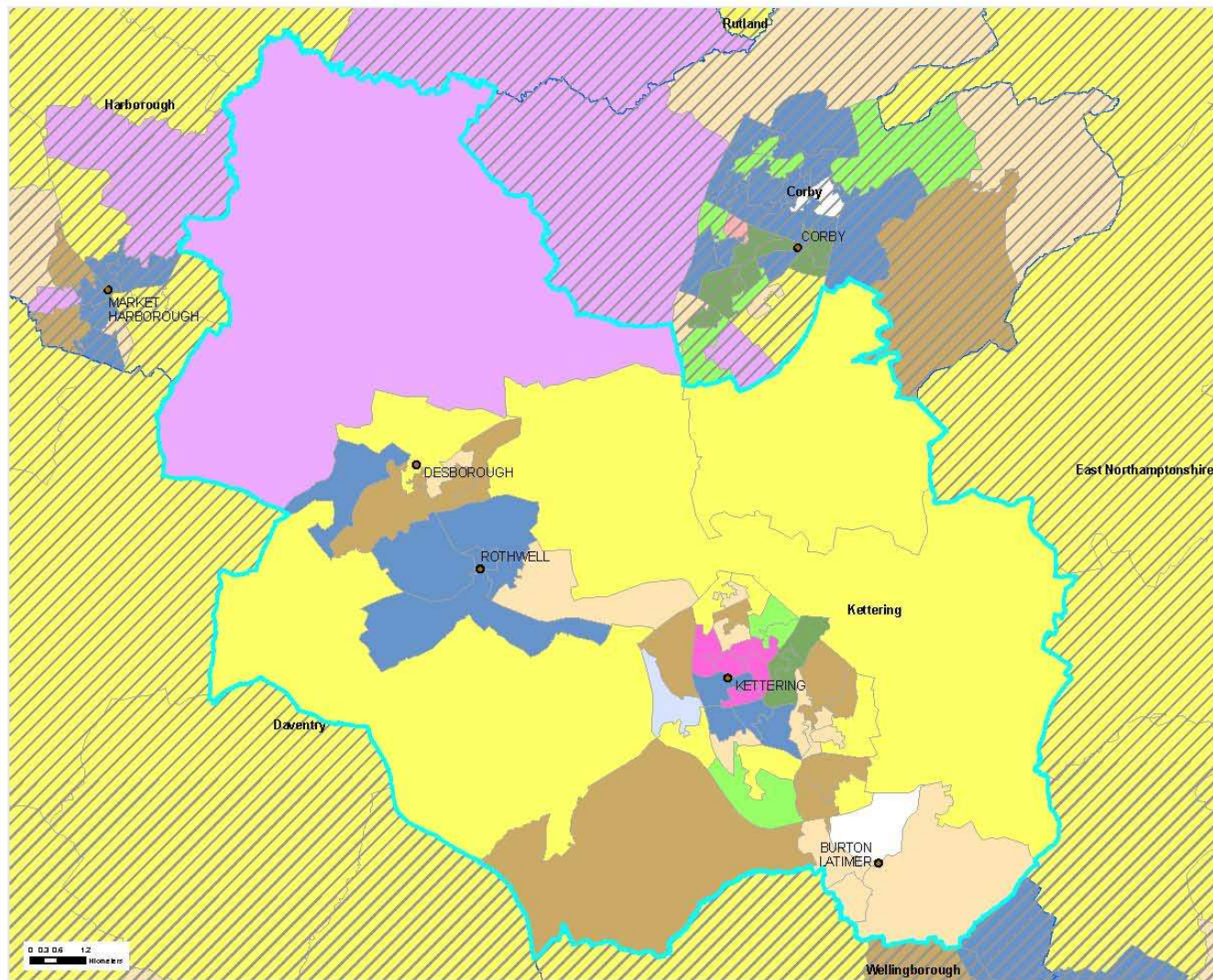
**Rothwell** – A large dominance of retirement home singles (Elsie & Arnold), with comfortable midlife males (Philip) in the rural East towards Kettering



## Dominant Market Segmentation Map for the Local Authority of Kettering

Creating an active nation through sport

Dominant Market Segmentation data is shown at the Lower Super Output Area (LSOA) level. Where more than one of the 19 market segments is dominant the segment is classified as "Multiple Segments". Note that some market segments are never dominant and therefore not shown in the Legend.



### Legend

- Local Authorities
- Selected Local Authority

### Dominant Segment by LSOA

- Multiple Segments
- Ben - Competitive Male Urbanites (A01)
- Jamie - Sports Team Drinkers (A02)
- Chloe - Fitness Class Friends (A03)
- Leanne - Supportive Singles (A04)
- Helena - Career Focused Females (B05)
- Tim - Settling Down Males (B06)
- Alison - Stay at Home Mums (B07)
- Jackie - Middle England Mums (B08)
- Kev - Pub League Team Mates (B09)
- Paula - Stretched Single Mums (B10)
- Philip - Comfortable Mid-Life Males (C11)
- Elaine - Empty Nest Career Ladies (C12)
- Roger & Joy - Early Retirement Couples (C13)
- Brenda - Older Working Women (C14)
- Terry - Local 'Old Boys' (C15)
- Ralph & Phyllis - Comfortable Retired Couples (D17)
- Elsie - Retirement Home Singles (D19)

Further market segmentation data has been created by Experian in the form of Mosaic, which classifies all consumers in the United Kingdom in 61 types aggregated into 11 groups. The breakdown for the borough and definitions of the groups can be seen below but demonstrates that the most highly represented groups in the borough are Ties of Community (29.2%), Happy Families (20.8%) and Suburban Comfort (19.1%). The borough is also higher than the National average in all of these groups.

Mosaic group	NN6	NN9	NN14	NN15	NN16	NN18	LE16	TOTAL	Kettering Borough percentage	National percentage
Ties of Community	-	-	2,443	3,514	5,394	-	-	11,351	29.25%	16.04%
Happy Families	-	-	2,210	3,732	2,105	-	9	8,056	20.76%	10.76%
Suburban Comfort	-	2	2,677	3,119	1,404	1	210	7,413	19.10%	15.10%
Blue Collar Enterprise	-	-	941	756	839	-	-	2,536	6.53%	11.01%
Symbols of success	30	2	890	814	272	17	500	2,525	6.51%	9.62%
Grey Perspectives	1	-	558	1,062	303	-	54	1,978	5.10%	7.88%
Municipal Dependency	-	-	146	563	1,219	-	-	1,928	4.97%	6.71%
Twilight Subsistence	-	-	260	347	736	-	-	1,343	3.46%	3.88%
Welfare borderline	-	-	39	351	552	-	-	942	2.43%	6.43%
Rural Isolation	33	4	277	33	41	16	125	529	1.36%	5.39%
Urban Intelligence	-	-	1	100	108	-	-	209	0.54%	7.12%
<b>TOTAL</b>	<b>64</b>	<b>8</b>	<b>10,442</b>	<b>14,391</b>	<b>12,973</b>	<b>34</b>	<b>898</b>	<b>38810</b>	<b>100%</b>	<b>99.94%</b>

Postcodes relate to the wards as follows:

POSTCODE	DESCRIPTION
LE16	Desborough Loatland Queen Eleanor and Buccleuch Welland
LE18	Welland
NN1	Queen Eleanor and Buccleuch
NN12	Desborough Loatland
NN14	All Saints Barton Desborough Loatland Desborough St. Giles Northfield Queen Eleanor and Buccleuch Rothwell Slade St. Michaels and Wicksteed St. Peters Welland William Knibb
NN15	Avondale Grange Barton Burton Latimer Ise Lodge Pipers Hill Queen Eleanor and Buccleuch Slade St. Michaels and Wicksteed St. Peters William Knibb
NN16	All Saints Avondale Grange Brambleside Desborough Loatland Desborough St. Giles Northfield Pipers Hill Queen Eleanor and Buccleuch Rothwell Slade St. Michaels and Wicksteed St. Peters William Knibb
NN18	Queen Eleanor and Buccleuch
NN6	Slade
NN9	Burton Latimer Queen Eleanor and Buccleuch

**Ties of Community:** Ties of Community people live in very established, rather old-fashioned communities. Traditionally, people in this group married young and had manual jobs in industries such as docks and mines. Today, this group has a younger than average population; many are married or cohabiting and bringing up young children. Social support networks are strong, with friends and relations nearby. These neighbourhoods are often characterised by late nineteenth century housing. Many homes have been improved, and are comfortable if somewhat cramped places to live (usually two rooms and a back extension downstairs, two or three small bedrooms, and a modest rear garden). Originally, such neighbourhoods were within short walking distance of local factories and shops, and many still have access to small corner shops, often owner-managed by recently arrived Asian families. They like to use local branches of trusted financial services groups with a friendly image.

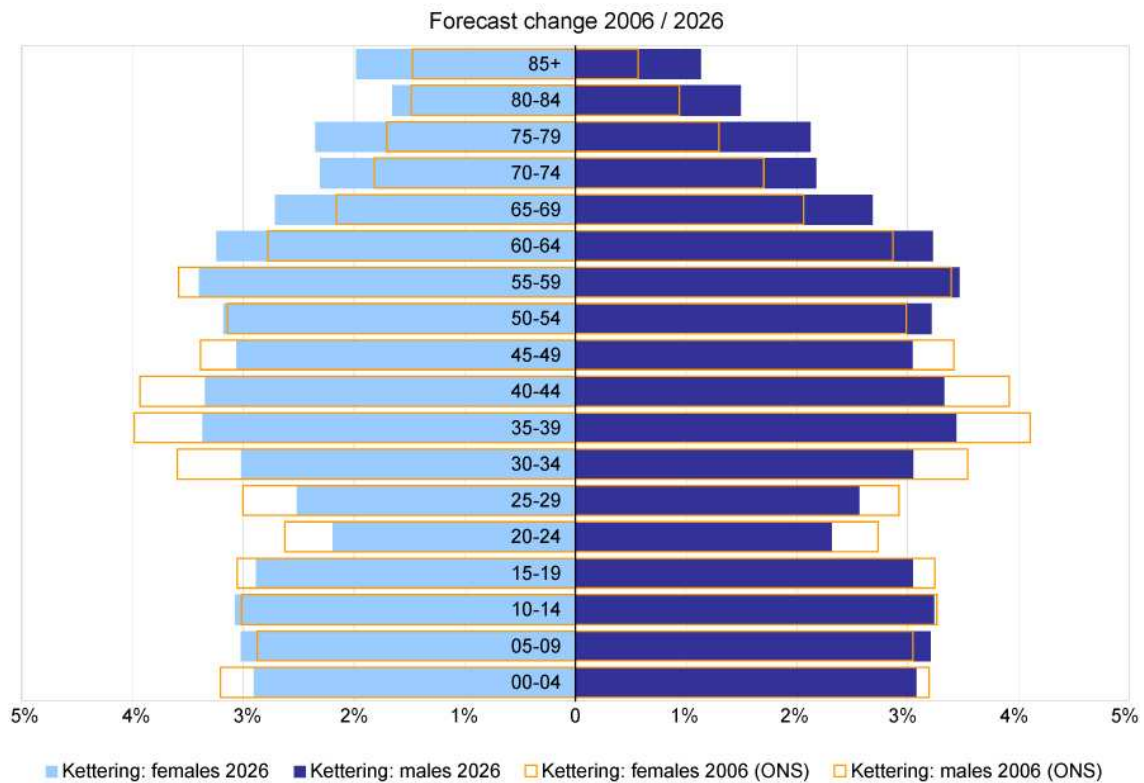
**Happy Families:** Happy Families contains people whose focus is on career, home and family. They are mostly young couples, married or living with their partner, raising pre-school and school-age children. This group's educational attainment has enabled them to secure positions in large organisations in either the private or the public sector, with the prospect of future career advancement. These neighbourhoods consist of modern, purpose-built family housing, either detached or semi-detached, on estates with other young families. These estates are often some considerable distance from major commercial centres but an easy driving distance from many potential workplaces, such as major new industrial or office 'parks'.

**Suburban Comfort:** Suburban Comfort people have established themselves and their families in comfortable homes in mature suburbs. Children are becoming independent, work is less of a challenge and interest payments on homes and other loans are becoming less burdensome. These people live in inter-war suburbs and work mostly in intermediate level, white-collar occupations, where they are beginning to plan for approaching retirement. They are likely to be married and most have children, who may be at secondary school or university, or grown up and starting families of their own. People in this group value independence and self-reliance, and tend to rely on their own judgment, rather than social or community attitudes, when taking key decisions. Although they expect neighbours to be helpful, they do not necessarily take pride in or get involved with their local community. 'An Englishman's home is his castle' could describe this group's outlook.

The projected growth of the borough is likely to result in an increased representation of people in the Happy Families and Urban Intelligence groups. A definition of Happy Families can be seen above. The definition of the Urban Intelligence group is:

**Urban Intelligence:** Urban Intelligence people are young, well educated and open to new ideas and influences. They are cosmopolitan in their tastes and liberal in their social attitudes. Few have children. Many are in further education while others are moving into full-time employment. Most do not feel ready to make permanent commitments, whether to partners, professions or to specific employers. As higher education has become internationalised, the Urban Intelligence group has acquired many foreign-born residents, which further encourages ethnic and cultural variety. These neighbourhoods typically occur in inner London and the inner areas of large provincial cities, especially those with popular universities. The growth in student numbers has led to their dispersal from halls of residence into older working class communities and the areas of large Victorian houses that typically surround the older universities.

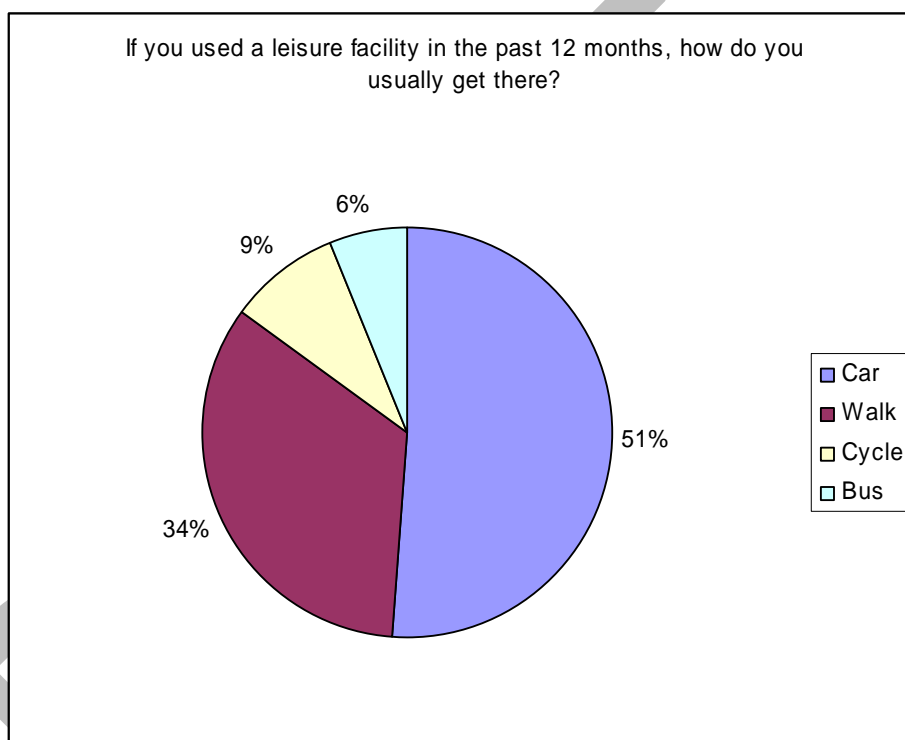
We have an aging population across the borough. This can clearly be seen on the graph below, which demonstrates that during the life of this strategy the borough will see an increase in the number of people aged sixty and over and a decrease in the number of people aged 15 to 49.



## Appendix 9: Accessibility

Accessibility for individual facilities has been split into catchment (travel time, public transport etc), opening hours, affordability and physical access (disability access etc).

Catchment: This provides a method of identifying areas that are not adequately served by existing sports facilities. They have been defined in this document as the distance travelled to access a facility. The CPA performance indicator for provision is the percentage of population that reside within 20 minutes travel time of a range of three different sports facility types. Kettering Borough has a higher than average number of car owners and the majority of users (51%) travel to sports facilities by car, followed by 34%, who walk, 9% who cycle and 6% who take the bus.



An aspiration for this document is to enable every person in the borough to be within a realistic distance of an indoor sports facility.

**Based on the conclusions and evidence presented in this document the standards set for provision are**

- **Everyone in the borough should be within a 20 minute (960m) walk of a local facility**
- **Everyone in the borough should be within a 20 minute (8km) drive of a borough wide or strategic facility**

Opening hours: Sports facilities on school sites are usually unavailable for community access during the school day.

Affordability: Typically, privately operated members only leisure facilities are perceived as being more expensive. Kettering Borough Council's Leisure Pass offers up to 50% off some of the leisure facilities in the borough.

Accessibility: Each facility was assessed for physical accessibility at the time of the facility audit.

## **Appendix 10: Transport**

The Borough has good transport links with the A14 trunk road providing an east-west link between the M1/M6 and A1, and the A6 running north-south between Bedford and Leicester. It's central position makes it extremely accessible for the majority of England providing quick and easy access from London, Cambridge, Birmingham, Peterborough, Nottingham, Leicester, Derby, Northampton and Milton Keynes. Kettering's railway station also provides rail access to central London in just under an hour with trains arriving from London and Nottingham every 30 minutes.

The road and rail network means that London Luton and Birmingham airports are only one hour away, Stanstead and Heathrow airports are less than two hours away, and Manchester and Gatwick Airports are within three hours. In addition to the proximity of a number of airports the advent of the Eurostar has made access to Europe easier than ever, meaning Brussels to Kettering takes less than 3 hours, and Paris to Kettering takes only three and a half hours.

Of particular significance from the 2001 census is that only 13.8% of the population of the borough do not have access to a car. This is lower than the regional average of 17% and England average of 19% and indicates that fewer visits to sports facilities will be made on foot.

## Appendix 11: Population Characteristics within Facility Catchment

### Population Characteristics within Facility Catchment

**Facility type:** Swimming Pool  
**Sub Facility:** All  
**Local Authority:** Kettering  
**Mode of Travel:** By Walk

Sport England assumes no responsibility for the completeness, accuracy and currency of the information contained on this map/report.  
 This information is taken from the Active Places Power website.

	Total Population	%
0 - 10 mins	12084	15.46
10.1 - 20 mins	20766	26.56
20.1 - 30 mins	21145	27.05
30.1 - 45 mins	21639	27.68
45.1 - 60 mins	2538	3.25
> 60	0	0
<b>Total</b>	<b>78172</b>	<b>100%</b>

	<b>0-14</b>		<b>15-24</b>		<b>25-39</b>		<b>40-59</b>		<b>60-79</b>		<b>80+</b>	
<b>Males</b>												
0 - 10 mins	1030	2.69%	649	1.7%	1554	4.06%	1463	3.82%	883	2.31%	231	0.6%
10.1 - 20 mins	2017	5.27%	1177	3.08%	2464	6.44%	2480	6.48%	1655	4.32%	326	0.85%
20.1 - 30 mins	2158	5.64%	1238	3.23%	2254	5.89%	2970	7.76%	1507	3.94%	278	0.73%
30.1 - 45 mins	2244	5.86%	1134	2.96%	2481	6.48%	3051	7.97%	1511	3.95%	277	0.72%
45.1 - 60 mins	246	0.64%	111	0.29%	252	0.66%	404	1.06%	203	0.53%	26	0.07%
<b>Females</b>												
0 - 10 mins	1066	2.67%	627	1.57%	1430	3.58%	1458	3.65%	1118	2.8%	575	1.44%
10.1 - 20 mins	1924	4.82%	1300	3.26%	2355	5.9%	2584	6.48%	1890	4.74%	594	1.49%
20.1 - 30 mins	2038	5.11%	1225	3.07%	2323	5.82%	2991	7.5%	1647	4.13%	516	1.29%
30.1 - 45 mins	2110	5.29%	1020	2.56%	2535	6.35%	3125	7.83%	1669	4.18%	482	1.21%
45.1 - 60 mins	219	0.55%	115	0.29%	272	0.68%	399	1%	200	0.5%	91	0.23%



## Population Characteristics within Facility Catchment

**Facility type:** Sports Hall

**Sub Facility:** All

**Local Authority:** Kettering

**Mode of Travel:** By Walk

	Total Population	%
0 - 10 mins	30852	38.51
10.1 - 20 mins	28053	35.02
20.1 - 30 mins	10159	12.68
30.1 - 45 mins	7929	9.9
45.1 - 60 mins	3123	3.9
> 60	0	0
<b>Total</b>	<b>80116</b>	<b>100.01%</b>

Sport England assumes no responsibility for the completeness, accuracy and currency of the information contained on this map/report.

This information is taken from the Active Places Power website.

	0-14		15-24		25-39		40-59		60-79		80+	
<b>Males</b>												
0 - 10 mins	3209	8.19%	1679	4.28%	3468	8.85%	3880	9.9%	2291	5.84%	411	1.05%
10.1 - 20 mins	2521	6.43%	1666	4.25%	3345	8.53%	3862	9.85%	1994	5.09%	449	1.15%
20.1 - 30 mins	1014	2.59%	521	1.33%	1170	2.98%	1353	3.45%	774	1.97%	151	0.39%
30.1 - 45 mins	810	2.07%	409	1.04%	883	2.25%	1091	2.78%	615	1.57%	127	0.32%
45.1 - 60 mins	326	0.83%	139	0.35%	298	0.76%	481	1.23%	243	0.62%	22	0.06%
<b>Females</b>												
0 - 10 mins	3130	7.65%	1762	4.31%	3525	8.62%	4061	9.93%	2630	6.43%	806	1.97%
10.1 - 20 mins	2448	5.98%	1573	3.84%	3129	7.65%	3836	9.38%	2279	5.57%	951	2.32%
20.1 - 30 mins	914	2.23%	544	1.33%	1157	2.83%	1394	3.41%	878	2.15%	289	0.71%
30.1 - 45 mins	735	1.8%	344	0.84%	949	2.32%	1101	2.69%	665	1.63%	200	0.49%
45.1 - 60 mins	320	0.78%	158	0.39%	349	0.85%	462	1.13%	258	0.63%	67	0.16%

## Population Characteristics within Facility Catchment

Facility type: Health & Fitness Suite

Sub Facility

Type: All

Local

Authority: Kettering

Mode of

Travel: By Walk

	Total Population	%
0 - 10 mins	30935	39.4
10.1 - 20 mins	27579	35.12
20.1 - 30 mins	12950	16.49
30.1 - 45 mins	4385	5.58
45.1 - 60 mins	2675	3.41
> 60	0	0
Total	78524	100%

Sport England assumes no responsibility for the completeness, accuracy and currency of the information contained on this map/report. This information is taken from the Active Places Power website.

	0-14		15-24		25-39		40-59		60-79		80+	
<b>Males</b>												
0 - 10 mins	2981	7.75%	1832	4.77%	3986	10.37%	3770	9.81%	2092	5.44%	490	1.27%
10.1 - 20 mins	2729	7.1%	1389	3.61%	2984	7.76%	3686	9.59%	2172	5.65%	429	1.12%
20.1 - 30 mins	1267	3.3%	716	1.86%	1380	3.59%	1902	4.95%	964	2.51%	130	0.34%
30.1 - 45 mins	470	1.22%	276	0.72%	407	1.06%	655	1.7%	346	0.9%	68	0.18%
45.1 - 60 mins	273	0.71%	128	0.33%	269	0.7%	418	1.09%	206	0.54%	27	0.07%
<b>Females</b>												
0 - 10 mins	2875	7.17%	1827	4.56%	3783	9.44%	3814	9.52%	2472	6.17%	1013	2.53%
10.1 - 20 mins	2661	6.64%	1500	3.74%	3023	7.54%	3836	9.57%	2430	6.06%	740	1.85%
20.1 - 30 mins	1239	3.09%	690	1.72%	1365	3.41%	1919	4.79%	1081	2.7%	297	0.74%
30.1 - 45 mins	359	0.9%	173	0.43%	472	1.18%	643	1.6%	361	0.9%	155	0.39%
45.1 - 60 mins	247	0.62%	128	0.32%	296	0.74%	404	1.01%	218	0.54%	61	0.15%

## Population Characteristics within Facility Catchment

Facility type: Synthetic Turf Pitch

Sub Facility Type: All

Local Authority: Kettering

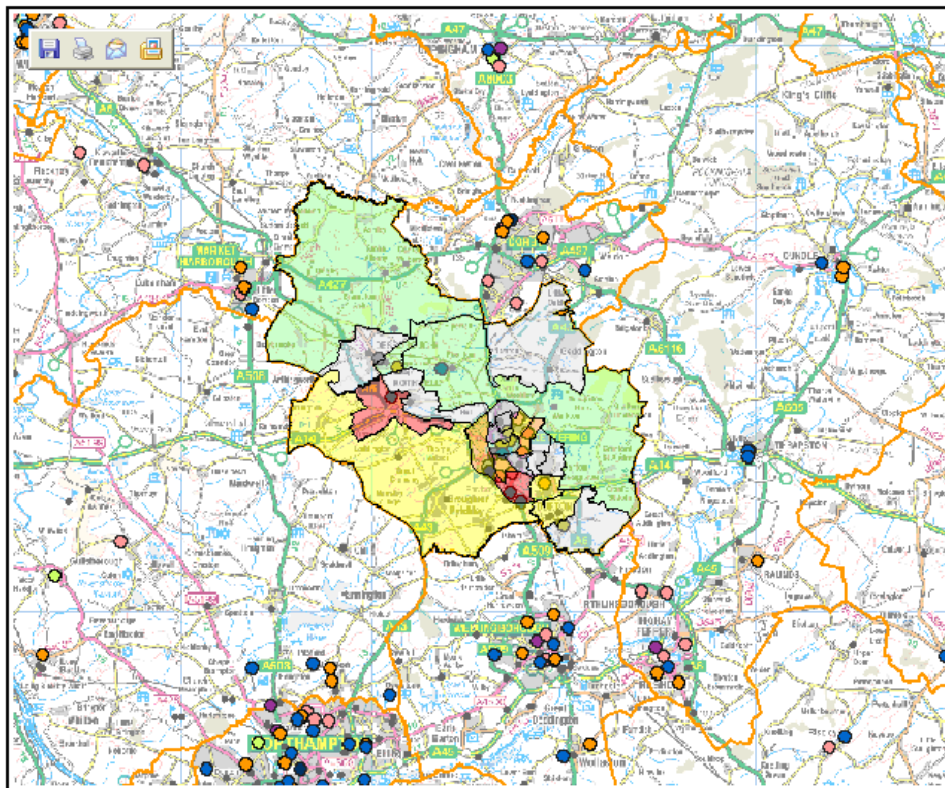
Mode of Travel: By Walk

	Total Population	%
0 - 10 mins	5662	7.84
10.1 - 20 mins	8834	12.23
20.1 - 30 mins	17477	24.19
30.1 - 45 mins	26523	36.71
45.1 - 60 mins	13753	19.04
> 60	0	0
Total	72249	100.01%

Sport England assumes no responsibility for the completeness, accuracy and currency of the information contained on this map/report. This information is taken from the Active Places Power website.

	0-14		15-24		25-39		40-59		60-79		80+	
<b>Males</b>												
0 - 10 mins	553	1.56%	297	0.84%	694	1.96%	711	2.01%	425	1.2%	81	0.23%
10.1 - 20 mins	789	2.23%	458	1.29%	930	2.63%	1095	3.09%	743	2.1%	183	0.52%
20.1 - 30 mins	1608	4.54%	984	2.78%	2143	6.05%	2247	6.35%	1330	3.76%	263	0.74%
30.1 - 45 mins	2789	7.88%	1637	4.62%	3107	8.78%	3512	9.92%	1759	4.97%	345	0.97%
45.1 - 60 mins	1347	3.81%	676	1.91%	1411	3.99%	2041	5.77%	1087	3.07%	154	0.44%
<b>Females</b>												
0 - 10 mins	550	1.49%	276	0.75%	666	1.81%	720	1.95%	511	1.39%	178	0.48%
10.1 - 20 mins	864	2.34%	481	1.31%	889	2.41%	1100	2.99%	869	2.36%	433	1.18%
20.1 - 30 mins	1475	4%	1062	2.88%	2005	5.44%	2281	6.19%	1568	4.26%	511	1.39%
30.1 - 45 mins	2543	6.9%	1532	4.16%	3135	8.51%	3556	9.65%	1949	5.29%	659	1.79%
45.1 - 60 mins	1313	3.56%	682	1.85%	1465	3.98%	2111	5.73%	1172	3.18%	294	0.8%

**Facilities in and around Kettering Borough**



Containing OS Basemapping © Crown Copyright. All Rights Reserved Sport England 100033111 2009 Scale: 1cm=3.09 KM

Sport England assumes no responsibility for the completeness, accuracy and currency of the information contained on this map/report. This information is taken from the Active Places Power ( www.activeplacespower.com ) website and its terms and conditions apply.

**Facility Finder/Find Nearest  
Advanced Queries**

**Thematic**

This thematic map is based upon the count of **All Facilities** of Opening/Ownership Group **All use, all ownership** in **Kettering District** using data ranges derived from **Kettering District**

Symbol	Range(Numbers)
Light Grey	0 - 2
Light Green	3 - 4
Yellow	5 - 6
Orange	7 - 8
Red	9 - 10

**Legends**

- SWIMMING POOLS
- HEALTH AND FITNESS
- SPORTS HALL
- SYNTHETIC TURF PITCHES
- ATHLETICS TRACKS
- INDOOR BOWLS
- INDOOR TENNIS CENTRE
- LOCAL AUTHORITY

**Appendix 12: Summary of responses from sports clubs and National Governing Bodies of Sport**

Sport	NGB response – identified facility needs in the borough	Club response – identified barriers to development (facility)
Outdoor bowls	No response	<p>Ise Bowling Club:</p> <p>Uses Grantown pavilion and bowls green for practice and matches. Believes that the greens are in good condition and always clean and tidy. The female changing room is too small and there is too much equipment stored in the male changing room. Other useful developments would include a drinks machine and a metal fence to replace the hedge (which has been burnt)</p>
		<p>Desborough Town Bowls Club:</p> <p>Uses Desborough Town Bowls Club for practice and matches. Have identified no additional facility requirements.</p>
		<p>Kettering Athletic Bowls Club:</p> <p>Currently play and compete on the borough council owned bowls greens on Rockingham Road Pleasure Park. They have identified a need for additional parking spaces.</p>

Sport	NGB response – identified facility needs in the borough	Club response – identified barriers to development (facility)
Squash	Referred to facility strategy that should be completed in September 2008 but have identified a need for a facility in the borough with county and regional catchment.	<p>Desborough Squash Club:</p> <p>Uses Desborough Leisure Centre for training and matches. Biggest barrier is the uncertainty around the future provision. 2 courts and existing changing facilities are adequate for growth. Glassback courts with viewing area would enable the facility to have regional significance as the nearest is Daventry.</p>
Baton Twirling	No recognised National Governing Body	<p>Chevrons (Burton Latimer):</p> <p>Currently use Isebrook School and Market Harborough Leisure Centre. Believe that Burton Latimer needs a sports hall as facilities in Kettering are too expensive. KLV unsuitable as they need to play music.</p>
Football	Have identified the refurbishment of Weekley Glebe pavilion, investment into the 3G synthetic pitch at Tresham Institute and investment into junior football in Desborough as priorities for Kettering Borough.	<p>Kettering Town Football Club and Kettering Town Football Club Supporters Trust:</p> <p>Currently play at a stadium on Rockingham Road in Kettering. Their lease expires in 2013 and there is a need to renew the lease or relocate. A new facility would need to meet the requirements of the National Ground Grading – Category A.</p>
		<p>Burton Country Club:</p> <p>Have identified the need for a youth football development centre. Would require drainage, improved training facilities and an all weather pitch.</p>

Sport	NGB response – identified facility needs in the borough	Club response – identified barriers to development (facility)
		<p>Desborough Town Football Club:</p> <p>Currently trains and plays at their ground on Braybrooke Road in Desborough. Has identified the poor overall condition of their facility but especially lack of car parking and poor changing accommodation. Would like an artificial pitch for club and community use. A new facility would need to meet the requirements of the United Counties League Premier Division. Club would rather not relocate.</p>
Gymnastics	<p>Have identified a need for improved facilities in Kettering that would serve the local requirements as well as satisfy the need for a new county facility.</p> <p>Have also identified a need for a permanent trampoline facility in the borough with borough wide catchment.</p>	<p>Kettering Olympic Gymnastics Club:</p> <p>Currently trains and competes at a 7500ft2 rented gymnastics facility off Northfield Avenue in Kettering. Have identified a lack of space to expand, despite having over 600 members they have a waiting list of over 100. They require a specifically built facility which would enable the club to expand into boys, disabled, adult etc and also attract regional competition.</p>
Tae Kwon-Do	No response	<p>Kettering GTUK:</p> <p>Finds it difficult to access sports halls with adequate storage. Would like a purpose built martial arts centre with the ability to divide it into smaller halls.</p>
Netball	No response	<p>Cambridge Challengers:</p> <p>Finds it difficult to access a sports hall as many are full when they are needed by the club.</p>

Sport	NGB response – identified facility needs in the borough	Club response – identified barriers to development (facility)
Athletics	Referred to their national facility strategy which highlights the county priorities of investment into small scale indoor and outdoor facilities. There are no specific priorities identified for the borough.	<p>Kettering Town Harriers:</p> <p>Currently trains and competes at the Athletics Track on Thurston Drive in Kettering. Have identified a need for improved viewing facilities, security, floodlighting, car parking, changing facilities and equipment.</p>
Tennis	No response	<p>Kettering Tennis Club:</p> <p>Currently trains at the Tennis Courts on Lake Avenue in Kettering. Have identified a need for improved car parking and additional tennis courts at current site.</p>
Indoor Bowls	No response	<p>Kettering Lodge Bowling Club:</p> <p>Currently trains and plays at Kettering Lodge Bowling Club on Northampton Road in Kettering. The club owns the facility. Have identified a need for improved parking and changing facilities. Believes that a new site would need a minimum of two outdoor greens and six indoor rinks. Have identified a general lack of space at their existing site, which prevents development.</p>
Hockey	No response	<p>Kettering Hockey Club:</p> <p>Currently trains and plays at the Astro turf pitch on Lake Avenue. Have identified inadequate lighting and hockey goals, a lack of security and poor cleaning.</p>



Sport	NGB response – identified facility needs in the borough	Club response – identified barriers to development (facility)
Cricket	No priorities identified	<p data-bbox="1171 412 1927 526">Kettering Cricket Club: Currently plays and trains at Kettering Cricket Club on Lake Avenue. The club owns the facility. Have identified a need for improved practice nets and improved wickets.</p> <p data-bbox="1171 623 1906 769">Burton Latimer Cricket Club: Currently train and compete at Burton Latimer Cricket Club. Have identified a need for a new pitch and changing facilities to promote cricket to young people.</p> <p data-bbox="1171 834 1906 948">Desborough Town Cricket Club: Currently train and play at West Lodge Park in Desborough. Didn't raise any issues around their facility.</p>
Rugby	Have recognised that Kettering Rugby Club needs a facility that meets the RFU model venue 3 as they are currently unable to cater for all ages, sexes and disability levels. This would provide a county focus for player development, coach education and central venue competitions, and a regional site for player development and coach education.	<p data-bbox="1171 1013 1927 1240">Kettering Rugby Club: Current plays and trains at Kettering Rugby Club on Waverley Road in Kettering. The club has 51 years remaining on a 100 year lease from Kettering Borough Council. The club has identified a need for bigger and better changing facilities and toilets, upgraded social facilities, more pitches, an all weather training facility and an indoor training facility.</p>

Sport	NGB response – identified facility needs in the borough	Club response – identified barriers to development (facility)
Volleyball	Has identified Kettering Conference Centre as a possible site for their National Volleyball Centre	No club locally
Judo	No response	<p>Kettering Judo Club:</p> <p>Currently trains and competes at the William Knibb Centre in Kettering. They have identified a requirement for a permanent dojo the size of a basketball court.</p>
Swimming	No response	<p>Kettering Swimming Club:</p> <p>Currently swim at the borough council owned swimming pool in Kettering as well as pools in Thrapston, Oundle and Wellingborough. They have identified a need for additional pool space in Kettering with adequate spectator space and appropriate ventilation.</p> <p>Rothwell Amateur Swimming Club:</p> <p>Currently swims at the pool at Montsaye Community College in Rothwell. Have identified a need for a more shallow learner pool in Rothwell.</p>
Boxing	No response	<p>Kettering School of Boxing:</p> <p>Currently trains and competes at the borough council owned facility on Northampton Road in Kettering. Have identified a need for longer security on upgraded facilities that are suitable for a club ranked in the top six nationally.</p>

Sport	NGB response – identified facility needs in the borough	Club response – identified barriers to development (facility)
Golf	Have not identified any specific requirements in the borough but recognise that the main issue with golf clubs tends to be a lack of practice facilities.	Kettering Golf Club:  Currently play on tenanted land in Kettering. Have identified a need for more certainty around their future use of the course.
Cycling	Have identified the need for cycle sport facilities in Kettering. They recognise that Kettering ideally placed for a regional cycling centre and also recognise that the region is poorly served and “desperately in need” of a road racing circuit, velodrome and a BMX track of regional standard. Their facilities strategy is currently being written as part of their whole sport plan for 2009/2013.	Kettering Cycling Club:  Currently homeless. Believes that there is a lack of cycling facilities in the borough. Over 150 different children have tried their cycling skills sessions on football fields and basketball courts. The club has identified a need for a closed road cycling circuit, velodrome or floodlit Mountain bike circuit, with changing facilities so they can develop these children further.
American Football	Have not identified any needs in the borough.	No club locally
Kendo	Have not identified any needs in the borough.	No club locally
Archery	Have identified a need for a facility in the East Midlands with National significance. Believes that the borough could be the location for this.	Targetcraft Archers:  Currently practice and play at Montsaye Sports Hall in Rothwell (inside) and West Lodge Rural Centre in Desborough (outside). Have identified lack of archery specific space, storage, meeting rooms, backstop netting (inside) and toilets.

## Appendix 13: Outcomes of the research

Kettering Borough Council's Leisure facilities:

Kettering Borough Council conducted an options appraisal and went out to the market on the management of its leisure facilities in 2006 where it concluded that the most effective method of management was to contract out the management of the Kettering Swimming Pool, Corn Market Hall, synthetic pitch, athletics track and Desborough Leisure Centre to the private leisure provider, Parkwood Leisure. It also concluded that the management of its sports pavilions were most effective and efficient if they remained with Kettering Borough Council.

All of Kettering Borough Council's leisure facilities offer a 50% discount to holders of the Kettering Leisure Pass. The leisure pass was reviewed as a result of the first Active People survey and was relaunched to focus on the low participatory groups in order to encourage greater participation.

Usage figures have increased since the first Active People survey and it is believed that the appropriate management and offer at Kettering Borough Council's facilities is key to participation rates.

Other facilities in the borough:

The Kettering Conference Centre has one of only twenty 12 court sports halls in England. In addition to having a 12 court sports hall, the Kettering Conference Centre also has a fully equipped theatre, squash courts, aerobics studios, fitness centre, excellent conference facilities, bars and will shortly be home to a brand new 120 room hotel. Understandably, the Kettering Conference Centre has been selected as one of the 150 pre-games training camps for the 2012 Olympic and Paralympic Games.

Situated beside the Kettering Conference Centre is an eight lane athletics track, full size astroturf pitch and sports pavilion. Within a five minute walk is Kettering Town Cricket and Sports Club, home to cricket, hockey, rifles, archery and tennis and a pavilion. Next door there are 4 hard surfaced tennis courts, 2 outdoor bowls greens, a boxing club, a football pitch and an associated pavilion.

The borough council owned leisure facilities of the Kettering Swimming Pool, the Corn Market Hall, the athletics facility, the astroturf pitch referred to above and the Desborough Leisure Centre are all operated by Parkwood Leisure. Parkwood Leisure is one of the most successful leisure management companies in the UK. They employ over 4000 people across 70 facilities in England and Wales and are proud of their reputation for high quality management and customer-focused service provision. They have a strong track record in increasing the usage of the facilities they manage, through financial investment and a flexible approach to community needs and have the contract to run the facilities in the borough listed above until March 31<sup>st</sup> 2017, with a potential increase of an additional five years. The only indoor sports facility in the borough of Kettering that has achieved Quest status is the Kettering Swimming Pool, which achieved a score of 70% in November 2008.

Facility audit:

A comprehensive audit of provision in the Borough was conducted by Kettering Borough Council officers alongside relevant facility managers during November and December 2008. It provides a snapshot of the situation at that time and was based on a proforma to standardise data collection and ensure sites were considered on a like for like basis on their ability to contribute to an increase in participation. The audit looked at quantity, quality and distribution of facilities and helped to:

- Assess accessibility (catchment, opening hours, affordability, physical access)
- Assess public transport requirements
- Assess the quantity of provision
- Assess the quality of provision
- Assess the levels and types of provision
- Identify specific facility requirements
- Identify ownership and management details
- Identify shortfalls in provision
- Establish a priority list for future investment

A copy of the audit form can be seen below.

Facilities were also graded as strategic facilities, borough wide facilities or local facilities dependant on their catchment and composition. This will help us identify the level of developers' contributions which would be appropriate for each facility and whether the developments outside of the borough will have an impact on facilities in the borough.

DRAFT

“If we want to increase participation in sport at this site, is it currently in an adequate condition?\*

*\*Realistic potential of the site to get more people, more active, more often*

1. No provision at facility and needs investment if participation is to be sustained
2. Inadequate<sup>1</sup> at Current levels of provision and needs investment if participation is to be sustained
3. Adequate<sup>2</sup> at current levels of provision but will need investment if participation is to be increased
4. Adequate<sup>2</sup> at current levels of provision and adequate if participation is increased

Date of /visit ..... Audit completed by .....

Position .....

## SITE DETAILS

Facility Name	
Address	
Post code	
Grid Reference	

Owner	
Management	
Contact details	

**SUMMARY OF FACILITIES ON SITE**

	No.		No.
Wet change		Pavilions	
Dry change		Youth Area	
Swimming pools		Jacuzzi	
Sports halls		Dance Studio	
Multi use halls		Meeting Rooms	
Health & Fitness/Gym		Café	
Squash courts		Crèche	
Bar area			
Kitchen area		Other (please state)	

<u>Car Parking</u>	1	2	3	4	Comments
<b>Number of car parking spaces</b>					
<b>Number of disability car parking spaces</b>					
<b>Number of Bike Racks</b>					
<b>Transport links within 1 mile of the site</b>					
<b>Condition of car park surface</b>					
<i>Free from pot holes</i>					
<b>Lighting</b>					
<i>Car Park area is well lit</i>					
<b>CCTV of Car Park</b>					
<i>Offers a 360 rotation and covers all blind spots</i>					
<u>Equality Provision</u>	1	2	3	4	Comments
<b>Disability Access (Ramps, Drop Kerbs)</b>					
<i>Drop Kerbs must be near main entrance</i>					
<b>Disabled Toilet and Shower</b>					
<i>Plus emergency pull cords and wall</i>					



<i>supports</i>					
<b>Lowered Reception</b>  <i>Someone sitting down must be able to access reception work surface</i>					
<b>Pathways &amp; Access</b>  <i>Pathways must be even and flat</i>					
<b>Electric Doors</b>  <i>Doors must meet DDA regulations</i>					
<b>Access to all floors</b>  <i>A person with limited ability must have access to all floors unaided</i>					
<b>Segregated Changing Rooms &amp; Showers</b>  <i>Separate changing facility and showers for male, female and junior participants</i>					
<b>Baby Changing facility</b>  <i>Baby changing facility that can be accessed by all users</i>					
<b><u>Condition of Facility</u></b>	1	2	3	4	Comments
* Management must be consulted on the condition of the building to gain accurate results					
* Where appropriate, Safety records, record of service and testing must be consulted					

<b>External Walls</b>					
<i>Free from cracks – Problems identified by management</i>					
<b>Internal Walls</b>					
<i>Free from cracks – Problems identified by management</i>					
<b>External Lighting on building</b>					
<i>Security lighting that works from dusk</i>					
<b>Emergency Lighting</b>					
<i>Works when power cut – Record of testing</i>					
<b>Internal Lighting</b>					
<i>Well lit and suitable for sport sessions</i>					
<b>Flooring</b>					
<i>Well maintained and easy to clean surface. Free from trips and rips</i>					
<b>Windows</b>					
<i>UPVC double glazed, singular windows</i>					
<b>Roofing</b>					
<i>Clear from debris, standing water and leaks</i>					
<b>External Doors</b>					
<i>Doors close securely and are free from draughts</i>					

<b>Internal Doors</b>					
<i>Rooms have fire doors where appropriate and all doors free from draughts and close securely</i>					
<b>Changing rooms</b>					
<i>Easy to clean</i>					
<b>Toilets</b>					
<i>Offer at least 1 male, 1 female and 1 disabled toilet.</i>					
<b>Ceilings</b>					
<i>No plaster damage, free from water damage</i>					
<b>Heating</b>					
<i>Economically friendly and fully functioning</i>					
<i>All heaters must be wall mounted</i>					
<b>Running Water</b>					
<i>All showers have free running water and all stop plunges work. Non dripping taps</i>					
<b>Electricity</b>					
<i>All rooms to have electrical points where appropriate</i>					
<b>Storage</b>					
<i>Meets the needs of facility</i>					

<b>Plant</b> <i>Well maintained and record of service</i>					
<b>CCTV around building</b> <i>Offers a 360 rotation and covers all blind spots</i>					
<b>Intruder Alarms</b> <i>Fully functioning</i>					
<b>Fire Alarms</b> <i>Fully functioning and record of testing</i>					
<b>Boilers</b> <i>Well maintained – Regular service</i>					
<b>Kitchen Area</b> <i>Meets the needs of all users</i>					

DRAFT

Other Comments
----------------

Future potential of the facility

Mangers Comments

DRAFT

Name of interviewee \_\_\_\_\_

Position of interviewee \_\_\_\_\_

Name of facility	Grade of facility	Type of facility	Management type	Key points from the audit
Kettering Olympic Gymnastics Club	Strategic	Other	Community Organisation	Facility is too small meaning the club is at capacity (600) with a waiting list (180). Changing rooms are required at existing site but club ultimately needs a large purpose built facility to increase participation.
Kettering Athletics Track	Strategic	Borough Council owned leisure centre	Local Authority (contract)	Floodlights and CCTV in need of investment.
Kettering Conference Centre	Strategic	Private fitness facility	Commercial	Floor of sports hall needs investment. Some facilities shared with Balance.
Northampton Road pavilion	Borough	Borough Council owned sports pavilion	Local Authority (in house)	Windows and car park in need of investment.
Weekley Glebe pavilion	Borough	Borough Council owned sports pavilion	Local Authority (in house)	In need of major investment into changing facilities to maintain participation. Toilets, windows and doors also in need of investment.
Kettering Rugby Club	Borough	Other	Community Organisation	Investment needed to improve access for people with disabilities. Invested required into changing rooms, toilets, roof and windows. Ultimately require a RFU Type 3 facility to develop.
Kettering Swimming Pool	Borough	Borough Council owned leisure centre	Local Authority (contract)	Swimming pool not large enough to meet the needs of the borough. Café might increase participation.
Sir John Lowther Centre	Borough	Community Centre	Community Organisation	No transport links within one mile. Investment needed into car park lighting and CCTV. Cycle path and football pavilion need completion.
LA Fitness	Borough	Private fitness facility	Commercial	Lowered reception would improve access. Larger car park would be useful.
Kettering Park Hotel	Borough	Private fitness facility	Commercial	Lowered reception and electric doors would improve access for people with disabilities.
Ladies First	Borough	Private fitness facility	Commercial	Electric doors and a lift would improve access for people with disabilities.

<b>Name of facility</b>	<b>Grade of facility</b>	<b>Type of facility</b>	<b>Management type</b>	<b>Key points from the audit</b>
Gladiators Gym	Borough	Private fitness facility	Commercial	First floor so very limited access for people with disabilities. Windows, doors and changing facilities need investment.
Bodyshapers	Borough	Private fitness facility	Commercial	First floor so very limited access for people with disabilities.
Balance Fitness Centre	Borough	Private fitness facility	Commercial	Many facilities shared with Kettering Conference Centre.
Kettering Synthetic Pitch	Borough	Borough Council owned leisure centre	Local Authority (contract)	Floodlights and CCTV in need of investment.
Montsaye Community College	Borough	Dual use	School/FE/HE (in house)	Potential to develop tennis courts and café.
Corn Market Hall	Local	Borough Council owned leisure centre	Local Authority (contract)	Changing rooms and suitable equipment might encourage participation.
Melton Community Centre	Local	Community Centre	Local Authority (in house)	Changing rooms might encourage participation.
The Crescents Community Centre	Local	Community Centre	Community Organisation	Facility almost at capacity. CCTV in need of investment.
Rothwell Community Centre	Local	Community Centre	Local Authority (in house)	Facility in need of major refurbishment to maintain participation.
Burton Latimer Community Centre	Local	Community Centre	Community Organisation	Investment needed into changing facilities, floor, toilets and storage.
The William Knibb Centre	Local	Community Centre	Northamptonshire County Council	Investment needed into changing rooms, access for people with disabilities, windows, sports hall flooring and lighting, heating and storage.
Barton Seagrave Community Centre	Local	Community Centre	Community Organisation	Investment into new floor required.
Ise Valley pavilion	Local	Borough Council owned sports pavilion	Local Authority (in house)	Investment needed into external walls, changing rooms and CCTV.
Rockingham Road pavilion	Local	Borough Council owned sports pavilion	Local Authority (in house)	Limited access for people with disabilities. Facility nearing capacity.
North Park pavilion	Local	Borough Council owned sports pavilion	Local Authority (in house)	Main hall too small for a lot of activities. Investment needed into CCTV.

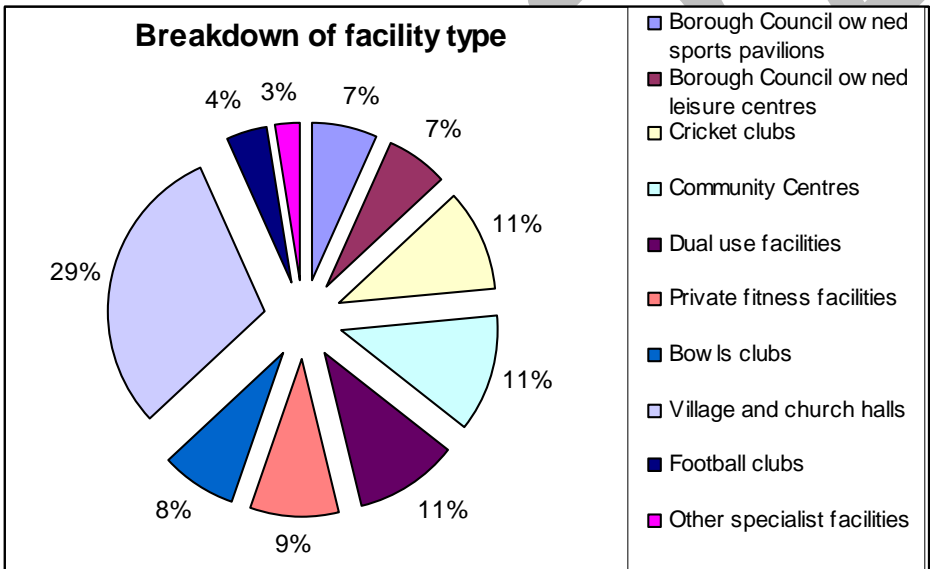
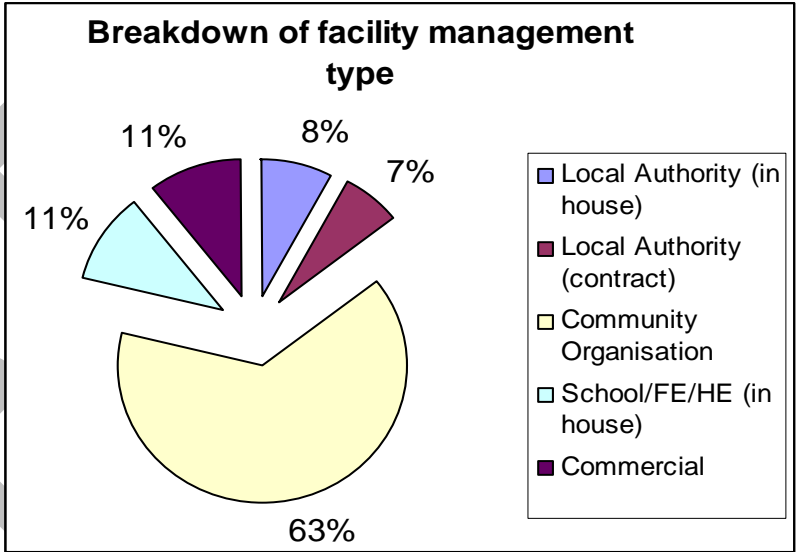
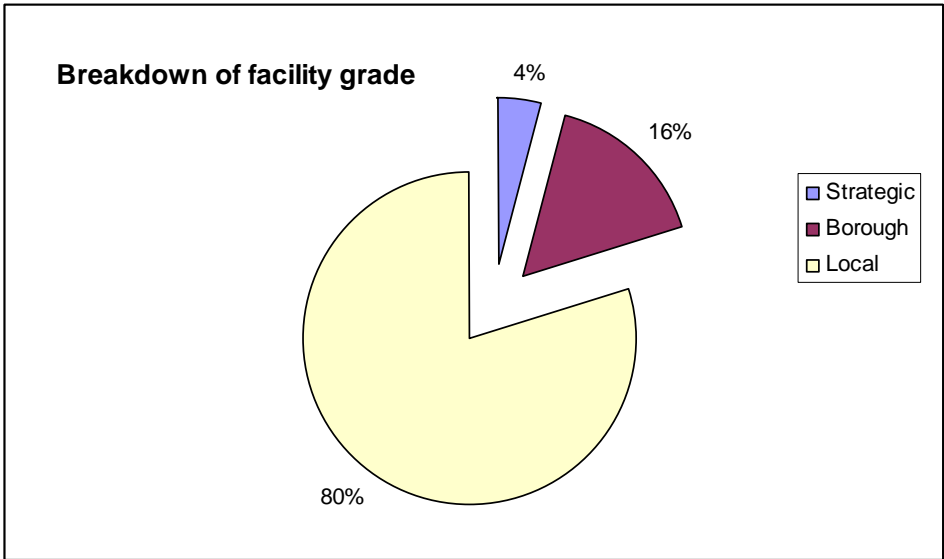
<b>Name of facility</b>	<b>Grade of facility</b>	<b>Type of facility</b>	<b>Management type</b>	<b>Key points from the audit</b>
Counties Community Centre	Local	Community Centre		
Southfield School	Local	Dual use	School/FE/HE (in house)	Sports hall needs changing rooms, toilets and showers to improve community access.
Montagu School	Local	Dual use	School/FE/HE (in house)	Electric doors and lowered reception would improve access. Mirrors could be installed in the dance hall.
Bishops Stopford School	Local	Dual use	School/FE/HE (in house)	Heating and storage could be improved.
The Space	Local	Dual use	School/FE/HE (in house)	A larger hall would enable more sports to be offered. Limited opportunities for community access.
Ise Community College	Local	Dual use	School/FE/HE (in house)	Disability access could be improved. Heating, ceiling, lighting and windows need investment. Sports hall smaller than four court.
Latimer Arts College	Local	Dual use	School/FE/HE (in house)	Sports hall smaller than four court and too low. Storage, windows and disability access could be improved.
Tresham College	Local	Dual use	School/FE/HE (in house)	
Bonnors Health Club	Local	Private fitness facility	Commercial	Access for people with disabilities could be improved. Changing rooms, roof, internal doors and ceilings need investment.
Burton Latimer Country Club	Local	Private leisure facility	Commercial	Investment needed into access for people with disabilities, windows, heating and changing facilities. Potential to provide more for Burton Latimer.
Rothwell Football Club	Local	Football club	Community Organisation	
Desborough Town Football Club	Local	Football club	Community Organisation	Changing rooms require modernisation, clubroom needs to be rebuilt since the fire.
Ise Lodge Football Club	Local	Football club	Community Organisation	Investment would be needed into community hall to enable greater sports use. Improved flooring.



<b>Name of facility</b>	<b>Grade of facility</b>	<b>Type of facility</b>	<b>Management type</b>	<b>Key points from the audit</b>
Burton Latimer Cricket Club	Local	Cricket club	Community Organisation	Meets the existing needs of the cricket club but would need investment to develop further.
Loddington & Mawsley Cricket Club	Local	Cricket club	Community Organisation	Meets the existing needs of the cricket club but would need investment to develop further.
Geddington Cricket Club	Local	Cricket club	Community Organisation	Investment needed into flooring, windows, heating, changing rooms, storage and heating.
Barton Seagrave Cricket Club	Local	Cricket club	Community Organisation	Investment needed into windows, heating, toilets and roof.
Weekley & Warkton Cricket Club	Local	Cricket club	Community Organisation	Changing rooms, toilets and kitchen need investment.
Pytchley Cricket Club	Local	Cricket club	Community Organisation	Investment needed into the entire facility. Particularly the changing facilities, servicing, windows, doors, and heating.
Rushton Cricket Club	Local	Cricket club	Community Organisation	Investment needed into changing facilities and access for people with disabilities.
Kettering Town Cricket Club	Local	Cricket club	Community Organisation	Meets the existing needs of the cricket club but would need investment to develop further.
Kettering Lodge Indoor Bowls Club	Local	Bowls club	Community Organisation	Investment needed to improve access for people with disabilities. An additional 2 rinks would increase participation.
Desborough Town Bowls Club	Local	Bowls club	Community Organisation	Improved storage, improved facilities for people with disabilities and improved kitchen facilities might increase usage.
Rothwell Manor Park Bowls Club	Local	Bowls club	Community Organisation	No car parking. Investment required into windows, walls, ceiling and facilities for people with disabilities is required.
Desborough Indoor Bowls Club	Local	Bowls club	Community Organisation	
Rothwell Bowls Club	Local	Bowls club	Community Organisation	
Burton Latimer Bowls Club	Local	Bowls club	Community Organisation	Increased storage is required. Changing rooms with showers might encourage participation.

<b>Name of facility</b>	<b>Grade of facility</b>	<b>Type of facility</b>	<b>Management type</b>	<b>Key points from the audit</b>
Ashley Village Hall	Local	Village/church hall	Community Organisation	Changing rooms might encourage participation.
Braybrooke Village Hall	Local	Village/church hall	Community Organisation	Changing rooms might encourage participation.
Broughton Village Hall	Local	Village/church hall	Community Organisation	Car parking spaces for people with disabilities and electric doors would improve access. Changing rooms might encourage participation.
Cranford Village Hall	Local	Village/church hall	Community Organisation	No car parking. Windows and doors in kitchen and floor in hall in need of investment. Changing rooms might encourage participation.
Cransley Village Hall	Local	Village/church hall	Community Organisation	Heating and car park in need of investment. Changing rooms might encourage participation.
Dingley Village Hall	Local	Village/church hall	Community Organisation	No toilet for people with disabilities. Investment needed in the roof. Changing rooms might encourage participation.
Geddington Village Hall	Local	Village/church hall	Community Organisation	Investment needed in upgraded changing facilities and heating
Grafton Underwood Village Hall	Local	Village/church hall	Community Organisation	No transport links within one mile. Insufficient storage. Changing rooms might encourage participation.
Harrington Village Hall	Local	Village/church hall	Community Organisation	No transport links within one mile. External doors require attention. Changing rooms might encourage participation.
Loddington Village Hall	Local	Village/church hall	Community Organisation	Changing rooms might encourage participation.
The Centre at Mawsley	Local	Community Centre	Community Organisation	Upgrade of main hall lighting and storage required.
Pytchley Village Hall	Local	Village/church hall	Community Organisation	Changing rooms might encourage participation.
Rushton Village Hall	Local	Village/church hall	Community Organisation	Heating and windows in need of investment.

Name of facility	Grade of facility	Type of facility	Management type	Key points from the audit
				No toilet for people with disabilities. Changing rooms might encourage participation.
Stoke Albany Village Hall	Local	Village/church hall	Community Organisation	Roof, external walls and windows in need of investment. Changing rooms might encourage participation.
Thorpe Malsor Village Hall	Local	Village/church hall	Community Organisation	Investment into kitchen required. Changing rooms might encourage participation.
Warkton Village Hall	Local	Village/church hall	Community Organisation	No transport links within one mile. Roofing, walls, doors, floor and toilets need attention. Changing rooms might encourage participation.
Wilbarston Village Hall	Local	Village/church hall	Community Organisation	Investment needed into storage, changing facilities and disabled toilet
Carey Church, Bath Road	Local	Village/church hall	Community Organisation	
St Andrew's Church Hall, Kettering	Local	Village/church hall	Community Organisation	
St John's Church Hall, Kettering	Local	Village/church hall	Community Organisation	



Common issues from the facility audit:

Type of facility	Common issues	Specific issues
Borough Council owned sports pavilions	Affordable provision All facilities offer leisure pass discounts Good levels of DDA access	Weekley Glebe pavilion is in need of major refurbishment Security is an issue at some
Borough Council owned leisure centres	Provide good quality Affordable provision All facilities offer leisure pass discounts	Potential to offer more sports at the pitch and track Desborough Leisure Centre is reaching the end of its life Kettering Swimming Pool requires some modernisation
Cricket clubs	All managed by cricket clubs	Security is an issue at some facilities Storage is an issue, particularly at Geddington Changing facilities are variable but are particularly in need of investment at Rushton Pytchley Cricket Club in need of investment into pavilion DDA access varies
Community Centres	Lack sports specific facilities	Changing facilities vary Storage varies Security is an issue at some facilities Rothwell Community Centre is in need of investment Burton Country Club has the most untapped potential DDA access varies
Dual use facilities	All of the dual use facilities are used by schools during the day. Security is an issue. Lack of baby changing facilities	Costs can be prohibitive. Availability is mixed. DDA access varies Some dated in inadequately sized sports halls

Type of facility	Common issues	Specific issues
Private fitness facilities	Most provide good quality Some have excellent membership levels	DDA access is poor at some facilities Affordability could be a barrier at some facilities Only two facilities offer leisure pass discounts
Bowls clubs	Generally fit for purpose but could offer alternative activities	DDA access varies but is poor at some facilities
Village and church halls	Generally fit for purpose but in need of investment to increase participation Affordable Lack sports specific facilities	Improved changing facilities needed at Broughton, Wilbarston and Geddington Improved storage needed at Mawsley, Broughton and Wilbarston Improved heating needed at Geddington Improved lighting needed in the main hall at Mawsley DDA access varies Changing facilities vary
Football clubs	Generally dated facilities Potential for other sports	DDA access varies Some security issues More use could be made of Ise Community Centre for football Desborough Town Football Club in need of refurbishment
Other specialist facilities	Operated by sports clubs	Kettering Rugby Club is in need of investment into changing facilities and DDA access in the short term and a RFU type 3 facility in the longer term Kettering Olympic Gymnastics Club is in need of a permanent site with improved facilities in order to develop

Key conclusions from community questionnaire were:

- The most important facilities for both over 16s and under 16s are indoor pools, fitness centres and sport/leisure centres
- Main reasons for non participation were – lack of time (U16s, females and males), not fit enough (60+). The main reasons among people with a disability were cost, lack of fitness and poor quality facilities
- Main reasons for participation were improve health/keep fit (U16s and 16+) and for fun (U16s and 16+), and for social reasons (16+) and to relax (16+)
- People are willing to pay for additional facilities at leisure centres – café (both groups), fitness classes (U16s)
- Average travel time to facilities is currently 13.6 mins (U16s) and 16.6 mins (16+)
- Under 16s would rather use a large leisure centre, over 16s don't mind. More under 16s than over 16s would rather use a facility at a school site
- People would like to see their village hall used more for sport and recreation

Key conclusions from the Sports Facility Planning Model:

The Sports Facility Planning Modelling Profile of Sports Halls in the Borough shows that there is insufficient justification for development of another four court sports hall elsewhere in the Borough until the population increases. It specifically demonstrates that as of 2008:

- the overall level of provision of courts per 10,000 people is similar to national and regional levels
- there is an overall demand for 25 courts and a provision of 33 (although it notes that for realistic/comfortable provision the supply needs to be greater than the demand)
- 90.7% of those whose demand was satisfied travelled by road whereas 9.3% walked. This is a lower level than the regional rate of 14% and national rate of 16% and reflects the borough's higher proportion of residents who have access to a car
- Approximately 6.5% of demand in the borough is not currently being met, this is due to users choosing not to make a visit because of distance. This is the equivalent of a 1 court sports hall.
- About 72% of sports hall capacity in the Borough is currently being used compared to 68% across the region and 67% for England. This is a reasonable level as use at 80% of capacity is viewed as busy.
- The borough has a higher level of provision per person compared to both the regional and national figures.

The Sports Facility Planning Modelling profile of swimming pools in the Borough demonstrates that there is sufficient justification for more water space at current levels of population. It specifically demonstrates that as of 2008:

- The borough has considerably less water space per 1000 than the regional and national average with just over half the national average
- At a population of 82777 the borough has 7.2m<sup>2</sup>/1000. The regional and national average is 13m<sup>2</sup>/1000
- The overall supply of pool area is insufficient in the borough when the comfort factor is taken into account
- The borough's unmet demand is quite high, at 13%
- Many residents are travelling outside the district to swim. The net balance shows a 29% net export

- The capacity of supply used is 68.7% compared to a regional average of 54.7% and a national average of 57.6%. 70% is regarded by Sport England as very busy since it is impractical for pools to be completely full throughout the peak period.
- All of the pools are modern or have been recently refurbished and are likely to be very well used. Therefore there is a need for additional capacity in the borough.
- The borough has a poor level of provision when compared with the regional and national average. The area of greatest demand in the northern part of Kettering town, although it is expected that this will be met in part by the new 50m swimming pool in Corby.

Based on a population of 82777 people the Sport England Sports Facility Calculator says that the borough should have 838m<sup>2</sup> of waterspace. This indicates that our current deficit is 242m<sup>2</sup>

The tables below demonstrate the year on year shortfall in waterspace in relation to the draft housing projections for the borough. The costs are sourced from the Sport England Sports Facility Calculator which uses the latest Sport England cost estimates.

	Current deficit	2009 / 10	2010 / 11	2011 / 12	2012 / 13	2013 / 14	2014 / 15	2015 / 16
<b>New houses</b>	-	426	570	837	1028	1003	1063	1014
<b>New population (2.4/house)</b>	-	1022	1368	2009	2467	2407	2551	2434
<b>Waterspace required (m<sup>2</sup>)</b>	242	10.47	14.20	20.58	25.27	24.65	26.13	24.93
<b>Cumulative waterspace</b>	242	252.47	266.67	287.25	312.52	337.17	363.30	388.23
<b>Lanes required</b>	4.56	0.20	0.27	0.39	0.48	0.46	0.49	0.47
<b>Cumulative lanes</b>	4.56	4.76	5.03	5.42	5.90	6.36	6.85	7.32
<b>Cost</b>	£2,392,220	£103,477	£140,332	£203,410	£249,782	£243,707	£258,287	£246,441

With the expected population growth as outlined above the demand for these facilities will only increase. It is expected that the level of demand for swimming will increase as a result of the free swimming initiative running between April 2009 and March 2011

Burton Latimer Town Council distributed a questionnaire around all of the residents of Burton Latimer. The questionnaire was also circulated around Barton Seagrave, Finedon and Cranford. Key findings include:

- 80% of respondents said that they would use an indoor sport and leisure facility in Burton Latimer
- 52% of respondents use an indoor sports facility at the moment
- The main reason given for those who do not use an indoor sports facility was “no facilities nearby (29%) followed by any other reason (16%) and not enough time (13%)
- 31% of respondents belong to a sports club, compared to a National average of 25.3% and a Kettering Borough average of 22.6% according to the first Active People survey
- 83% of respondents would use a small leisure pool in Burton Latimer



- 53% of respondents participate in 30 minutes of moderate exercise a week, compared to a Kettering Borough average of 22.6%, according to the second Active People survey
- 69% of respondents drive to a sports facility, followed by 20% who walk and 6% who take the bus
- 87% of respondents would rather go to a facility in Burton Latimer than travel to their present one

DRAFT

## Appendix 14: Parish plans and village design statements

Some of the parish councils in the borough have written parish plans and village design statements. Sports facilities have been recognised in the following:

Document	Sports facilities
Ashley Village Design Statement 2008	No specific mention of indoor sports facilities but states that, "future development should provide adequate off road parking" and "new buildings should blend with their surroundings"
Weston by Welland Village Design Statement	No specific mention of indoor sports facilities but states that, "it is important that all development within the village include off road parking" and no new-build development should be permitted outside the village boundary" and "all new developments should be sympathetic to the existing heritage and character of the village."
Harrington and Thorpe Underwood Village Design Statement 2008	No specific mention of indoor sports facilities but states that, "any new buildings should include adequate off road parking areas" and "no new-build development should be permitted outside the Harrington Village boundary other than for the conversion or re-use of existing buildings."
Pytchley Parish Plan 2003	No specific mention of indoor sports facilities but 83% of adult respondents rate the village hall as important or very important, although only 25% use the facility regularly. The need for improved storage, toilets and disabled toilets was identified.
Geddington, Newton & Little Oakley Village Plan 2003	The important contribution that the village hall makes to indoor sport is recognised. No specific mention of indoor sports facilities is made but comments are provided on "the underuse of the Youth Club building and its lack of facilities for teenagers."
Braybrooke Village Design Statement 2005	No specific mention of indoor sports facilities but states that, "the lack of facilities and transport is seen as the major drawback to village life" and "planning permission for new buildings will be permitted only where the siting, layout, design and materials used preserve or enhance the character or appearance of the area."

## Appendix 15: Options:

There are four options for addressing identified needs. These range from simply upgrading the existing facility provision to the provision of a new facility. Kettering Borough Council has considered each option when addressing the identified shortfalls in the action plan (table 1) and will carry out an appraisal of the policy options when considering any future facility needs. Further details of the options can be found below:

Policy options		
Policy ref.	Option	Comment
1	Upgraded facility provision	Upgraded existing provision would meet some of the qualitative needs identified at a lower cost than new facility provision.
2	Enhanced access to existing facilities	In some instances enhanced access would increase participation. For example: <ul style="list-style-type: none"> <li>• At dual use sites</li> <li>• At sites with limited opening hours</li> <li>• At private facilities</li> </ul>
3	Integrated facility provision	In some instances integrated access would increase participation. For example: <ul style="list-style-type: none"> <li>• Operation of facilities (ie – a sports hall could have lines marked for multiple activities)</li> <li>• Design of village and community halls that enable sports use</li> <li>• The development of existing facilities in multi activity sport hubs</li> </ul>
4	New facility provision	Where appropriate new facilities will need to be developed. The provider of new facilities could be Kettering Borough Council but it could also include private providers, local sports clubs or schools. Mixed use facilities to cater for the needs of more than one sport should always be considered.

Statements	
a	<p>Kettering Borough Council will consider supporting capital and revenue projects that are delivered by sport clubs or organisations in line with the policy framework agreed at the Council's Executive Committee in September 2009. This policy framework can be found in appendix 16.</p>
b	<p>There are clearly pros and cons to dual use of schools but it should always be considered prior to the development of a brand new facility in the Borough, this is especially relevant in the A6 towns where the catchment is likely to only support one facility.</p>
c	<p>In the future, management of any sports facilities should be considered very carefully, possibly with the use of the "fit for the future" web tool developed by the Audit Commission and Sport England based on the findings of the "Public Sports and Recreation Services" paper. It identifies three key stages to the planning and commissioning of public leisure and recreation services. These stages are:</p> <ol style="list-style-type: none"> <li>1. Plan strategically (undertake a needs assessment, establish a clear vision and priorities, ensure fit between service provision and corporate priorities, clarify councils' and other stakeholders' roles and test affordability)</li> <li>2. Appraise the options (assess the council's capacity and skills, consider cross-boundary procurement, identify service delivery and investment requirements, develop a brief, consult on the brief with a range of potential operators and develop initial independent assessment options using appropriate criteria)</li> <li>3. Test the Market (establish a project team, produce a project plan and specification, consult with stakeholders, formally market test the partnership specification, independently evaluate bids, shortlist and negotiate with 2/3 potential partners, select a preferred partner and fine tune the agreement)</li> </ol> <p>The full tool and can be accessed on the Audit Commission website: <a href="http://www.audit-commission.gov.uk/leisure">http://www.audit-commission.gov.uk/leisure</a></p>

## Appendix 16: Summary of identified needs

With the use of the various tools explained in this document the following needs have been identified:

Type of facility	Priorities for investment	Summary of key points	Source of evidence
Athletics tracks	Improved floodlighting and CCTV	<p>There is one permanent 8 lane athletics track in Kettering. There is insufficient justification for development of comparable facilities elsewhere in the borough. The existing track requires improved floodlighting and security.</p> <p>The governing body national facility strategy highlights the county priorities of investment into small scale indoor and outdoor facilities. There are no specific priorities identified for the borough.</p>	<p>Club consultation</p> <p>Site assessment</p> <p>NGB response to consultation</p>
Boxing	Investment into the development of the boxing centre on Northampton Road	There is a single ring, changing accommodation, meeting room and training area at the Northampton Road pavilion. This is home to a successful club and should be retained with the possibility of developing it into a martial arts centre to serve the existing Tae Kwon Do club and Judo club.	Consultation with the respective clubs
Judo	Investment into the development of a Judo facility in Kettering.	The Kettering Premier Judo Club currently competes and trains from the William Knibb centre. They are increasing in popularity meaning they have reached the stage of requiring a base where their equipment can be left permanently in place. A bespoke centre with the boxing club could be	Consultation with the respective clubs

Type of facility	Priorities for investment	Summary of key points	Source of evidence
		investigated.	
Gymnastics	Secure a permanent home for Kettering Gymnastics Club that is suitable for regional gymnastics and trampoline competition.	Kettering Gymnastics Club lease a facility in Kettering. The club is very successful at increasing participation and work should be done to help the club secure a facility for the long term which is suitable for regional competition and training. The governing body has identified a need for improved facilities in Kettering that would serve the local requirements as well as satisfy the need for a new county facility. They have also identified a need for a permanent trampoline facility in the borough with borough wide catchment. These are both supported by the club.	Consultation with the club NGB response to consultation Site assessment
Indoor bowling facilities	None	There are 2 indoor bowls facilities in the borough, these are in Kettering and Desborough.	Site assessments Consultation with the clubs
Leisure/Fitness Centres	<p>A new leisure centre for Desborough</p> <p>A regional squash centre at the new Desborough Leisure Centre</p> <p>A two court sports hall for Burton Latimer</p>	<p>There are 10 leisure/fitness centres across the borough.</p> <p>1 of the leisure/fitness centres is at a secondary school.</p> <p>7 of the leisure/fitness centres are privately owned and managed.</p> <p>2 of the leisure/fitness centres are owned by the Borough Council.</p> <p>Desborough Leisure Centre has reached the end of its life and requires replacement, which should include a four court sports hall, 25 station fitness</p>	<p>Consultation with the club NGB response to the consultation</p> <p>Community consultation Site assessment</p>

Type of facility	Priorities for investment	Summary of key points	Source of evidence
		<p>room, squash courts and appropriate changing accommodation.</p> <p>Some investment is required into some of the private facilities to encourage access by minority groups. The Council could enter into communication with the private operators to negotiate suitable agreements for leisure pass holders.</p> <p>The community questionnaire demonstrated that people are willing to pay for additional facilities at leisure centres, with a café and fitness classes coming out as the most popular options.</p> <p>The community questionnaire demonstrated that the most important facilities for people are indoor pools, fitness centres and sport/leisure centres.</p> <p>The community questionnaire demonstrated that under 16s would rather use a large leisure centre, over 16s don't mind. More under 16s than over 16s would rather use a facility at a school site.</p> <p>Burton Latimer has a deficit of indoor sports facilities. The Burton Latimer Town Council questionnaire highlights the need for increased facilities.</p>	<p>Community consultation Site assessments</p> <p>Community consultation</p> <p>Community consultation</p> <p>Community consultation</p> <p>Community consultation</p>
Multi use (or small) halls and community	Enable existing and new village halls and community centres to have facilities that	There are seven community centres in the borough There are 22 village and church halls in the borough	Community consultation

Type of facility	Priorities for investment	Summary of key points	Source of evidence
centres	<p>are suitable for sport</p> <p>Current priorities are the Centre at Mawsley, Barton Seagrave Community Centre, Wibarston Village Hall, Geddington Village Hall and Broughton Village Hall</p> <p>Enable greater community access to the SPACE</p> <p>Develop facilities at Burton Latimer Country Club</p>	<p>The SPACE at the Grange Primary School has some community access.</p> <p>The William Knibb Centre and the Sir John Lowther Centre have halls which are suitable for sport.</p> <p>There is some infant football in the Burton Latimer Country Club.</p> <p>The Corn Market Hall is suitable for gentle indoor sport.</p> <p>There are 39 primary and infant schools which might be suitable for some community activity.</p> <p>There is a large MUGA at the Crescents Community Centre.</p> <p>The community questionnaire demonstrated that the majority of people would like to see their village hall or local community centre used more for sport and recreation.</p> <p>Burton Latimer has a deficit of indoor sports facilities. The Burton Latimer Town Council questionnaire highlights the need for increased facilities.</p>	<p>Site assessments</p> <p>Site assessment</p> <p>Site assessment Community consultation</p> <p>Community consultation</p> <p>Community consultation</p>
Recreation ground pavilions and changing accommodation	<p>Pytchley, Burton Latimer, Geddington and Rushton Cricket Clubs.</p> <p>Weekley Glebe pavilion</p>	<p>There are nine cricket pavilions split between the towns and villages in the borough, which are in a variety of conditions. They would all benefit from some funding to improve access but the site condition surveys demonstrated that the highest needs for investment are the pavilions in Pytchley, Burton Latimer, Geddington and Rushton. There is insufficient justification for development of new</p>	<p>Site assessments NGB response to consultation</p> <p>Site assessment</p> <p>Site assessment</p>



Type of facility	Priorities for investment	Summary of key points	Source of evidence
	<p>North Park pavilion</p> <p>Junior football in Burton Latimer</p> <p>Junior football in Desborough</p> <p>Desborough Football Club</p>	<p>cricket facilities elsewhere in the borough.</p> <p>Kettering Borough Council owns and manages five sports pavilions all serving community sports facilities. The greatest need for development is at Weekley Glebe playing fields, which is of poor quality and in need of refurbishment to bring it to current Football Association standards without reducing the amount of changing accommodation. The Northamptonshire Football Association has also identified this as a need. The facility at North Park playing fields could be developed further as a junior football academy. CCTV would be beneficial across all sites.</p> <p>There is a MUGA and changing facilities at Ise Valley pavilion</p> <p>There is a small MUGA and changing facilities at North Park pavilion.</p> <p>There are three bowls pavilions in the borough in addition to the Kettering Borough Council owned and managed sites.</p> <p>A football pavilion is expected at the Prologis Business Park in Kettering, this should be encouraged to progress with a suitable agreement for community access.</p> <p>The facility at Burton Park County Club could be developed into a hub for the promotion of junior football. This would require investment into the changing facilities. The future of Burton Wanderers</p>	<p>Site assessment</p> <p>Site assessment</p> <p>Site assessment</p> <p>Site assessment</p>

Type of facility	Priorities for investment	Summary of key points	Source of evidence
		<p>Football Club must not be jeopardised by any development.</p> <p>Desborough Youth Football Club has expressed a desire to relocate to the proposed leisure centre at the Grange. This is supported by the Northamptonshire Football Association. Changing accommodation for football should be investigated on the site.</p> <p>Desborough Town Football Club is talking to the Northamptonshire Football Association regarding the development of their changing facilities. Developments of the site should be encouraged alongside a suitable agreement for community access.</p> <p>Rothwell Town Football Club should also be encouraged to seek external funding to increase participation alongside a suitable agreement for community access.</p>	
Rugby	Secure a facility for Kettering Rugby Club that meets the RFU model venue 3	<p>Kettering Rugby Club has a long lease on the Kettering Borough Council owned facility in Kettering. The club requires a type 3 facility in Kettering in order to continue to develop and encourage greater participation. The governing body has recognised that Kettering Rugby Club needs a facility that meets the RFU model venue 3.</p> <p>During the life of this strategy the club requires investment into its changing accommodation and</p>	<p>Site assessment NGB response to consultation Club response to consultation</p> <p>Site assessment</p>

Type of facility	Priorities for investment	Summary of key points	Source of evidence
		improved disability access.	NGB response to consultation Club response to consultation
Sports halls	None	<p>There are 9 sports halls in the borough of 4 courts of more. 1 of these is a 12 court sports hall at the Kettering Conference Centre. The sports hall at Desborough Leisure Centre has four courts marked but is less than the recommended size for a four court sports hall.</p> <p>3 of the sports halls in the borough are based at larger leisure centres. 7 of the sports halls in the borough are based at a secondary school or college.</p> <p>There is a small sports hall at the Grange Primary School, which has some community access.</p> <p>Kettering Conference Centre should be encouraged to maximise their position as one of the few providers of a 12 court sports hall in England.</p> <p>Burton Latimer has a deficit of indoor sports facilities. The Burton Latimer Town Council questionnaire highlights the need for increased facilities.</p>	<p>Sports facilities planning model</p> <p>Community consultation</p>
Squash courts	Investment into the continued maintenance and development of the existing squash courts in the borough.	There are seven squash courts in the borough. Two of these are at the Kettering Rugby Club, Two are at the Desborough Leisure Centre and three are at the Kettering Conference Centre.	Response to NGB consultation Club consultation

Type of facility	Priorities for investment	Summary of key points	Source of evidence
	<p>A regional squash centre at the new Desborough Leisure Centre.</p>	<p>There is insufficient justification for the development of additional squash courts, but the squash courts that are provided should be retained.</p> <p>There is potential to develop a regional squash centre at the new leisure centre in Desborough, which should be explored alongside the plans. The sport's governing body has identified a need for a facility in the borough with county and regional catchment. This is supported by Desborough Squash Club.</p>	<p>Response to NGB consultation Club consultation</p>
<p>Swimming pools</p>	<p>Increase water space in Kettering through the extension of the Kettering Swimming Pool.</p>	<p>There are 5 swimming pools in the borough, all of which are based at larger leisure centres. 3 of them are accessible by members only, 1 is based at a secondary school with community use and 1 is owned and managed by Kettering Borough Council.</p> <p>The sports facilities planning model demonstrates that the borough has considerably less water space per 1000 than the regional and national average and the overall supply of pool area is insufficient in the borough.</p> <p>The community questionnaire demonstrated that the most important facilities for people are indoor pools, fitness centres and sport/leisure centres.</p>	<p>Sports Facilities Planning Model Responses to community consultation</p>
<p>Synthetic turf</p>	<p>An additional full size 3<sup>rd</sup></p>	<p>There is a full sized sand based synthetic turf pitch</p>	<p>NGB response to consultation</p>

Type of facility	Priorities for investment	Summary of key points	Source of evidence
pitches	generation astro turf pitch in Kettering	<p>at Lake Avenue and a full sized 3<sup>rd</sup> generation pitch at Montsaye Community Sports Centre. These are both well used.</p> <p>The Football Association has identified a need for an additional 3<sup>rd</sup> generation pitch in Kettering and is working with Tresham College to provide it on site. If this project fails then there will be a need to address this lack of provision.</p>	

DRAFT

## Appendix 17: The respondents of the community questionnaire

Age:

Age range	10-14	15	16-17	18-19	20-24	25-29	30-44	45-59	60-64	65-74	75-84	85-89	90+	No response
Percentage of 10+ respondents within age range	44.0%	11.0%	3.0%	1.0%	1.0%	2.0%	6.0%	6.0%	0.0%	7.0%	1.0%	0.0%	1.0%	17%

It can be clearly seen that the percentage of responses from people aged under the age of 16 is far higher than the population figures. For this reason we have split the under 16 results from the results from people aged 16 and above in the summary of responses. This removes the high weighting given to people aged under 16 and brings the age profile of the respondents aged 16 and above much closer to the profile of the borough.

Gender:

Gender	Male	Female	No response
Percentage of the respondents within gender	32%	53%	15%

We are satisfied that the gender spread of respondents is close enough to the gender spread of the borough to be representative. We are particularly pleased at the high response rate from females as Sport England's Active People Survey demonstrated that their participation in sport in the borough is low.

Ethnicity:

Ethnicity	White	Mixed	Asian	Black	Chinese	Other	No response
Percentage of the respondents within ethnicity	75%	3%	2%	1%	0.5%	0.4%	19%

Despite the high figure of non respondents we have still received responses from a slightly higher representation of people from black and minority ethnic backgrounds than the figure for

the borough. We are pleased at the high response rate from people from these backgrounds as Sport England's Active People Survey demonstrated that their participation in sport in the borough is low.

Disability:

Disability	Yes	No	No response
Percentage of the respondents declaring a disability	8%	74%	18%

The 2001 census showed that 16.2% of the borough residents had a disability so the respondent figure here is lower than we would have liked, but still gives us an indication of their feelings. Kettering Borough Council will work with local disabled groups in order to get a better understanding of their needs in advance of the 2013 refresh.

DRAFT

## Appendix 18: The value of sport

There is evidence to demonstrate that sport can contribute to the agendas of many agencies and organisations. Some of this evidence is referenced below and is sourced from Sport England's website:

[http://www.sportengland.org/index/get\\_resources/research/the\\_value\\_of\\_sport.htm](http://www.sportengland.org/index/get_resources/research/the_value_of_sport.htm)

Kettering Borough Council provides and supports sports facilities in order to achieve many of the outcomes specified below. But we also believe that working with National Governing Bodies of Sport, the Northamptonshire Sports Partnership (NSport) and Kettering Community Sports Network to link sports development initiatives designed to increase participation in sport to the sports facilities in the borough is key to making sure that we get the most out of our sports facilities. This is especially important in areas where participation is low, or where club development work could achieve significant outcomes.

### 1. Crime reduction and public safety:

In terms of diversionary programmes, the Cap Gemini Ernst and Young evaluation of the Splash programme found small, but significant, reductions in recorded crime for some of the programmes (although many of the schemes also included a range of developmental components). The study of 24 Positive Futures programmes by Leisure Futures illustrates a general reduction in both perceived and recorded local crime and 'nuisance behaviour' during the period of the programmes. However, the authors caution that the impacts varied between individuals and, as with other programmes, Positive Futures appeared to work best in partnership with other projects (especially youth services). Farrell et al report on a survey of participants in the Milwaukee Midnight Basketball League (which includes educational components) and conclude that the majority had experienced positive changes to both attitude and behaviour.

### 2. Economic impact and regeneration of local communities

In the East Midlands region:

- There was a 50% increase in consumer spending (current prices) on participation subscriptions and fees over the period 2000-2005.
- Sport related activity generated £1,258m and £1,321m in 2004 and 2005 respectively. This is equivalent to 1.9% of total value added in the region (2005).
- 40,700 people are employed in sport related employment corresponding to 1.9% of total employment in the region (2005).

A detailed report on the economic importance of sport in the East Midlands can be found on Sport England's website via the link below: [http://www.sportengland.org/2005\\_east\\_midlands.pdf](http://www.sportengland.org/2005_east_midlands.pdf)

A 2003 report entitled "The value of the sports economy in England" can be accessed via this link - [http://www.sportengland.org/sporteng\\_eng\\_june03.pdf](http://www.sportengland.org/sporteng_eng_june03.pdf)

Both reports demonstrate the important contribution sport makes to England's economy.

### 3. Education and lifelong learning

Current research into the nature of the relationship between participation in physical activity/sport and educational performance has produced mixed, inconsistent and often non-



comparable results (Etnier et al; Sallis et al; Shephard; Marsh and Kleitman). For example, some cross-sectional studies illustrate a positive correlation between participation in sport and physical activity and academic success (eg maths, reading, acuity, reaction times). However, critics point to a general failure to solve the issue of direction of cause – whether intelligence leads to success in sport, whether involvement in sport enhances academic performance, or whether a third factor (eg personality traits) explains both (Shephard; Etnier et al; Marsh and Kleitman). Longitudinal studies also generally support the suggestion that academic performance is enhanced, or at least maintained, by increased habitual physical activity. However, critics suggest that these studies are not definitive because some do not use randomised allocation of pupils to experimental and control groups (to control for pre-existing differences), others tend to use (subjective) teacher-assigned grades to assess academic achievement, rather than standardised and comparable tests and some programmes include parallel interventions making it difficult to isolate specific effects (Sallis et al; Shephard).

#### 4. Participation

The general conclusion is that childhood and adolescent participation in sport and physical activity makes adult participation much more likely than non-participation (Malina). However, because of a wide range of, often unexplored, intervening variables (eg post school education; social status of parents; gender; life course changes), it cannot guarantee it. Nevertheless, there is a general agreement that the potential for adult participation can be increased by ensuring choice, increasing opportunities for the development of self-efficacy, selecting activities for their potential for post-school participation and addressing issues of gender. In this regard Vihjalmsson and Kristjansdottir illustrate that girls' lower sports participation can be almost wholly accounted for by their lower levels of enrolment in sports clubs.

#### 5. Physical fitness and health

The US Department of Health and Human Services' seminal, comprehensive, review provides an analysis of evidence of the relationship between physical activity and various aspects of health. It illustrates the positive impacts of activity on a number of systems - cardiovascular, musculoskeletal, metabolic, endocrine and immune. The overall conclusion is that those who are regularly active, even on a moderate basis, have lower mortality rates than the least active. It also outlines the positive impacts of physical activity on various aspects of mental health. Allison's much shorter review outlines a wide range of physical and health benefits associated with even moderate physical activity and it discusses some of the possible mechanism involved. Cooper et al review evidence about the effect of physical activity on people with various disabilities. Although research indicates that physical activity can contribute to the amelioration of the effects of a range of disabilities, the authors note the need to expand research studies to include people from a range of disability etiologies. They also provide a series of recommendations for the use of physical activity to improve the health and quality of life of people with disabilities.

Farrell and Shields, via a secondary analysis of the English Health Education Monitoring Survey, provide some statistical support for the medical and epidemiological literature. They illustrate that those who claim to participate regularly in sporting activities report significantly higher levels of general health than non-participants, with the average daily duration of participation being positively and significantly related to self-reported health.

The review by the European Heart Network Expert Group on Physical Activity illustrates that a sedentary lifestyle more than doubles the risk of cardiovascular disease. It summarises the evidence that regular, moderate and accumulated activity can lower heart rate, raise insulin sensitivity, lower blood pressure, raise HDL/total blood cholesterol ratio and helps weight control. Rodriguez et al illustrate that physical activity reduced the risk of ischemic stroke among those with increased left ventricular mass.

Welk and Blair review research on the combined effect of physical fitness and body composition on obesity and health. They conclude that physical activity reduces and/or reverses the development of insulin-resistance, even among overweight or obese individuals

A series of studies address the effects of physical activity on the health of older people. Simonsick et al's self-assessed longitudinal data illustrate that more rigorous physical activity and a moderately active lifestyle confer some benefits to physically capable older adults, primarily in reducing the risk of functional decline and mortality. Dionne et al's review, addressing issues of exercise prescription, concludes that improving cardiovascular fitness has a greater impact on a range of health outcomes than simply increasing energy expenditure. Hunter et al's review concludes that the evidence of the benefits of resistance training in older adults is overwhelming, increasing power, reducing the difficulties of performing daily tasks, enhancing daily energy expenditure and body composition and promoting participation in spontaneous physical activity. Cottreau et al's survey and interview data conclude that lifetime leisure physical activity was strongly related to decreased risk of ovarian cancer.

## 6. Psychological health and wellbeing

Fox's review (1999) illustrates the growing evidence that exercise can be effective in improving mental well-being via improved mood and physical self-perception. Further, it is effective in the treatment of clinical depression and both state and trait anxiety. Taylor reviews research on the role of physical activity in reducing anxiety and stress, concluding that low-to-moderate physical activities can reduce anxiety; that a period of exercise training can reduce trait anxiety in clinical and non-clinical settings and a single exercise session can reduce state anxiety. In a 12-month longitudinal study DiLorenzo et al conclude that increases in aerobic fitness have both short and long-term beneficial effects on psychological outcomes.

Lee and Russell, in a longitudinal study of Australian women in their 70s, conclude that physical activity is associated with emotional well-being (cross-sectionally and longitudinally). Kotlyn's survey of women over 60 years of age found significant positive relationships between overall quality of life and energy expenditure and vigorous activities. Chodzko-Zajko's review of research on physical activity and aging concluded that regular physical activity is associated with increased psychological well-being, more positive mood states and reduced anxiety.

In a cross-sectional, self-report, study of 9-12 year old children Valois et al conclude that, especially for white females, participation in sports teams may enhance physiological and psychological well-being, contributing to life satisfaction. Tomson et al's cross-sectional, self-report study of 8-12 years olds found a strong positive association between depression and levels of physical activity and health-related fitness status - although the relationship between playing sports outside school and depressive symptoms was much more significant for boys than girls. Bunker's review of research on the contribution of sport and physical activity to the psycho-physiological development of girls and young women concludes that psychological and emotional benefits can be maximised by the provision of a wide range of activities, the avoidance of excessive exercise and emphasis on body physique and moderate and regular physical activity.

The material on the contribution of sport to the personal and social integration of people with disabilities is mostly small scale and qualitative. It illustrates that, irrespective of the sport, participation can increase perceived personal and social competence and social acceptance. Taub and Greer's interview data with 10-17 year olds with physical disabilities indicate that physical activity provides a normalising experience, facilitating perceptions of legitimisation of social identity and enhancing social networks. Kristen et al's two articles illustrate the perceptions of both parents and their 9-15 year old children. Parents viewed sports participation as providing valuable experiences of being part of a group, feeling of

togetherness and providing self-confidence. The participant interviews are used to identify 6 categories of experience, including experienced-based learning, developing self-confidence and social acceptance.

Grof and Kleibert's interviews with participants in adapted sports illustrate that they provide a heightened sense of competence and opportunities for identity formation. Blinde and Taub's interviews with male college students (with physical and sensory disabilities) indicate that sports participation resulted in perceived competence as a social actor; facilitation of goal setting and attainment; social integration. Page et al's study of six competitive disabled athletes illustrates that participation affirmed competence and provided a common social outlet.

## 7. Social capacity and social cohesion

Burnett addresses some of these issues in attempting to measure the social impact of a junior sports development programme in South Africa. She proposes a multi-dimensional impact assessment approach, drawing on a range of academic disciplines and operating at macro, meso and micro levels. Using a Sports Development Impact Tool, with small samples, she illustrates that the inclusive, non-competitive programme reduced social distance between teachers and pupils; enabled female teachers to break-down male-dominated barriers; enabled children to broaden their knowledge of each other.

More broadly, Driscoll and Wood explore the role of sport and recreation clubs in periods of social and economic change and their contribution to development of social capital in a rural Australian community. On the basis of a household survey and group discussions they conclude that sports clubs have the potential to perform wide-ranging socio-cultural functions, including leadership, participation, skill development, providing a community hub, health promotion, social networks, community identity.

Smith reviews literature relating to issues about peer relationships in physical activity settings and the contribution of peers to self-perception, moral attitudes and behaviours. Concentrating on friendships and group acceptance, Smith suggests that the physical domain is an ideal context for developing a deeper understanding of peer relationships.

At the level of group integration, the Scott Porter research examines the meaning of sport for minority ethnic groups with differing attitudes to social and cultural integration. They suggest that providers need to adopt a theory of change approach to the provision of sporting opportunities to diverse ethnic minority populations (this approach is also recommended by many of the contributors in the Participation section). At each stage it is necessary for providers to identify, and be sensitive to, the perceived and real barriers to participation, although it is suggested that there are few community-specific barriers.

## **Appendix 19: Taking Part: England's survey of culture, leisure and sport**

This demonstrated that 95 per cent of all children had participated in an active sport during the previous four weeks.

The most common type of active sport participated in was football (59%), followed by swimming or diving (39%) and basketball (30%).

Of those children that had participated in an active sport, 94 per cent had done so out of school lessons (this equates to 89 per cent of all children). The most common type of sport participated in outside school lessons was again football (47%), followed by swimming or diving (34%) and cycling or bike riding (21%). These data were consistent with the 2006 estimates.

Three-quarters (75%) of all children had participated in an active sport outside school lessons in the past week. Of those, 23 per cent had participated for at least an hour on one day, and 19 per cent had participated for at least an hour on two days. Around a quarter (27%) had participated for at least an hour on five or more days. The mean number of days was 314.

Converting these figures into a proportion of the total sample, 17 per cent had participated for at least an hour on one day, and 14 per cent had participated for at least an hour on two days. A fifth (20%) had participated for at least an hour on five or more days – this is a statistically significant increase from the previous year (up by 3 percentage points). The mean number of days on which children had participated for at least an hour in the past week was 215.

There were no other statistically significant differences in the estimates between 2006 and 2007.

## Appendix 20: The European sports charter

The European sports charter sets out the following:

*‘Sport means all forms of physical activity which, through casual or organised participation, aims at expressing or improving physical fitness and mental well-being, forming social relationships or obtaining results in competition at all levels’.*

1. to enable every individual to participate in sport and notably:

- to ensure that all young people should have the opportunity to receive physical education instruction and the opportunity to acquire basic sports skills,
- to ensure that everyone should have the opportunity to take part in sport and physical recreation in a safe and healthy environment, and, in co-operation with the appropriate sports organisations:
- to ensure that everyone with the interest and ability should have the opportunity to improve their standard of performance in sport and reach levels of personal achievement and/or publicly recognised levels of excellence.

2. to protect and develop the moral and ethical bases of sport, and the human dignity and safety of those involved in sport, by safeguarding sport, sportsmen and women from exploitation from political, commercial and financial gain, and from practices that are abusive or debasing, including the abuse of drugs and the sexual harassment and abuse, particularly of children, young people and women.”

# Sport in Kettering

We really need your views on all sports facilities in the Borough of Kettering.

Please take just 10 minutes to complete this short questionnaire.

We will collate the answers and hope to publish the results in December 2008.

Thank you



**Q1 Who are the following facilities important for? (You can tick more than one box)**

	<i>Important for me</i>	<i>Important for my children (parents only)</i>	<i>Important for others</i>	<i>Not important</i>
Sport / leisure centre	<input type="checkbox"/>	<input type="checkbox"/>	<input type="checkbox"/>	<input type="checkbox"/>
Indoor swimming pool	<input type="checkbox"/>	<input type="checkbox"/>	<input type="checkbox"/>	<input type="checkbox"/>
Tennis Court	<input type="checkbox"/>	<input type="checkbox"/>	<input type="checkbox"/>	<input type="checkbox"/>
Bowls Green	<input type="checkbox"/>	<input type="checkbox"/>	<input type="checkbox"/>	<input type="checkbox"/>
Football Pitch	<input type="checkbox"/>	<input type="checkbox"/>	<input type="checkbox"/>	<input type="checkbox"/>
Rugby Pitch	<input type="checkbox"/>	<input type="checkbox"/>	<input type="checkbox"/>	<input type="checkbox"/>
Squash Court	<input type="checkbox"/>	<input type="checkbox"/>	<input type="checkbox"/>	<input type="checkbox"/>
Health and fitness gym	<input type="checkbox"/>	<input type="checkbox"/>	<input type="checkbox"/>	<input type="checkbox"/>
Fenced kickabout & football area	<input type="checkbox"/>	<input type="checkbox"/>	<input type="checkbox"/>	<input type="checkbox"/>
Athletics Track	<input type="checkbox"/>	<input type="checkbox"/>	<input type="checkbox"/>	<input type="checkbox"/>
Small Astroturf	<input type="checkbox"/>	<input type="checkbox"/>	<input type="checkbox"/>	<input type="checkbox"/>
Large Astroturf	<input type="checkbox"/>	<input type="checkbox"/>	<input type="checkbox"/>	<input type="checkbox"/>
Cricket Pitch	<input type="checkbox"/>	<input type="checkbox"/>	<input type="checkbox"/>	<input type="checkbox"/>
Golf Course	<input type="checkbox"/>	<input type="checkbox"/>	<input type="checkbox"/>	<input type="checkbox"/>

**Q2 Is there anything missing from the list that you think is important? If so, what?**

---



---



---

**Q3 How often do you use the following in the Borough of Kettering?**

	<i>Daily</i>	<i>Once a week</i>	<i>Once a month</i>	<i>Less than once a month</i>	<i>Never</i>
Sport / leisure centre	<input type="checkbox"/>	<input type="checkbox"/>	<input type="checkbox"/>	<input type="checkbox"/>	<input type="checkbox"/>
Indoor swimming pool	<input type="checkbox"/>	<input type="checkbox"/>	<input type="checkbox"/>	<input type="checkbox"/>	<input type="checkbox"/>
Tennis Court	<input type="checkbox"/>	<input type="checkbox"/>	<input type="checkbox"/>	<input type="checkbox"/>	<input type="checkbox"/>
Bowls Green	<input type="checkbox"/>	<input type="checkbox"/>	<input type="checkbox"/>	<input type="checkbox"/>	<input type="checkbox"/>
Football Pitch	<input type="checkbox"/>	<input type="checkbox"/>	<input type="checkbox"/>	<input type="checkbox"/>	<input type="checkbox"/>
Rugby Pitch	<input type="checkbox"/>	<input type="checkbox"/>	<input type="checkbox"/>	<input type="checkbox"/>	<input type="checkbox"/>
Squash Court	<input type="checkbox"/>	<input type="checkbox"/>	<input type="checkbox"/>	<input type="checkbox"/>	<input type="checkbox"/>
Health and Fitness Gym	<input type="checkbox"/>	<input type="checkbox"/>	<input type="checkbox"/>	<input type="checkbox"/>	<input type="checkbox"/>
Fenced kickabout & basketball area	<input type="checkbox"/>	<input type="checkbox"/>	<input type="checkbox"/>	<input type="checkbox"/>	<input type="checkbox"/>
Athletics Track	<input type="checkbox"/>	<input type="checkbox"/>	<input type="checkbox"/>	<input type="checkbox"/>	<input type="checkbox"/>
Small Astroturf	<input type="checkbox"/>	<input type="checkbox"/>	<input type="checkbox"/>	<input type="checkbox"/>	<input type="checkbox"/>
Large Astroturf	<input type="checkbox"/>	<input type="checkbox"/>	<input type="checkbox"/>	<input type="checkbox"/>	<input type="checkbox"/>
Cricket Pitch	<input type="checkbox"/>	<input type="checkbox"/>	<input type="checkbox"/>	<input type="checkbox"/>	<input type="checkbox"/>
Golf Course	<input type="checkbox"/>	<input type="checkbox"/>	<input type="checkbox"/>	<input type="checkbox"/>	<input type="checkbox"/>
<i>Other (please specify)</i>					

---



---



---

**Q4 If you have used any of the following in the past 12 months, how do you usually get there?**

	<i>Walk</i>	<i>Cycle</i>	<i>Bus</i>	<i>Car</i>
Sport/Leisure Centre	<input type="checkbox"/>	<input type="checkbox"/>	<input type="checkbox"/>	<input type="checkbox"/>
Indoor Swimming Pool	<input type="checkbox"/>	<input type="checkbox"/>	<input type="checkbox"/>	<input type="checkbox"/>
Tennis Court	<input type="checkbox"/>	<input type="checkbox"/>	<input type="checkbox"/>	<input type="checkbox"/>
Bowls Green	<input type="checkbox"/>	<input type="checkbox"/>	<input type="checkbox"/>	<input type="checkbox"/>
Football Pitch	<input type="checkbox"/>	<input type="checkbox"/>	<input type="checkbox"/>	<input type="checkbox"/>
Rugby Pitch	<input type="checkbox"/>	<input type="checkbox"/>	<input type="checkbox"/>	<input type="checkbox"/>
Squash Court	<input type="checkbox"/>	<input type="checkbox"/>	<input type="checkbox"/>	<input type="checkbox"/>
Health and Fitness Gym	<input type="checkbox"/>	<input type="checkbox"/>	<input type="checkbox"/>	<input type="checkbox"/>
Fenced kickabout & basketball area	<input type="checkbox"/>	<input type="checkbox"/>	<input type="checkbox"/>	<input type="checkbox"/>
Athletics Track	<input type="checkbox"/>	<input type="checkbox"/>	<input type="checkbox"/>	<input type="checkbox"/>
Small Astroturf	<input type="checkbox"/>	<input type="checkbox"/>	<input type="checkbox"/>	<input type="checkbox"/>
Large Astroturf	<input type="checkbox"/>	<input type="checkbox"/>	<input type="checkbox"/>	<input type="checkbox"/>
Cricket Pitch	<input type="checkbox"/>	<input type="checkbox"/>	<input type="checkbox"/>	<input type="checkbox"/>
Golf Course	<input type="checkbox"/>	<input type="checkbox"/>	<input type="checkbox"/>	<input type="checkbox"/>
<i>Other (please specify)</i>				

---



---



---

**Q5** If you used any of the following in the past 12 months, how many minutes did it take you to get there?

	<b>Walk</b>			<b>Cycle</b>			<b>Bus</b>			<b>Car</b>		
	<i>0-10 mins</i>	<i>11-20 mins</i>	<i>Over 20 mins</i>	<i>0-10 mins</i>	<i>11-20 mins</i>	<i>Over 20 mins</i>	<i>0-10 mins</i>	<i>11-20 mins</i>	<i>Over 20 mins</i>	<i>0-10 mins</i>	<i>11-20 mins</i>	<i>Over 20 mins</i>
Sport / leisure centre	<input type="checkbox"/>	<input type="checkbox"/>	<input type="checkbox"/>	<input type="checkbox"/>	<input type="checkbox"/>	<input type="checkbox"/>	<input type="checkbox"/>	<input type="checkbox"/>	<input type="checkbox"/>	<input type="checkbox"/>	<input type="checkbox"/>	<input type="checkbox"/>
Indoor Swimming Pool	<input type="checkbox"/>	<input type="checkbox"/>	<input type="checkbox"/>	<input type="checkbox"/>	<input type="checkbox"/>	<input type="checkbox"/>	<input type="checkbox"/>	<input type="checkbox"/>	<input type="checkbox"/>	<input type="checkbox"/>	<input type="checkbox"/>	<input type="checkbox"/>
Tennis Court	<input type="checkbox"/>	<input type="checkbox"/>	<input type="checkbox"/>	<input type="checkbox"/>	<input type="checkbox"/>	<input type="checkbox"/>	<input type="checkbox"/>	<input type="checkbox"/>	<input type="checkbox"/>	<input type="checkbox"/>	<input type="checkbox"/>	<input type="checkbox"/>
Bowls Centre	<input type="checkbox"/>	<input type="checkbox"/>	<input type="checkbox"/>	<input type="checkbox"/>	<input type="checkbox"/>	<input type="checkbox"/>	<input type="checkbox"/>	<input type="checkbox"/>	<input type="checkbox"/>	<input type="checkbox"/>	<input type="checkbox"/>	<input type="checkbox"/>
Football Pitch	<input type="checkbox"/>	<input type="checkbox"/>	<input type="checkbox"/>	<input type="checkbox"/>	<input type="checkbox"/>	<input type="checkbox"/>	<input type="checkbox"/>	<input type="checkbox"/>	<input type="checkbox"/>	<input type="checkbox"/>	<input type="checkbox"/>	<input type="checkbox"/>
Rugby Pitch	<input type="checkbox"/>	<input type="checkbox"/>	<input type="checkbox"/>	<input type="checkbox"/>	<input type="checkbox"/>	<input type="checkbox"/>	<input type="checkbox"/>	<input type="checkbox"/>	<input type="checkbox"/>	<input type="checkbox"/>	<input type="checkbox"/>	<input type="checkbox"/>
Squash Courts	<input type="checkbox"/>	<input type="checkbox"/>	<input type="checkbox"/>	<input type="checkbox"/>	<input type="checkbox"/>	<input type="checkbox"/>	<input type="checkbox"/>	<input type="checkbox"/>	<input type="checkbox"/>	<input type="checkbox"/>	<input type="checkbox"/>	<input type="checkbox"/>
Health and Fitness Gym	<input type="checkbox"/>	<input type="checkbox"/>	<input type="checkbox"/>	<input type="checkbox"/>	<input type="checkbox"/>	<input type="checkbox"/>	<input type="checkbox"/>	<input type="checkbox"/>	<input type="checkbox"/>	<input type="checkbox"/>	<input type="checkbox"/>	<input type="checkbox"/>
Fenced kickabout & Basketball area	<input type="checkbox"/>	<input type="checkbox"/>	<input type="checkbox"/>	<input type="checkbox"/>	<input type="checkbox"/>	<input type="checkbox"/>	<input type="checkbox"/>	<input type="checkbox"/>	<input type="checkbox"/>	<input type="checkbox"/>	<input type="checkbox"/>	<input type="checkbox"/>
Athletics Track	<input type="checkbox"/>	<input type="checkbox"/>	<input type="checkbox"/>	<input type="checkbox"/>	<input type="checkbox"/>	<input type="checkbox"/>	<input type="checkbox"/>	<input type="checkbox"/>	<input type="checkbox"/>	<input type="checkbox"/>	<input type="checkbox"/>	<input type="checkbox"/>
Small Astroturf	<input type="checkbox"/>	<input type="checkbox"/>	<input type="checkbox"/>	<input type="checkbox"/>	<input type="checkbox"/>	<input type="checkbox"/>	<input type="checkbox"/>	<input type="checkbox"/>	<input type="checkbox"/>	<input type="checkbox"/>	<input type="checkbox"/>	<input type="checkbox"/>
Large Astroturf	<input type="checkbox"/>	<input type="checkbox"/>	<input type="checkbox"/>	<input type="checkbox"/>	<input type="checkbox"/>	<input type="checkbox"/>	<input type="checkbox"/>	<input type="checkbox"/>	<input type="checkbox"/>	<input type="checkbox"/>	<input type="checkbox"/>	<input type="checkbox"/>
Cricket Pitch	<input type="checkbox"/>	<input type="checkbox"/>	<input type="checkbox"/>	<input type="checkbox"/>	<input type="checkbox"/>	<input type="checkbox"/>	<input type="checkbox"/>	<input type="checkbox"/>	<input type="checkbox"/>	<input type="checkbox"/>	<input type="checkbox"/>	<input type="checkbox"/>
Golf Course	<input type="checkbox"/>	<input type="checkbox"/>	<input type="checkbox"/>	<input type="checkbox"/>	<input type="checkbox"/>	<input type="checkbox"/>	<input type="checkbox"/>	<input type="checkbox"/>	<input type="checkbox"/>	<input type="checkbox"/>	<input type="checkbox"/>	<input type="checkbox"/>

*Other - please specify*

---



---



---



**Q6 How far do you think you should be expected to travel to the following?**

	<b>Walk</b>			<b>Cycle</b>			<b>Bus</b>			<b>Car</b>		
	<i>0-10 mins</i>	<i>11-20 mins</i>	<i>Over 20 mins</i>	<i>0-10 mins</i>	<i>11-20 mins</i>	<i>Over 20 mins</i>	<i>0-10 mins</i>	<i>11-20 mins</i>	<i>Over 20 mins</i>	<i>0-10 mins</i>	<i>11-20 mins</i>	<i>Over 20 mins</i>
Sport / leisure centre	<input type="checkbox"/>	<input type="checkbox"/>	<input type="checkbox"/>	<input type="checkbox"/>	<input type="checkbox"/>	<input type="checkbox"/>	<input type="checkbox"/>	<input type="checkbox"/>	<input type="checkbox"/>	<input type="checkbox"/>	<input type="checkbox"/>	<input type="checkbox"/>
Indoor Swimming Pool	<input type="checkbox"/>	<input type="checkbox"/>	<input type="checkbox"/>	<input type="checkbox"/>	<input type="checkbox"/>	<input type="checkbox"/>	<input type="checkbox"/>	<input type="checkbox"/>	<input type="checkbox"/>	<input type="checkbox"/>	<input type="checkbox"/>	<input type="checkbox"/>
Tennis Court	<input type="checkbox"/>	<input type="checkbox"/>	<input type="checkbox"/>	<input type="checkbox"/>	<input type="checkbox"/>	<input type="checkbox"/>	<input type="checkbox"/>	<input type="checkbox"/>	<input type="checkbox"/>	<input type="checkbox"/>	<input type="checkbox"/>	<input type="checkbox"/>
Bowls Green	<input type="checkbox"/>	<input type="checkbox"/>	<input type="checkbox"/>	<input type="checkbox"/>	<input type="checkbox"/>	<input type="checkbox"/>	<input type="checkbox"/>	<input type="checkbox"/>	<input type="checkbox"/>	<input type="checkbox"/>	<input type="checkbox"/>	<input type="checkbox"/>
Football Pitch	<input type="checkbox"/>	<input type="checkbox"/>	<input type="checkbox"/>	<input type="checkbox"/>	<input type="checkbox"/>	<input type="checkbox"/>	<input type="checkbox"/>	<input type="checkbox"/>	<input type="checkbox"/>	<input type="checkbox"/>	<input type="checkbox"/>	<input type="checkbox"/>
Rugby Pitch	<input type="checkbox"/>	<input type="checkbox"/>	<input type="checkbox"/>	<input type="checkbox"/>	<input type="checkbox"/>	<input type="checkbox"/>	<input type="checkbox"/>	<input type="checkbox"/>	<input type="checkbox"/>	<input type="checkbox"/>	<input type="checkbox"/>	<input type="checkbox"/>
Squash Court	<input type="checkbox"/>	<input type="checkbox"/>	<input type="checkbox"/>	<input type="checkbox"/>	<input type="checkbox"/>	<input type="checkbox"/>	<input type="checkbox"/>	<input type="checkbox"/>	<input type="checkbox"/>	<input type="checkbox"/>	<input type="checkbox"/>	<input type="checkbox"/>
Health and Fitness Gym	<input type="checkbox"/>	<input type="checkbox"/>	<input type="checkbox"/>	<input type="checkbox"/>	<input type="checkbox"/>	<input type="checkbox"/>	<input type="checkbox"/>	<input type="checkbox"/>	<input type="checkbox"/>	<input type="checkbox"/>	<input type="checkbox"/>	<input type="checkbox"/>
Fenced kickabout & basketball area	<input type="checkbox"/>	<input type="checkbox"/>	<input type="checkbox"/>	<input type="checkbox"/>	<input type="checkbox"/>	<input type="checkbox"/>	<input type="checkbox"/>	<input type="checkbox"/>	<input type="checkbox"/>	<input type="checkbox"/>	<input type="checkbox"/>	<input type="checkbox"/>
Athletics Track	<input type="checkbox"/>	<input type="checkbox"/>	<input type="checkbox"/>	<input type="checkbox"/>	<input type="checkbox"/>	<input type="checkbox"/>	<input type="checkbox"/>	<input type="checkbox"/>	<input type="checkbox"/>	<input type="checkbox"/>	<input type="checkbox"/>	<input type="checkbox"/>
Small Astroturf	<input type="checkbox"/>	<input type="checkbox"/>	<input type="checkbox"/>	<input type="checkbox"/>	<input type="checkbox"/>	<input type="checkbox"/>	<input type="checkbox"/>	<input type="checkbox"/>	<input type="checkbox"/>	<input type="checkbox"/>	<input type="checkbox"/>	<input type="checkbox"/>
Large Astroturf	<input type="checkbox"/>	<input type="checkbox"/>	<input type="checkbox"/>	<input type="checkbox"/>	<input type="checkbox"/>	<input type="checkbox"/>	<input type="checkbox"/>	<input type="checkbox"/>	<input type="checkbox"/>	<input type="checkbox"/>	<input type="checkbox"/>	<input type="checkbox"/>
Cricket Pitch	<input type="checkbox"/>	<input type="checkbox"/>	<input type="checkbox"/>	<input type="checkbox"/>	<input type="checkbox"/>	<input type="checkbox"/>	<input type="checkbox"/>	<input type="checkbox"/>	<input type="checkbox"/>	<input type="checkbox"/>	<input type="checkbox"/>	<input type="checkbox"/>
Golf Course	<input type="checkbox"/>	<input type="checkbox"/>	<input type="checkbox"/>	<input type="checkbox"/>	<input type="checkbox"/>	<input type="checkbox"/>	<input type="checkbox"/>	<input type="checkbox"/>	<input type="checkbox"/>	<input type="checkbox"/>	<input type="checkbox"/>	<input type="checkbox"/>

Other - please specify

---



---

**Q7 Why do you take part in sport and leisure? (You can tick more than one box)**

- To improve health/keep fit.....
- To improve appearance .....
- To compete .....
- For fun.....
- For social reasons .....
- To relax.....
- All of the above.....

Other - please specify

---



---



---

**Q8 Are there any reasons why you don't take part in sport and leisure? (You can tick more than one box)**

- |   |  |
|---|--|
| <i>Everything is too far away</i> ..... <input type="checkbox"/>                  | <i>The facilities are poor</i> ..... <input type="checkbox"/>  |
| <i>I'm not good enough</i> ..... <input type="checkbox"/>                         | <i>It's too expensive</i> ..... <input type="checkbox"/>       |
| <i>I'm embarrassed</i> ..... <input type="checkbox"/>                             | <i>I don't have enough time</i> ..... <input type="checkbox"/> |
| <i>No childcare at the facilities</i> ..... <input type="checkbox"/>              | <i>I'm not fit enough</i> ..... <input type="checkbox"/>       |
| <i>The facilities aren't open when it suits me</i> ..... <input type="checkbox"/> |  |

*Other - please specify*

---

---

---

**Q9 Are there sport or recreational activities you do or would like to do, but can't because there are no appropriate facilities locally?**

- Yes .....   
No .....   
*If yes, what are they?*

---

---

---

**Q10 Which of the following would you be prepared to pay to use at a sports centre?**

- |  |  |
|--|--|
| <i>Coffee area / café</i> ..... <input type="checkbox"/> | <i>Crèche</i> ..... <input type="checkbox"/>       |
| <i>Therapy room</i> ..... <input type="checkbox"/>       | <i>Meeting room</i> ..... <input type="checkbox"/> |
| <i>Community room</i> ..... <input type="checkbox"/>     | <i>Allotments</i> ..... <input type="checkbox"/>   |
| <i>Fitness classes</i> ..... <input type="checkbox"/>    | <i>None</i> ..... <input type="checkbox"/>         |

*Other - please specify*

---

---

---

**Q11 If you have a local village hall or community centre, would you like to see it used more for sport and recreation?**

- Yes .....       *Not applicable* .....   
No .....

**Q12 Which of the following would you most like to use? (Tick one box only)**

- |  |  |
|--|--|
| <i>Large leisure centre</i> ..... <input type="checkbox"/>                 | <i>Small leisure centre</i> ..... <input type="checkbox"/>         |
| <i>Leisure facilities at a village hall</i> ..... <input type="checkbox"/> | <i>A leisure centre at a school</i> ..... <input type="checkbox"/> |
| <i>Leisure centre at work</i> ..... <input type="checkbox"/>               | <i>Any of them</i> ..... <input type="checkbox"/>                  |

**Q13 What are the strengths of the places that you use for sport and recreation? (if you use more than one facility then you can tick more than one option)**

	<i>Excellent</i>	<i>Good</i>	<i>Fair</i>	<i>Weak</i>	<i>Poor</i>
Cleanliness	<input type="checkbox"/>	<input type="checkbox"/>	<input type="checkbox"/>	<input type="checkbox"/>	<input type="checkbox"/>
Opening Hours	<input type="checkbox"/>	<input type="checkbox"/>	<input type="checkbox"/>	<input type="checkbox"/>	<input type="checkbox"/>
Parking	<input type="checkbox"/>	<input type="checkbox"/>	<input type="checkbox"/>	<input type="checkbox"/>	<input type="checkbox"/>
Range of activities	<input type="checkbox"/>	<input type="checkbox"/>	<input type="checkbox"/>	<input type="checkbox"/>	<input type="checkbox"/>
Staff	<input type="checkbox"/>	<input type="checkbox"/>	<input type="checkbox"/>	<input type="checkbox"/>	<input type="checkbox"/>
Ease of bookings	<input type="checkbox"/>	<input type="checkbox"/>	<input type="checkbox"/>	<input type="checkbox"/>	<input type="checkbox"/>
Overall Condition	<input type="checkbox"/>	<input type="checkbox"/>	<input type="checkbox"/>	<input type="checkbox"/>	<input type="checkbox"/>
It's nearby	<input type="checkbox"/>	<input type="checkbox"/>	<input type="checkbox"/>	<input type="checkbox"/>	<input type="checkbox"/>
Equipment	<input type="checkbox"/>	<input type="checkbox"/>	<input type="checkbox"/>	<input type="checkbox"/>	<input type="checkbox"/>
Changing Facilities	<input type="checkbox"/>	<input type="checkbox"/>	<input type="checkbox"/>	<input type="checkbox"/>	<input type="checkbox"/>
It's well maintained	<input type="checkbox"/>	<input type="checkbox"/>	<input type="checkbox"/>	<input type="checkbox"/>	<input type="checkbox"/>
The price	<input type="checkbox"/>	<input type="checkbox"/>	<input type="checkbox"/>	<input type="checkbox"/>	<input type="checkbox"/>

Other - please specify

---



---



---

**Finally, in order for us to get an even spread of views, can you tell us a little about yourself?**

**Q14 Are you.....**

Male? .....       Female? .....

**Q15 How old are you?**

10-14 .....       25-29 .....       75-84 .....   
 15 .....       30-44 .....       85-89 .....   
 16-17 .....       45-59 .....       90+ .....   
 18-19 .....       60-64 .....   
 20-24 .....       65-74 .....

**Q16 What is your ethnic group?**

White British..... <input type="checkbox"/>	Mixed White & Asian..... <input type="checkbox"/>
White Irish ..... <input type="checkbox"/>	Mixed - other mixed..... <input type="checkbox"/>
White other..... <input type="checkbox"/>	Asian or Asian British - Indian... <input type="checkbox"/>
Black or Black British - Caribbean..... <input type="checkbox"/>	Asian or Asian British - Pakistani..... <input type="checkbox"/>
Black or Black British - Black African..... <input type="checkbox"/>	Asian or Asian British - Bangladeshi..... <input type="checkbox"/>
Black or Black British - Other Black..... <input type="checkbox"/>	Asian or Asian British - Other Asian..... <input type="checkbox"/>
Mixed White & Black - Caribbean..... <input type="checkbox"/>	Chinese or other Ethnic Group - Chinese..... <input type="checkbox"/>
Mixed White & Black - African..... <input type="checkbox"/>	Chinese or other Ethnic Group - Other Ethnic Group..... <input type="checkbox"/>

**Q17**

**Do you consider yourself to have a disability?**

Yes .....       No.....

**Q18**

**What is your home postcode?**

\_\_\_\_\_

(for mapping purposes)

**Please return this questionnaire to any of the following locations  
before Monday 25th August 2008:**

**By post** to Kate Arberry, Kettering Borough Council, Municipal Offices,  
Bowling Green Road, Kettering, NN15 7QX

**In person** to any of Kettering Borough Council's Customer Service Centres in  
Burton Latimer, Desborough or Rothwell

or

Kettering's Tourist Information Centre

or

Kettering Borough Council's Offices on Bowling Green Road in Kettering

**The questionnaire is also available for completion online at  
[www.szygyleisure.co.uk/kettering.htm](http://www.szygyleisure.co.uk/kettering.htm)**

**If you need any more information on the project please email  
[michaelcowland@kettering.gov.uk](mailto:michaelcowland@kettering.gov.uk) or call 01536 534266.**

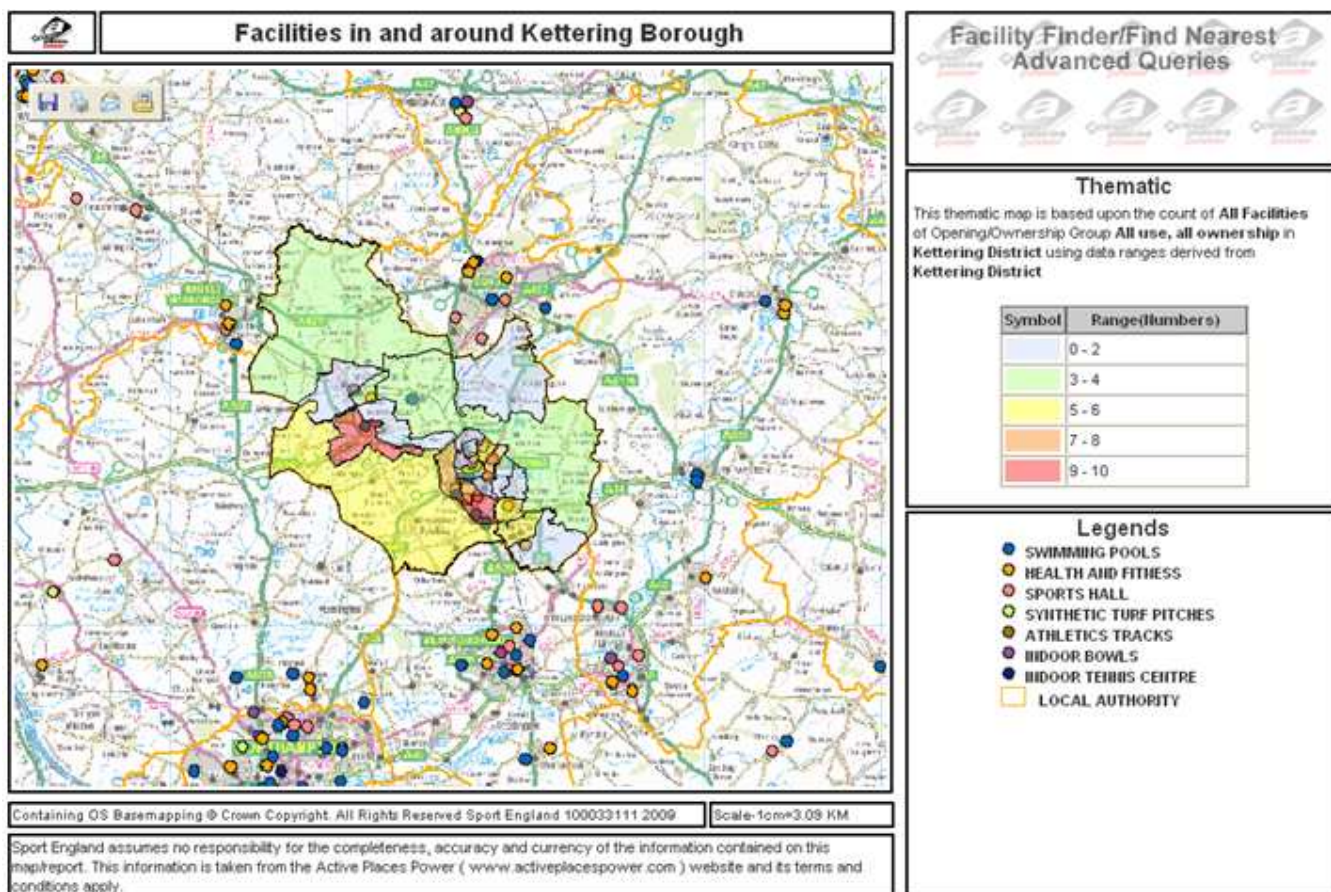
## **Appendix 22: Questions to National Governing Bodies of Sport**

1. Has your governing body identified a need for the refurbishment or relocation of an existing facility in Kettering?
2. Has your governing body identified a need for a new facility in or around Kettering with a borough wide catchment?
3. Has your governing body identified a need for a new facility in or around Kettering with a county wide catchment?
4. Has your governing body identified a need for a new facility in or around Kettering with a regional catchment?
5. Has your governing body identified a need for a new facility in or around Kettering with a National catchment?

## **Appendix 23: Questions to sports clubs**

1. What barriers to development has your club identified?
2. What evidence do you have to support this?
3. Can you propose any solutions to these barriers?

## Appendix 24: Facilities in and around Kettering Borough



## Appendix 25: Facility requirements of the Kettering East development

### Outdoor sports facilities:

5500 houses at 2.35 people per house means that the requirement based on the SPD calculator is 23.27ha or 232,700m<sup>2</sup>

The following sizes should be provided, these are pitch sizes only and do not include safety margins, ancillary facilities or safety margins:

- Senior football pitch (100m x 70m = 7000m<sup>2</sup> = 0.7ha)
- Youth football pitch (80m x 50m = 4000m<sup>2</sup> = 0.4ha)
- Mini soccer pitch (50m x 30m = 1500m<sup>2</sup> = 0.15ha)
- Cricket field (130m x 100m = 13000m<sup>2</sup> = 1.3ha)
- Rugby pitch (144m x 70m = 10080m<sup>2</sup> = 1.008ha)
- Tennis court (36.6m x 18.3m = 669.8m<sup>2</sup> = 0.067ha)
- Bowls green (40m x 40m = 1600m<sup>2</sup> = 0.16ha)

For the Kettering East development we would expect to see facilities broken down as below. We would also expect these facilities to be in addition to the facilities provided at the secondary school:

Timing (occupation)	Description of facility	Hectares (approx)
After 500 houses	One facility with two senior football pitches and a car park	2.1
After 1000 houses	One main facility with four senior football pitches, four youth pitches, four mini soccer pitches, two rugby pitches, a pavilion and a car park.	12
After 1000 houses	One main facility with four tennis courts, two bowls greens, a pavilion and a car park	1.1
After 1500 houses	One cricket facility with one pitch, a pavilion and a car park	2.2
After 2000 houses	One facility with two senior football pitches and a car park	2.1
After 2000 houses	One facility with one rugby pitch and a car park	1.6
After 2800 houses	One facility with two senior football pitches and a car park	2.1

Outdoor sports facilities should be built to the standards of the relevant National Governing Body as recognised by Sport England. These are the Football Association (Football), the Rugby Football Union (Rugby), the England & Wales Cricket Board (Cricket), the Lawn Tennis Association (Tennis) and English Bowling Association (Bowls).

#### Indoor sports facilities:

The sports facility calculator breaks down the required facilities for 5500 houses as follows:

Kettering	34UE	East Midlands	12,925	Automatic
Step 4				
Adjust Demand	0%	0%	0%	
Facility Requirements	Pools		Halls	
Size	132.39 sq.m. 2.49 Lanes 0.62 Pools		3.67 Courts 0.92 Halls	
Cost	£1,320,069		£2,376,971	
			Indoor Bowls	
			0.76 Rinks 0.13 Centre	
			£192,162	

We do not expect to see a swimming pool as part of the Kettering East development so would expect an investment of £1,320,069 into the Kettering Swimming Pool to increase overall



water space and cater for the increase in demand. In order to be prepared for the growing population we would expect this investment to come during the early stages of phase 1 of the development.

Our preferred location for the sports hall would be at the main community centre at the district centre. We would expect the main community centre to extend the size of their sports hall by an additional two courts in order to provide a four court sports hall. The development should be providing a four court sports hall but we would be happy that community access of a four court sports hall based at the school would satisfy 50% of the requirement and that an extension of the sports hall at the main community centre as detailed above would satisfy the balance.

Sports halls should always be built to current Sport England standards and should always include a reception area, lighting, storage, toilets and changing facilities.

We would expect the sports hall and main community centre to be built after 500 houses are occupied.

We would also expect there to be a multi use games area (MUGA) at the main community centre. This MUGA should be at least 18.5m x 37m. It should include fencing and floodlights and should be built to current Sport England standards.

### **Community Centres:**

Community Centres should be built to current Sport England standards but should at least have adequate parking, kitchen facilities, storage, office, a stage, an entrance foyer, toilets and changing rooms. All community centres should have a hall of suitable size for a two court sports hall (currently 18m x 17m x 7.6m).

Community Centres need to be suitable for activities such as badminton, short mat bowls, gymnastics, aerobics/keep fit, martial arts, judo, yoga, playgroups, table tennis, five a side football, short tennis, fencing, meetings, music, dance, drama, receptions, auctions, WI, scouts, discos etc.

Generous storage is essential for a full range of activities. Storage facilities need to be adequate for at least the storage of badminton nets and posts, crash mats, 4 x table tennis tables, short tennis nets and posts, 3 short mat bowls carpets and fenders, stage blocks, folding tables and over 150 chairs.

Sport England standards for community centres and sports halls can be found here:

[http://www.sportengland.org/facilities\\_planning/design\\_guidance\\_notes.aspx?sortBy=alpha&pageNum=3](http://www.sportengland.org/facilities_planning/design_guidance_notes.aspx?sortBy=alpha&pageNum=3)

### **Appendix 26: Method**

Kettering Borough Council identified the need to refresh its Sports Facilities Strategy in the 2008/2009 Community Services Service Unit Plan. The process was undertaken with support from Sport England's Facility Improvement Service. A steering group was established to agree the scope, aims and timetable of the project. This steering group included representatives from Kettering Borough Council, Northamptonshire Teaching Primary Care Trust, Northamptonshire

County Council, the Kettering Community Sports Network and the Northamptonshire Sports Partnership.

Training on Sport England planning tools was completed by key officers to ensure optimum benefit was attained from using these resources, which included the Active Places Power, Market Segmentation tool and Active People databases. Findings from the recent PPG17 study and other relevant documents were also analysed, the details of which can be found in the appendices.

Consultation was considered to be fundamental to the validity of the strategy and key stakeholders and partners were consulted. These included:

Consultee	Details	
	Pre December 2008 consultation prior to drafting	Consultation on the draft
Sport England	Email and face to face meetings	<i>To be completed following consultation</i>
National Governing Bodies of Sport (NGBs)	Twelve NGBs responded via an emailed questionnaire	<i>To be completed following consultation</i>
Local sports clubs	Twenty five sports clubs responded via an emailed questionnaire and small focus groups	<i>To be completed following consultation</i>
Individuals	One thousand one hundred and one people responded via a specific questionnaire	<i>To be completed following consultation</i>
Facility operators	Sixty four operators were consulted via face to face meetings	<i>To be completed following consultation</i>
The Northamptonshire Sports Partnership	Face to face meetings and representation on the steering group	<i>To be completed following consultation</i>
Northamptonshire County Council	Face to face meetings and representation on the steering group	<i>To be completed following consultation</i>

Northamptonshire Teaching Primary Care Trust	Face to face meetings and representation on the steering group	<i>To be completed following consultation</i>
--	--	---

The draft strategy has been placed on Kettering Borough Council's consultation portal for six weeks in November and December 2009. Kettering Borough Council's town centre offices were used for consultation for four days in the same period. Consultation documents have also been circulated to Sport England, National Governing Bodies of Sport, local sports clubs, individuals, facility operators and the Northamptonshire Sports Partnership.

A comprehensive audit of provision in the Borough was conducted with relevant facility managers during November and December 2008. It provides a snapshot of the situation at that time and was based on a proforma to standardise data collection and ensure sites were considered on a like for like basis on their ability to provide for any increase in participation.

Comments received during the consultation period will inform the next draft which will be submitted to Kettering Borough Council's Research and Development Committee and the Local Strategic Partnership board for further comments prior to the final draft being written.

The final draft will be submitted for adoption (as planning guidance) by Kettering Borough Council's Planning Policy Committee, Executive Committee and Council.

#### **Appendix 27: Links to other policies**

This Sports Facilities Strategy has been informed by a number of key strategic documents, many of which, particularly the Local Area Agreement and Sustainable Community Strategy relate directly to the wider benefits of sport that have been identified by Sport England. The table below shows the direct links between the benefits of sport, the Local Area Agreement and Kettering's Sustainable Community Strategy:

<b>Benefit of sport – Sport England</b>	<b>LAA theme</b>	<b>Sustainable Community Strategy</b>
Crime reduction and public safety	Building Safer Communities	Build safer communities
Economic impact and regeneration of local communities	A stronger local economy Improved environmental sustainability	Develop through having a growing economy
Education and lifelong learning	Improved life chances for Children	Give residents the opportunity to learn throughout their lives.
Participation	Improved life chances for Children Tackling exclusion and promoting equalities	Enable access to good quality leisure opportunities

Physical fitness and health	Improved adult health and well being	Improve the health of children and young families and older people
Psychological health and wellbeing	Improved adult health and well being	Healthy people who enjoy a good quality of life.
Social capacity and social cohesion	Stronger, empowered and cohesive communities	Residents have a shared identity and are involved in developing their communities

The documents below set out the strategic issues which key Partners in the County will address through their corporate policies and plans over the next few years. This Sports Facilities Strategy is informed by national and regional sports and planning policies. In turn, the Sports Facilities Strategy 2009- 2016 will inform and supports key Borough Council documents including its Corporate Priorities, Service Unit Plans, Area Action Plans and Local Development Documents.

<b>Policy</b>	<b>Summary and Implications</b>
National Planning Policy	PPG17 provides guidance to Local Authorities about planning and providing for sport and recreation facilities. It details the importance of undertaking a quantitative and qualitative audit and the development of local standards.
National Sports Policy - Game Plan - National Framework for Sport	<p>The vision for sport in England is <i>'to be the most active and successful sporting nation in the world'</i>. Key objectives are to:</p> <ul style="list-style-type: none"> <li>• Significantly increase and widen the base of participation in sport, particularly for health benefits</li> <li>• Be in the top five of nations competing in sport on the international stage and, in particular, to achieve consistent success in the sports which are most culturally significant for the nation.</li> </ul> <p>Game Plan also notes that facilities should be safe and secure environments.</p> <p>Sport facilities in the borough should support national objectives by ensuring its sports facilities are suitable for community sports development and, where appropriate, the development and nurturing of sporting talent.</p>
Sport England Strategy 2008 – 2011	The strategy is based on the delivery of three key outcomes of Grow, Sustain and Excel, which, when combined, will form the basis of a world-leading

<b>Policy</b>	<b>Summary and Implications</b>
	<p>community sport system. The strategy focuses on the three-year period 2008-09 to 2010-11. However, it also stretches out to 2012-13, because some targets are linked to the Olympics and because of the significant role of the National Governing Body 2009-13 funding round. The strategy also recognises that achieving a world-leading community sport system is a long-term vision that will be delivered over the next ten years.</p> <p>Grow – one million people taking part in more sport, more children and young people taking part in five hours of PE and sport a week.</p> <p>Sustain – More people satisfied with their sporting experience, 25% fewer 16-18 year olds dropping out of at least five sports.</p> <p>Excel – improved talent identification in at least five sports</p>
<p>Other relevant national policy</p> <ul style="list-style-type: none"> <li>- Every Child Matters</li> <li>- Youth Matters</li> <li>- Choosing Health</li> </ul>	<p>These documents identify the unique role of sport in developing and enhancing the lives and health of people, especially children and young people. Addressing inequalities through improved access to local sport facilities in and out of school hours is of particular relevance to the ability of the Borough to deliver the wider agenda of these documents.</p>
<p>Regional Spatial Strategy</p>	<p>The Regional Strategy sets out the long-term spatial vision for the sub-region to 2021. It also sets out guidance on the scale, location and timing of development, the associated infrastructure and the delivery mechanisms needed to achieve the Government's vision for sustainable communities. The Regional Strategy provides the framework for the policies contained within the Core Spatial Strategy for North Northamptonshire.</p> <p>Policy 32 states that Local Authorities should work with County based Sports Partnerships, the East Midlands Regional Sports Board, Sport England and other relevant bodies to ensure that there is adequate provision of sports and recreational facilities consistent with the priorities for urban and rural areas outlined in Policy (Concentrating Development in Urban Areas) and Policy 6 (Regional Priorities for Development in Rural Areas), and the relevant sub-area policies under section 3.5. It also states that where appropriate, local authorities should work across administrative borders to ensure that identified need is met in the most effective manner.</p>
<p>Regional Sports Policy</p>	<p>The East Midlands Regional Plan for Sport runs from 2004 to 2008. Although it has expired, the recognition of the importance of multi-activity sport hubs and the need to work with NGBs and schools to deliver fit for purpose facility requirements in order to increase participation in</p>

<b>Policy</b>	<b>Summary and Implications</b>
	<p>sport is unlikely to change in any revised document.</p> <p>The plan states that planning authorities should carry out thorough assessments of what facilities are needed.</p>
Regional Health Strategy	<p>The aims of this strategy are to improve health of residents by reducing health inequalities, address the social, economic and environmental determinants of health, support healthy lifestyles, protect health and improve access to, and provision of, local health and health related services. Physical inactivity and problems of obesity are key issues which impact on the provision of accessible and appropriate sports facilities for the people of Kettering Borough.</p>

Local policies:	
<p>Local Development Framework (LDF)</p> <p>This includes:</p> <ul style="list-style-type: none"> <li>- Core spatial strategy</li> <li>- Site specific proposals</li> <li>- Kettering Town Centre Area Action Plan</li> <li>- Rothwell &amp; Desborough Area Action Plan</li> </ul>	<p>The new style of Local Plan is called a Local Development Framework. The LDF is a portfolio of planning policy documents, which provides the basis for decisions to be made on planning applications. The Local Development Framework is designed to speed up the planning process, to ensure environmental issues are better integrated into planning decisions and to ensure the planning process is more accessible to the public.</p> <p>There are strong links between the Sports Facilities Strategy and the Local Development Framework</p>
Core Spatial Strategy	<p>Kettering is identified as a growth town with substantial plans to redevelop the town centre and its social infrastructure through enhancement of its offerings including cultural attractions. This in combination with new housing provision of approx. 2,360 between 2008 and 1012 is likely to secure developer contributions for sport and recreation facilities. Included is the rationale for sport as being essential to developing a healthy and sustainable community.</p> <p>The Plan states that development should be concentrated on the urban core of the borough. In the case of Kettering Borough, this would be the town of Kettering.</p>

<b>Policy</b>	<b>Summary and Implications</b>
Northamptonshire Neighbourhood Renewal Strategy	<p>The national strategy for neighbourhood renewal is designed to improve standards of health, education, housing and the environment, reduce crime and worklessness, and narrow the quality of life between the most disadvantaged neighbourhoods and the rest of the country.</p> <p>Based on evidence of deprivation and disadvantage in the county, the Northamptonshire Neighbourhood Renewal Strategy 2005 - 2008 has identified a Kettering Priority Intervention Area Cluster as a focus for action. By working together with key partners to provide specific intervention, key communities and neighbourhoods could be revitalised and a greater improvement of quality of life achieved.</p> <p>Although it has expired any future document is likely to keep its focus on areas within the Avondale Grange Ward, St Michaels and Wicksteed Ward, William Knibb Ward, Northfield Ward and All Saints Ward.</p>
Sustainable Community Strategy	<p>The role of the Sustainable Community Strategy is to set out the strategic vision for a place. It provides a vehicle for considering and deciding how to address difficult cross-cutting issues.</p> <p>Includes sport as a contributor to the health and wellbeing of children, young people and families recognising its role in reducing obesity.</p> <p>Acknowledges the need to increase the number of people accessing leisure facilities and holiday schemes and recognises the importance of Kettering's sports facilities strategy to effectively work with developers to obtain the best schools, sport, leisure and community facilities, community groups, libraries, transport and public art as well as improving the biodiversity of the borough and the borough's cultural economy.</p>
Local Area Agreement	Includes sport as a key feature within developing communities which implies an emphasis on enabling the development of social networks through sporting activities and services.
Local Council Strategies	Improving quality of life and optimising economic and social impact of the Council's resources are key drivers in these plans. Commitment to a greener environment and addressing community and rural issues is also featured. The sporting needs of rural communities should be reflected in the sports facilities strategy.

<b><i>Policy</i></b>	<b><i>Summary and Implications</i></b>
	<p>The aspirations to develop schools may have future significance for sport facilities. This requires on-going monitoring and revision, when required, of the sport facilities strategy.</p> <p>The LA Improvement Plan identifies the need to secure developer contributions to resources for sport.</p>

DRAFT



**Appendix 28: Criteria for support for sport**

**APPENDIX A to ITEM 9 (Executive 16.09.09)**

Criteria	Consideration
Financial stability and revenues	When determining the case for a taxpayer support, the following will be taken into account; <ul style="list-style-type: none"> <li>a. The organisation must be financially sound</li> <li>b. The level of the organisations reserves and/or balances</li> <li>c. An analysis of revenue and capital expenditure in recent years</li> </ul>
Community participation	The extent to which the wider community <u>participates</u> in the activity, as opposed to forms an audience/spectator base.
Delivers and adds value to corporate priorities	The process by which any organisation undergoes an assessment of the quality of their “offer”, tested against Kettering Borough Council corporate priorities, Local Strategic Partnership priorities, Local Area Agreement priorities, equality of access, and other relevant priority documents. Relevant corporate priorities include outcomes for health improvement, skill development and community safety.
Use of Assets	The extent to which any asset involved can be utilised over and above the primary use. For example, does the request for support make an existing asset more sustainable or available for other complimentary uses.
Top up or fully funded	A principle to favour top up funding where other significant (private or public) funds are available
National Governing Body support	The capital project must have been identified as a need by the relevant National Governing Body of Sport
Geographic Scope	The extent to which the organisation / facility will attract local, regional or national interest into the Borough
Partnership opportunities	The extent to which any subsidy might enable two or more organisations/clubs to work together, share resources, and maximise their offer to the wider community, or offer better value for money for taxpayers. The extent to which any subsidy might develop a partnership between Kettering Borough Council and the organisation applying. This might include involvement in healthy living initiatives, holiday schemes, coach education schemes, volunteer development, skill development and use of facilities
The reason for the situation.	The extent to which the organisation has mitigated any risks or recognised opportunities and demonstrated this in their business plan or development plan.
Community benefit and community access	The extent to which the community has access to any facilities provided The extent to which organisation carries out community outreach work The affordability for all areas of the community, including the most vulnerable. The links that could be made to the Kettering Leisure Pass.
Risk Assessment	Measures to ensure that the Council’s support is protected from unforeseen events. This might include:- <ul style="list-style-type: none"> <li>a) claw back and dissolution clauses</li> <li>b) profit share clauses</li> <li>c) legal rights over assets</li> </ul>
Reputation Management	The extent to which the contribution of Kettering Borough Council will be recognised
Governance / formal constitution	The main purpose of the club must be to provide activities for and promote participation in one or more sport, which must be recognised by Sport England

	<p>There should be policies to ensure equal opportunities and child protection if applicable If the facilities are controlled by a Ltd company, which is separate from the sports club then any application for funding should come from the underlying sports club</p>
--	---

DRAFT

## Appendix 29: Who did we consult?

Consultee	Details	
	Pre December 2008 consultation prior to drafting	Consultation on the draft
Sport England	Email and face to face meetings	Emailed response
National Governing Bodies of Sport (NGBs)	Twelve NGBs responded via an emailed questionnaire	Six NGBs responded via email
Local sports clubs	Twenty five sports clubs responded via an emailed questionnaire and small focus groups	Ten clubs responded via email
Individuals	One thousand one hundred and one people responded via a specific questionnaire	One hundred and four individuals responded via email
Facility operators	Sixty four operators were consulted via face to face meetings	Two facility operators responded via email
The Northamptonshire Sports Partnership	Face to face meetings and representation on the steering group	No response
Northamptonshire County Council	Face to face meetings and representation on the steering group	No response
Northamptonshire Teaching Primary Care Trust	Face to face meetings and representation on the steering group	Emailed response